



Mr. Stan Ramos  
Budget Office  
County of Hidalgo

Following is a summary of ADD Items and related costs for Change Order Number 08:

- 1.) RFP 036 / CR #88: ALUMINUM EXTERIOR/INTERIOR DOORS, FRAMES AND HARDWARE:  
**ADD \$13,426.00**
- 2.) RFP 037 / CR #95-A: Scrapping floor sealer off of floor @ West Vault/ New Conference Room #C-1/112:  
**ADD \$3,939.00**
- 3.) RFP 041 / CR #96: 2<sup>nd</sup> FLOOR DISTRICT ATTORNEY OFFICE REMODEL:  
**ADD \$45,988.00**
- 4.) RFP 043 / CR #97A RE-SPACING OF BENCH SEATING FROM FIVE TO SIX  
**ADD \$845.00**
- 5.) RFP 042 / CR #99: ADDITIONAL ELECTRICAL SERVICE  
**ADD \$12,742.00**

**ADD TOTAL: \$76,940.00**

Sincerely;  
Alcocer Garcia Associates, Inc.



Eduardo Alcocer  
President



# Alcocer Garcia Associates, Inc.

1333 E. Jasmine Ave McAllen, Texas 78501 Off. 956-618-2007 Fax. 956-618-2008

February 2, 2015

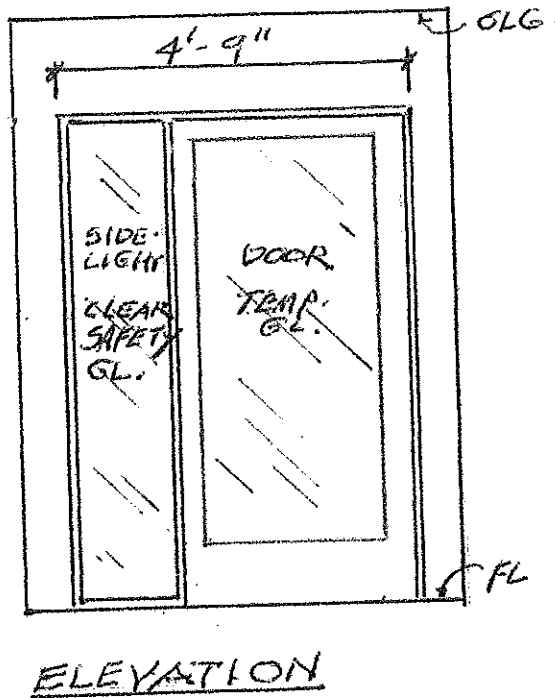
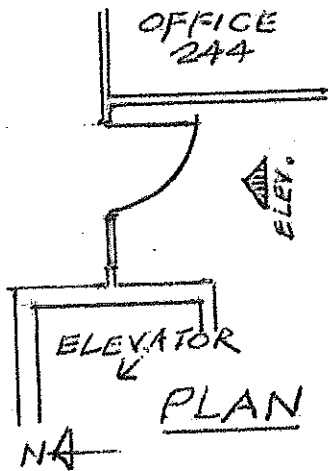
To: Manuel Ornelas, D. Wilson Construction Co.  
Project: Renovations to Former Administration Building, 1st & 2<sup>nd</sup> Floors.

## REQUEST FOR PROPOSAL O36 CHANGES AT DOORS MARKED 128

Changes required to accommodate space between existing walls:

1. Delete pair of aluminum doors marked 128 on original plans.
2. Provide and Install door/sidelights /hardware shown below.

*George Garcia*  
George A. Garcia,  
Project Architect



### NOTES:

- Aluminum door to be 3' x 7', medium stile with 10" bottom rail, bronze finish.
- Hardware, bronze finish:
  - Pivot hinges
  - ADA Aluminum pull
  - ADA Closer, surface mounted
  - Push bar exit device equipped for electric access control. Verify/coordinate with access control equipment supplier/installer. Verify strike requirement.

D. Wilson Construction Company

P.O. Box 3455  
McAllen, TX 78502-3455  
Ph : (956) 686-9573

DAYS: \_\_\_\_\_

**Change Request**

To: George A. Garcia  
Alcocer Garcia Associates, Inc  
1333 E. Jasmine Ave.  
McAllen, TX 78501  
Ph: (956)618-2007 Fax: (956)618-2008

Number: 88  
Date: 2/10/15  
Job: 12-561 Remodel Administration Bldg  
Phone:

Description: Exterior/Interior Aluminum Doors and electrified HDW. Verbal Request & RFP #036

Source: Other # RFP036/Verb

We are pleased to offer the following specifications and pricing to make the following changes:

Per AGA's / County's request delivered at our meeting held on Thursday, 2.5.15 (Reference RFI#92, 2.4.15 & RFI#86,1.9.15) as well as RFP #036, 2.2.15. Please see attached proposal for the Credit of the aluminum doors previously priced and cost proposal for replacement Doors and HDW compatible with the access control devices also per RFP #036. Be advised that delivery of the new doors may possibly take up to twelve (12) weeks. It is expected that the existing exterior doors will remain in place until such time that the new Doors & HDW arrive and are installed probably after City CO is issued for the building. Also be advised that the door marked E2 is not any longer scheduled for new door leaves nor HDW. Thank you.

Description	Labor	Material	Equipment	Subcontract	Other	Price
Glass and glazing, Alum Doors				\$13,426.00		\$13,426.00
					Subtotal:	\$13,426.00
					Total:	\$13,426.00

The schedule will be impacted.

If you have any questions, please contact me at .

Submitted by: Manuel M. Ornelas, D. Wilson C

Approved by: \_\_\_\_\_  
Date: \_\_\_\_\_

Cc: Ed Alcocer, AGADC, Stan Ramos (Hidalgo County), valde.guerra@co.hidalgo.tx.us, Horacio Quintero (D. Wilson Construction Co.), Mateo Salazar (D. Wilson Cons, apalacios@prodigycompany.com

Renovation to HC Admin Bldg

Verbal RFP

DATE: 2.10.15

2.5.15

Math Check

SUBTOTAL:

12,158

**06-000 CARPENTRY**

- 06-050 Rough Carpentry (Move Woods Stud Wall)
- 06-420 Granite Counter Tops

SUBTOTAL:

12,158

**07-000 MOISTURE PROTECTION**

- 07-115 Shower Stall Water Proofing
- 07-160 Dampproofing Above Grade
- 07-210 Building Insulation
- 07-270 Firesopping and Firesafing
- 07-402 PreFinished Metal Roofing/Pavilion/Shed
- 07-525 Mod. Bit. Mem. Roofing
- 07-620 Gutters/ Downspouts
- 07-831 Roof Hatches and Heat/Smoke Vents
- 07-900 Building Sealants

SUBTOTAL:

12,158

**08-000 DOORS & WINDOWS**

- 08-100 Hollow Metal Door Frames & Wood Doors
- 08-213 Plastic Laminate Faced Doors
- 08-710 Finish Hardware
- 08-100 Frame/Door/Hdwr Labor (Alum. Storefront)
- 08-305 Access Doors
- 08-332 Overhead Rolling Doors
- 08-750 Glass & glazing
- 08-950 Insulated Translucent Skylights

SUBTOTAL:

12,158

Renovation to HC Admin Bldg  
DATE: 2/10/15  
Completion

Verbal RFP  
2.5.15

Master Check

<b>12-000 Furnishings</b>	
12-300	Educational Casework (Millwork)
12-348	Laboratory Casework
12-504	Horizontal Blinds
SUBTOTAL	

<b>15-000 MEP</b>	
15-100	Plumbing Contractor
15-300	Fire Sprinkler System
15-300	FM 200
15-500	HVAC Contractor
16-100	Electric Contractor/ Fire Alarm
SUBTOTAL	

PROJECT SUBTOTAL	
12,158	

D. Wilson Construction Company fee	
7.00%	
851	
13,009	

91-871	1	Builder's Risk Policy (Hughston quote)	0.009%	1	1
91-874		Liability Insurance	0.620%	81	

INSURANCE SUBTOTAL	
82	
1	

PROJECT SUBTOTAL	
13,091	
335	
1	

math is correct

Renovation to HC Admin Bldg  
DATE: 2/10/15  
Completion


Verbal RFP  
2.5.15

Math Check

PROJECT TOTAL:

13,426

1 math is correct

2.7.15  
 RECEIVED H.C

G & S Glass, LLC  
 616 N. Closner Blvd.  
 Edinburg, TX 78541-3474

# Estimate

Date	Estimate #
2/9/2015	10485

Name / Address
D. WILSON 1209 E. Pecan P O BOX 3455 McAllen, TX 78501 Phone: 686.9573 Fax: 686.3270, Texas

Project
12-561 Remodel Administration Bldg

Description	Qty	Rate	Total
100% CREDIT FOR ELEVATIONS E1, E2, E4, E10, E12 AND 128 ALL CONSISTED OF PAIR OF DOORS ONLY NON EL HARDWARE (PUSH PULLS)	-1	14,490.00	-14,490.00
THREE PAIR OF DOORS WITH SUB FRAMES AND HARDWARE ELEVATION E1, E4, E12-- 6-0 X 7-0 MEDIUM STYLE DOORS WITH CURTAIN WALL SUB FRAMES HARDWARE CONSISTS OF A 1786 EL RIM EXIT DEVICE  ELEVATION E10-- 6-0 X 7-0 MEDIUM STYLE PAIR OF DOORS WITH TRIFAB 451 MATERIAL WITH TRANSOM HARDWARE CONSISTS OF A 1786 EL RIM EXIT DEVICE  ELEVATION 128-- 3-0 X 7-0 MEDIUM STYLE SINGLE DOOR WITH SIDELITE MATERIAL TO BE TRIFAB 450 WITH OUT TRANSOM HARDWARE 1786 EL DEVICE  NOTE: ANY ELEVATION NOT MENTIONED IS CONSIDERED AN EXCLUSION AND IS SUBJECT TO A CHANGE ORDER. AREA MUST BE READY TO RECEIVE MATERIALS AS G&S DOES NOT PERFORM CARPENTRY AND/OR MASONRY WORK.  EXCLUDES:	1	26,648.00	26,648.00

<b>Subtotal</b>
<b>Sales Tax (8.25%)</b>
<b>Total</b>

G & S Glass, LLC  
 616 N. Closner Blvd.  
 Edinburg, TX 78541-3474

# Estimate

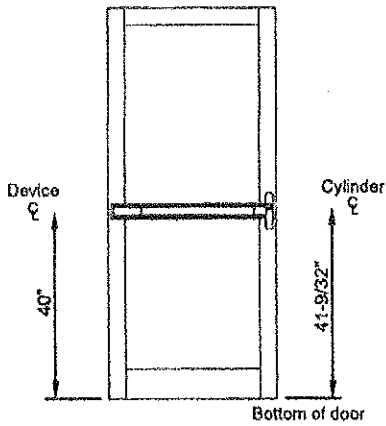
Date	Estimate #
2/9/2015	10485

Name / Address
D. WILSON 1209 E. Pecan P O BOX 3455 McAllen, TX 78501 Phone: 686.9573 Fax: 686.3270, Texas

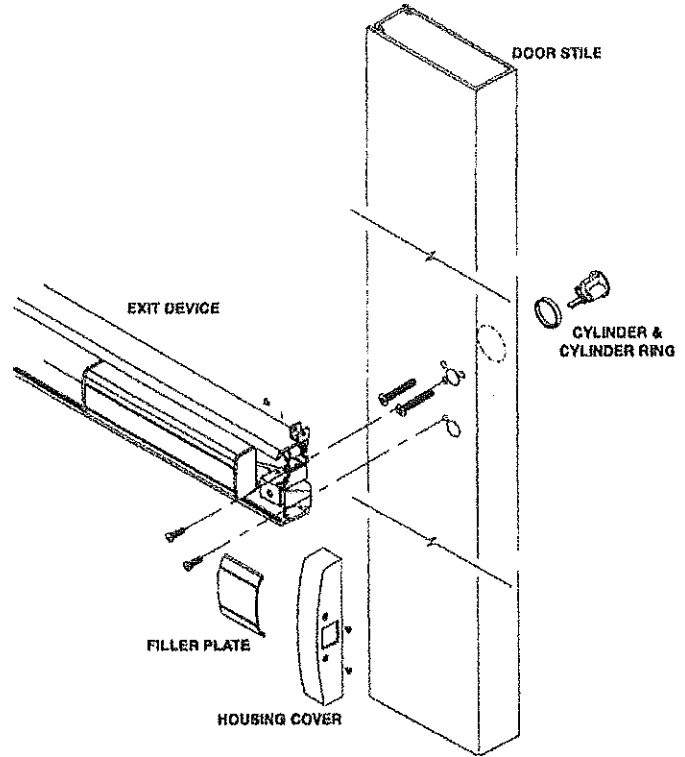
Project
12-561 Remodel Administration Bldg

Description	Qty	Rate	Total
PAIR OF DOORS FOR ELEVATION E2, CARD READERS BY OTHERS, BREAK METAL, FLASHING.  DEBBIE SUAREZ  JOB LOCATION: HIDALGO COUNTY RENOVATIONS EDINBURG TEXAS CONTACT: MANNY ORNELAS			
		<b>Subtotal</b>	
		<b>Sales Tax (8.25%)</b>	
		<b>Total</b>	



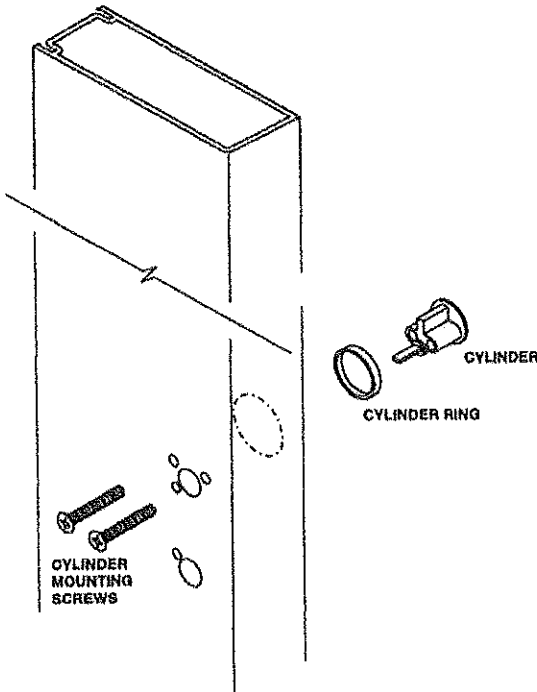


**RIM EXIT DEVICE LOCATION**



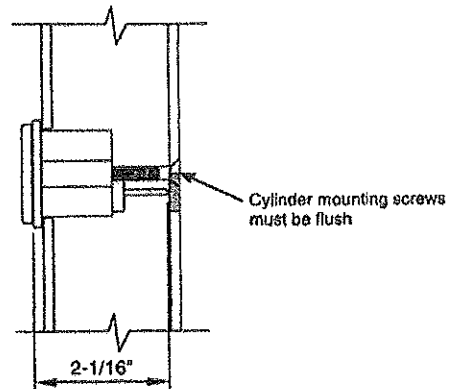
**CYLINDER INSTALLATION**

Cylinder must be installed before exit device. Insert cylinder with cylinder ring into the door stile and secure in place with cylinder mounting screws.



**INSTALLING CYLINDERS BY OTHERS**

Cut tailpiece to correct length and install. (Mounting screw heads must be flush with door surface.)



Laws and building and safety codes governing the design and use of glazed exit doors, windows and curtain wall products vary widely. Kawneer does not control the selection of product configurations, operating hardware or glazing materials, and assumes no responsibility therefor.

Kawneer reserves the right to change configuration without prior notice when deemed necessary for product improvement.  
© Kawneer Company, Inc., 2014

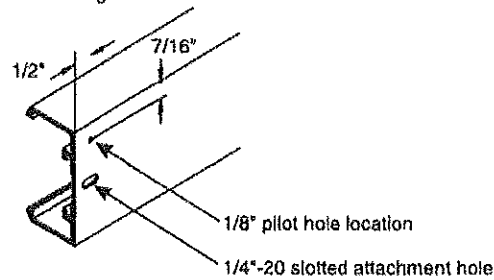
# KAWNEER 1786 EL RIM EXIT DEVICE

## INSTALLATION INSTRUCTIONS

APRIL, 2014  
EC 95424-053

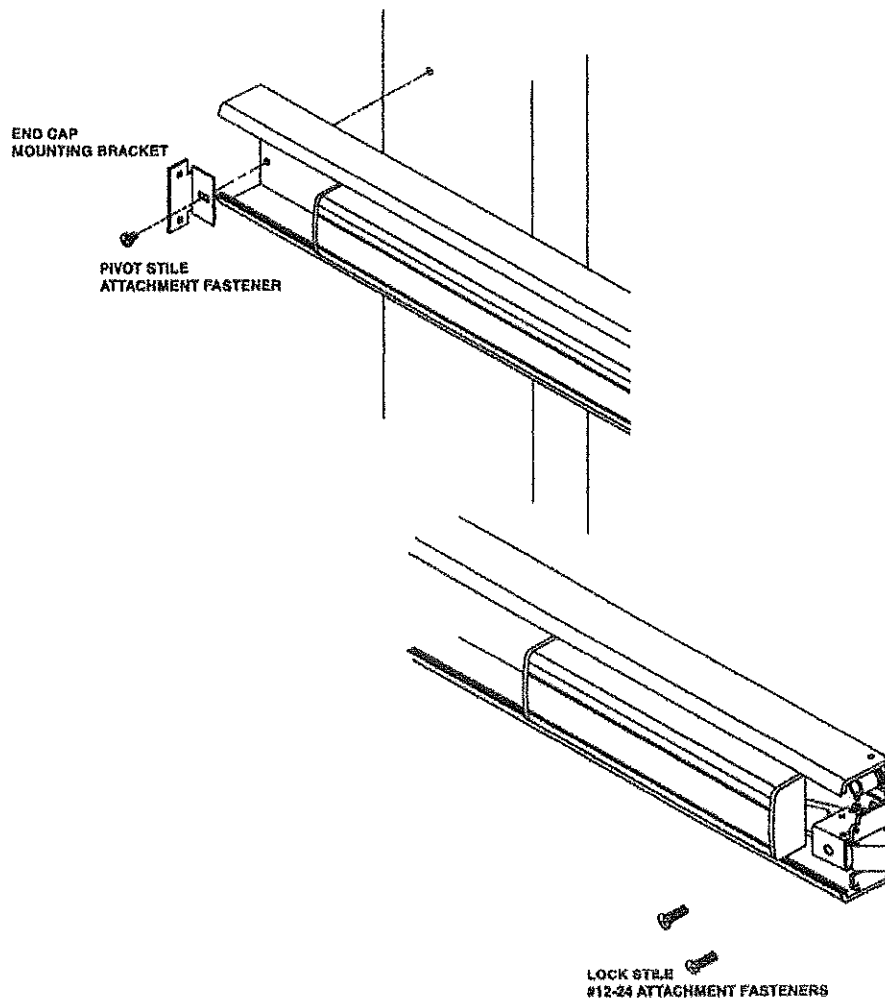
### ELECTRICAL WIRE ACCESS

- 1) To prep for quick connect wire access hole, flip exit device over exposing the back side upon a protective surface to prevent damaging finish.
- 2) Locate the 1/4"-20 slotted attachment hole, positioned on the pivot stile of exit device. As a reference point, the wire access hole position is located at corner of exit device housing toward the top of door.
- 3) Mark and prep a 1/8" pilot hole 7/16" from top of exit device directly above the 1/4"-20 slotted attachment hole. The 1/8" pilot hole will be centered approximately 1/2" from edge of exit device housing.

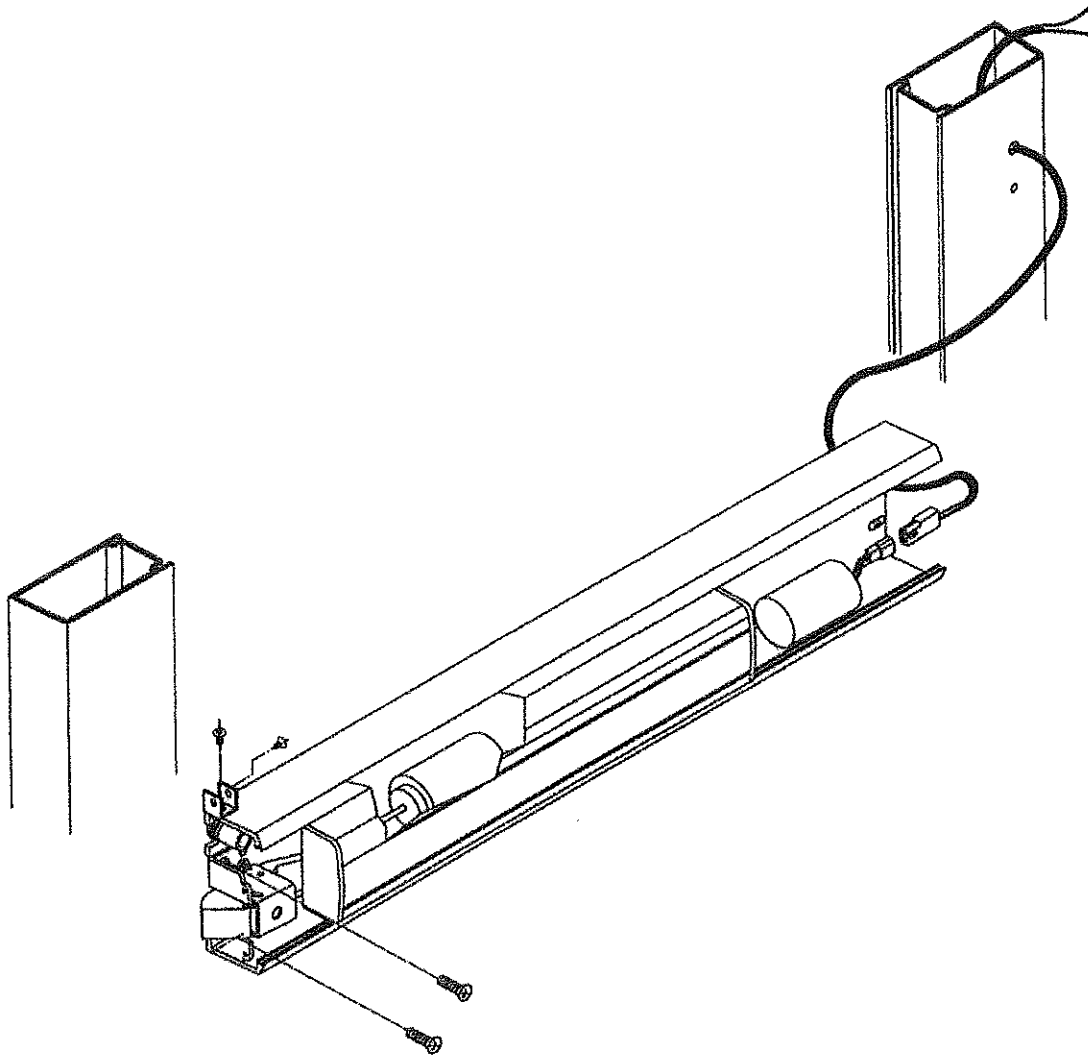


### RIM EXIT DEVICE ATTACHMENT

- 4) Attach exit device onto pivot and lock stile of door with fasteners and end cap bracket provided, as indicated below.



- 5) Using the 1/8" pilot hole as a guide to complete the wire access prep, (at a slight angle) drill a 5/16" hole directly thru the exit device housing and door stile for wire access.
- 6) Remove all burrs inside and outside to prevent wire from be damaged.
- 7) Attach the quick connect from the PWM power booster to the female 48" quick connect cable. (shipped loose)



- 8) Transfer the wiring from the door to frame using an approved power transfer device.
- 9) Complete the connections from the quick connect cable to power transfer.
- 10) Connect the power transfer to approved power supply.
- 11) Test unit for proper electrical activation.
- 12) Install cover brackets (on top and bottom of device) onto exit device with fasteners provided.

**Note:**

- a. All wiring to be coordinated with a licensed electrical installer.
- b. The PS1, PS5-4 or PS5-6 is the approved power supply for this exit device.
- c. Allows wire run from power supply to exit device of up to 700' with 18/2 wire.

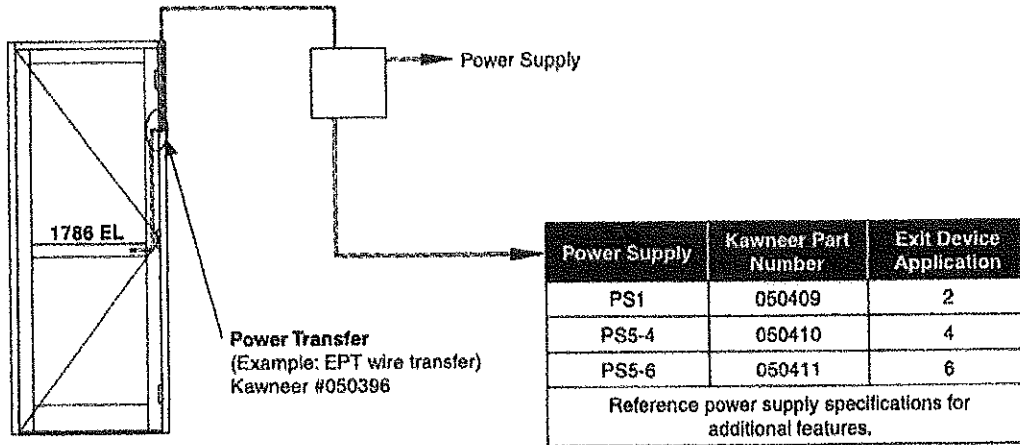
**ELECTRICAL SPECIFICATION**

Voltage: 24 VDC

Laws and building and safety codes governing the design and use of glazed entrance windows and curtain wall products vary widely. Kawneer does not control the selection of product configurations, structural hardware or glazing materials and assumes no responsibility therefor.

Kawneer reserves the right to change configurations without prior notice when deemed necessary for product improvement.  
© Kawneer Company Inc. 2014

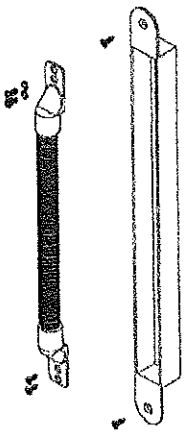
### BASIC WIRING DIAGRAM



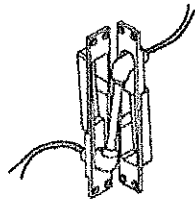
**Note:**

- a. All wiring to be coordinated with a licensed electrical installer.
- b. The PS1, PS5-4, and PS5-6 is the approved power supply for this exit device.
- c. Allows wire run from power supply to exit device of up to 700 feet with 18/2 wire.

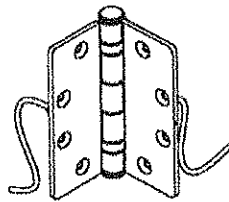
### POWER TRANSFERS



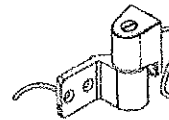
**EPT**  
KAWNEER #050396



**Von Duprin EPT**  
KAWNEER #138637 (2 Wires)

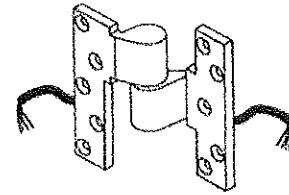


**EL BUTT HINGE**  
KAWNEER #037238



**KAWNEER EL OFFSET PIVOT**  
KAWNEER #050392-RH  
KAWNEER #050393-LH

**Note:**  
Do not disassemble hinge,  
wire breakage will occur.



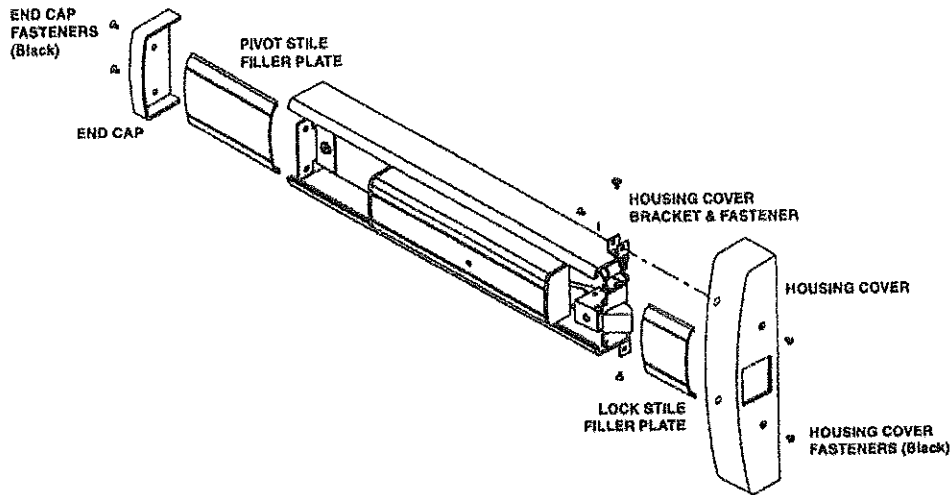
**OPTIONAL EL OFFSET PIVOT**  
KAWNEER #050397-RH  
KAWNEER #050398-LH

**Note:**  
Do not disassemble hinge,  
wire breakage will occur.

AVAILABLE WITH	EPT	KAWNEER EL BUTT HINGES	KAWNEER EL OFFSET PIVOT	OPTIONAL EL OFFSET PIVOT
190/350/500 STANDARD	X	X	X	X
HEAVY WALL	X	X		X
AA™250/AA™425	X	X	X	X

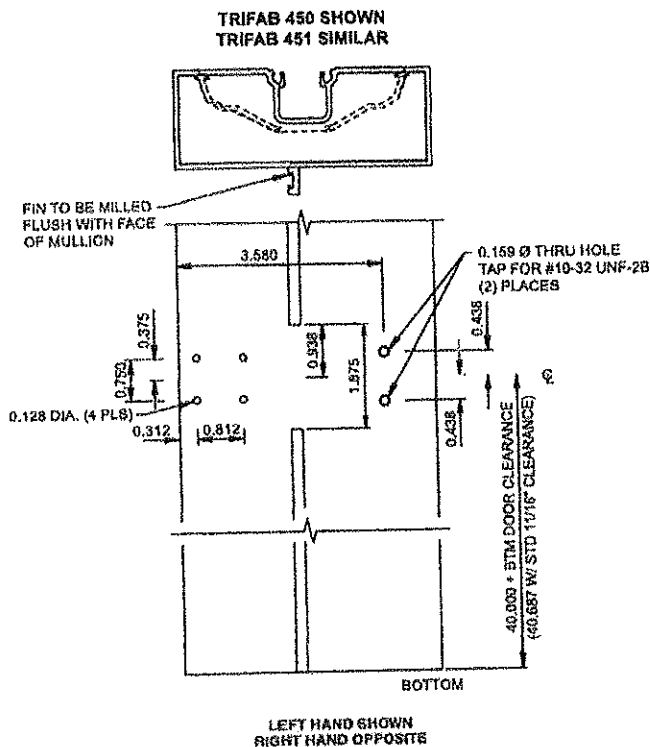
## FINAL ASSEMBLY

- 1) Slide pivot stile filler plate into device and attach pivot stile end cap with fasteners provided.
- 2) Slide lock stile filler plate into device.
- 3) Install housing cover brackets onto top and bottom of exit device with fasteners provided.
- 4) Install housing cover over brackets and attach with (Black) fasteners provided.

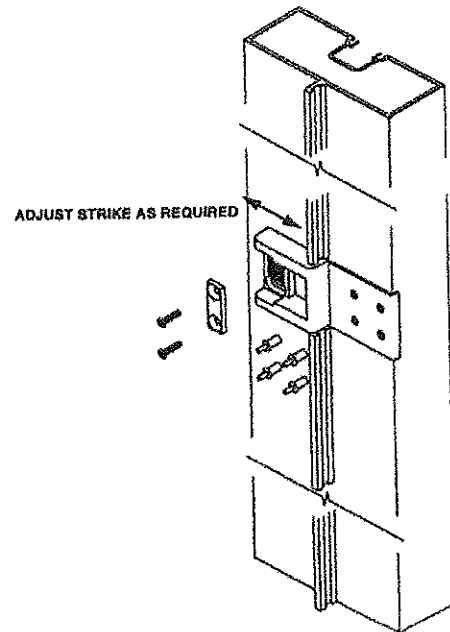


## STRIKE INSTALLATION AND ADJUSTMENT

- 1) Prep door jamb for strike as shown below.



- 2) Attach strike to door jamb with fasteners provided.
- 3) Close door and adjust strike as required to hold door tight against weathering.
- 4) Attach stainless steel rub plate with (4) 1/8" drive rivets provided.



Laws and building and safety codes governing the design and use of glazed entrances, windows, and curtain wall products vary widely. Kawneer does not control the selection of product configurations, operating hardware, or glazing materials and assumes no responsibility therefor.

Kawneer reserves the right to change configuration without prior notice when observed necessary for product improvement.  
 © Kawneer Company, Inc., 2014

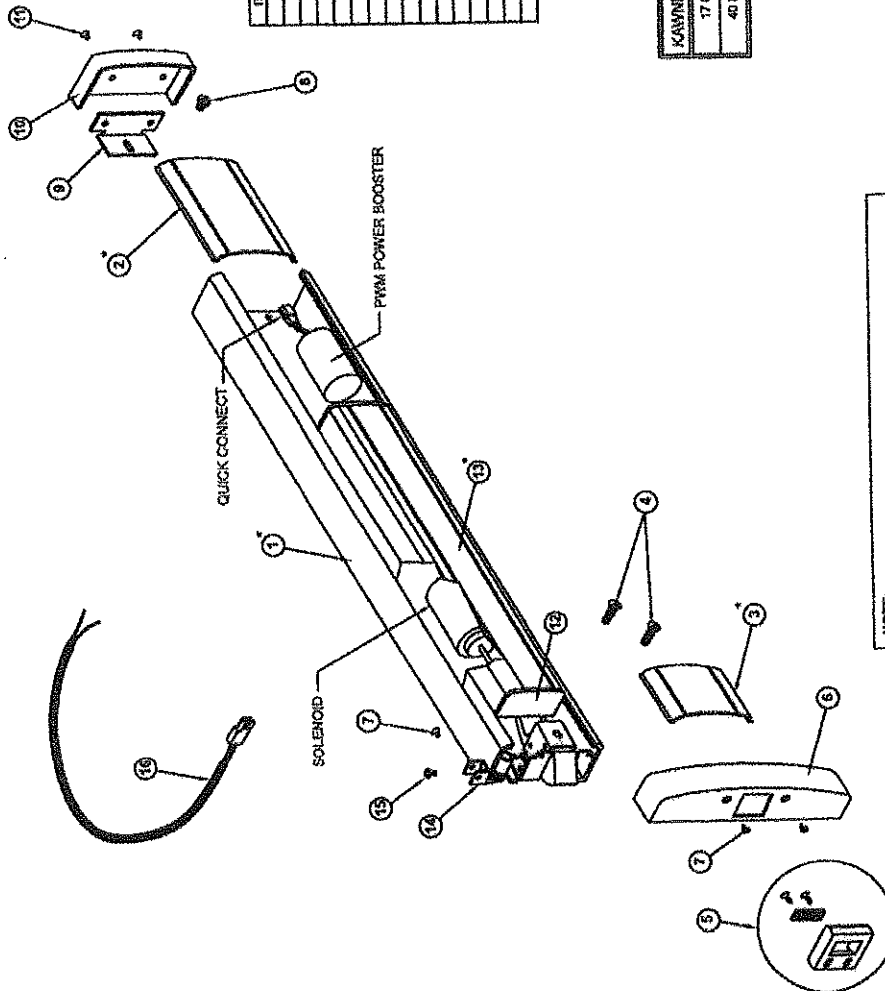
# KAWNEER 1786 EL RIM EXIT DEVICE

## INSTALLATION INSTRUCTIONS

APRIL, 2014

EC 95424-053

### KAWNEER 1786 EL RIM EXIT DEVICE PARTS BREAKDOWN



#### RIM EXIT DEVICE PACKAGE TO INCLUDE:

ITEM#	QTY	DESCRIPTION
1	1 EA	EXIT DEVICE BASE ASSEMBLY (SIZE ACCORDING TO PART NUMBER)
2	1 EA	HINGE/PIVOT FILLER PLATE (SIZE ACCORDING TO PART NUMBER)
3	1 EA	LATCH FILLER PLATE
4	1 EA	# 12-24 PAN/FLAT ATTACHMENT FASTENER
5	1 EA	# 8-32 STRIKE PACKAGE WITH FASTENERS AND LOCK BLOCK (133548)
6	1 EA	METAL HOUSING COVER (BLACK MATT FINISH)
7	4 EA	HOUSING COVER ATTACHMENT FASTENERS (BLACK)
8	1 EA	HINGE/PIVOT STUB ATTACHMENT FASTENER
9	1 EA	END CAP MOUNTING BRACKET
10	1 EA	HINGE/PIVOT END CAP (BLACK MATT FINISH)
11	2 EA	END CAP FASTENERS (BLACK)
12	2 EA	PUSH ROD END CAPS (BLACK MATT FINISH)
13	1 EA	PUSH ROD ASSEMBLY
14	2 EA	HOUSING COVER BRACKET
15	2 EA	HOUSING COVER BRACKET FASTENERS
16	1 EA	# 48 QUICK CONNECT CABLE (SHIPPED LOOSE)

\* INDICATES PART TO BE IN COLOR TO BLEND WITH THE DOOR FINISH

KAWNEER FINISH	MANUFACTURER FINISH
17 CLEAR	US286628
48 BRONZE	DB2 313

TOUCHBAR RIM EXIT DEVICE	SIZE	HANDEDNESS
133550EL	3'-0"	NON HANDED
133551EL	3'-6"	NON HANDED
133552EL	4'-0"	NON HANDED

**NOTE:**  
THE PS1 (050409), PS5-4 (050410) AND PS5-6 (050411) POWER SUPPLIES WILL BE USED EXCLUSIVELY WITH THE 1786 EXIT DEVICE ONLY. POWER SUPPLIES BY OTHERS WILL NOT BE PERMITTED AND ARE SUBJECT TO WARRANTY BEING VOID.

Learn about building and safety codes governing the design and use of glazed exits at [www.kawneer.com](http://www.kawneer.com) and consult with your local authority having jurisdiction. Kawneer does not control the applicability of building codes, nor does it warrant the accuracy of any information provided on this website. Kawneer is not responsible for any damages, including hardware, or glazing materials, and assumes no liability for any injury.

Kawneer reserves the right to change configuration without prior notice when deemed necessary to produce and improve.  
© Kawneer Company, Inc. 2014

Laws and building and safety codes governing the design and use of glazed exit doors, windows and curtain walls vary widely. Kawneer does not control the selection of product configurations, operating hardware or glazing materials and assumes no responsibility therefor.

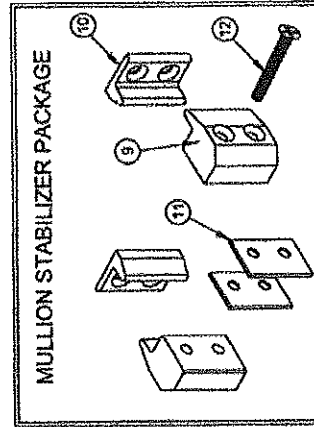
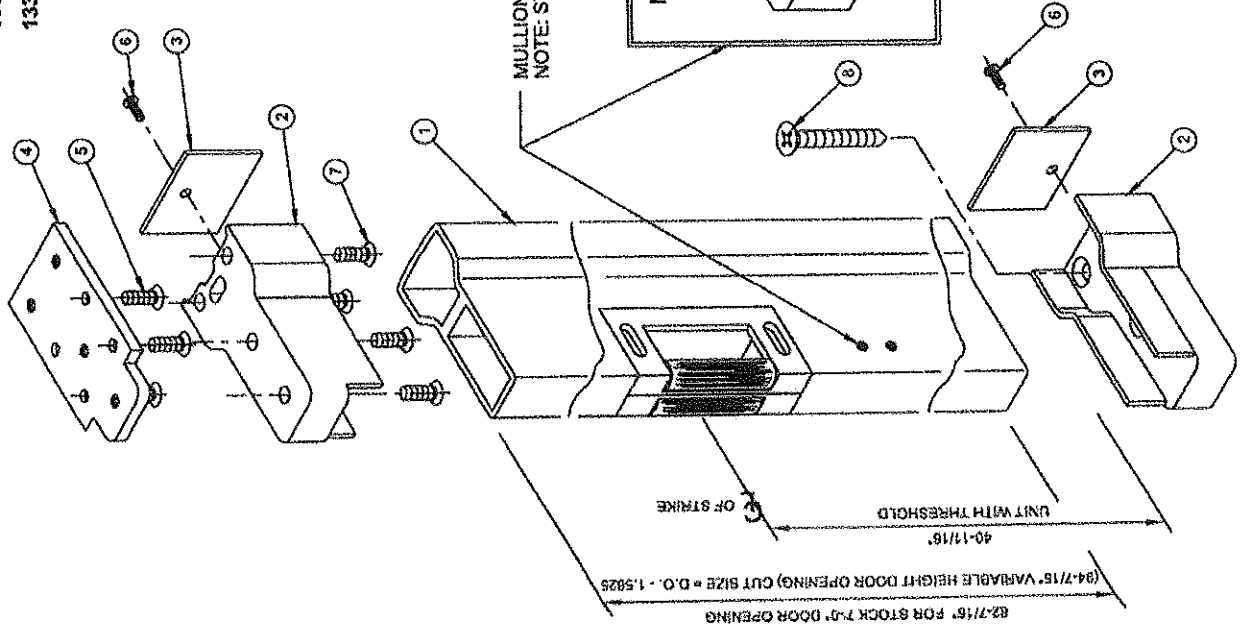
**133586 STANDARD HEIGHT (7'0" DO OR 82-7/16" PART)**  
**133587 VARIABLE HEIGHT TO (8'0" DO OR 94-7/16" PART)**

**REMOVABLE MULLION PACKAGE TO INCLUDE:**

EXIT DEVICE	ITEM #	QTY	DESCRIPTION
	1*	1 EA.	VERTICAL MULLION (SIZED ACCORDING TO PART NUMBER)
	2*	2 EA.	SHOE MULLION
	3*	2 EA.	BACK PLATE FOR SHOE MULLION
	4*	1 EA.	SHOE MULLION MOUNTING PLATE
	5	4 EA.	#1/4 x 1-1/2" FHFS - FASTENERS FOR UPPER SHOE MOUNTING PLATE TO HEAD
	6	2 EA.	1/4-20 x 7/8" CHMS - BACK PLATE ATTACHMENT FASTENERS
	7	4 EA.	1/4-20 x 3/4" FHMS - FASTENERS FOR UPPER SHOE TO PLATE
	8	4 EA.	1/4-20 x 1-1/8" FHMS W/ANCHORS - FASTENERS FOR LOWER SHOE TO FLOOR
	9	2 EA.	MULLION STABILIZERS
	10	2 EA.	DOOR STABILIZERS
	11	4 EA.	STABILIZER SHIMS
	12	8 EA.	#10-24 x 7/8" CHMS - FASTENERS FOR MULLION STABILIZERS

\* INDICATES PART TO BE IN COLOR TO BLEND WITH THE DOOR FINISH

KAWNEER FINISH	MANUFACTURER FINISH
17 CLEAR	US28628
40 BRONZE	DBZ 313

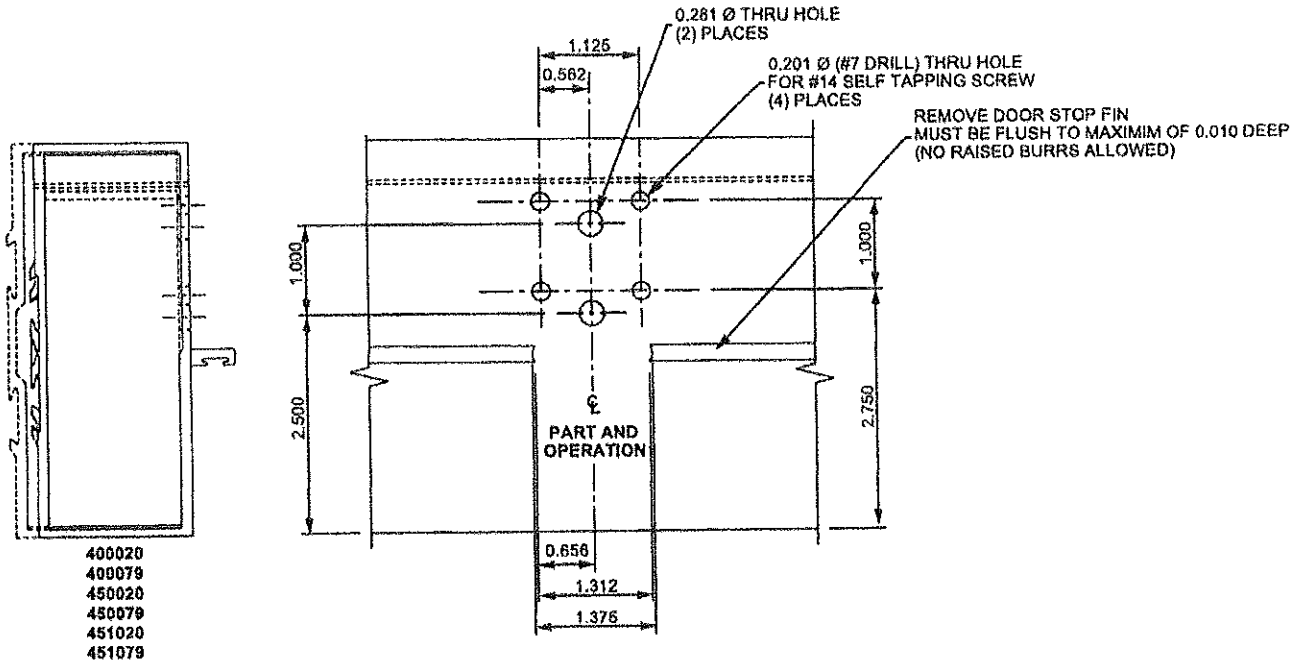


MULLION STABILIZER PREP  
NOTE: STABILIZERS SHIPPED WITH MULLION

Kawneer reserves the right to change configurations without prior notice when deemed necessary for product improvement.  
 © Kawneer Company, Inc., 2014

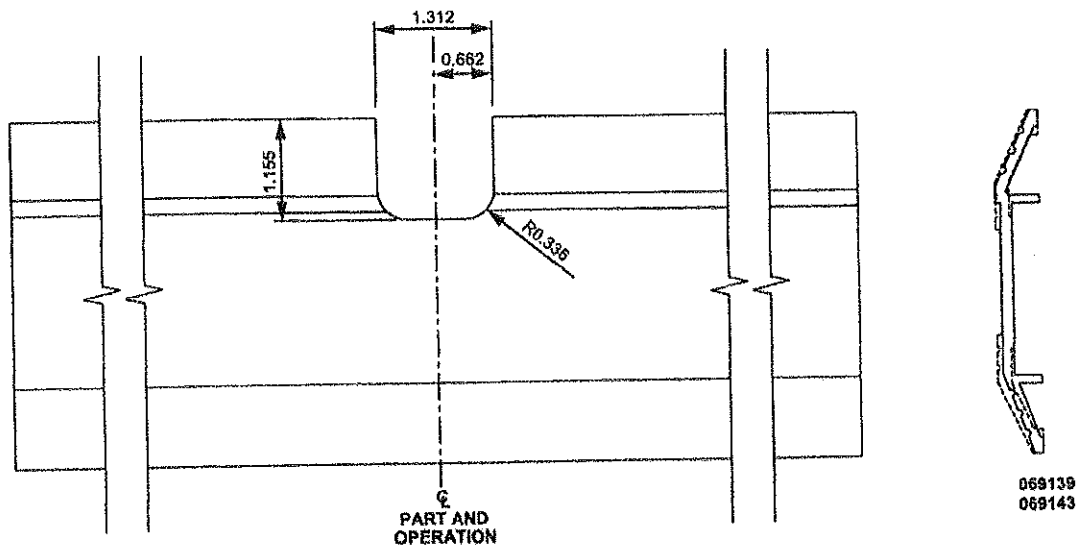
## REMOVABLE MULLION HEADER/T-BAR PREP

1) Prep Header/T-Bar as shown below.



## REMOVABLE MULLION THRESHOLD PREP

1) Field notch threshold as shown below.

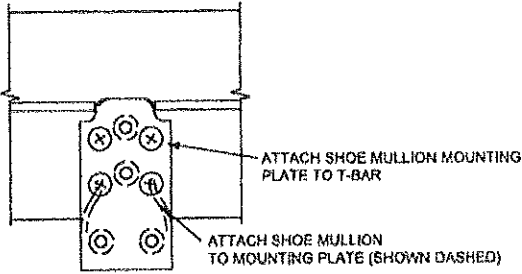


Law and building and safety codes governing the design and use of glazed entrance, window and curtain wall products vary widely. Kawneer does not control the selection of products, configurations, operating hardware, or glazing materials, and assumes no responsibility therefor.

Kawneer reserves the right to change configuration without prior notice when deemed necessary for product improvement.  
© Kawneer Company, Inc., 2014

### REMOVABLE MULLION INSTALLATION

- 1) Attach shoe mullion mounting plate to header/t-bar as shown.
- 2) Attach top shoe mullion to mounting plate on header/t-bar as shown.
- 3) Secure bottom shoe mullion to floor as shown.
- 4) Check removable mullion for correct length from bottom of mullion to centerline of strike.
  - a) Cut mullion to proper overall length if required.
- 5) Slip removable mullion into top shoe mullion, pick up and swing onto bottom shoe mullion.
- 6) Install back plate onto shoe mullion at header/t-bar and threshold. (See Figure #1)



SECTION "A-A"  
(TOP SHOE MULLION)

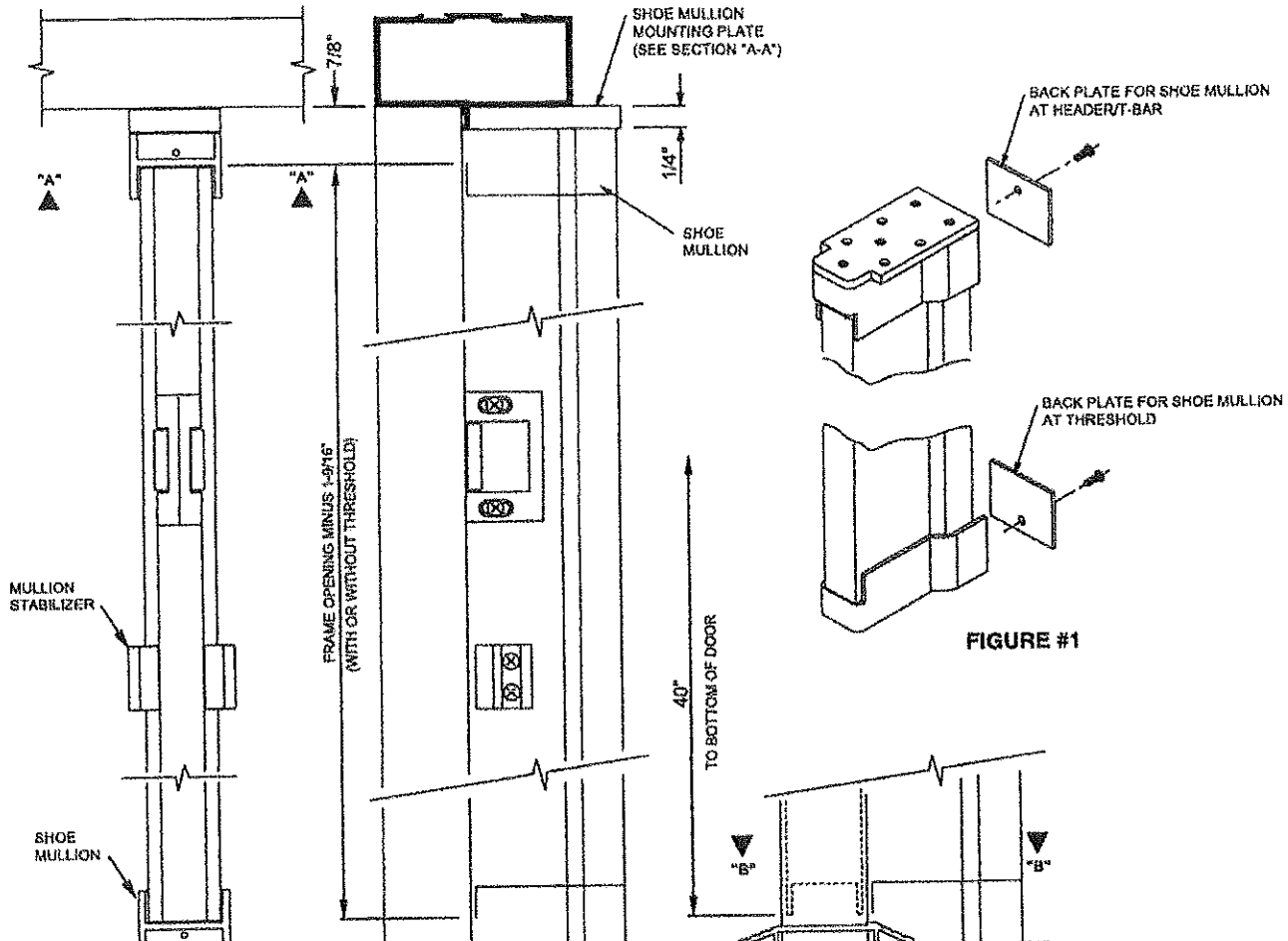


FIGURE #1

WITHOUT THRESHOLD

WITH THRESHOLD

C/L OF DOOR OPENING

EXTERIOR

SECTION "B-B"  
(BOTTOM SHOE MULLION)

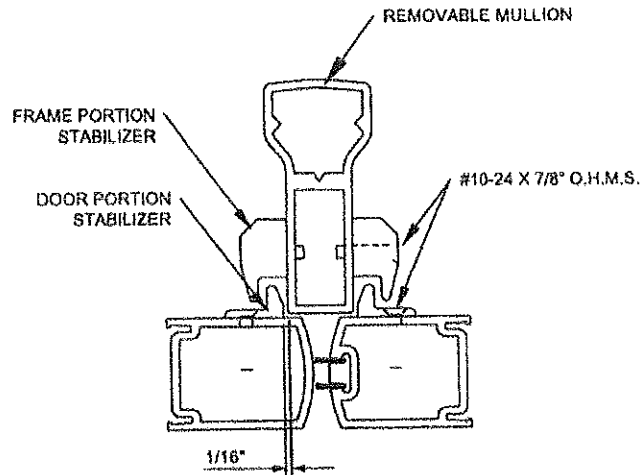
PREP FOR  
1/4-20 X 1-1/8" FHMS  
W/ 1/4-20 FLOOR ANCHOR

Kawneer and building and safety codes governing the design and use of glazed entrance, windows, and curtain walls products are hereby acknowledged. Kawneer does not control the selection of product configurations, supporting hardware, or glazing materials, and assumes no responsibility therefor.

Kawneer reserves the right to change configuration without prior notice when deemed necessary for product improvement.  
© Kawneer Company, Inc., 2014

**MULLION STABILIZER INSTALLATION**

- 1) Attach frame portion stabilizers in holes provided on mullion with 2 ea. #10-24 x 7/8" O.H.M.S.
- 2) Close door and align door portion on the door, allowing 1/16" for clearance, as shown.
- 3) Mark hole centers, drill and tap for #10-24 in door.
- 4) Attach door portion stabilizers to door with 2 ea. #10-24 x 7/8" O.H.M.S.




Leave and install per safety code governing the design and use of glazed entrance, egress, and exit doors and windows. Kawneer does not control the selection of product configurations, size, or quality of materials, or assume any responsibility for them.

Kawneer reserves the right to change configurations without prior notice when deemed necessary for product improvement.  
© Kawneer Company, Inc., 2014

# KAWNEER 1786 EL RIM EXIT DEVICE

## TROUBLESHOOTING GUIDE

Symptom	Cause	Solution
Intermittent EL device operation	Wrong power supply is used	PS1, PS5-4 or PS5-6 are the only approved power supplies
	Too many EL devices are run on a power supply	PS1 - runs 2 devices
		PS5-4 - runs 4 devices
		PS5-6 - runs 6 devices
	Wire size too small	Correct wire gauge is minimum of 18/2
	Wire run too long	Allowable wire run from power supply to exit device is 700 feet
	Wire run from power supply to devices has been split	No splitting is allowed
	Output power is not run directly to exit device	PS1 has 1 output which accommodate 2 wires for 2 devices (one wire per device). PS5-4 has 4 outputs which accommodate 1 wire per output for each device (up to 4 devices). PS5-6 has 6 outputs which accommodate 1 wire per output for each device (up to 6 devices).
	Poor power transfer connection	Inspect power transfer connection for any broken wires
Wiring not coordinated with licensed electrical installer	EL wiring should always be coordinated with licensed electrical installer	
Latch not releasing upon electrical activation - Binding	Door is not installed plumb within framing system	Adjust door to eliminate bind
	Hold open time on access control is not set correctly.	Check hold open time on access control.
	PWM300 module is not set correctly.	PWM300 module should be set at 1 for the 1786 exit device. This switch should be factory set by Command Access.
	Power supply voltage not set to full power.	Check output voltage adjustment in our power supplies. Increasing the voltage to full power will resolve most issues when pair of doors are activated at the same time.
		- To adjust output voltage, locate adjustment dial shown
		- Turn adjustment dial clockwise to increase output voltage 
Excessive stack pressure	Contact building owner to have HVAC system adjusted.	

If the above troubleshooting questions did not resolve all issues. Please call Command Access at 888-622-2377 for technical assistance. Contact information is located within the PS1, PS5-4 or PS6-5 power supply.

Users and building and safety codes governing the design and use of glass and window products. Kawneer will not be responsible for the selection of product configurations, operating hardware, or glass materials and assumes no responsibility therefor.

Kawneer reserves the right to change configuration without prior notice when deemed necessary for product improvement.  
© Kawneer Company, Inc., 2014

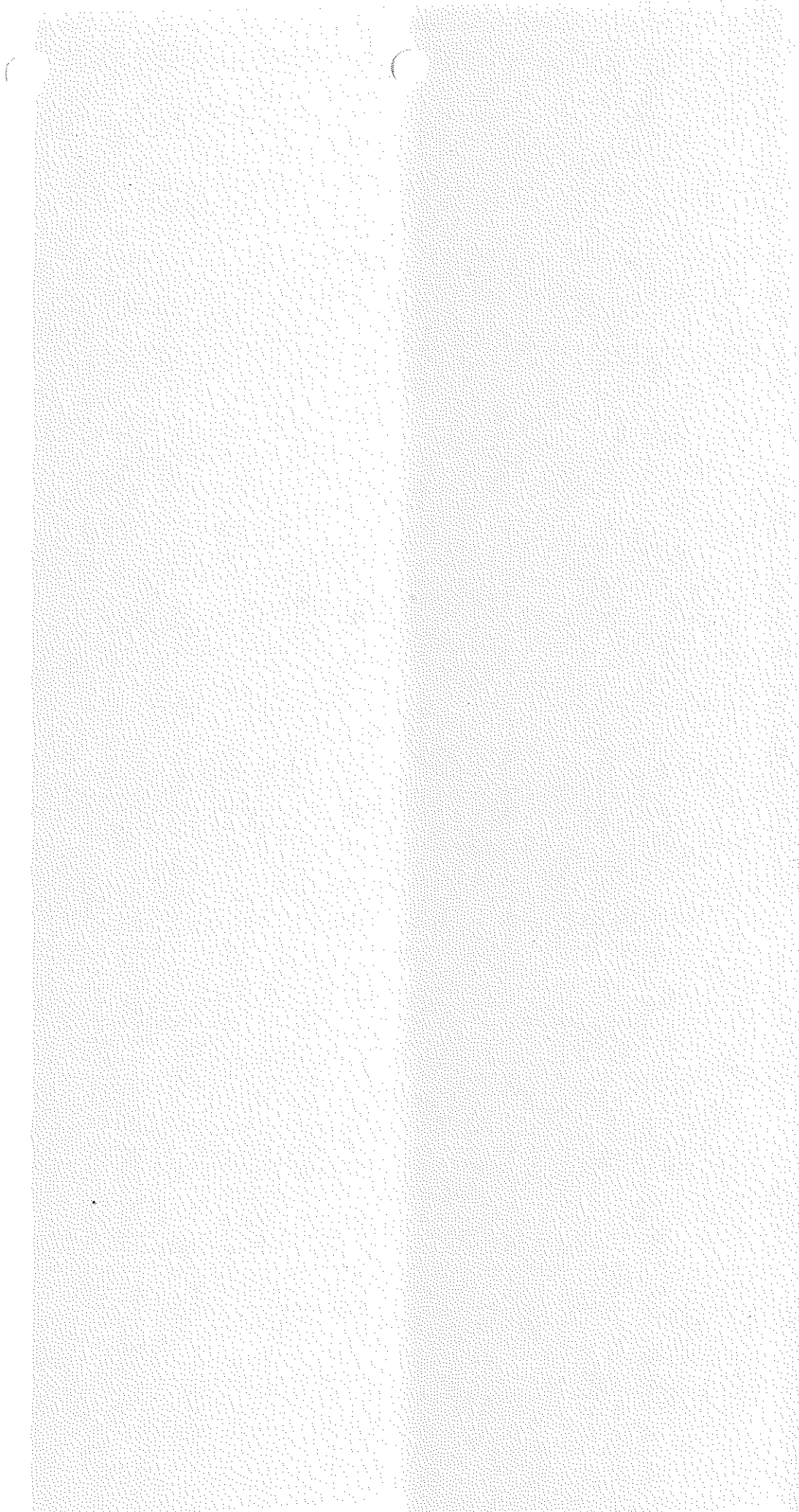
# KAWNEER 1786 EL RIM EXIT DEVICE

BLANK PAGE

APRIL, 2014  
EC 95424-053

Lines are holding and safety codes governing the design and use of glass windows, doors and panels will probably vary widely. Kawneer does not control the selection of product configurations, operating conditions, or glass materials. It is the user's responsibility to ensure that the glass used is suitable for the intended application.

Kawneer reserves the right to change configurations without prior notice when deemed necessary for product improvement.  
© Kawneer Company, Inc. 2014



# Alcocer Garcia Associates, Inc.

1333 E. Jasmine Ave McAllen, Texas 78501 Off. 956-618-2007 Fax. 956-618-2008

February 5, 2015

To: Manuel Ornelas, D. Wilson Construction Co.  
Project: Renovations to Former Administration Building, 1st & 2<sup>nd</sup> Floors.

## REQUEST FOR PROPOSAL O37 1st FLOOR VAULT FLOORING

### Changes:

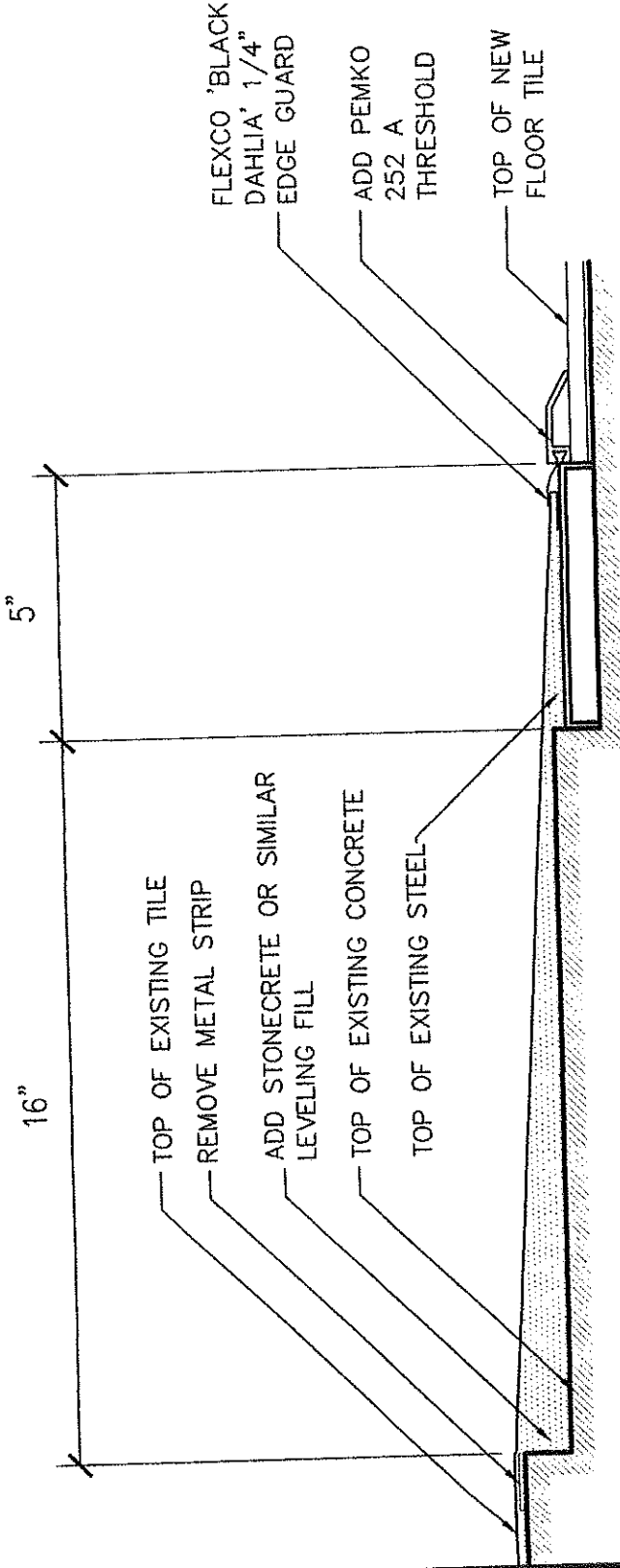
1. Delete carpet at Conference Room. Provide credit figure.
2. Clean existing tile flooring in Conference Room by removing any loose material. Broom sweep floor then wet mop. Let dry. Apply one coat of locally available Tile Guard Premium Penetrating Sealer as per printed instructions.
3. Carpet to be installed in vestibule and at vault door threshold. See attached drawing for threshold installations.
4. Vinyl edge guards for carpet to be at location shown drawing and at door between Vestibule and Conference Room. Install Flexco Black Dahlia 1/4" Carpet Edge Guard, or equal.

  
George A. Garcia,  
Project Architect

THE USE OF THESE  
DRAWINGS IS RESTRICTED TO  
THE ORIGINAL CONTRACT  
UNLESS THEY HAVE BEEN  
REPRODUCED WITH THE  
WRITTEN PERMISSION FROM  
THE ENGINEER'S FIRM.

PROJECT #  
OWNER  
DESIGNED BY:  
CHECKED BY:  
FILE NAME:

SHEET:  
**1 OF 1**  
2.6.2015



# VAULT THRESHOLD DETAIL - RFP 037

NO SCALE

D. Wilson Construction Company

P.O. Box 3455  
McAllen, TX 78502-3455  
Ph : (956) 686-9573

**Change Request**

To: George A. Garcia (Alcocer Garcia)

Number: 95-A

Date: 3/16/15

Job: 12-561 Remodel Administration Bldg

Phone:

Description: Per RFP #037, scraping, cleaning, staining and sealing of vault floor.

Source: Other # RFP#037

We are pleased to offer the following specifications and pricing to make the following changes:

Per RFP#037.01, 2.20.15, the scraping, cleaning, staining and sealing and associated additional work of the 1st vault floor after any credit is factored in. Please note the exact condition of the completed floor cannot be guaranteed to appear as the sample area which was presented. This Change Request #95-A supercedes previous Change Request #95. Thank you.

Description	Labor	Material	Equipment	Subcontract	Other	Price
Tile				\$3,939.00		\$3,939.00
					Subtotal:	\$3,939.00
					Total:	\$3,939.00

The schedule will be impacted.

If you have any questions, please contact me at .

Submitted by: Manuel M. Ornelas, D. Wilson C

Approved by: \_\_\_\_\_

Date: \_\_\_\_\_

Cc: Ed Alcocer, AGADC, Horacio Quintero (D. Wilson Construction Co.), apalacios@prodigycompany.com

Renovation to Emr HC Admin Bldg.

RFP#037.1  
Revised

DATE: 3.16.15  
Completion

Math Check

- 01-010 General Conditions
- 01-405 Building Permit/Demo Permit
- SW/P/Inspections
- Allowances:
- 01-001 Contingency Allowance
- Graphics Allowance
- Irrigation/ Landscaping Allowance/
- HVAC Testing & Balance Allowance
- Rebar Allowance (400 lbs)
- Struc. Steel Allowance (5 Tons)
- Testing

SUBTOTAL

**02-000** **SITENORK**

- 02-050 Site & Interior Demo
- 02-150 Sitework Contractor
- 02-150 Utilities
- 02-830 Chain Link Fencing
- 02-282 Termite Control
- 02-290 Landscape/Irrigation Pavers/Mulch
- Striping
- Splashblocks

SUBTOTAL:

**03-000** **CONCRETE**

- 03-070 Concrete Material
- 02-289 Sidewalk Concrete Material
- 02-836 Wrought Iron Fencing
- 03-100 Concrete Sub w/materials

DATE: 3.16.15  
Completion

Renovation to Fmr HC Admin Bldg

REP#037.1  
Revised

Math Check

**09-000 FINISHES**

09-100 Gypsum Wall Board Systems  
09-200 Lath & Plaster  
09-500 Acoustical Lay In Ceiling  
09-310 Ceramic Tile  
09-520 Acoustical Wall Panels, Fabrics, Diffusers  
09-520 Acoustical Labor  
09-670 Resinous Flooring  
09-680 Carpet  
09-685 VCT  
09-629 Floor Protection Temporary  
09-900 Painting/VWC

3,567

3,567

SUBTOTAL:

3,567

-

**10-000 SPECIALTIES: LABOR INCLUDED ON EACH LINE ITEM**

10-100 TV Mount Brackets (50)  
10-100 TV Mount Brackets Labor  
10-100 Maunual Projection Screens (52 & 1 Oversized)  
10-100 Maunual Projection Screens Labor  
10-100 Motorized Projection Screens  
10-100 Motorized Projection Screens Labor  
10-100 Curtain and Curtain Track (3 @ A115)  
10-100 Curtain and Curtain Track Labor  
10-260 Corner Guards  
10-260 Corner Guards Labor  
10-100 Library Security System  
10-100 Library Security System Labor  
10-100 Ice Machine  
10-100 Ice Machine labor



DATE:  
Completion

Renovation to Fmr HC Admin Bldg  
3.16.15

REP#037.1  
Revised

Math Check

PROJECT TOTAL:

3939

0

main is correct

February 23, 2015

Manuel M. Ornelas  
Project Manager  
D. Wilson Construction  
Mobile: 956-336-8577

Re: Remodel Former Hidalgo Administration Bldg  
Conference RM#112

Dear Manuel,

Our proposal is to provide materials and labor necessary to install:

-Remove floor prep that was used over existing quarry/paver tile in conference RM #112. We will clean the tile as much as possible to try and keep the original texture. We cannot guarantee we will be able to obtain the original color.  
**Removing Floor Prep -Complete for the sum of: \$2,617.00 no tax**

-We will stain the concrete where walls were removed and filled with floor prep. We will try to match the color as closest to the existing pavers.  
**Stain Concrete where walls were removed-Complete for the sum of: \$950.00**

**Remove floor prep and stain concrete: Complete for the sum of \$3,567.00 no tax**

The proposal **excludes** tax, major subfloor preparation, mopping, waxing & vacuuming, moving furniture and/or computer equipment, and the protection of our product from damage by other trades.

**Price is valid for a period of 30 days from date of issue.**

Respectfully submitted,  
INTERTECH FLOORING - Mission

\_\_\_\_\_  
Vicento Garza  
Project Manager-Estimator



AUSTIN  
1106 Smith Road  
Suite 100  
Austin, TX 78721  
p (512) 385-4574  
f (512) 385-4577

DALLAS / FORT WORTH  
1621 W. Crosby Road  
Suite 104  
Carrollton, TX 75006  
p (812) 912-3200  
f (817) 912.3232

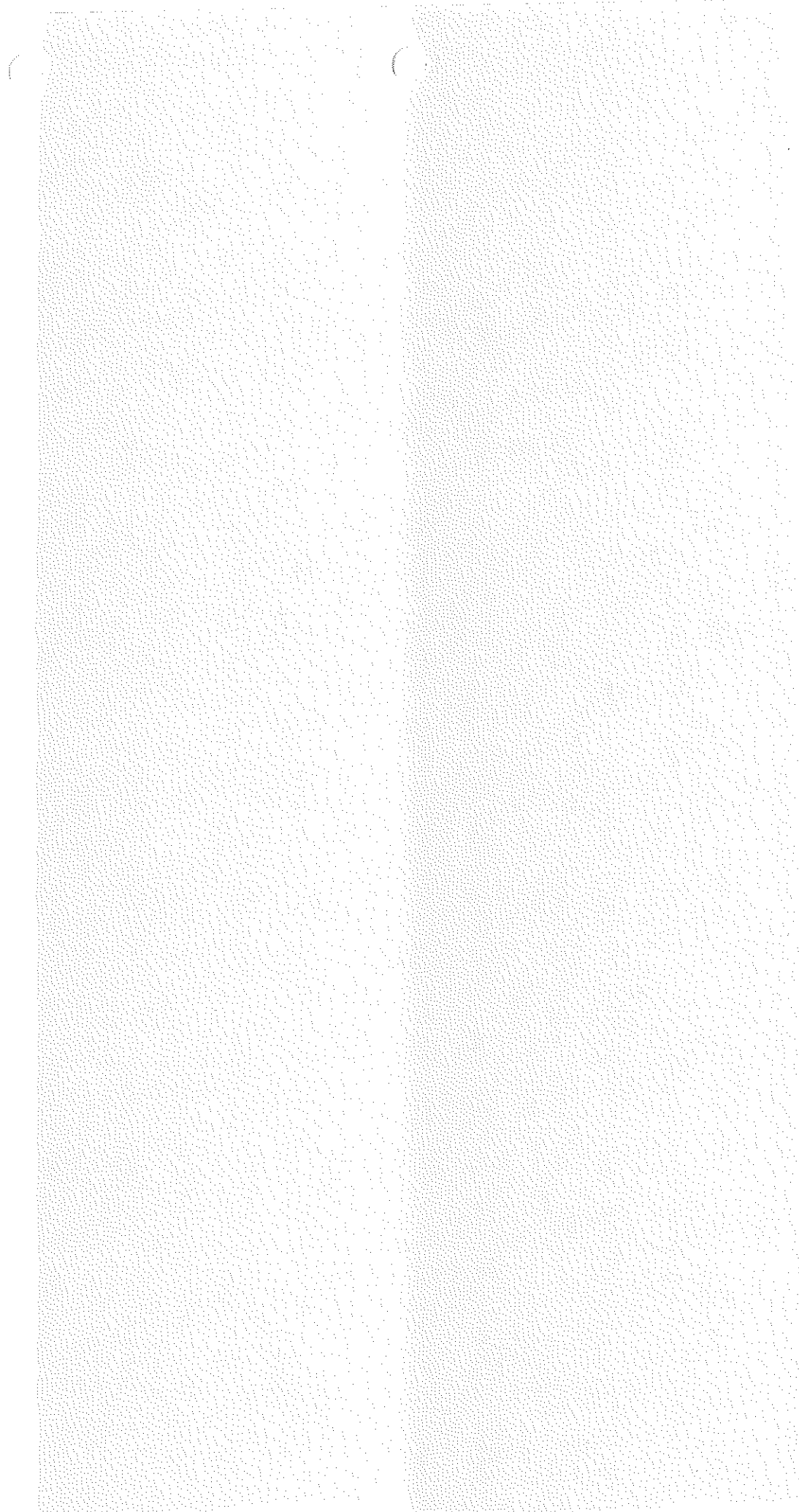
RIO GRANDE VALLEY  
1301 Business Park Dr.  
Suite D  
Mission, TX 78572  
p (956) 584-3592  
f (956) 584-2149

SAN ANTONIO  
11827 Tech Com Road  
Suite 100  
San Antonio, TX 78233  
p (210) 650-9670  
f (210) 590-6274

[www.intertechflooring.com](http://www.intertechflooring.com)

W.E. Imhoff & Company, Incorporated





Alcócer García Associates, Inc.

AGA

March 2, 2015

**REQUEST FOR PROPOSAL  
041  
REVISIONS TO DISTRICT ATTORNEY'S OFFICE  
SECOND FLOOR**

FOR PRICING PURPOSES ONLY:

Mr. Ornelas;

Provide pricing for the attached revisions to Areas 282, 283, 284, 285, 286, 288, 289, & 290.  
Reuse existing Solid Core Doors and Hardware where possible.

Provide pricing at your earliest opportunity.

Alcócer García Associates, Inc.

*Eduardo Alcócer*

Eduardo Alcócer

# RFP 041

1st AND 2nd FLOORS REMODEL  
FORMER ADMINISTRATION BUILDING

HIDALGO COUNTY, TEXAS  
CITY OF EDINBURG, TEXAS

CHANGES TO DISTRICT ATTORNEY'S OFFICE  
SECOND FLOOR

NOT FOR REGULATORY APPROVAL, PERMITTING, OR CONSTRUCTION

GEORGE A GARCIA, ARCHITECT  
MARCH 02, 2015

AJWA

Arceer Garcia Associates, Inc.

1333 E. Judd Ave.  
Madison, Texas 77021  
Office: 555.818.2007  
Fax: 555.818.2008

1st AND 2nd FLOORS REMODEL  
FORMER ADMINISTRATION BUILDING  
HIDALGO COUNTY, TEXAS

THE USE OF  
THIS PLAN IS  
RESTRICTED TO THE  
PROJECT, SITE, AND  
DATE SPECIFICALLY  
NOTED ON THIS PLAN.  
NO OTHER REUSE OR  
REPRODUCTION OF  
THIS PLAN IS PERMITTED.

GENERAL CONTRACTOR  
NAME: N/A  
ADDRESS: N/A  
CITY: N/A  
STATE: N/A  
DATE: N/A  
FILE NUMBER: N/A  
SHEET:

0

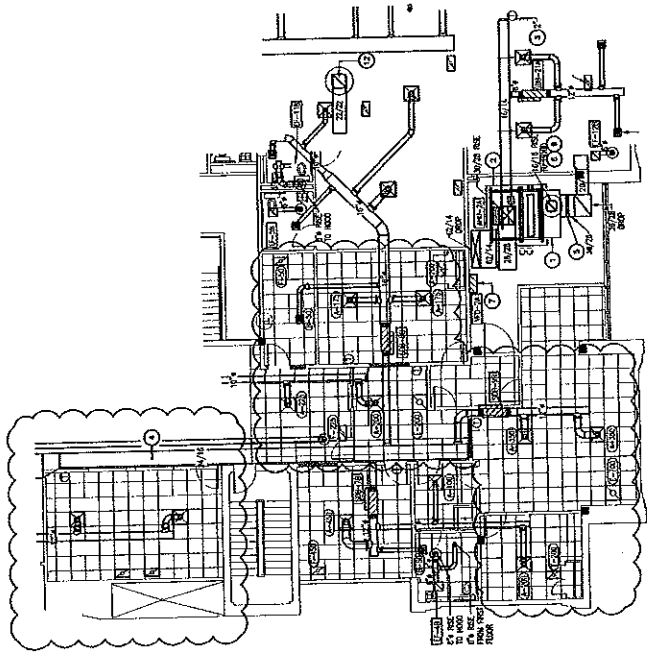




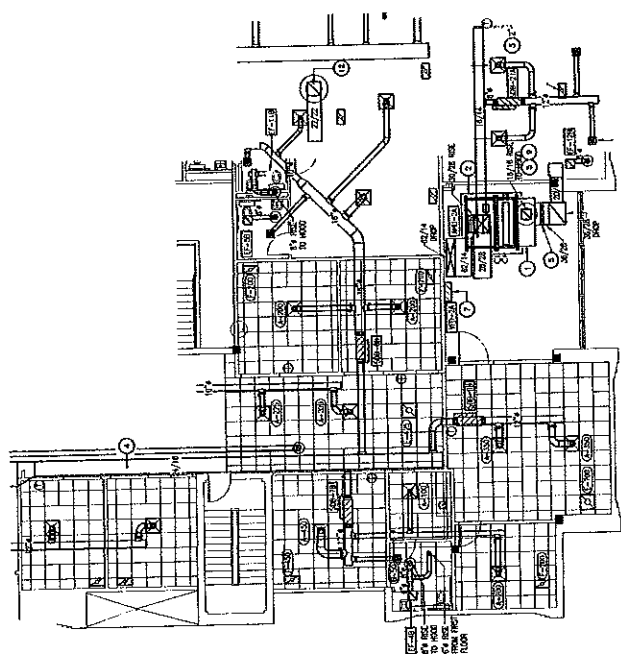
THE USE OF  
 DRAWINGS IS RESTRICTED TO THE PROJECT AND SITE SPECIFICALLY IDENTIFIED. ANY OTHER USE WITHOUT THE WRITTEN PERMISSION FROM THE OWNER IS PROHIBITED.



DATE: 3.03.15  
 DRAWN BY: L.S.  
 CHECKED BY: J.P.  
 FILE NAME: M-02B  
 SHEET:



PARTIAL MECHANICAL SECOND FLOOR PLAN - REMODEL PLAN  
 SCALE: 1/8" = 1'-0"



PARTIAL MECHANICAL SECOND FLOOR PLAN - DEMOLITION PLAN  
 SCALE: 1/8" = 1'-0"



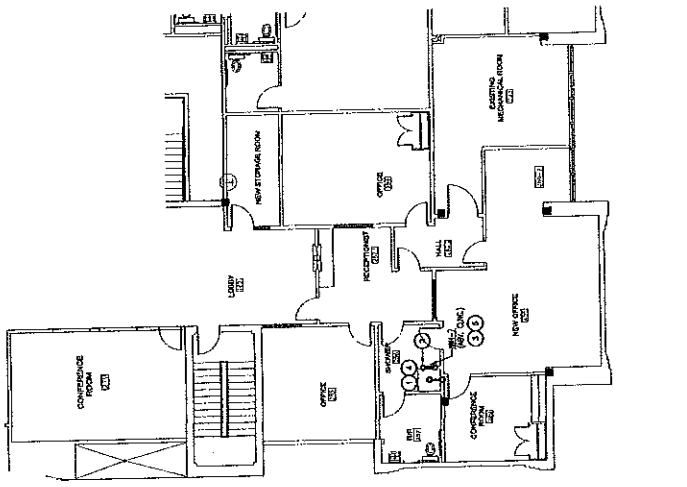
THE USE OF THIS DRAWING IS PERMITTED ONLY FOR THE PROJECT AND SITE SPECIFIC FOR WHICH IT WAS PREPARED. ANY OTHER USE WITHOUT THE WRITTEN PERMISSION FROM THE OWNER IS PROHIBITED.



DATE: 3.03.15  
 DRAWN BY: L.S.  
 CHECKED BY: P.S.  
 THE ENGINEER'S SEAL

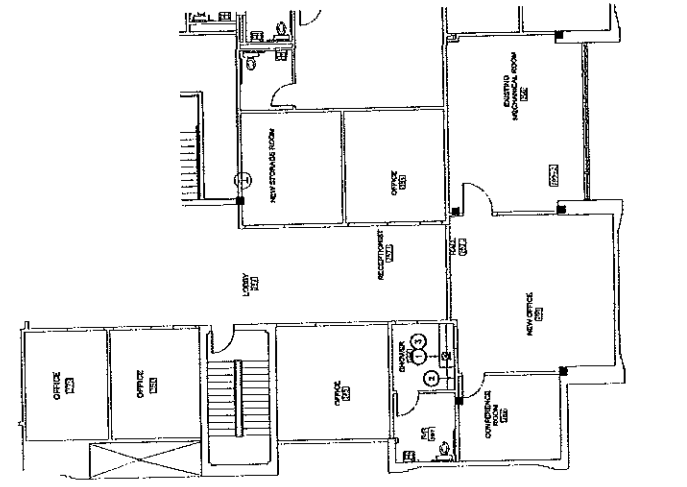
Sheet: P-2  
 P-4

- GENERAL NOTES:**
- ALL WORK SHALL BE IN ACCORDANCE WITH THE CITY OF EDINBURG, TEXAS PLUMBING CODE AND THE TEXAS PLUMBING CODE.
  - PLUMBING CONTRACTOR SHALL BE RESPONSIBLE FOR OBTAINING ALL NECESSARY PERMITS AND INSURANCE.
  - PLUMBING CONTRACTOR SHALL MAINTAIN ACCESS TO ALL EXISTING UTILITIES AND SHALL BE RESPONSIBLE FOR PROTECTING THEM.
  - PLUMBING CONTRACTOR SHALL MAINTAIN ACCESS TO ALL EXISTING UTILITIES AND SHALL BE RESPONSIBLE FOR PROTECTING THEM.
  - PLUMBING CONTRACTOR SHALL MAINTAIN ACCESS TO ALL EXISTING UTILITIES AND SHALL BE RESPONSIBLE FOR PROTECTING THEM.
  - PLUMBING CONTRACTOR SHALL MAINTAIN ACCESS TO ALL EXISTING UTILITIES AND SHALL BE RESPONSIBLE FOR PROTECTING THEM.
  - PLUMBING CONTRACTOR SHALL MAINTAIN ACCESS TO ALL EXISTING UTILITIES AND SHALL BE RESPONSIBLE FOR PROTECTING THEM.
  - PLUMBING CONTRACTOR SHALL MAINTAIN ACCESS TO ALL EXISTING UTILITIES AND SHALL BE RESPONSIBLE FOR PROTECTING THEM.
  - PLUMBING CONTRACTOR SHALL MAINTAIN ACCESS TO ALL EXISTING UTILITIES AND SHALL BE RESPONSIBLE FOR PROTECTING THEM.
  - PLUMBING CONTRACTOR SHALL MAINTAIN ACCESS TO ALL EXISTING UTILITIES AND SHALL BE RESPONSIBLE FOR PROTECTING THEM.
- KEY NOTES:**
- PLUMBING CONTRACTOR SHALL MAINTAIN ACCESS TO ALL EXISTING UTILITIES AND SHALL BE RESPONSIBLE FOR PROTECTING THEM.
  - PLUMBING CONTRACTOR SHALL MAINTAIN ACCESS TO ALL EXISTING UTILITIES AND SHALL BE RESPONSIBLE FOR PROTECTING THEM.
  - PLUMBING CONTRACTOR SHALL MAINTAIN ACCESS TO ALL EXISTING UTILITIES AND SHALL BE RESPONSIBLE FOR PROTECTING THEM.
  - PLUMBING CONTRACTOR SHALL MAINTAIN ACCESS TO ALL EXISTING UTILITIES AND SHALL BE RESPONSIBLE FOR PROTECTING THEM.
  - PLUMBING CONTRACTOR SHALL MAINTAIN ACCESS TO ALL EXISTING UTILITIES AND SHALL BE RESPONSIBLE FOR PROTECTING THEM.
  - PLUMBING CONTRACTOR SHALL MAINTAIN ACCESS TO ALL EXISTING UTILITIES AND SHALL BE RESPONSIBLE FOR PROTECTING THEM.
  - PLUMBING CONTRACTOR SHALL MAINTAIN ACCESS TO ALL EXISTING UTILITIES AND SHALL BE RESPONSIBLE FOR PROTECTING THEM.
  - PLUMBING CONTRACTOR SHALL MAINTAIN ACCESS TO ALL EXISTING UTILITIES AND SHALL BE RESPONSIBLE FOR PROTECTING THEM.
  - PLUMBING CONTRACTOR SHALL MAINTAIN ACCESS TO ALL EXISTING UTILITIES AND SHALL BE RESPONSIBLE FOR PROTECTING THEM.
  - PLUMBING CONTRACTOR SHALL MAINTAIN ACCESS TO ALL EXISTING UTILITIES AND SHALL BE RESPONSIBLE FOR PROTECTING THEM.



PARTIAL PLUMBING SECOND FLOOR PLAN - DEMOLITION PLAN  
 SCALE: 1/8" = 1'-0"

- GENERAL DEMOLITION NOTES:**
- ALL WORK SHALL BE IN ACCORDANCE WITH THE CITY OF EDINBURG, TEXAS PLUMBING CODE AND THE TEXAS PLUMBING CODE.
  - PLUMBING CONTRACTOR SHALL BE RESPONSIBLE FOR OBTAINING ALL NECESSARY PERMITS AND INSURANCE.
  - PLUMBING CONTRACTOR SHALL MAINTAIN ACCESS TO ALL EXISTING UTILITIES AND SHALL BE RESPONSIBLE FOR PROTECTING THEM.
  - PLUMBING CONTRACTOR SHALL MAINTAIN ACCESS TO ALL EXISTING UTILITIES AND SHALL BE RESPONSIBLE FOR PROTECTING THEM.
  - PLUMBING CONTRACTOR SHALL MAINTAIN ACCESS TO ALL EXISTING UTILITIES AND SHALL BE RESPONSIBLE FOR PROTECTING THEM.
  - PLUMBING CONTRACTOR SHALL MAINTAIN ACCESS TO ALL EXISTING UTILITIES AND SHALL BE RESPONSIBLE FOR PROTECTING THEM.
  - PLUMBING CONTRACTOR SHALL MAINTAIN ACCESS TO ALL EXISTING UTILITIES AND SHALL BE RESPONSIBLE FOR PROTECTING THEM.
  - PLUMBING CONTRACTOR SHALL MAINTAIN ACCESS TO ALL EXISTING UTILITIES AND SHALL BE RESPONSIBLE FOR PROTECTING THEM.
  - PLUMBING CONTRACTOR SHALL MAINTAIN ACCESS TO ALL EXISTING UTILITIES AND SHALL BE RESPONSIBLE FOR PROTECTING THEM.
  - PLUMBING CONTRACTOR SHALL MAINTAIN ACCESS TO ALL EXISTING UTILITIES AND SHALL BE RESPONSIBLE FOR PROTECTING THEM.
- PLUMBING DEMOLITION KEY NOTES:**
- PLUMBING CONTRACTOR SHALL MAINTAIN ACCESS TO ALL EXISTING UTILITIES AND SHALL BE RESPONSIBLE FOR PROTECTING THEM.
  - PLUMBING CONTRACTOR SHALL MAINTAIN ACCESS TO ALL EXISTING UTILITIES AND SHALL BE RESPONSIBLE FOR PROTECTING THEM.
  - PLUMBING CONTRACTOR SHALL MAINTAIN ACCESS TO ALL EXISTING UTILITIES AND SHALL BE RESPONSIBLE FOR PROTECTING THEM.
  - PLUMBING CONTRACTOR SHALL MAINTAIN ACCESS TO ALL EXISTING UTILITIES AND SHALL BE RESPONSIBLE FOR PROTECTING THEM.
  - PLUMBING CONTRACTOR SHALL MAINTAIN ACCESS TO ALL EXISTING UTILITIES AND SHALL BE RESPONSIBLE FOR PROTECTING THEM.
  - PLUMBING CONTRACTOR SHALL MAINTAIN ACCESS TO ALL EXISTING UTILITIES AND SHALL BE RESPONSIBLE FOR PROTECTING THEM.
  - PLUMBING CONTRACTOR SHALL MAINTAIN ACCESS TO ALL EXISTING UTILITIES AND SHALL BE RESPONSIBLE FOR PROTECTING THEM.
  - PLUMBING CONTRACTOR SHALL MAINTAIN ACCESS TO ALL EXISTING UTILITIES AND SHALL BE RESPONSIBLE FOR PROTECTING THEM.
  - PLUMBING CONTRACTOR SHALL MAINTAIN ACCESS TO ALL EXISTING UTILITIES AND SHALL BE RESPONSIBLE FOR PROTECTING THEM.
  - PLUMBING CONTRACTOR SHALL MAINTAIN ACCESS TO ALL EXISTING UTILITIES AND SHALL BE RESPONSIBLE FOR PROTECTING THEM.



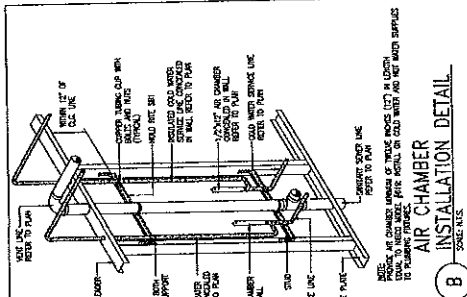
PARTIAL PLUMBING SECOND FLOOR PLAN - REMODEL PLAN  
 SCALE: 1/8" = 1'-0"

PLUMBING FIXTURE SCHEDULE

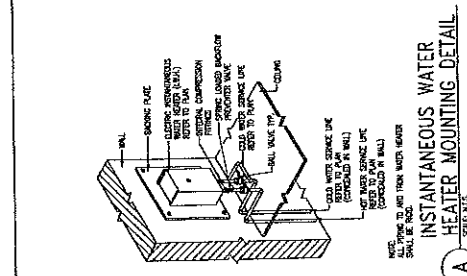
MARK	FIXTURE TYPE	QUANTITY	LOCATION
101	TOILET	1	OFFICE
102	SINK	1	OFFICE
103	SINK	1	OFFICE
104	SINK	1	OFFICE
105	SINK	1	OFFICE
106	SINK	1	OFFICE
107	SINK	1	OFFICE
108	SINK	1	OFFICE
109	SINK	1	OFFICE
110	SINK	1	OFFICE

PLUMBING SYMBOL LEGEND

SYMBOL	DESCRIPTION	SYMBOL	DESCRIPTION
(Symbol)	COLD WATER	(Symbol)	TOILET
(Symbol)	WATER	(Symbol)	SINK
(Symbol)	WATER	(Symbol)	SINK
(Symbol)	WATER	(Symbol)	SINK
(Symbol)	WATER	(Symbol)	SINK
(Symbol)	WATER	(Symbol)	SINK
(Symbol)	WATER	(Symbol)	SINK
(Symbol)	WATER	(Symbol)	SINK
(Symbol)	WATER	(Symbol)	SINK
(Symbol)	WATER	(Symbol)	SINK



AIR CHAMBER INSTALLATION DETAIL  
 SCALE: 1/2" = 1'-0"



INSTANTANEOUS WATER HEATER MOUNTING DETAIL  
 SCALE: 1/2" = 1'-0"

D. Wilson Construction Company

P.O. Box 3455  
McAllen, TX 78502-3455  
Ph : (956) 686-9573

**Change Request**

To: George A. Garcia (Alcocer Garc

Number: 96

Date: 3/9/15

Job: 12-561 Remodel Administration Bldg

Phone:

Description: DA's changes RFP #041

Source: Other # RFP#041

We are pleased to offer the following specifications and pricing to make the following changes:

Changes to the DA's area on the 2nd floor per RFP #041 and the plans attached received on Thursday, 3.5.2015. Work includes Archritectural and MEP phases of work. Two weeks ( fourteen days) of extended time to the contract and extended General Conditions is a part of this proposal. New completion date of 21May2015. Thank you.

Description	Labor	Material	Equipment	Subcontract	Other	Price
Renovation				\$45,988.00		\$45,988.00
					Subtotal:	\$45,988.00
					Total:	\$45,988.00

The schedule will be impacted.

If you have any questions, please contact me at .

Submitted by: Manuel M. Ornelas, D. Wilson C

Approved by: \_\_\_\_\_

Date: \_\_\_\_\_

Cc: Ed Alcocer, AGADC, Horacio Quintero (D. Wilson Construction Co.), valde.guerra@co.hidalgo.tx.us, Stan Ramos (Hidalgo County), apalacios@prodigycompany.com

Renovation to HC Fmr Admin Bldg  
3.9.2015

RFP#041

DATE:  
Completion

Math Check

01-010	General Conditions ( Two weeks extended)	6,216	6,216	6,216
01-405	Building Permit/Demo Permit		-	-
	SWPP/Inspections		-	-
	Allowances:		-	-
	Contingency Allowance		-	-
	Graphics Allowance		-	-
	Irrigation/ Landscaping Allowance/		-	-
	HVAC Testing & Balance Allowance		-	-
	Rebar Allowance		-	-
	Struc. Steel Allowance		-	-
	Testing		-	-
	<b>SUBTOTAL</b>	<u>6,216</u>	<u>6,216</u>	

<b>02-000</b>	<b>SITework</b>			
02-050	Site & Interior Demo (Misc. Demo) (GC)	2,500		2,500
02-150	Sitework Contractor			-
02-150	Utilities			-
02-830	Chain Link Fencing			-
02-282	Termite Control			-
02-290	Landscapel/Irrigation Pavers/Mulch			-
	Striping			-
	Splashblocks			-
	<b>SUBTOTAL:</b>	<u>2,500</u>	<u>2,500</u>	

<b>03-000</b>	<b>CONCRETE</b>			
03-070	Concrete Material			-
02-289	Sidewalk Concrete Material			-
02-836	Wrought Iron Fencing			-
03-100	Concrete Sub w/materials			-

DATE: 3.9.2015  
Completion

Math Check

SUBTOTAL:

---

**06-000 CARPENTRY**

- 06-050 Rough Carpentry (GC)
- 06-420 Granite Counter Tops

SUBTOTAL:

---

**07-000 MOISTURE PROTECTION**

- 07-115 Shower Stall Water Proofing
- 07-160 Dampproofing Above Grade
- 07-210 Building Insulation
- 07-270 Firesopping and Fresaing
- 07-402 Prefinished Metal Roofng/Pavilion/Shed
- 07-525 Mod. Bit. Mem. Roofing
- 07-620 Gutters/ Downspouts
- 07-831 Roof Hatches and Heat/Smoke Vents
- 07-900 Building Sealants

SUBTOTAL:

---

**08-000 DOORS & WINDOWS**

- 08-100 Hollow Metal Door Frames & Wood Doors
- 08-213 Plastic Laminate Faced Doors
- 08-710 Finish Hardware
- 88-100 Frame/Door/Hdwr Labor
- 08-305 Access Doors (Access Control)
- 08-332 Overhead Rolling Doors
- 08-750 Glass & glazing
- 08-950 Insulated Translucent Skylights

SUBTOTAL:

7,475

3,640

685

1,735

1,415

7,475

Renovation to HC Fmr Admin Bldg.  
 DATE: 3.9.2015  
 Completion

Math Check

09-000 FINISHES			
09-100	Gypsum Wall Board Systems	3,170	3,170
09-200	Lath & Plaster		-
09-500	Acoustical Lay In Ceiling	768	768
09-310	Ceramic Tile	4,000	4,000
09-520	Acoustical Wall Panels, Fabrics, Diffusers		-
09-520	Acoustical Labor		-
09-670	Resinous Flooring		-
09-680	Carpet		-
09-685	VCT		-
09-629	Floor Protection Temporary	3,234	3,234
09-900	Painting/VWC		-
	SUBTOTAL:	11,172	11,172

**SPECIALTIES: LABOR INCLUDED ON EACH LINE ITEM**

10-100	TV Mount Brackets (50)		-
10-100	TV Mount Brackets Labor		-
10-100	Maunal Projection Screens (52 & 1 Oversized)		-
10-100	Maunal Projection Screens Labor		-
10-100	Motorized Projection Screens		-
10-100	Motorized Projection Screens Labor		-
10-100	Curtain and Curtain Track (3 @ A115)		-
10-100	Curtain and Curtain Track Labor		-
10-260	Corner Guards		-
10-260	Corner Guards Labor		-
10-100	Library Security System		-
10-100	Library Security System Labor		-
10-100	Ice Machine		-
10-100	Ice Machine labor		-

Renovation to HC Fmr Admin Bldg

3.9.2015

DATE: 3.9.2015  
Completion

Math Check

<b>12-000 Furnishings</b>			
12-300	Educational Casework (Millwork)	3,980	3,980
12-348	Laboratory Casework	-	-
12-504	Horizontal Blinds	-	-
	<b>SUBTOTAL</b>	<u>3,980</u>	<u>3,980</u>

<b>15-000 MEP</b>			
15-100	Plumbing Contractor	3,362	3,362
15-300	Fire Sprinkler System	800	800
15-300	FMI 200	-	-
15-500	HVAC Contractor	240	240
16-100	Electric Contractor/ Fire Alarm	5,899	5,899
	<b>SUBTOTAL</b>	<u>10,301</u>	<u>10,301</u>

	<b>PROJECT SUBTOTAL</b>	<u>41,644</u>	
	D. Wilson Construction Company fee	7.00%	2,915
			<u>44,559</u>
			2,915
			<u>44,559</u>

91-871	1	Builder's Risk Policy (Hughston quote)	0.009%	4	4	4
91-874		Liability insurance	0.620%	276	276	276
		<b>INSURANCE SUBTOTAL</b>		<u>280</u>		<u>280</u>

91-870		Bond		44,839	44,839	44,839
		<b>PROJECT SUBTOTAL</b>		<u>1,149</u>		<u>1,149</u>
					math is correct	
						44,839
						1,149

Renovation to HC Fmr Admin Bldg.  
DATE: 3.9.2015  
Completion

Math Check

PROJECT TOTAL:

45,988

45,988

math is correct

45,988

3.9.15  
RECEIVED



**Project: 390165 - 1ST AND 2ND FLOOR RENOVATIONS TO ADMINISTRATION BLG**  
**Contemplated Change Order # 13**  
**PR041**

		<b>Lobby 282 from Receptionist 282.1</b>		<b>RHR</b>
1	Single Door #D3			
1	3070 WD WH 1 3/4 PSWA 20MIN UNFIN 5 PLY MATCH/EDGE F PC RHR			
1	SGL 3070 4 C CRS 478 18 KD LH			
1	Lockset	T581PD D 50-210F-GMK 50-219F "DO NOT DUPLICATE"	626	FL
1	Door Closer	SC81 RW/PA Full Cover TBWMS	689	FL
1	Wall Stop	236W	US32D	HA
3	Hinges	EC1100 4 1/2 x 4 1/2	US26D	HA
		<b>Receptionist 282.1 from Hall 282.2</b>		<b>RHR</b>
1	Single Door #D6			
1	3070 WD WH 1 3/4 PSWA 20MIN UNFIN 5 PLY MATCH/EDGE F PC RHR			
1	SGL 3070 4 C CRS 478 18 KD LH			
1	Lockset	W511PD D 30-197 50-210F-GMK 50-219F "DO NOT DUPLICATE"	626	FL
1	Door Closer	SC81 RW/PA Full Cover TBWMS	689	FL
1	Wall Stop	236W	US32D	HA
3	Hinges	EC1100 4 1/2 x 4 1/2	US26D	HA
		<b>New Office 288 to Shower 286</b>		<b>RH</b>
1	Single Door #D11			
1	3070 WD WH 1 3/4 PSWA 20MIN UNFIN 5 PLY MATCH/EDGE F PC RH			
1	SGL 3070 4 C CRS 478 18 KD RH (TSTK)			
2	Deadlock	D271	626	FL
1	Privacy Set	W301S D	626	FL
1	Door Closer	SC81 RW/PA Full Cover TBWMS	689	FL
1	Wall Stop	236W	US32D	HA
3	Hinges	EC1100 4 1/2 x 4 1/2	US26D	HA

<b>Section Totals</b>	<b>685.00</b>
Finish Hardware	
Wood Doors	1,110.00
Lead Lined	550.00
<b>Pre-Tax Total</b>	<b>2,345.00</b>



AL3 ENTERPRISES, LLC.  
 DBA STARR TELECOM  
 304 W. Veterans Blvd.  
 Palmview, TX 78572

3.6.15  
 RECEIVED

# Estimate

Date	Estimate #
3/6/2015	4999

Name / Address	Ship To / Location
D WILSON CONT 1209 E. PECAN P.O. BOX 3455 MCALLEN, TEXAS 78502-3455	HC 2ND FLOOR REMODEL/ADDITION

			Project
Description	Qty	Cost	Total
INTELLI-M SINGLE MODULE ADD ON KIT	1	595.00	595.00
(6005BGB00) HID PROXIMITY READER CHARCOAL	1	135.00	135.00
Enforcer 12VDC Electric Door Strike for Metal Door	1	280.00	280.00
(SD-7202GC-PEQ) ENFORCER REQUEST TO EXIT BUTTON	1	65.00	65.00
22/4 ACCESS CONTROL READER CABLE	1	35.00	35.00
18/2 ACCESS CONTROL REX CABLE	1	30.00	30.00
CAT 5e DATA DROP (PLENUM)	1	195.00	195.00
LABOR RATE FOR INSTALLATION OF SYSTEMS PER TECHNICIAN		400.00	400.00
Sales Tax		8.25%	0.00

ANY QUESTIONS FEEL FREE TO CALL THE OFFICE AT(956)580-1333

**Total**

\$1,735.00

Phone #	Fax #	E-mail
956.580.1333	956.519.7859	ste@starrtelecom.com

Customer Signature \_\_\_\_\_



# Estimate

Date	Estimate #
3/6/2015	10632

G & S Glass, LLC  
 616 N. Closner Blvd.  
 Edinburg, TX 78541-3474

Name / Address
D. WILSON 1209 E. Pecan P O BOX 3455 McAllen, TX 78501 Phone: 686.9573 Fax: 686.3270, Texas

Description	Qty	Project	
		Rate	Total
12-561 Remodel Administration Bldg			
1 QTY-- 3-4 X 4-4 PASS THRU WINDOW SAME AS TYPE G 1/4 CLEAR TEMPERED		1,415.87	1,415.87
1 QTY-- 1" X 5" X 1" DARK BRONZE BREAK METAL INSTALLED IN MECHANICAL ROOM			
NOTE: ANY ELEVATION NOT MENTIONED IS CONSIDERED AN EXCLUSION AND IS SUBJECT TO A CHANGE ORDER. AREA MUST BE READY TO RECEIVE MATERIALS AS G&S DOES NOT PERFORM CARPENTRY AND/OR MASONRY WORK			
DS			
CONTACT: MANNY ORNELAS			
JOB LOCATION: HIDALGO COUNTY RENOVATIONS			
PR 041			
		<b>Subtotal</b>	\$1,415.87
		<b>Sales Tax (8.25%)</b>	\$0.00
		<b>Total</b>	\$1,415.87

2.16.15  
RECEIVED

ERICO  
BUILDING SYSTEMS, LLC  
3714 W. Mile 17 1/2  
Edinburg, Texas 78541

February 16, 2015

2<sup>ND</sup> FLOOR CHANGES

PROJECT: Hidalgo County Administration 1st & 2nd floor renovations (Edinburg, Texas)

Please find RFP 028.1 in the amount FOUR THOUSAND THREE HUNDRED NINETY EIGHT DOLLARS & NO/100 (\$4,398.00) for the changes for completion this project.

INCLUDED:

DEMOLITION:		\$460.00
- Remove existing ceiling grid:	\$160.00	
- Demolition of existing partitions	\$300.00	

DRYWALL:		\$3,170.00
- Metal Stud materials:	\$520.00	
- Sheetrock materials:	\$702.00	
- Sound Batt Insulation:	\$460.00	
- Metal Stud labor:	\$436.00	
- Sheetrock and Insulation labor:	\$523.00	

ACT:		\$768.00
- New ceiling grid materials:	\$590.00	
- Ceiling grid labor:	\$178.00	

*(Handwritten: \$4,398.00)*

ADDITIONAL PRICE IF SOUND BOARD IS NEEDED: (\$2,700.00)

- Sound Board Materials:	\$2,350.00	<i>N/A</i>
- Sound Board labor:	\$354.00	

Should you have any questions concerning this proposal, please feel free to give me a call @ 789-0794. Thank you.

Eric R. Garcia  
ERICO BUILDING SYSTEMS, LLC

*CONFIDENTIAL*  
*W/PROJ. 2/16/15*  
*10/15*

3.2.14  
RECEIVED

# Proposal

## MION TERRAZZO TILE AND MARBLE CO., INC.

2045 No. 77 Sunshine Strip  
HARLINGEN, TEXAS 78550  
Phone (956) 423-6207 • Fax: (956) 423-9591

PROPOSAL SUBMITTED TO <b>Wilson</b>		PHONE	DATE <b>March 03, 2015</b>
STREET		JOB NAME <b>Hidalgo County Admin 2nd Floor Changes</b>	
CITY, STATE AND ZIP CODE		JOB LOCATION <b>Edinburg, Texas</b>	
ARCHITECT	DATE OF PLANS	JOB PHONE	

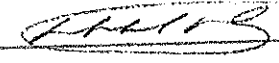
We Propose to Install New Ceramic Tile at Areas Idicated on Attached Files.  
Demo to be done by Contractor

For the sum of \$4,000.00 (Four Thousand Dollars)

Payment to be made as follows: \_\_\_\_\_ dollars (\$ \_\_\_\_\_).

Mion Terrazzo Tile & Marble, Co., Inc. Michael Mion , Vice-President

All material is guaranteed to be as specified. All work to be completed in a workmanlike manner according to standard practices. Any alteration or deviation from above specifications involving extra costs will be executed only upon written orders, and will become an extra charge over and above the estimate. All agreements contingent upon strikes, accidents or delays beyond our control. Owner to carry fire, tornado and other necessary insurance. Our workers are fully covered by Workmen's Compensation Insurance

Authorized Signature   
Note: This proposal may be withdrawn by us if not accepted within \_\_\_\_\_ days.

**Acceptance of Proposal** — The above prices, specifications and conditions are satisfactory and are hereby accepted. You are authorized to do the work as specified. Payment will be made as outlined above.  
Date of Acceptance: \_\_\_\_\_

Signature \_\_\_\_\_  
Signature \_\_\_\_\_







3.4.2015  
RECEIVED

# M & A Painting Service, Inc.

Miguel Barboza Jr.

3711 E. Main Ave.  
Alton, TX 78573

Phone:(956)585-6167  
Fax: (956)583-3999

Email:mapaintingservice@att.net

**BASE BID: \$3,234.00**

AS PER PLANS & SPECS

**PROJECT:**

**HIDALGO COUNTY OFFICES**

**THIS BASE BID INCLUDES:**

INTERIOR GYBD WALLS-TAPE, FLOAT, TEXTURE AND PAINT

**ACKNOWLEDGE OF ADDENDUMS:**

**PLEASE CALL MIKE IF YOU HAVE ANY QUESTIONS @ 956-605-5043**

X \_\_\_\_\_ DATE 3/4/2015

MIGUEL BARBOZA JR

M & A REPRESENTATIVE

THIS BID IS GOOD FOR 30 DAYS FROM ABOVE DATE

3.5.15  
RECEIVED

# **RPM** Manufacturing, LLC

Millwork and Casework  
HUB Certified

March 5, 2015

D. Wilson Construction Inc.  
1209 East Pecan  
McAllen, Texas 78502-3455

Re: Hidalgo County 2nd Floor  
RFP #041

Manuel Ornelas, P.M.

Enclosed is the cost to removed and relocate existing millwork and add additional millwork.

- A. Break room 286
  - 1. Removal of existing millwork
  - 2. Install existing millwork in Conference Room 289
  - 3. Provide new counter top
  
- B. Receptionist 282.1
  - 1. Add new base cabinets with one file drawer
  - 2. Add window sill with plastic laminate
  - 3. Add new plastic laminate counter
  
- C. Conference Room 289 & Office 284
  - 1. Provide and install two wardrobe units 24X62X76
  - 2. With shelf and rod

The sum of \$ **3,980.00**

Let me know if you have any questions.

Respectfully,

Jose E. Paredes

1100 J&B Dr.  
San Benito, Texas 78586

Ph: 956-361-5200  
Fax: 956-361-5204



Faires Plumbing Co., Inc.

P. O. Box 1199

Edinburg, Texas 78540

Ph. 956-383-3221

Fax 956-383-7382



3.4.15  
RECEIVED

REVISED

March 4, 2015

D. Wilson Construction

Re: Hidalgo County Renovation to Administration – Shower addition

Attn.: Manny Ornelas

Dear Sir,

As per your request we submit a proposed price of **\$3,362.00** for the shower rough in that you requested. This price includes the necessary drain and water supply piping, instantaneous water heater, and insulation. This price includes placing a new instantaneous water heater above the shower. As per our discussion this price does not provide the shower fixtures, faucets, or shower pan / liner or concrete saw cutting. Please advise.

Sincerely,

*Mike Fuentes*  
Mike Fuentes



**Alliance Specialized Systems**  
Fire Sprinkler Contractor  
Texas SCR-0798  
HUB Certified  
E-Mail: [ederueda@alliance-fire.com](mailto:ederueda@alliance-fire.com)

602 North McColl Road  
McAllen, Texas 78501  
(956) 682-1602  
(956) 682-1605  
March 9, 2015

3,9,15  
RECEIVED

Attn: Manuel Ornelas  
**Wilson Construction**  
1209 East Pecan  
McAllen, Texas 78501  
P. (956) 686-9573  
F. (956) 686-3270

RE: Hidalgo Admin. 2<sup>nd</sup> floor CO  
Our Ref. #: ED39

Alliance Specialized Systems is pleased to provide our quotation of Eight Hundred Dollars (\$800.00) to provide material and labor to relocate and add the fire protection sprinkler heads as per changes.

Exclusions:  
1. NA

THIS AGREEMENT CONSISTS OF THESE AGREEMENT PAGE AND THE TERMS AND CONDITIONS ATTACHED HERETO, and is the complete agreement between the parties. Customer acknowledges that he has read this agreement, understands it, and agrees to be bound by its terms and conditions. Neither party shall be bound by any statements or representations not contained in this agreement.

Respectfully submitted,

Ed De Rueda  
Operations Manager  
**Alliance Specialized Systems**



MECHANICAL STAR SYSTEMS, INC.  
P.O. BOX 1694  
PHARR, TEXAS 78577  
(956) 502-5108 PH. (956) 502-5107 Fx.

3.6.15  
RECEIVED

March 6, 2015

D. Wilson Construction Co.  
1209 East Pecan  
McAllen, Texas 78501

Re: Hidalgo County Reno to Admin Bldg

Re: 2<sup>nd</sup> Floor Remodel HVAC  
(REVISED)

Attn: Manuel Ornelas  
Project Manager

Dear Manuel,  
Here is our price for the revised drawings for the second floor HVAC work. Our price will  
the new duct, grille and the labor to install.

- 1) Duct and insulation
- 2) Grille
- 3) Labor

Total \$240.00

Should you have any questions, do not hesitate to contact me, thanks.

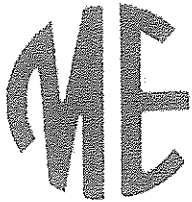
Sincerely,  
Mechanical Star Systems, Inc.

Cesar Zepeda  
Project Manager – Senior Estimator

2.16.15  
RECEIVED

# METRO ELECTRIC, INC.

TECL# 17140



MAIN OFFICE  
1901 INDUSTRIAL DRIVE  
McALLEN, TX 78504-4015  
(956) 686-2323

BRANCH OFFICE  
5255 COMMERCIAL DRIVE  
PO. BOX 4270  
BROWNSVILLE, TX 78523  
(956) 831-7801

HARLINGEN, TX 78550  
(956) 421-2600

WWW.METROELECTRIC-ROV.COM

February 16, 2015

D. Wilson Construction, Inc  
1209 E Pecan Blvd.  
McAllen, TX 78501

Attn: Manuel Ornalas  
Re: Metro Electric, Inc.  
Hidalgo Administration Building Renovations - CPR #24

Please add \$4,149.00 to our base contract amount for the following changes.

+ \$1,750.00 ADDITIONAL FIXTURES PER STEWART 3.9.15.  
\$5,899.00 SCOPE OF WORK

TOTAL  
REVISED  
QUOTE

Rework of offices second floor. The scope of work includes demo of twenty seven devices previously installed, reinstall switches, receptacles, and data as needed (20 locations), rework of lighting, and one additional light fixture Type A. Tapping of existing circuit for electrified lock is included.

Should you have any questions, please advise accordingly.

Sincerely,  
Metro Electric, Inc.

Stewart P. Gregorie  
Sr. Project Manager

cc: File

COMMERCIAL • INDUSTRIAL

Regulated by The Texas Department of Licensing and Regulation, P.O. Box 12157, Austin, Texas 78711,  
1-800-803-9202, 512-463-6599; website: [www.license.state.tx.us/complaints](http://www.license.state.tx.us/complaints)

**Eduardo Alcocer**

---

**From:** Manuel Ornelas <manuelo@dwilsonconstruction.com>  
**Sent:** Friday, March 13, 2015 11:04 AM  
**To:** ED  
**Cc:** george@agadc.com  
**Subject:** HC Admin DA's Shower.

Ed, Per your request the quote , as you know, from Faires for the WH installation is \$6,293.00 with our mark -up we are looking at \$6,950.00 an additional \$657.00 dollars. Please note I touched base with Faires this morning to see if their price could be adjusted and their response was negative as the cost " is what it is".

Thanks,

Manuel M. Ornelas  
Project Manager  
D. Wilson Construction  
Mobile: 956-336-8577

(

(

Alcócer García Associates, Inc.

AGA

March 10, 2015

**REQUEST FOR PROPOSAL  
043  
REVISE CC BENCH SEATING  
FROM FIVE TO SIX**

**FOR PRICING PURPOSES ONLY:**

Mr. Ornelas;

Provide pricing for modifying seating spacing at Commissioners Court bench from five to seven spaces with County Judges area centered on bench.

Alcocer Garcia Associates, Inc.

*Eduardo Alcocer*

Eduardo Alcocer

D. Wilson Construction Company

P.O. Box 3455  
McAllen, TX 78502-3455  
Ph : (956) 686-9573

**Change Request**

To: George A. Garcia (Alcocer Garc

Number: 97A

Date: 3/25/15

Job: 12-561 Remodel Administration Bldg

Phone:

Description: Change in seating arrangements @ CC's table @ Meeting Room per RFP#043.

Source: Other # RFP#043

We are pleased to offer the following specifications and pricing to make the following changes:

Per RFP #043 received from AGA on 3.24.15; cost of work to undo and re-work the CC's table at the Meeting Room to accommodate seven personnel in lieu of the five per the original plans. This CR#97A supercedes previous CR #97 submitted on 3.12.15. Thank you.

Description	Labor	Material	Equipment	Subcontract	Other	Price
Architectural woodwork				\$845.00		\$845.00
					Subtotal:	\$845.00
					Total:	\$845.00

The schedule will be impacted.  
If you have any questions, please contact me at .

Submitted by: Manuel M. Ornelas, D. Wilson C

Approved by: \_\_\_\_\_  
Date: \_\_\_\_\_

Cc: Ed Alcocer, AGADC, Horacio Quintero (D. Wilson Construction Co.), Mateo Salazar (D. Wilson Cons, Stan Ramos (Hidalgo County), valde.guerra@co.hidalgo.tx.us

Renovation to HC Emr Admin Bldg.

Verbal RFP (Revised) RFP #043

DATE:  
Completion

3.25.15

3.25.15

Math Check

09-000 FINISHES			
09-100	Gypsum Wall Board Systems	-	-
09-200	Lath & Plaster	-	-
09-500	Acoustical Lay In Ceiling	-	-
09-310	Ceramic Tile	-	-
09-520	Acoustical Wall Panels, Fabrics, Diffusers	-	-
09-520	Acoustical Labor	-	-
09-670	Resinous Flooring	-	-
09-680	Carpet	-	-
09-685	VCT	-	-
09-629	Floor Protection Temporary	100	100
09-900	Painting/VWC		

DATE: 3.25.15  
Completion

Renovation to HC Fmr Admin Bldg.

Verbal RFP (Revised) RFP #043  
3.25.15

Math Check

12-000	Furnishings	665	665
12-300	Educational Casework (Millwork)		
12-348	Laboratory Casework		
12-504	Horizontal Blinds		

SUBTOTAL

PROJECT SUBTOTAL

D. Wilson Construction Company fee

91-871	1	Builder's Risk Policy (Hughston quote)	0.009%	0	0
91-874		Liability insurance	0.620%	5	5

INSURANCE SUBTOTAL

PROJECT SUBTOTAL

91-870 Bond

PROJECT TOTAL:

				845	845	math is correct
				824	824	math is correct
				21	21	
				5	5	
				54	54	
				819	819	
				765	765	

3.12.15  
RECEIVED

# M & A Painting Service, Inc.

Miguel Barboza Jr.

3711 E. Main Ave.  
Alton, TX 78573

Phone:(956)585-6167  
Fax: (956)583-3999

Email:mapaintingservice@att.net

**BASE BID: \$100.00**

AS PER PLANS & SPECS

**PROJECT:**

**HIDALGO COUNTY ADMINISTRATION**

**THIS BASE BID INCLUDES:**

TO STAIN TABLE IN THE MEETING ROOM

**ACKNOWLEDGE OF ADDENDUMS:**

**PLEASE CALL MIKE IF YOU HAVE ANY QUESTIONS @ 956-605-5043**

X MIGUEL BARBOZA JR DATE 3/12/2015  
M & A REPRESENTATIVE

THIS BID IS GOOD  
FOR 30 DAYS FROM  
ABOVE DATE

3.12.15  
RECEIVED

**RPM** Manufacturing, LLC  
Millwork and Casework  
HUB Certified

March 12, 2015

D. Wilson Construction Inc.  
1209 East Pecan  
McAllen, Texas 78502-3455

Re: Hidalgo County 1<sup>st</sup> & 2<sup>nd</sup> Floor  
Remodel C.C. Table Modifications

Manuel Ornelas, P.M.

Enclosed is the cost to install One more Ash counter support and relocate exiting to make room for one more space on the Commissioners table.

The sum of \$ 375.00

Not included: Painting or staining.  
Let me know if you have any questions.

Respectfully,

Jose E. Paredes

1100 J&B Dr.  
San Benito, Texas 78586

Ph: 956-361-5200  
Fax: 956-361-5204

3,25,15  
RECEIVED

# **RPM** Manufacturing, LLC

Millwork and Casework  
HUB Certified

March 25, 2015

D. Wilson Construction Inc.  
1209 East Pecan  
McAllen, Texas 78502-3455

Re: Hidalgo County 1<sup>st</sup> & 2<sup>nd</sup> Floor  
Remodel C.C. Table Modify to fit Seven

Manuel Ornelas, P.M.

Enclosed is the cost to install One more Ash counter support and modify access panels to make room for seven spaces on the Commissioners table.

The sum of \$ **290.00**

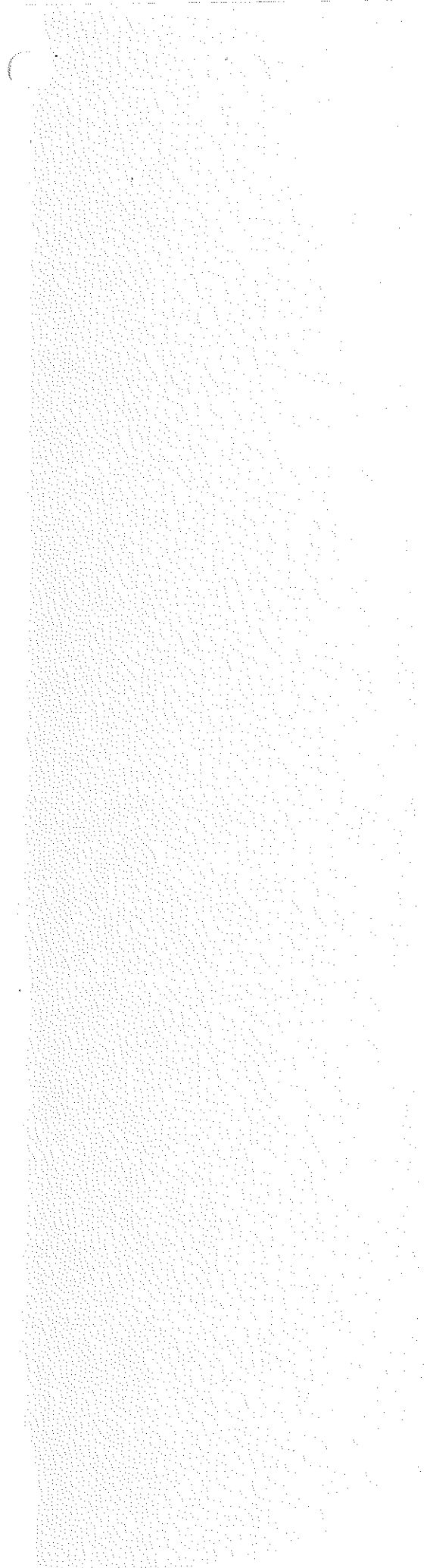
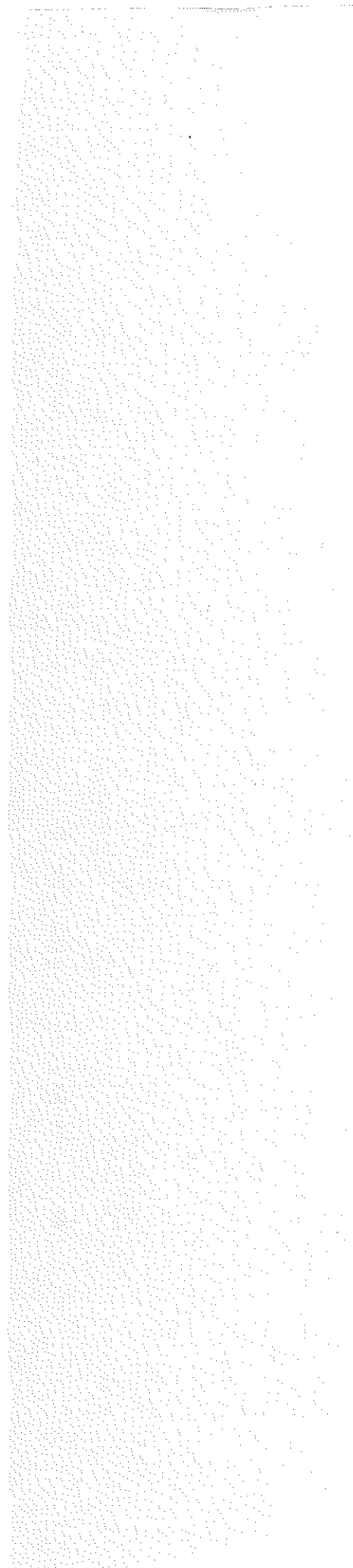
Not included: Painting or staining.  
Let me know if you have any questions.

Respectfully,

Jose E. Paredes

1100 J&B Dr.  
San Benito, Texas 78586

Ph: 956-361-5200  
Fax: 956-361-5204



March 18, 2015

**REQUEST FOR PROPOSAL  
042  
ELECTRICAL SERVICE  
SOUTH TOWER HEAT PUMPS**

FOR PRICING PURPOSES ONLY:

Mr. Ornelas;

Provide pricing for electrical service to AC Equipment as shown on attached drawing.

Provide pricing at your earliest opportunity.

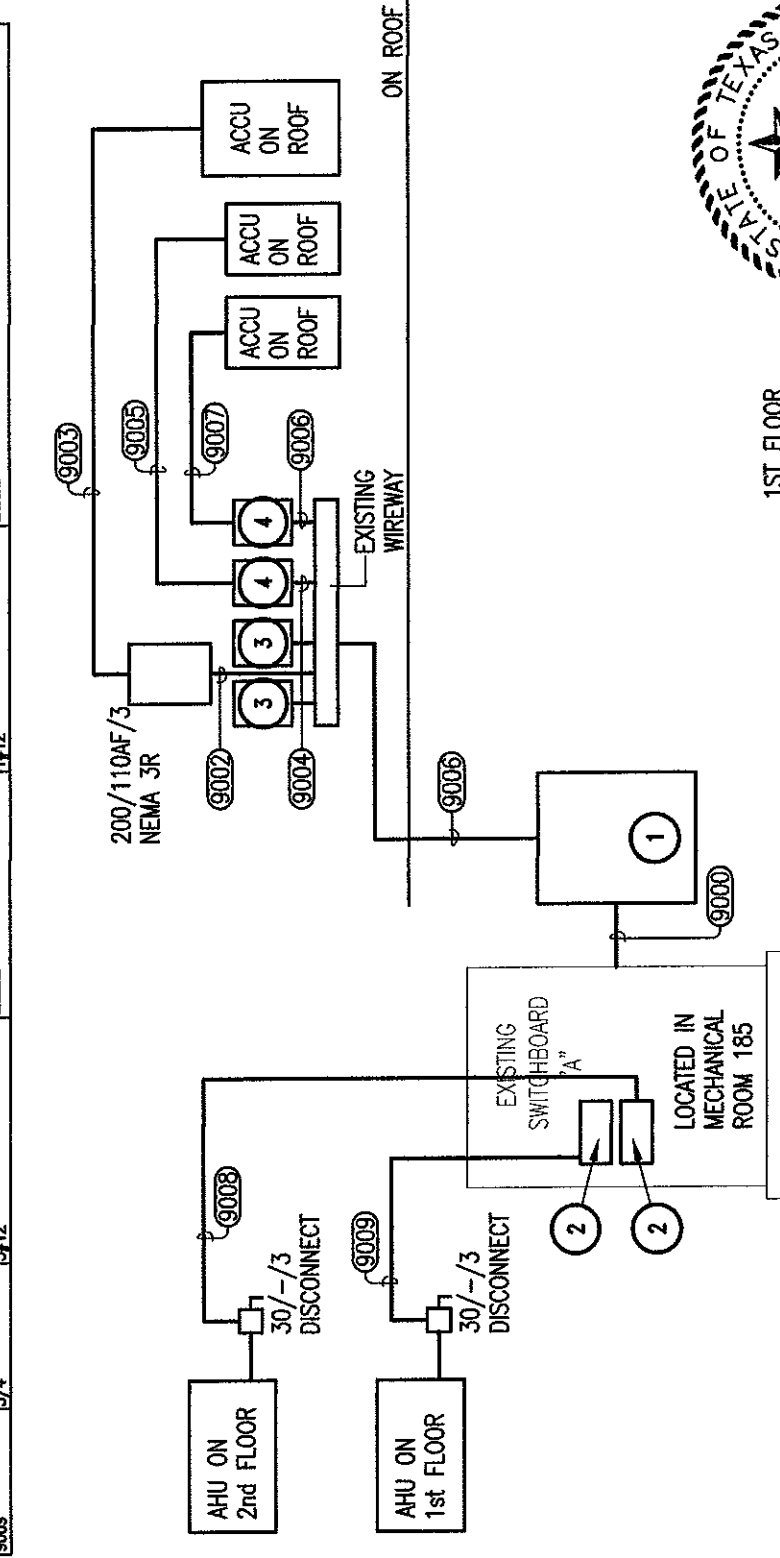
Alcocer Garcia Associates, Inc.

*Eduardo Alcocer*

Eduardo Alcocer

# FEEDER / BRANCH CIRCUIT SCHEDULE

Item	Size	Material	Notes
9000	3"	3/4"Ø	EXISTING FEEDER
9001	3"	3/4"Ø	
9002	1 1/2"	3/2	
9003	1 1/2"	3/2	
9004	3/4"	3/6	
9005	3/4"	3/6	
9006	3/4"	3/6	
9007	3/4"	3/6	
9008	3/4"	3/12	
9009	3/4"	3/12	



- 1 ELECTRICAL CONTRACTOR SHALL ADJUST TRIP SETTING TO 230Amps AT EXISTING 350amp CIRCUIT BREAKER.
- 2 FURNISH AND INSTALL 20amp FUSES AT EXISTING FUSED SWITCH.
- 3 EXISTING DISCONNECTS TO BE REMOVED.
- 4 FURNISH AND INSTALL 60amp FUSES AT EXISTING FUSED DISCONNECT.



*Abram L. Dominguez*  
 03.16.2015

**MFP SOLUTIONS ENGINEERING**

MECHANICAL, ELECTRICAL, PLUMBING ENGINEERS  
 600 E. BEAUMONT AVE. SUITE 2 McALLEN, TX 78501 (956) 664-2727  
 TEXAS BOARD OF PROFESSIONAL ENGINEERS REGISTRATION # F-9748

1st AND 2nd FLOORS  
 REMODEL FORMER  
 ADMINISTRATION BUILDING  
 HIDALGO COUNTY TEXAS  
 CITY OF ENDURGA, TEXAS

SHEET

E-8

JOB NO. 08072  
 DATE 08-01-12  
 REVISIONS 03-16-15  
 DRAWN BY AD/LA

D. Wilson Construction Compar

P.O. Box 3455  
McAllen, TX 78502-3455  
Ph : (956) 686-9573

**Change Request**

To: George A. Garcia (Alcocer Garc

Number: 99

Date: 3/20/15

Job: 12-561 Remodel Administration Bldg

Phone:

Description: Additional Electrical Work per RFP#042.

Source: Other # RFP#042

We are pleased to offer the following specifications and pricing to make the following changes:

Additional electrical work per RFP #042 and MEP's electrical sketch received on 3.19.15. Request an immediate response on this and other outstanding proposals. Thank you.

Description	Labor	Material	Equipment	Subcontract	Other	Price
Electrical contractor				\$12,742.00		\$12,742.00
					Subtotal:	\$12,742.00
					Total:	\$12,742.00

The schedule will be impacted..

If you have any questions, please contact me at .

Submitted by: Manuel M. Ornelas, D. Wilson C

Approved by: \_\_\_\_\_

Date: \_\_\_\_\_

Cc: Ed Alcocer, AGADC, Stan Ramos (Hidalgo County), valde.guerra@co.hidalgo.tx.us, apalacios@prodigycompany.com

Renovation to HC Fmr Admin Bldg.

DATE: 3.20.15

Completion

15-000 MEP

15-100	Plumbing Contractor		
15-300	Fire Sprinkler System		
15-300	FM 200		
15-500	HVAC Contractor		
16-100	Electric Contractor/ Fire Alarm	11,538	

SUBTOTAL

11,538

11,538

PROJECT SUBTOTAL

11,538

D. Wilson Construction Company fee

7.00%

808

12,346

91-871 1 Builder's Risk Policy (Hughtston quote)

0.009%

1

91-874 Liability insurance

0.620%

77

INSURANCE SUBTOTAL

78

78

PROJECT SUBTOTAL

12,424

math is correct

91-870 Bond

318

318

PROJECT TOTAL:

12,742

12,742

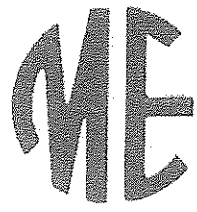
math is correct

3.20.15  
RECEIVED



# METRO

ELECTRIC, INC.  
TECL# 17140



MAIN OFFICE  
1901 INDUSTRIAL DRIVE  
McALLEN, TX 78504-4015  
(956) 886-2323

BRANCH OFFICE  
5255 COMMERCIAL DRIVE  
P.O. BOX 4270  
BROWNSVILLE, TX 78523  
(956) 831-7801

HARLINGEN, TX 78550  
(956) 421-2600

WWW.METROELECTRIC-RGV.COM

March 20, 2015

D. Wilson Construction, Inc  
1209 E Pecan Blvd.  
McAllen, TX 78501

Attn: Manuel Ornalas  
Re: Metro Electric, Inc. Project #3035  
Hidalgo Administration Building Renovations  
RFP #042 Metro CPR #26

For the above referenced scope of work we find the additional cost amounts to the sum of:

Eleven Thousand Five Hundred Thirty Eight Dollars (\$11,538.00)

Included in this scope is:

- Install J Box in first floor mechanical room and conduit to existing 350 amp breaker.
- Wire to existing roof top gutter.
- Remove two disconnects and install one new 200 amp N3R disconnect.
- Tap conductors and wire to disconnects.
- Conduit and wire to two heat pumps, and one condensing unit.
- Conduit, wire and disconnects for AHU located on first and second floors.
- Recalibrate breaker down to 230 amp setting.
- Check and test five mechanical units.

We request one additional week be added to the project schedule.

Should you have any questions, please advise accordingly.

Sincerely,  
Metro Electric, Inc.

Stewart P. Gregorie  
Sr. Project Manager

cc: File CPR 26-3035

COMMERCIAL • INDUSTRIAL

Regulated by The Texas Department of Licensing and Regulation, P.O. Box 12157, Austin, Texas 78711,  
1-800-803-9202, 512-463-6599; website: [www.license.state.tx.us/complaints](http://www.license.state.tx.us/complaints)

**Change Price Request Cost Analysis**

PROJECT: Hidalgo Administration Building Renovation Project  
 CONTRACTOR: D. Wilson Construction Company

DESCRIPTION OF CHANGE: RFP 042 Service for AHU's, Heat Pumps, and Condenser

*Metro Electric, Inc. CPR #26*

Description	Quan. Req'd.	Material Cost	Unit	Material Total	Labor Total
2 1/2" GRC Threadless Connector	1.00	\$ 6,531.50	C	\$ 65.32	\$ 36.18
18" x 18" x 6" N1 J Box	1.00	\$ 276.88	E	\$ 276.88	\$ 164.45
2 1/2" Steel S.S. Insul. Connector	2.00	\$ 638.06	C	\$ 12.76	\$ 29.60
2 1/2" EMT Factory 90	1.00	\$ 29.83	E	\$ 29.83	\$ 24.67
2 1/2" Steel S.S. Coupling	2.00	\$ 1,374.89	C	\$ 27.50	\$ 11.84
2 1/2" EMT	10.00	\$ 807.58	C	\$ 80.76	\$ 46.70
4/0 THHN Cu	240.00	\$ 7,734.60	M	\$ 1,856.30	\$ 343.37
#2 THHN Cu	80.00	\$ 2,599.13	M	\$ 207.93	\$ 67.10
3 Port 4/0 Polaris Lug	3.00	\$ 37.63	E	\$ 112.89	\$ 98.67
#2 Ground Lugs	3.00	\$ 5.78	E	\$ 17.34	\$ 24.67
6 Space Ground Bar #8	1.00	\$ 13.92	E	\$ 13.92	\$ 19.73
3/4" EMT	120.00	\$ 140.48	C	\$ 168.58	\$ 296.01
3/4" WP Compression Connector	4.00	\$ 674.29	C	\$ 26.97	\$ 46.05
3/4" WP Compression Coupling	4.00	\$ 703.17	C	\$ 28.13	\$ 27.63
3/4" Steel S.S. Insul. Connector	8.00	\$ 91.09	C	\$ 7.29	\$ 39.47
3/4" Steel S.S. Coupling	7.00	\$ 84.06	C	\$ 5.88	\$ 16.12
3/4" GRC Coupling	4.00	\$ 1.08	E	\$ 4.32	\$ 19.73
3/4" Liquitight	11.00	\$ 216.00	C	\$ 23.76	\$ 27.13
3/4" Liquitight Connector	8.00	\$ 673.34	C	\$ 53.87	\$ 71.04
#6 THHN	420.00	\$ 1,072.31	M	\$ 450.37	\$ 227.93
#8 THHN	140.00	\$ 627.28	M	\$ 87.82	\$ 62.16
1 1/2" EMT	40.00	\$ 459.62	C	\$ 183.85	\$ 138.14
1 1/2" WP Compression Connector	4.00	\$ 3,426.63	C	\$ 137.07	\$ 88.15
1 1/2" WP Compression Coupling	3.00	\$ 2,869.89	C	\$ 86.10	\$ 36.51
1 1/2" GRC Coupling	1.00	\$ 3.60	E	\$ 3.60	\$ 6.58
1 1/2" Liquitight	2.00	\$ 671.00	C	\$ 13.42	\$ 14.80
Subtotals				\$ 3,982.44	\$ 1,984.42
Sales Tax				\$ -	
Subtotal w/ Tax				\$ 3,982.44	

Bond \$ -  
 Subtotal (Material and Labor) \$ -  
 Plus 0.00 % of (Material and Labor) \$ -  
 Subtotal (Material, Labor and Overhead) \$ -  
 Plus 0.00 % of (Material, Labor, and Overhead) \$ -  
 Total (Material, Labor, Overhead, and Profit) \$ -

**Change Price Request Cost Analysis**

PROJECT: Hidalgo Administration Building Renovation Project  
 CONTRACTOR: D. Wilson Construction Company

DESCRIPTION OF CHANGE: RFP 042 Service for AHU's, Heat Pumps, and Condenser

*Metro Electric, Inc. CPR #26 Page 2*

Description	Quan. Req'd.	Material Cost	Unit	Material Total	Labor Total
1½" Lighthead Connector	2.00	\$ 3,105.11	C	\$ 62.10	\$ 35.52
#2 THHN Cu	150.00	\$ 2,599.13	M	\$ 389.87	\$ 125.80
#8 THHN Cu	50.00	\$ 627.28	M	\$ 31.36	\$ 22.20
1 1/16 Unistrut	10.00	\$ 561.29	C	\$ 56.13	\$ 59.20
½" Beam Clamp	8.00	\$ 613.50	C	\$ 49.08	\$ 118.40
½" Round Head Machine Screw	8.00	\$ 6.52	C	\$ 0.52	\$ 11.31
½" Fender Washer	8.00	\$ 7.34	C	\$ 0.59	\$ 2.87
¼" Unistrut Strap	6.00	\$ 203.35	C	\$ 12.20	\$ 8.88
1½" Unistrut Strap	4.00	\$ 326.93	C	\$ 13.08	\$ 7.89
200 A 600 V N3R Fused Disconnect	1.00	\$ 269.06	E	\$ 269.06	\$ 198.98
100 A Type RK5 600 V Fuse	3.00	\$ 73.16	E	\$ 219.48	\$ 14.80
30A 600 V N1 Non-Fused Disconnect	2.00	\$ 154.44	E	\$ 308.88	\$ 217.07
20 A 600 V Type RK5 Fuse	6.00	\$ 16.72	E	\$ 100.32	
60 A 600 V Type RK5 Fuse	6.00	\$ 27.33	E	\$ 163.98	\$ 29.60
Motor Termination up to 5 HP	5.00			\$ -	\$ 254.90
78B Wirenut	3.00	\$ 18.98	C	\$ 0.57	\$ 7.89
76B Wirenut	12.00	\$ 9.98	C	\$ 1.20	\$ 31.57
Remove Existing Disconnects	2.00			\$ -	\$ 49.34
#12 THHN Cu	330.00	\$ 251.46	M	\$ 82.98	\$ 97.68
Adjust Trip Settings	1.00			\$ -	\$ 16.45
Check Voltage and Rotation	5.00			\$ -	\$ 82.23
Page 1 Totals	1.00	\$ 3,982.44		\$ 3,982.44	\$ 1,984.42
				\$ -	\$ -
				\$ -	\$ -
				\$ -	\$ -
				\$ -	\$ -

Subtotals	\$ 5,743.84	\$ 3,377.02
Sales Tax	\$ -	
Subtotal w/ Tax	\$ 5,743.84	

Bond	\$ -
Subtotal (Material and Labor)	\$ 9,120.86
Plus 15.00 % of (Material and Labor)	\$ 1,368.13
Subtotal (Material, Labor and Overhead)	\$ 10,488.99
Plus 10.00 % of (Material, Labor, and Overhead)	\$ 1,048.90
Total (Material, Labor, Overhead, and Profit)	\$ 11,537.89