

Hidalgo County Head Start Program

Policy Council Consent Agenda

DATE: May 20, 2015

SUBJECT: Approval of the Learning Accomplishment Profile Diagnostic (LAP-D) Report - Post Assessment

RATIONALE/NEED: The Learning Accomplishment Profile Diagnostic (LAP-D) is administered three (3) times during the school year. These are the post assessment results.

RECOMMENDATION: Administration recommends approval.

COST: N/A

RELATED INFORMATION INCLUDES: LAP-D Post Report

INITIATED BY: Nora S. Munoz, Assistant Program Director 

REVIEWED BY: Teresa Flores, Executive Director

EXECUTIVE DIRECTOR'S APPROVAL: 

Head Start Outcomes Report for Hidalgo County Head Start

Based on Results From the LAP-D Assessment

Includes assessments for school year 2014 - 2015

Pre.

Mid

Post

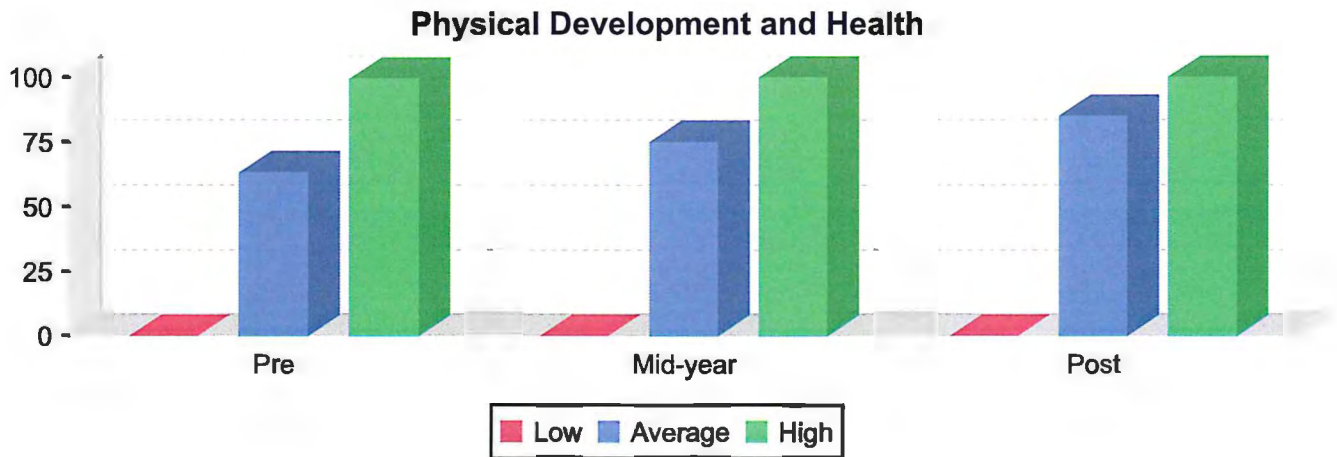


The following table summarizes the progress of children enrolled in Hidalgo County Head Start based on the Head Start Child Development and Early Learning Framework for the selected checkpoints. Each score represents the average number of milestones achieved expressed as a percentage of the total number of milestones correlated to each domain. Gains and/or losses are based on the difference between the average percentage scores at each checkpoint. Information on how the LAP-D is correlated to the Head Start Child Development and Early Learning Framework may be found in the documents section of the application.

Program Name: Hidalgo County Head Start

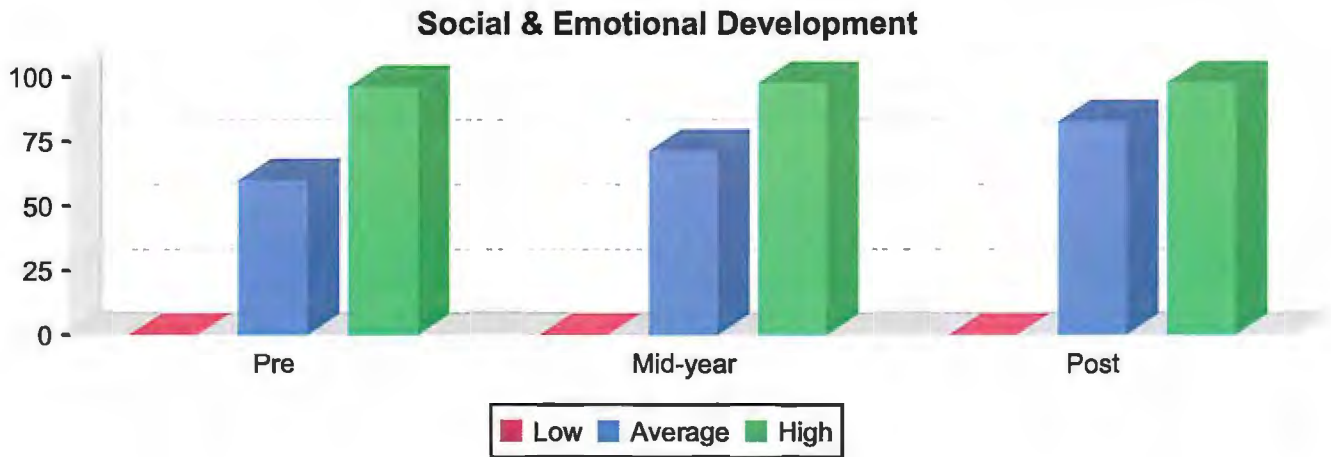
Domain	Checkpoint			Change		
	Pre	Mid-year	Post	Pre/Mid	Mid/Post	Pre/Post
Physical Health & Development	63.24	75.01	84.88	11.77	9.86	21.63
Social & Emotional Development	59.90	71.18	82.37	11.28	11.19	22.46
Approaches to Learning	53.48	66.05	76.55	12.57	10.50	23.07
Logic & Reasoning	52.41	67.64	79.54	15.23	11.90	27.13
Language Development	45.53	57.54	68.62	12.01	11.09	23.10
Literacy Knowledge & Skills	37.71	50.71	64.35	13.00	13.64	26.64
Mathematics Knowledge & Skills	42.94	56.55	68.88	13.60	12.33	25.94
Science Knowledge & Skills	32.41	46.70	61.85	14.29	15.15	29.44
Creative Arts Expression	29.43	44.54	61.28	15.11	16.75	31.85
Social Studies Knowledge & Skills	37.45	50.64	63.50	13.19	12.86	26.06
English Language Development	27.94	40.39	51.65	12.45	11.26	23.71

The following graph reflects the range of scores for children enrolled in Hidalgo County Head Start based on the Head Start Child Development and Early Learning Framework. Graphs and the numbers represented by the graphs are based on highest score, lowest score and average score for all children in the program with assessment results during that checkpoint.



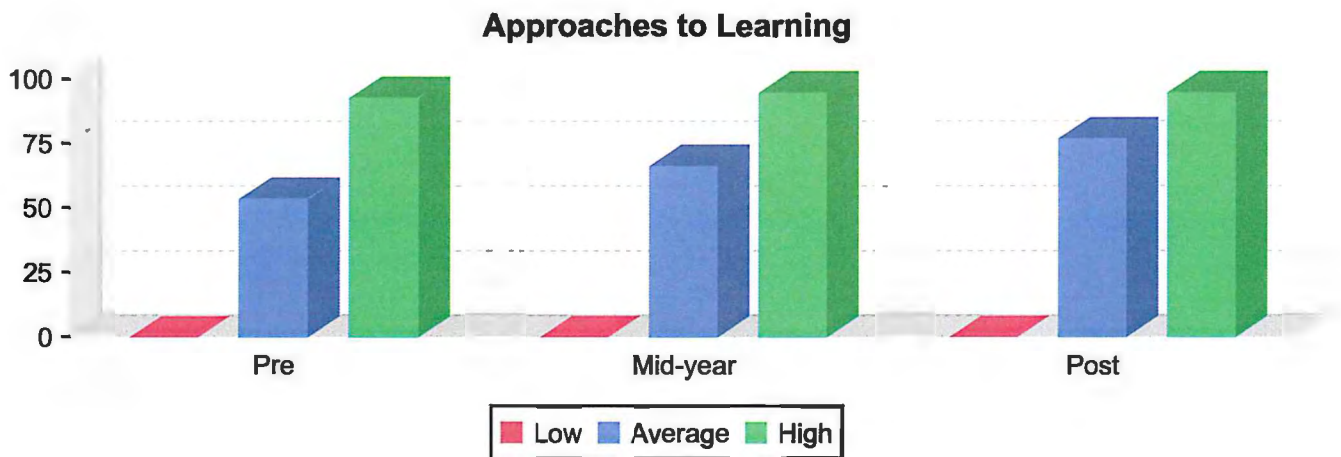
	<u>Pre</u>		<u>Mid-year</u>		<u>Post</u>
High Percentage	99.45		100.00		100.00
Average Percentage	63.24		75.01		84.88
Low Percentage	0.00		0.00		0.00
Average Percentage Gain <Loss>			11.77		9.86
Total Children in Program:	3,959	Total No. Sites:	43	Total No. Classrooms:	197
Children with Assessment data	3,955		3,632		3,615

The following graph reflects the range of scores for children enrolled in Hidalgo County Head Start based on the Head Start Child Development and Early Learning Framework. Graphs and the numbers represented by the graphs are based on highest score, lowest score and average score for all children in the program with assessment results during that checkpoint.



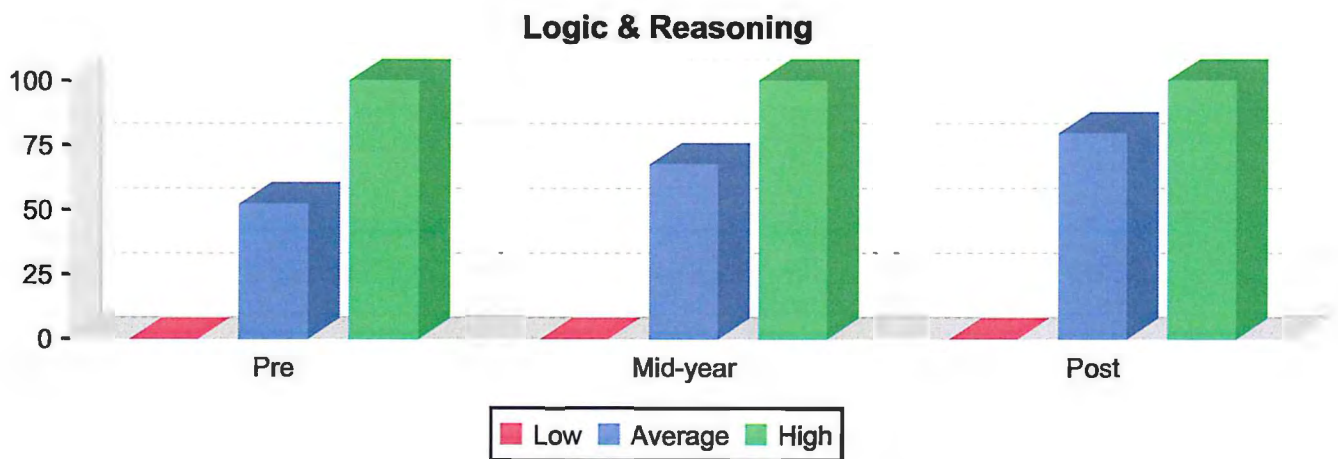
	<u>Pre</u>		<u>Mid-year</u>		<u>Post</u>
High Percentage	96.10		97.40		97.40
Average Percentage	59.90		71.18		82.37
Low Percentage	0.00		0.00		0.00
Average Percentage Gain <Loss>			11.28		11.19
Total Children in Program:	3,959	Total No. Sites:	43	Total No. Classrooms:	197
Children with Assessment data	3,955		3,632		3,615

The following graph reflects the range of scores for children enrolled in Hidalgo County Head Start based on the Head Start Child Development and Early Learning Framework. Graphs and the numbers represented by the graphs are based on highest score, lowest score and average score for all children in the program with assessment results during that checkpoint.



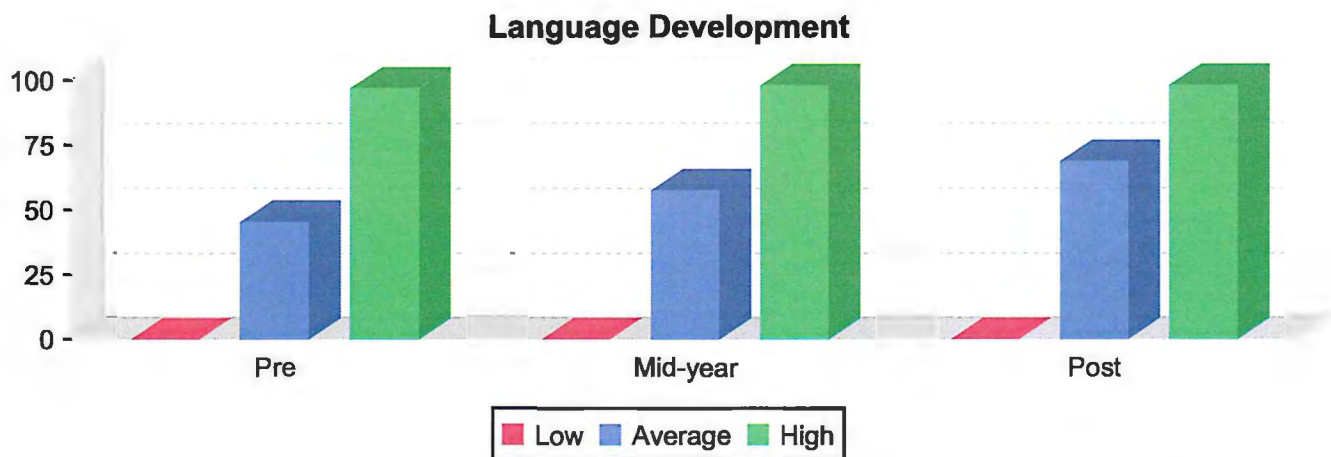
	<u>Pre</u>		<u>Mid-year</u>		<u>Post</u>
High Percentage	92.45		94.34		94.34
Average Percentage	53.48		66.05		76.55
Low Percentage	0.00		0.00		0.00
Average Percentage Gain <Loss>			12.57		10.50
Total Children in Program:	3,959	Total No. Sites:	43	Total No. Classrooms:	197
Children with Assessment data	3,955		3,632		3,615

The following graph reflects the range of scores for children enrolled in Hidalgo County Head Start based on the Head Start Child Development and Early Learning Framework. Graphs and the numbers represented by the graphs are based on highest score, lowest score and average score for all children in the program with assessment results during that checkpoint.



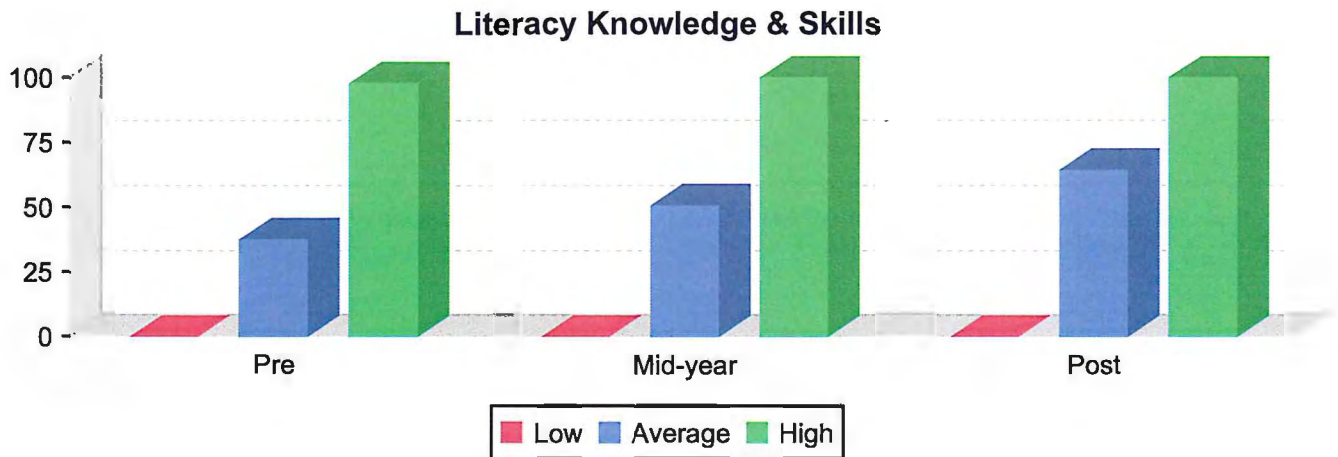
	<u>Pre</u>		<u>Mid-year</u>		<u>Post</u>
High Percentage	100.00		100.00		100.00
Average Percentage	52.41		67.64		79.54
Low Percentage	0.00		0.00		0.00
Average Percentage Gain <Loss>			15.23		11.90
Total Children in Program:	3,959	Total No. Sites:	43	Total No. Classrooms:	197
Children with Assessment data	3,955		3,632		3,615

The following graph reflects the range of scores for children enrolled in Hidalgo County Head Start based on the Head Start Child Development and Early Learning Framework. Graphs and the numbers represented by the graphs are based on highest score, lowest score and average score for all children in the program with assessment results during that checkpoint.



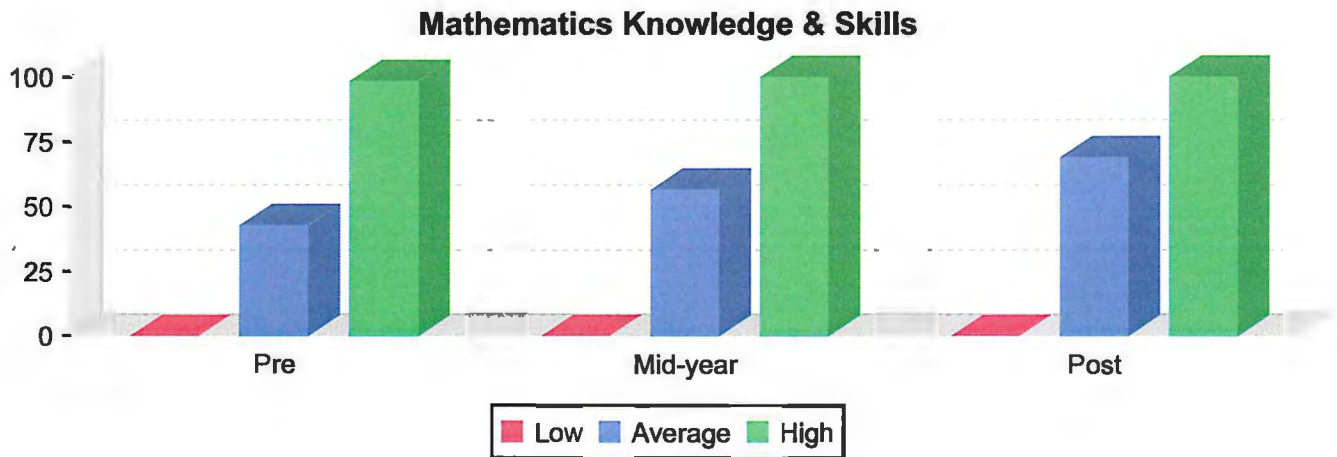
	<u>Pre</u>	<u>Mid-year</u>	<u>Post</u>
High Percentage	96.91	97.94	97.94
Average Percentage	45.53	57.54	68.62
Low Percentage	0.00	0.00	0.00
Average Percentage Gain <Loss>		12.01	11.09
Total Children in Program:	3,959	Total No. Sites: 43	Total No. Classrooms: 197
Children with Assessment data	3,955	3,632	3,615

The following graph reflects the range of scores for children enrolled in Hidalgo County Head Start based on the Head Start Child Development and Early Learning Framework. Graphs and the numbers represented by the graphs are based on highest score, lowest score and average score for all children in the program with assessment results during that checkpoint.



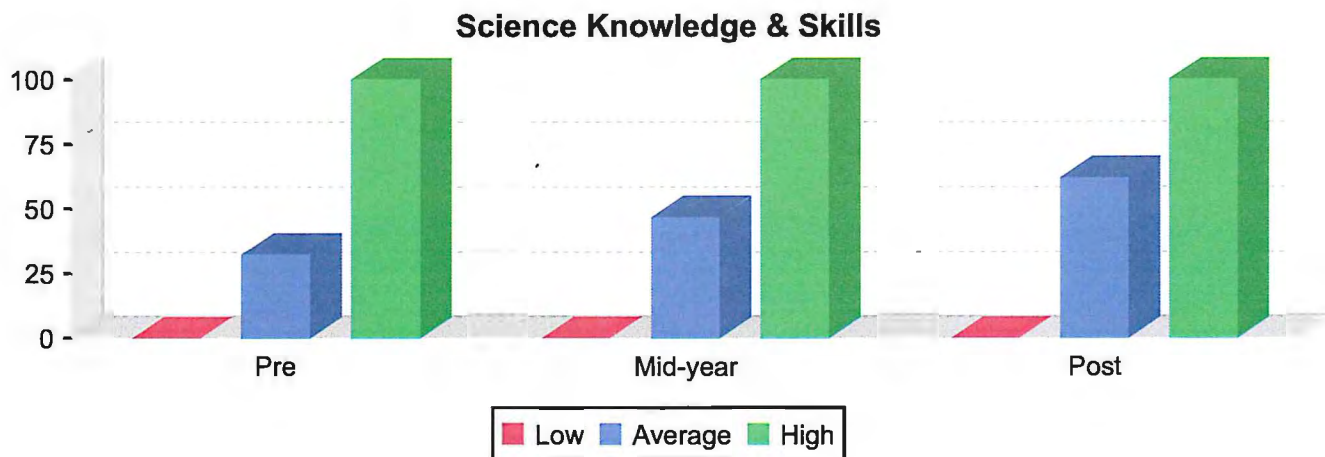
	<u>Pre</u>		<u>Mid-year</u>		<u>Post</u>
High Percentage	97.96		100.00		100.00
Average Percentage	37.71		50.71		64.35
Low Percentage	0.00		0.00		0.00
Average Percentage Gain <Loss>			13.00		13.64
Total Children in Program:	3,959	Total No. Sites:	43	Total No. Classrooms:	197
Children with Assessment data	3,955		3,632		3,615

The following graph reflects the range of scores for children enrolled in Hidalgo County Head Start based on the Head Start Child Development and Early Learning Framework. Graphs and the numbers represented by the graphs are based on highest score, lowest score and average score for all children in the program with assessment results during that checkpoint.



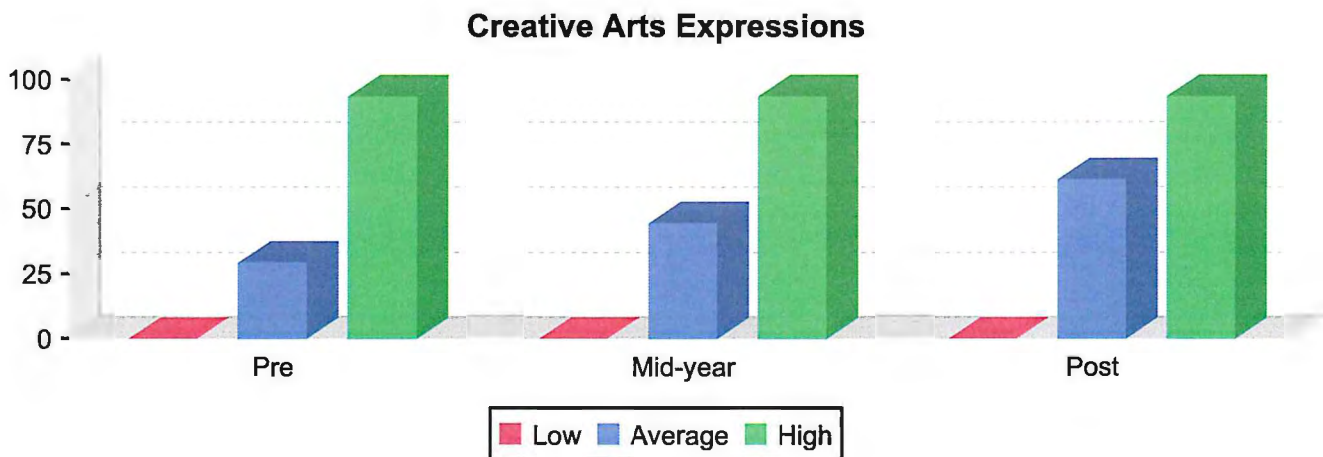
	<u>Pre</u>		<u>Mid-year</u>		<u>Post</u>
High Percentage	98.53		100.00		100.00
Average Percentage	42.94		56.55		68.88
Low Percentage	0.00		0.00		0.00
Average Percentage Gain <Loss>			13.60		12.33
Total Children in Program:	3,959	Total No. Sites:	43	Total No. Classrooms:	197
Children with Assessment data	3,955		3,632		3,615

The following graph reflects the range of scores for children enrolled in Hidalgo County Head Start based on the Head Start Child Development and Early Learning Framework. Graphs and the numbers represented by the graphs are based on highest score, lowest score and average score for all children in the program with assessment results during that checkpoint.



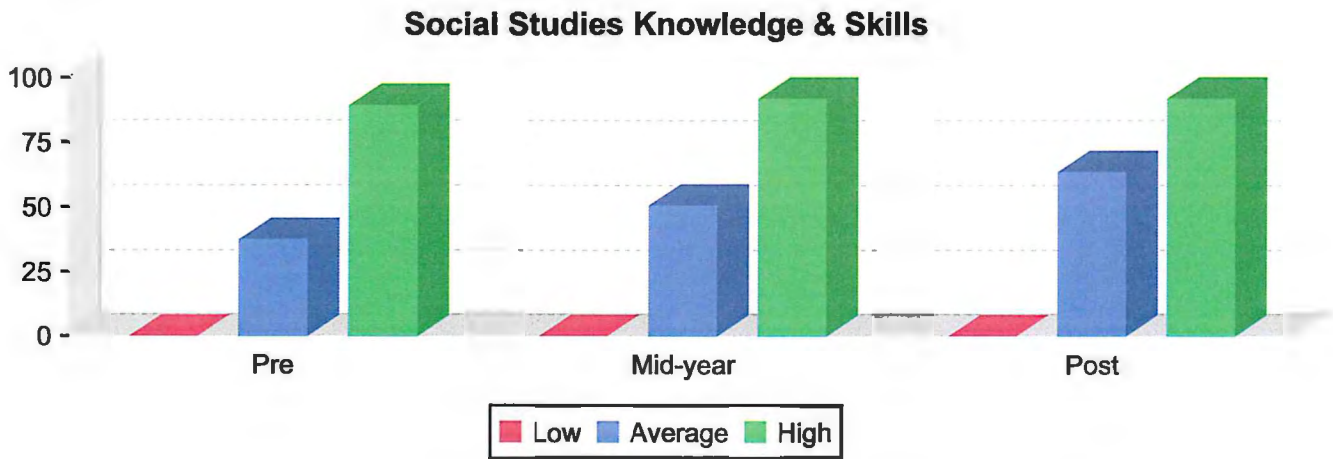
	<u>Pre</u>		<u>Mid-year</u>		<u>Post</u>
High Percentage	100.00		100.00		100.00
Average Percentage	32.41		46.70		61.85
Low Percentage	0.00		0.00		0.00
Average Percentage Gain <Loss>			14.29		15.15
Total Children in Program:	3,959	Total No. Sites:	43	Total No. Classrooms:	197
Children with Assessment data	3,955		3,632		3,615

The following graph reflects the range of scores for children enrolled in Hidalgo County Head Start based on the Head Start Child Development and Early Learning Framework. Graphs and the numbers represented by the graphs are based on highest score, lowest score and average score for all children in the program with assessment results during that checkpoint.



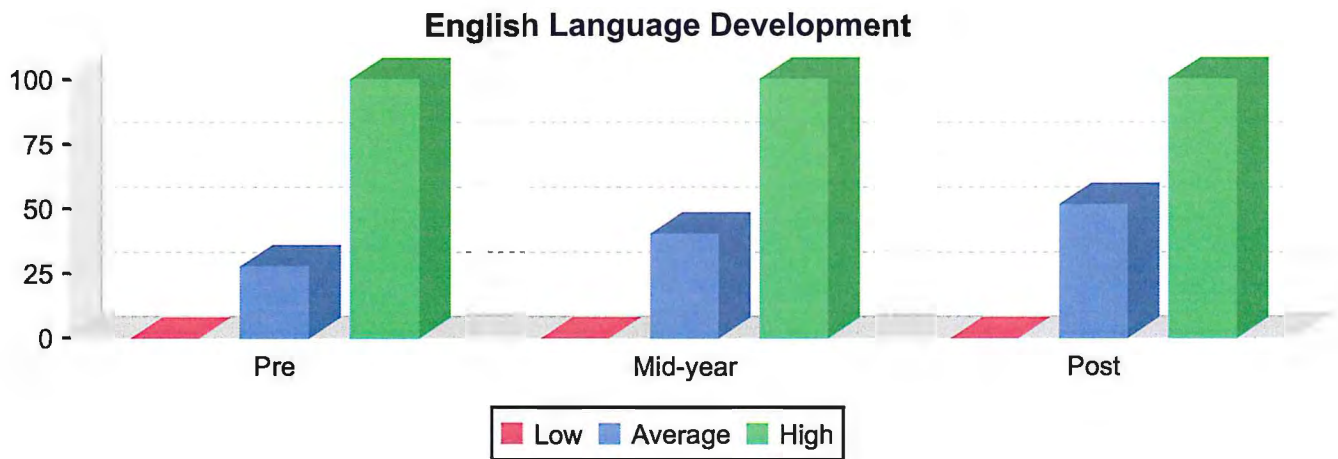
	<u>Pre</u>		<u>Mid-year</u>		<u>Post</u>
High Percentage	93.33		93.33		93.33
Average Percentage	29.43		44.54		61.28
Low Percentage	0.00		0.00		0.00
Average Percentage Gain <Loss>			15.11		16.75
Total Children in Program:	3,959	Total No. Sites:	43	Total No. Classrooms:	197
Children with Assessment data	3,955		3,632		3,615

The following graph reflects the range of scores for children enrolled in Hidalgo County Head Start based on the Head Start Child Development and Early Learning Framework. Graphs and the numbers represented by the graphs are based on highest score, lowest score and average score for all children in the program with assessment results during that checkpoint.



	<u>Pre</u>	<u>Mid-year</u>	<u>Post</u>
High Percentage	89.19	91.89	91.89
Average Percentage	37.45	50.64	63.50
Low Percentage	0.00	0.00	0.00
Average Percentage Gain <Loss>		13.19	12.86
Total Children in Program:	3,959	Total No. Sites: 43	Total No. Classrooms: 197
Children with Assessment data	3,955	3,632	3,615

The following graph reflects the range of scores for children enrolled in Hidalgo County Head Start based on the Head Start Child Development and Early Learning Framework. Graphs and the numbers represented by the graphs are based on highest score, lowest score and average score for all children in the program with assessment results during that checkpoint.



	<u>Pre</u>		<u>Mid-year</u>		<u>Post</u>
High Percentage	100.00		100.00		100.00
Average Percentage	27.94		40.39		51.65
Low Percentage	0.00		0.00		0.00
Average Percentage Gain <Loss>			12.45		11.26
Total Children in Program:	2,518	Total No. Sites:	43	Total No. Classrooms:	196
Children with Assessment data	2,516		2,352		2,329