

HIDALGO COUNTY REGIONAL MOBILITY AUTHORITY



Project Briefing for Hidalgo County Commissioner's Court
Tuesday July 28, 2015

1 <http://www.hcrma.net>



HCRMA
HIDALGO COUNTY REGIONAL MOBILITY AUTHORITY

OVERVIEW

- ▶ HCRMA Background
- ▶ SH 365 Project Progress
- ▶ IBTC Project Progress
- ▶ Overweight/Oversize Corridor Permitting Progress

MISSION STATEMENT:

“To provide our customers with a rapid and reliable alternative for the safe and efficient movement of people, goods and services.”



BOARD LEADERSHIP

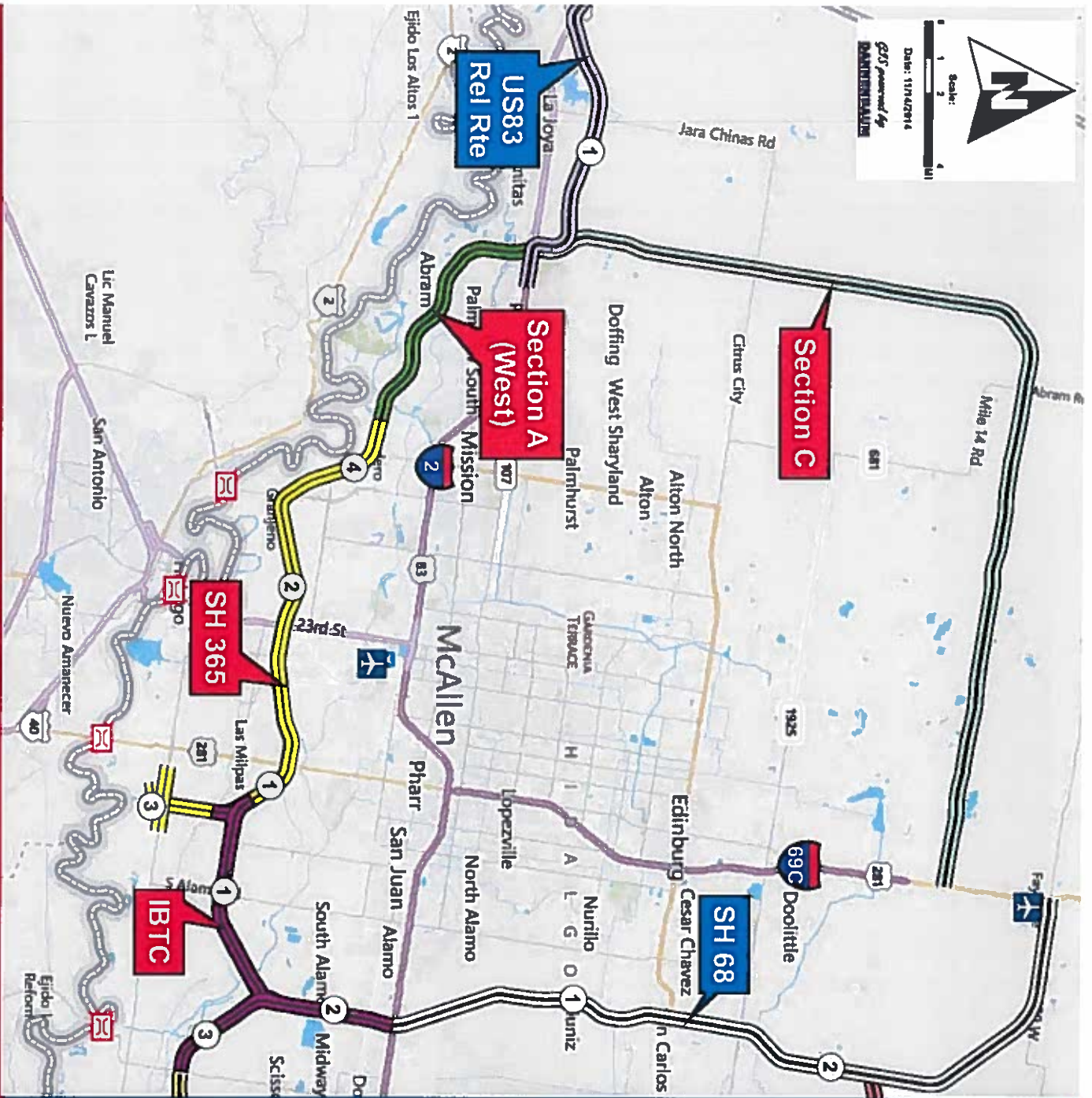
- ▶ Randy Sweeten, Chairman
- ▶ Josue Reyes, Vice Chairman
- ▶ Ricardo Perez, Secretary/Treasurer
- ▶ Forrest Runnels, Director
- ▶ David Guerra, Director
- ▶ Alonzo Cantu, Director
- ▶ Julian Ybarra, Director

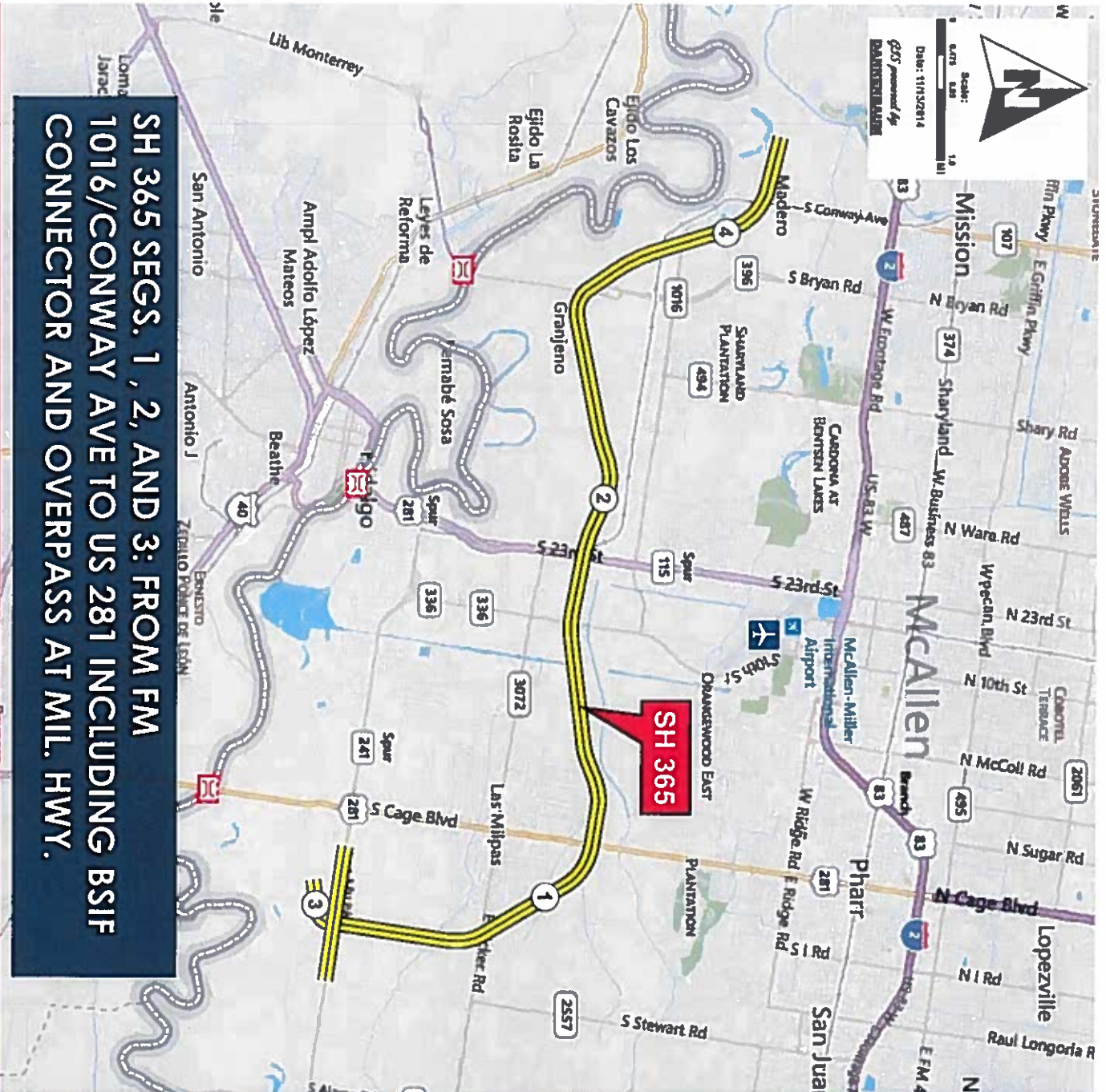


STRATEGIC PLAN

DEVELOP THE INFRASTRUCTURE TO SERVE A POPULATION OF APPROXIMATELY 800,000 RESIDENTS

AND 5 INT'L. PORTS OF ENTRY





SH 365 SEGS. 1, 2, AND 3: FROM FM 1016/CONWAY AVE TO US 281 INCLUDING BSIF CONNECTOR AND OVERPASS AT MIL. HWY.

5 <http://www.hcrma.net>

SH 365 PROJECT PROGRESS

MAJOR MILESTONES:

- NEPA CLEARANCE 07/03/2015
- SH 365 SEG. 3 - LETTING: 08/2015
- CONSTR. START: 01/2016
- SH 365 SEGS. 1 & 2 - LETTING: 03/2016
- CONSTR. START: 07/2016



HCRMA
 HIDALGO COUNTY REGIONAL MOBILITY AUTHORITY

▶ Environmental

- ▶ TXDOT ENV has rendered a Finding of No Significant Impact (FONSI) on 7/3/15

SH 365 PROJECT PROGRESS

▶ Design

- ▶ PS&E on SH 365 Segment 3 (US 281/BSIF) is 100% complete; PS&E on SH 365 Segments 1 and 2 are 90% complete.
- ▶ Geo-technical for SH 365 Segment 3 (US 281) is 100% complete; Geo-technical for SH 365 Segments 1 and 2 are 95% complete.
- ▶ Onsite Hydrologic Studies for SH 365 Segments 1, 2, and 3 are 100% complete.



▶ ROW Mapping / Acquisition

SH 365

PROJECT

PROGRESS

- ▶ Mapping complete (Segments 1 – 4)
- ▶ Acquisition complete on Seg. 3 (US 281 / BSLF Connector)
- ▶ Acquisition ongoing for Segs. 1 & 2:
 - ▶ ROW Maps and Parcels for Segs. 1 & 2 delivered to ROW team
 - ▶ Appraisals in development
 - ▶ Offers have begun to be made from US 281 to Jackson Rd
- ▶ **Utility Relocations**
 - ▶ Utility relocations on Segment 3 are ongoing
 - ▶ Utility kickoff meetings conducted on Segments 1 & 2



SH 365 PROJECT PROGRESS

- ▶ Construction Phase
- ▶ SH 365 Seg. 3: US 281 / BSIF Connector:
 - ▶ Bid advertisement ready for publishing this weekend 8/2/2015 (pending Letter of Authority from TxDOT).
 - ▶ Bid Proposal ready for publishing online on Day 1 of advertising the project, and outlines parameters such as:
 - ▶ The types of bonds the bidders need when they submit their proposals to the RMA; time for submitting bids; location for pre construction meeting;
 - ▶ federal/state requirements on wages/non-discrimination/etc.;
 - ▶ and all specifications they'll need for providing a responsive bid with the construction done to TxDOT specifications.



SIB LOAN STATUS

▶ SIB Loan was submitted 05/26/2015.

▶ SIB Loan part of a funding package including:

- ▶ Toll Equity Grant (Cat 12 + Partial UTP funds + Cat 10 Demo & High Priority Funds)
- ▶ Toll revenue bonds
- ▶ VRF Bond Proceeds



June 11, 2015

The Honorable Armando Martinez
Texas House of Representatives
P.O. Box 29310
Austin, Texas 78788

Dear Representative Martinez:

In accordance with the provisions of Texas Department of Transportation (TxDOT) Rider 14c, General Appropriations Act, 82nd Legislature, I am submitting the following information regarding an application for a State Infrastructure Bank loan in TxDOT's Pease District.

Applicant: Hidalgo County Regional Mobility Authority

Project: State Highway 385 (SH 385) project includes three Segments of construction of toll and non-toll improvements from FM 396 (Anzalduas Highway) to US 281 (Military Highway) for a project length of 15.2 miles. Segments 1 and 2 are for construction of toll road improvements from FM 396 (Anzalduas Highway) to US 281 (Military Highway). Segment 3, which constitutes US 281 and the Border Safety Inspection Facility Connector, is a non-toll improvement from 0.45 Mile East of Spur 600 (Cage Blvd) to FM 2557 (Stewart Rd), and from Spur 29 (S Veterans Drive) to US 281 (Military Highway) below the San Juan Rd overpass.

Requested Loan: \$55,000,000

Project Status: The project is under review by TxDOT.

Effect of Request: The approval of the loan request would not negatively affect any other projects. If you have any questions or would like additional information, please feel free to call me at (512) 305-9507 or your staff may contact Trent Thomas in TxDOT's State Legislative Affairs Division at (512) 463-6397.

Sincerely,

Benjamin Kasher
Innovative Financial/Debt Management Officer

CC: The Honorable Armando Martinez, District Office
Texas Transportation Commission
Toribio Garza Jr., Pease District Engineer, TxDOT
Trent Thomas, State Legislative Affairs Division, TxDOT

OUR GOALS
MAINTAIN A SAFE SYSTEM • ADDRESS CONGESTION • CONNECT TEXAS COMMUNITIES • BEST IN CLASS STATE AGENCY
An Equal Opportunity Employer



SH 365 PROJECT SCHEDULE

SH 365 / US 281 Improvements - Phase I (Segment 3)

(US 281 / Mil. Hwy. from SP600 / Cage Blvd. to FM 2557 / Stewart Rd and the BSIF Connector)

WORK TASK	2015												2016											
	Jan	Feb	Mar	Apr	May	Jun	Jul	Aug	Sep	Oct	Nov	Dec	Jan	Feb	Mar	Apr	May	Jun	Jul	Aug	Sep	Oct	Nov	Dec
Env. Clearance (FONSI)							◆																	
Final Design (Complete)																								
ROW Acquisition (Complete)																								
Utility Relocation																								
Bid Phase Starts												◆												
Construction Starts																								◆

CONSTRUCTION FOR SH 365 PHASE I: FROM 01/01/2016 TO 08/31/2017

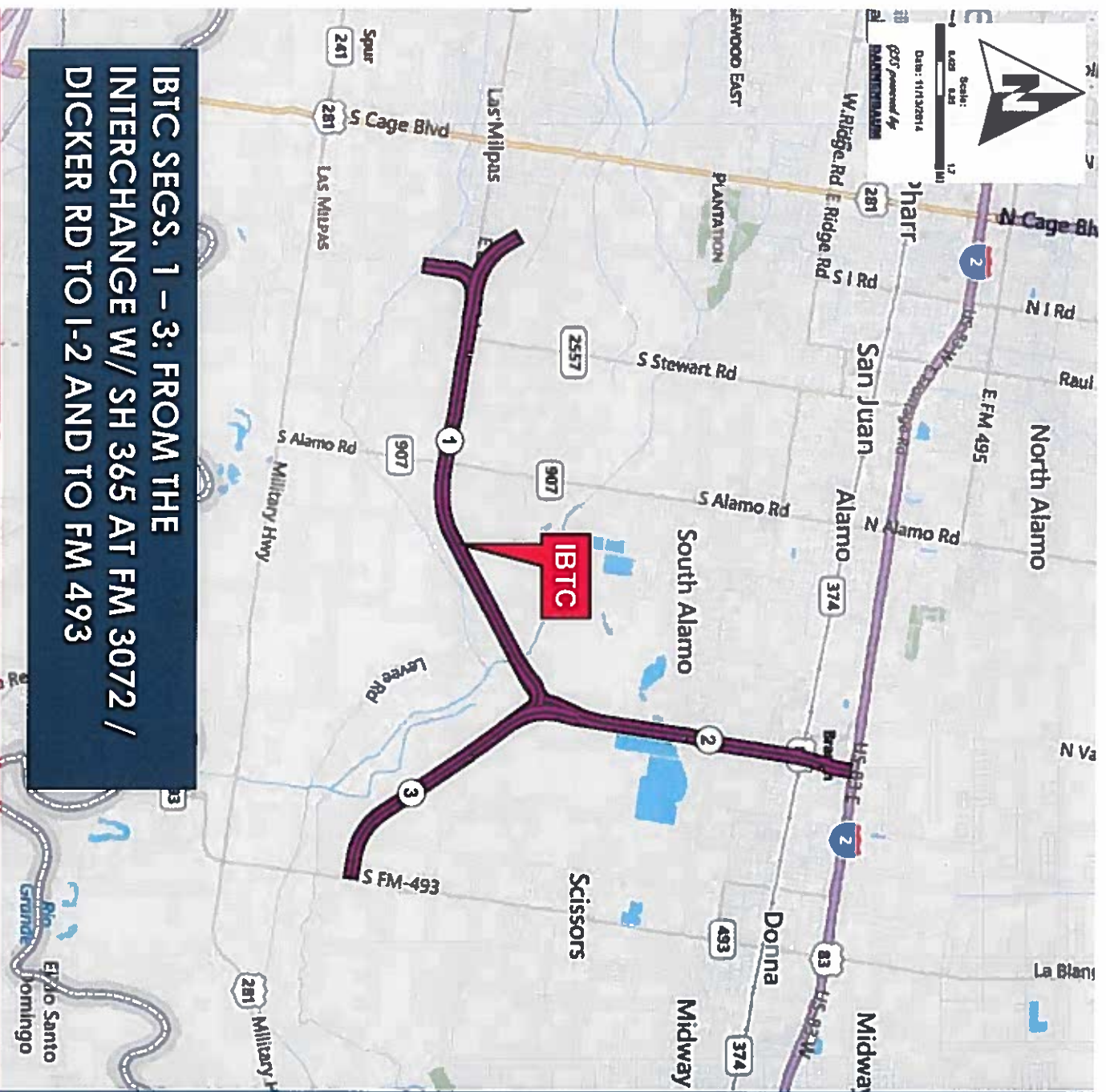
SH 365 - Phase II (Segments 1 & 2)

(FM 396 / Anzalduas Hwy. to US 281 / Military Hwy)

WORK TASK	2015												2016											
	Jan	Feb	Mar	Apr	May	Jun	Jul	Aug	Sep	Oct	Nov	Dec	Jan	Feb	Mar	Apr	May	Jun	Jul	Aug	Sep	Oct	Nov	Dec
Env. Clearance (FONSI)							◆																	
Final Design																								
ROW Acquisition Phase																								
Utility Relocation																								
Bid Phase Starts																								◆
Construction Starts																								◆

CONSTRUCTION FOR SH 365 PHASE II: FROM 07/01/2016 TO 12/31/2018





IBTC SEGS. 1 – 3: FROM THE INTERCHANGE W/ SH 365 AT FM 3072 / DICKER RD TO I-2 AND TO FM 493

IBTC PROJECT PROGRESS

MAJOR MILESTONES:

ENV CLEAR. 10/2016

BID DATE: 03/2017

CONSTR. DATE:

06/2017

OPENING DATE:

12/2020

11 <http://www.hcrima.net>



HCRMA
HIDALGO COUNTY REGIONAL MOBILITY AUTHORITY

▶ Environmental

- ▶ NEPA document and fieldwork on hold while HCRMA finalizes SH 365 project financing coordination.

IBTC PROJECT PROGRESS

▶ Design

- ▶ PS&E for IBTC Segments 1 - 3 are 40% to 60% complete.
- ▶ Geo-technical borehole efforts are on pause for IBTC Segments 1-3.
- ▶ Onsite Hydrologic Studies for IBTC have been reviewed.
- ▶ Subsurface Utility Exposures are 100% complete.



- **ROW Mapping**

- ▶ Strip map for complete IBTC project is complete for the entire project.

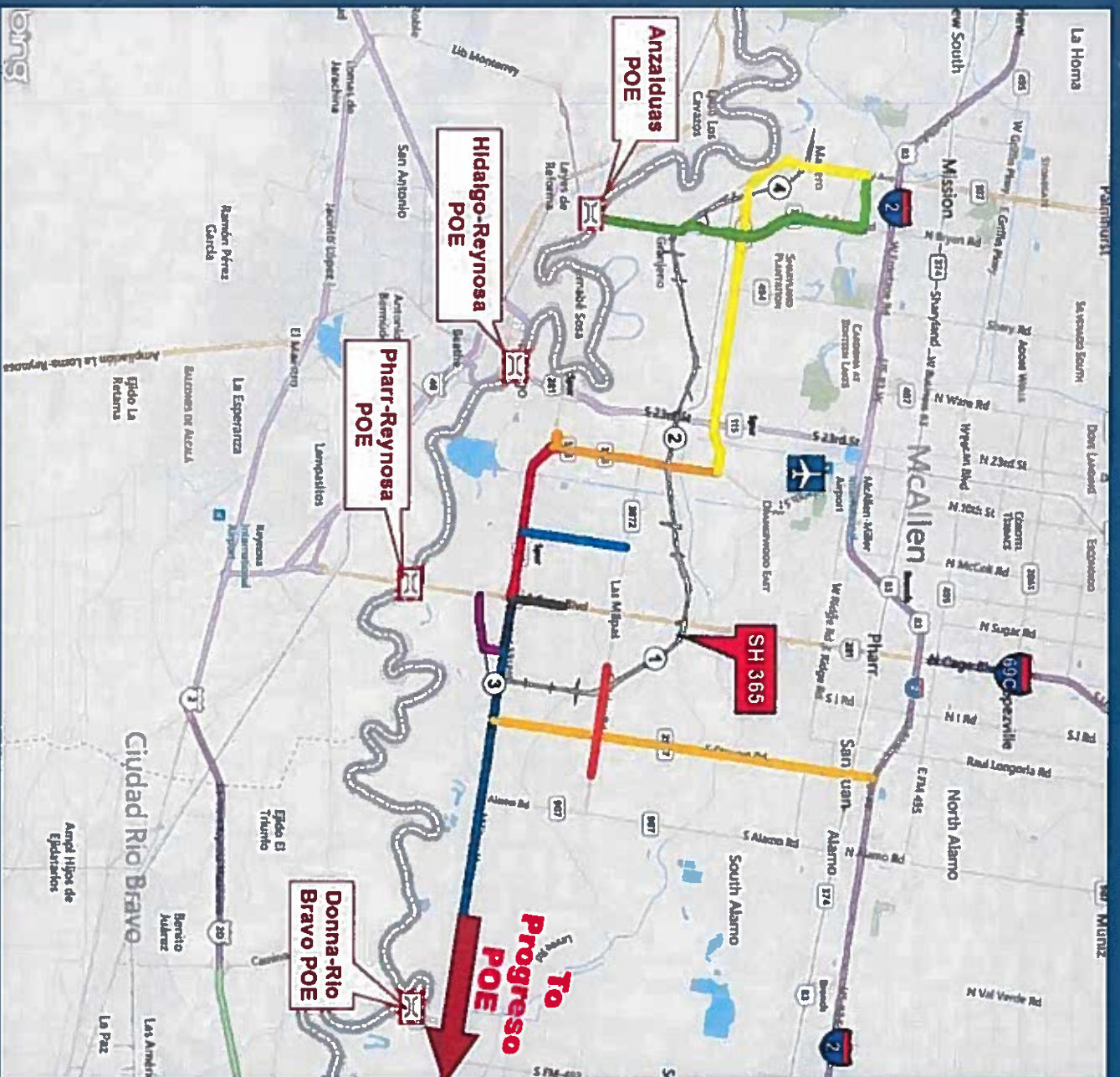
IBTC

PROJECT PROGRESS

- **ROW Acquisition**

- ▶ All parcels north of Donna Reservoirs have been submitted to the ROW Acquisition Team.
- ▶ Early acquisition is nearing completion for the AEP/EIT local project ROW for the transmission line.

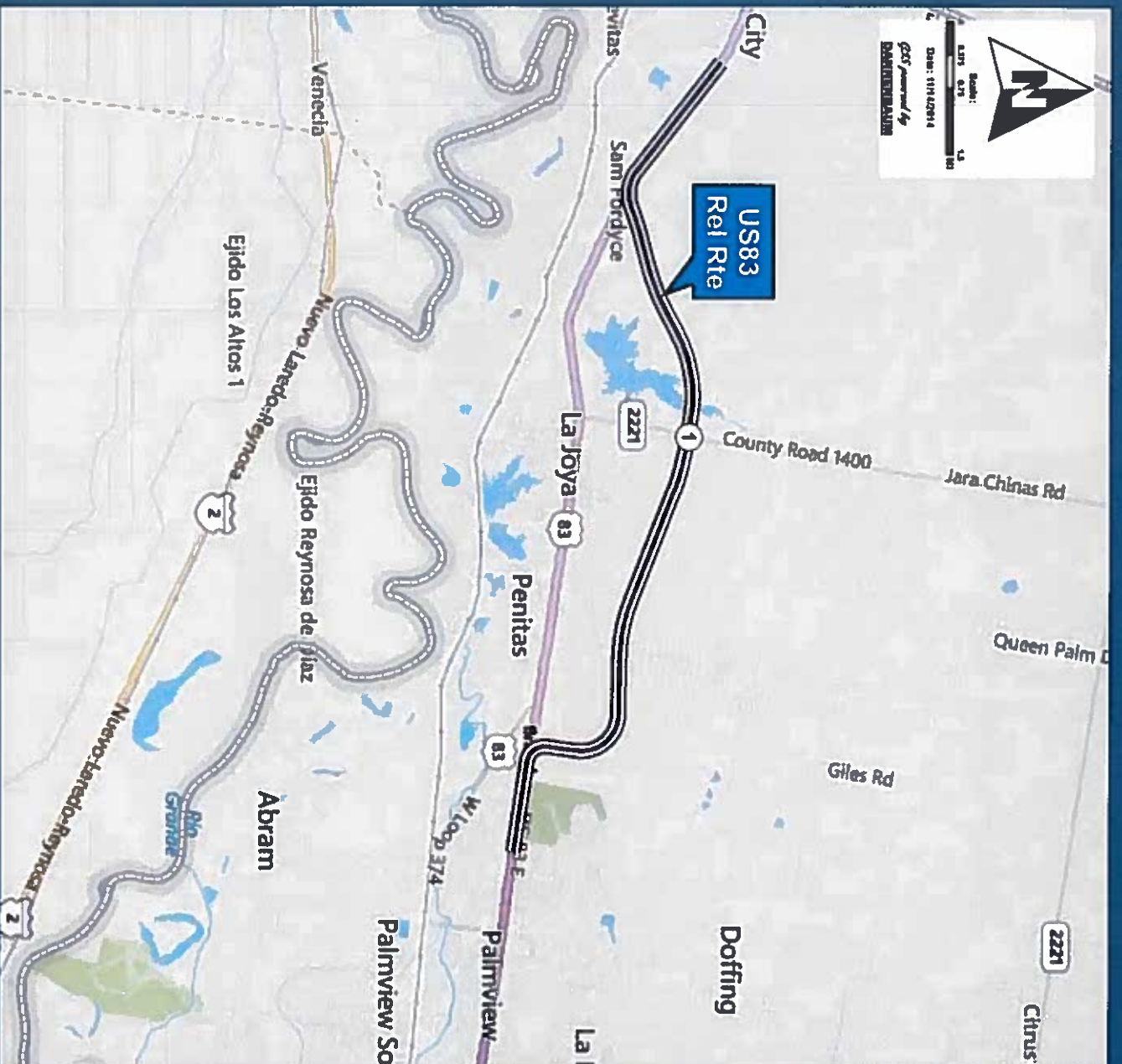




OWM/OS CORRIDOR

PERMITTING HIGHLIGHTS:

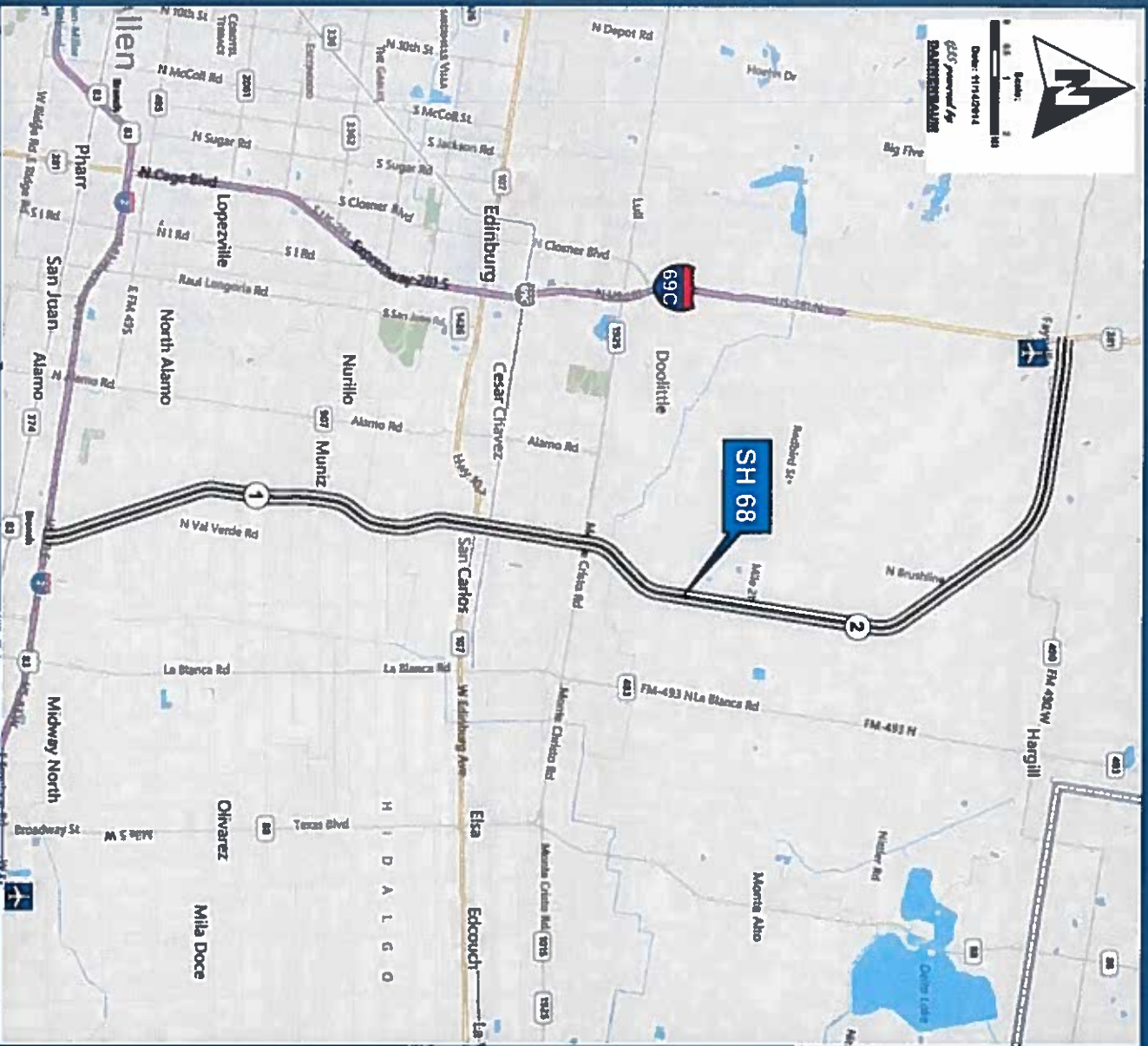
- ▶ TOTAL PERMITS ISSUED: 01/2015
- ▶ PERMITS ISSUED: 5126
- ▶ TOTAL AMOUNT COLLECTED: \$419,281.60
- ▶ Convenience Fees (credit card): \$9,201.60
- ▶ Total Permit Fees: \$410,080.00



US 83 RELIEF ROUTE (BY TXDOT)

DESCRIPTION:

- ▶ PROJECT LENGTH IS APPROX. 8.9 MI
- ▶ FROM 1.0 MI EAST OF FM 886 EAST TO 0.50 MI WEST OF SHOWERS RD
- ▶ PHASE 1 CONSTRUCTION AS FRONTAGE ROADS, LET BY TXDOT 07/2015
- ▶ FUTURE CONSTRUCTION PHASES TO BUILD TOLLROAD MAINLANES



SH 68 (BY TXDOT)

DESCRIPTION:

- ▶ PROJECT LENGTH IS APPROX. 22 MI (ALIGNMENT OPTIONS UNDER STUDY)
- ▶ FROM I-2 TO I-69C BETWEEN ALAMO AND DONNA AND RUNS NORTH TO I 69C/US 281 NORTH OF EDINBURG
- ▶ PHASE 1 CONSTRUCTION AS FRONTAGE ROADS UP TO FM 1925, FULLY FUNDED
- ▶ FUTURE CONSTRUCTION PHASES TO BUILD FRONTAGE ROADS FROM FM 1925 TO US 281 AND/OR TOLLROAD MAINLANES

QUESTIONS?

17 <http://www.hcrma.net>



HCRMA
HIDALGO COUNTY REGIONAL MOBILITY AUTHORITY