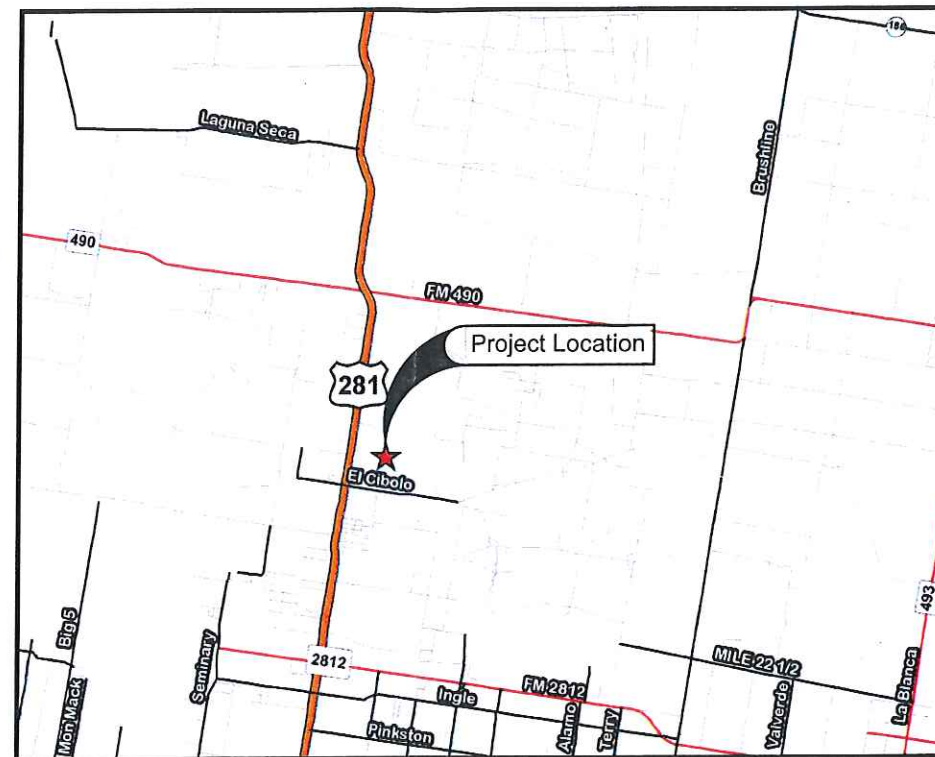


# HIDALGO COUNTY PRECINCT 4

Table of Contents	
No.	Description
1	Coversheet
2	Dimension Plan
3	Grading Plan
4	Gate & Canopy Plan



LOCATION MAP  
SCALE 1" = 6,000'

RAMON GARCIA  
County Judge

AC Cuellar  
Precinct 1 Commissioner

EDUARDO "EDDIE" CANTU  
Precinct 2 Commissioner

JOSE M. FLORES  
Precinct 3 Commissioner

JOSEPH PALACIOS  
Precinct 4 Commissioner

## CIBOLO JAIL PARKING LOT IMPROVEMENTS

**RECEIVED**

By Oscar Garza at 5:02 pm, Jul 15, 2015

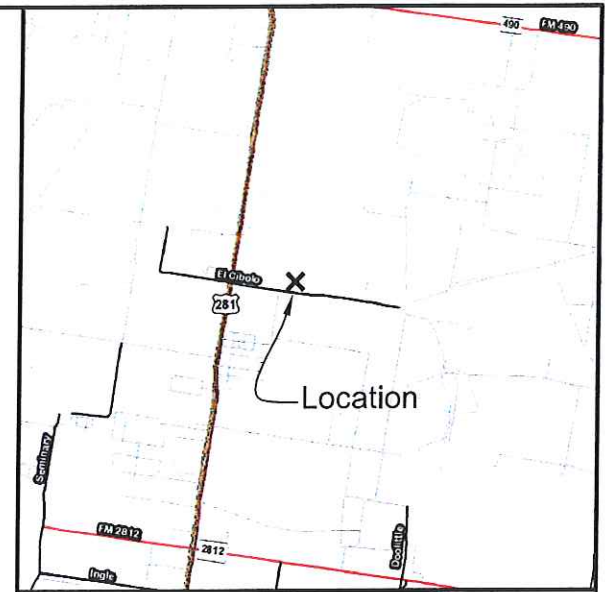
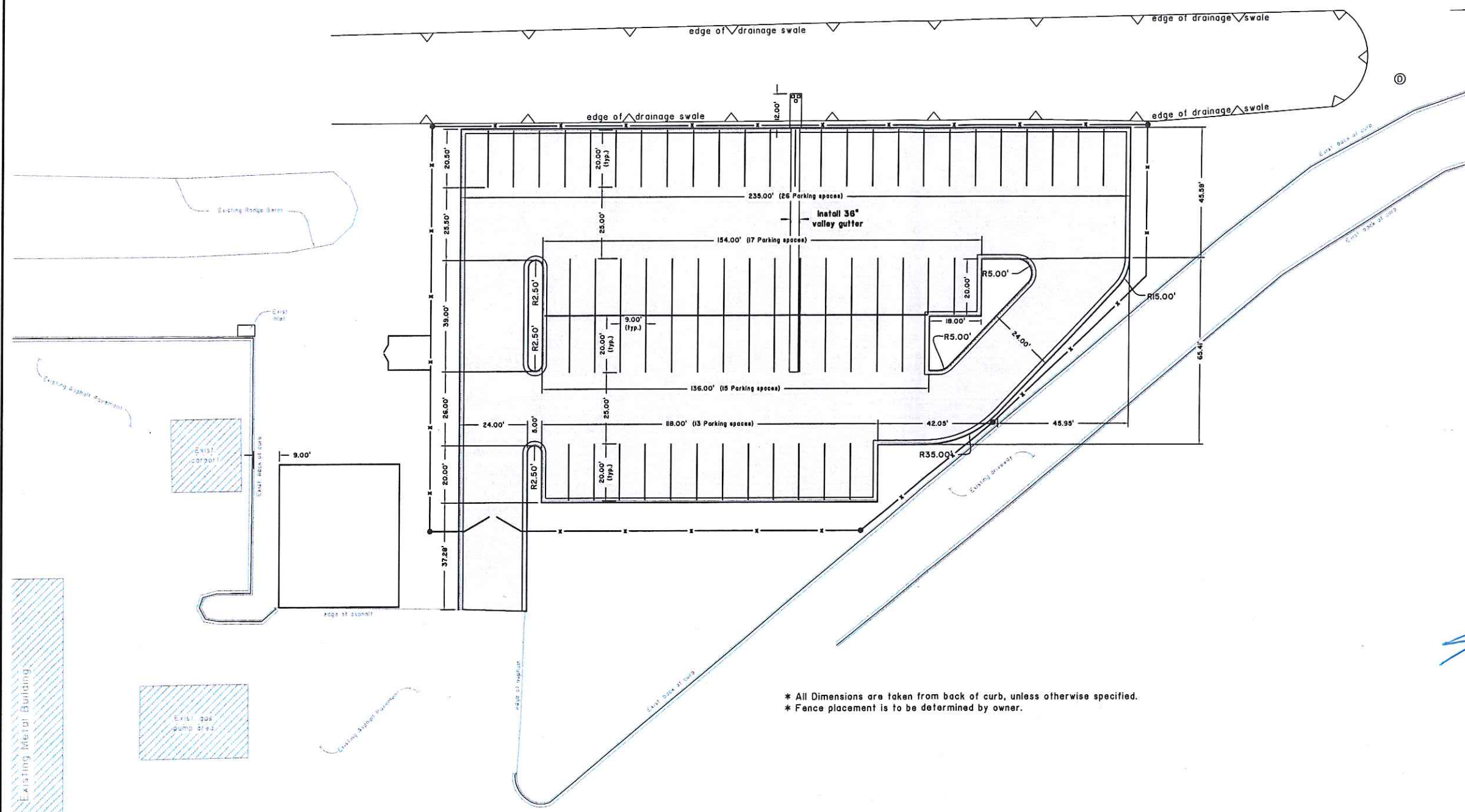


*Jose N. Saldivar*  
Jose N. Saldivar  
Licensed Professional  
Engineer # 94076  
07/15/15

2015

Scale 1" = 20'

Legend  
 [ ] Asphalt pavement



Rev. No.	Description	Chk By:	Date

Professional Engineer Seal for Jose N. Saldivar, License # 94076, State of Texas. Includes a signature and date 07/15/15.

Project:  
**CIBOLO JAIL**

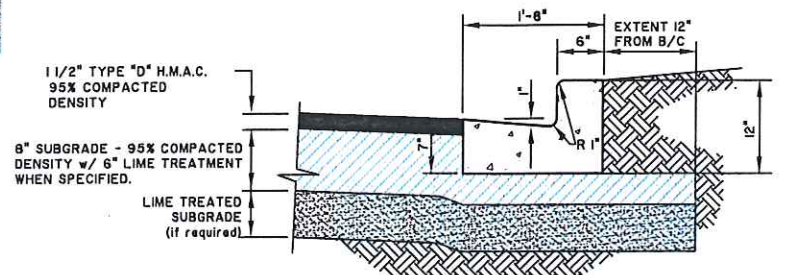
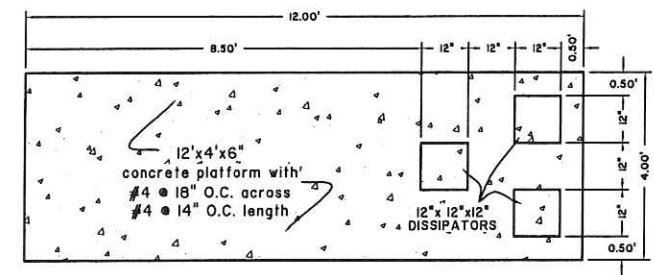
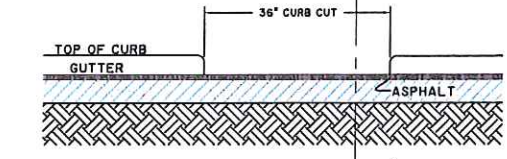
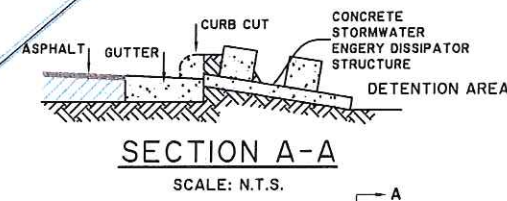
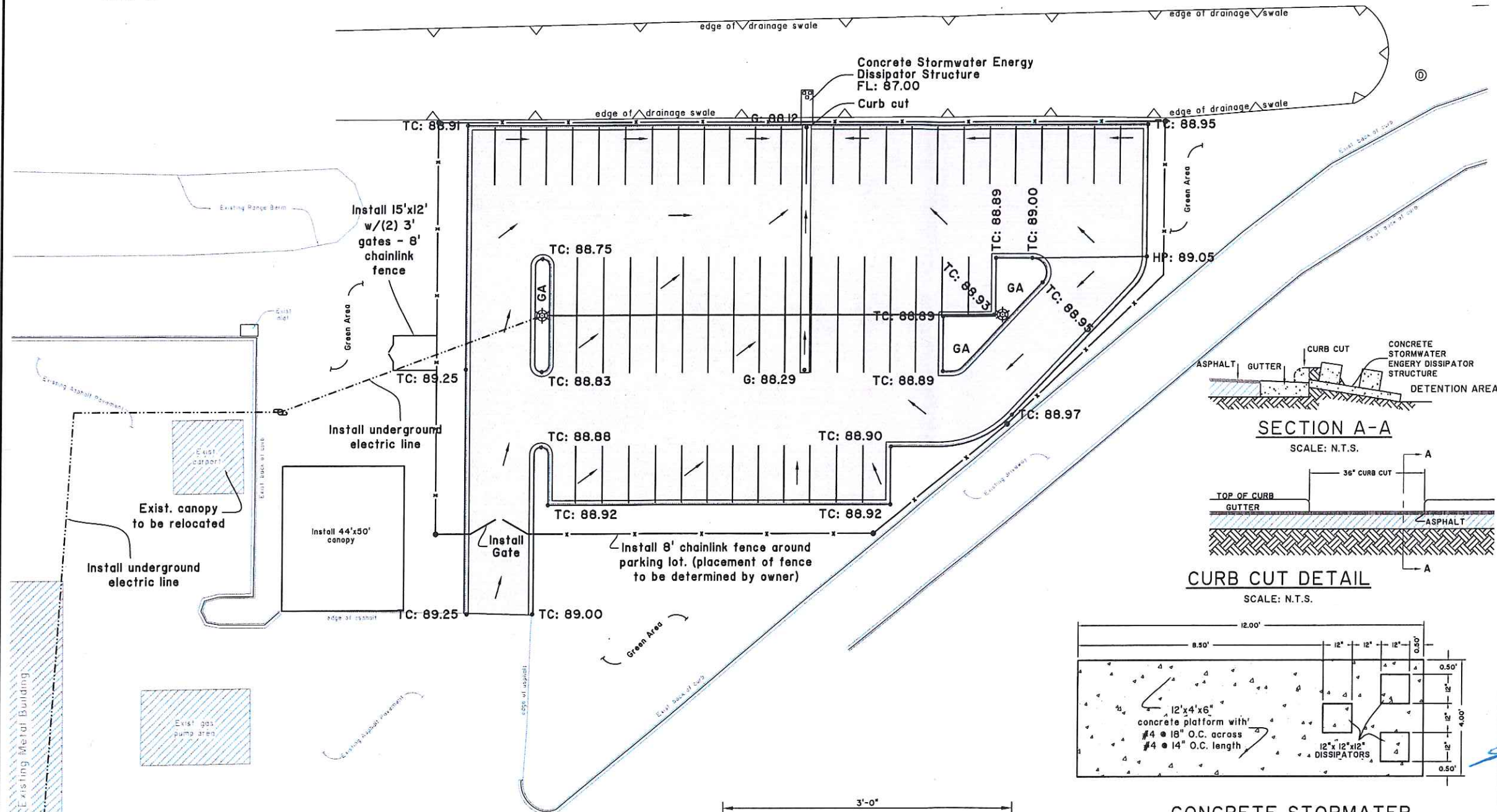
Sheet Title:  
**DIMENSION PLAN**

Date: June 15, 2015	Checked By: J.N.S.
Project No.:	Sheet 2 of 4

W:\Transmittals\Hidalgo Planning Department\15-05-29-15 Cibolo Jail\Grading.dwg

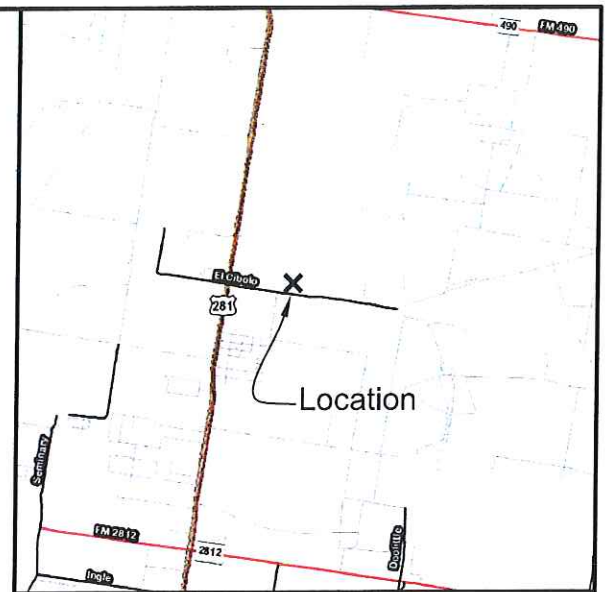
Scale 1" = 20'

**Legend**  
 GA Green Area  
 TC: Top of curb elevation  
 G: Gutter elevation  
 ⊙ Lamp Post  
 [ ] Asphalt pavement

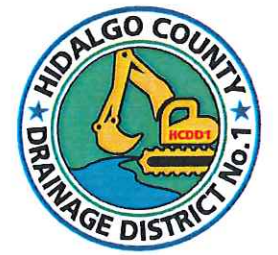


**GENERAL NOTES:**  
 1. ALL CONCRETE WORK SHALL BE TREATED WITH MEMBRANE CURING COMPOUND TYPE 2 WHITE PIGMENTED IN ACCORDANCE w/THD 1972 SPECIFICATIONS ITEM 531. CONSIDERED INCIDENTAL TO CONCRETE WORK.  
 2. 1/2" EXPANSION JOINTS REQUIRED AT 70' c.c. AND AT THE BEGINNING AND END OF ALL RADII. CONTRACTION JOINTS SHALL NOT EXCEED 10' c.c.

Estimated Quantities	
Item Description	Qty.
8" Subgrade	26,921 sq.ft.
1 1/2" Asphalt Pavement	25,640 sq.ft.
Concrete Curb & Gutter	1,000 lf.
36" Concrete Valley Gutter	86 lf.
Concrete Stormwater Dissipator Structure	1 LS
Lamp Post	2 ea.



**LOCATION MAP**  
 SCALE 1"=4000'



Rev. No.	Description	Chk By:	Date



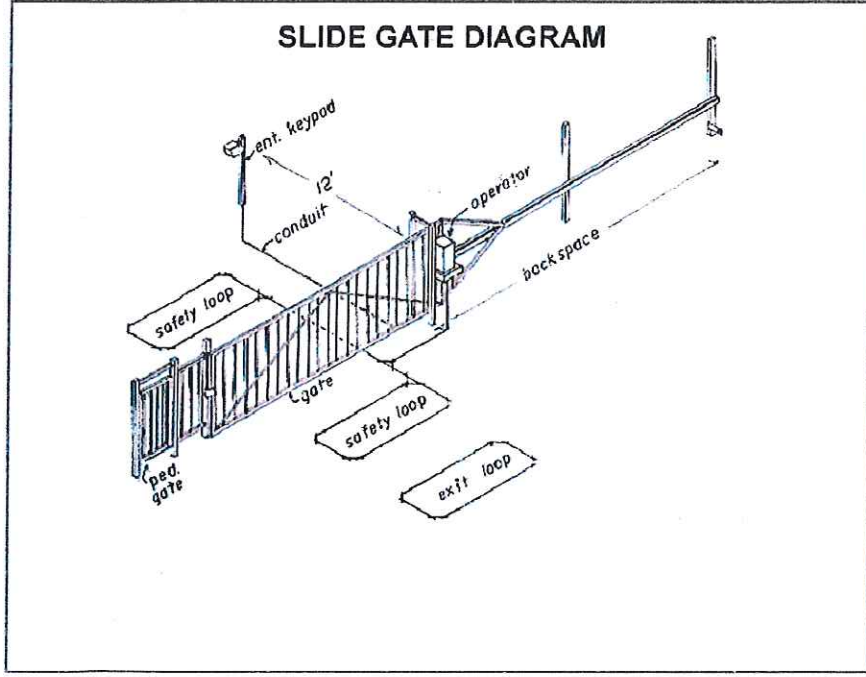
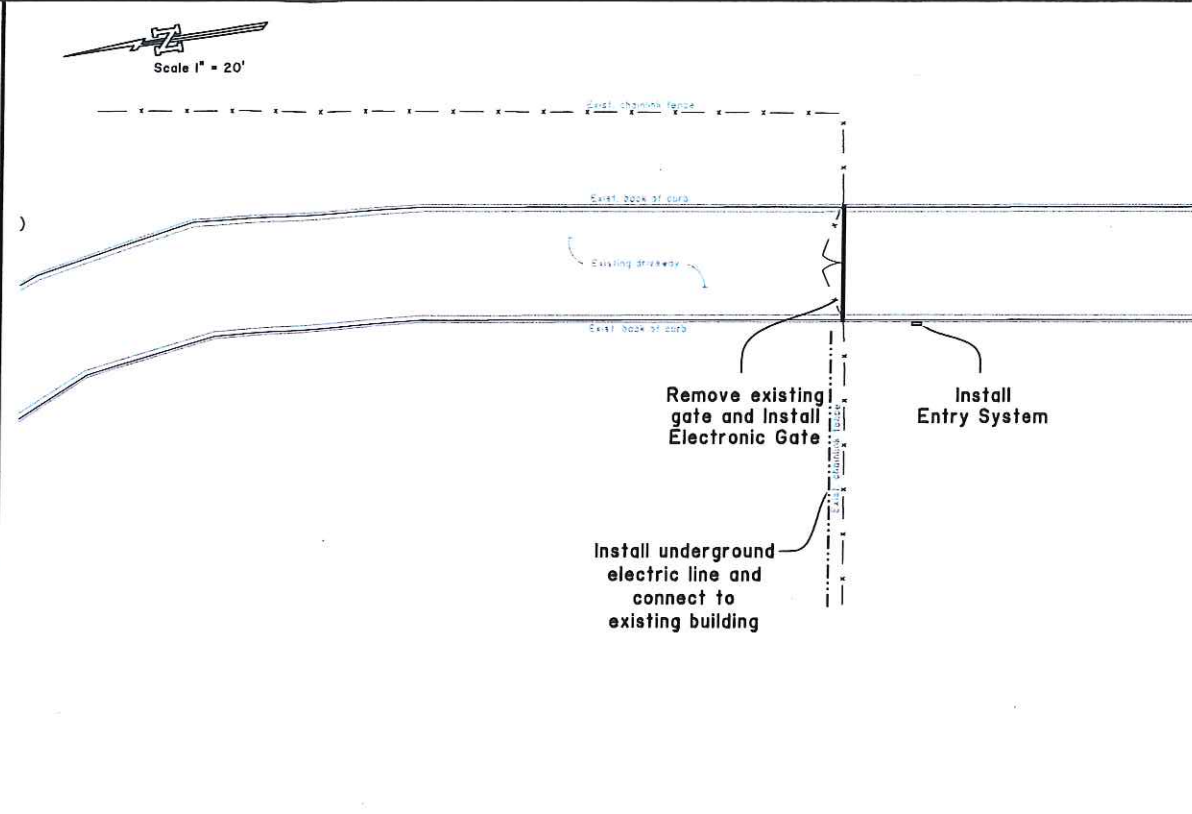
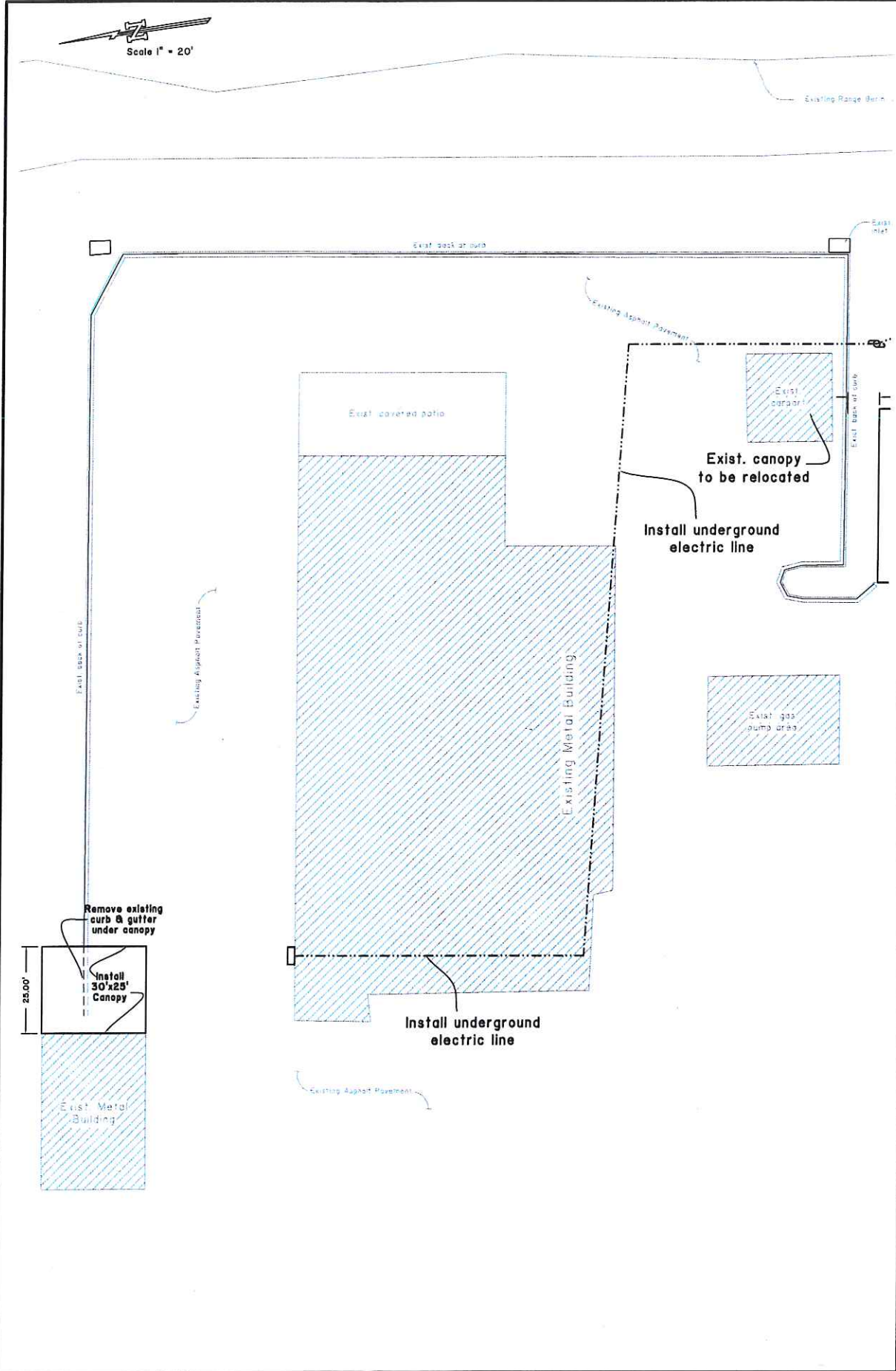
Jose N. Saldivar  
 Licensed Professional Engineer # 94076

Project: **CIBOLO JAIL**

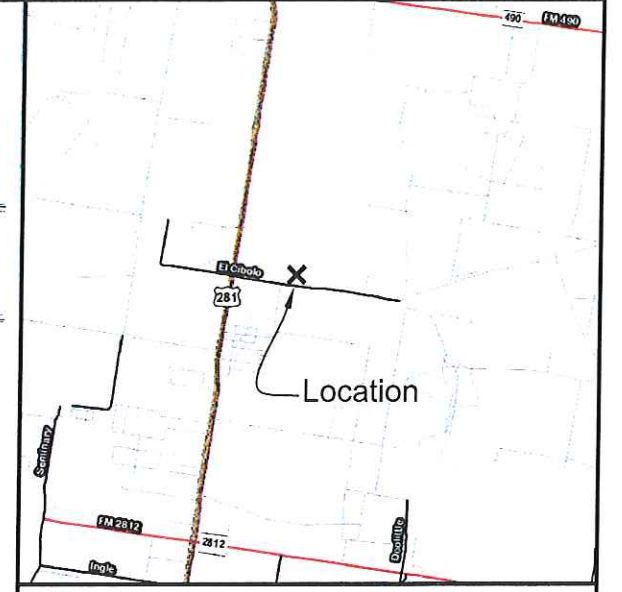
Sheet Title: **GRADING PLAN**

Date: **June 15, 2015** Checked By: **J.N.S.**  
 Project No. Sheet **3** of **4**

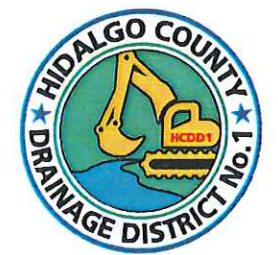
W:\Transmittals\Hidalgo Planning Department\14-05-29-15 Cibola Jail\Grading.dwg



\* Image for illustration purposes only. Equipment material, components and electronic gate to be designed by others.



LOCATION MAP  
SCALE 1"=4000'



Rev. No.	Description	Chk By:	Date



Jose N. Saldivar  
Licensed Professional Engineer # 94076  
07/15/15

Project:  
**CIBOLO JAIL**

Sheet Title:  
**GATE & CANOPY PLAN**

Date: <b>June 15, 2015</b>	Checked By: <b>J.N.S.</b>
Project No.:	Sheet <b>4</b> of <b>4</b>