

HIDALGO COUNTY REGIONAL MOBILITY AUTHORITY

HCRMA Board of Directors

Randy Sweeten, Chairman

Josue Reyes, Vice-Chairman

Ricardo Perez, Secretary/Treasurer

Julian Ybarra, Jr., Director

R. David Guerra, Director

Forrest Runnels, Director

Alonzo Cantu, Director

HCRMA Staff

Pilar Rodriguez, PE, Executive Dir.

Ramon Navarro IV, PE, CFM, Constr. Eng.

Celia Gaona, CIA, Auditor/Compliance Ofc.

Jose Castillo, CFO

Carlos "C.J" Moreno, Jr., Acquisition Coord.

Flor E. Koll, Executive Assistant

Program Management Consultant

DANNENBAUM ENGINEERING CORP

HCRMA Briefing Before the Hidalgo County Commissioner's Court
Provided: November 17, 2015

1 <http://www.hcrma.net>



HCRMA
HIDALGO COUNTY REGIONAL MOBILITY AUTHORITY

OVERVIEW

- ▶ HCRMA Background
- ▶ SH 365 Project Progress
- ▶ IBTC Project Progress
- ▶ Overweight/Oversize Corridor Permitting Progress

MISSION STATEMENT:

“To provide our customers with a rapid and reliable alternative for the safe and efficient movement of people, goods and services”



BOARD LEADERSHIP

- ▶ Randy Sweeten, Chairman
- ▶ Josue Reyes, Vice Chairman
- ▶ Riccardo Perez, Secretary/Treasurer
- ▶ Forrest Runnels, Director
- ▶ David Guerra, Director
- ▶ Alonzo Cantu, Director
- ▶ Julian Ybarra, Director

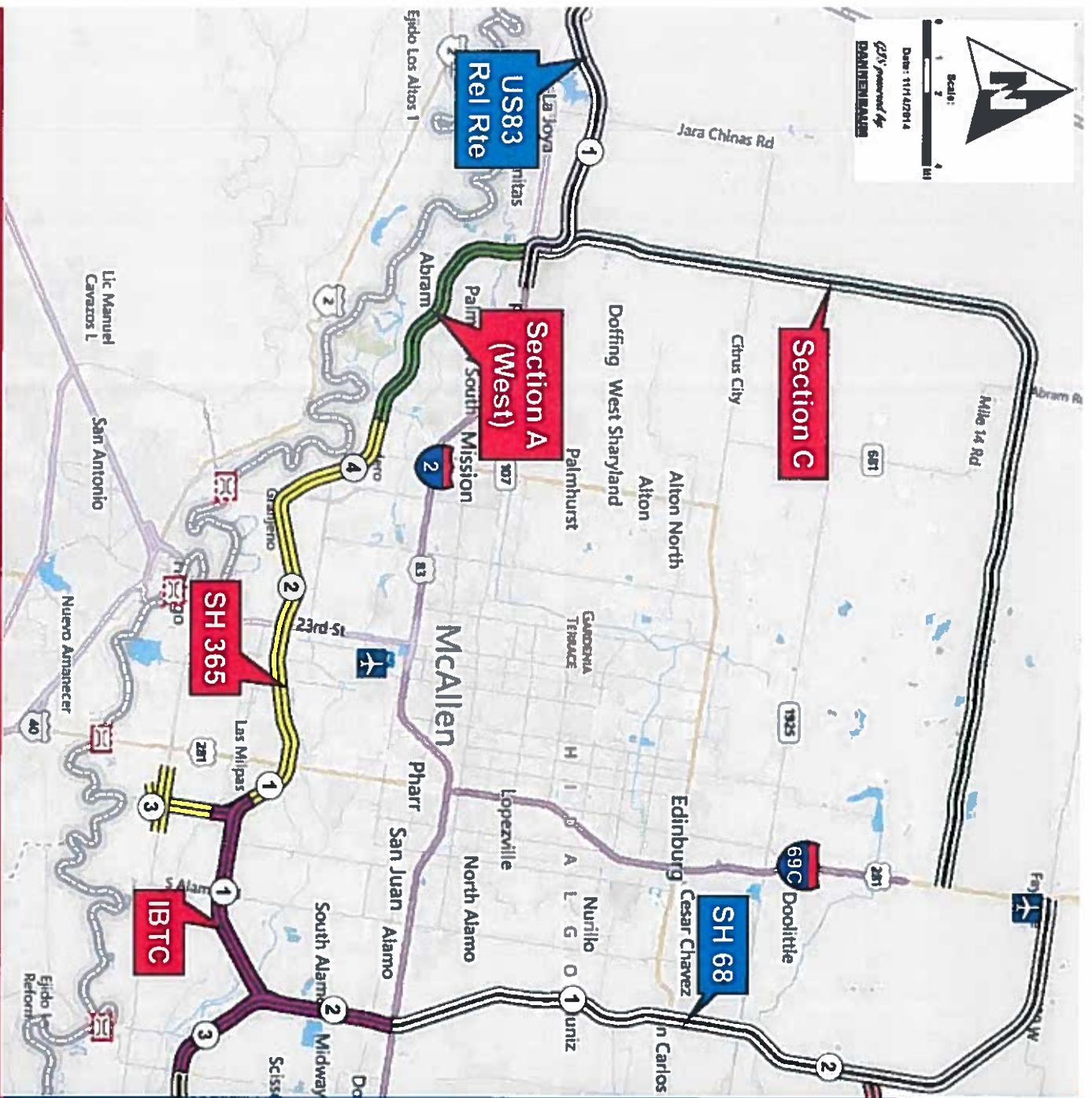


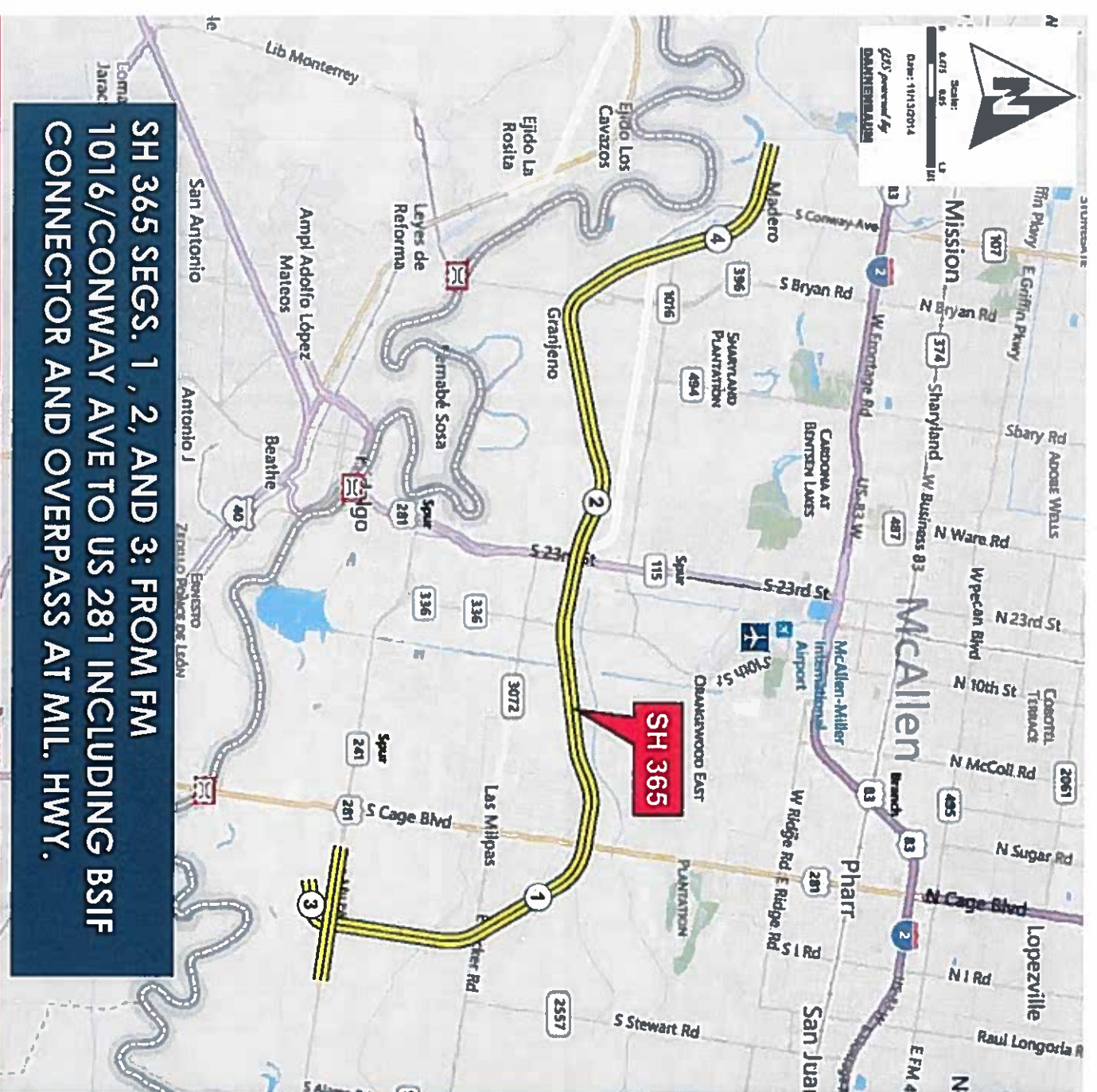
STRATEGIC PLAN

SHORT RANGE PLAN INCLUDES:

- ▶ SH 365
- ▶ IBTC
- ▶ US 83 REL. ROUTE
- ▶ SH 68

IN ORDER TO SERVE A POPULATION OF APPROXIMATELY 800,000 RESIDENTS AND 5 PORTS OF ENTRY.





SH 365 SEGS. 1, 2, AND 3: FROM FM 1016/CONWAY AVE TO US 281 INCLUDING BSIF CONNECTOR AND OVERPASS AT MIL. HWY.

5 <http://www.hcrma.net>

SH 365 PROJECT MILESTONES

NEPA CLEARANCE:
07/03/2015

SH 365 SEG. 3 -

LETTING: 09/2015

CONSTR. START:
01/2016

SH 365 SEGS. 1 & 2 -

LETTING: 05/2016

CONSTR. START:
10/2016

OPENING DATE:
04/2019



SH 365 PROJECT SCHEDULE

SH 365 / US 281 Improvements - Phase I (Segment 3)

(US 281 / Mil. Hwy. from SP600 / Cage Blvd. to FM 2557 / Stewart Rd and the BILF Connector)

WORK TASK	2015												2016											
	Jan	Feb	Mar	Apr	May	Jun	Jul	Aug	Sep	Oct	Nov	Dec	Jan	Feb	Mar	Apr	May	Jun	Jul	Aug	Sep	Oct	Nov	Dec
Env. Clearance (FONSI)							◆																	
Final Design (Complete)																								
ROW Acquisition (Complete)																								
Utility Relocation																								
Bid Phase Starts									◆															
Construction Starts																								

CONSTRUCTION FOR SH 365 PHASE I: FROM 02/01/2016 TO 09/30/2017

SH 365 - Phase II (Segments 1 & 2)

(FM 396 / Anzalduas Hwy. to US 281 / Military Hwy)

WORK TASK	2015												2016											
	Jan	Feb	Mar	Apr	May	Jun	Jul	Aug	Sep	Oct	Nov	Dec	Jan	Feb	Mar	Apr	May	Jun	Jul	Aug	Sep	Oct	Nov	Dec
Env. Clearance (FONSI)							◆																	
Final Design																								
ROW Acquisition Phase																								
Utility Relocation																								
Bid Phase Starts																								
Construction Starts																								

CONSTRUCTION FOR SH 365 PHASE II: FROM 10/01/2016 TO 4/01/2019



▶ Environmental

- ▶ TXDOT ENV has rendered a Finding of No Significant Impact (FONSI) on 7/3/15
- ## SH 365 PROJECT PROGRESS

▶ Design

- ▶ PS&E on SH 365 Segment 3 (US 281/BSIF) is 100% complete; PS&E on SH 365 Segments 1 and 2 are 95% complete.
- ▶ Geo-technical for SH 365 Segment 3 (US 281) is 100% complete; Geo-technical for SH 365 Segments 1 and 2 are 100% complete.
- ▶ Onsite Hydrologic Studies for SH 365 Segments 1, 2, and 3 are 100% complete.



▶ ROW Mapping / Acquisition

SH 365

▶ Mapping complete (Segments 1 – 4)

PROJECT

▶ Acquisition complete on Seg. 3 (US 281 / BSIF Connector) **PROGRESS**

▶ Acquisition ongoing for Segs. 1 & 2:

▶ ROW Maps and Parcels for Segs. 1 & 2 delivered to ROW team

▶ Appraisals in development

▶ Offers have begun to be made from US 281 to 10th Street (> 55% of project)

▶ Utility Relocations

▶ Utility relocations on Segment 3 are bring finalized

▶ Utility kickoff meetings conducted on Segments 1 & 2

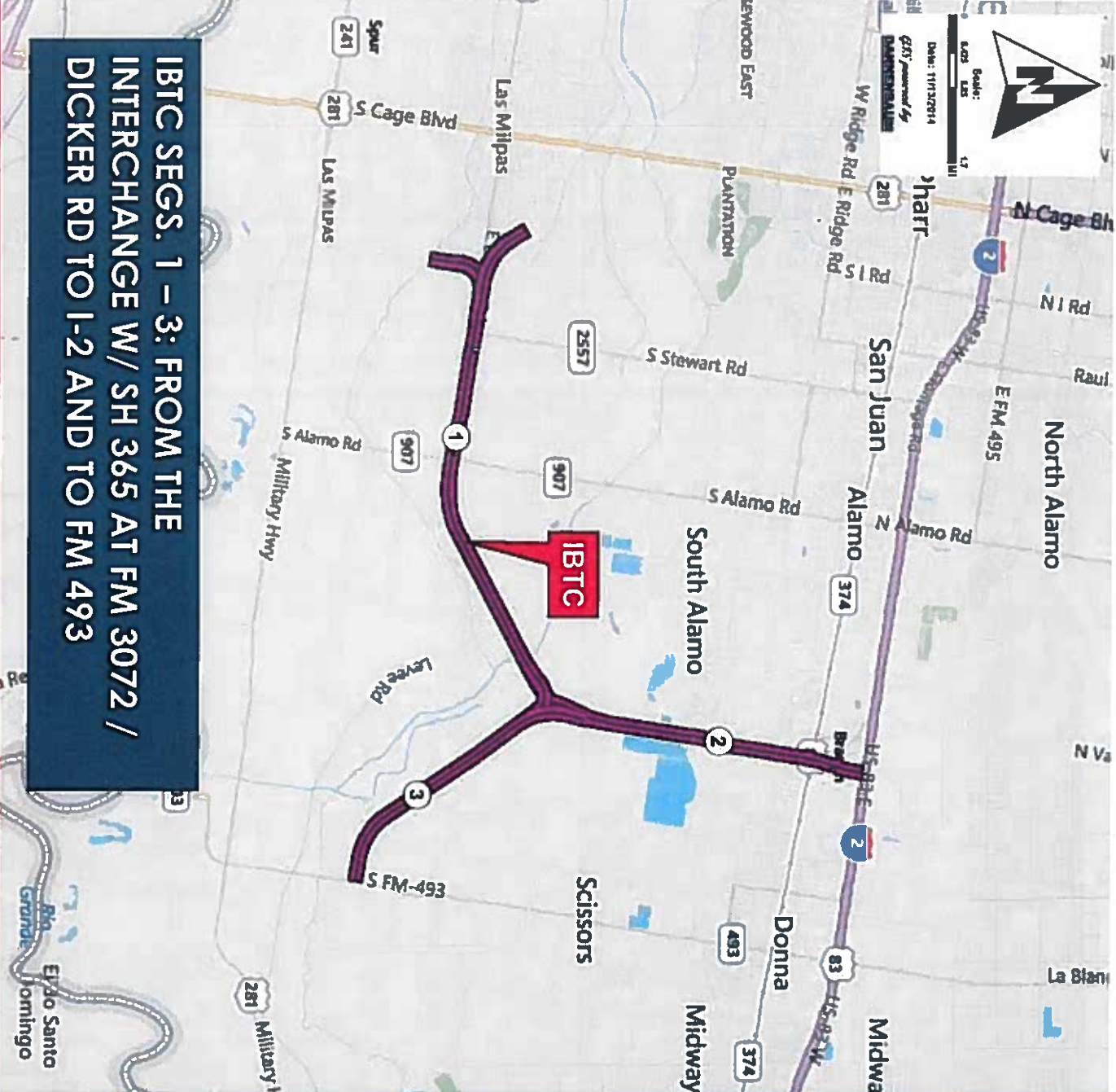


▶ Construction Phase

SH 365 PROJECT PROGRESS

- ▶ SH 365 Seg. 3: US 281 / BSIF Connector:
 - ▶ Bid opening held September 30, 2015
 - ▶ Construction Starts 01/2016
 - ▶ Construction time 20 months
 - ▶ Pending Concurrence from TXDOT on HCRMA selection of Low Bid in order to process Award / move forward with NTP.





IBTC SEGS. 1 - 3: FROM THE INTERCHANGE W/ SH 365 AT FM 3072 / DICKER RD TO I-2 AND TO FM 493

IBTC PROJECT MILESTONES

NEPA CLEARANCE:

08/2016

BID DATE: 03/2017

CONSTR. START:

06/2017

OPENING DATE:

01/2020

10 <http://www.hcrma.net>



HCRMA
HIDALGO COUNTY REGIONAL MOBILITY AUTHORITY

IBTC PROJECT PROGRESS

- ▶ Environmental
 - ▶ NEPA document and fieldwork on hold while HCRMA finalizes SH 365 project financing coordination.
- ▶ Design
 - ▶ PS&E for IBTC Segments 1 - 3 are 40% to 60% complete.
 - ▶ Geo-technical borehole efforts are on pause for IBTC Segments 1-3.
 - ▶ Onsite Hydrologic Studies for IBTC have been reviewed.
 - ▶ Subsurface Utility Exposures are 100% complete.



▪ ROW Mapping

IBTC

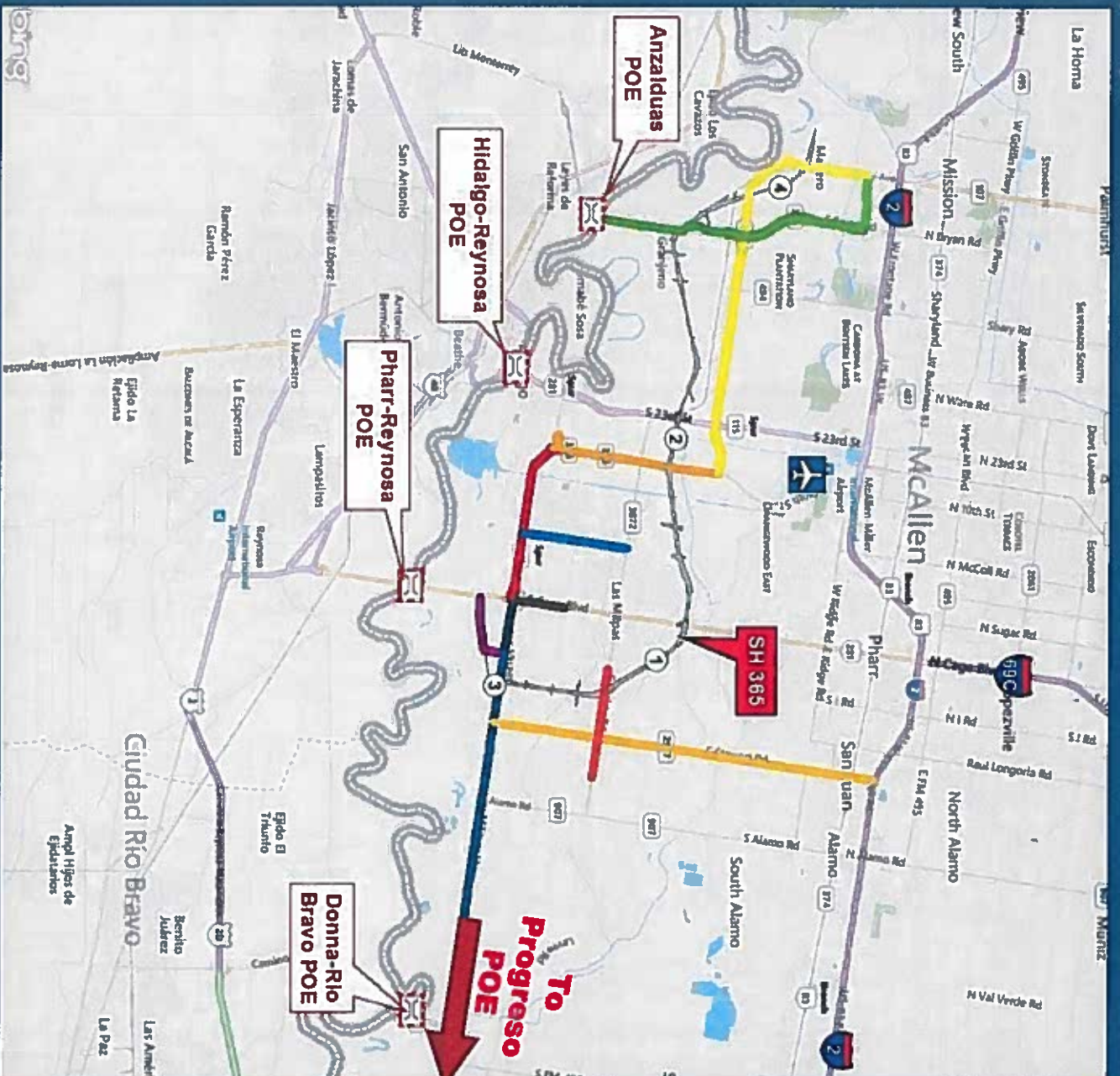
PROJECT PROGRESS

- ▶ Strip map for complete IBTC project is complete for the entire project.

▪ ROW Acquisition

- ▶ All parcels north of Donna Reservoirs have been submitted to the ROW Acquisition Team.
- ▶ Local Easement fro AEP/ETT is nearing completion for the transmission line on the East of the IBTC Project ROW (trans/ line no longer within ROW).



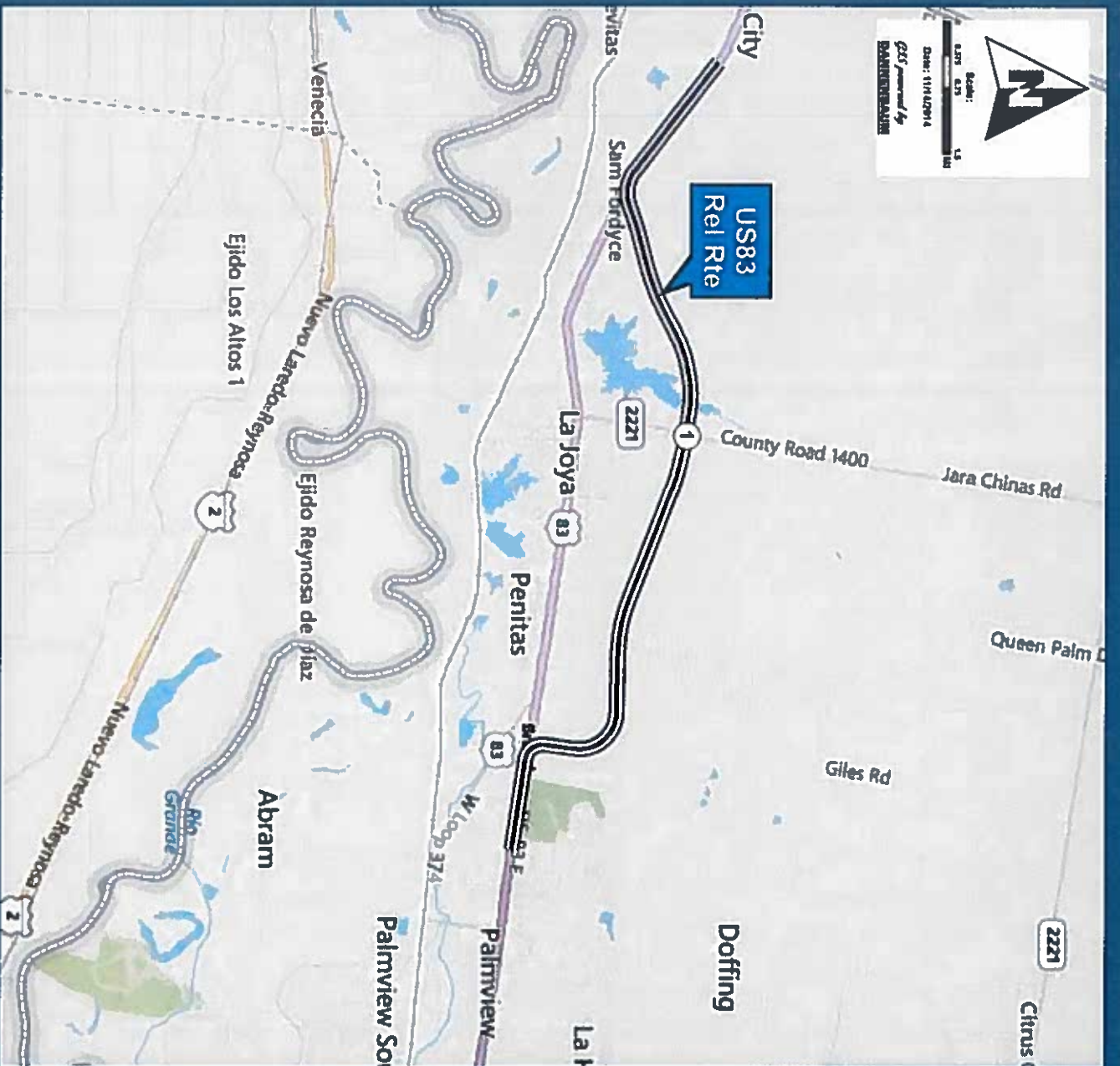


OW/OS CORRIDOR

PERMITTING HIGHLIGHTS:

- ▶ FROM 1/1/2015 TO 11/6/2015 TOTAL PERMITS ISSUED: 12,210
- ▶ TOTAL AMOUNT COLLECTED: \$1,001,479.20
- ▶ Convenience Fees (credit card): \$24,679.20
- ▶ Total Permit Fees: \$976,800.00.
- ▶ Pro Miles Fees: \$36,630.00
- ▶ TXDOT Total: \$830,280.00
- ▶ HCRMA Total: \$109,890.00





US 83 RELIEF ROUTE (BY TXDOT)

DESCRIPTION:

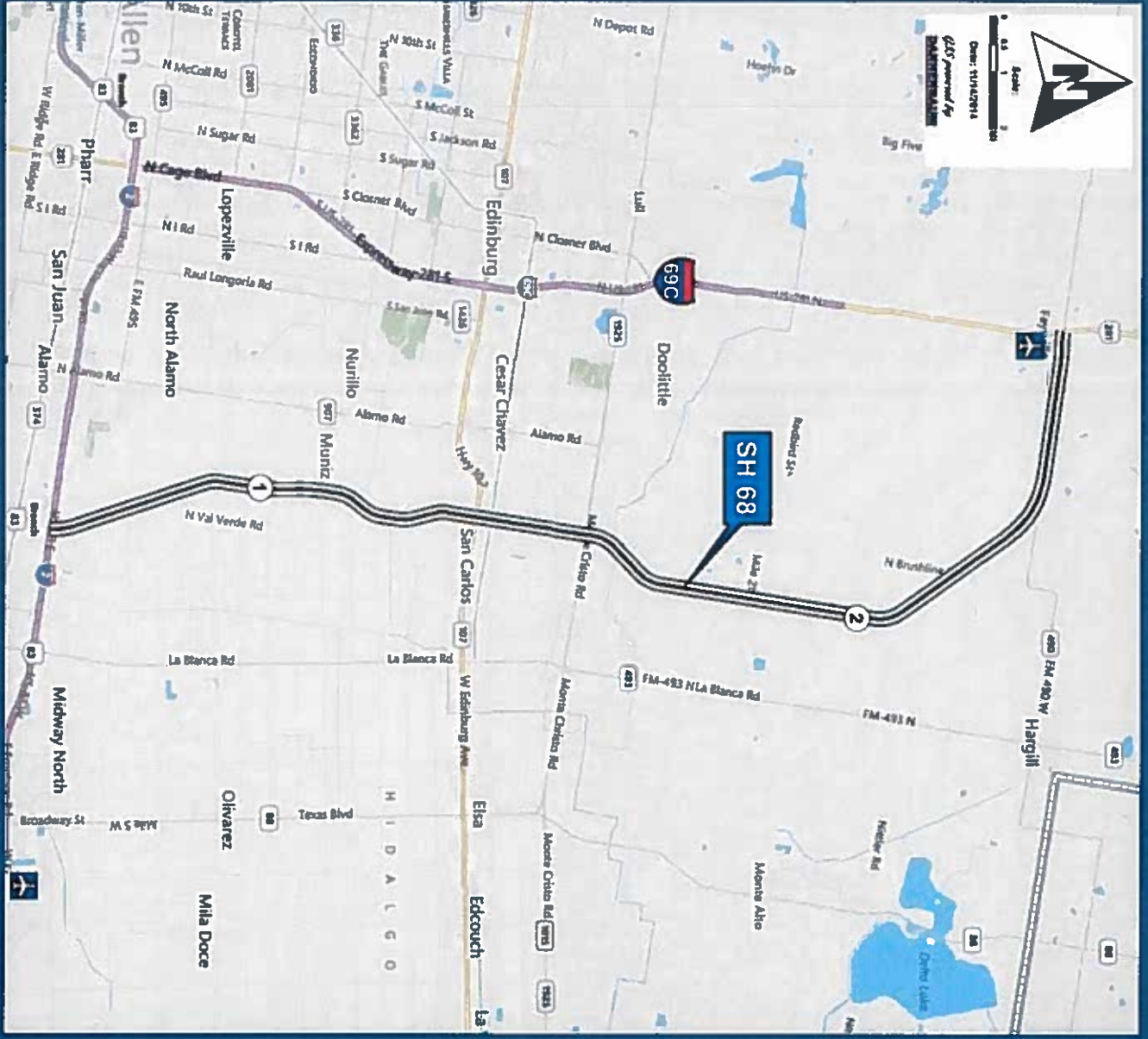
- ▶ PROJECT LENGTH IS APPROX. 8.9 MI
- ▶ FROM 1.0 MI EAST OF FM 886 EAST TO 0.50 MI WEST OF SHOWERS RD
- ▶ PHASE 1 CONSTRUCTION AS FRONTAGE ROADS, LET BY TXDOT 07/2015
- ▶ IF FEASIBLE, FUTURE CONSTRUCTION PHASES MAY INCLUDE OPTION TO BUILD TOLLROAD MAINLANES



SH 68 (BY TXDOT)

DESCRIPTION:

- ▶ PROJECT LENGTH IS APPROX. 22 MI (ALIGNMENT OPTIONS UNDER STUDY)
- ▶ FROM I-2 TO I-69C BETWEEN ALAMO AND DONNA AND RUNS NORTH TO I 69C/US 281 NORTH OF EDINBURG
- ▶ PHASE 1 CONSTRUCTION AS FRONTAGE ROADS UP TO FM 1925, FULLY FUNDED
- ▶ FUTURE CONSTRUCTION PHASES MAY INCLUDE FRONTAGE ROADS FROM FM 1925 TO US 281 AND/OR TOLLROAD MAINLANES (WHERE FEASIBLE)



QUESTIONS?

17 <http://www.hcrma.net>



HCRMA
HIDALGO COUNTY REGIONAL MOBILITY AUTHORITY