

13B

VERITY™

The Future of Elections™



Felice Liston
Director of Sales

Corporate Office
15500 Wells Port Drive
Austin, TX 78728

512.252.6406 • fliston@hartic.com

Fax 512.252.6927
Mobile 512.589.9988
www.hartintercivic.com



The Verity Election Management Lifecycle

Verity sets a new standard in election technology, delivering unique benefits at each stage:

Faster, more intuitive ballot definition and production that saves time and reduces cost

An advanced software platform to streamline end-to-end election management tasks

Flexible election applications to complement certified voting systems

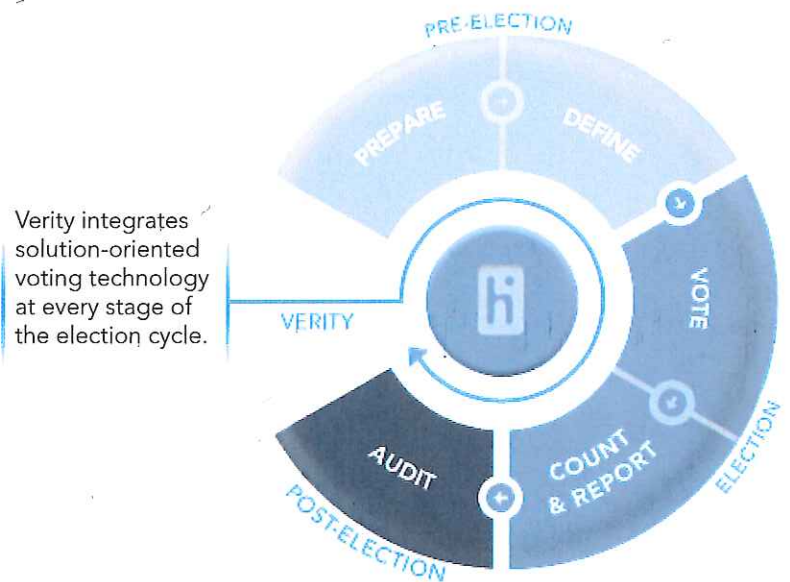
Compact, portable, lightest weight hardware means easy equipment storage, transportation, set-up, and use

Intuitive plain-language ballots result in a more efficient voting process and shorter lines

Up-to to-date adjudication technology results in streamlined ballot resolution

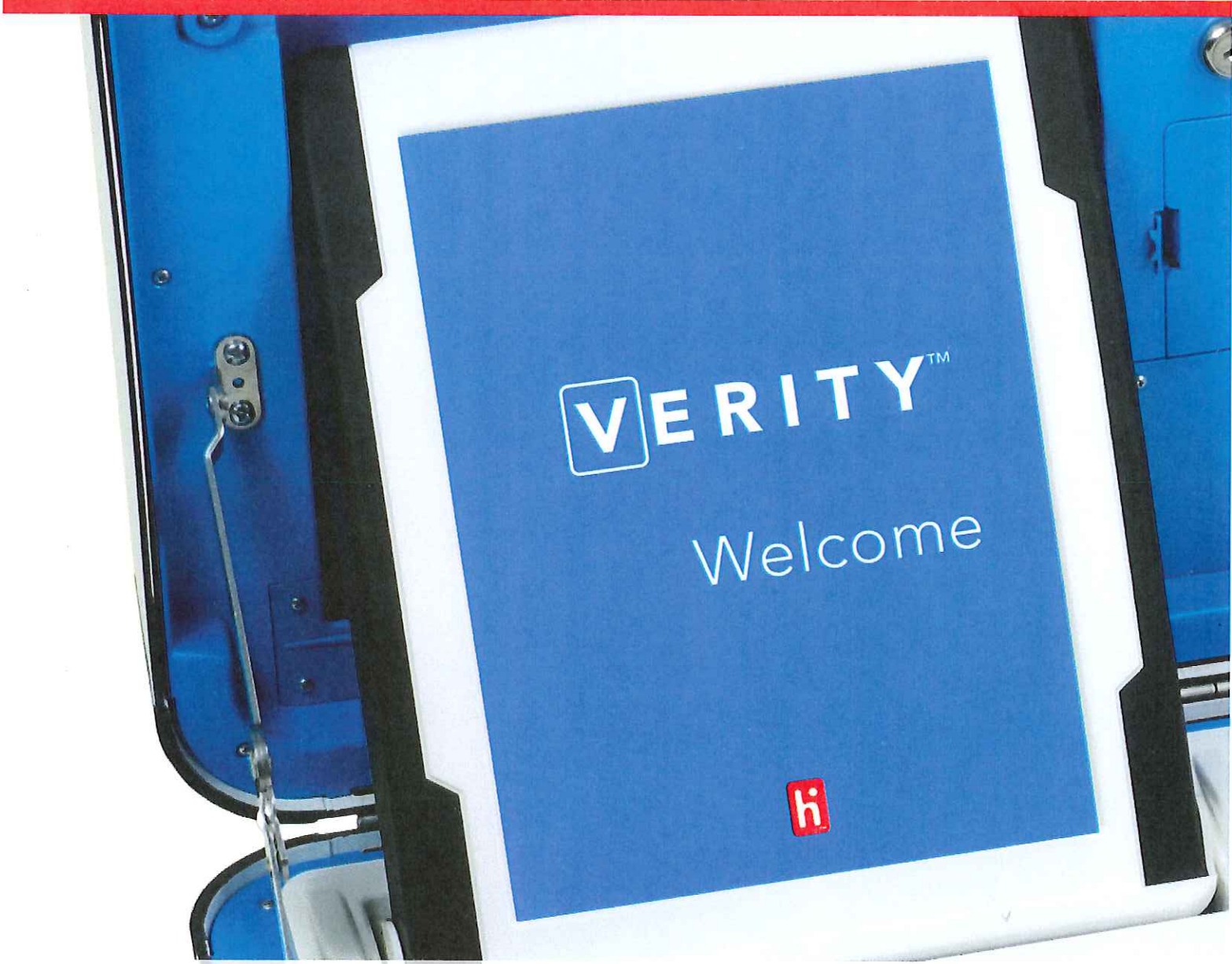
Speedy tabulation software supports fast reporting of results on Election Night, while user friendly dashboards display real-time progress toward completion

Plain-language audit reporting provides transparency into all election operations and results



Verity is the future of elections.

Verity is Hart's brand-new family of election technology. It's the only fully integrated solution designed to exceed the requirements of modern elections.



Verity uses advanced technology to boldly integrate usability, adaptability, and transparency.



What makes Verity the world's most advanced family of election technology?

It's the attention to detail.

The innovation.

The complete election experience.

Verity is uniquely designed to exceed the expectations of the people who will use it, both voters and election officials. Verity showcases new productivity, security, and adaptable device management features.

Every detail of the Verity family of software and hardware ensures long-term performance and reliability – at every stage of the election process – making Verity a smart investment for the future.

Verity instills the utmost confidence that each vote is captured securely and counted accurately, while also ensuring equality of access and privacy for all.

Verity supports any kind of election: precinct paper ballot voting with accessible ballot marking device options; all electronic DRE for vote centers; by-mail; central scanning, and more. Designed to be flexible as your needs change, Verity is the only system on the market using paper-based and electronic voting options on a common 'convertible' hardware platform that lowers overall total cost of ownership.



Scan
digital ballot scanning



Universal Platform, Many Devices
adaptable design protects
your investment



Touch
touch-screen DRE



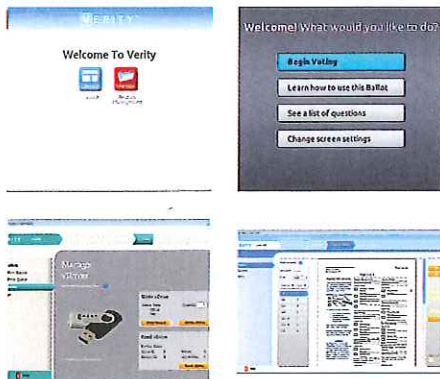
Touch Writer with Access
accessible ballot marking device



Print
on-demand ballot printing



Central
high-speed digital ballot scanning



Election management software

Verity makes election administration and voting easier by providing user-friendly tools that reduce complexity, and streamline productivity.



Collapsible ballot box folds to 5" thin for light, easy portability and storage



Lightweight hardware is easy to store, transport, set-up, and operate



The Future of Elections

Usable | Adaptable | Transparent



Advancing Democracy

800.223.4278

Hart InterCivic is a full service election solutions innovator, partnering with state and local governments to deliver the most secure, accurate and reliable elections.

www.hartintercivic.com

©2014 Hart InterCivic, Inc. Hart InterCivic, Verity and The Future of Elections are trademarks of Hart InterCivic, Inc. All rights reserved.

V1080514



Verity Touch

Electronic Voting



the **only**
all-new DRE

truly paperless with centralized management

Designed for: Early Voting | Election Day | Vote Centers | Central Election Offices



Voters

Simple

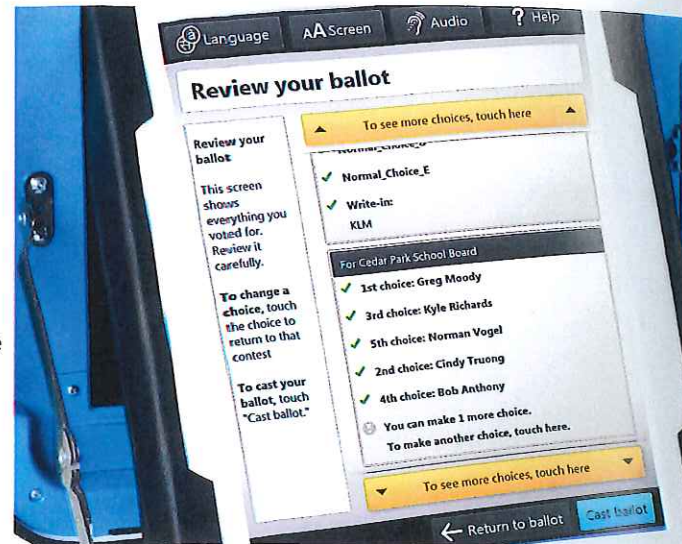
Marking accurate choices is quick and easy with intuitive navigation and plain-language instructions.

Accessible independence for all voters

ADA accessibility with optional Verity Access audio tactile interface (ATI) — minimum buttons and maximum tactile feedback. Voter-adjusted audio and contrast settings, adaptive device compatibility, Braille, curbside voting and much more.

Flexible settings for voter ease

The voter can change the language, text size and screen contrast at any time during the voting process.



Election Managers

Centralized management — fast and easy

With Hart's patented daisy-chain configuration, you can connect up to 12 Verity Touch units. Then with Verity Controller, you manage all from a central console. Set up and open polls in minutes. Close polls on all devices at once. Report totals in just one step. Print results fast at the polling place. Monitor the status of every unit.

Streamlined workflows with a truly paperless system

Even provisional ballots are electronic — no separate ballots to manage.

Redundant storage for data integrity

Cast votes are stored in three physically separate locations.



Poll Workers

Simple transport and setup

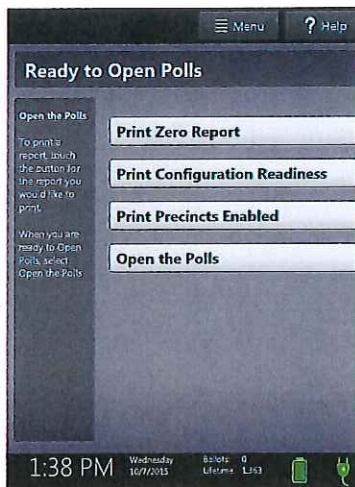
Compact and lightweight, Verity Touch travels easily in ordinary vehicles and is straightforward to set up at the polling place.

Easy to learn and use

Simple, plain-language onscreen instructions and a consistent Verity Voting interface – learn on one device; you easily learn the rest.

Automated ballot style assignment

Automatically access the correct ballot from the electronic poll book, using Verity's optional AutoBallot barcode scanner.



Only Verity uses AIGA Design for Democracy templates; its plain language interface is the easiest to use.

Warehouse Staff

Reduces storage space requirements

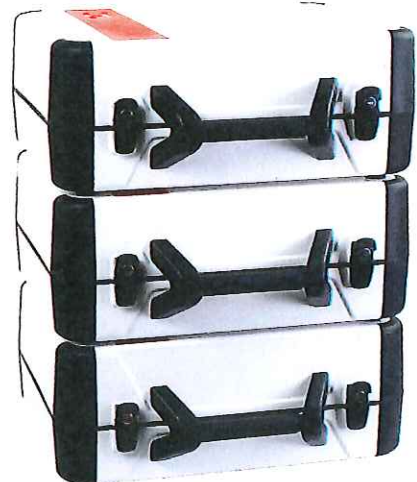
Compact, stackable units that save space in the warehouse.

Fast configuration

With Verity Touch, there's no need to configure individual units – just one Verity Controller for each polling place.

Easy delivery

A small footprint means Verity Touch requires minimal manpower and muscle to deliver.



The ONLY all-new DRE

Built on the best features of Hart's acclaimed eSlate® – and 10+ years smarter – Verity Touch is the only all-new true DRE on the market.



The Future of Elections

Hart InterCivic is a full service election solutions innovator, partnering with state and local governments to deliver the most secure, accurate and reliable elections.

©2016 Hart InterCivic, Inc. Hart InterCivic and Verity are registered trademarks of Hart InterCivic. All rights reserved.



Versatile for long-term value

Verity Touch easily manages hundreds of ballot styles, so you can use it in a variety of voting scenarios. And if your needs change, Verity Touch is right there with you.

Lower total cost of ownership

Compact size saves storage space and reduces transportation costs. Easy setup at the polling place means lower staffing costs. And Verity Touch requires very little maintenance.

Lifecycle longevity

Verity Touch promises many, many years of cost-effective service.