



HIDALGO COUNTY PLANNING DEPARTMENT

1304 SOUTH 25TH STREET
EDINBURG TEXAS 78539
Tel. 956-318-2840 Fax. 956-318-2844

T.J. Arredondo, CFM
Director of Planning

HIDALGO COUNTY COMMISSIONERS COURT MEETING

DATE: 7-06-2016

PROPOSED ELLIS NO. 6 SUBDIVISION, PRECINCT No. 3.

ENGINEER: SALINAS ENGINEERING DEVELOPER: GILBERT W. ELLIS

PRELIMINARY APPROVAL FINAL APPROVAL FINAL APPROVAL WITH FINANCIAL GUARANTEE WITH VARIANCE
NUMBER OF LOTS: 10 *SINGLE FAMILY *MULTI-FAMILY COMMERCIAL INSTITUTIONAL

LOCATION DESCRIPTION: WEST OF DAVIS LANE APPROXIMATELY ¼ MILE NORTH OF MILE 4 ROAD.

SUBDIVISION LIES WITHIN THE: ETJ of MISSION and was approved by the P & Z and City Commission of said City

DRAINAGE REPORT WAS APPROVED BY HCDD#1: ON 07-31-14 PROPERTY LIES WITHIN FLOOD ZONE: "X" AS PER FEMA.

DRAINAGE DESIGN: DRAINAGE WILL BE ACCOMPLISHED WITHIN THE LOW AREAS OF THE LOT AND OUT FALLING INTO A RE-GRADED ROAD SIDE DITCH ALONG DAVIS LANE.

ROAD R.O.W. DEDICATION: NO ROW DEDICATION IS REQUIRED. DAVIS LANE COMPLIES WITH H.C. MPO MAP

H.C.R.O.W. FINAL APPROVAL DATE: 2-23-16 By, VICTOR GALLARDO, PCT 3 R.O.W. AGENT

H.C.H.D APPROVAL DATE: 2-16-16 by: ELIZARDO "CHARDO" RAMOS, Environmental Health Division Manager

SEWER SYSTEM: OSSF HAVE BEEN INSTALLED AND INSPECTED BY HCHD.

WATER SERVICE PROVIDER: N.A.W.S.C. LINE SIZE: 4" LOCATION: EAST SIDE OF DAVIS LANE

H.C.O.E.C. FINAL APPROVAL DATE: 2-12-16: By MARTIN RAMIREZ, Director of Office of Environmental Compliance

SMALL CONSTRUCTION

The applicant has submitted the required small construction site notice as per Part II, Section E of the TPDES General Permit for Construction Activities (TXR150000) along with a copy of the Erosion Control Plan for the proposed project.

PRELIMINARY APPROVAL FROM THE
HIDALGO COUNTY COMMISSIONERS COURT ON: 9/30/2014

REQUEST FOR FINAL APPROVAL WITH: **Cash Deposit:** Amount: \$3,500.00 For: FILLING STATION

STAFF RECOMMENDS: **Preliminary Approval** subject to comments and future recommendations by planning and other departments and the approval of the City of MISSION.

Final Approval subject to recommendations other departments

Final Approval with financial guarantee.

This subdivision plat has been reviewed and complies with the Hidalgo County Subdivision Rules, Texas Water Development Board Model Subdivision Rules and The Texas Local Government Code.

SECOND SHEET

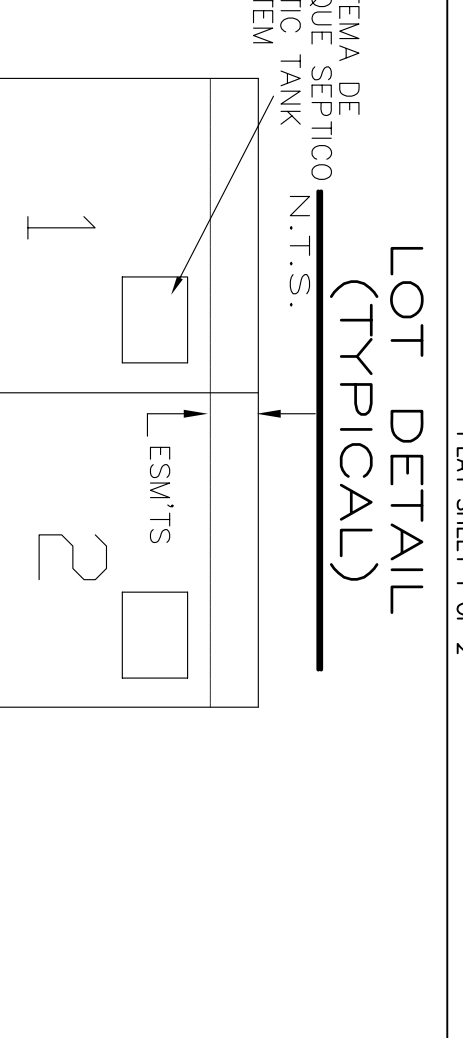
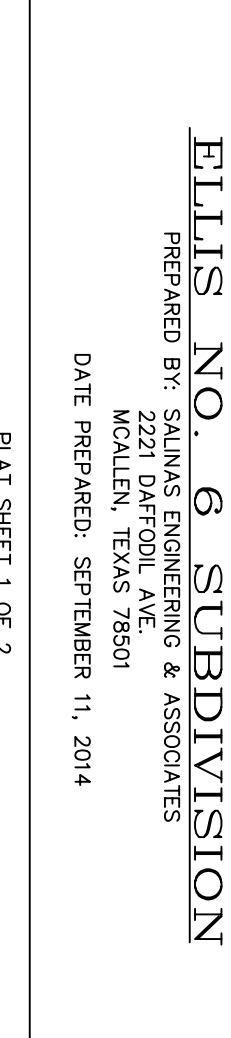
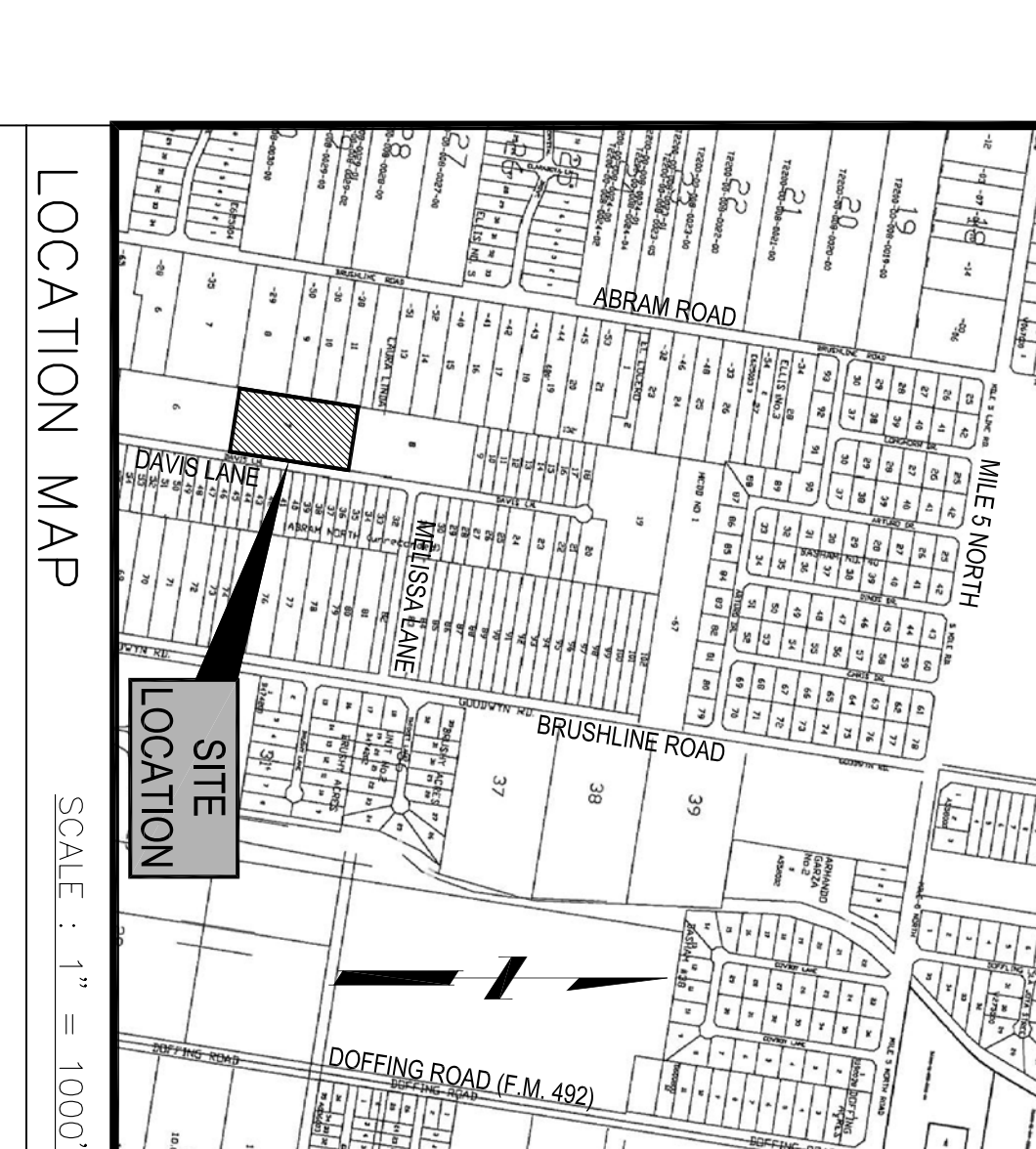
ELLIS NO. 6 SUBDIVISION

HIDALGO COUNTY, TEXAS BEING A 5.01 ACRE TRACT OF LAND, MORE OR LESS, CONSISTING OF ALL OF LOT 7, ABRAM NORTH SUBDIVISION, HIDALGO COUNTY, TEXAS, AS PER THE MAP OR PLAN THEREOF RECORDED IN VOLUME 30, PAGE 152 (1 OF 2).

COST ESTIMATE TABLE with columns for item description and cost. Includes items like FOST ESTIMATE, PLANNING, PERMITS, etc.

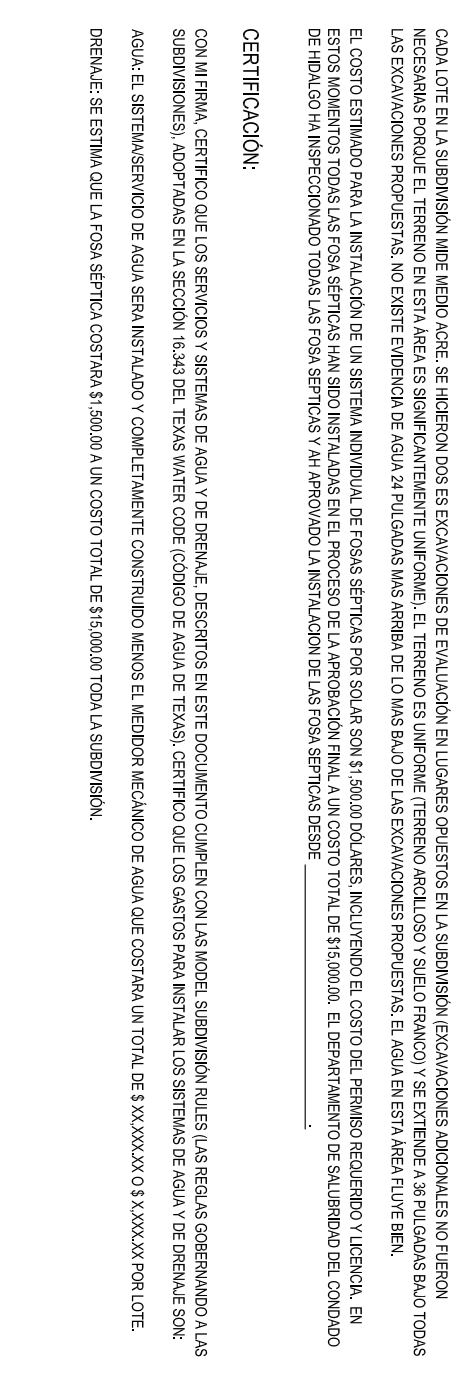
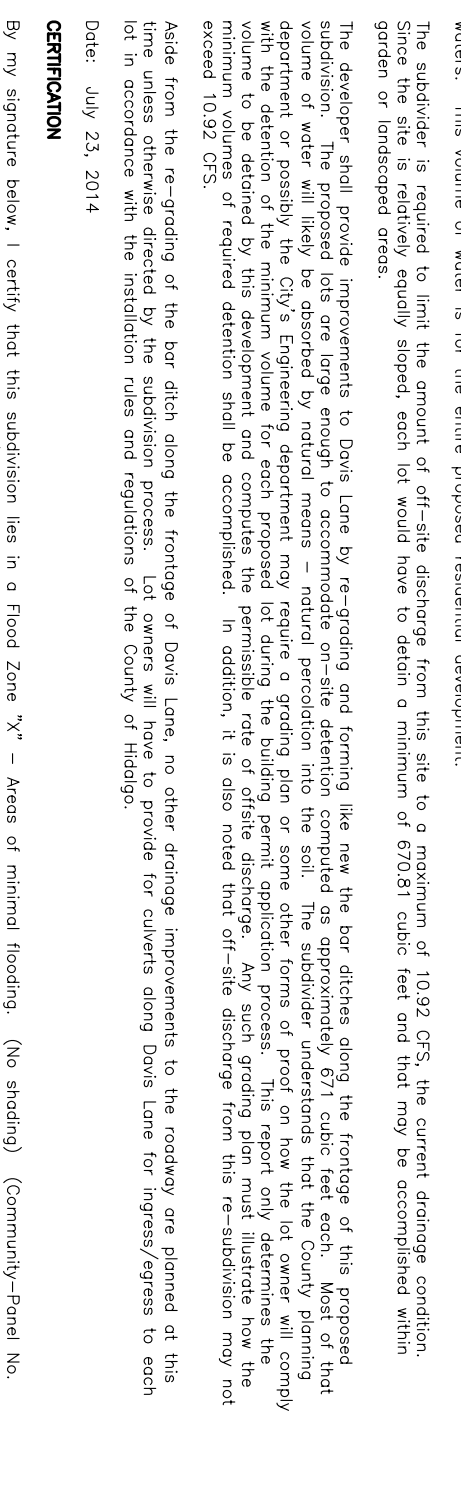
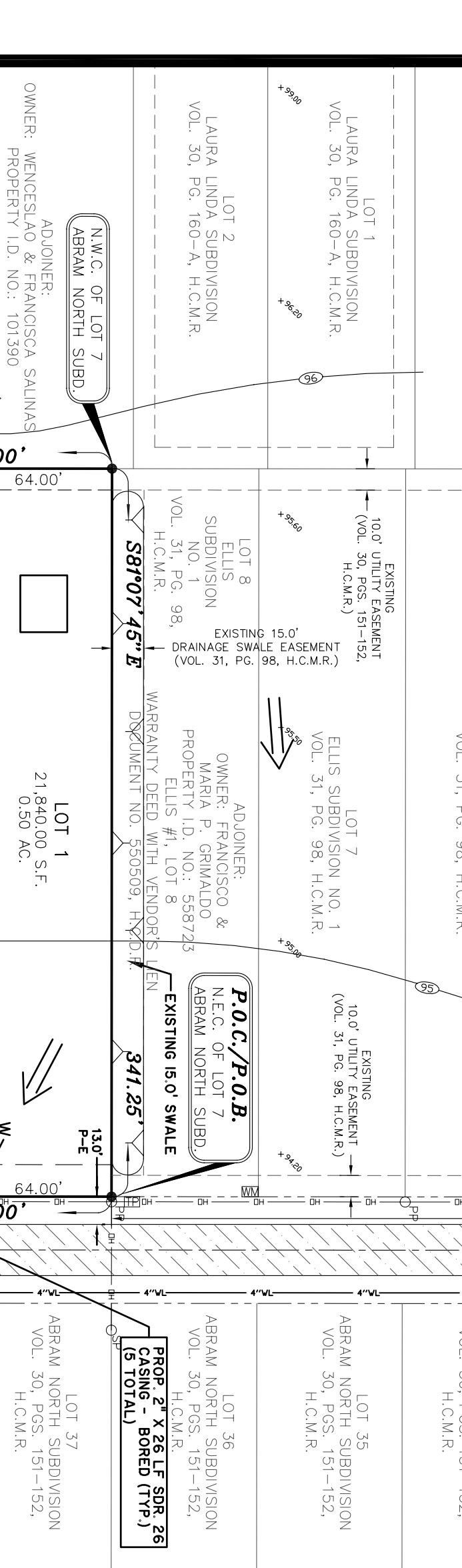
July 23, 2014

FINAL ENGINEERING REPORT FOR ELLIS NO. 6 SUBDIVISION: WATER SUPPLY, SEWERAGE, COST AND OPERABILITY DATA. This report provides a detailed analysis of the water supply and sewerage systems for the subdivision.



REPORT DE AGUA DESCRIPCION, COSTOS Y FECHAS DE INICIO. This section describes the water supply system, including the main line, service lines, and individual house connections.

REPORT DE SEWERS DESCRIPCION, COSTOS Y FECHAS DE INICIO. This section describes the sewerage system, including the main line, service lines, and individual house connections.



REVISION NOTES table with columns for NO., SHEET, REVISION, DATE, and APPROVED.

GENERAL NOTES: 1. ON ALL SERVICE LINES GREATER THAN 12" SCHEDULE 40, A 2" VALVE WILL BE REQUIRED.

INDEX SHEET OF ELLIS NO. 6 SUBDIVISION showing the layout of all sheets in the project.

INDEX SHEET OF ELLIS NO. 6 SUBDIVISION showing the layout of all sheets in the project.

MAP OF WATER DISTRIBUTION, SANITARY SEWER COLLECTION, TOPOGRAPHY, PAVING AND DRAINAGE. This map shows the overall layout of the subdivision, including streets, utilities, and topography.

MAP OF WATER DISTRIBUTION, SANITARY SEWER COLLECTION, TOPOGRAPHY, PAVING AND DRAINAGE. This map shows the overall layout of the subdivision, including streets, utilities, and topography.

MAP OF WATER DISTRIBUTION, SANITARY SEWER COLLECTION, TOPOGRAPHY, PAVING AND DRAINAGE. This map shows the overall layout of the subdivision, including streets, utilities, and topography.

SAINAS ENGINEERING & ASSOCIATES logo and contact information, including address and phone numbers.