



Administration

RFQ

Reports

Shopping Cart

Help

Vendor Contract Information

[Back](#)

Search:

- All
- Vendor Discounts Only
- Catalog Pricing Only

Refine Your Search:

Vendors

Hart InterCivic, Inc.[X]

Price Range

Show all prices

Category

None Selected

Contract

None selected

Vendor Name: Hart InterCivic, Inc.

Address: 15500 Wells Port Drive
Austin, TX 78728

Phone Number: (512) 252-6400

Email: fliston@hartic.com

Federal ID: 95-3248916

Contact: Felice Liston

Accepts RFQs: Yes

Minority Owned Vendor: No

Women Owned Vendor: No

Contract Name: Voting Systems Equipment and Supplies

Contract#: 460-14

Effective Date: 09/01/2014

Expiration Date: 08/31/2017

Payment Terms: Net 30 days

Delivery Days: 30

Shipping Terms: Pre-paid and added to invoice

Freight Terms: FOB Destination

Ship Via: Common Carrier

Region Served: All Texas Regions

States Served: All States

Additional Info: See Extended Exceptions for Voting Systems Advisory. EDGAR Compliance documents can be found under Vendor Documents link below.

Quote Reference Number: 460-14

Return Policy: Unused hardware may be returned within 30 days after receipt.

Additional Searches:

[Search by Vendor](#)

[Browse Contracts](#)

Additional Resources

Contract Documents

Proposal Documents: [Click to view BuyBoard Proposal Documents](#)

Vendor Documents: [Click to view Vendor Proposal Documents](#)

Extended Exceptions: [Click to view Extended Contract Exceptions](#)

Regulatory Notice: [Click to view Bonding Regulatory Notice](#)

Contact us 800-695-2919



Welcome Matilde [Log Off]

Administration

RFQ

Reports

Shopping Cart

Help

Search Results

Search:

- All
- Vendor Discounts Only
- Catalog Pricing Only

Refine Your Search:

Vendors

Hart InterCivic, Inc.[X]

Price Range

Show all prices

Category

None Selected

Contract

None selected

Additional Searches:

[Search by Vendor](#)

[Browse Contracts](#)

Show results

Narrow Results:

Vendor	Description	Pricing Sheet	Price	Qty	Add to Cart
Hart InterCivic, Inc.	1% Discount Off Hart InterCivic Product catalog for Voting Systems Supplies. Line Item 2	Pricing Sheet	\$0.00	<input type="checkbox"/>	Add Show Details
Hart InterCivic, Inc.	1% Discount Off Hart InterCivic Product catalog for Voting Systems Software. Line Item 3	Pricing Sheet	\$0.00	<input type="checkbox"/>	Add Show Details
Hart InterCivic, Inc.	1% Discount Off Hart InterCivic Product catalog for Voting Systems Equipment. Line Item 1	Pricing Sheet	\$0.00	<input type="checkbox"/>	Add Show Details
Hart InterCivic, Inc.	1% Discount Off Hart InterCivic Product catalog (Exception: Annual License & Support Fees are not eligible for discount. These items may be charged at +2% of project cost) for Election/Voting Services. Line Item 4	Pricing Sheet	\$0.00	<input type="checkbox"/>	Add Show Details
Hart InterCivic, Inc.	0% Discount Off Hart InterCivic Product catalog for All Other Voting Systems Related Products. Line Item 5	Pricing Sheet	\$0.00	<input type="checkbox"/>	Add Show Details

Showing 1 to 5 of 5 entries

[First](#) [Previous](#) [1](#) [Next](#) [Last](#)

Additional Resources

Contact us 800-695-2919

Product Name	Category/Description	Product Code	Product Description	List Price
Verity Voting System Products				
Verity Scan	Voting System Equipment	3005350	Precinct-based ballot scanning unit	\$6,100.00
Verity Touch Writer w/ Access	Voting System Equipment	3005352	Ballot marking device with accessibility	\$5,300.00
Canon DR-G1100 Central Scanner	Voting System Equipment	3005436	Central ballot scanner	\$7,500.00
Canon DR-G1130 Central Scanner	Voting System Equipment	3005437	Central ballot scanner	\$10,000.00
Kodak I6500 Central Scanner	Voting System Equipment	3005438	High-volume scanner	\$48,000.00
Okidata B431D Printer w/ Starter Cartridge	Voting System Equipment	3005370	Laser printer for report printing	\$325.00
Okidata C831 Ballot Printer w/ Starter Cartridges	Voting System Equipment	3005433	Ballot printer	\$4,000.00
Okidata C911 Ballot Printer w/ Starter Cartridges	Voting System Equipment	3005434	Ballot printer	\$6,000.00
Okidata ML-1121 Line Printer	Voting System Equipment	3005435	Audit log printer	\$300.00
Verity PC Workstation (HP Z230)	Voting System Equipment	2005340	Workstation for Verity software	\$5,450.00
23" Flat Panel Monitor	Voting System Equipment	1005400	Monitor for use with Verity Workstation	\$350.00
Custom USB Printer Cable	Voting System Related Products	2005311	Custom cable to connect Verity Touch Writer and printer	\$10.00
Daisy Chain Cable	Voting System Related Products	2005312		\$20.00
Verity Power Cord	Voting System Related Products	1005325		\$4.60
Verity Voting Device Battery	Voting System Related Products	1005230		\$110.00
Ethernet Cable	Voting System Related Products	1005015	Rechargeable battery for Verity voting device	\$102.00
Ethernet Switch, 8 Port	Voting System Related Products	1005398		\$20.00
Hard Drive, 1 TB	Voting System Related Products	1005399		\$80.00
Verity Caddy Cover	Voting System Related Products	1005255		\$450.00
Verity Caddy with Casters	Voting System Related Products	2005374	Protective cover for Verity storage caddy	\$250.00
Drum Kit, Okidata B431D, Black	Voting System Supplies	3005375	Storage unit for Verity voting devices; assembly required	\$740.00
Drum Kit, Okidata C831, Black	Voting System Supplies		Drum kit for Okidata B431D printer	\$175.00
Drum Kit, Okidata C911, Black	Voting System Supplies		Drum kit for Okidata C831 printer	\$175.00
Headphone Covers (Box of 100)	Voting System Supplies	1001-660	Drum kit for Okidata C911 printer	\$870.00
Ribbon Cartridge, Printer, ML-1120, OKI	Voting System Supplies	2005431		\$31.50
Thermal Paper Roll (White)	Voting System Supplies	1003705		\$20.00
Toner Cartridge, Okidata B431D, Black	Voting System Supplies	2005430	Paper roll for voting unit	\$0.66
Toner Cartridge, Okidata C831, Black	Voting System Supplies	2005420	Black toner for Okidata B431D printer	\$165.00
Toner Cartridge, Okidata C831, Cyan	Voting System Supplies	2005421	Black toner for Okidata C831 printer	\$130.00
Toner Cartridge, Okidata C831, Magenta	Voting System Supplies	2005422	Cyan toner for Okidata C831 printer	\$300.00
Toner Cartridge, Okidata C831, Yellow	Voting System Supplies	2005423	Magenta toner for Okidata C831 printer	\$300.00
Toner Cartridge, Okidata C911, Black	Voting System Supplies	2005424	Yellow toner for Okidata C831 printer	\$300.00
Toner Cartridge, Okidata C911, Cyan	Voting System Supplies	2005425	Black toner for Okidata C911 printer	\$130.00
Toner Cartridge, Okidata C911, Magenta	Voting System Supplies	2005426	Cyan toner for Okidata C911 printer	\$515.00
Toner Cartridge, Okidata C911, Yellow	Voting System Supplies	2005427	Magenta toner for Okidata C911 printer	\$515.00
vDrive	Voting System Supplies	1005324	Yellow toner for Okidata C911 printer	\$515.00
Accessible Booth Transport Bag	Voting System Supplies	1005169	Flash memory card/audio card for use with Verity devices	\$66.00
Ballot Box Transport Bag	Voting System Supplies	1005173		\$85.00
Corrugated Plastic Transfer Case for Printer	Voting System Supplies	1005397	Case used for shipping and warehouse transfer	\$60.00
Corrugated Plastic Transfer Case for UPS	Voting System Supplies	1005396		\$55.00
Corrugated Plastic Transfer Case for Verity Voting Device	Voting System Supplies	1005395	Case used for shipping and warehouse transfer	\$70.00
Headphones with Microphone	Voting System Supplies	2001-656	Headphones w/ microphone for voice recording	\$40.00
Jelly Switches	Voting System Supplies	1001-364	Low-impact input switches for accessible units	\$183.70
Printer Stand	Voting System Supplies	3005376	Small table for printer	\$50.00
Privacy Screen (Black)	Voting System Supplies	1005161		\$15.00
Scan Calibration Kit	Voting System Supplies	1003496	Kit to calibrate and test scanning speed of precinct scanner	\$34.00
Standard Booth Transport Bag	Voting System Supplies	1005172		\$60.00
Uninterruptible Power Supply (UPS) for Printer	Voting System Supplies	3005362	UPS for printer accompanying Verity Touch Writer	\$725.00
Verity Accessible Booth w/ Transport Bag and Privacy Screens	Voting System Supplies	3005359	Wheelchair-accessible voting booth for Verity Touch w/ Access	\$430.00
Verity Ballot Box Carton	Voting System Supplies	1005336		\$30.00
Verity Ballot Box w/ Transport Bag and Privacy Screens	Voting System Supplies	3005357	Ballot box for use with Verity Scan	\$535.00
Verity Battery Charger, 1 Bay	Voting System Supplies	3005360	1-bay charger for Verity voting device battery	\$185.00
Verity Battery Charger, 6 Bay	Voting System Supplies	3005365	Battery charger for Verity unit	\$540.00
Verity Build Dimensional Overlays	Voting System Supplies	2005342	Provide quality assurance for ballot printing	\$110.00
Verity Headphones	Voting System Supplies	2005320	Headphones for Verity accessible units	\$20.00
Verity Key	Voting System Supplies	3005361	Electronic security token	\$109.00
Verity Standard Booth w/ Transport Bag and Privacy Screens	Voting System Supplies	3005358	Standard voting booth for Verity Touch	\$430.00
Hart Voting System Products				
DAU eSlate	Voting System Equipment	1001-767-DG	Disabled access voting unit	\$ 3,960.00
DAU eSlate, used	Voting System Equipment	1001-767-U	Disabled access voting unit, used	\$ 2,860.00
eScan	Voting System Equipment	1001-695	Precinct-based scanning unit	\$ 5,940.00
eScan, used	Voting System Equipment	1001-695-U	Precinct-based scanning unit, used	\$ 3,960.00
eSlate	Voting System Equipment	1001-800-DG	Electronic voting unit	\$ 3,300.00
eSlate, used	Voting System Equipment	1001-800-U	Electronic voting unit, used	\$ 2,200.00
JBC - used	Voting System Equipment	1001-900-DG	Controller for eSlate polling place equipment	\$ 3,300.00
Del Latitude D630 Notebook (Refurbished)	Voting System Equipment	1001-900-U	Controller for eSlate polling place equipment, used	\$ 2,200.00
Del OptiPlex XE2 PC	Voting System Equipment	COMP-DELL D630-R	Windows 2000 laptop configured with HVS software	\$ 2,500.00
Del OptiPlex 745 (Refurbished)	Voting System Equipment	COMP-DELL XE2 N10M0N	Windows 7 PC configured with HVS software	\$ 2,800.00
Epson LQ-590 Line Printer	Voting System Equipment	COMP-OPTIPLEX 745-R	Windows 2000 PC configured with HVS software	\$ 2,800.00
Okidata C9650dn Ballot Printer	Voting System Equipment	COMP-PRINTER-LQ590	Log printer	\$ 400.00
Kodak I660 Central Scanner, used	Voting System Equipment	COMP-PRINTER-OKI9650	Laser printer for HVS software on Windows 2000 or Windows 7 PC	\$ 4,040.00
Kodak I610 Central Scanner, used	Voting System Equipment	COMP-SCANNER-I660-U	High-volume scanner	\$ 12,800.00
Okidata B432dn Printer w/ Starter Cartridge	Voting System Equipment	3005371	Laser printer for report printing	\$ 6,035.00
HP LaserJet M806dn Ballot Printer	Voting System Equipment	3005371	Laser printer for report printing	\$ 450.00
DAU Booth, used	Voting System Equipment	1001-673-U	Laser printer for HVS software on Windows 7 PC	\$ 4,755.00
24" Flat Panel Monitor	Voting System Equipment	1001-673-U	Wheelchair-accessible voting booth for DAU eSlate, used	\$ 560.00
eScan Ballot Box	Voting System Equipment	1003376	40" monitor for use with PCs running Hart software	\$ 40.00
Hard-panel eSlate Booth, used	Voting System Equipment	1001-300-U	Ballot box for use with eScan	\$ 800.00
eSlate Booth	Voting System Equipment	1001-670	Standard voting booth for eSlate, used	\$ 280.00
eScan Ballot Box, used	Voting System Equipment	1003376-U	Standard voting booth for eSlate	\$ 895.00
DAU Booth	Voting System Equipment	1001-673	Ballot box for use with eScan, used	\$ 490.00
Hart ePollBook Kit (TX)	Voting System Related Products	1003920	Wheelchair-accessible voting booth for DAU eSlate	\$ 895.00
M&A CT14 Netbook for Hart ePollBook	Voting System Related Products	1003920	Includes netbook, driver's license card scanner, label printer with 2 label rolls, and carrying case.	\$ 1,500.00
Brother QL-700 Label Printer	Voting System Related Products	1003557-QL700	Netbook with ePollBook software pre-loaded	\$ 1,000.00
Driver's License Card Scanner	Voting System Related Products	1003560	Prints voter's name, address, and precincts for check-in	\$ 200.00
USB Handheld 1D Barcode Scanner	Voting System Related Products	1003561	Driver's license scanner	\$ 100.00
USB Handheld 2D Barcode Scanner	Voting System Related Products	1003672	Used to scan voter's ID from Voter Registration Card	\$ 200.00
16GB Memory Card	Voting System Related Products		Scanner for voter registration cards and drivers licenses	\$ 390.00
8GB Memory Card	Voting System Related Products			\$ 20.00
Signature Capture Pad	Voting System Related Products	1003624		\$ 20.00
Carrying Case with Foam Inserts	Voting System Related Products	1003574	Durable hard-sided case that holds a netbook, handheld scanner, driver's license card scanner, label printer, and spare labels	\$ 200.00
2GB Memory Card	Voting System Related Products	1003583		\$ 12.00
4GB Memory Card	Voting System Related Products	1003737		\$ 20.00
Battery Tester, JBC/eSlate/DAU	Voting System Related Products	2001-598		\$ 238.00
eScan Tamper Evident Storage Box	Voting System Related Products	1003357		\$ 75.00
HVS Privacy Screen	Voting System Related Products	2001-060		\$ 48.40
Lock Repair Kit for Ballot Box Cover	Voting System Related Products	1003320		\$ 48.00
eScan Shipping Box - Cardboard	Voting System Related Products	1001-334		\$ 48.00
JBC Shipping Box - Cardboard	Voting System Related Products	1001-440		\$ 48.00
Equipment Stand for JBC and Demo eSlate	Voting System Related Products	1003338		\$ 23.60
eScan Privacy Shield	Voting System Related Products	1003309		\$ 14.00
Media Storage Tray for MBBS	Voting System Related Products	1003291		\$ 9.00
ACOD RS232 Hand Held 2D Image Scanner w/ Power Supply	Voting System Related Products	1003673	Scanner for Access Code On-Demand	\$ 405.00
eSlate Storage Caddy III	Voting System Related Products	000295	Slide load style, holds up to 8 booths	\$ 931.00
eSlate Storage Caddy III Casters	Voting System Related Products	000304	Casters for eSlate Storage Caddy (set of 4)	\$ 135.00
PC Card Reader/Writer	Voting System Related Products	1003007	Flash memory card reader/writer	\$ 283.00
Storage and Transport Box for JBC	Voting System Related Products	1001-913	Reinforced, padded plastic box for storage and stacking	\$ 60.50
eSlate Cryptographic Module (eCM)	Voting System Related Products	1001-657	Electronic security token	\$ 120.00
eSlate Booth, used	Voting System Related Products	1001-670-U	Standard voting booth for eSlate, used	\$ 560.00
Headphones for DAU eSlate	Voting System Related Products	1001-275	Headphones for DAU eSlate	\$ 20.25
PC Card Reader/Writer, used	Voting System Related Products	1003007-U	Flash memory card reader/writer, used	\$ 147.00

Old 2016

Hart InterCivic, Inc.
BuyBoard Contract No. 460-14 Voting Systems Equipment and Supplies

Product Name	Category/Description	Product Code	Product Description	List Price
eSlate Storage Caddy III, used	Voting System Related Products	000295-U	Side load style, holds up to 8 booths (used)	\$ 450.00
eSlate Cryptographic Module (eCM), used	Voting System Related Products	1001-657-U	Electronic security token, used	\$ 62.00
Headphones for DAU eSlate, used	Voting System Related Products	1001-275-U	Headphones for DAU eSlate, used	\$ 12.00
17" Flat Panel Monitor	Voting System Related Products	COMP-MONITOR-17IN	17" monitor for use with PCs running Hart software	\$ 200.00
Hard-panel DAU Booth, used	Voting System Related Products	1001-303-U	Wheelchair-accessible voting booth for DAU eSlate, used	\$ 280.00
UPS, 850W	Voting System Related Products	1002-790	850W backup power supply	\$ 635.00
Tape, Red ID for eSlate/DAU Booth	Voting System Related Products	1001-408		\$ 1.80
Ballot Now Dimensional Overlays	Voting System Related Products	1003445		\$ 110.00
Mobile Ballot Box (MBB)	Voting System Related Products	1003520	Flash memory card/audio card for use with Hart voting equipment	\$ 66.00
Jelly Switches, used	Voting System Related Products	1001-364-U	Low-impact input switches for accessible units, used	\$ 123.20
Quatech Card and Cable	Voting System Related Products	COMP-QUATECH CARD	Quatech card and cable for use with SERVO	\$ 182.00
Label Printer Paper Roll (1 1/2" x 100')	Voting System Supplies	1003359		\$ 13.00
Label Printer Paper Roll (2.4" x 100')	Voting System Supplies	1003728		\$ 29.00
Label Printer Paper Roll (2.1" x 100')	Voting System Supplies	1003726		\$ 24.00
Thermal Paper Roll (White)	Voting System Supplies	1003705	Paper roll for voting unit	\$ 0.66
Thermal Paper Roll (Pink)	Voting System Supplies	1001-668		\$ 0.99
Thermal Paper Roll (Green)	Voting System Supplies	1001-617		\$ 0.99
Toner Cartridge, Okidata B432D, Black	Voting System Supplies		Black toner for Okidata B432D printer	\$ 165.00
Cable - JBC to First eSlate	Voting System Supplies	1001-714		\$ 115.00
Crossover Cable	Voting System Supplies	COMP-CABLE-CROSSOVER	Cable for SERVO connection to eScan	\$ 38.50
Hard-panel Privacy Screens (Set of 2), used	Voting System Supplies	1001-300-U	Pair of hard-panel privacy screens for eSlate or DAU booth, used	\$ 30.00
Cable - eSlate to eSlate Daisy Chain	Voting System Supplies	1001-713		\$ 126.00
eScan Power Supply, External	Voting System Supplies	1003087		\$ 118.00
Leg Left Rear for eSlate Booth	Voting System Supplies	1000403		\$ 90.75
Leg Left Rear for DAU Booth	Voting System Supplies	1000405		\$ 90.75
Leg Right Rear for eSlate Booth	Voting System Supplies	1000404		\$ 78.65
Leg Right Rear for DAU Booth	Voting System Supplies	1000406		\$ 78.65
Leg Left Front for eSlate Booth	Voting System Supplies	1003057		\$ 60.50
Leg Right Front for eSlate Booth	Voting System Supplies	1003058		\$ 60.50
Leg Left Front for DAU Booth	Voting System Supplies	1003059		\$ 60.50
Leg Right Front for DAU Booth	Voting System Supplies	1003060		\$ 60.50
Parallel Cable - PC to JBC	Voting System Supplies	COMP-A/B Parallel		\$ 49.00
Booth Foot	Voting System Supplies	1003067		\$ 42.35
Booth Leg Extension Straight	Voting System Supplies	1003065		\$ 36.30
JBC Battery Key with Captive Chain	Voting System Supplies	1001-540		\$ 24.20
Lid - Storage Compartment in Booth	Voting System Supplies	000254		\$ 16.50
eSlate/DAU Battery Cover	Voting System Supplies	1001-144		\$ 13.40
Keyed Lock for Ballot Box Cover	Voting System Supplies	1003073		\$ 10.30
JBC Fuse (5-pack)	Voting System Supplies	1001-172		\$ 7.90
JBC Paper Roll Spindle	Voting System Supplies	1001-201		\$ 7.00
JBC Shipping Box Handle	Voting System Supplies	1001-509		\$ 4.50
Port Connector Guide, Booth	Voting System Supplies	1001-906		\$ 3.65
Leg Button - Spring-loaded Button Replacement	Voting System Supplies	1001-827		\$ 3.65
Jackscrow Male/Female, Long	Voting System Supplies	1001-848	For booth port connection.	\$ 3.65
Velcro Booth Strap, 7.5"	Voting System Supplies	1001-818		\$ 3.50
Booth Replacement Latch	Voting System Supplies	1001-821		\$ 3.50
Port Connector Guide - Red "Booth Out" for JBC to First eSlate Cable	Voting System Supplies	1001-904		\$ 3.20
Port Connector Guide, eSlate/DAU - Black	Voting System Supplies	1001-905		\$ 3.15
Brass Mounting Post for non-VBO Booth	Voting System Supplies	1001-285		\$ 3.15
Hinge Support Arm	Voting System Supplies	1001-706	Hinge arm for eSlate booth	\$ 18.30
JBC Case Bottom	Voting System Supplies	1001-507-DG		\$ 131.45
Cable - eSlate to eSlate Daisy Chain w/ Mounting Hardware	Voting System Supplies	1001-805		\$ 126.00
Cable - Pigtail, Internal Booth to eSlate or DAU	Voting System Supplies	1001-579		\$ 75.00
eScan Power Supply Board	Voting System Supplies	1001-688		\$ 200.00
Battery Pack (White), JBC/eSlate/DAU	Voting System Supplies	2001-596		\$ 30.25
JBC/eScan Power Card	Voting System Supplies	2001-495		\$ 4.60
Battery Pack (Black), JBC/eSlate/DAU	Voting System Supplies	2001-592		\$ 63.00
Velcro Booth Strap, 3.8"	Voting System Supplies	1001-168		\$ 2.50
JBC Shipping Box Handle Backer	Voting System Supplies	1001-510		\$ 2.45
Privacy Screen Clip	Voting System Supplies	1001-708		\$ 1.25
Curtain Retainer	Voting System Supplies	1001-710		\$ 1.25
Jackscrow Male/Female, Short	Voting System Supplies	1001-213		\$ 0.50
Engineering Services (Hourly)	Election/Voting Services			\$ 250.00
eSlate-to-DAU Conversion	Election/Voting Services		Conversion of eSlate units to DAU/eSlate units	\$ 660.00
New Implementation Services (Daily)	Election/Voting Services			\$ 2,000.00
Preventative Maintenance at Hart - JBC	Election/Voting Services		Preventative maintenance for JBC performed at Hart headquarters	\$ 100.00
Preventative Maintenance - eScan	Election/Voting Services			\$ 100.00
Preventative Maintenance - JBC	Election/Voting Services			\$ 50.00
Preventative Maintenance - Kodak 3520 (Zone 1-2)	Election/Voting Services		Preventative maintenance for Kodak 3520 series scanner, consumables	\$ 1,694.00
Preventative Maintenance - Kodak 3520 (Zone 3)	Election/Voting Services		Preventative maintenance for Kodak 3520 series scanner, consumables	\$ 2,002.00
Preventative Maintenance - Kodak iS200 (Zone 1-2)	Election/Voting Services		Preventative maintenance for Kodak iS200 series scanner, consumable	\$ 1,814.00
Preventative Maintenance - Kodak iS200 (Zone 3)	Election/Voting Services		Preventative maintenance for Kodak iS200 series scanner, consumable	\$ 2,122.00
Preventative Maintenance - Kodak iS600 (Zone 1-2)	Election/Voting Services		Preventative maintenance for Kodak iS600 series scanner, consumable	\$ 1,814.00
Preventative Maintenance - Kodak iS600 (Zone 3)	Election/Voting Services		Preventative maintenance for Kodak iS600 series scanner, consumable	\$ 2,122.00
Preventative Maintenance - Kodak i600 (Zone 1-2)	Election/Voting Services		Preventative maintenance for Kodak i600 series scanner, consumables	\$ 1,702.00
Preventative Maintenance - Kodak i600 (Zone 3)	Election/Voting Services		Preventative maintenance for Kodak i600 series scanner, consumables	\$ 2,009.00
Preventative Maintenance - Kodak i800 (Zone 1-2)	Election/Voting Services		Preventative maintenance for Kodak i800 series scanner, consumables	\$ 3,738.00
Preventative Maintenance - Kodak i800 (Zone 3)	Election/Voting Services		Preventative maintenance for Kodak i800 series scanner, consumables	\$ 3,431.00
Professional Services (Daily)*	Election/Voting Services		Additional travel charges apply based on customer location	\$ 1,250.00
Hart ePollBook Services	Election/Voting Services		Creation of ePollBook database files	\$ 500.00
Technical Services (Hourly)	Election/Voting Services			\$ 250.00
Training at Hart (Daily)	Election/Voting Services		Training classes to be held at Hart HQ in Austin, TX	\$ 725.00
Webinar Training	Election/Voting Services		Training delivered via webinar	\$ 400.00
Annual License and Support Fee	Election/Voting Services			Variable, dependent upon equipment and software configuration

*Election Day Support is a 2-day minimum.

Software License: Software License Name	<10,000 Registered Voters	10,000-49,999 Registered Voters	50,000-249,999 Registered Voters
Verity Build - Client	\$3,750.00	\$7,500.00	\$10,000.00
Verity Build - Server	\$15,000.00	\$30,000.00	\$40,000.00
Verity Central - Client	\$4,375.00	\$8,750.00	\$12,500.00
Verity Central - Server	\$17,500.00	\$35,000.00	\$50,000.00
Verity Count	\$6,000.00	\$12,000.00	\$12,000.00
Hart Voting System Access Code On-Demand	\$ 5,000.00	\$ 7,500.00	\$ 10,000.00
Hart Voting System Absentee Processing System (Networked)	\$ 15,000.00	\$ 20,000.00	\$ 25,000.00
Hart Voting System Ballot Now	\$ 35,000.00	\$ 50,000.00	\$ 60,000.00
Hart Voting System Ballot Now Lite	\$ 12,000.00	\$ 17,000.00	\$ 20,000.00
Hart Voting System BOSS	\$ 30,000.00	\$ 40,000.00	\$ 50,000.00
Hart Voting System FUSION	\$ 5,000.00	\$ 5,000.00	\$ 5,000.00
Hart Voting System InFUSION	\$ 10,000.00	\$ 10,000.00	\$ 10,000.00
Hart Voting System Rally	\$ 5,000.00	\$ 5,000.00	\$ 5,000.00
Hart Voting System SERVO	\$ 4,000.00	\$ 4,000.00	\$ 5,000.00
Hart Voting System Talley	\$ 12,000.00	\$ 12,000.00	\$ 15,000.00
Hart Voting System Absentee Processing System (Non-networked)	<25K Registered Voters \$ 5,000.00	50K-100K Registered Voters	>100K Registered voters
Hart ePollBook	1-50 Seats \$ 575.00	51-100 Seats \$ 515.00	101-500 Seats \$ 465.00 501-1000 Seats \$ 415.00 1000+ Seats \$ 370.00

all
2016

Quote Item	Status	Product Code	List Price	BuyBoard Contract % Off
Verity Controller	in certification*			
AutoBallot Kit	in certification*			
Verity Touch	in certification*			
Verity Standard Booth	BuyBoard Contract No. 460-14	3005358	\$ 430.00	1%
Verity Touch w/ Access	in certification*			
Verity Accessible Booth	BuyBoard Contract No. 460-14	3005359	\$ 430.00	1%
Jelly Switches	BuyBoard Contract No. 460-14	1001-364	\$ 183.70	1%
vDrive	BuyBoard Contract No. 460-14	1005324	\$ 66.00	1%
Verity Key	BuyBoard Contract No. 460-14	3005361	\$ 109.00	1%
Verity Build	BuyBoard Contract No. 460-14		\$ 50,000.00	1%
Verity Build Dimensional Overlays	BuyBoard Contract No. 460-14		Incl w/ Build	1%
Verity Count	BuyBoard Contract No. 460-14		\$ 15,000.00	1%
Verity Central - Server	BuyBoard Contract No. 460-14		\$ 60,000.00	1%
Canon DR-G1130 Central Scanner	BuyBoard Contract No. 460-14	3005437	\$ 10,000.00	1%
Ethernet Switch, 8 Port	BuyBoard Contract No. 460-14	1005399	\$	1%
Verity Workstation	BuyBoard Contract No. 460-14	2005340	\$ 5,450.00	1%
23" Flat Panel Monitor	BuyBoard Contract No. 460-14	1005400	\$ 350.00	1%
Okidata B431D Printer w/ Starter Cartridge	BuyBoard Contract No. 460-14	3005370	\$ 325.00	1%
Black Toner, Okidata B431D	BuyBoard Contract No. 460-14	2005430	\$ 165.00	1%
Okidata C911 Printer w/ Starter Cartridges	BuyBoard Contract No. 460-14	3005434	\$ 6,000.00	1%
Okidata ML-1121 Line Printer	BuyBoard Contract No. 460-14	3005435	\$ 300.00	1%
Toner Cartridge, Okidata C911, Black	BuyBoard Contract No. 460-14	2005424	\$ 130.00	1%
Corrugated Plastic Transfer Case	BuyBoard Contract No. 460-14	1005395	\$ 70.00	1%
Verity Battery Charger, 6 Bay	BuyBoard Contract No. 460-14	3005365	\$ 540.00	1%
Verity Caddy Cover	BuyBoard Contract No. 460-14	2005374	\$ 250.00	1%
Verity Caddy with Casters	BuyBoard Contract No. 460-14	3005375	\$ 740.00	1%
New Implementation Services	BuyBoard Contract No. 460-14		\$2,000.00 (Daily)	1%
License and Support	BuyBoard Contract No. 460-14		Variable, dependent upon equipment and software configuration	0%

*as per the terms of the BuyBoard contract, once the product is certified, it is added to Hart's BuyBoard Contract #460-14

4/22/16

Product Name	Category/Description	Product Code	Product Description	List Price
Verity Voting System Products				
Verity Controller	Voting System Equipment	3005351	Controller for Verity Touch polling place equipment	\$4,650.00
Verity Touch	Voting System Equipment	3005355	Electronic voting unit	\$4,650.00
Verity Touch w/ Access	Voting System Equipment	3005353	Disabled access voting unit	\$5,250.00
Verity Print	Voting System Equipment	3005356	Paper ballot printing unit	\$5,875.00
Verity Print w/ Okidata C911 Printer	Voting System Equipment	3005356	Paper ballot printing unit	\$5,550.00
Verity Print w/ Okidata C831 Printer	Voting System Equipment	3005356	Paper ballot printing unit	\$5,550.00
Verity Scan	Voting System Equipment	3005350	Precinct-based ballot scanning unit	\$6,100.00
Verity Touch Writer w/ Access	Voting System Equipment	3005352	Ballot marking device with accessibility	\$5,300.00
AutoBallot Kit	Voting System Equipment	3005174	Barcode scanner kit for automatic Verity access code creation from VR/electronic poll book data	\$419.00
Canon DR-G1100 Central Scanner	Voting System Equipment	3005436	Central ballot scanner	\$7,500.00
Canon DR-G1130 Central Scanner	Voting System Equipment	3005437	Central ballot scanner	\$10,000.00
Okidata B431D Printer w/ Starter Cartridge	Voting System Equipment	3005370	Laser printer for report printing	\$325.00
Okidata C911 Ballot Printer w/ Starter Cartridges	Voting System Equipment	3005433	Ballot printer	\$4,000.00
Okidata C911 Ballot Printer w/ Starter Cartridges	Voting System Equipment	3005434	Ballot printer	\$6,000.00
Okidata ML-1120 Line Printer	Voting System Equipment	3005435	Audit log printer	\$300.00
Verity Workstation w/ Monitor	Voting System Equipment	2005340	Workstation for Verity software w/ monitor	\$5,900.00
Verity PC Workstation (HP 2230)	Voting System Equipment	2005340	Workstation for Verity software	\$5,550.00
23" Flat Panel Monitor	Voting System Equipment	1005400	Monitor for use with Verity Workstation	\$350.00
Verity Access	Voting System Related Products		Detachable ATI module for use with Verity tablet	\$520.00
Custom USB Printer Cable	Voting System Related Products	2005311	Custom cable to connect Verity Touch Writer and printer	\$10.00
Daisy Chain Cable	Voting System Related Products	2005312		\$20.00
Verity Power Cord	Voting System Related Products	1005325		\$4.60
Verity Power Supply (Touch, Access, Controller, and Print)	Voting System Related Products	2003845		\$89.00
Verity Power Supply (Scan and Touch Writer)	Voting System Related Products	1005230		\$110.00
Verity Voting Device Battery	Voting System Related Products	1005015	Rechargeable battery for Verity voting device	\$6,000.00
Ethernet Cable	Voting System Related Products	1005398		\$20.00
Ethernet Switch, 8 Port	Voting System Related Products	1005399		\$80.00
Hard Drive, 1 TB	Voting System Related Products	1005255		\$600.00
Hard Drive Sled	Voting System Related Products	1005256	Removable sled for installation of hard drive in Verity Workstation	\$350.00
Verity Caddy Cover, 5' Wide	Voting System Related Products		Protective cover for Verity storage caddy	\$250.00
Verity Caddy with Casters, 5' Wide	Voting System Related Products		Storage unit for Verity voting devices; assembly required	\$990.00
Verity Caddy Cover, 4' Wide	Voting System Related Products	2005374	Protective cover for Verity storage caddy	\$250.00
Verity Caddy with Casters, 4' Wide	Voting System Related Products	3005375	Storage unit for Verity voting devices; assembly required	\$740.00
Extender Plate	Voting System Related Products	2005280	Plastic extender plate to support 17" ballots on printer for Verity Touch	\$15.00
Drum Kit, Okidata B431D, Black	Voting System Supplies		Drum kit for Okidata B431D printer	\$175.00
Drum Kit, Okidata C831, Black	Voting System Supplies		Drum kit for Okidata C831 printer	\$175.00
Drum Kit, Okidata C911, Black	Voting System Supplies		Drum kit for Okidata C911 printer	\$370.00
Headphone Covers (Box of 100)	Voting System Supplies	1001-660		\$31.50
Ribbon Cartridge, Printer, ML-1120, OKI	Voting System Supplies	2005431		\$20.00
Thermal Paper Roll (White)	Voting System Supplies	1003705	Paper roll for voting unit	\$0.66
Toner Cartridge, Okidata B431D, Black	Voting System Supplies	2005430	Black toner for Okidata B431D printer	\$165.00
Toner Cartridge, Okidata C831, Black	Voting System Supplies	2005420	Black toner for Okidata C831 printer	\$130.00
Toner Cartridge, Okidata C831, Cyan	Voting System Supplies	2005421	Cyan toner for Okidata C831 printer	\$300.00
Toner Cartridge, Okidata C831, Magenta	Voting System Supplies	2005423	Magenta toner for Okidata C831 printer	\$300.00
Toner Cartridge, Okidata C831, Yellow	Voting System Supplies	2005422	Yellow toner for Okidata C831 printer	\$440.00
Toner Cartridge, Okidata C911, Black	Voting System Supplies	2005424	Black toner for Okidata C911 printer	\$130.00
Toner Cartridge, Okidata C911, Cyan	Voting System Supplies	2005425	Cyan toner for Okidata C911 printer	\$515.00
Toner Cartridge, Okidata C911, Magenta	Voting System Supplies	2005427	Magenta toner for Okidata C911 printer	\$515.00
Toner Cartridge, Okidata C911, Yellow	Voting System Supplies	2005426	Yellow toner for Okidata C911 printer	\$515.00
vDrive	Voting System Supplies	1005324	Flash memory card/audio card for use with Verity devices	\$66.00
Accessible Booth Transport Bag	Voting System Supplies	1005169		\$85.00
Ballot Box Transport Bag	Voting System Supplies	1005173		\$60.00
Corrugated Plastic Transfer Case for Printer	Voting System Supplies	1005397	Case used for shipping and warehouse transfer	\$55.00
Corrugated Plastic Transfer Case for UPS	Voting System Supplies	1005396		\$70.00
Corrugated Plastic Transfer Case for Verity Voting Device	Voting System Supplies	1005395	Case used for shipping and warehouse transfer	\$70.00
Headphones with Microphone	Voting System Supplies	2001-656	Headphones w/ microphone for voice recording	\$40.00
Jelly Switches	Voting System Supplies	1001-364	Low-impact input switches for accessible units	\$183.70
Printer Stand	Voting System Supplies	3005376	Small table for printer	\$50.00
Privacy Screen (Black)	Voting System Supplies	1005161		\$15.00
Scan Calibration Kit	Voting System Supplies	1003496	Kit to calibrate and test scanning speed of precinct scanner	\$34.00
Standard Booth Transport Bag	Voting System Supplies	1005172		\$60.00
Uninterruptible Power Supply (UPS) for Printer	Voting System Supplies	3005362	UPS for printer accompanying Verity Touch Writer	\$725.00
Verity Accessible Booth w/ Transport Bag and Privacy Screens	Voting System Supplies	3005359	Wheelchair-accessible voting booth for Verity Touch w/ Access	\$430.00
Verity Ballot Box Carton	Voting System Supplies	3005336		\$30.00
Verity Ballot Box w/ Transport Bag and Privacy Screens	Voting System Supplies	3005357	Ballot box for use with Verity Scan	\$535.00
Verity Battery Charger, 1 Bay	Voting System Supplies	3005360	1-bay charger for Verity voting device battery	\$185.00
Verity Battery Charger, 6 Bay	Voting System Supplies	3005365	Battery charger for Verity unit	\$540.00
Verity Build Dimensional Overlays	Voting System Supplies	2005342	Provide quality assurance for ballot printing	\$110.00
Verity Headphones	Voting System Supplies	2005230	Headphones for Verity accessible units	\$20.00
Verity Key	Voting System Supplies	3005361	Electronic security token	\$109.00
Verity Standard Booth w/ Transport Bag and Privacy Screens	Voting System Supplies	3005358	Standard voting booth for Verity Touch	\$430.00
Verity Build Dimensional Overlays	Voting System Supplies	2005342	Provide quality assurance for ballot printing	\$110.00
USB Extension Cable	Voting System Supplies	1005387	Cable to protect USB ports on Verity workstations	\$21.00
Electronic Poll Book Products				
Poll Pad Software	Voting Systems Software	2005550	Poll Pad software license	\$ 600.00
Poll Pad Central Command Software	Voting Systems Software	2005551	Software to monitor polling locations, number of posts, Poll Pad connections	\$ 5,000.00
Star Micronics TSP654II Direct Thermal Printer	Voting Systems Related Products	2005552	Thermal printer for Poll Pad	\$ 350.00
Poll Pad Stylus	Voting Systems Related Products	2005553		\$ 2.50
Poll Pad Stand	Voting Systems Related Products	2005554		\$ 50.00
Poll Pad Custom Carrying Case with Printer	Voting Systems Related Products	2005555	Case for Poll Pad and printer transport and storage	\$ 125.00
Poll Pad Custom Carrying Case without Printer	Voting Systems Related Products	2005556	Case for Poll Pad transport and storage	\$ 100.00
Poll Pad Custom Battery Base	Voting Systems Related Products	2005557	Provides an additional 24 hours of battery life to Poll Pad	\$ 90.00
Encoder	Voting Systems Related Products	2005559	Assigns ballot data from Poll Pad to voter access card	\$ 110.00
Meraki MR42 Router	Voting Systems Related Products	2005560	Router to expedite loading data to Poll Pads via network	\$ 2,500.00
iSyncDrive	Voting System Supplies	2005558	USB drive to load data to Poll Pads without a network (computer required)	\$ 40.00
Star Micronics Receipt Paper (50 Rolls)	Voting System Supplies	2005561	Thermal printer paper for Poll Pad	\$ 125.00
Poll Pad On-Site Support (Daily Rate)	Election/Voting Services		On-site support for Poll Pad	\$ 1,250.00
Poll Pad Set-up and Delivery (Per Unit)	Election/Voting Services		Poll Pad kitting, shipping, and handling	\$ 1,250.00
Poll Pad License and Support	Election/Voting Services		Annual Poll Pad license and support fee (per unit)	\$ 125.00
Poll Pad Central Command License and Support	Election/Voting Services		Annual Poll Pad Central Command license and support fee	\$ 1,000.00
ePollBook Kit (TX)	Voting System Related Products	1003920	Includes netbook, driver's license card scanner, label printer with 2 label rolls, and carrying case.	\$ 1,500.00
M&A CT14 Netbook	Voting System Related Products	1003900	Netbook with ePollBook software pre-loaded	\$ 1,000.00
Brother QL-700 Label Printer	Voting System Related Products	1003557-QL700	Prints voter's name, address, and precincts for check-in	\$ 200.00
Driver's License Card Scanner	Voting System Related Products	1003560	Driver's license scanner	\$ 100.00
USB Handheld ID Barcode Scanner	Voting System Related Products	1003561	Used to scan voter's ID from Voter Registration Card	\$ 200.00
USB Handheld 2D Barcode Scanner	Voting System Related Products	1003672	Scanner for voter registration cards and drivers licenses	\$ 390.00
16GB Memory Card	Voting System Related Products			\$ 20.00
8GB Memory Card	Voting System Related Products			\$ 20.00
Signature Capture Pad	Voting System Related Products	1003624		\$ 131.00
Carrying Case with Foam Inserts	Voting System Related Products	1003574	Durable hard-sided case that holds a netbook, handheld scanner, driver's license card scanner, label printer, and spare labels	\$ 200.00
2GB Memory Card	Voting System Related Products	1003583		\$ 12.00
4GB Memory Card	Voting System Related Products	1003737		\$ 20.00
Label Printer Paper Roll (1/2" x 100')	Voting System Supplies	1003559		\$ 13.00
Label Printer Paper Roll (2.4" x 100')	Voting System Supplies	1003728		\$ 29.00
Label Printer Paper Roll (2.1" x 100')	Voting System Supplies	1003726		\$ 24.00
Hart Voting System Products				
DAU eSlate	Voting System Equipment	1001-767-DG	Disabled access voting unit	\$ 3,960.00
DAU eSlate, used	Voting System Equipment	1001-767-U	Disabled access voting unit, used	\$ 2,860.00
eScan	Voting System Equipment	1001-695	Precinct-based scanning unit	\$ 5,940.00
eScan, used	Voting System Equipment	1001-695-U	Precinct-based scanning unit, used	\$ 3,960.00
eSlate	Voting System Equipment	1001-800-DG	Electronic voting unit	\$ 3,300.00
eSlate, used	Voting System Equipment	1001-800-U	Electronic voting unit, used	\$ 2,200.00

12/31/17
New
reported

Product Name	Category/Description	Product Code	Product Description	List Price
JBC	Voting System Equipment	1001-900-DG	Controller for eSlate polling place equipment	\$ 3,300.00
JBC, used	Voting System Equipment	1001-900-U	Controller for eSlate polling place equipment	\$ 2,200.00
Dell Latitude D630 Notebook (Refurbished)	Voting System Equipment	COMP-DELL D630-R	Windows 2000 Laptop configured with HVS software	\$ 2,500.00
Dell OptiPlex X23 PC	Voting System Equipment	COMP-DELL X23 HON-HO	Windows 7 PC configured with HVS software	\$ 2,000.00
Dell OptiPlex 745 (Refurbished)	Voting System Equipment	COMP-OPTIPLEX 745-R	Windows 2000 PC configured with HVS software	\$ 2,800.00
Epson LQ-590 Line Printer	Voting System Equipment	COMP-PRINTER-LQ590	Log printer	\$ 400.00
OkiData C9650dn Ballot Printer	Voting System Equipment	COMP-PRINTER-OKI9650	Laser printer for HVS software on Windows 2000 or Windows 7 PC	\$ 4,040.00
Kodak I660 Central Scanner, used	Voting System Equipment	COMP-SCANNER I660-U	High-volume scanner	\$ 12,800.00
Kodak I610 Central Scanner, used	Voting System Equipment	COMP-SCANNER I610-U		\$ 6,035.00
OkiData B432dn Printer w/ Starter Cartridge	Voting System Equipment	3005371	Laser printer for report printing	\$ 450.00
HP LaserJet M806dn Ballot Printer	Voting System Equipment		Laser printer for HVS software on Windows 7 PC	\$ 4,755.00
DAU Booth, used	Voting System Equipment	1001-673-U	Wheelchair-accessible voting booth for DAU eSlate, used	\$ 560.00
24" Flat Panel Monitor	Voting System Equipment		24" monitor for use with PCs running Hart software	\$ 400.00
eScan Ballot Box	Voting System Equipment	1003376	Ballot box for use with eScan	\$ 800.00
Hard-panel eSlate Booth, used	Voting System Equipment	1001-300-U	Standard voting booth for eSlate, used	\$ 280.00
eSlate Booth	Voting System Equipment	1001-670	Standard voting booth for eSlate	\$ 895.00
DAU Booth	Voting System Equipment	1001-673	Wheelchair-accessible voting booth for DAU eSlate	\$ 895.00
eScan Ballot Box, used	Voting System Equipment	1003376-U	Ballot box for use with eScan, used	\$ 490.00
Battery Tester, JBC/eSlate/DAU	Voting System Related Products	2001-598		\$ 228.00
eScan Tamper Evident Storage Box	Voting System Related Products	1003357		\$ 75.00
HVS Privacy Screen	Voting System Related Products	2001-060		\$ 48.40
Lock Repair Kit for Ballot Box Cover	Voting System Related Products	1003320		\$ 48.00
eScan Shipping Box - Cardboard	Voting System Related Products	1001-334		\$ 48.00
JBC Shipping Box - Cardboard	Voting System Related Products	1001-440		\$ 48.00
Equipment Starter for JBC and Demo eSlate	Voting System Related Products	1003338		\$ 14.00
eScan Privacy Shield	Voting System Related Products	1003309		\$ 14.00
Media Storage Tray for MBBs	Voting System Related Products	1003291		\$ 9.00
ACOD RS232 Hand Held 2D Image Scanner w/ Power Supply	Voting System Related Products	1003673	Scanner for Access Code On-Demand	\$ 405.00
eSlate Storage Caddy III	Voting System Related Products	000295	Side load style, holds up to 8 booths	\$ 931.00
eSlate Storage Caddy III Casters	Voting System Related Products	000304	Casters for eSlate Storage Caddy (set of 4)	\$ 135.00
PC Card Reader/Writer	Voting System Related Products	1003007	Flash memory card reader/writer	\$ 283.00
Storage and Transport Box for JBC	Voting System Related Products	1001-913	Reinforced, padded plastic box for storage and stacking	\$ 60.50
eSlate Cryptographic Module (eCM)	Voting System Related Products	1001-657	Electronic security token	\$ 120.00
eSlate Booth, used	Voting System Related Products	1001-670-U	Standard voting booth for eSlate, used	\$ 560.00
Headphones for DAU eSlate	Voting System Related Products	1001-275	Headphones for DAU eSlate	\$ 20.25
PC Card Reader/Writer, used	Voting System Related Products	1003007-U	Flash memory card reader/writer, used	\$ 147.00
eSlate Storage Caddy III, used	Voting System Related Products	000295-U	Side load style, holds up to 8 booths (used)	\$ 450.00
eSlate Cryptographic Module (eCM), used	Voting System Related Products	1001-657-U	Electronic security token, used	\$ 62.00
Headphones for DAU eSlate, used	Voting System Related Products	1001-275-U	Headphones for DAU eSlate, used	\$ 12.00
17" Flat Panel Monitor	Voting System Related Products	COMP-MONITOR-17IN	17" monitor for use with PCs running Hart software	\$ 200.00
Hard-panel DAU Booth, used	Voting System Related Products	1001-303-U	Wheelchair-accessible voting booth for DAU eSlate, used	\$ 280.00
UPS, 850W	Voting System Related Products	1002-790	850W backup power supply	\$ 635.00
Tape, Red ID for eSlate/DAU Booth	Voting System Related Products	1001-408		\$ 1.80
Ballot Now Dimensional Overlays	Voting System Related Products	1003445		\$ 110.00
Mobile Ballot Box (MIBB)	Voting System Related Products	1003520	Flash memory card/audio card for use with Hart voting equipment	\$ 65.00
Jelly Switches, used	Voting System Related Products	1001-364-U	Low-impact input switches for accessible units, used	\$ 123.20
Quatech Card and Cable	Voting System Related Products	COMP-QUATECH CARD	Quatech card and cable for use with SERVO	\$ 182.00
Thermal Paper Roll (White)	Voting System Supplies	1003705	Paper roll for voting unit	\$ 0.66
Thermal Paper Roll (Pink)	Voting System Supplies	1001-668		\$ 0.99
Thermal Paper Roll (Green)	Voting System Supplies	1001-617		\$ 0.99
Toner Cartridge, OkiData B432D, Black	Voting System Supplies		Black toner for OkiData B432D printer	\$ 165.00
Cable - JBC to First eSlate	Voting System Supplies	1001-714		\$ 115.00
Crossover Cable	Voting System Supplies	COMP-CABLE-CROSSOVER	Cable for SERVO connection to eScan	\$ 38.50
Hard-panel Privacy Screens (Set of 2), used	Voting System Supplies	1001-300-U	Pair of hard-panel privacy screens for eSlate or DAU booth, used	\$ 30.00
Cable - eSlate to eSlate Daisy Chain	Voting System Supplies	1001-713		\$ 126.00
eScan Power Supply, External	Voting System Supplies	1001-807		\$ 118.00
Leg Left Rear for eSlate Booth	Voting System Supplies	1000402		\$ 90.75
Leg Left Rear for DAU Booth	Voting System Supplies	1000405		\$ 90.75
Leg Right Rear for eSlate Booth	Voting System Supplies	1000404		\$ 78.65
Leg Right Rear for DAU Booth	Voting System Supplies	1000406		\$ 78.65
Leg Left Front for eSlate Booth	Voting System Supplies	1003057		\$ 60.50
Leg Right Front for eSlate Booth	Voting System Supplies	1003058		\$ 60.50
Leg Left Front for DAU Booth	Voting System Supplies	1003059		\$ 60.50
Leg Right Front for DAU Booth	Voting System Supplies	1003060		\$ 60.50
Parallel Cable - PC to JBC	Voting System Supplies	COMP-A/B Parallel		\$ 49.00
Booth Foot	Voting System Supplies	1003067		\$ 42.35
Booth Leg Extension Straight	Voting System Supplies	1003065		\$ 38.30
JBC Battery Key with Captive Chain	Voting System Supplies	1001-540		\$ 24.20
Lid - Storage Compartment in Booth	Voting System Supplies	000254		\$ 16.50
eSlate/DAU Battery Cover	Voting System Supplies	1001-144		\$ 13.40
Keyed Lock for Ballot Box Cover	Voting System Supplies	1003073		\$ 10.30
JBC Fuse (5-pack)	Voting System Supplies	1001-172		\$ 7.90
JBC Paper Roll Spindle	Voting System Supplies	1001-201		\$ 7.00
JBC Shipping Box Handle	Voting System Supplies	1001-509		\$ 4.50
Port Connector Guide, Booth	Voting System Supplies	1001-906		\$ 3.65
Leg Button - Spring-loaded Button Replacement	Voting System Supplies	1001-827		\$ 3.65
Jackscrow Male/Female, Long	Voting System Supplies	1001-848		\$ 3.65
Velcro Booth Strap, 7.5"	Voting System Supplies	1001-818		\$ 3.50
Booth Replacement Latch	Voting System Supplies	1001-821		\$ 3.50
Port Connector Guide - Red "Booth Out" for JBC to First eSlate Cable	Voting System Supplies	1001-904		\$ 3.20
Port Connector Guide, eSlate/DAU - Black	Voting System Supplies	1001-905		\$ 3.15
Brass Mounting Post for non-VBO Booth	Voting System Supplies	1001-285		\$ 3.15
Hinge Support Arm	Voting System Supplies	1001-706	Hinge arm for eSlate booth	\$ 18.30
JBC Case Bottom	Voting System Supplies	1001-507-DG		\$ 131.45
Cable - eSlate to eSlate Daisy Chain w/ Mounting Hardware	Voting System Supplies	1001-805		\$ 126.00
Cable - Pigtail, Internal Booth to eSlate or DAU	Voting System Supplies	1001-579		\$ 75.00
eScan Power Supply Board	Voting System Supplies	1001-688		\$ 200.00
Battery Pack (White), JBC/eSlate/DAU	Voting System Supplies	2001-596		\$ 30.25
JBC/eScan Power Cord	Voting System Supplies	2001-456		\$ 4.60
Battery Pack (Black), JBC/eSlate/DAU	Voting System Supplies	2001-592		\$ 63.00
Velcro Booth Strap, 3.8"	Voting System Supplies	1001-168		\$ 2.50
JBC Shipping Box Handle Backer	Voting System Supplies	1001-510		\$ 2.45
Privacy Screen Clip	Voting System Supplies	1001-708		\$ 1.25
Curtain Retainer	Voting System Supplies	1001-710		\$ 1.25
Jackscrow Male/Female, Short	Voting System Supplies	1001-213		\$ 0.50
Engineering Services (Hourly)	Election/Voting Services			\$ 250.00
eSlate-to-DAU Conversion	Election/Voting Services		Conversion of eSlate units to DAU/eSlate units	\$ 660.00
New Implementation Services (Daily)	Election/Voting Services			\$ 2,000.00
Preventative Maintenance at Hart - JBC	Election/Voting Services		Preventative maintenance for JBC performed at Hart headquarters	\$ 100.00
Preventative Maintenance - eScan	Election/Voting Services			\$ 100.00
Preventative Maintenance - JBC	Election/Voting Services			\$ 50.00
Preventative Maintenance - Kodak 3520 (Zone 1-2)	Election/Voting Services		Preventative maintenance for Kodak 3520 series scanner, consumable	\$ 1,694.00
Preventative Maintenance - Kodak 3520 (Zone 3)	Election/Voting Services		Preventative maintenance for Kodak 3520 series scanner, consumable	\$ 2,002.00
Preventative Maintenance - Kodak IS200 (Zone 1-2)	Election/Voting Services		Preventative maintenance for Kodak IS200 series scanner, consumable	\$ 1,814.00
Preventative Maintenance - Kodak IS200 (Zone 3)	Election/Voting Services		Preventative maintenance for Kodak IS200 series scanner, consumable	\$ 2,122.00
Preventative Maintenance - Kodak IS600 (Zone 1-2)	Election/Voting Services		Preventative maintenance for Kodak IS600 series scanner, consumable	\$ 1,814.00
Preventative Maintenance - Kodak IS600 (Zone 3)	Election/Voting Services		Preventative maintenance for Kodak IS600 series scanner, consumable	\$ 2,122.00
Preventative Maintenance - Kodak 1600 (Zone 1-2)	Election/Voting Services		Preventative maintenance for Kodak 1600 series scanner, consumable	\$ 1,702.00
Preventative Maintenance - Kodak 1600 (Zone 3)	Election/Voting Services		Preventative maintenance for Kodak 1600 series scanner, consumable	\$ 2,009.00
Preventative Maintenance - Kodak 1800 (Zone 1-2)	Election/Voting Services		Preventative maintenance for Kodak 1800 series scanner, consumable	\$ 3,738.00
Preventative Maintenance - Kodak 1800 (Zone 3)	Election/Voting Services		Preventative maintenance for Kodak 1800 series scanner, consumable	\$ 4,311.00
Professional Services (Daily)*	Election/Voting Services		Additional travel charges apply based on customer location	\$ 1,250.00
Hart ePollBook Services	Election/Voting Services		Creation of ePollBook database files	\$ 500.00
Technical Services (Hourly)	Election/Voting Services			\$ 250.00
Training at Hart (Daily)	Election/Voting Services		Training classes to be held at Hart HQ in Austin, TX	\$ 725.00
Webinar Training	Election/Voting Services		Training delivered via webinar	\$ 400.00
Annual License and Support Fee	Election/Voting Services		Annual fee	Variable, dependent upon equipment and software configuration

*Election Day Support is a 2-day minimum.

12/13/17
New
updates

Hart Inter Civic, Inc.
BuyBoard Contract No. 460-14 Voting Systems Equipment and Supplies

Product Name	Category/Description	Product Code	Product Description	List Price
Software License: Software License Name		<10,000 Registered Voters	10,000-49,999 Registered Voters	50,000-249,999 Registered Voters 250,000+ Registered Voters
Verity Build - Client	Voting Systems Software	\$3,750.00		\$7,500.00 \$10,000.00
Verity Build - Server	Voting Systems Software	\$15,000.00		\$30,000.00 \$40,000.00
Verity Central - Client	Voting Systems Software	\$4,375.00		\$8,750.00 \$12,500.00
Verity Central - Server	Voting Systems Software	\$17,500.00		\$35,000.00 \$50,000.00
Verity Count - Client	Voting Systems Software	\$1,500.00		\$3,000.00 \$3,375.00
Verity Count - Server	Voting Systems Software	\$6,000.00		\$12,000.00 \$13,500.00
		<50,000 Registered Voters	50,000-99,999 Registered Voters	100,000+ Registered voters
Hart Voting System Access Code On-Demand	Voting Systems Software	\$ 5,000.00		\$ 7,500.00 \$10,000.00
Hart Voting System Absentee Processing System (Networked)	Voting Systems Software	\$ 15,000.00		\$ 20,000.00 \$ 25,000.00
Hart Voting System Ballot Now	Voting Systems Software	\$ 35,000.00		\$ 50,000.00 \$ 60,000.00
Hart Voting System Ballot Now Lite	Voting Systems Software	\$ 12,000.00		\$ 17,000.00 \$ 20,000.00
Hart Voting System BGSS	Voting Systems Software	\$ 30,000.00		\$ 40,000.00 \$ 50,000.00
Hart Voting System FUSION	Voting Systems Software	\$ 5,000.00		\$ 5,000.00 \$ 5,000.00
Hart Voting System INFUSION	Voting Systems Software	\$ 10,000.00		\$ 10,000.00 \$ 10,000.00
Hart Voting System Rally	Voting Systems Software	\$ 5,000.00		\$ 5,000.00 \$ 5,000.00
Hart Voting System SERVQ	Voting Systems Software	\$ 4,000.00		\$ 4,000.00 \$ 5,000.00
Hart Voting System Tally	Voting Systems Software	\$ 12,000.00		\$ 12,000.00 \$ 15,000.00
		<25,000 Registered Voters		
Hart Voting System Absentee Processing System (Non-networked)	Voting Systems Software	\$ 5,000.00		
		1-50 Seats	51-100 Seats	101-500 Seats 501-1000 Seats 1000+ Seats
Hart ePollBook	Voting Systems Software	\$ 575.00		\$ 515.00 \$ 465.00 \$ 415.00 \$ 370.00

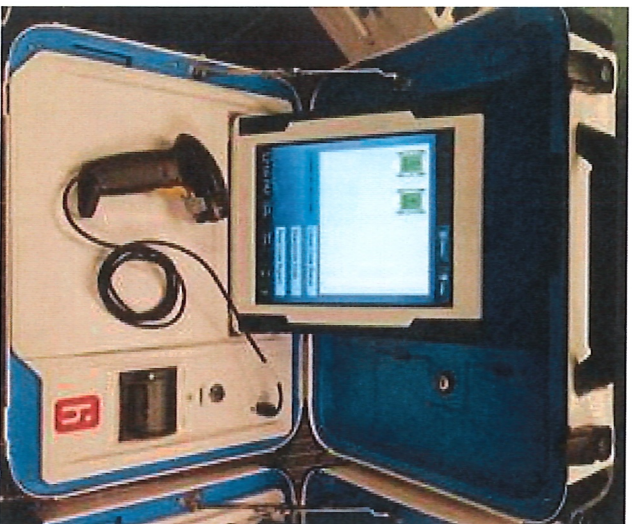
12/2/17
New
updates

The Hart Verity Voting System

Hidalgo County, Texas



Verity Electronic Voting Devices



Verity Controller w/ AutoBallot Kit

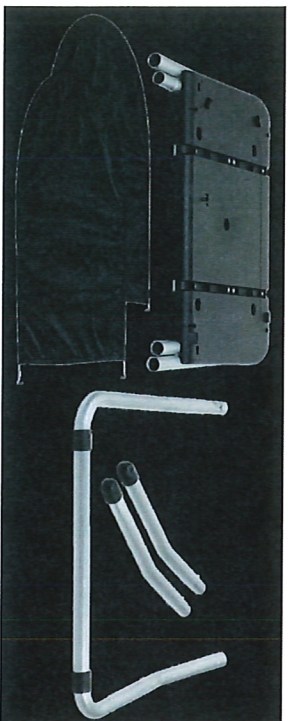


Verity Touch



Verity Touch w/ Access

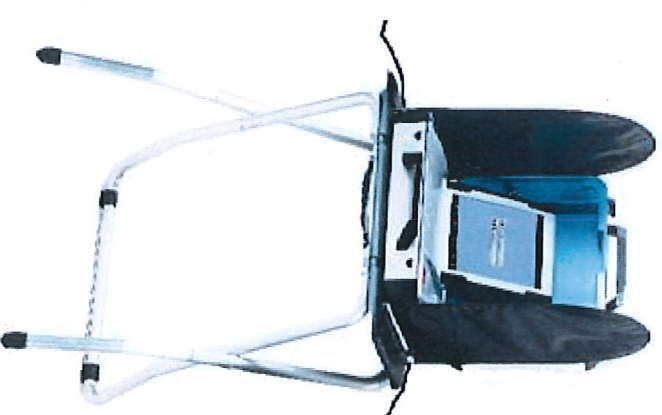
Verity Electronic Voting Devices



Verity booth components (stand, legs and privacy screens). The components are stored in a transport bag (pictured at the right).

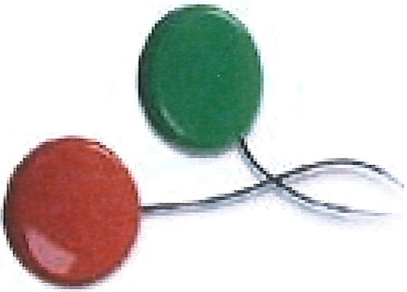


Stored voting device with booth transport bag



Open voting device and booth

Verity System Components



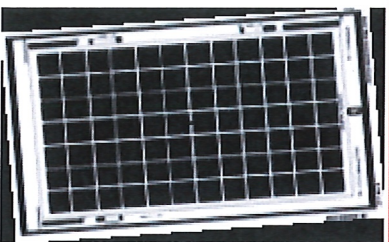
Jelly Switches



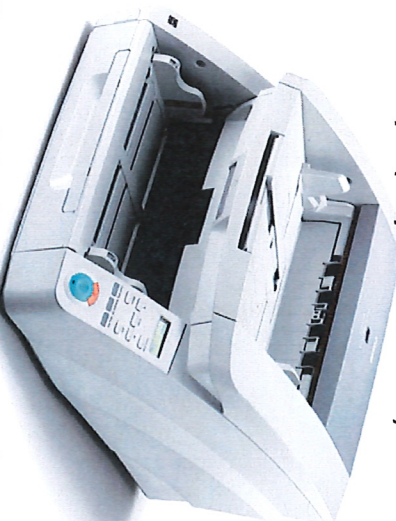
VDrive



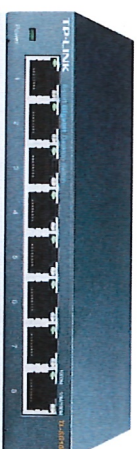
Verity Key



Verity Build Dimensional
Overlays (mylar sheets)



Canon DR-G1130 Central Scanner



Ethernet Switch, 8 port



Verity Workstation

Verity System Components



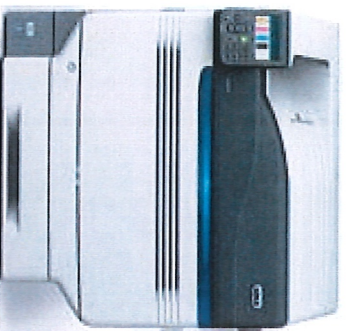
23" Flat Panel Monitor



Okidata B431D Printer



Black Toner, Okidata B431D



Okidata C911 Printer



Okidata ML-1121 Printer



Toner Cartridge, Okidata C911
(shown with box)

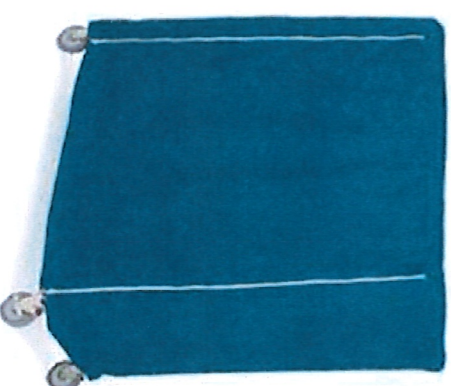
Verity System Components



Corrugated Plastic Transfer Case

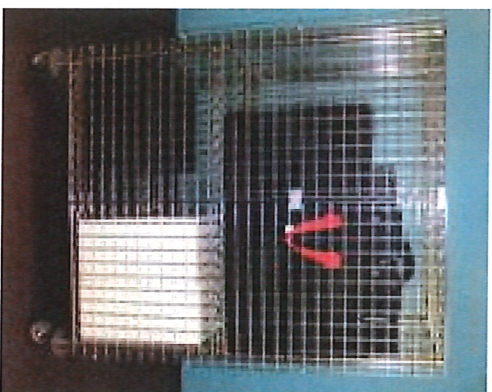


Battery Charger (pictured with two batteries)



Verity Caddy Cover (shown covering a caddy)

Verity System Components



Verity Caddy with Casters (pictured
with voting devices)

Verity System Classification

Item	Classification	Photo?
Verity Controller	Hardware	Yes
AutoBallot Kit	Hardware	Yes
Verity Touch	Hardware	Yes
Verity Standard Booth	Component	Yes
Verity Touch w/ Access	Hardware	Yes
Verity Accessible Booth	Component	Yes
Jelly Switches	Component	Yes
vDrive	Component	Yes
Verity Key	Component	Yes
Verity Build	Software	No
Verity Build Dimensional Overlays	Component	Yes

Verity System Classification

Item	Classification	Photo?
Verity Count	Software	No
Verity Central – Server	Software	No
Canon DR-G1130 Central Scanner	Hardware	Yes
Ethernet Switch, 8 Port	Hardware	Yes
Verity Workstation	Hardware	Yes
23” Flat Panel Monitor	Hardware	Yes
Okidata B431D Printer	Hardware	Yes
Black Toner, Okidata B431D	Component	Yes
Okidata C911 Printer	Hardware	Yes
Okidata ML-1121 Line Printer	Hardware	Yes
Toner Cartridge, Okidata C911	Component	Yes

Verity System Classification

Item	Classification	Photo?
Corrugated Plastic Transfer Case	Component	Yes
Verity Battery Charger	Component	Yes
Verity Caddy Cover	Component	Yes
Verity Caddy with Casters	Component	Yes
New Implementation Services	Services	No
License and Support	Licensing	No