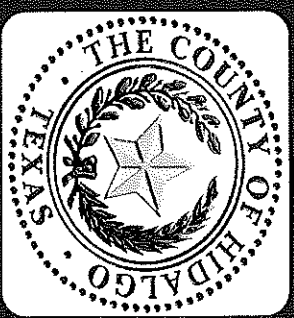


Delta Area Connector/East Lateral Drainage Ditch

Overall Project Status

PRESENTED BY LEFEVRE ENGINEERING & MANAGEMENT CONSULTING, LLC
Hidalgo County, Texas



MAY 2, 2017

INTRODUCTIONS & PARTIES INVOLVED

- Texas General Land Office
- Hidalgo County - Urban County Program
- Hidalgo County Precinct No. 1
- Hidalgo County Drainage District No. 1
- DOS Logistics, INC
- LeFevre Engineering & Mang. Conslt.,LLC
- Saenz Brothers Construction, LLC

AGENDA

- Welcome and Introductions
- **Description of the Project**
- Overall Project Map
- Project Budget and Schedule
- Progress of Project and Video
- Questions

PROJECT DESCRIPTION

- Delta Area Connector/East Lateral Drainage Ditch Project
 - Proposed ditch section of 1 60 feet of width and 7 miles in length connecting from Mercedes Lateral Drainage system up to the Main Floodwater Channel.
 - These drainage improvements will serve drainage relief to more than approximately 55,000 residents and 1 5 rural colonias for a total of 56 square miles within Precinct No. 1.
 - Project consist of a total of 1 4 road crossings (two on TXDOT R.O.W) & 2 outfall structures and over 1.3 Million Cubic Yards of material excavation.

AGENDA

- Welcome and Introductions
- Description of the Project
- **Overall Project Map**
- Project Budget and Schedule
- Progress of Project and Video
- Questions

East Lateral Drainage Ditch Alignment



AGENDA

- Welcome and Introductions
- Description of the Project
- Overall Project Map
- **Project Budget and Schedule**
- Progress of Project and Video
- Questions

PROJECT BUDGET AND SCHEDULE

- Due to insufficient and inadequate drainage infrastructure resulted in flooding and damage to various areas in Precinct No. 1. With the help of Hidalgo County - Urban County Program and Texas General Land Office, Disaster Recovery Grants were received to fund the majority of the \$15 Million drainage project.
- Project is broken into 3 phases and began in August 2015 and is projected to be completed in August 2017.

AGENDA

- Welcome and Introductions
- Description of the Project
- Overall Project Map
- Project Budget and Schedule
- **Progress of Project and Video**
- Questions

PROGRESS OF PROJECT

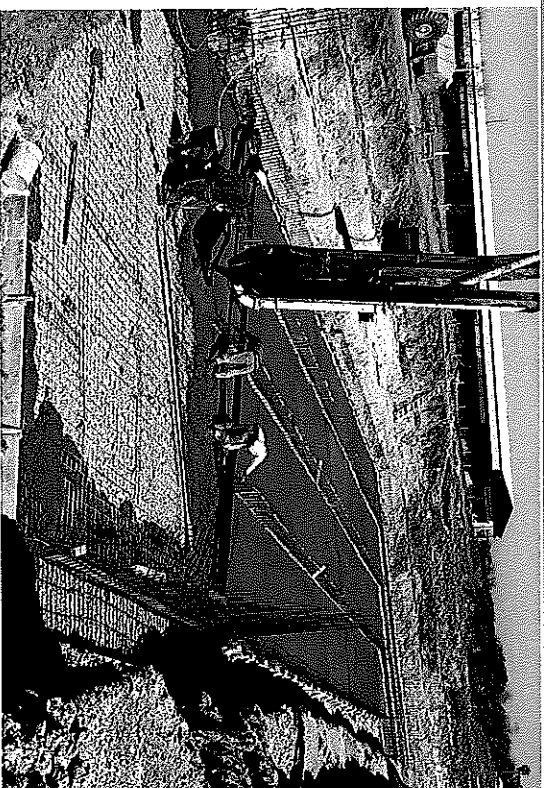
August 2015



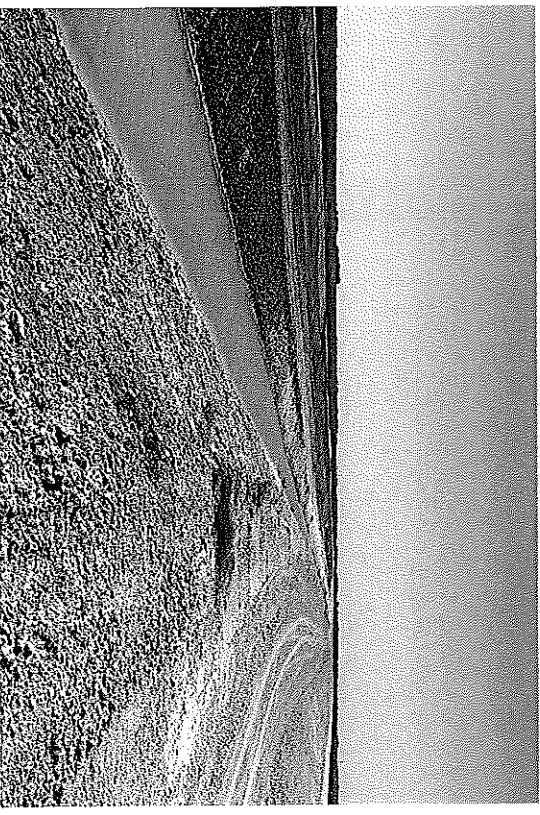
April 2017



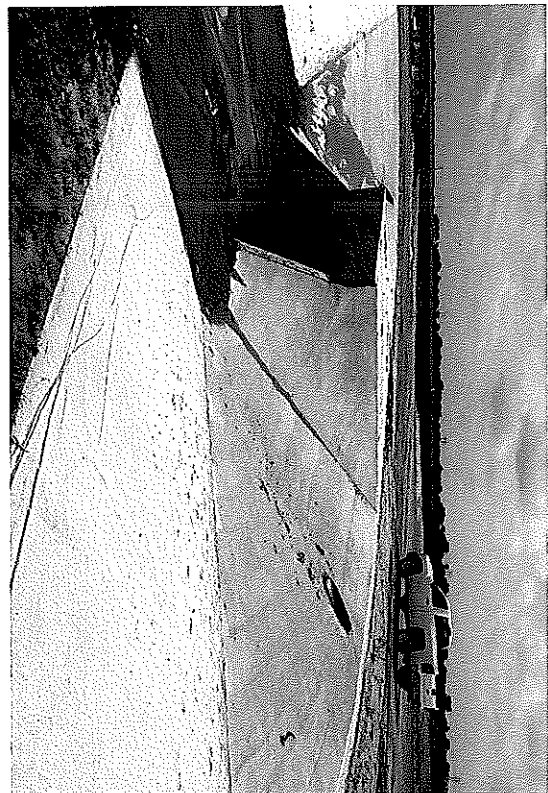
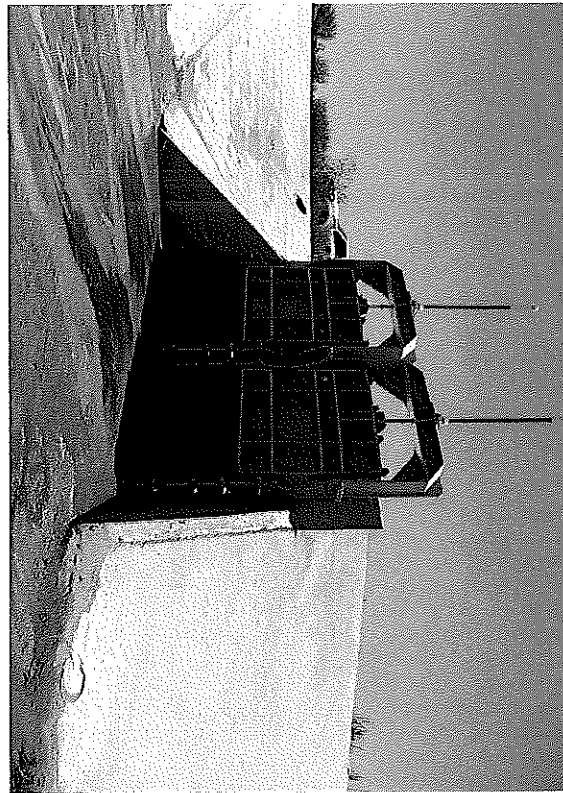
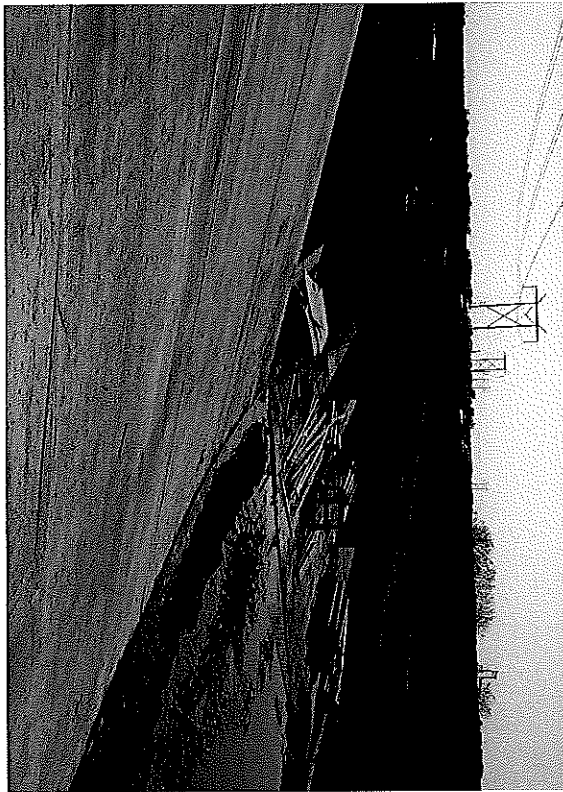
PROGRESS OF PROJECT



PROGRESS OF PROJECT



PROGRESS OF PROJECT



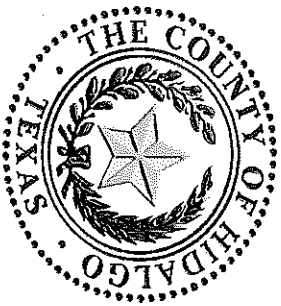
VIDEO – EAST LATERAL DRAINAGE PROJECT



LeFEVRE
ENGINEERING &
MANAGEMENT CONSULTING, LLC

Questions???

LEFEVRE
ENGINEERING &
MANAGEMENT CONSULTING, LLC



LEFEVRE
ENGINEERING &
MANAGEMENT CONSULTING, LLC