

# Requisition

Req # 00345059

PO #

Date: 06/21/17

Bill To: x  
x

Vendor: 269123  
RUSH TRUCK CENTER-PHARR  
4700 N. CAGE  
PHARR TX 78577  
FAX (956)782-8822

Ship To: HIDALGO CO. PCT 4  
1051 N. DOOLITTLE  
EDINBURG TX 78542

Contact: NICK PEREZ  
956-383-3112

Contract No: BUYBOARD 521-16

Special Instructions:  
PCT#595

QUANTITY	UOM	DESCRIPTION	UNIT PRICE	AMOUNT
		BUYBOARD 521-16, EXP: 11/30/2019		
		2017 FORD F-250 PICK UP PCT.4 EMERGENCY RESPONSE VEHICLE DO NOT DUPLICATE ORDER		
1.00	EACH	CO W2B	6,600.00	6,600.00
1.00	EACH	CO 6.7 L POWER STROKE	8,795.00	8,795.00
1.00	EACH	CO LT245 BSW AT/3.31 E LOCKING	555.00	555.00
1.00	EACH	CO POWER EQUIPMENT GROUP	1,125.00	1,125.00
1.00	EACH	CO FX4 OFF ROAD PACKAGE	295.00	295.00
1.00	EACH	CO ELECTRONIC SHIFT ON THE FLY	185.00	185.00
1.00	EACH	CO UPFITTER SWITCHES/SYNC	355.00	355.00
1.00	EACH	CO XL VALUE PACKAGE	720.00	720.00
1.00	EACH	CO 21 PT. RUSH CARE INSPECTION	1,236.00	1,236.00
1.00	EACH	CO FORD MAKE READY AND WASH	200.00	200.00
1.00	EACH	CO LOT INSURANCE	1,237.00	1,237.00
1.00	EACH	CO FLOOR PLAN INTREST	1,043.00	1,043.00
1.00	EACH	CO F-250	19,000.00	19,000.00
1.00	EACH	CO BUYBOARD ADMINISTRATIVE FEE	400.00	400.00
1.00	EACH	CO FREIGHT	600.00	600.00
		<u>Account No</u>	<u>Encumbrance</u>	
		7-1350-431-00-124-153-0-752	42,346.00	
			Freight	.00
			Total	42,346.00
		REPORT ROAD HAZARDS 1-866-HCR-SAFE OR 1-866-427-7233		

Authorized By: \_\_\_\_\_

BODY MFGR	MODEL NAME	<u>RUSH TRUCK CENTER OPTION NUMBER:</u>	OPTION DESCRIPTION	OFFERED PRICE
RUSH	Rush Care Standard Retail	RTC 0051	21pt inspection, free towing, mobile care (1year)	\$ 1,236
RUSH	SHOP LABOR	RTC 0052	PAINTING [Per Hour]	\$ 128
RUSH	BODY PREP	RTC 0053	BODY PREPARATION PACKAGE	\$ 2,438
WARREN	WSC5519	RTC 0054	CLASS 20 8'-11' BODIES	\$ 4,025
WARREN	U50-717	RTC 0055	CLASS50 8'-9'	\$ 4,370
WARREN	U60-823	RTC 0056	CLASS 50 9'-10'	\$ 4,485
WARREN	U70-824	RTC 0057	CLASS 70 12' BODIES	\$ 4,485
WARREN	U110-8824	RTC 0058	CLASS 110 13'-14' BODIES	\$ 6,095
RUSH	DEF,FUEL, & WASH	RTC 0059	FUELING	\$ 950.00
WARREN	T-10-585	RTC 0060	CLASS 70 10' BODIES	\$ 4,370
WARREN	T-10-6385	RTC 0061	CLASS 90 10' BODIES	\$ 4,485
WARREN	VTLW-6397	RTC 0062	CLASS 100 12' BODIES	\$ 4,600
WARREN	VTLW-63110	RTC 0063	CLASS 110 13-14' BODIES	\$ 4,888
WARREN	VTLW-63126	RTC 0064	CLASS 120 15-16' BODIES	\$ 4,888
WARREN	VTLW-63142	RTC 0065	CLASS 120 17-18' BODIES	\$ 5,175
WARREN	VTLW-74135	RTC 0066	CLASS 120 16-17' BODIES	\$ 5,175
WARREN	VTLW-74167	RTC 0067	CLASS 120 18-19' BODIES	\$ 5,693
RUSH	HEADACHE RACK	RTC 0068	ALUMINUM CAB PROTECTOR	\$ 2,013
RUSH	EPORTAL LISTING	RTC 0069	ANNUAL SERVICE PACKAGE	\$ 460
RUSH	10'	RTC 0070	10'	\$ 6,095
RUSH	12'	RTC 0071	12'	\$ 6,095
RUSH	14'	RTC 0072	14'	\$ 6,900
RUSH	16'	RTC 0073	16'	\$ 7,360
RUSH	18'	RTC 0074	18'	\$ 8,050
RUSH	20'	RTC 0075	20'	\$ 8,280
RUSH	22'	RTC 0076	22'	\$ 8,970
RUSH	24'	RTC 0077	24'	\$ 9,660
RUSH	16' Reefer Body	RTC 0078	Body and cooling unit	\$ 35,603
RUSH	20' Reefer Body	RTC 0079	Body and cooling unit	\$ 37,154
RUSH	24' Reefer Body	RTC 0080	Body and cooling unit	\$ 40,247
RUSH	HEATED FLOOR	RTC 0083	HEATED FLOOR	\$ 3,450
RUSH	STAKE SIDES FOR FLAT BEDS [Per Foot]	RTC 0084	STAKE SIDES FOR FLAT BEDS [Per Foot]	\$ 127
RUSH	SAFETY CAGE	RTC 0085	FOR HIGH LIFT	\$ 3,766
RUSH	MD CNG Conversion	RTC 0086	ALT Fuel Conversion	\$ 18,400
RUSH	LUBE TRUCK	RTC 0087	BASIC 1K TANK BODY	\$ 62,000.00
RUSH	WINCH TRUCK	RTC 0088	34K WINCH TRUCK	\$ 44,563
RUSH	WINCH TRUCK	RTC 0089	64K WINCH TRUCK	\$ 48,300
RUSH	WINCH TRUCK	RTC 0090	DOUBLE WINCH TRUCK	\$ 94,300
RUSH	CAB SHIELDS	RTC 0091	REPLACEMENT	\$ 1,783
RUSH	APRONS	RTC 0092	8" PUSH TYPE	\$ 1,093
RUSH	LADDER	RTC 0093	SIDE MOUNT DUMP BODY	\$ 403

BODY MFGR	MODEL NAME	<u>RUSH TRUCK CENTER OPTION NUMBER:</u>	OPTION DESCRIPTION	OFFERED PRICE
Terex	TL37M	RTC 1023	Telescoping Material Handling Aerial Device-43 ft working	\$ 98,538.00
Terex	TL41M	RTC 1024	Telescoping Material Handling Aerial Device- 47 ft working	\$ 98,705.75
Terex	TL45M	RTC 1025	Telescoping Material Handling Aerial Device- 49 ft working	\$ 109,219.00
Terex	HR37M	RTC 1026	Overcenter Material Handling Aerial Device- 42 ft working	\$ 89,865.88
Terex	HR40M	RTC 1027	Overcenter Material Handling Aerial Device- 45 ft working	\$ 90,613.88
Terex	LT36	RTC 1028	Telescoping Aerial Device-41 ft working height	\$ 75,966.00
Terex	LT38	RTC 1029	Telescoping Aerial Device- 43 ft working height	\$ 76,158.50
Terex	LT40	RTC 1030	Telescoping Aerial Device- 45 ft working height	\$ 76,973.88
Terex	FC40	RTC 1031	Non-Overcenter Articulating Aerial Device- 45 ft working	\$ 106,792.13
Terex	FC55	RTC 1032	Non-Overcenter Articulating Aerial Device- 60 ft working	\$ 114,416.50
Terex	TC55	RTC 1033	Non-Overcenter Material Handling Aerial Device- 60 ft	\$ 122,267.75
Terex	TC65	RTC 1034	Non-Overcenter Material Handling Aerial Device- 70 ft	\$ 136,581.50
Terex	C4045 TM	RTC 1035	Commander Center Mount Derrick with TM winch- Sheeve	\$ 138,928.63
Terex	C4045 PG	RTC 1036	Commander Center Mount Derrick with PG winch- Sheeve 45	\$ 137,964.75
Terex	C4047 TM	RTC 1037	Commander Center Mount Derrick with TM winch- Sheeve	\$ 141,999.00
Terex	C4047 PG	RTC 1038	Commander Center Mount Derrick with PG winch- Sheeve	\$ 141,999.00
Terex	C4050 TM	RTC 1039	Commander Center Mount Derrick with TM winch- Sheeve	\$ 152,741.88
Terex	C6054	RTC 1040	Commander Center Mount Derrick- Sheeve height 54 ft	\$ 191,034.25
Terex	C6060	RTC 1041	Commander Center Mount Derrick- Sheeve height 60 ft	\$ 191,034.25
Terex	General 65	RTC 1042	General Center Mount Derrick- Sheeve height 65 ft	\$ 258,233.25
RUSH	REAR STEER APPLICATION	RTC 1043	REAR STEER FOR LOADER APPLICATION	\$ 53,747.50
PAC-MAC	SHUTTLE LOADER	RTC 1044	SHUTTLE LOADER	\$ 60,500.00
RUSH	CNG CONVERSION	RTC 1045	CUMMINS "L" only	\$ 49,937.50
RUSH	FRAME CLEAN	RTC 1046	Clean Stock Frame for Body Install	\$ 1,781.25
DICKSON	RUMBLER 6200	RTC 1047	Rumble Strip Machine	\$ 244,375.00
MRL	PAINT STRIPER	RTC 1048	Paint Striper	\$ 190,000.00
MRL	PAINT STRIPER	RTC 1049	Thermoplastic Paint Striper	\$ 281,250.00
Amthor	Septic Tank	RTC 1051	1250 Portable Restroom Tank	\$ 32,990
Amthor	Septic Tank	RTC 1052	2000 Gallon Portable Restroom	\$ 34,990
Amthor	Septic Tank	RTC 1053	2500 Gallon Vacuum Tank	\$ 34,950
Amthor	Septic Tank	RTC 1054	4000 Gallon Vacuum Tank	\$ 39,990
Amthor	Propane Tank	RTC 1055	3499 Gallon Propane Tank	\$ 55,950
CLS	Jetter Body	RTC 1056	2,000 Gallon Jetter Body	\$ 81,500
VacCon		RTC 1057	Single Engine 11 CY Jetter/Blower w/ 80 gpm	\$ 213,000
Rush	Light Duty Wash	RTC 1058	Make Ready Wash	\$ 200
Rush	Lot Insurance	RTC 1059	Lot Insurance	3% of sales price
Rush	Flooring	RTC 1060	Dealership Flooring	3% of sales price
Geotab	G07 Device with adapter cab	RTC 1061	Fleet Management Systems	\$ 135
Geotab	IOX-AUX	RTC 1062	Specialty Harnesses	\$ 75.00

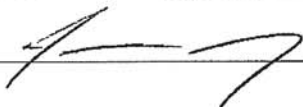
BODY MFGR	MODEL NAME	<u>RUSH TRUCK CENTER OPTION NUMBER:</u>	OPTION DESCRIPTION	OFFERED PRICE
DAVIS BODY	LIFT AXLE-NON STEERABLE 20,000lbs AIR TANK KIT NO WHEELS & TIRES	RTC 0958	LIFT AXLE-NON STEERABLE 20,000lbs AIR TANK KIT NO WHEELS & TIRES	\$ 5,951.25
DAVIS BODY	16' 13-16 CUBIC YARD BODY, TANDEM AXLE TRUCK W/ THIRD AXLE TO BE ADDED - 63140 TELESCOPIC HOIST - 38 TONS - NTEA CLASS 110	RTC 0959	16' 13-16 CUBIC YARD BODY, TANDEM AXLE TRUCK W/ THIRD AXLE TO BE ADDED - 63140 TELESCOPIC HOIST - 38 TONS - NTEA CLASS 110	\$ 10,527.10
DAVIS BODY	17' 14-17 CUBIC YARD BODY, TANDEM AXLE TRUCK W/ THIRD AXLE TO BE ADDED - 63- 15015 TELESCOPIC HOIST - 42 TONS - NTEA CLASS 110	RTC 0960	17' 14-17 CUBIC YARD BODY, TANDEM AXLE TRUCK W/ THIRD AXLE TO BE ADDED - 63- 15015 TELESCOPIC HOIST - 42 TONS - NTEA CLASS 110	\$ 10,978.07
DAVIS BODY	SUBFRAME 13' THROUGH 17' BODY	RTC 0962	SUBFRAME 13' THROUGH 17' BODY	\$ 462.88
DAVIS BODY	1/2 CAB PROTECTOR	RTC 0963	1/2 CAB PROTECTOR	\$ 244.66
DAVIS BODY	ASPHALT APRON	RTC 0964	ASPHALT APRON	\$ 185.15
DAVIS BODY	AIR TAILGATE	RTC 0965	AIR TAILGATE	\$ 227.47
DAVIS BODY	HOT SHIFT PTO FOR ALLISON AUTOMATIC TRANSMISSION 3000 TO 4000 SERIES	RTC 0966	HOT SHIFT PTO FOR ALLISON AUTOMATIC TRANSMISSION 3000 TO 4000 SERIES	\$ 1,190.25
DAVIS BODY	HOT SHIFT PTO FOR ALLISON AUTOMATIC TRANSMISSION 2000 TO 2500 SERIES WITH EOS	RTC 0967	HOT SHIFT PTO FOR ALLISON AUTOMATIC TRANSMISSION 2000 TO 2500 SERIES WITH	\$ 1,415.08
DAVIS BODY	(TARP SYSTEMS)	RTC 0968	(TARP SYSTEMS)	\$ 1,250.00
DAVIS BODY	2000 X MANUAL TARP FOR 12' TO 17' BODIES	RTC 0969	2000 X MANUAL TARP FOR 12' TO 17' BODIES	\$ 531.65
DAVIS BODY	U.S. TARP 11528 GROUND LEVEL HAND CRANK TARP SYSTEM (SEMI-AUTOMATIC) WITH MESH TARP MATERIAL FOR 12' TO 17' BODIES	RTC 0970	U.S. TARP 11528 GROUND LEVEL HAND CRANK TARP SYSTEM (SEMI-AUTOMATIC) WITH MESH TARP MATERIAL FOR 12' TO 17' BODIES	\$ 945.59
DAVIS BODY	U.S. TARP 11525 ELECTRIC TARP SYSTEM WITH STEEL ARMS, WIND DEFLECTOR, IN- CAB CONTROLS AND MESH TARP MATERIAL FOR 12' TO 17'	RTC 0971	U.S. TARP 11525 ELECTRIC TARP SYSTEM WITH STEEL ARMS, WIND DEFLECTOR, IN- CAB CONTROLS AND MESH TARP MATERIAL FOR 12' TO	\$ 1,210.09
DAVIS BODY	OPTIONAL 18 OZ. VINYL TARP MATERIAL	RTC 0972	OPTIONAL 18 OZ. VINYL TARP MATERIAL	\$ 66.13
DAVIS BODY	DONOVAN 2000SR WINDOW SHADE PULL OUT TARP SYS. - MESH	RTC 0973	DONOVAN 2000SR WINDOW SHADE PULL OUT TARP SYS. - MESH	\$ 1,269.60
DAVIS BODY	UNDECK DROP SHIP TRUCK FROM FACTORY TO LITTLE ROCK, AR	RTC 0974	UNDECK DROP SHIP TRUCK FROM FACTORY TO LITTLE ROCK, AR	\$ 119.03
DAVIS BODY	ALL PRICES QUOTED F.O.B. LITTLE ROCK, AR. DELIVERY CHARGES FROM LITTLE ROCK TO YOUR DEALERSHIP OR YOUR CUSTOMER	RTC 0975	ALL PRICES QUOTED F.O.B. LITTLE ROCK, AR. DELIVERY CHARGES FROM LITTLE ROCK TO YOUR DEALERSHIP OR YOUR CUSTOMER	2.15 per mile
DAVIS BODY	10' PLATFORM DUMP WITH HEADER, PTO DRIVE (STD. TRANS.) - 84" CA ---- RLC20-05 HOIST - 10 TONS - CLASS C	RTC 0977	10' PLATFORM DUMP WITH HEADER, PTO DRIVE (STD. TRANS.) - 84" CA ---- RLC20-05 HOIST - 10 TONS - CLASS C	\$ 7,283.01
DAVIS BODY	12' PLATFORM DUMP WITH HEADER, PTO DRIVE (STD. TRANS.) - 84" CA ---- RLD-40-10 HOIST - 12 TONS - CLASS D	RTC 0978	12' PLATFORM DUMP WITH HEADER, PTO DRIVE (STD. TRANS.) - 84" CA ---- RLD-40- 10 HOIST - 12 TONS - CLASS D	\$ 8,253.72
DAVIS BODY	14' PLATFORM DUMP WITH HEADER, PTO DRIVE (STD. TRANS.) - 108" CA ---- RLD-40- 10 HOIST - 12 TONS - CLASS D	RTC 0979	14' PLATFORM DUMP WITH HEADER, PTO DRIVE (STD. TRANS.) - 108" CA ---- RLD-40- 10 HOIST - 12 TONS - CLASS D	\$ 8,536.74
DAVIS BODY	ELECTRIC OVER HYDRAULIC IN LIEU OF PTO DRIVEN	RTC 0981	ELECTRIC OVER HYDRAULIC IN LIEU OF PTO DRIVEN	\$ 1,500.00
DAVIS BODY	AIR SHIFT PTO FOR STD. TRANS	RTC 0982	AIR SHIFT PTO FOR STD. TRANS	\$ 117.70

Little Rock, AR to  
Edinburg, TX  
816.1 miles  
= \$1,754.615



## Hidalgo County Purchasing Department Request Form

In order to assist the Purchasing Department in the procurement process, please complete this form with all the pertinent information and return to the Purchasing Department in person, via facsimile to (956) 318-2629 or 292-7612 or email to: [martha.salazar@co.hidalgo.tx.us](mailto:martha.salazar@co.hidalgo.tx.us) or [darlene.betancourt@co.hidalgo.tx.us](mailto:darlene.betancourt@co.hidalgo.tx.us) (**Requests will be processed on a first come, first basis**)

Request Date: 06/07/2017	
Department: Hidalgo County Precinct 4	
Name of Approving Elected Official/Department Head/Supervisor: Joseph Palacios	
Delivery Location: 1051 Doolittle Rd. Edinburg Tx, 78542	
Point of Contact: Nick Perez	Contact Phone Number: 956-383-3112
	Contact Fax Number: 956-381-5905
Contact E-Mail: <a href="mailto:nick.perez@co.hidalgo.tx.us">nick.perez@co.hidalgo.tx.us</a>	
Budget Account Number: 7-1350-431-00-124-153-0-752	
Signature of Approving Elected Official/Department Head/Supervisor: 	
Estimated Date Goods/Services are required: 08/01/2017	
Goods/Services Description: (Please provide detailed information (specifications) of the Goods/Services being requested) use additional sheets if required. <ul style="list-style-type: none"><li>• 2017- F250 Four Door Regular Truck Bed White</li></ul>	
<b>FOR PURCHASING DEPARTMENT OFFICE USE - To be completed by the Purchasing Department:</b>	
<b>Procurement Manager Notes:</b>	
<b>Assigned to Buyer:</b>	
<b>Date Assigned:</b>	
<b>Project Type:</b>	
<b>Project Number:</b>	
<b>Notified Department on:</b>	
<b>Special Instructions by Procurement Manager:</b>	



Rush Medium Duty Truck Center, Dallas  
4000 Irving Blvd., Dallas, Texas, 752475816  
Office: 214-631-2050

## Customer Proposal

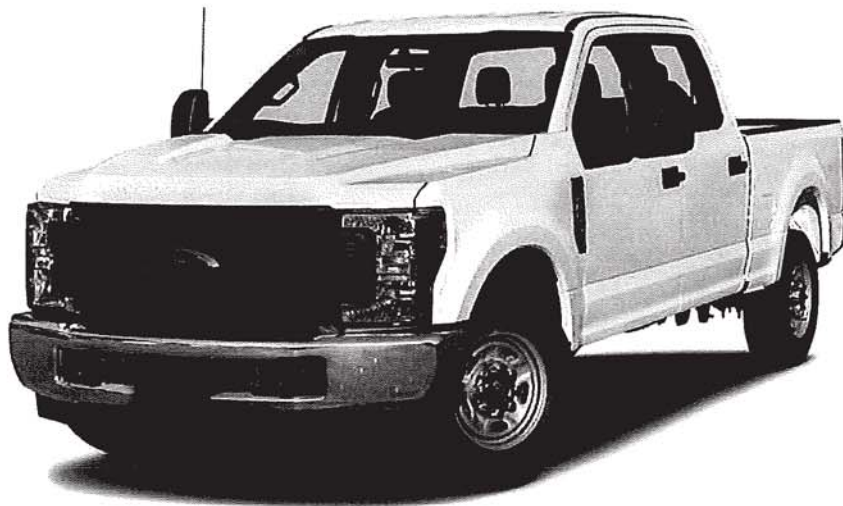
---

**Prepared by:**

Colton Kruse  
Office: 830-302-5219  
Email: [krusec@rushenterprises.com](mailto:krusec@rushenterprises.com)

**Date:** 06/05/2017

**Vehicle:** 2017 F-250 XL  
4x4 SD Crew Cab 8' box 176" WB SRW





Rush Medium Duty Truck Center, Dallas  
4000 Irving Blvd., Dallas, Texas, 752475816  
Office: 214-631-2050

**2017 F-250, SD Crew Cab**  
4x4 SD Crew Cab 8' box 176" WB SRW  
XL(W2B)  
Price Level: 755

---

## Warranty - Standard Equipment & Specs

### Warranty

#### *Basic*

Distance	36000 miles	Months	36 months
----------	-------------	--------	-----------

#### *Powertrain*

Distance	60000 miles	Months	60 months
----------	-------------	--------	-----------

#### *Corrosion Perforation*

Distance	Unlimited miles	Months	60 months
----------	-----------------	--------	-----------

#### *Roadside Assistance*

Distance	60000 miles	Months	60 months
----------	-------------	--------	-----------



Rush Medium Duty Truck Center, Dallas  
 4000 Irving Blvd., Dallas, Texas, 752475816  
 Office: 214-631-2050

2017 F-250, SD Crew Cab  
 4x4 SD Crew Cab 8' box 176" WB SRW  
 XL(W2B)  
 Price Level: 755

## Selected Options

Code	Description	MSRP
W2B	Base Vehicle Price (W2B)	\$39,135.00
600A	Order Code 600A  <i>Includes:</i> - GVWR: 10,000 lb Payload Package - Wheels: 17" Argent Painted Steel Includes painted hub covers/center ornaments. - HD Vinyl 40/20/40 Split Bench Seat Includes center armrest, cupholder, storage and driver's side manual lumbar.	N/C
99T	Engine: 6.7L 4V OHV Power Stroke V8 Turbo Diesel B20  <i>4 valve OHV. Includes manual push-button engine-exhaust braking and intelligent oil-life monitor.</i> <i>Includes:</i> - Dual 78-AH 750 CCA Batteries - 48 Gallon Fuel Tank	\$8,795.00
44W	Transmission: TorqShift 6-Speed Automatic  <i>(6R140). Includes SelectShift.</i>	N/C
X3H	Electronic-Locking w/3.31 Axle Ratio	\$390.00
STDGV	GVWR: 10,000 lb Payload Package	Included
TBM	Tires: LT245/75Rx17E BSW A/T	\$165.00
64A	Wheels: 17" Argent Painted Steel  <i>Includes painted hub covers/center ornaments.</i>	Included
A	HD Vinyl 40/20/40 Split Bench Seat  <i>Includes center armrest, cupholder, storage and driver's side manual lumbar.</i>	Included
176WB	176" Wheelbase	STD
96V	XL Value Package  <i>Includes:</i> - 4.2" Center-Stack Screen - Radio: AM/FM Stereo/Single-CD/MP3 Player Includes 6 speakers. - Bright Chrome Hub Covers & Center Ornaments - Chrome Front Bumper - Chrome Rear Step Bumper - Steering Wheel-Mounted Cruise Control	\$720.00
90L	Power Equipment Group  <i>Deletes passenger-side lock cylinder. Includes upgraded door trim panel.</i> <i>Includes:</i> - Accessory Delay - Trailer Tow Mirrors w/Power Heated Glass Includes manual telescoping, heated convex spotter mirror and integrated clearance lamps/turn signals. - Perimeter Alarm - Power Locks - Power Tailgate Lock - Power Front & Rear Seat Windows Includes 1-touch up/down driver/passenger window. - Remote Keyless Entry	\$1,125.00
17X	FX4 Off-Road Package	\$295.00



Rush Medium Duty Truck Center, Dallas  
 4000 Irving Blvd., Dallas, Texas, 752475816  
 Office: 214-631-2050

2017 F-250, SD Crew Cab  
 4x4 SD Crew Cab 8' box 176" WB SRW  
 XL(W2B)  
 Price Level: 755

## Selected Options (cont'd)

Code	Description	MSRP
	<i>Includes:</i> - Hill Descent Control - Colored Front & Rear Rancho Branded Shocks - Transfer Case & Fuel Tank Skid Plates - Unique FX4 Off-Road Box Decal	
41P	Transfer Case & Fuel Tank Skid Plates	Included
213	4x4 Electronic-Shift-On-The-Fly (ESOF)	\$185.00
	<i>Includes manual-locking hubs and auto rotary control on instrument panel.</i>	
67D_	Extra Heavy-Duty 220 Amp Alternator	N/C
PAINT	Monotone Paint Application	STD
66S_	Upfitter Switches (6) w/99T	\$165.00
	REQUIRES Dual Alternators (67A) when ordered with 110V/400W Outlet (43C) and Snow Plow Pkg. (473) or Snow Plow/Camper Pkg. (47B). <i>Located in overhead console.</i>	
585_	Radio: AM/FM Stereo/Single-CD/MP3 Player	Included
	<i>Includes 6 speakers.</i>	
91M	SYNC Communications & Entertainment System	\$365.00
	<i>Includes enhanced voice recognition, 911 Assist, 4.2" LCD screen in center stack, AppLink, 1 smart-charging USB port and steering wheel audio controls.</i>	
525_	Steering Wheel-Mounted Cruise Control	Included
425	50-State Emissions System	STD
AS_04	Medium Earth Gray	N/C
Z1_01	Oxford White	N/C
SUBTOTAL		\$51,340.00
Destination Charge		\$1,295.00
TOTAL		\$52,635.00



[Administration](#)

[RFQ](#)

[Reports](#)

[Shop](#)

## Vendor Contract Information

[Back](#)

Search:

- All
- Vendor Discounts Only
- Catalog Pricing Only

### Refine Your Search:

Vendors

Rush Truck Centers of Texas, LP[X]

Price Range

Show all prices

Category

None Selected

Contract

None selected

### Additional Searches:

[Search by Vendor](#)

[Browse Contracts](#)

[Additional Resources](#)

**Vendor Name:** Rush Truck Centers of Texas, LP

**Address:** 555 I.H. 35 South  
New Braunfels, TX 78130

**Phone Number:** (830) 302-5254

**Email:** neubauerd@rushenterprises.com

**Website:** <http://www.rushtruckcenters.com>

**Federal ID:** 74-2786264

**Contact:** Drew Neubauer

**Accepts RFQs:** Yes

**Minority Owned:** No

**Women Owned:** No

**Service-Disabled Veteran Owned:** No

**EDGAR:** Yes

**Contract Name:** Vehicles, Heavy Duty Trucks, Police Motorcycles, Part

**Contract Description:** Compact, mid-size and full size sedans; crossover; sp pickup; passenger/cargo van; law enforcement vehicle trucks/tractors; program vehicles; repair parts/service

**Contract#:** 521-16

**Effective Date:** 12/01/2016

**Expiration Date:** 11/30/2019

**Service Fee:** Vehicles purchase orders are subject to a \$400 service

**Payment Terms:** Net 30 days

**Delivery Days:** 90

**Shipping Terms:** Pre-paid and added to invoice

**Freight Terms:** FOB Destination

**Ship Via:** Common Carrier

**Region Served:** All Texas Regions

**States Served:** All States

**Contract Exceptions:** The term "program vehicle" refers to a factory owned demonstration and test drive purposes throughout the considered a used vehicle. Program vehicles do not have an Origin (MCO) as that only applies new vehicles. Program vehicles purchased from car rental agencies, again considered year-old lease returns with a years' worth of mileage (1