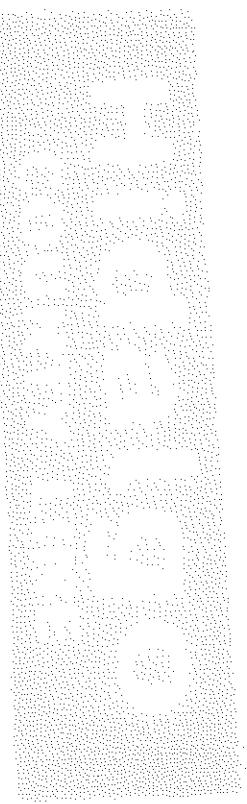


10 A



Hidalgo County Sheriff's Office 2017 Overview

Hidalgo County Sheriff's Office

Calls for Service

- FY 2013 : 107,999
- FY 2014 : 106,532
- FY 2015 : 109,594
- FY 2016 : 113,988
- FY 2017 : 119,148

4.53% Increase from 2016 to 2017

Hidalgo County Sheriff's Office Communications

911 Calls Received

- 2013: 169760
- 2014: 196,066
- 2015: 255,798
- 2016: 169,193
- 2017: 136,313

19.43% Decrease from 2016 to 2017

HCSO Number of Dispatched Calls

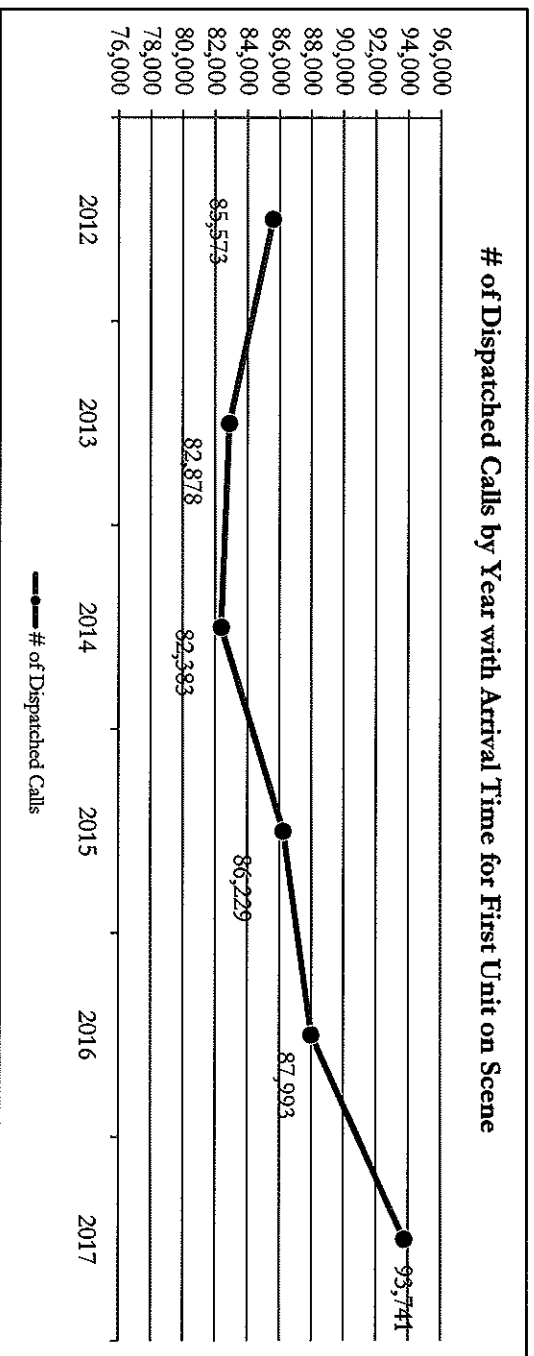
TABLE 2: NUMBER OF DISPATCHED CALLS BY YEAR WITH ARRIVAL TIME FOR FIRST UNIT ON SCENE

	2012	2013	2014	2015	2016	2017
# of Dispatched Calls	85,573	82,878	82,383	86,229	87,993	93,741

NOTES: Response Time: From address accept to first unit on scene

Time analysis includes calls for service dispatched and does not include cancelled calls for service, duplicate calls, calls that were not dispatched or calls that do not have an arrival time.

FIGURE 2



HCSO Patrol Response Times

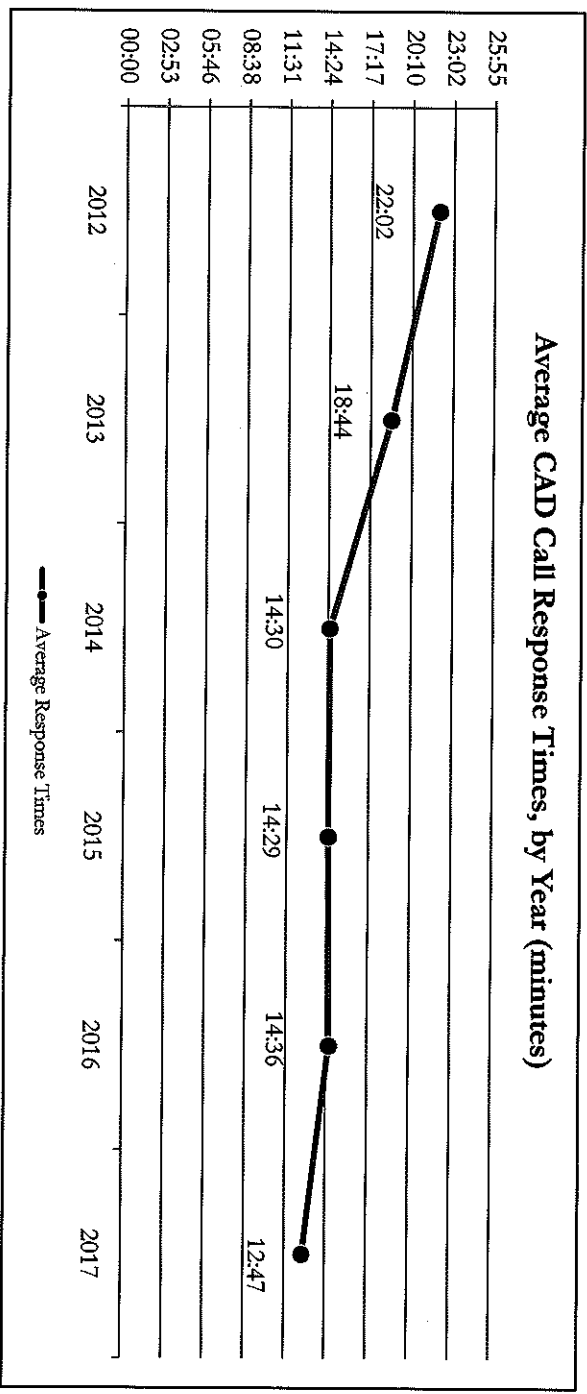
TABLE 1: AVERAGE CAD CALL RESPONSE TIMES, BY YEAR (minutes)

	2012	2013	2014	2015	2016	2017
Average Response Times	22:02	18:44	14:30	14:29	14:36	12:47

NOTES: Response Time: From address accept to first unit on scene

Time analysis includes calls for service dispatched and does not include cancelled calls for service, duplicate calls, calls that were not dispatched or calls that do not have an arrival time.

FIGURE 1



Hidalgo County Sheriff's Office

PART I CRIME COMPARISON FROM 2016 TO 2017*

	2016	2017*	% CHANGE
Murder	10	23	130.00
Rape	133	139	4.51
Robbery	129	104	-19.38
Aggravated Assault	313	352	12.46
TOTAL VIOLENT CRIMES	585	618	5.64
Burglary	1417	1173	-17.22
Theft	2813	2423	-13.86
Auto Theft	298	224	-24.83
TOTAL PROPERTY CRIMES	4528	3820	-15.64
TOTAL INDEX CRIMES	5113	4438	-13.20

* 2017 data has not been finalized by TX DPS UCR DIVISION. All figures are subject to further analysis and revision.

Hidalgo County Sheriff's Office

CRIME COMPARISON, 2008 – 2017*

	2008	2009	% CHANGE	2010	% CHANGE	2011	% CHANGE	2012	% CHANGE	2013	% CHANGE	2014	% CHANGE	2015	% CHANGE	2016	% CHANGE	2017*	% CHANGE
Murder	24	23	-4.17	14	-39.13	20	42.86	22	10.00	15	-31.82	14	-6.67	17	21.43	10	-41.18	23	130.00
Rape**	72	81	12.50	77	-4.94	66	-14.29	65	-1.52	52	-20.00	132	153.85	122	-7.58	133	9.02	139	4.51
Robbery	181	203	12.15	156	-23.15	116	-25.64	138	18.97	126	-8.70	133	5.56	129	-3.01	129	0.00	104	-19.38
Aggravated Assault	610	778	27.54	393	-49.49	323	-17.81	301	-6.81	245	-18.60	277	13.06	416	50.18	313	-24.76	352	12.46
TOTAL VIOLENT CRIMES	887	1085	22.32	640	-41.01	525	-17.97	526	0.19	438	-16.73	556	26.94	684	23.02	585	-14.47	618	5.64
Burglary	2678	2798	4.48	2835	1.32	2498	-11.89	2435	-2.52	2321	-4.68	1862	-19.78	1517	-18.53	1417	-6.59	1173	-17.22
Theft	3731	3956	6.03	3876	-2.02	3779	-2.50	3556	-5.90	3109	-12.57	2776	-10.71	2699	-2.77	2813	4.22	2423	-13.86
Auto Theft	646	533	-17.49	497	-6.75	411	-17.30	282	-31.39	300	6.38	285	-5.00	303	6.32	298	-1.65	224	-24.83
TOTAL PROPERTY CRIMES	7055	7287	3.29	7208	-1.08	6688	-7.21	6273	-6.21	5730	-8.66	4923	-14.08	4519	-8.21	4528	0.20	3820	-15.64
TOTAL INDEX CRIMES	7942	8372	5.41	7848	-6.26	7213	-8.09	6799	-5.74	6168	-9.28	5479	-11.17	5203	-5.04	5113	-1.73	4438	-13.20

* 2017 data has not been finalized by TX DPS UCR DIVISION. All figures are subject to further analysis and revision. Rape after 2014 is higher due to the change in definition.

**PREVIOUS UCR DEFINITION OF RAPE: "The carnal knowledge of a female forcibly and against her will."

**CURRENT UCR DEFINITION OF RAPE: "Penetration, no matter how slight, of the vagina or anus with any body part or object, or oral penetration by a sex organ of another person, without the consent of the victim."

Drug Cases Cleared by Arrest

- 2013: 333
- 2014: 429
- 2015: 455
- 2016: 582
- 2017: 552

Hidalgo County Adult Detention Facility

Total Average Population

Comparison 2015 and 2016

	<u>2015</u>	<u>2016</u>	<u>2017</u>
• Yearly Average	1370.64	1229.38	1287.29
• Yearly New Bookings	19,545	19,172	21,390
• Daily average # of inmates out of county	156.02	113.71	199.19
• Money spent for out of county inmates	\$2.8 Million	\$2.1 Million	\$3.8 Million

HCSO Training Academy

2015

2016

2017

- Over 3863 students trained totaling more than 5558 hours of instruction
- Over 4660 students trained totaling 4598 hours of instruction
- Over 6055 students trained totaling 8453 hours of instruction
- Training is provided free of charge for our law enforcement partners, saving them on average \$100.00 per officer for every 8 hours of training
- In 2017, the HCSO Training Academy taught more than 40 active shooter courses for about 1200 civilians.
- In 2017, there were 6 jailer academies to include a basic jail course for peace officers.

HCSO Training Academy

Tactical Medic Program

- Creation of the first HCSO Tactical Medic Program which certified various Deputies and Jailers as Emergency Medical Technicians.
- These Deputies are now able to provide critical emergency care if needed.
- This is the only program of its kind in this region, at the only training academy in the state authorized to certify LEO's as EMT's, ECA's & Canine Medics.



Uniformed Services: Civil Process

Total Process Served (Subpoenas, citations, summons, etc)

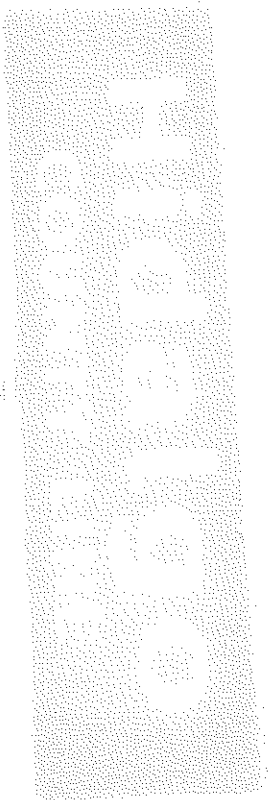
- 2013: 29,275
- 2014: 28,936
- 2015: 24,389
- 2016: 22,966
- 2017: 23,238

Hidalgo County Sheriff's Office

Administration Division

Through the support and authorization of Hidalgo County Commissioners Court, Sheriff Guerra worked with the Office of Budget and Management for much needed infrastructure and capitol improvement projects to include:

- Technology upgrades
- Physical security improvements to Sheriff's Office Facilities
- Vehicle replacement program
- Equipment and other upgrades
- Establishing Analytic personnel for T.T.I.C. and T.A.G.



Thank You

