

Introduction

The exhibit attached shows a HCRMA Project Location Map with the following short/long-term strategic priorities:

- 365 Tollway (Segments 1 – 4) [by HCRMA]
- International Bridge Trade Corridor (Segments 1 – 3) [by HCRMA]
- US 83 Relief Route (Segment 1) [by TxDOT]
- State Highway 68 (Segments 1 and 2) [by TxDOT]
- Farm-to-Market 1925 (Segments 1 and 2) [by TxDOT / CCRMA / HCRMA]
- Section A (West) and Section C (long-term priorities) [by HCRMA]
- Other

1.0 365 Tollway (formerly State Highway 365) (HCRMA)

Strategic importance: Provides a much-needed overweight-rated highway facility to move goods east/west between the Anzalduas, Hidalgo, and Pharr-Reynosa International Bridges.

The 365 Project consists of three phases of construction of toll and non-toll improvements of independent utility from FM 1016 / Conway Ave to US 281 / Military Highway for project length of 17.4 miles between two crucial port of entry within Hidalgo County (Anzalduas Bridge and Pharr-Reynosa International Bridge).

2.0 International Bridge Trade Corridor (HCRMA)

Strategic importance: Provides traffic with a connection to I-2 and all points north in an overweight-rated highway facility to move goods from the Donna-Alliance and Progreso International Bridges.

IBTC Segments 1 - 3 consists of two phases of construction of toll improvements of independent utility from the Interchange with SH 365 near FM 3072 / Dicker Road to I-2 and from the Valley View Interchange to FM 493 for project length of 13.2 miles.

Phase 1 construction will consist of Segment 1 and 2 being initially built as a frontage road non-toll facility, while constructing Segment 3 as a 1+1 lane connector road (1 lane each way) for connection between the Valley View Interchange and FM 493. Phase 2 construction (to be later undertaken by the HCRMA) will consist of 2+2 or 3+3 tollroad main lanes.

3.0 Farm-to-Market 1925 (TxDOT PHR / CCRMA / HCRMA)

Strategic importance: First collaboration between HCRMA and Cameron County RMA (CCRMA) which provides a parallel highway facility to I-2 from I-69C (US 281) to I-69E (US 77) in the rapidly developing north region of Hidalgo County that would connect to Cameron County's outer Loop developments to the East.

FM 1925 between I-69C (US 281) and I-69E (US 77) is a vital parallel connection to I-2 and it is the first project to bring HCRMA into collaboration with CCRMA.

4.0 US 83 Relief Route (TxDOT PHR)

Strategic importance:

The US 83 Relief Route consists of two phases of construction within a usual 350-foot-wide to a maximum 450-foot-wide right-of-way (ROW). The project begins approximately 1.0 mile east of FM 886 (El Faro Road) and runs east to approximately 0.50 mile west of Showers Road. The total project length is approximately 8.9 miles and Phase 1 will consist of frontage roads while an optional Phase 2 could be undertaken by the HCRMA later to construct tollroad mainlanes. Phase 1 is fully funded by TxDOT and was let 07/2015.

5.0 State Highway 68 (TxDOT PHR)

Strategic importance: Creates a north-south parallel corridor to US 281 to relieve congestion on the I-2 / I-69C interchange and provide alternative routes for development in this rapidly developing area.

SH 68 is a proposed 22-mile new road that will connect I-2 to I-69C between Alamo and Donna and run north to I-69C/US 281 north of Edinburg.

6.0 Overweight Corridor (HCRMA and TxDOT)

Strategic importance: provides regional competitiveness to our international bridge bridges and surrounding trucking logistic support in the form of cold storage facilities and trade zones.

The HCRMA allows shippers to securely order specialized overweight permits online. The permits cover travel over the Hidalgo County roads listed below for vehicles weighing no more than the Mexican Legal Weight Limit or 125,000 lbs for which proof of certified weight measurement is required before a permit may be requested and utilized.

7.0 Others

Monte Cristo Expansion

This will serve as the future corridor to connect I-69 C to I-69 E. It will connect our new higher education facility, Texas A&M Higher Education Center at Tres Lagos, from the west to the future South Padre Island second causeway. Along the route, we have the communities of San Carlos, Elsa, Edcouch and La Villa that would benefit from the opportunity zone, as they are the most economically disadvantaged areas in Hidalgo County. We also have 2 potential green energy projects in this area that would benefit from the zone designation.

SH 68

This is an area that would benefit from the future SH68 connector. The synergy between those routes, along with the opportunity zone, would be a catalyst for development.

Southern Tracts

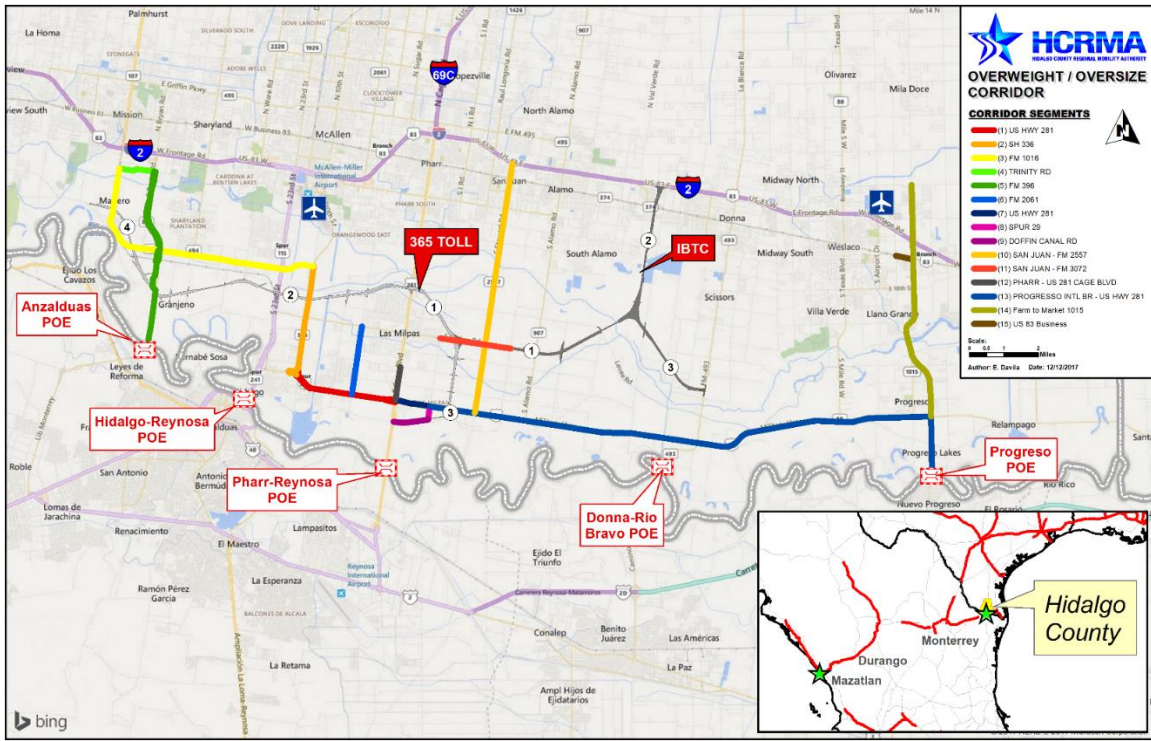
Connecting international ports of entry with the new overweight corridor with the Opportunity Zone will be an opportunity to attract more trade and commerce to Texas.

Western route

The potential outer loop project encompasses large energy industries, potential green energy projects, and a potential 2nd rail crossing with Mexico. New Relief route to Starr County to relieve congestion.

I 69 Central tracts

Potential for more industrial development, area provides access to healthcare facilities and higher educational facilities.



Project Name	Project Code	Census Tract	Opportunity Zone Qualified	Poverty Rate (%)	Unemployment Rate (%)
IBTC	0010	48215022103	Yes	37.2	8
		48215022106	Yes	30.2	11
365 Toll	0030	48215020503	Yes	27.4	13.1
		48215021302	Yes	48	11.7
		48215021303	Yes	39.1	8.1
		48215021304	Yes	29.2	8.7
		48215021305	Yes	30.2	9.2
		48215020102	Yes	31.5	11.4
Section A (West)	0040	48215024204	Yes	49.7	13.8
		48215024205	Yes	29.5	12.7
		48215020201	Yes	31.8	11.6
Section C	0060	48215024108	Yes	51.7	8.1
		48215024114	Yes	57.6	22
		48215023503	Yes	24.7	8.4
		48215024112	Yes	74.8	13.9
		48215024201	Yes	52.1	10
		48215024203	Yes	23.8	9.4
		SH 68 Phase 1	0070	48215021901	Yes
48215022104	Yes			54.7	10.5
48215023507	Yes			39	9.2
48215023512	Yes			40.2	7.6
48215023513	Yes			44.6	13.5
48215023514	Yes			48.9	14.2
48215023515	Yes			30.7	7.6
Section F	0080	48215023511	Yes	52.5	9.8
		48215024302	Yes	59.8	29.3
		48215024404	Yes	25.8	9.2
		48215024500	Yes	51.5	13.1
		48215024600	Yes	41.1	14.1
Section E	0090	48215022204	Yes	35.6	12.7
		48215022800	Yes	42.4	10
		48215023000	Yes	30.7	11.3
		48215023102	Yes	39.1	14
FM 1925	0100	48215023600	Yes	35.9	12.8
		48215024403	Yes	44.3	18.4
		48215024000	Yes	34.1	7.5
		48215023504	Yes	28.7	7.5
		48215024111	Yes	32.5	7.8
I-69C	N/A	48215021701	Yes	24.7	8
		48215021702	Yes	22.1	13.9
		48215023801	Yes	23.2	8