

HDR



New Hidalgo County Courthouse

Schematic Design Presentation

March 20, 2018





SCHEMATIC DESIGN REPORT

New Hidalgo County Courthouse

Hidalgo County

Edinburg, Texas

Revised March 16, 2018



TABLE OF CONTENTS

1	EXECUTIVE SUMMARY
2	CODE ANALYSIS
3	SITE / CIVIL / LANDSCAPE
4	ARCHITECTURAL
5	INTERIORS
6	STRUCTURAL
7	MECHANICAL
8	ELECTRICAL / IT
9	ELECTRONIC SECURITY
10	AUDIO VISUAL
11	COURTROOM TECHNOLOGY
12	SPECIFICATIONS
13	PRELIMINARY ESTIMATE OF CONSTRUCTION COST
14	UPDATED PROGRAM
15	ACKNOWLEDGMENTS





Accomplished During SD

SITE:

01

Progressed Design

02

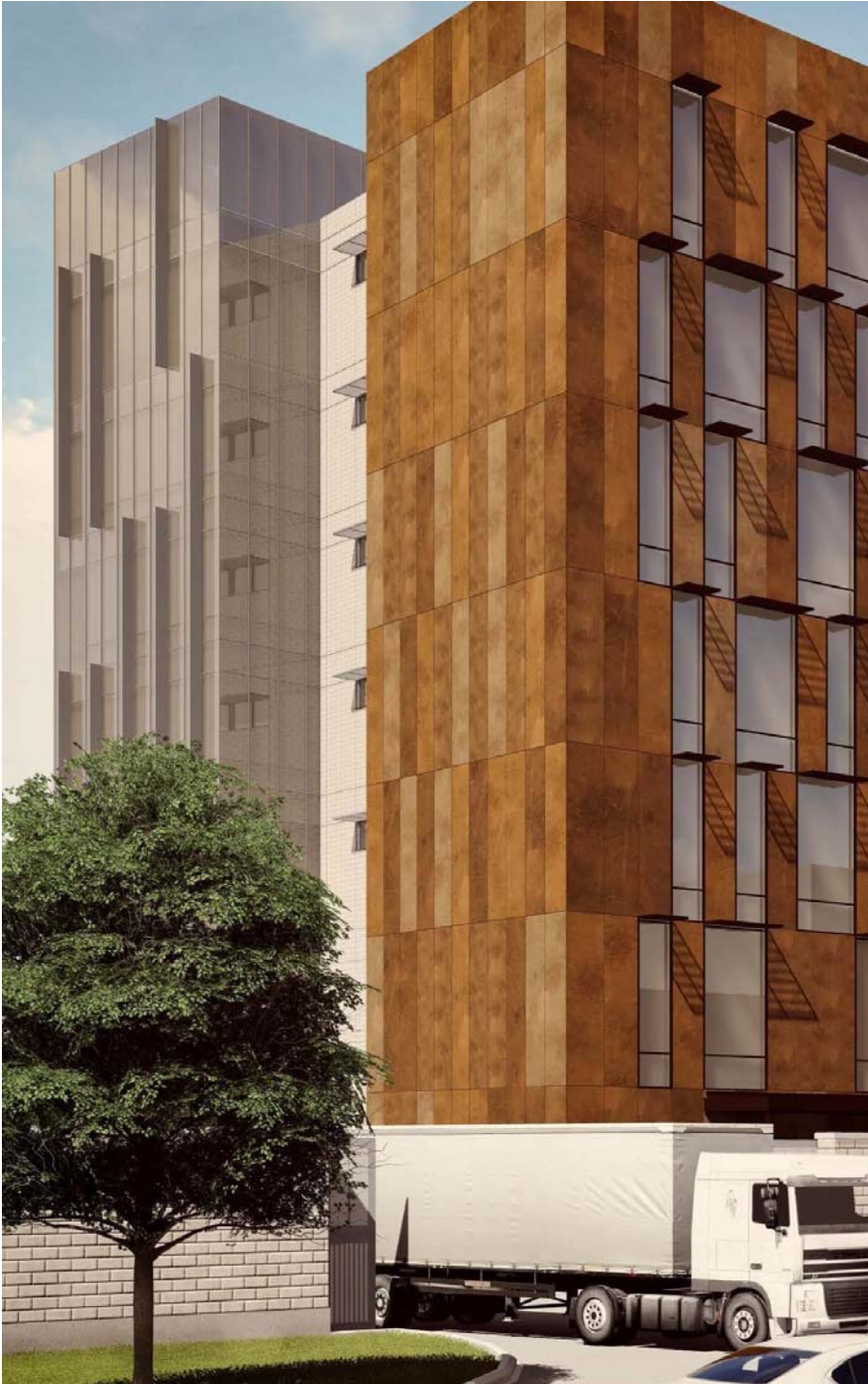
Initiated Geotechnical Survey

03

Initiated Utilities Survey

04

Initiated Topographical Survey



Accomplished During SD

BUILDING:

04 Program Verified

05 Discipline, Code Coordination

06 Plans Refined

07 Departmental Sign Off

08 Updated Cost Estimate

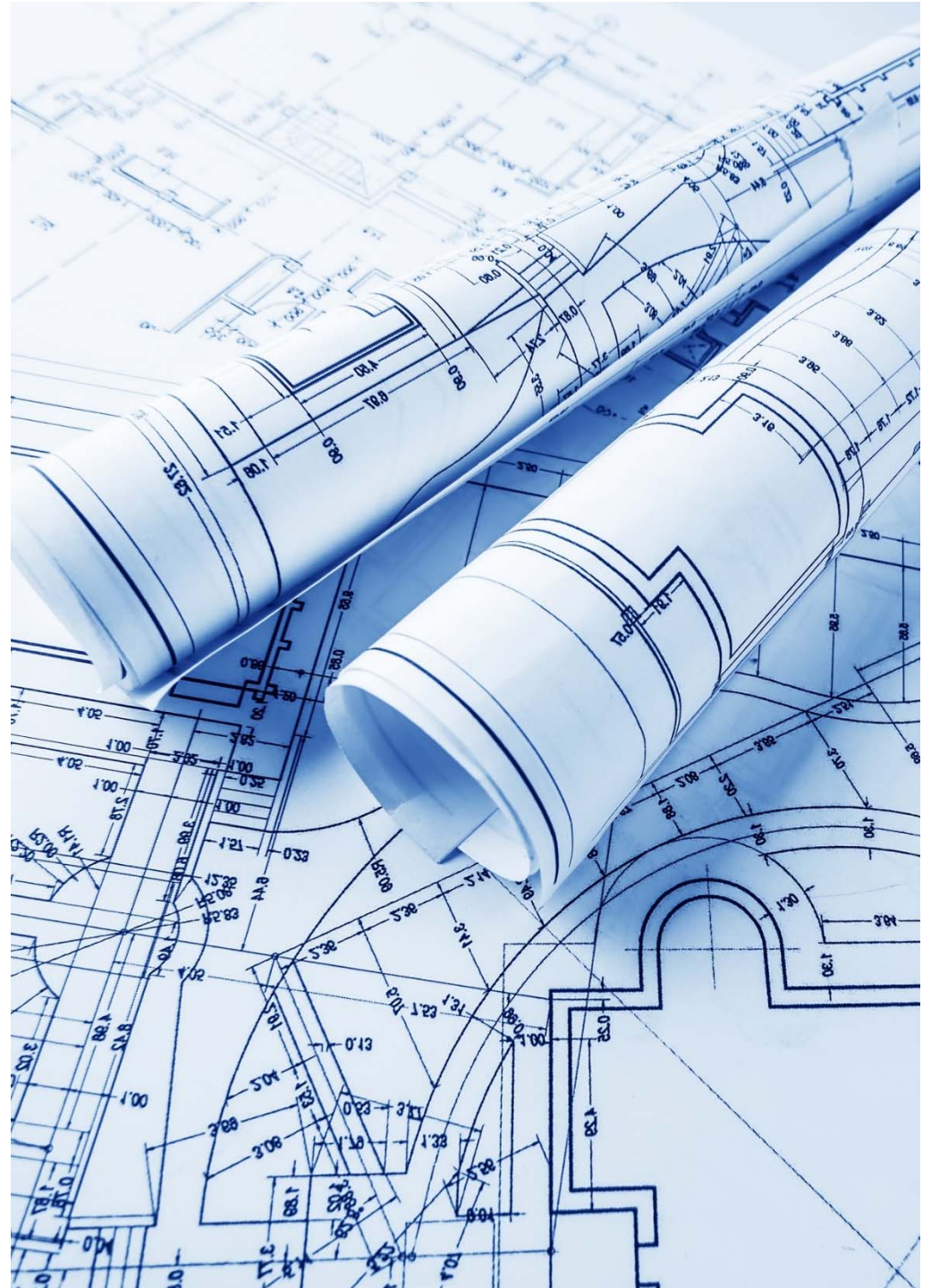
04. Program Verified

- 2015 quantities revisited
- Departments cooperative
- Departments included:
 - 13th Court of Appeals
 - District Courts
 - District Clerk (incl. jury pool function)
 - County Courts
 - County Clerk
 - District Attorney (Grand Jury, day offices)
 - Sheriff (bldg security, defendant-in-custody holding and movement)
 - Information Technology
 - Facilities
 - Domestic Relations (orig. in add. alt. #1)
 - Public Defender (in add. alt. #1)
 - Indigent Defense (in add. alt. #1)
 - Adult Probation (day offices, in add. alt. #1)

	Rev. Exh. E	02/06/18
Main Building Total	332,977	310,081
Vehicle Sallyport	17,500	17,500
Secure Parking	19,900	19,900
Garage Total	37,400	37,400
Central Utility Plant	4,000	4,000
Central Utility Plant Total	4,000	4,000
TOTAL BASE SQUARE FOOTAGE	374,377	351,481
Public Defender (Alt. #1)	0	6,576
Indigent Defense (Alt. #1)	0	2,520
Adult Probation (Alt. #1)	0	1,653
Total Alternate #1	0	10,750
Level 3 Roof Garden (Alt. #2)		
Total Alternate #2	0	0

05. DISCIPLINE, CODE COORDINATION

- Over 50% of fee staying in RGV
- Disciplines on board for SD:
 - Architecture
 - Interior Design
 - Mechanical Engineering
 - Electrical Engineering
 - Plumbing Design
 - Structural Engineering
 - Life Safety
 - Landscape Architecture
 - Civil Engineering
 - Information Technology
 - Electronic Security
 - Audio Visual Design
 - Courtroom Technology
 - Cost Estimating



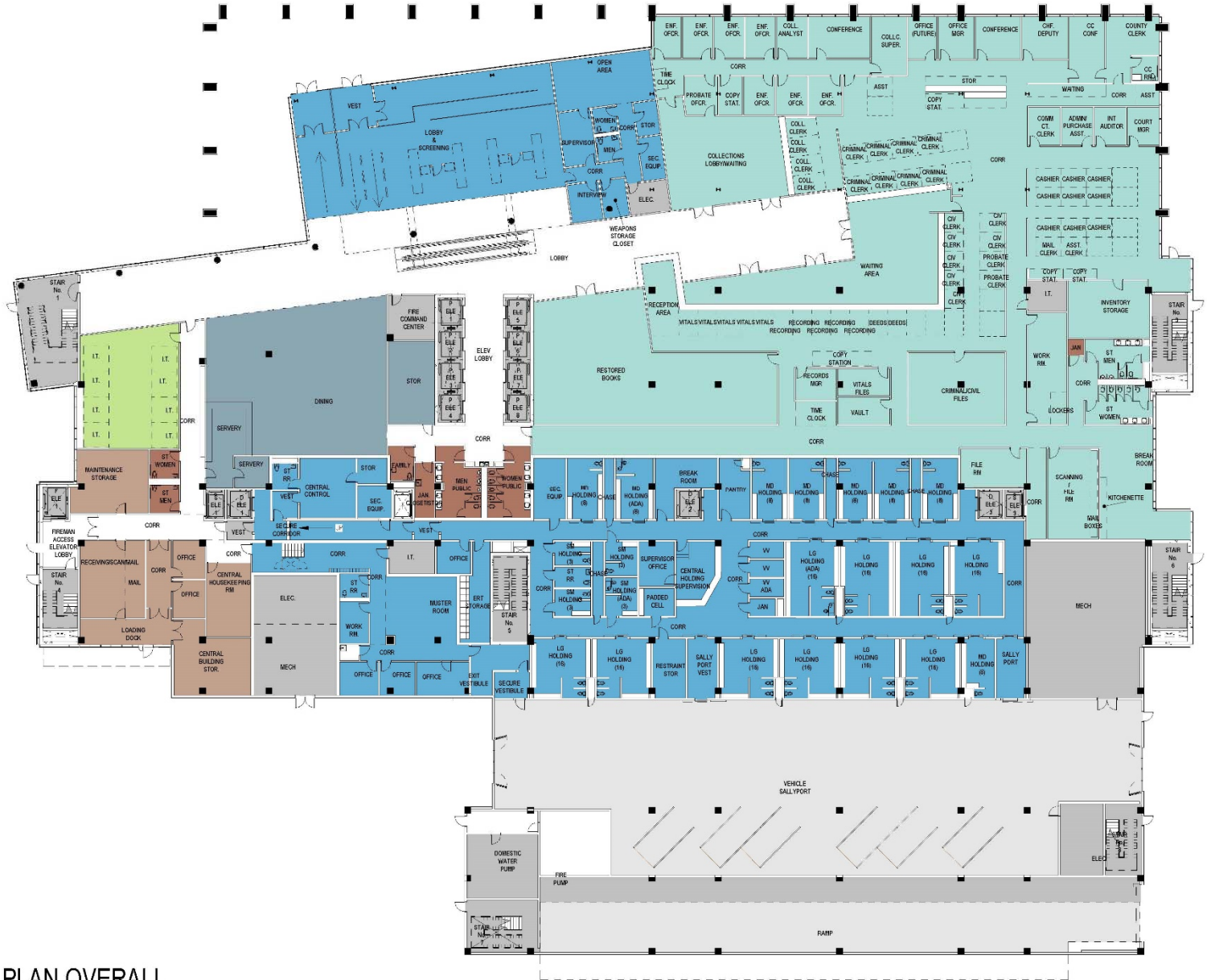


06. PLANS REFINED
07. DEPARTMENTAL SIGN OFF



DEPARTMENT LEGEND

- ANCILLARY
- BUILDING SUPPORT
- CIRCULATION
- COUNTY CLERK
- EXTERIOR AREAS
- FACILITIES
- IT
- LOBBY
- SHERIFF SECURITY



1

FIRST FLOOR PLAN OVERALL

1/32" = 1'-0"

DEPARTMENT LEGEND

- ANCILLARY
- BAR ASSOCIATION
- BUILDING SUPPORT
- CIRCULATION
- COURT OF APPEALS
- DISTRICT ATTORNEY
- DISTRICT CLERK
- DOMESTIC RELATIONS
- EXTERIOR AREAS
- IT
- LOBBY



1

SECOND FLOOR PLAN OVERALL

1/32" = 1'-0"

DEPARTMENT LEGEND

- ANCILLARY
- BUILDING SUPPORT
- CIRCULATION
- COURTS
- SHERIFF SECURITY






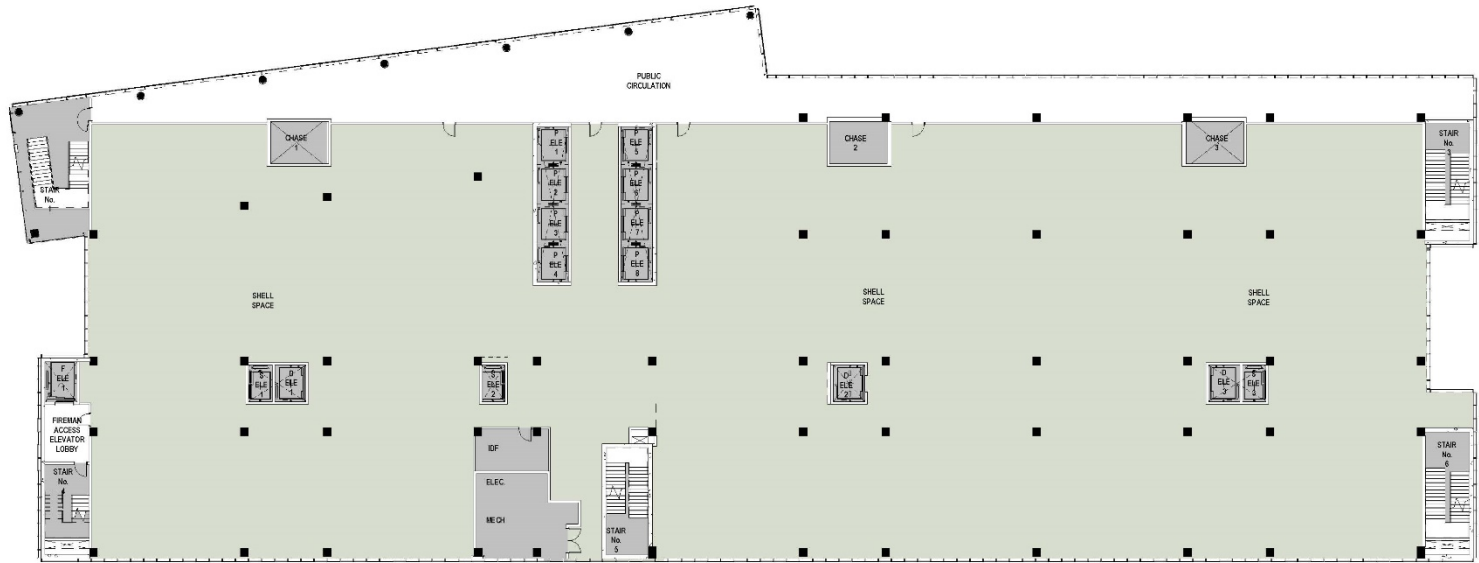
1

FOURTH FLOOR PLAN OVERALL

1/32" = 1'-0"

DEPARTMENT LEGEND

-  BUILDING SUPPORT
-  CIRCULATION
-  COURTS



1

FIFTH FLOOR PLAN OVERALL

1/32" = 1'-0"

DEPARTMENT LEGEND

- ANCILLARY
- BUILDING SUPPORT
- CIRCULATION
- COURTS
- SHERIFF SECURITY



1

SIXTH FLOOR PLAN OVERALL

1/32" = 1'-0"

DEPARTMENT LEGEND

- ANCILLARY
- BUILDING SUPPORT
- CIRCULATION
- COURTS
- SHERIFF SECURITY



1

SEVENTH FLOOR PLAN OVERALL

1/32" = 1'-0"

GROSS PROJECT AREA

NAME		REV. EXH. E.	REV. PROGRAM	PLAN AREA
MAIN BUILDING TOTAL		332,977 SF	310,081 SF	324,544 SF
SALLYPORT/GARAGE FLOOR	1 ST	17,500 SF	17,500 SF	15,814 SF
SALLYPORT/GARAGE FLOOR	2 ND	19,900 SF	19,900 SF	19,200 SF
CENTRAL PLANT BLDG		4,000 SF	4,000 SF	4,284 SF
TOTAL BASE PROJECT AREA:		374,377 SF	351,481 SF	363,842 SF
3 RD FLOOR OFFICES (Alt.#1)		0 SF	10,750 SF	12,234 SF
3 RD FLOOR OUTDOOR (Alt.#2)		0 SF	0 SF	5,472 SF

08. Updated Cost Estimate

SCHEMATIC DESIGN COST ESTIMATE SUMMARY	
Base Project Construction Cost:	\$ 109,880,620
Alternate 1 Construction Cost:	\$ 2,976,930
Alternate 2 Construction Cost:	\$ 377,940



CONCLUSION

- Plan area is under target while still providing all requirements + additional growth
- Cost estimate is 3% under budget
- Requesting approval on SD, NTP to DD

HDR