



# Construction of New Courthouse

- ❖ Due to break ground on September 4, 2018
- ❖ Duration: Approx. 30 months



## Permanent closure of Closner Blvd. & Main Courthouse Parking Lot

- Effective September 4, 2018
- Portion of Closner Blvd. in front of the courthouse will be permanently closed
- Loss of approx. 300 Parking Spaces
- No southern access to Courthouse



# Utilization Study & Parking Study Provided by Project Manager Jacobs Engineering

- First full week of February 2018
- Drone Footage taken of all Courthouse and Courthouse Annex Parking Lots
- Once at approx. 8:30 a.m. and then again at approx. 3:30 p.m. to determine utilization numbers
- Jacobs Engineering provided a Parking Study in April of 2018

# The Numbers

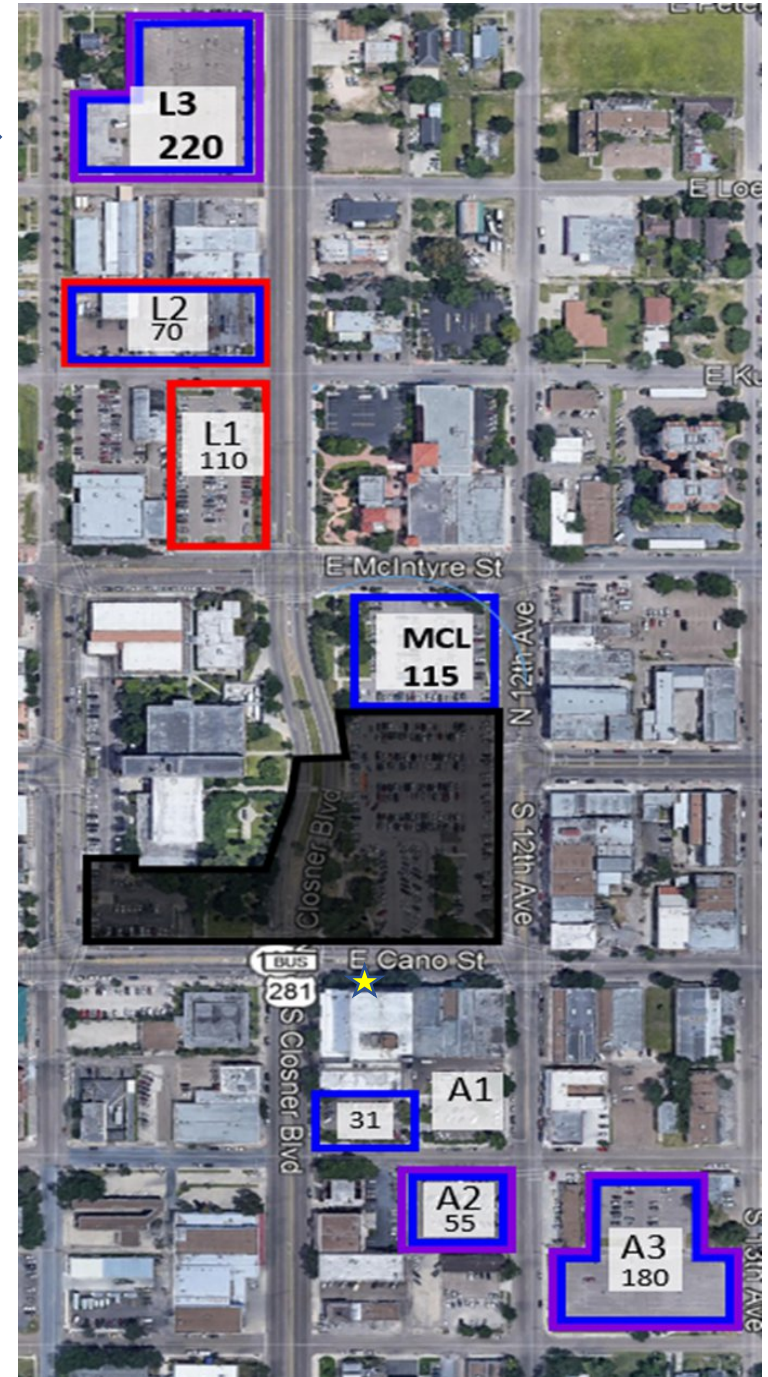
- Courthouse & Courthouse Annex Parking Lots had a minimum of 300 spaces available in the surrounding areas at any given time.
- Total Number of spaces available in all Parking Lots:  
**Approx. 1085**
- Peak Usage: First Tuesday of the month at 8:30 a.m.:  
**340 parking spaces available**
- Current County owned properties can temporarily compensate for permanent loss of MCL during the construction of the New Hidalgo County Courthouse.

# Loss of 300 parking spaces on September 4, 2018

Courthouse Lot # 3 (L3) was completely empty throughout the week

Courthouse Annex Lot # 3 (A3) never exceeded 20% capacity

Loss of 300 spaces in MCL can be temporarily compensated for by Lots L3 & A3





# Prioritizing Parking and Parking Assignments

- If the Courthouse parking system is maintained (First come, first serve), jurors and members of the public would be forced to take the farthest parking lots on a daily basis.
- Priorities
  - Jurors
  - The General Public
  - Courthouse Employees
  - Courthouse Annex Employees



- Approx. 200 Jurors arrive on any given Monday or Tuesday morning Another 200 Jurors arrive in the afternoon on Monday
- Lot L1 and L2 will be used to accommodate Juror Only Parking
- L1 and L2 (Monday and Tuesday only) will become secured Juror Parking



# Visitors & Employees

## Visitor/ General Public Lots:

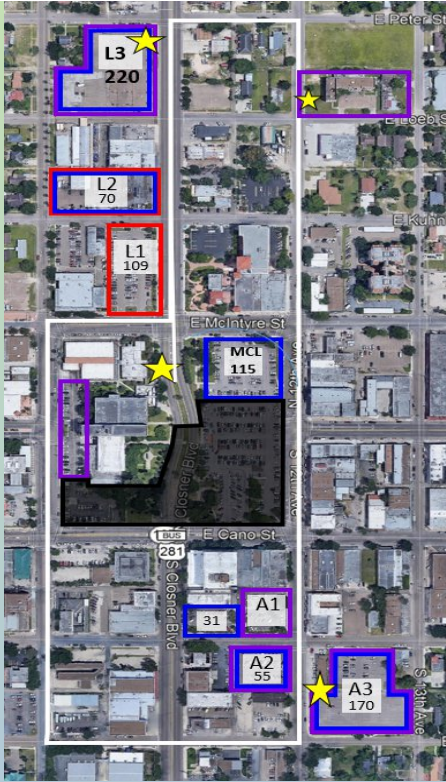
- MCL at all time (\*Employees Prohibited, Public Only Lot)
- L2 (Mon & Tues limited to 30 Minute Hidalgo County Clerk's Office Parking)
- L3:
- A1
- A2
- A3

## Employee Lots

- L3
- A2
- A3

Friday: Open Parking



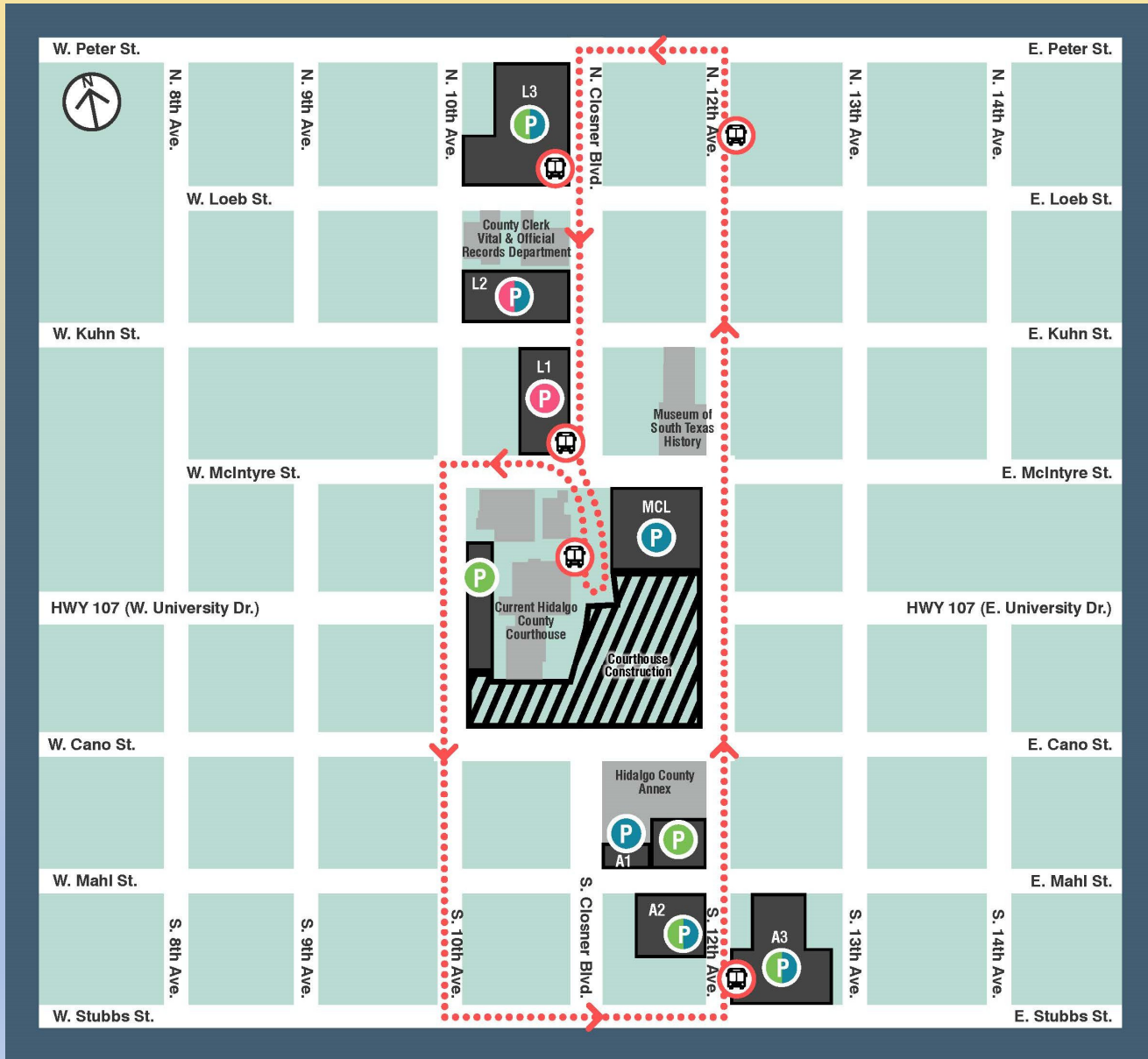


# Courthouse Shuttle System

- MOU with Valley Metro (LRGVDC)
- Route & Shuttles Stops
- 2 trolleys/buses
- (A/C, ADA Compliant, Modern Amenities)
- 3 current stops (1 Future)
- 5 minute intervals
- Federal Grant will cover:
  - 80% of the purchase price of the 2 trolleys
  - 50% of the yearly service & maintenance costs



# Proposed Hidalgo County Parking and Shuttle System



## HIDALGO COUNTY COURTHOUSE PARKING MAP & SHUTTLE ROUTE

**LEGEND**

- Courthouse Construction Area
- Courthouse Parking Lots
- Juror Parking
- General Public Parking
- Employee Parking

**MCL Main Courthouse Lot:**  
Public Parking Only  
Employees Prohibited

**L1 Courthouse Lot 1:**  
Jurors Only Mon - Thurs

**L2 Courthouse Lot 2:**  
Jurors Only Mon - Tues  
Public Parking Only Weds - Thurs  
30-Minute Vital and Official Records Dept. Parking Available

**L3 Courthouse Lot 3:**  
Employee and Public Parking

**A1 Annex Lot 1:**  
Public Parking Only  
Employees Prohibited

**A2 Annex Lot 2:**  
Employee and Public Parking

**A3 Annex Lot 3:**  
Employee and Public Parking

**FRIDAY: OPEN PARKING**

- Shuttle Stop
- Shuttle Route



# Public Outreach

Website & Social Media

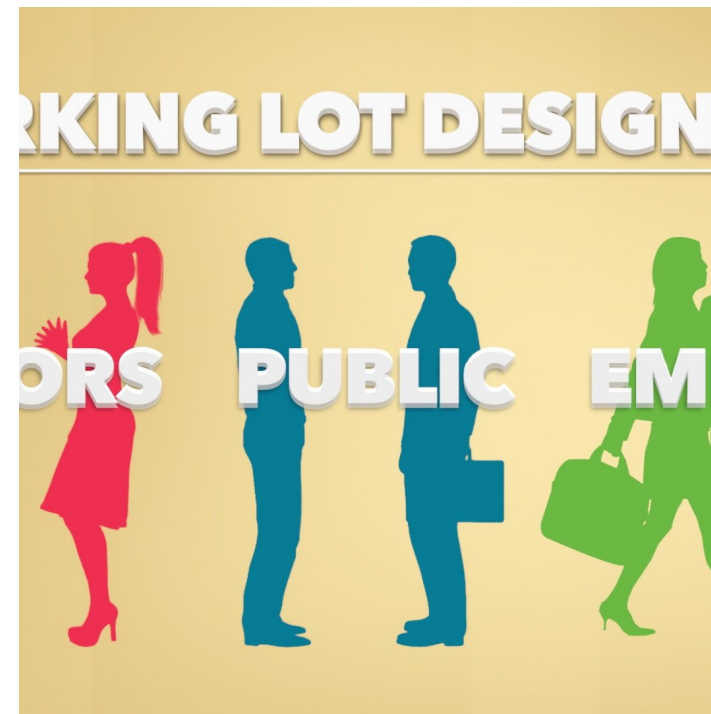
Signage notifying the public of closures and the parking map will be placed in every parking lot

News Releases & Op-Eds

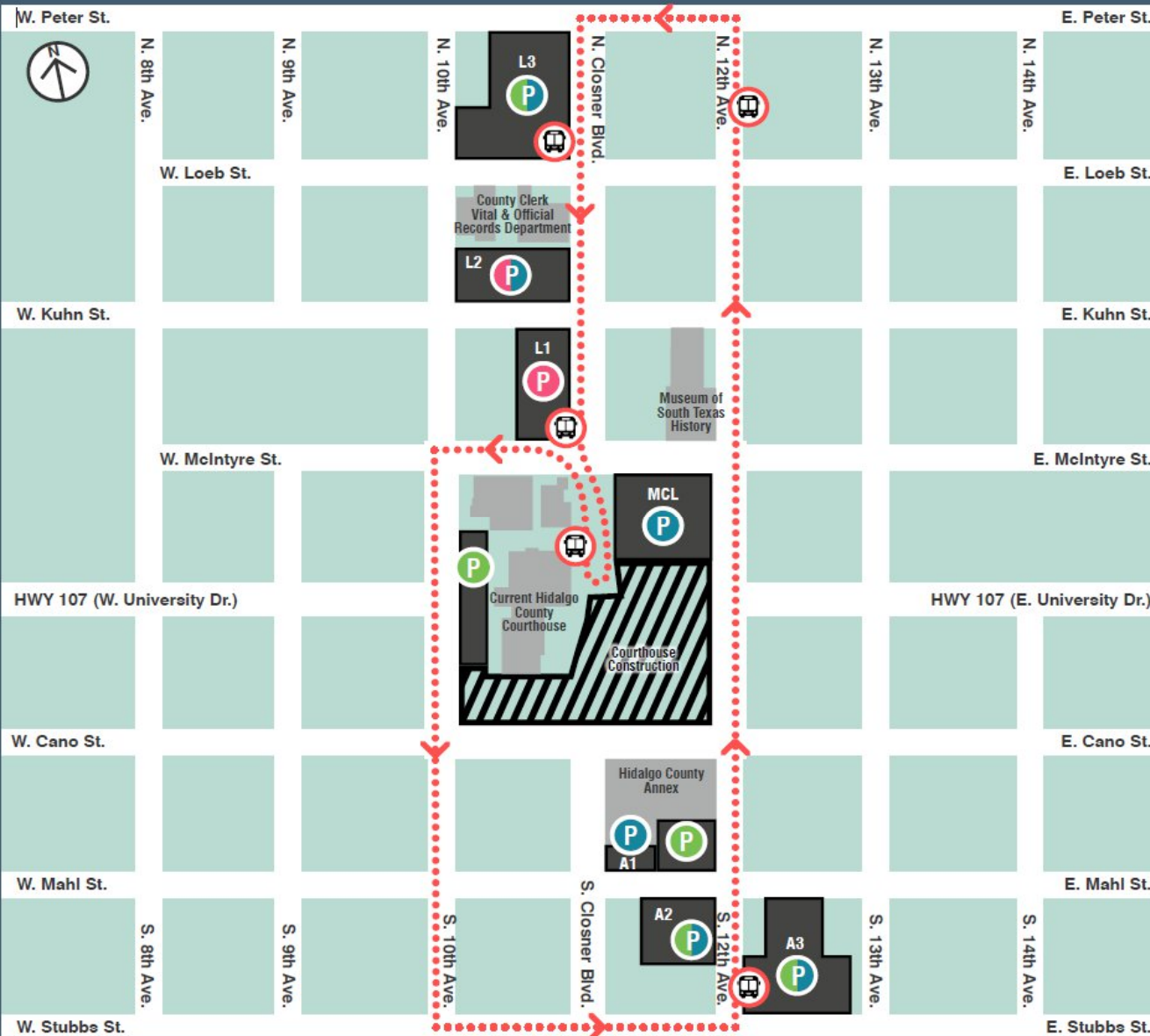
Juror Summons Notices & Flyers

Videos/PSA

Advertising



# Thank you for your time Commissioners



## HIDALGO COUNTY COURTHOUSE PARKING MAP & SHUTTLE ROUTE

### LEGEND

-  Courthouse Construction Area
-  Courthouse Parking Lots
-  Juror Parking
-  General Public Parking
-  Employee Parking
- MCL Main Courthouse Lot:**  
Public Parking Only  
Employees Prohibited
- L1 Courthouse Lot 1:**  
Jurors Only Mon - Thurs
- L2 Courthouse Lot 2:**  
Jurors Only Mon - Tues  
Public Parking Only Weds - Thurs  
30-Minute Vital and Official Records Department Parking Available
- L3 Courthouse Lot 3:**  
Employee and Public Parking
- A1 Annex Lot 1:**  
Public Parking Only  
Employees Prohibited
- A2 Annex Lot 2:**  
Employee and Public Parking
- A3 Annex Lot 3:**  
Employee and Public Parking
- FRIDAY: OPEN PARKING**
-  Shuttle Stop
-  Shuttle Route

