

# 470GLC

51 218-kg (112,916 lb.) Operating Weight



**JOHN DEERE**



# Next-cavator.

Like its highly popular predecessors, the 470GLC Excavator gets work done with smooth, one-of-a-kind efficiency. Optimized hydraulics yield more muscle, so you can move more material per gallon of fuel. A rugged EPA Final Tier 4 (FT4)/EU Stage IV diesel engine meets rigid emission regulations, enabling you to work, wherever there's work — without compromising power, reliability, or ease of operation.





Key Specifications	470GLC
Net rated power	274 kW (367 hp)
Operating weight	51 218 kg (112,916 lb.)
Digging depth	8.27 m (27 ft. 2 in.)
Arm digging force	196–201 kN (44,063–45,187 lb.)
Bucket digging force	256–286 kN (57,551–64,295 lb.)

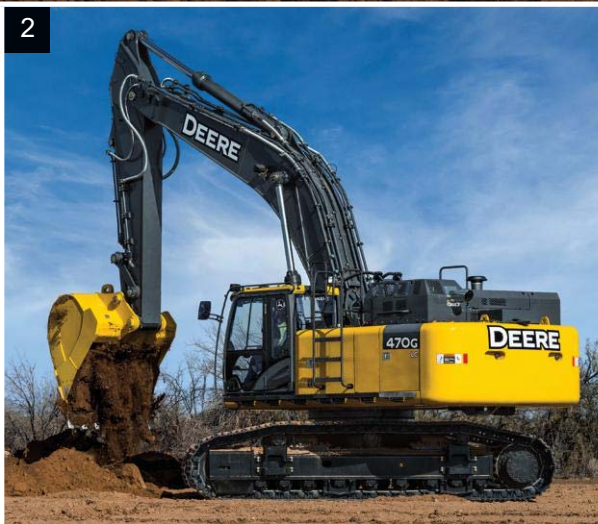
# The perfect combination of brains and brawn.

The 470GLC is a smart choice. Intelligent features like our Powerwise™ III engine/hydraulic-management system with multiple productivity modes enable you to put that extra ability to use with the same kind of smooth precision that operators have come to expect from our entire line of excavators.

1. Low-effort joysticks, unmatched metering, and smooth multifunction operation deliver the control and finesse you need for utilities work.

2. Generous flow, arm force, and swing torque help speed cycles. So you can do your best to stay on schedule or ahead of the weather.

3. When the task calls for a little extra, simply press the power-boost button on the right-hand control and muscle through.





Powerwise III perfectly balances engine performance and hydraulic flow for predictable operation. Three productivity modes allow you to choose the digging style that fits the job. High productivity delivers more power and faster hydraulic response to move more material. Power delivers smooth and balanced metering for normal operation. Economy reduces top speed and helps save fuel.

Choose from a variety of track widths, arm lengths, buckets, and other productivity-boosting options.

# Operating ease takes a turn for the better.

Now it's easier than ever for your operators to "dial things up." The 470GLC's refined monitor employs a turn-and-tap rotary control that provides quick access to an abundance of performance and convenience features and functions. Operators will also appreciate the quiet and spacious cab, unsurpassed all-around visibility, and numerous other amenities that provide everything your operators need to do their best work.

Thanks to a wide expanse of front, side, and overhead glass and mirrors, visibility to the sides and rear is unobstructed, even with the increased under-the-hood space requirements of FT4/Stage IV components.

We've got your back with a sculpted and heated air-suspension, high-back seat. Seat has 267 mm (10.5 in.) of travel, sliding together or independent of the joystick console so it won't cramp an operator's style.

Ergonomically correct short-throw pilot levers provide smooth, predictable fingertip control with less movement or effort. Push buttons in the right lever allow fingertip control of auxiliary hydraulic flow for operating attachments.

1. Multi-language LCD monitor and rotary dial provide intuitive access to a wealth of information and functions. Just turn and tap to select work mode, access operating info, check maintenance intervals, source diagnostic codes, adjust cab temperature, and tune the radio. Plus much more.
2. Standard boom/frame lights and cab/boom-mounted options provide illumination to extend your workday beyond daytime hours. Standard cab lights and a right-hand boom light further dispel the dark when needed.
3. Automatic, high-velocity, bi-level climate-control system with automotive-style adjustable louvers helps keep the glass clear and the cab comfortable.







# Nothing runs like a Deere, because nothing is built like one.

The 470GLC employs many of the same job-proven digging structures and hydraulic, electrical, and undercarriage components as its highly regarded D-Series predecessor. When you know how it's built, you'll run this Deere.



1. Highly efficient, hydraulically driven fan runs only as fast as needed, reducing noise, fuel consumption, and operating costs. Standard reversing feature back-blows cooler cores to keep them clean automatically or at the touch of a button.
2. A John Deere exclusive, three welded bulkheads within the boom resist torsional stress for unsurpassed durability. Boom, arm, mainframe, and FT4/Stage IV components are so tough, they're warranted for three years or 10,000 hours.
3. Thick-plate single-sheet mainframe, box-section track frames, and industry-exclusive double-seal swing bearing deliver rock-solid durability.
4. Compare the size of the 470G LC's carrier and bottom rollers, idlers, and sealed and lubricated chain. This is one heavy-duty undercarriage.

Optional grade-reference system includes sensor mounts to help speed installation, eliminating the need to grind, weld, and repaint. Our "open-architecture" design allows you to employ your favorite brand of grade-control system to help maximize productivity and uptime while lowering daily operating costs.

To meet stringent FT4/Stage IV standards, we built on our EPA Interim Tier 4 (IT4)/EU Stage IIIB solution to deliver the best combination of performance, efficiency, and reliability without sacrificing power or torque. Our field-proven technology is simple, field-efficient, fully integrated, and fully supported. It employs field-proven cooled exhaust gas recirculation (EGR), easy-to-maintain high-uptime exhaust filters, and selective catalytic reduction (SCR).

