

Certificate of Substantial Completion

PROJECT: Build back services to the property located at 1902 Joe Stephens, Weslaco Texas 78539

PROJECT NUMBER: C-18-223-07-31

OWNER: HIDALGO COUNTY

CONTRACTOR: SERVPRO of Harlingen/San Benito

AREA OR WORK: JP Offices Located in Precinct 1.

The Work performed under this Contract has been reviewed and found, to the Engineer's best knowledge, information and belief, to be substantially complete. Substantial Completion is the stage in the progress of the Work when the Work or designated portion is sufficiently complete in accordance with the Contract Documents so that the owner can occupy or utilize the Work for its intended use. The date of Substantial Completion of the Project or portion designated above is the date of issuance established by this Certificate, which is also the date of commencement of applicable warranties required by the Contract Documents, except as stated below: Construction time is stopped at the day of Issuance.

Halff Associates, Inc.

Engineer



By

1/7/2019

Date of Issuance

A list of items to be completed or corrected is attached hereto. The failure to include any items on such list does not alter the responsibility of the Contractor to complete all Work in accordance with the Contract Documents. Unless otherwise agreed to in writing, the date of commencement of warranties for items on the attached list will be the date of issuance of the final Certificate of Payment or the date of final payment.

Cost estimate of Work that is incomplete or defective: \$1000.00.

The Contractor will complete or correct the Work on the list of items attached hereto and complete the work by 1/25/2019.
Date

The Owner accepts the Work or designated portion as substantially complete and will assume full possession at 12:01 am on 12/26/2018.
Date

Owner

By

Date

PlanGrid Task Report - Dec 27, 2018

Prepared by Jose Silva

Description

20 tasks in this report.

Contents

#1 Acoustical Ceiling	2
#2 Acoustical Ceiling	3
#3 Paint Touch Up	4
#4 Electrical	5
#5 Acoustical Ceiling	6
#6 Acoustical Ceiling	7
#7 Plumbing	8
#8 Plumbing	9
#9 Caulking	10
#10 Acoustical Ceiling	11
#11 Plumbing	12
#12 Electrical	13
#13 Electrical	14
#14 General	15
#15 Plumbing	16
#16 Plumbing	17
#17 Electrical	18
#18 General	19
#19 Plumbing	20
#20 Electrical	21

#1 Acoustical Ceiling

Status
Open

Type
Issue

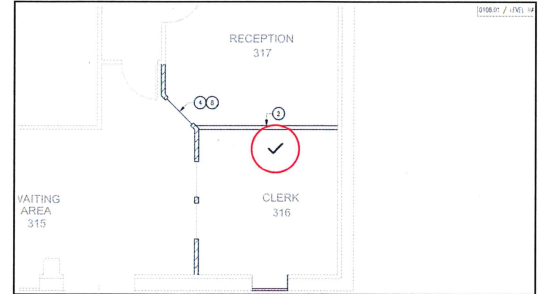
Description
Ceiling mounted devices not properly installed.

Assignees

Created
Dec 26, 2018 at 1:47pm
jsilva@halff.com

Last Updated
Dec 26, 2018 at 1:57pm

Sheet
A102



Photos



A102 Task markup
Dec 26, 2018 at 1:48pm



A102 Task markup
Dec 26, 2018 at 1:49pm



A102 Task markup
Dec 26, 2018 at 1:48pm

#2 Acoustical Ceiling

Status
Open

Type
Issue

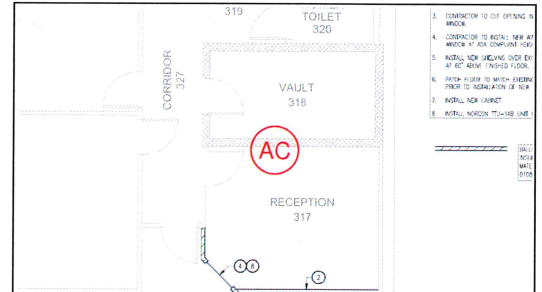
Description
Ceiling grid/tile not properly installed.

Assignees

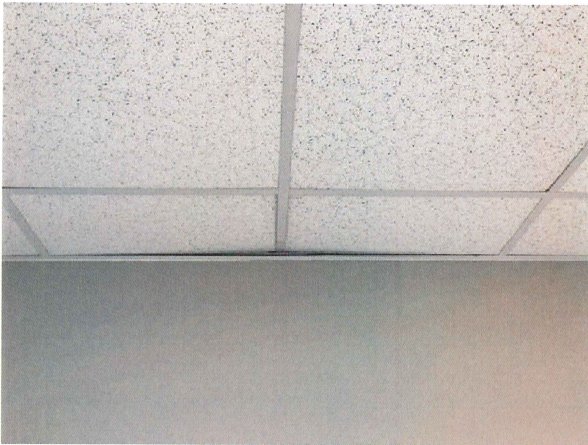
Created
Dec 26, 2018 at 1:49pm
jsilva@halff.com

Last Updated
Dec 26, 2018 at 1:51pm

Sheet
A102



Photos



A102 Task markup

Dec 26, 2018 at 1:51pm

#3 Paint Touch Up

Status
Open

Type
Issue

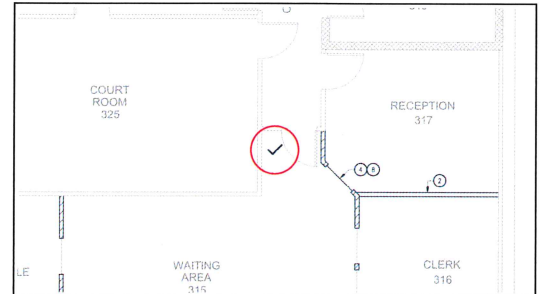
Description
Wall mounted device not properly installed.

Assignees

Created
Dec 26, 2018 at 1:51pm
jsilva@halff.com

Last Updated
Dec 26, 2018 at 2:27pm

Sheet
A102



Photos



A102 Task markup
Dec 26, 2018 at 2:26pm

#4 Electrical

Status
Open

Type
Issue

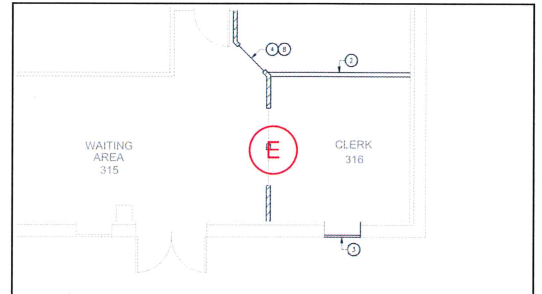
Description
Door release push button not properly fastened to box.

Assignees

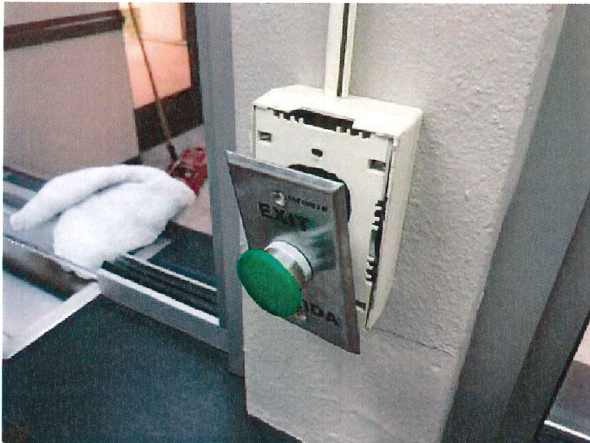
Created
Dec 26, 2018 at 1:54pm
jsilva@halff.com

Last Updated
Dec 26, 2018 at 1:56pm

Sheet
A102



Photos



A102 Task markup
Dec 26, 2018 at 1:55pm

#5 Acoustical Ceiling

Status
Open

Type
Issue

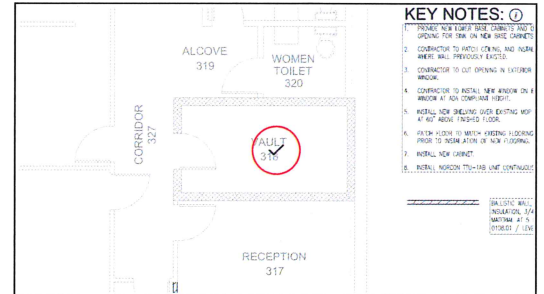
Description
Ceiling mounted device not properly installed.

Assignees

Created
Dec 26, 2018 at 1:57pm
jsilva@halff.com

Last Updated
Dec 26, 2018 at 1:58pm

Sheet
A102



Photos



A102 Task markup
Dec 26, 2018 at 1:58pm

#6 Acoustical Ceiling

Status
Open

Type
Issue

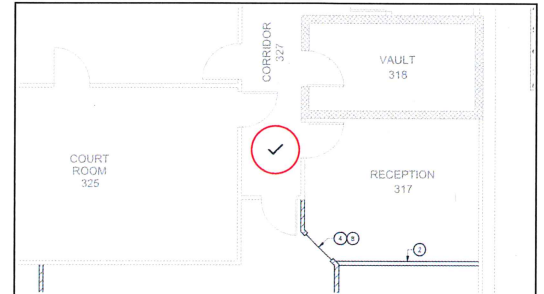
Description
Ceiling mounted device not properly installed.

Assignees

Created
Dec 26, 2018 at 1:59pm
jsilva@halff.com

Last Updated
Dec 26, 2018 at 2:00pm

Sheet
A102



Photos



A102 Task markup
Dec 26, 2018 at 1:59pm

#7 Plumbing

Status
Open

Type
Issue

Description

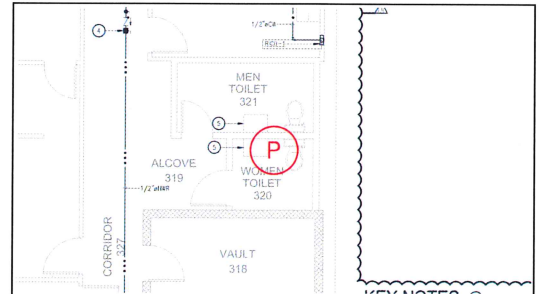
Missing escutcheon plate on drain line, water line escutcheon plates need to be properly installed/sealed. Escutcheon plate on water closet needs to be larger to cover entire wall opening.

Assignees

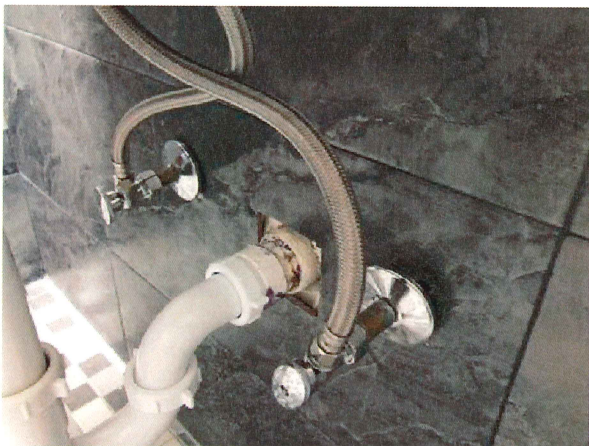
Created
Dec 26, 2018 at 2:02pm
jsilva@halff.com

Last Updated
Dec 26, 2018 at 2:07pm

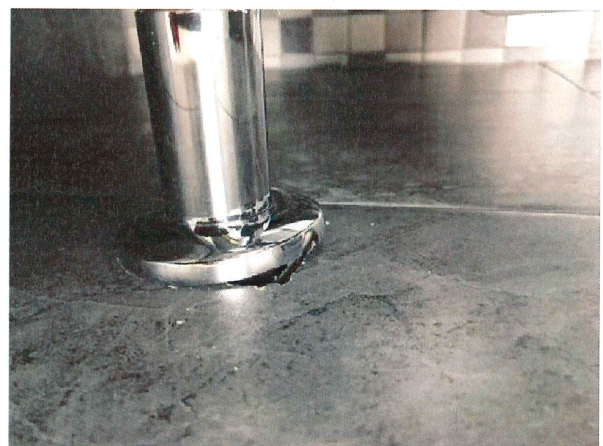
Sheet
P102



Photos



P102 Task markup
Dec 26, 2018 at 2:05pm



P102 Task markup
Dec 26, 2018 at 2:05pm

#8 Plumbing

Status
Open

Type
Issue

Description

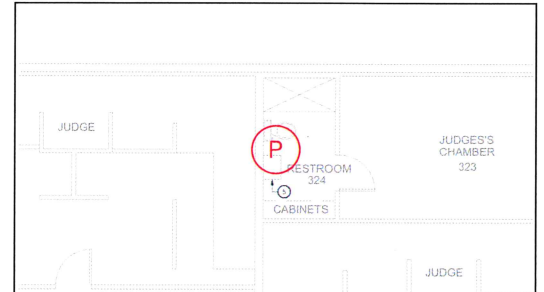
Missing escutcheon plate on drain line, water line escutcheon plates need to be properly installed/sealed, both plate were cut to be reinstalled. Escutcheon plate on water closet needs to be larger to cover entire wall opening.

Assignees

Created
Dec 26, 2018 at 2:11pm
jsilva@halff.com

Last Updated
Dec 26, 2018 at 2:23pm

Sheet
P102



Photos



P102 Task markup
Dec 26, 2018 at 2:10pm



P102 Task markup
Dec 26, 2018 at 2:10pm

#9 Caulking

Status
Open

Type
Issue

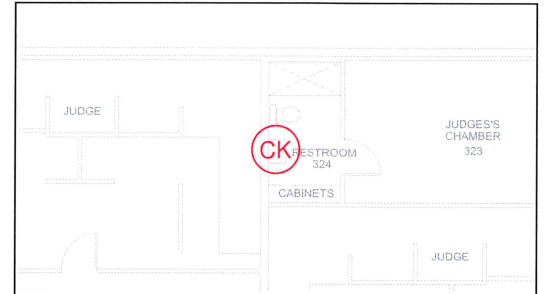
Description
Caulking around lavatory is cracked.

Assignees

Created
Dec 26, 2018 at 2:13pm
jsilva@halff.com

Last Updated
Dec 26, 2018 at 2:15pm

Sheet
A102



Photos



A102 Task markup
Dec 26, 2018 at 2:15pm

#10 Acoustical Ceiling

Status
Open

Type
Issue

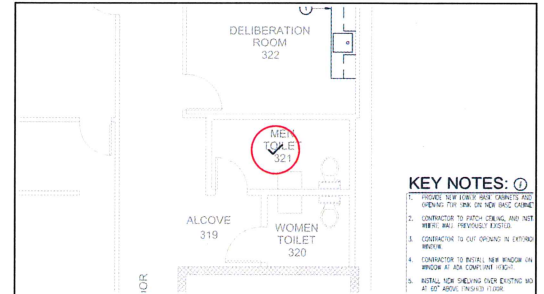
Description
Ceiling mounted device not properly installed.

Assignees

Created
Dec 26, 2018 at 2:20pm
jsilva@halff.com

Last Updated
Dec 26, 2018 at 2:20pm

Sheet
A102



Photos



A102 Task markup
Dec 26, 2018 at 2:18pm

#11 Plumbing

Status
Open

Type
Issue

Description

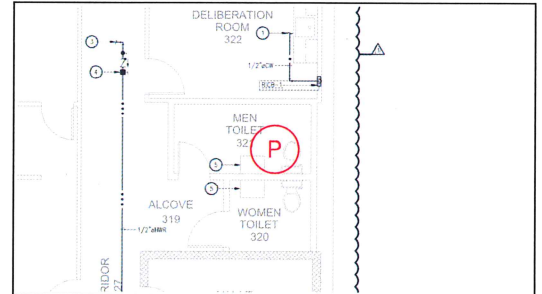
Missing escutcheon plate on drain line, water line escutcheon plates need to be properly installed/sealed, one plate was cut to be reinstalled.

Assignees

Created
Dec 26, 2018 at 2:20pm
jsilva@halff.com

Last Updated
Dec 26, 2018 at 2:22pm

Sheet
P102



Photos



P102 Task markup

Dec 26, 2018 at 2:18pm

#12 Electrical

Status
Open

Type
Issue

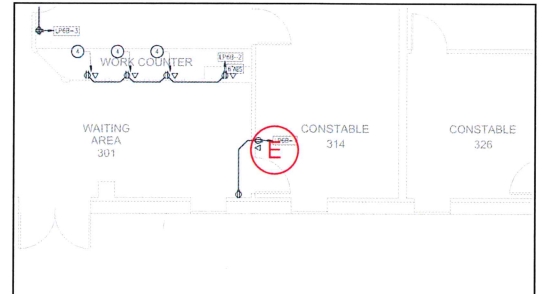
Description
Receptacles and data outlet not installed.

Assignees

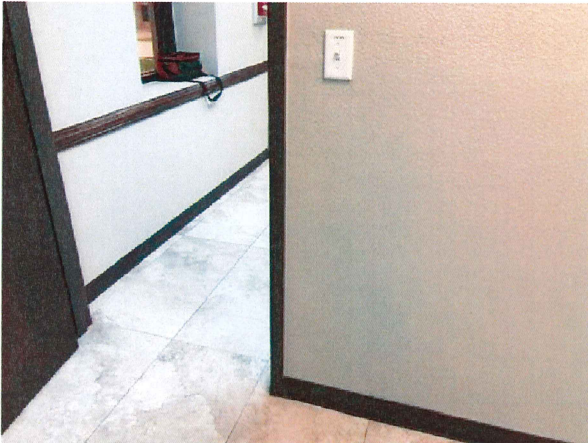
Created
Dec 26, 2018 at 2:29pm
jsilva@halff.com

Last Updated
Dec 26, 2018 at 2:31pm

Sheet
E102



Photos



E102 Task markup
Dec 26, 2018 at 2:30pm

#13 Electrical

Status
Open

Type
Issue

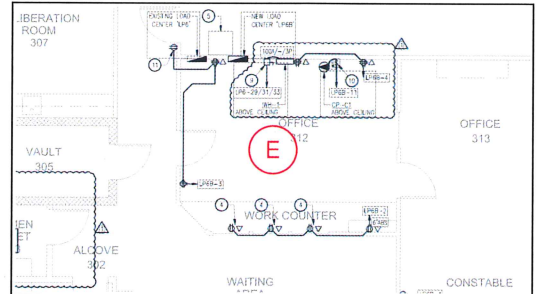
Description
Receptacles and data outlet installation not as shown on plan.

Assignees

Created
Dec 26, 2018 at 2:37pm
jsilva@halff.com

Last Updated
Dec 26, 2018 at 2:39pm

Sheet
E102



Photos



E102 Task markup

Dec 26, 2018 at 2:34pm

#14 General

Status
Open

Type
Issue

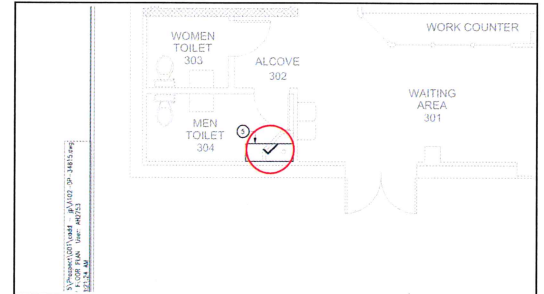
Description
Shelves not installed above existing mop sink.

Assignees

Created
Dec 26, 2018 at 2:39pm
jsilva@halff.com

Last Updated
Dec 26, 2018 at 2:40pm

Sheet
A102



Photos



A102 Task markup

Dec 26, 2018 at 2:37pm

#15 Plumbing

Status
Open

Type
Issue

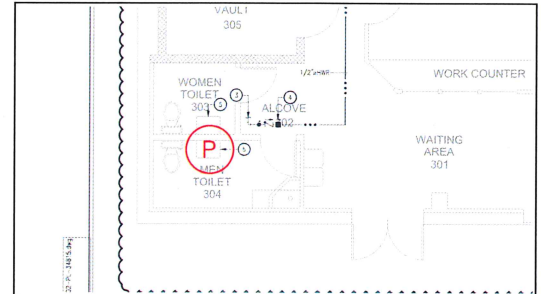
Description
Missing escutcheon plate on
drain line.

Assignees

Created
Dec 26, 2018 at 2:41pm
jsilva@halff.com

Last Updated
Dec 26, 2018 at 2:42pm

Sheet
P102



Photos



P102 Task markup
Dec 26, 2018 at 2:40pm

#16 Plumbing

Status
Open

Type
Issue

Description

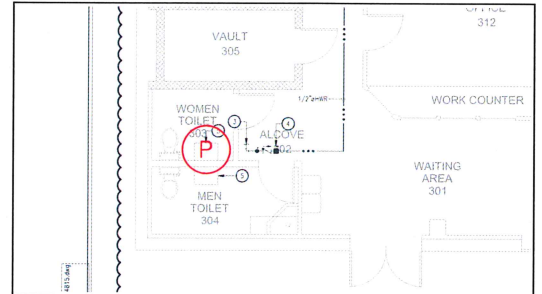
Missing escutcheon plate on drain line, water line escutcheon plate needs to be properly installed/sealed, plate was cut to be reinstalled.

Assignees

Created
Dec 26, 2018 at 2:43pm
jsilva@halff.com

Last Updated
Dec 26, 2018 at 2:44pm

Sheet
P102



Photos



P102 Task markup

Dec 26, 2018 at 2:42pm

#17 Electrical

Status
Open

Type
Issue

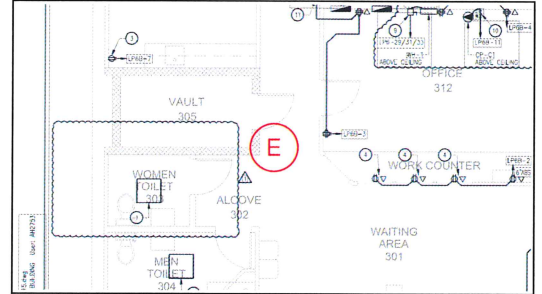
Description
Light switch for Corridor 306 not working.

Assignees

Created
Dec 26, 2018 at 2:47pm
jsilva@halff.com

Last Updated
Dec 26, 2018 at 2:49pm

Sheet
E102



Photos



E102 Task markup
Dec 26, 2018 at 2:46pm



E102 Task markup
Dec 26, 2018 at 2:46pm

#18 General

Status
Open

Type
Issue

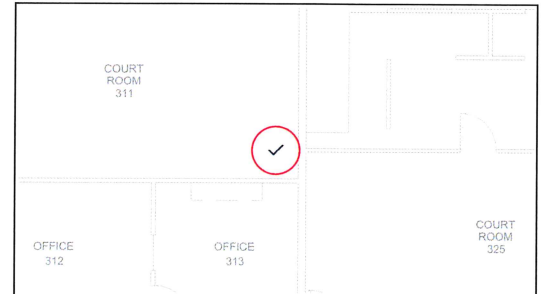
Description
Missing ceiling tile and telecommunications racks not properly installed.

Assignees

Created
Dec 26, 2018 at 2:51pm
jsilva@halff.com

Last Updated
Dec 26, 2018 at 2:52pm

Sheet
A102



Photos



A102 Task markup
Dec 26, 2018 at 2:49pm



A102 Task markup
Dec 26, 2018 at 2:50pm

#19 Plumbing

Status
Open

Type
Issue

Description

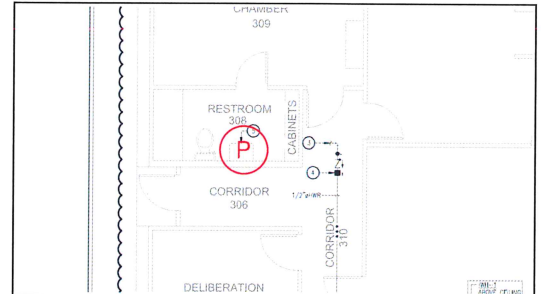
Missing escutcheon plate on drain line, water line escutcheon plate needs to be properly installed/sealed, plate was cut to be reinstalled.

Assignees

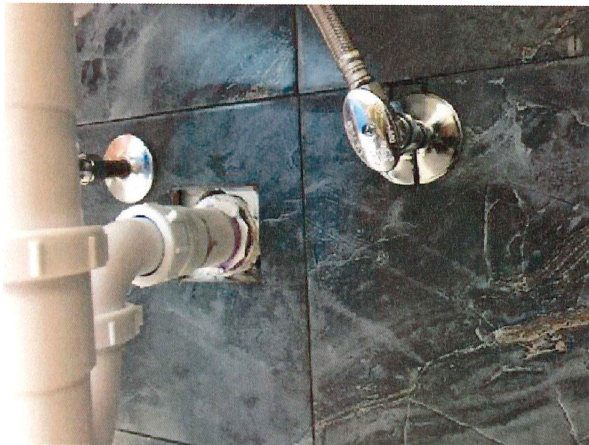
Created
Dec 26, 2018 at 2:58pm
jsilva@halff.com

Last Updated
Dec 26, 2018 at 2:58pm

Sheet
P102



Photos



P102 Task markup
Dec 26, 2018 at 2:55pm

#20 Electrical

Status
Open

Type
Issue

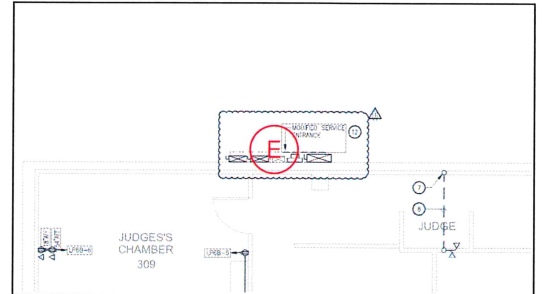
Description
Missing screws on new electrical gutter.

Assignees

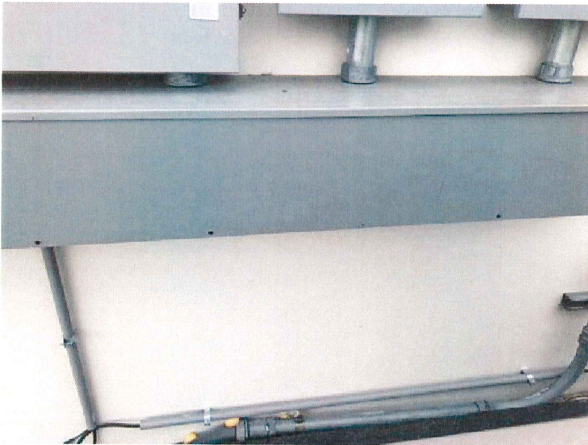
Created
Dec 26, 2018 at 3:03pm
jsilva@halff.com

Last Updated
Dec 26, 2018 at 3:05pm

Sheet
E102



Photos



E102 Task markup

Dec 26, 2018 at 3:02pm

