



# Lower Rio Grande Valley Development Council

Mayor David Suarez, Weslaco ..... President  
 Mayor Jim Darling, McAllen..... 1<sup>st</sup> Vice-President  
 Judge Aurelio "Keter" Guerra, Willacy County ..... 2<sup>nd</sup> Vice President  
 Mayor Ambrosio "Amos" Hernandez, Pharr ..... Secretary  
 Mayor Chris Boswell, Harlingen ..... Treasurer  
 Hon. Norma G. Garcia, Member-at-Large..... Immediate Past President

## BOARD MEMBERS

David A. Garza  
 Commissioner, Cameron County

David Fuentes  
 Commissioner, Hidalgo County

Pilar Garza  
 Commissioner, Alamo

Trey Mendez,  
 Mayor, Brownsville

Gilbert Enriquez  
 Councilman, Edinburg

Yolanda H. Cruz  
 Mayor Pro-tem, Los Fresnos

Rick Salinas  
 Commissioner, Lyford

Henry Hinojosa  
 Mayor, Mercedes

Norie Gonzalez Garza  
 Mayor Pro-tem, Mission

Dave Kusch  
 Mayor, Primera

Edward Gonzales  
 Commissioner, Raymondville

Benjamin "Ben" Gomez  
 Mayor, San Benito

Marco "Markie" Villegas  
 Mayor, San Juan

Veronica Gonzales  
 UT Rio Grande Valley

Paul Hernandez  
 South Texas College

Javier De Leon  
 Texas State Technical College

Troy Allen  
 Delta Lake Irrigation District

Ronald Mills  
 Willacy County Navigation District

Celeste Sanchez  
 Member-at-Large

Commissioner Jesse Zuniga  
 Member-at-Large

Christina Patiño Houle  
 Grassroots Organizations

**EXECUTIVE DIRECTOR**  
 Ron Garza

November 25, 2019

David L Fuentes  
 Hidalgo County Precinct 1  
 1902 Joe Stephens Ave  
 Weslaco, TX 78596

The LRGVDC E-Comms/9-1-1 Department makes the following observations regarding LA PALOMA SUBDIVISION UT 1 & LA PALOMA SUBDIVISION UT 2.

Streets were recorded with no road type:

La Chuparrosa  
 El Gorrion  
 La Gordonis  
 El Canario  
 La Golondrina

Some street signs do show the street type "St" next to the name.

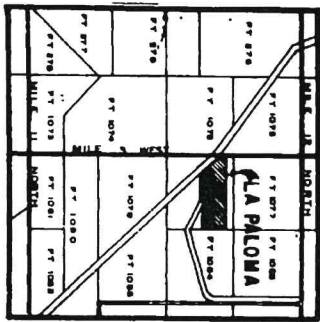
Also noticed that plat shows street La Gordonis misspelled but residents are using La Godornis. We recommend to correct the name to La Godornis St.

Our agency strongly recommends to add road type "St" to all the streets on both subdivisions

Jose L Hernandez  
 Planner I  
 LRGVDC Ecomms 9-1-1  
 956-682-3481 ext 187

THE WEST ALLEY WHICH OVERLAPS TENNESSEE PIPE LINE EASEMENT NO UNDERGROUND UTILITIES WILL PERMITTED IN THE SAID WEST 1/2 OF THE WEST ALLEY WITHOUT EXPRESS PERMISSION OF TENNESSEE GAS, EXCEPT THAT NECESSARY UTILITIES CROSSING SAID PIPE LINE WILL BE ALLOWED

Scale 1"=100'

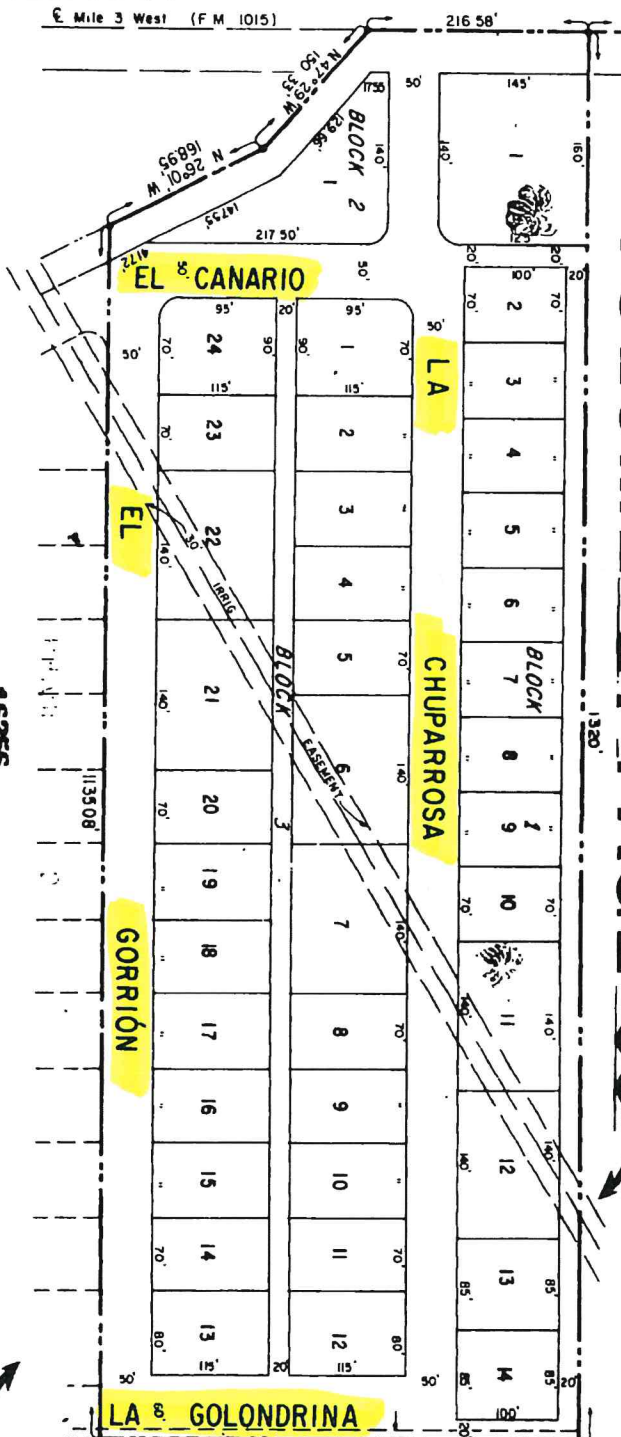


MIDALGO COUNTY, TEXAS.

PREPARED BY:  
FABIAN NELSON GIMEDINA INC.  
MCALLEN, TEXAS

# VOLUME 21 PAGE 96

COMMISSIONER'S COURT  
BY  
T. THE  
SANTOS SAIDAYA, County Clerk  
MAY 21, 1980



## LA PALOMA SUBDIVISION UNIT NO. 1

1384

The La Paloma Subdivi containing 13.60 gross of Farm Tract 1078, Bl Grande Grant, Hidalgo and bounds as follows.  
BEGINNING at th is South a distance of Tract 1078;  
THENCE, East 40 1015 and with a total northeast corner of th  
THENCE, South 1 corner of this subdivi  
THENCE, West 1, drain ditch for the soi  
THENCE, North ; centerline of FM 1015 ;  
THENCE, North ; centerline of FM 1015  
THENCE, North ; lining within these m more or less.

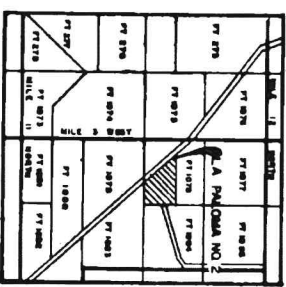


VED  
DING  
My Dept:  
d/bill  
ED

27/10/11  
s of Hidalgo



Submitted to  
and And In



SUBJECT DATA  
A = 4116.11'  
B = 20.0'  
ARC = 90.96'  
C = 4633.94'  
D = 20.0'  
ARC = 28.28'

NOTE: ( ) RECORD DEED CALL

# LA PALOMA SUBDIVISION UNIT NO. 2

The La Paloma Subdivision Unit 2, being a subdivision containing 15.37 gross acres, more or less, situated in and a part of Farm Tract 1878, Block 118, Adams Tract Subdivision, Llano Grande Grant, Hidalgo County, Texas, and is described by metes and bounds as follows, to-wit:

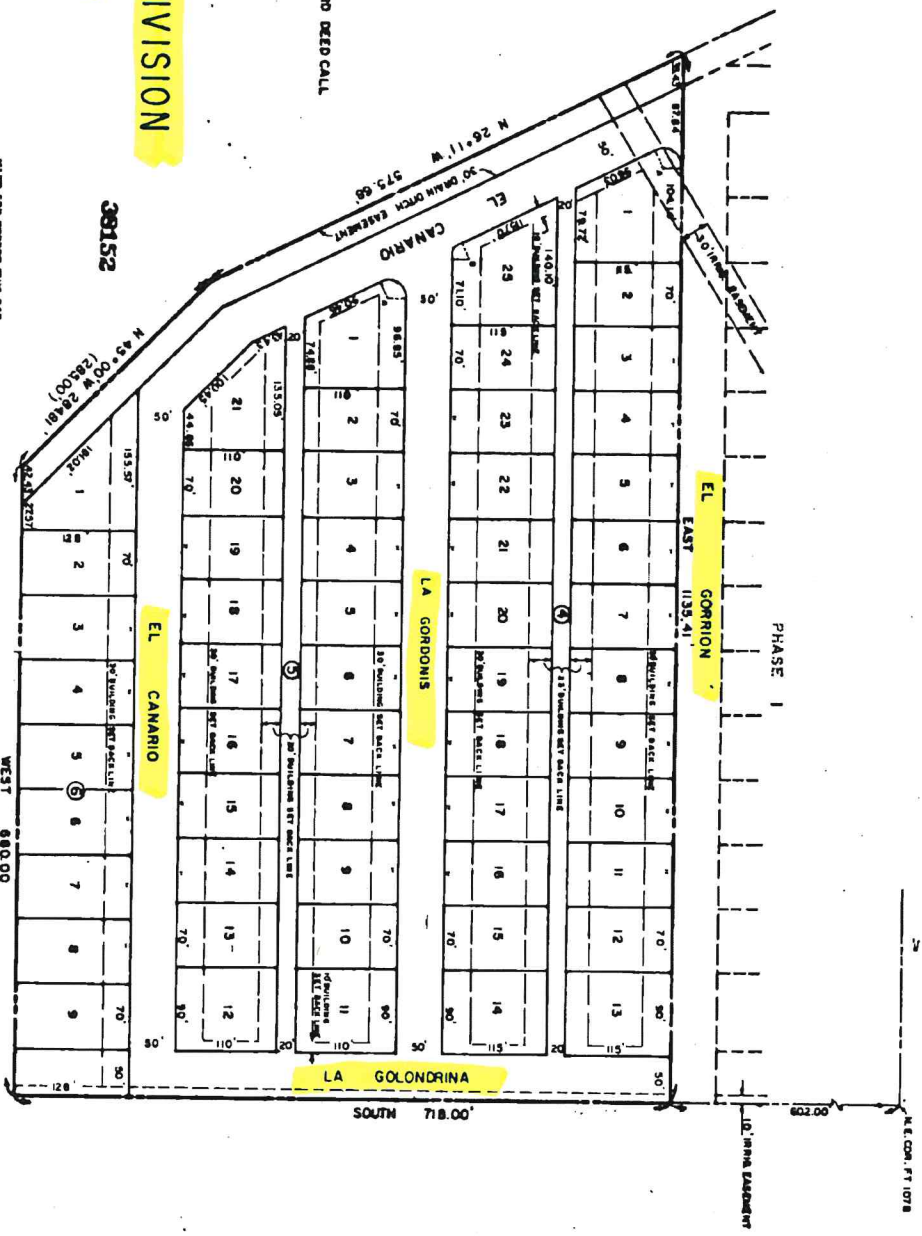
BEGINNING at the northeast corner of the subdivision, which is South a distance of 687.00 ft. from the northeast corner of Farm Tract 1878;

THENCE South a distance of 718.00 ft. to an iron pin being the southeast corner of this subdivision;

THENCE West a distance of 680.00 ft. to a rock in the ground;

FILED FOR RECORDING BY  
Lyle G. P. 11

*P. J. Vergara*



I, the undersigned, owner of the land shown on this plat and designated herein as the La Paloma Unit No. 2 to Hidalgo County, Texas, and the accompanying map is subscribed hereto, hereby approve, accept and adopt of the public use of said subdivision and hereby dedicate to the use easements, and all public places thereon shown for the purpose and consideration therein expressed.

APPROVED  
FOR RECORDING  
By *Donna Willett*  
12-16-80