

HIDALGO COUNTY

PRECINCT No.4

NEW SERVICES FACILITY AND JUSTICE CENTER

HIDALGO COUNTY, TEXAS

HIDALGO COUNTY JUDGE

RICHARD CORTEZ

COMMISSIONERS

DAVID L. FUENTES

EDUARDO "EDDIE" CANTU

JOE M. FLORES

ELLIE TORRES



COMMISSIONER PRECINCT 1

COMMISSIONER PRECINCT 2

COMMISSIONER PRECINCT 3

COMMISSIONER PRECINCT 4

rike • ogden • figueroa • allex architects inc.

ARCHITECT OF RECORD:



ROFA ARCHITECTS, INC

Michael E. Allex, AIA
1007 WALNUT AVENUE
MCALLEN, TEXAS 78501
TEL.: 956.686.7771
FAX.: 956.687.3433

www.rofainc.com

CIVIL ENGINEERS:

M Garcia Engineering, LLC

Mariano Garcia, P.E.
400 W. NOLANA, SUITE H.2
MCALLEN, TEXAS 78504
TEL.: 956.687.9421
FAX.: 956.687.3211

www.mgarciaengineering.com

LANDSCAPE ARCHITECTS:

SSP Design

S. Scott Pajeski, ASLA
789 E. WASHINGTON STREET
BROWNSVILLE, TEXAS 78520
TEL.: 956.547.9788
FAX.: 956.547.9977

www.sspdesign.com

STRUCTURAL ENGINEERS:

Chanin Engineering, LLC

Miguel Chanin, P.E.
400 W. NOLANA, SUITE H.2
MCALLEN, TEXAS 78504
TEL.: 956.687.9421
FAX.: 956.687.3211

www.chaninengineering.com

M.E.P. ENGINEERS:

Trinity MEP Engineering, LLC

Leonardo Munoz, P.E., R.M.E
3533 MORELAND DR., SUITE A
WESLACO, TX 78596
TEL.: 956.973.0500
FAX.: 956.351.5750

www.trinitymep.com

rofa
architects

Rike • Ogden • Figueroa • Allex

McAllen

1007 Walnut Ave.
McAllen, Texas 78501
V. 956.686.7771
F. 956.687.3433
www.rofainc.com

McAllen Harlingen

COPYRIGHT ROFA ARCHITECTS 2017

CONSULTANTS:

PRELIMINARY DESIGN
NOT FOR CONSTRUCTION

HIDALGO COUNTY PRECINCT No.4
NEW SERVICES FACILITY AND
JUSTICE CENTER
HIDALGO COUNTY, TEXAS
EDINBURG, TEXAS 78542
1212 SOUTH 25TH AVENUE.

PROJECT NO: 2018.19

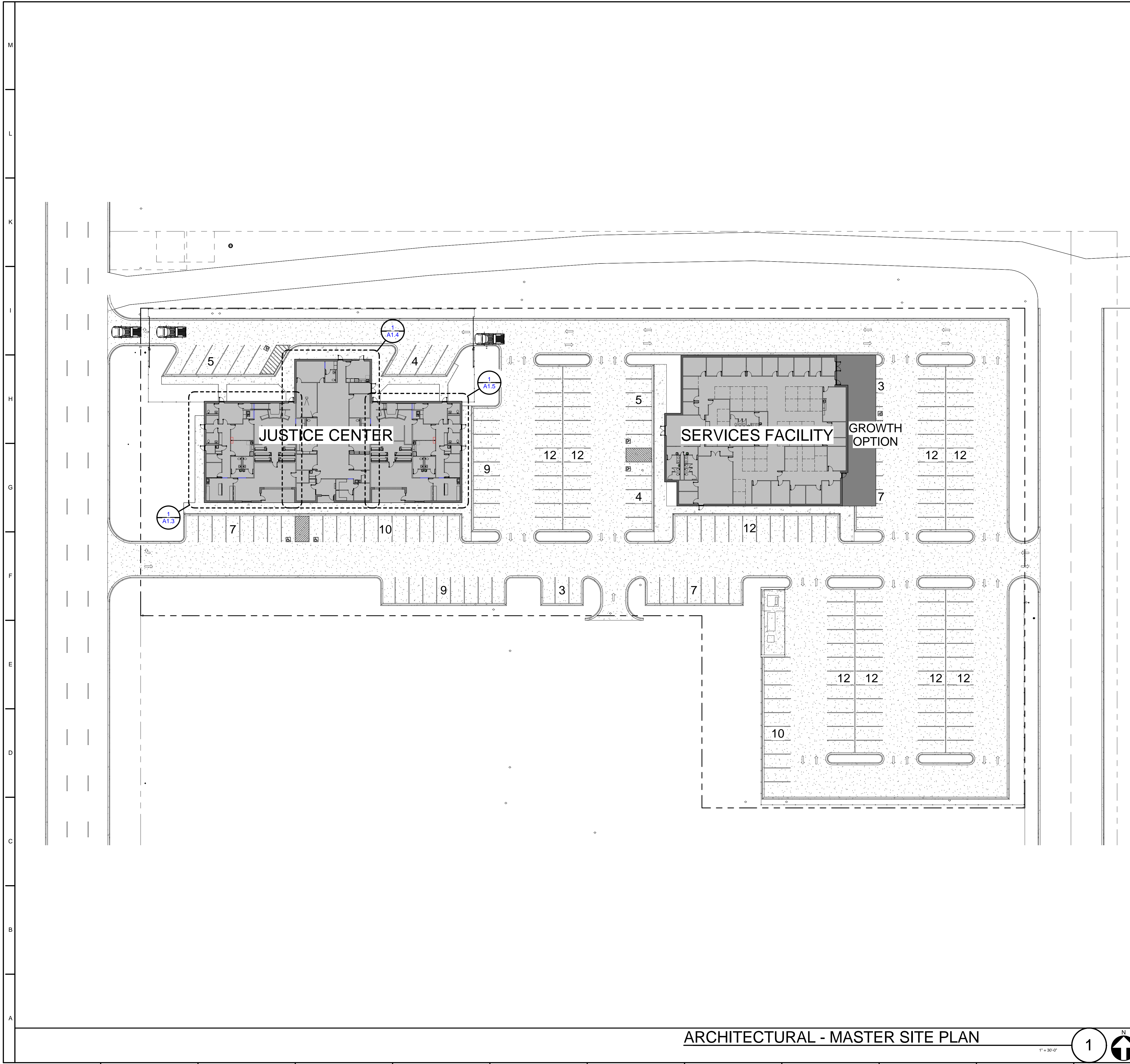
DATE: 5/13/2019 2:03:50 PM

STARTING DATE:

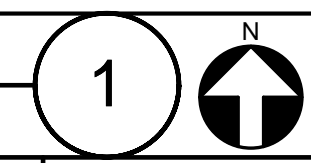
CK BY:Checker DWN BY: Author

COVER SHEET

CS 1.1



ARCHITECTURAL - MASTER SITE PLAN



ARTICLE 9 PARKING, LOADING, ACCESS, AND LIGHTING
DIVISION 9.200 PARKING AND LOADING CALCULATIONS
SEC. 9.201 PARKING AND LOADING REQUIREMENTS TABLE

A. MINIMUM OFF-STREET PARKING AND LOADING REQUIREMENTS.
 THE MINIMUM OFF-STREET PARKING AND LOADING REQUIREMENTS FOR THE USES SET OUT IN THIS CODE ARE SET OUT IN TABLE 9.201, *MINIMUM PARKING AND LOADING REQUIREMENTS*, BELOW.

TABLE 9.201
MINIMUM PARKING AND LOADING REQUIREMENTS

LAND USE	PARKING	LOADING
COMMERCIAL USES		
OFFICES - GENERAL	3 SPACES / 1,000 SF.	1 SPACE / 33,000 SF.

SEC. 9.302 ACCESSIBLE PARKING CALCULATIONS:

A. NUMBER OF ACCESSIBLE PARKING SPACES.

1. IN GENERAL, THE NUMBER OF ACCESSIBLE SPACES SHALL BE IN ACCORDANCE WITH TABLE 9.302A, *REQUIRED NUMBER OF OFF-STREET ACCESSIBLE PARKING SPACES*.

TABLE 9.302A
REQUIRED NUMBER OF OFF-STREET ACCESSIBLE PARKING SPACES

NUMBER OF PARKING SPACES PROVIDED	NUMBER OF ACCESSIBLE SPACES REQUIRED
151-200	6

PARKING CALCULATIONS:

12,948 S.F. TOTAL COUNTY SERVICES FACILITY FLOOR AREA - 3 SPACES / 1,000 SF. = 39 PARKING SPACES

12,442 S.F. TOTAL JUSTICE CENTER FLOOR AREA - 3 SPACES / 1,000 SF. = 38 PARKING SPACES

LOADING CALCULATIONS:

25,390 S.F. TOTAL BUILDINGS FLOOR AREA - 1 SPACE / 33,000 SF. = 0 LOADING SPACES

TOTAL PARKING REQUIRED:
 TOTAL REQUIRED = 77 PARKING SPACES

TOTAL PARKING PROVIDED:
 TOTAL PROVIDED = 191 PARKING SPACES
 TOTAL ACCESSIBLE PROVIDED = 6 ACCESSIBLE PARKING SPACES

197 TOTAL COMBINED PARKING SPACES PROVIDED

rofa
 architects
 Rike • Ogden • Figueroa • Allex

McAllen
 1007 Walnut Ave.
 McAllen, Texas 78501
 V. 956.686.7771
 F. 956.687.3433
 www.rofainc.com

McAllen Harlingen
 COPYRIGHT ROFA ARCHITECTS 2017
 CONSULTANTS:

PRELIMINARY DESIGN
NOT FOR CONSTRUCTION

HIDALGO COUNTY PRECINCT No.4
 NEW SERVICES FACILITY AND
 JUSTICE CENTER
 HIDALGO COUNTY, TEXAS
 1212 SOUTH 25TH AVENUE, EDINBURG, TEXAS 78542

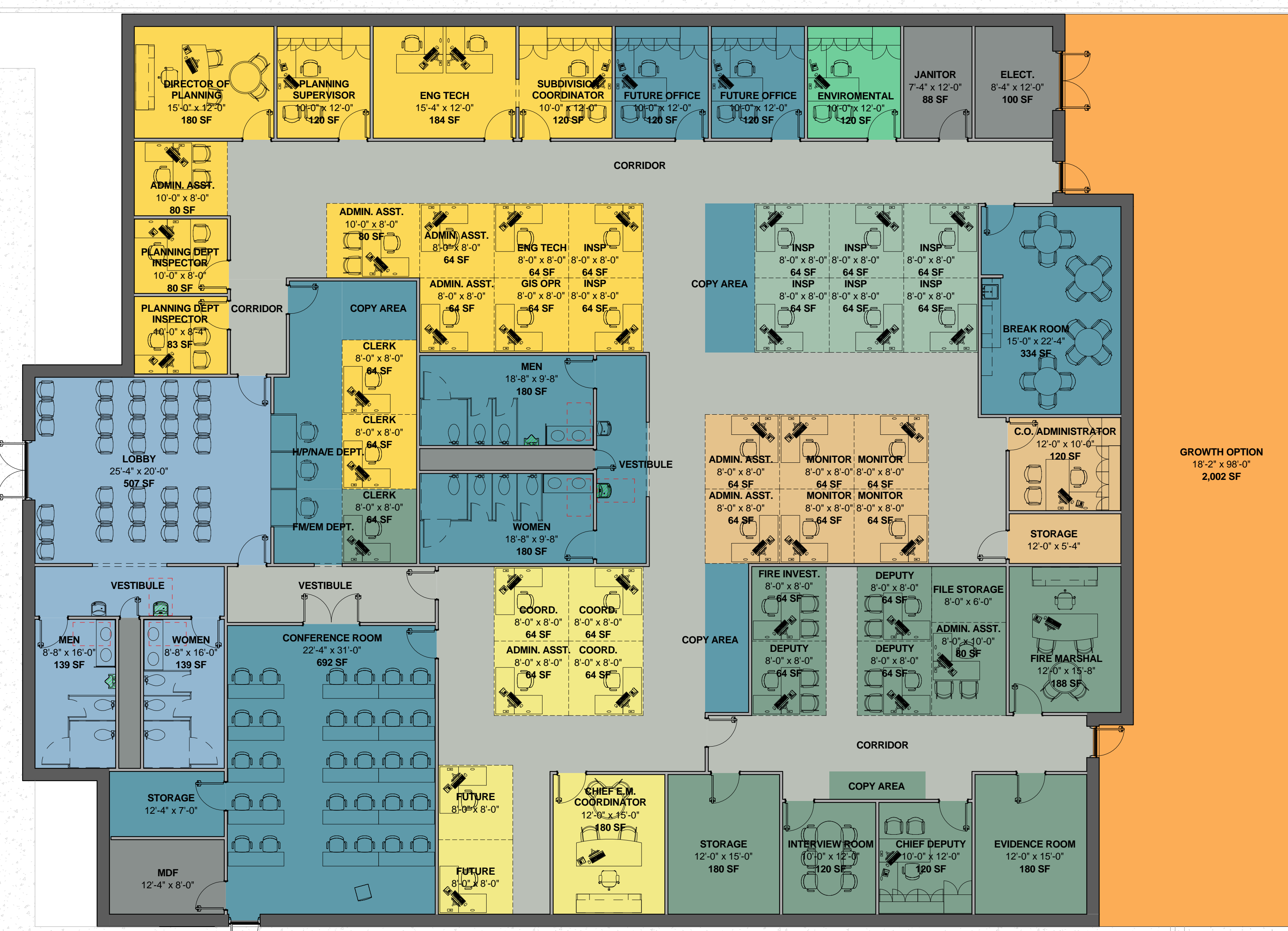
PROJECT NO: 2018.19
 DATE: 5/13/2019 2:03:43 PM
 STARTING DATE:
 CK BY: Checker DWN BY: Author

OVERALL
 ARCHITECTURAL -
 SITE PLAN

AS1.1


HIDALGO COUNTY SERVICES FACILITY - PCT 4

Name / Type of Space	Qty	Total ASF
CIRCULATION		
CORRIDOR	3	2,067 SF
VESTIBULE	1	134 SF
	4	2,201 SF
COMMON SPACES		
BREAK ROOM	1	334 SF
CONFERENCE ROOM	1	692 SF
COPY AREA	3	211 SF
FM/EM DEPT.	1	60 SF
FUTURE OFFICE	2	240 SF
H/P/NA/E DEPT.	1	149 SF
MEN	1	180 SF
STORAGE	1	86 SF
VESTIBULE	1	119 SF
WOMEN	1	180 SF
	13	2,253 SF
EMERGENCY MGMT.		
ADMIN. ASST.	1	64 SF
CHIEF E.M. COORDINATOR	1	180 SF
COORD.	3	192 SF
FUTURE	2	128 SF
	7	564 SF
ENVIRONMENTAL		
ENVIRONMENTAL	1	120 SF
	1	120 SF
FIRE MARSHAL		
ADMIN. ASST.	1	80 SF
CHIEF DEPUTY	1	120 SF
CLERK	1	64 SF
COPY AREA	1	31 SF
DEPUTY	3	192 SF
EVIDENCE ROOM	1	180 SF
FILE STORAGE	1	48 SF
FIRE INVEST.	1	64 SF
FIRE MARSHAL	1	188 SF
INTERVIEW ROOM	1	120 SF
STORAGE	1	180 SF
	13	1,267 SF
GROWTH OPTION		
GROWTH OPTION	1	2,002 SF
	1	2,002 SF
HEALTH		
INSP	6	384 SF
	6	384 SF
NUISANCE ABATEMENT		
ADMIN. ASST.	2	128 SF
C.O. ADMINISTRATOR	1	120 SF
MONITOR	4	256 SF
STORAGE	1	64 SF
	8	568 SF
PLANNING DEPT.		
ADMIN. ASST.	4	288 SF
CLERK	2	128 SF
DIRECTOR OF PLANNING	1	180 SF
ENG TECH	2	248 SF
GIS OPR	1	64 SF
INSP	2	128 SF
PLANNING SUPERVISOR	1	120 SF
PLANNING DEPT INSPECTOR	2	163 SF
SUBDIVISION COORDINATOR	1	120 SF
	16	1,439 SF
PUBLIC SPACES		
LOBBY	1	507 SF
MEN	1	139 SF
VESTIBULE	1	108 SF
WOMEN	1	139 SF
	4	892 SF
SUPPORT SPACES		
CHASE	2	81 SF
ELECT.	1	100 SF
JANITOR	1	88 SF
MDF	1	99 SF
	5	368 SF
TOTAL SPACES AND NET BUILDING AREA	78	12,058 SF
TOTAL WALL AREA		890 SF
TOTAL BUILDING SLAB AREA		12,948 SF



Space Legend

- CIRCULATION
- COMMON SPACES
- EMERGENCY MGMT.
- ENVIRONMENTAL
- FIRE MARSHAL
- GROWTH OPTION
- HEALTH
- NUISANCE ABATEMENT
- PLANNING DEPT.
- PUBLIC SPACES
- SUPPORT SPACES



Rike • Ogden • Figueroa • Alex

McAllen
1007 Walnut Ave.
McAllen, Texas 78501
V. 956.686.7771
F. 956.687.3433
www.rofainc.com

McAllen Harlingen
COPYRIGHT ROFA ARCHITECTS 2017

CONSULTANTS:

PRELIMINARY DESIGN

NOT FOR CONSTRUCTION

NO. DATE REVISIONS

HIDALGO COUNTY PRECINCT NO.4
NEW SERVICES FACILITY AND
JUSTICE CENTER
HIDALGO COUNTY, TEXAS

EDINBURG, TEXAS 78542

PROJECT NO: 2018.19
DATE: 5/13/2019 2:00:54 PM
STARTING DATE:
CK BY:Checker DWN BY: Author

OVERALL FLOOR PLAN - SERVICES FACILITY

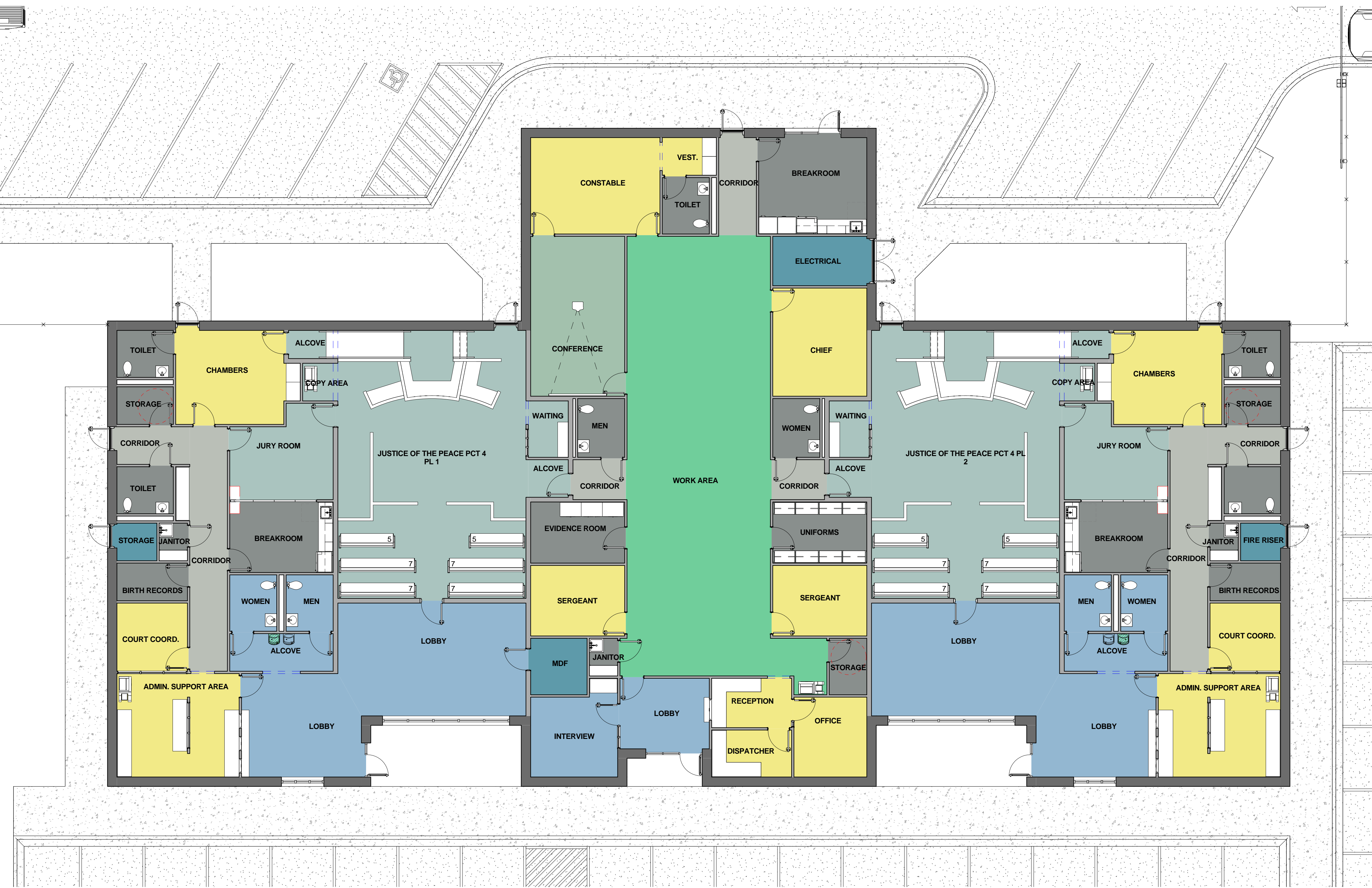
A1.1

HIDALGO COUNTY
JUSTICE CENTER PCT 4

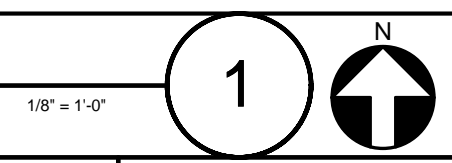
Name / Type of Space	Qty	Total ASF
CIRCULATION		
CORRIDOR	7	669 SF
	1	669 SF
COMMON SPACES		
ELECTRICAL	1	93 SF
FIRE RISER	1	30 SF
MDF	1	64 SF
STORAGE	1	30 SF
	4	218 SF
CONFERENCE ROOM		
CONFERENCE	1	302 SF
	1	302 SF
COURTROOM		
ALCOVE	4	113 SF
COPY AREA	2	46 SF
JURY ROOM	2	352 SF
JUSTICE OF THE PEACE PCT 4 PL 1	1	979 SF
JUSTICE OF THE PEACE PCT 4 PL 2	1	977 SF
WAITING	2	91 SF
	12	2,558 SF
OFFICE		
ADMIN. SUPPORT AREA	2	503 SF
CHAMBERS	2	434 SF
CHIEF	1	204 SF
CONSTABLE	1	251 SF
COURT COORD.	2	193 SF
DISPATCHER	1	76 SF
OFFICE	1	117 SF
RECEPTION	1	79 SF
SERGEANT	2	267 SF
VEST.	1	41 SF
	14	2,165 SF
OPEN WORK AREA		
WORK AREA	1	1,331 SF
	1	1,331 SF
PUBLIC SPACES		
ALCOVE	2	156 SF
INTERVIEW	1	150 SF
LOBBY	5	1,439 SF
MEN	2	107 SF
WOMEN	2	107 SF
	12	1,959 SF
SUPPORT SPACES		
BIRTH RECORDS	2	107 SF
BREAKROOM	3	507 SF
EVIDENCE ROOM	1	116 SF
JANITOR	3	64 SF
MEN	1	56 SF
STORAGE	3	128 SF
TOILET	5	267 SF
UNIFORMS	1	116 SF
WOMEN	1	56 SF
	20	1,415 SF
TOTAL SPACES AND NET BUILDING AREA	71	10,616 SF
TOTAL WALL AND EXTERIOR AREA		1,826 SF
TOTAL BUILDING SLAB AREA		12,442 SF

Space Legend

- PUBLIC SPACES
- CIRCULATION
- SUPPORT SPACES
- COMMON SPACES
- OFFICE
- OPEN WORK AREA
- CONFERENCE ROOM
- COURTROOM



OVERALL FLOOR PLAN - JUSTICE CENTER



McAllen
1007 Walnut Ave.
McAllen, Texas 78501
V. 956.686.7771
F. 956.687.3433
www.rofainc.com

McAllen Harlingen
COPYRIGHT ROFA ARCHITECTS 2017

CONSULTANTS:

PRELIMINARY DESIGN
NOT FOR CONSTRUCTION

HIDALGO COUNTY PRECINCT No.4
NEW SERVICES FACILITY AND
JUSTICE CENTER
HIDALGO COUNTY, TEXAS
1212 SOUTH 25TH AVENUE,
EDINBURG, TEXAS 78542

PROJECT NO: 2018.19
DATE: 5/13/2019 2:01:39 PM
STARTING DATE:
CK BY:Checker DWN BY: Author

OVERALL FLOOR
PLAN - JUSTICE
CENTER

A1.2

PRELIMINARY DESIGN
NOT FOR CONSTRUCTION

HIDALGO COUNTY PRECINCT No.4
NEW SERVICES FACILITY AND
JUSTICE CENTER
HIDALGO COUNTY, TEXAS
EDINBURG, TEXAS 78542
1212 SOUTH 25TH AVENUE.

PROJECT NO: 2018.19
DATE: 5/13/2019 2:01:59 PM
STARTING DATE:
CK BY:Checker DWN BY: Author

PARTIAL FLOOR PLAN
- JP - PL 1



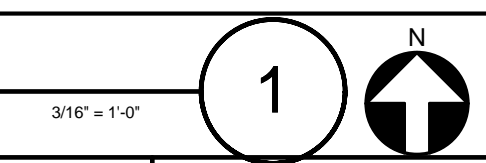
HIDALGO COUNTY
JUSTICE CENTER - JP PCT 4 - PL 1

Name / Type of Space	Qty	Total ASF
CIRCULATION		
CORRIDOR	2	255 SF
	2	255 SF
COMMON SPACES		
MDF	1	64 SF
STORAGE	1	30 SF
	2	94 SF
COURTROOM		
ALCOVE	2	56 SF
COPY AREA	1	23 SF
JURY ROOM	1	176 SF
JUSTICE OF THE PEACE PCT 4 PL 1	1	979 SF
WAITING	1	45 SF
	6	1,279 SF
OFFICE		
ADMIN. SUPPORT AREA	1	252 SF
CHAMBERS	1	217 SF
COURT COORD.	1	97 SF
	3	565 SF
PUBLIC SPACES		
ALCOVE	1	78 SF
LOBBY	2	656 SF
MEN	1	53 SF
WOMEN	1	53 SF
	5	841 SF
SUPPORT SPACES		
BIRTH RECORDS	1	53 SF
BREAKROOM	1	149 SF
JANITOR	1	21 SF
STORAGE	1	43 SF
TOILET	2	107 SF
	6	373 SF
TOTAL SPACES AND NET BUILDING AREA	24	3,407 SF
TOTAL WALL AND EXTERIOR AREA		678 SF
TOTAL BUILDING SLAB AREA		4,085 SF

Space Legend

- PUBLIC SPACES
- CIRCULATION
- SUPPORT SPACES
- COMMON SPACES
- OFFICE
- CONFERENCE ROOM
- COURTROOM

FLOOR PLAN - JP - PL 1



M
L
K
I
H
G
F
E
D
C
B
A

1 2 3 4 5 6 7 8 9 10 11 12 13 14 15



**HIDALGO COUNTY
JUSTICE CENTER - CONSTABLE PCT 4**

Name / Type of Space	Qty	Total ASF
CIRCULATION		
CORRIDOR	3	159 SF
	3	159 SF
COMMON SPACES		
ELECTRICAL	1	93 SF
	1	93 SF
CONFERENCE ROOM		
CONFERENCE	1	302 SF
	1	302 SF
OFFICE		
CHIEF	1	204 SF
CONSTABLE	1	251 SF
DISPATCHER	1	76 SF
OFFICE	1	117 SF
RECEPTION	1	79 SF
SERGEANT	2	267 SF
VEST.	1	41 SF
	8	1,035 SF
OPEN WORK AREA		
WORK AREA	1	1,331 SF
	1	1,331 SF
PUBLIC SPACES		
INTERVIEW	1	150 SF
LOBBY	1	127 SF
	2	277 SF
SUPPORT SPACES		
BREAKROOM	1	210 SF
EVIDENCE ROOM	1	116 SF
JANITOR	1	21 SF
MEN	1	56 SF
STORAGE	1	43 SF
TOILET	1	53 SF
UNIFORMS	1	116 SF
WOMEN	1	56 SF
	8	669 SF
TOTAL SPACES AND NET BUILDING AREA	24	3,866 SF
TOTAL WALL AND EXTERIOR AREA		477 SF
TOTAL BUILDING SLAB AREA		4,343 SF

Space Legend

- PUBLIC SPACES
- CIRCULATION
- SUPPORT SPACES
- COMMON SPACES
- OFFICE
- OPEN WORK AREA
- CONFERENCE ROOM
- COURTROOM

PRELIMINARY DESIGN
NOT FOR CONSTRUCTION

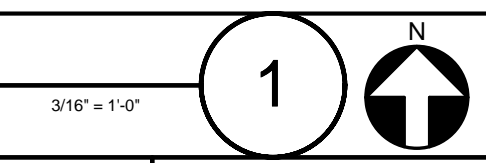
NO. DATE REVISIONS

HIDALGO COUNTY PRECINCT NO.4
NEW SERVICES FACILITY AND
JUSTICE CENTER
HIDALGO COUNTY, TEXAS
EDINBURG, TEXAS 78542
1212 SOUTH 25TH AVENUE.

PROJECT NO: 2018.19
DATE: 5/13/2019 2:02:23 PM
STARTING DATE:
CK BY:Checker DWN BY: Author

PARTIAL FLOOR PLAN
- CONSTABLE

FLOOR PLAN - CONSTABLE PCT 4

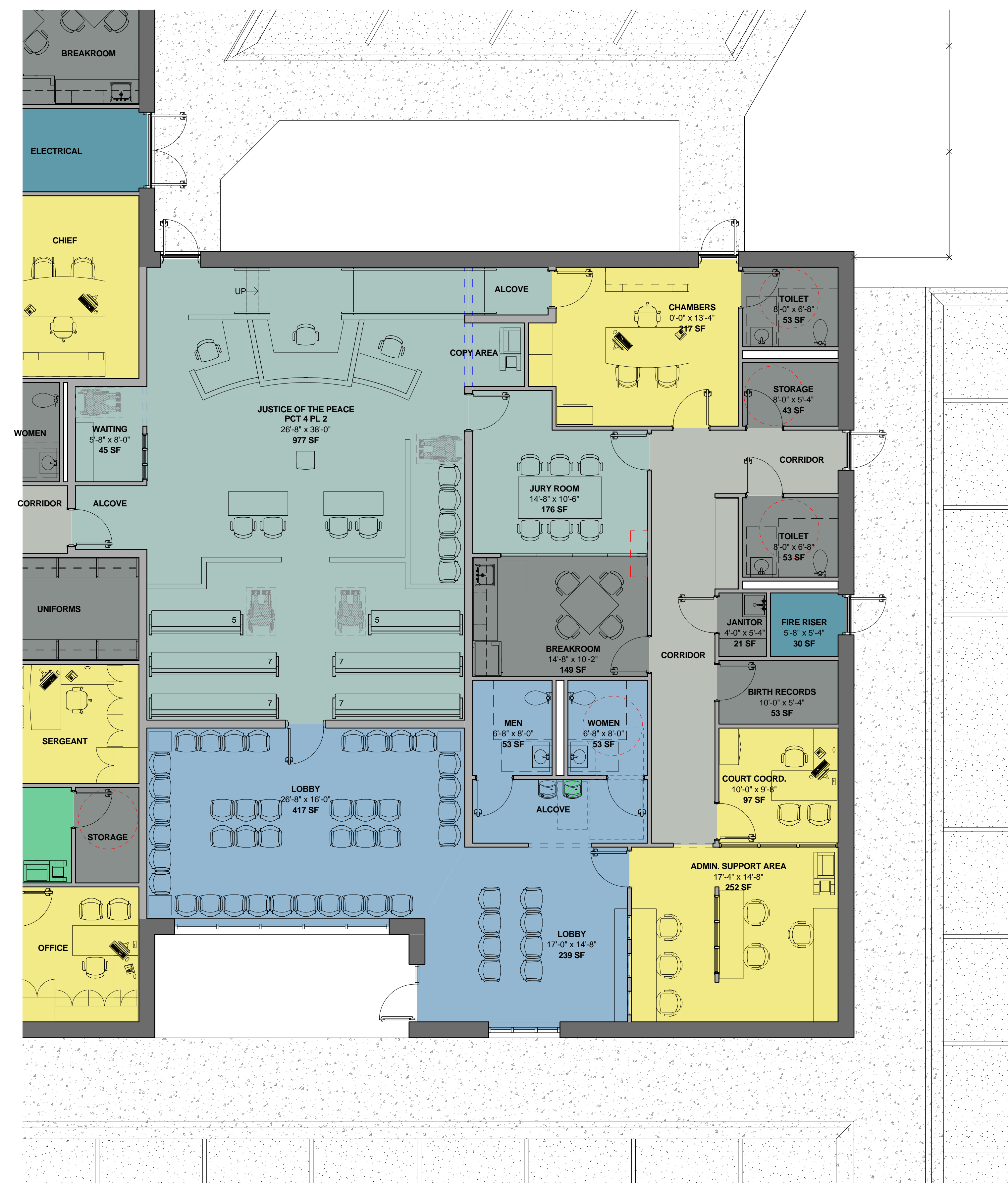


PRELIMINARY DESIGN
NOT FOR CONSTRUCTION

HIDALGO COUNTY PRECINCT NO. 4
NEW SERVICES FACILITY AND
JUSTICE CENTER
HIDALGO COUNTY, TEXAS
EDINBURG, TEXAS 78542

PROJECT NO: 2018.19
DATE: 5/13/2019 2:02:42 PM
STARTING DATE:
CK BY: Checker DWN BY: Author

PARTIAL FLOOR PLAN
- JP - PL 2



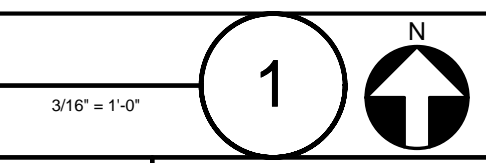
HIDALGO COUNTY
JUSTICE CENTER - JP PCT 4 - PL 2

Name / Type of Space	Qty	Total ASF
CIRCULATION		
CORRIDOR	2	255 SF
	2	255 SF
COMMON SPACES		
FIRE RISER	1	30 SF
	1	30 SF
COURTROOM		
ALCOVE	2	57 SF
COPY AREA	1	23 SF
JURY ROOM	1	176 SF
JUSTICE OF THE PEACE PCT 4 PL 2	1	977 SF
WAITING	1	45 SF
	6	1,279 SF
OFFICE		
ADMIN. SUPPORT AREA	1	252 SF
CHAMBERS	1	217 SF
COURT COORD.	1	97 SF
	3	565 SF
PUBLIC SPACES		
ALCOVE	1	78 SF
LOBBY	2	656 SF
MEN	1	53 SF
WOMEN	1	53 SF
	5	841 SF
SUPPORT SPACES		
BIRTH RECORDS	1	53 SF
BREAKROOM	1	149 SF
JANITOR	1	21 SF
STORAGE	1	43 SF
TOILET	2	107 SF
	6	373 SF
TOTAL SPACES AND NET BUILDING AREA	23	3,343 SF
TOTAL WALL AND EXTERIOR AREA		672 SF
TOTAL BUILDING SLAB AREA		4,015 SF

Space Legend

- PUBLIC SPACES
- CIRCULATION
- SUPPORT SPACES
- COMMON SPACES
- OFFICE
- OPEN WORK AREA
- COURTROOM

FLOOR PLAN - JP - PL 2



M
L
K
I
H
G
F
E
D
C
B
A

1 2 3 4 5 6 7 8 9 10 11 12 13 14 15