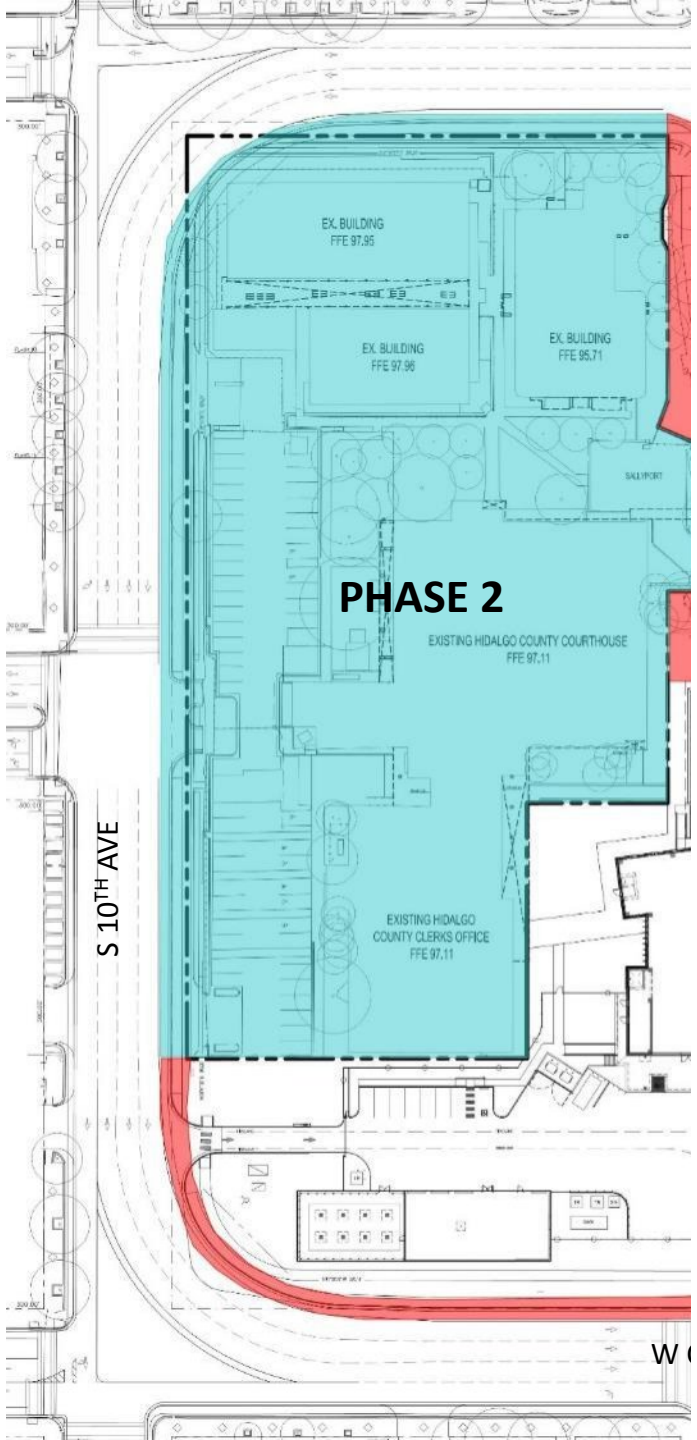
A landscape architectural site plan for the Hidalgo County Courthouse. The plan features a central building footprint, a winding path, and numerous circular tree symbols of varying sizes. The site is bounded by a road on the left and bottom, with firelanes indicated. A date stamp '8-19-2020' is located in the bottom left corner. The title 'HIDALGO COUNTY COURTHOUSE SITE REVISIONS' is prominently displayed in the center.

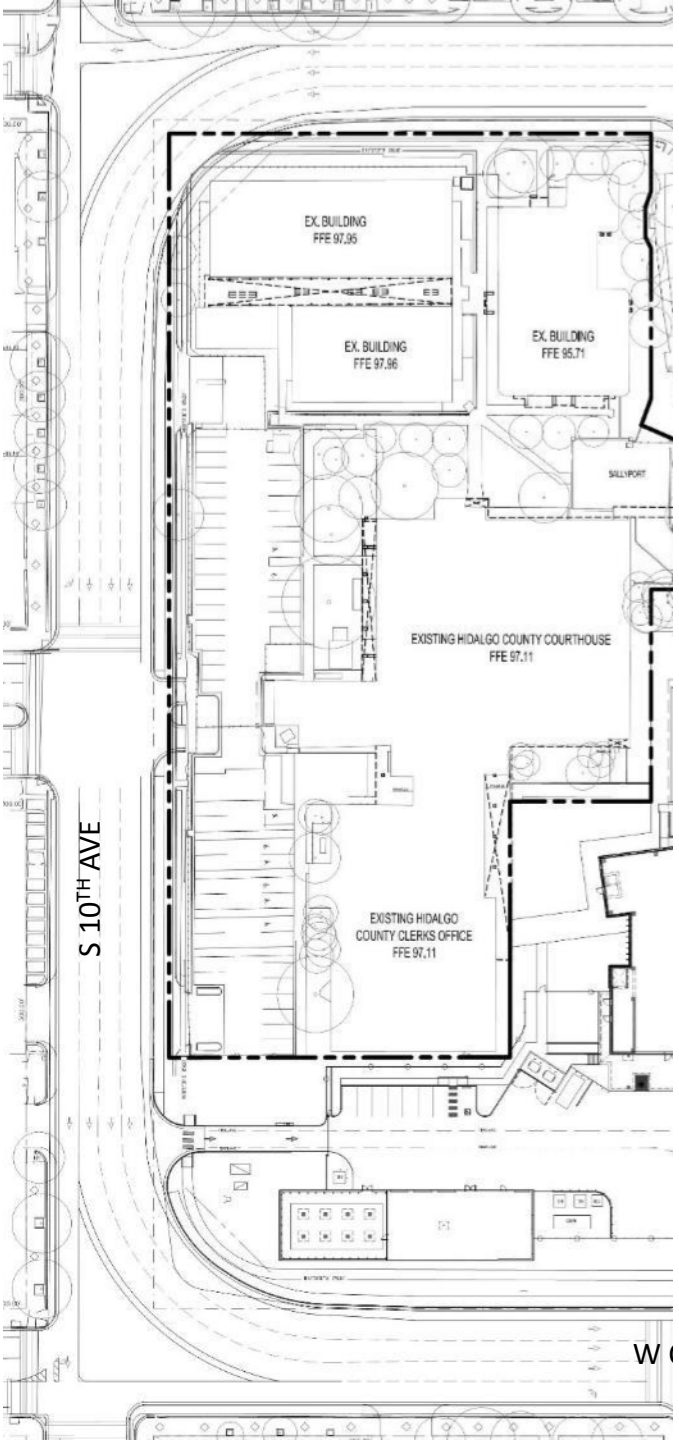
HIDALGO COUNTY COURTHOUSE SITE REVISIONS

8-19-2020

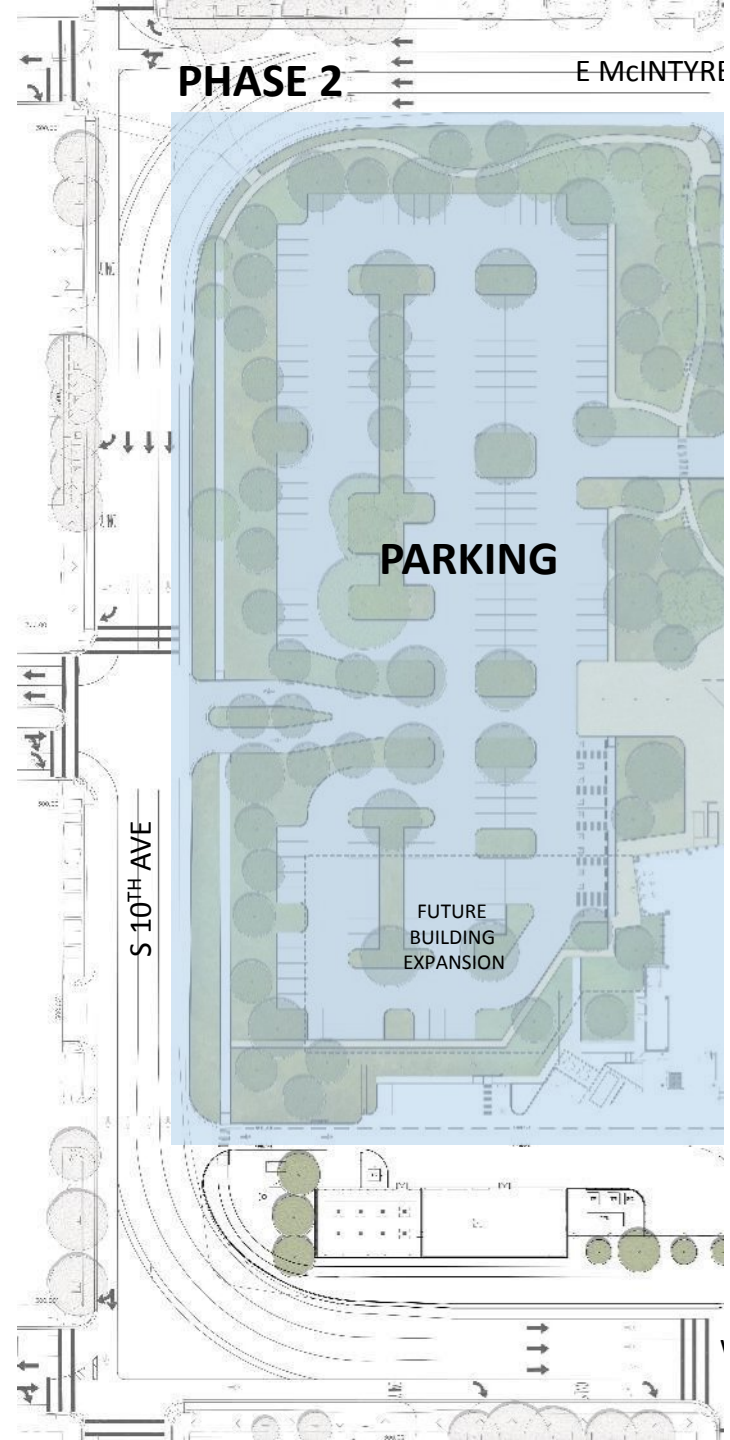
SITE REVISION PHASES



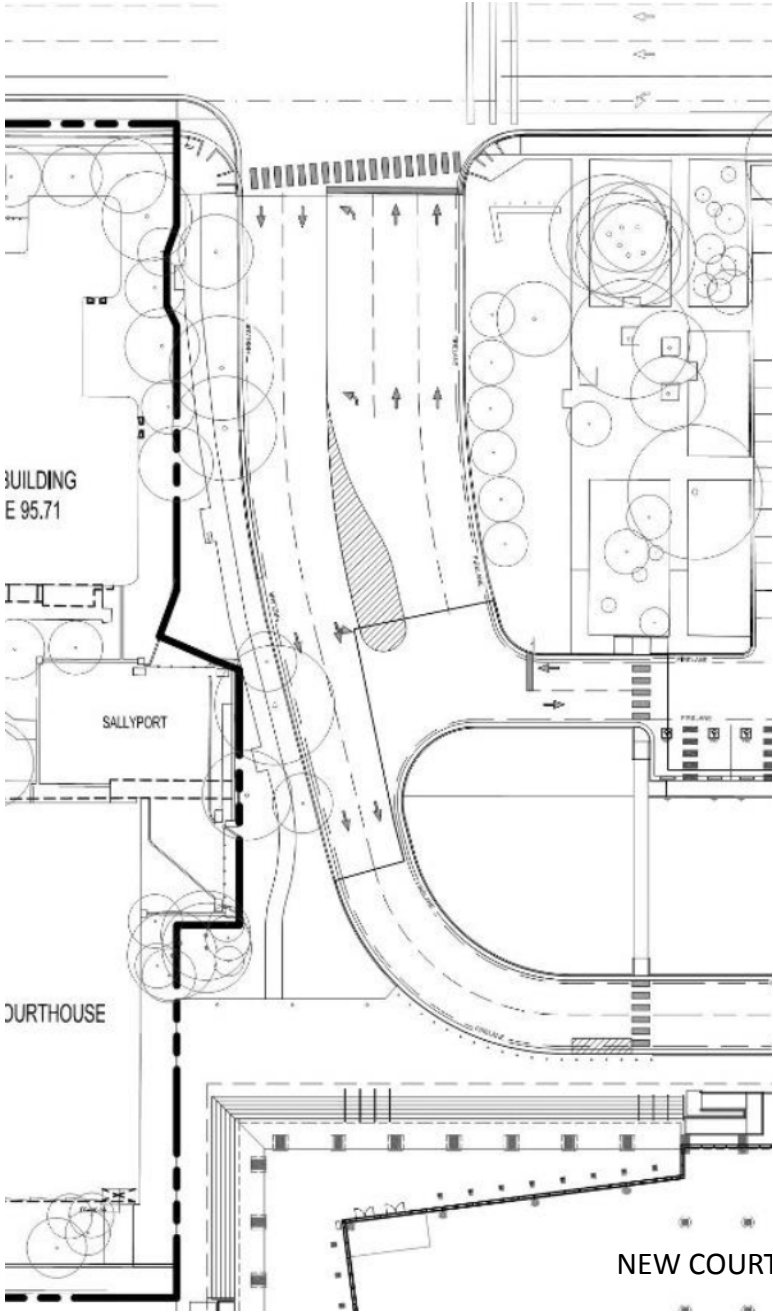
CURRENT SITE PLAN



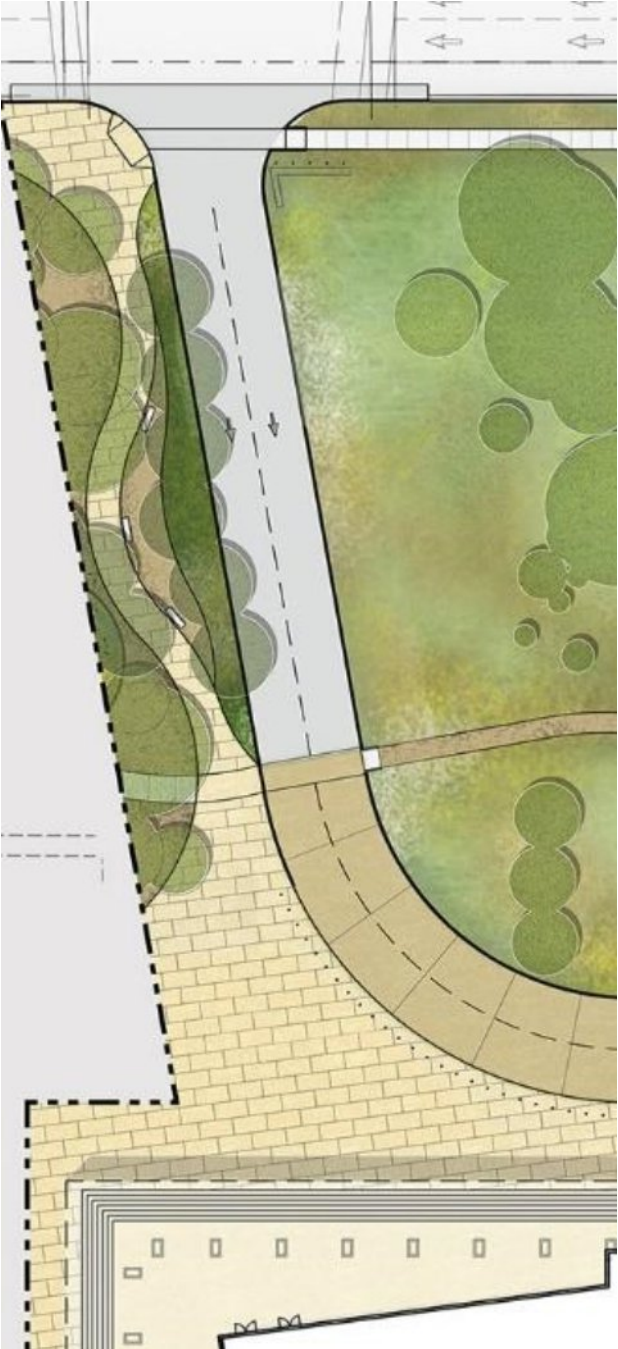
NEW SITE PLAN



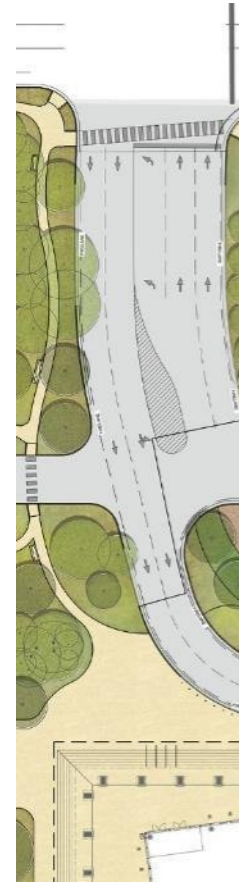
CURRENT SITE PLAN



PREVIOUS DESIGN



DESIGN CONCEPTS



THE SQUARE

DESIGN CONCEPTS



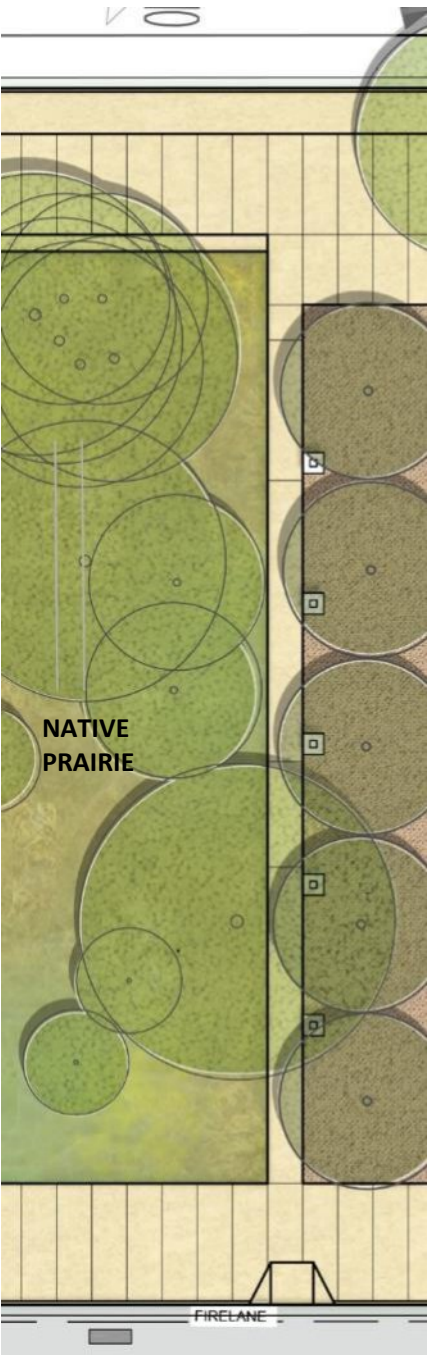
THE SQUARE

DESIGN CONCEPTS

THE SQUARE



THE GREEN



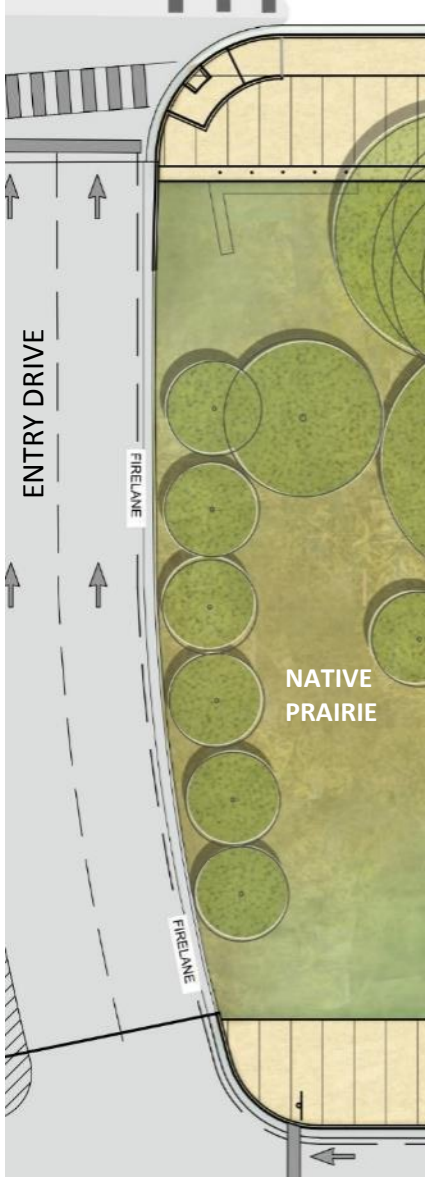
MONUMENT PLINTH



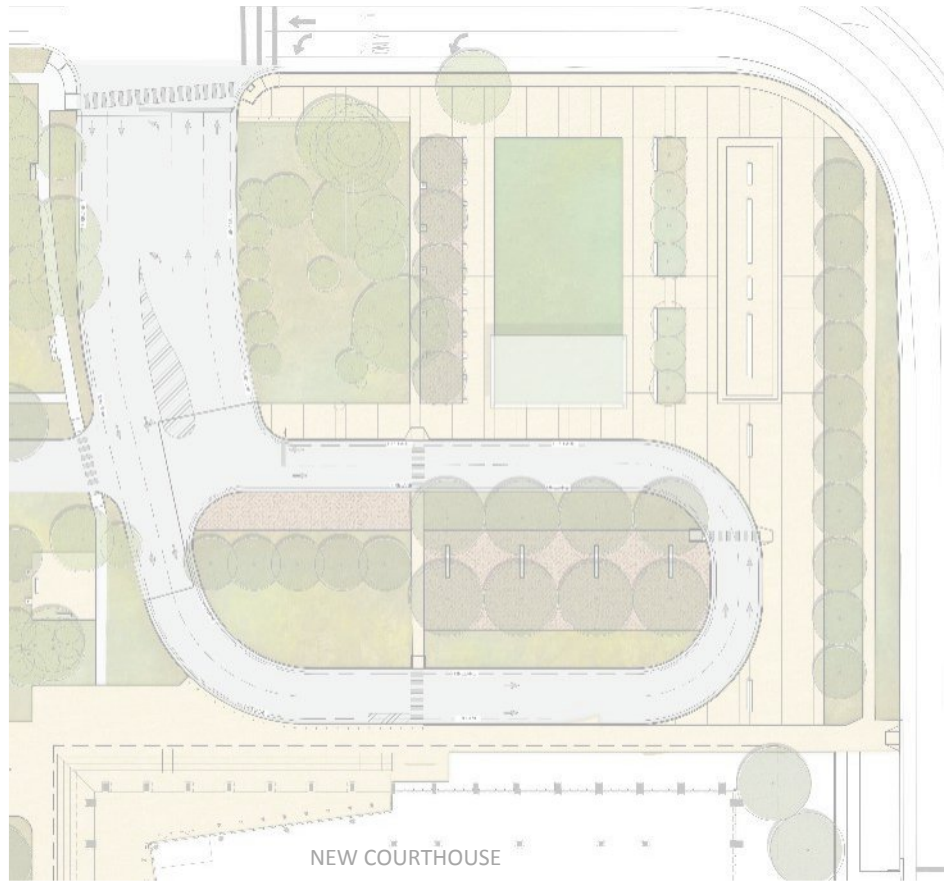
E



THE GROVE



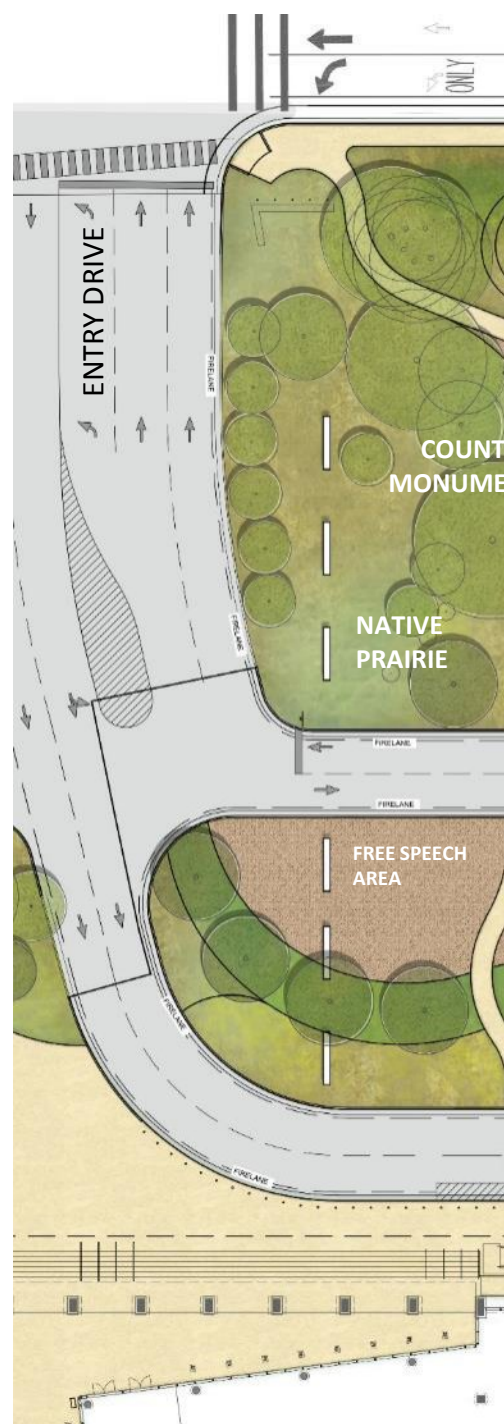
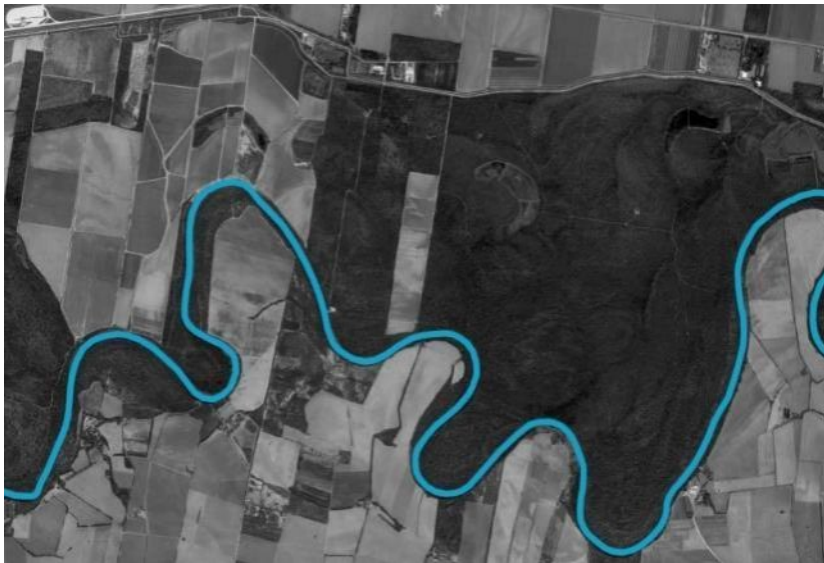
DESIGN CONCEPTS



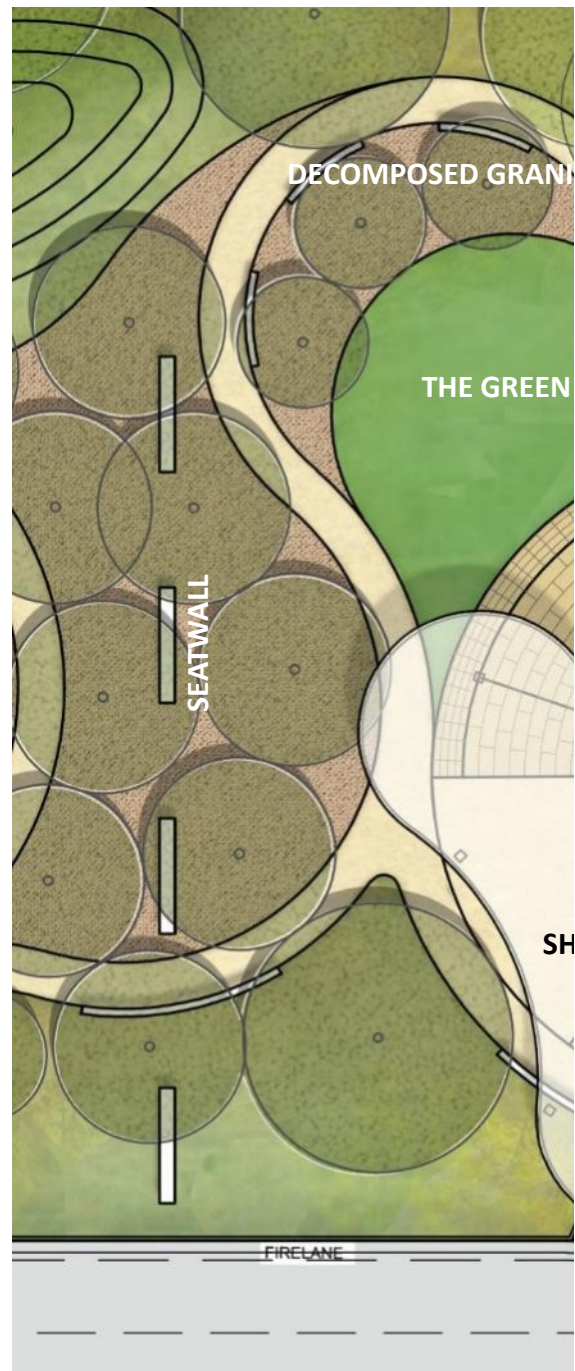
THE SQUARE

DESIGN CONCEPTS

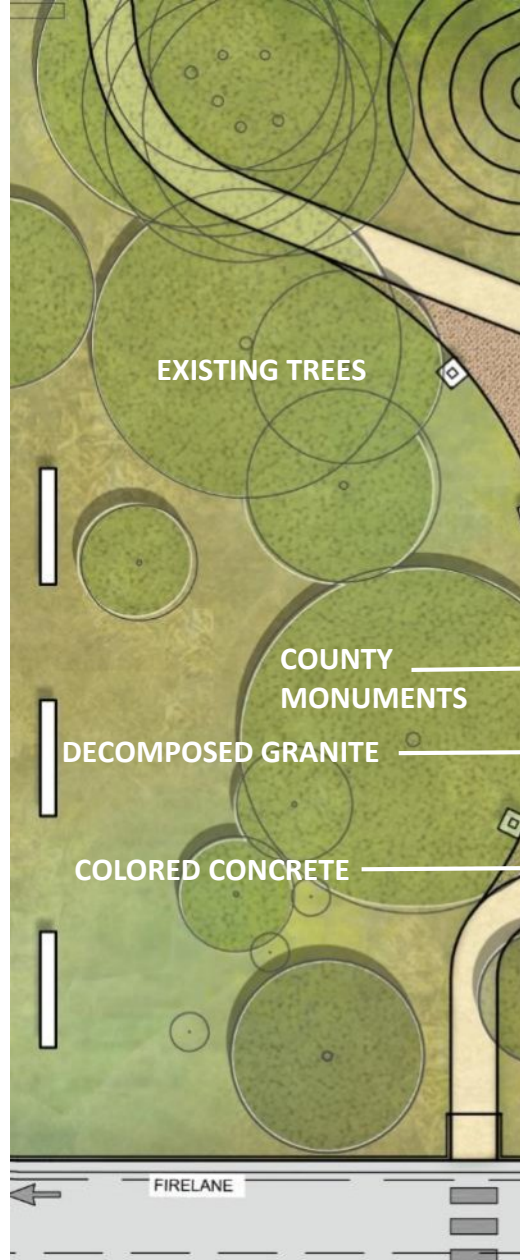
MEANDER



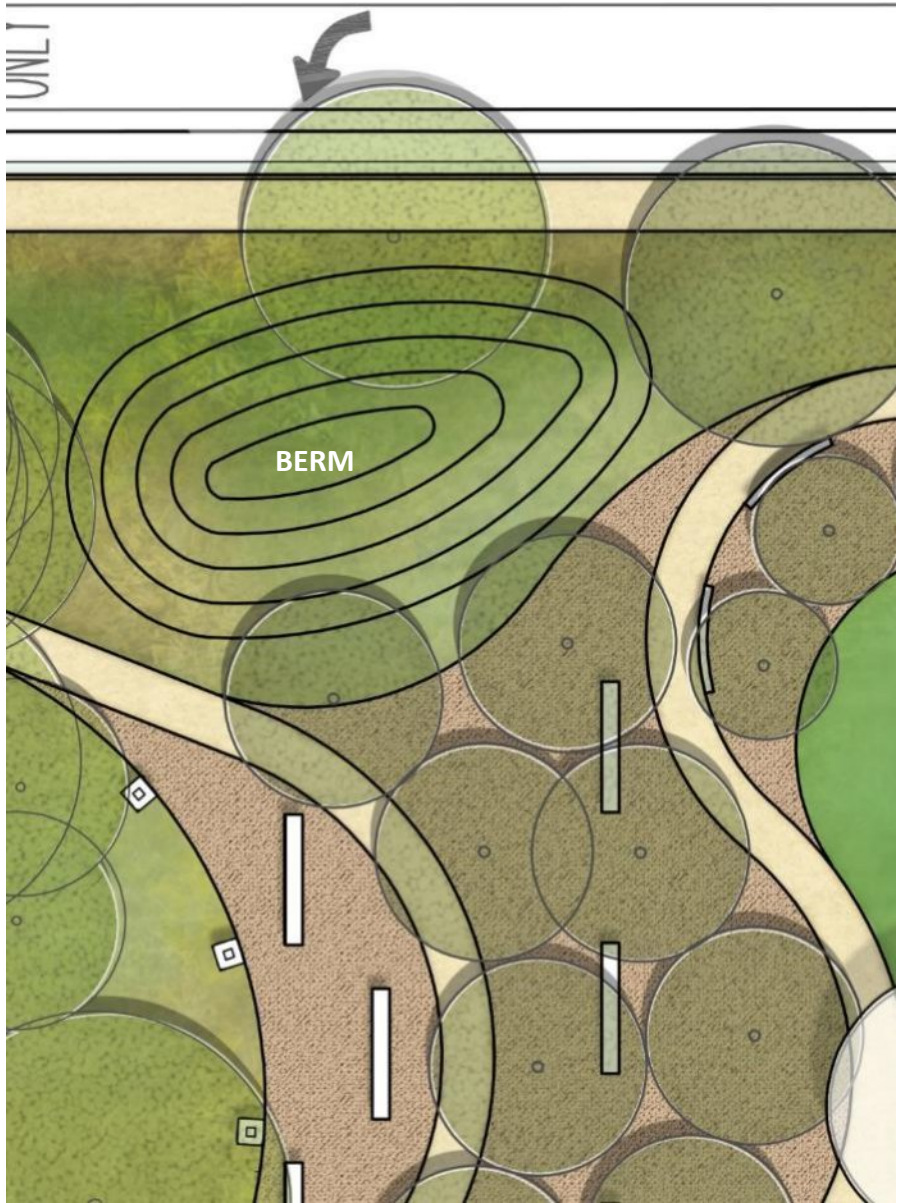
THE PLAZA



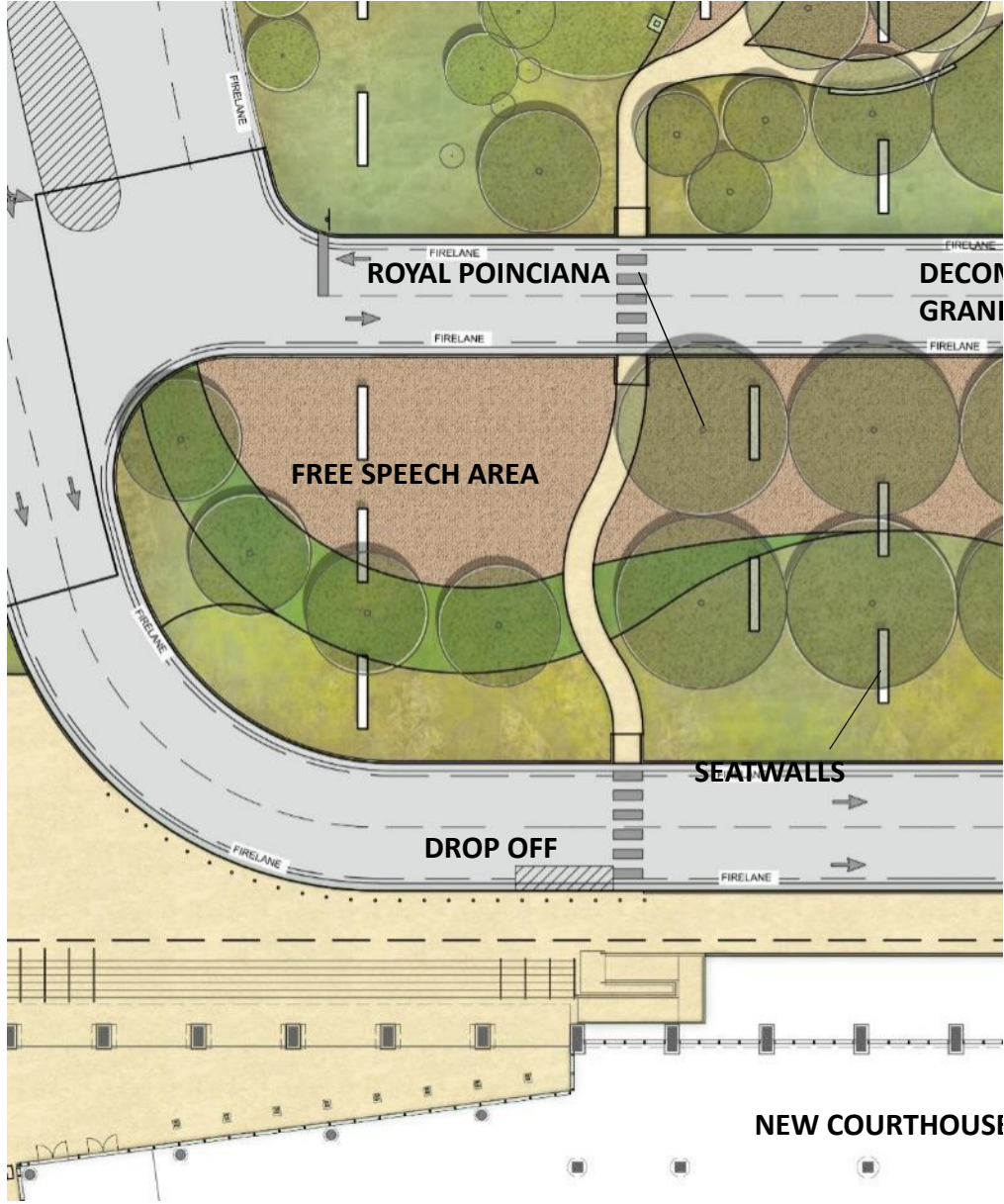
THE GROVE



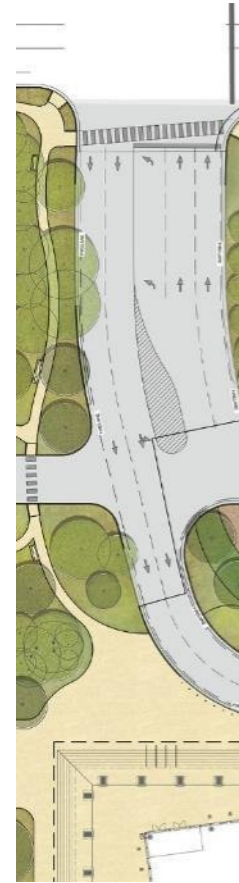
THE RISE



THE ENTRY

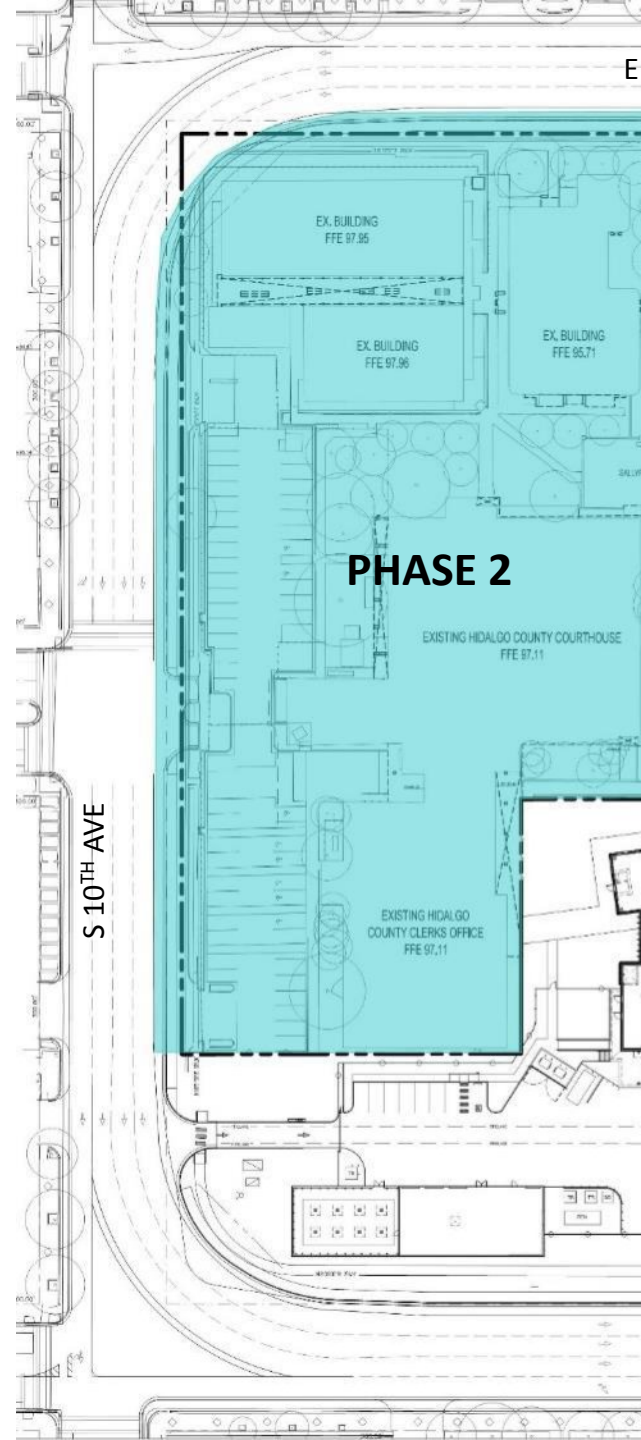


DESIGN CONCEPTS



THE SQUARE

PHASE 2 – SITE REDESIGN



PARKING

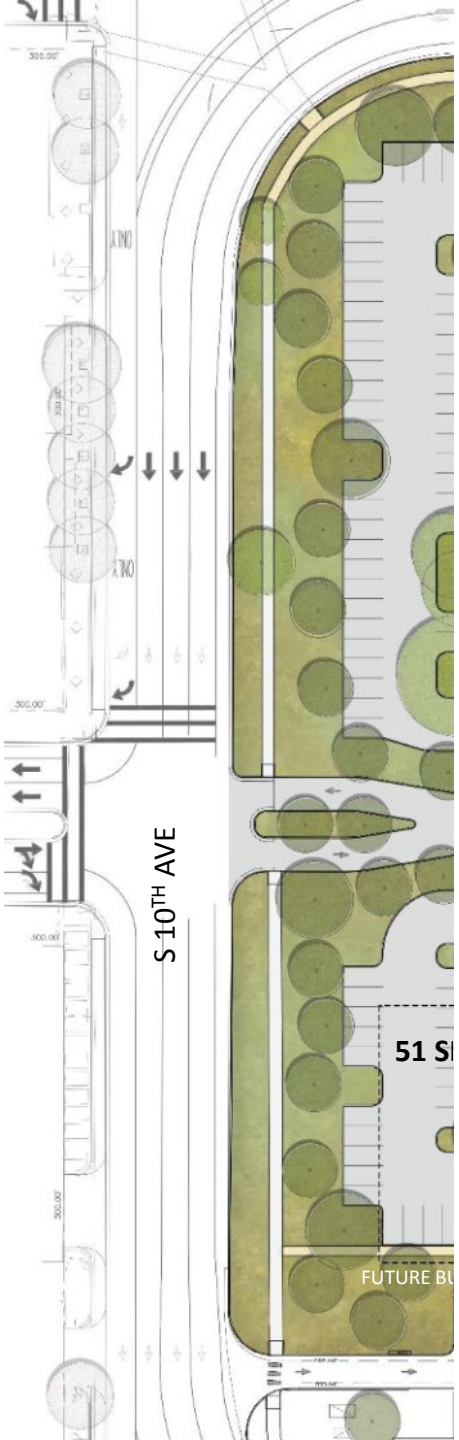
Parking Count


Parking Spaces – North Lot: 139

Parking Spaces – South Lot (DA): 51

Accessible Spaces: 10

Total Spaces: 200





HIDALGO COUNTY COURTHOUSE SITE REVISIONS

8-19-2020