

# TEXAS GENERAL LAND OFFICE CDBG-MIT 2015 & 2016 FLOODS STATE MITIGATION COMPETITIONS

## Citizen Participation Plan



**PUBLIC HEARING 10-6-2020**





# OVERVIEW



- **Hidalgo County & Hidalgo County Drainage District No. 1 are submitting joint applications for funding from GLO's CDBG-MIT 2015 & 2016 Floods State Mitigation Competitions**
- **Funding will be used for construction of the Main Floodwater Channel Expansion Project - Phases 1 & 2 - to provide regional flood control benefits to Hidalgo County**
- **Requesting \$20 Million Total**
  - **\$10 Million for Phase 1 from CDBG-MIT 2015**
  - **\$10 Million for Phase 2 from CDBG-MIT 2016**
- **Hidalgo County & Drainage District No. 1 are seeking public input and comments as part of its Citizen Participation Plan**



# BACKGROUND



## What is a CDBG-MIT Project?

- A combination of eligible activities working together to reduce risk of natural hazards for a defined geographic area & population.
- Proposed activities must support the overall mitigation project, which will meet only one national objective.



# CDBG-MIT PROJECTS



## **Project Service Area must have either:**

- Urgent Mitigation Need (UMN); or
- Be comprised of Low- and Moderate-Income (LMI) beneficiaries.

## **Each Proposed Project must mitigate against one of the following identified risks:**

- Hurricanes,
- Tropical Storms/Depressions,
- Severe Coastal/Riverine Flooding,
- Storms, and
- Tornadoes

*(Hazards vary for 2015, 2016, & Hurricane Harvey)*



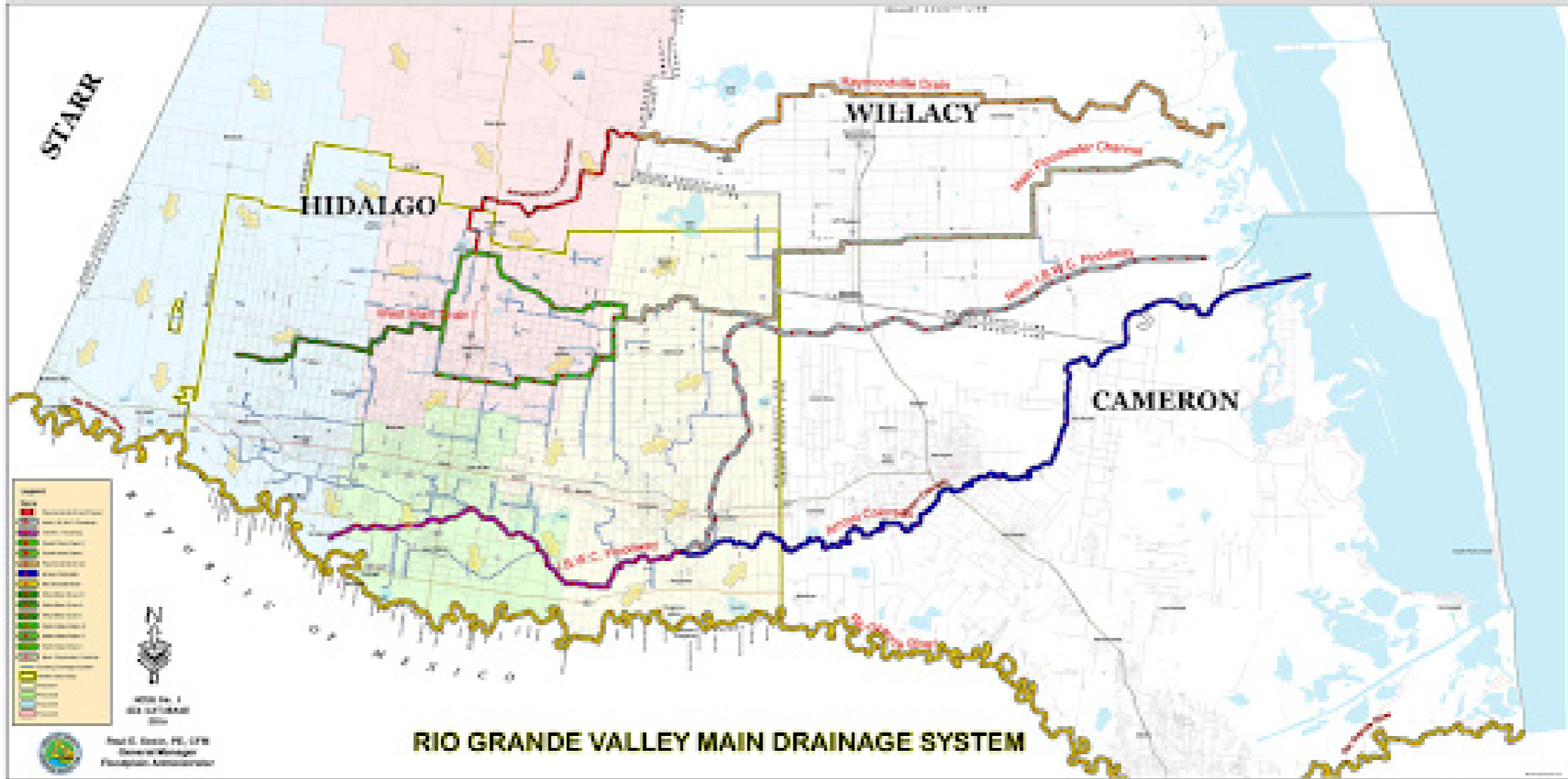
# ELIGIBILITY CRITERIA



- **Project must meet HUD's definition of mitigation activities:**  
*"Increase resilience to disasters and reduce or eliminate the long-term risk of loss of life, injury, damage to and loss of property, and suffering and hardship, by lessening the impact of future disasters."*
- **Must meet GLO Application project definition**
- **Must address identified current & future risks**
- **Must meet definition of CDBG-MIT eligible activity and National Objectives (UMN or LMI)**
- **Must include a plan for long-term funding and management of M&O outside grant funds**
- **Cost verification controls**



# RGV MAIN DRAINAGE SYSTEM





# PROJECT NEED

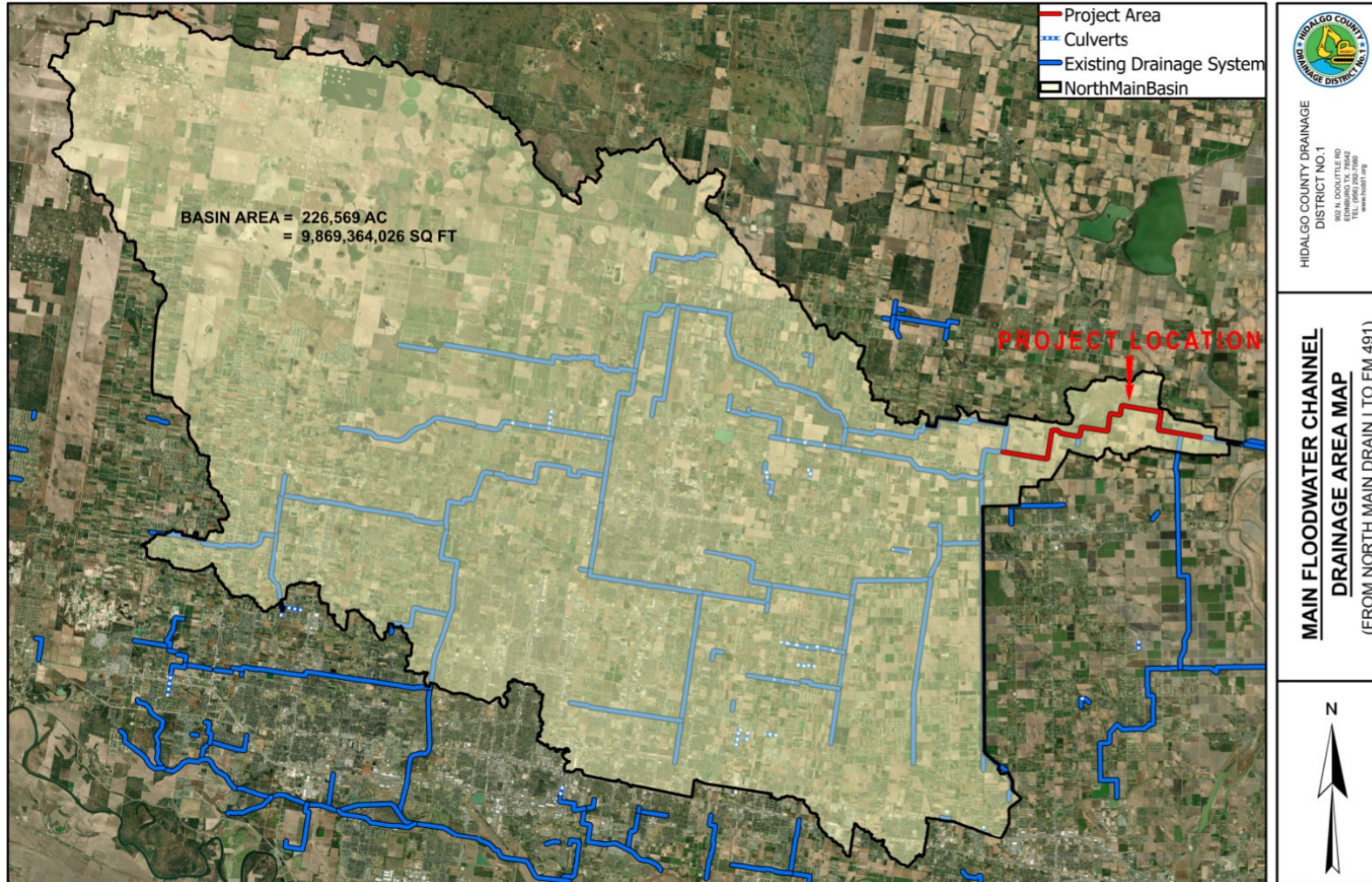


*Saturation of Main Floodwater Channel*

- **Saturation of Main Floodwater Channel is source of majority of flooding in Hidalgo County.**
- **Stormwater outfalls to Gulf of Mexico through one of two routes**
  - IBCW Floodway/Arroyo Colorado
  - Main Floodwater Channel
- **Expanding the capacity of the Main Floodwater Channel will produce most immediate and cost-effective, regional flood control benefit for low- to moderate-income housing in all of Hidalgo County**



# PROJECT IMPACT AREA

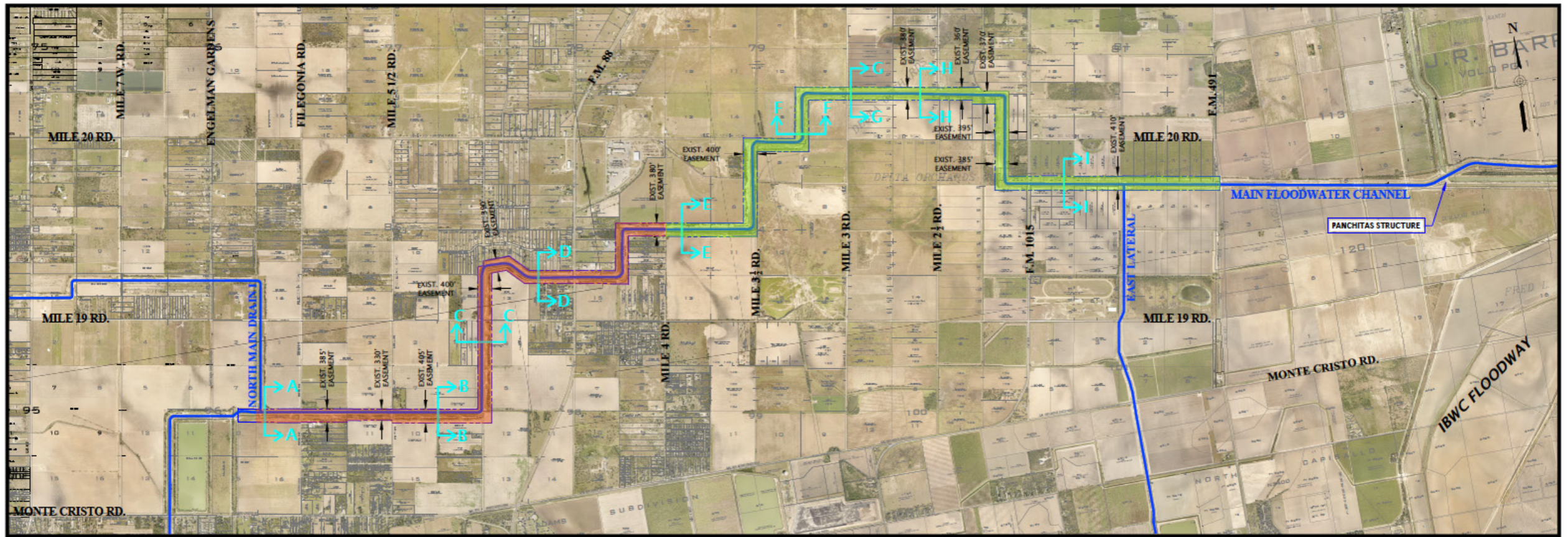


- Basin area of over 225,000 acres that corresponds to the most-heavily populated and urbanized areas in Hidalgo County.
- Area includes thousands of local ditches (from neighborhoods to commercial developments to irrigation channels to municipal drainage systems) that ultimately outfall to the Main Floodwater Channel.
- Area includes unincorporated areas of Hidalgo County, as well as including but not limited to the cities of McAllen, Mission, Edinburg, Pharr, Palmhurst, Alton, San Juan, Alamo, Elsa, Edcouch, and La Villa.

# MAIN FLOODWATER CHANNEL EXPANSION PROJECT

PHASE 1 - PINK

PHASE 2 - GREEN





# FUNDING REQUEST



## APPLICATION FOR CDBG-MIT 2015

\$10 Million for Main Floodwater Channel Expansion - Phase 1



Project Details

Expand width of over 3.5 miles of the Main Floodwater Channel from 100 ft. to 350-400 ft.



Project Cost

\$10 Million



Project Impact

- Increase capacity by nearly 2 million cubic yards
- Mitigating widespread recurring and future flooding
- Protect properties of LMI households



# FUNDING REQUEST



## APPLICATION FOR CDBG-MIT 2016

\$10 Million for Main Floodwater Channel Expansion - Phase 2



### Project Details

Expand width of approximately 4 miles of the Main Floodwater Channel from 100 ft. to 350-400 ft.



### Project Cost

\$10 Million

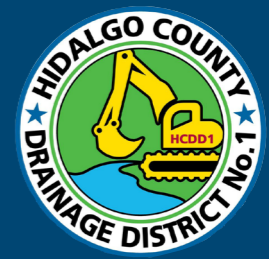


### Project Impact

- Increase capacity by nearly 2 million cubic yards
- Mitigating widespread recurring and future flooding
- Protect properties of LMI households



# PUBLIC INPUT



- As part of its Citizen Participation Plan, Hidalgo County will be accepting public comments and hosting public hearings.
- Members of the public are strongly encouraged to participate in this process.
- Public hearings will be held at 10:00 a.m. on 10/6/2020 and at 10:00 a.m. on 10/13/2020 at 100 E. Cano St., Edinburg, Texas 78539, in person, telephonically, or via Zoom.
- For more information or to view a copy of the applications, visit <https://www.hidalgocounty.us/mitigation>.
- To submit public comments:
  - Call (956) 968-8733
  - E-mail [mitigation@co.hidalgo.tx.us](mailto:mitigation@co.hidalgo.tx.us)



*Your comments and input will serve to shape and strengthen Hidalgo County's efforts to mitigate flooding in our area!*

---

**THANK YOU**