

Exhibit "1"

Floorplan 1st Floor Santa Maria Building 112 E. Cano Edinburg, Texas 78539

Total Square
Footage 1st Floor

6,178 sq. ft.

Office 4
Total: 213.3 sq. ft.
Large Office: 118 sq. ft. (10.204 x 11.564)
Small Office: 91.3 sq. ft. (10.215 x 8.938)

Office 5
Total: 213.2 sq. ft.
Large Office: 118 sq. ft. (10.23 x 11.536)
Small Office: 91.2 sq. ft. (10.21 x 8.934)

Office 6
Total: 213.5 sq. ft.
Large Office: 118.6 sq. ft. (10.251 x 11.569)
Small Office: 91.4 sq. ft. (10.237 x 8.933)

Office 7
168.9 sq. ft.
16.52 ft. x 10.227 ft.

Conference Room
241.3 sq. ft.
11.971 ft. x 20.156 ft.

Office 3
210.6 sq. ft.
15.344 ft x 13.727 ft

Office 2
210.3 sq. ft.
15.329 ft x 13.721 ft

Office 1
210.6 sq. ft.
15.284 ft x 13.778 ft

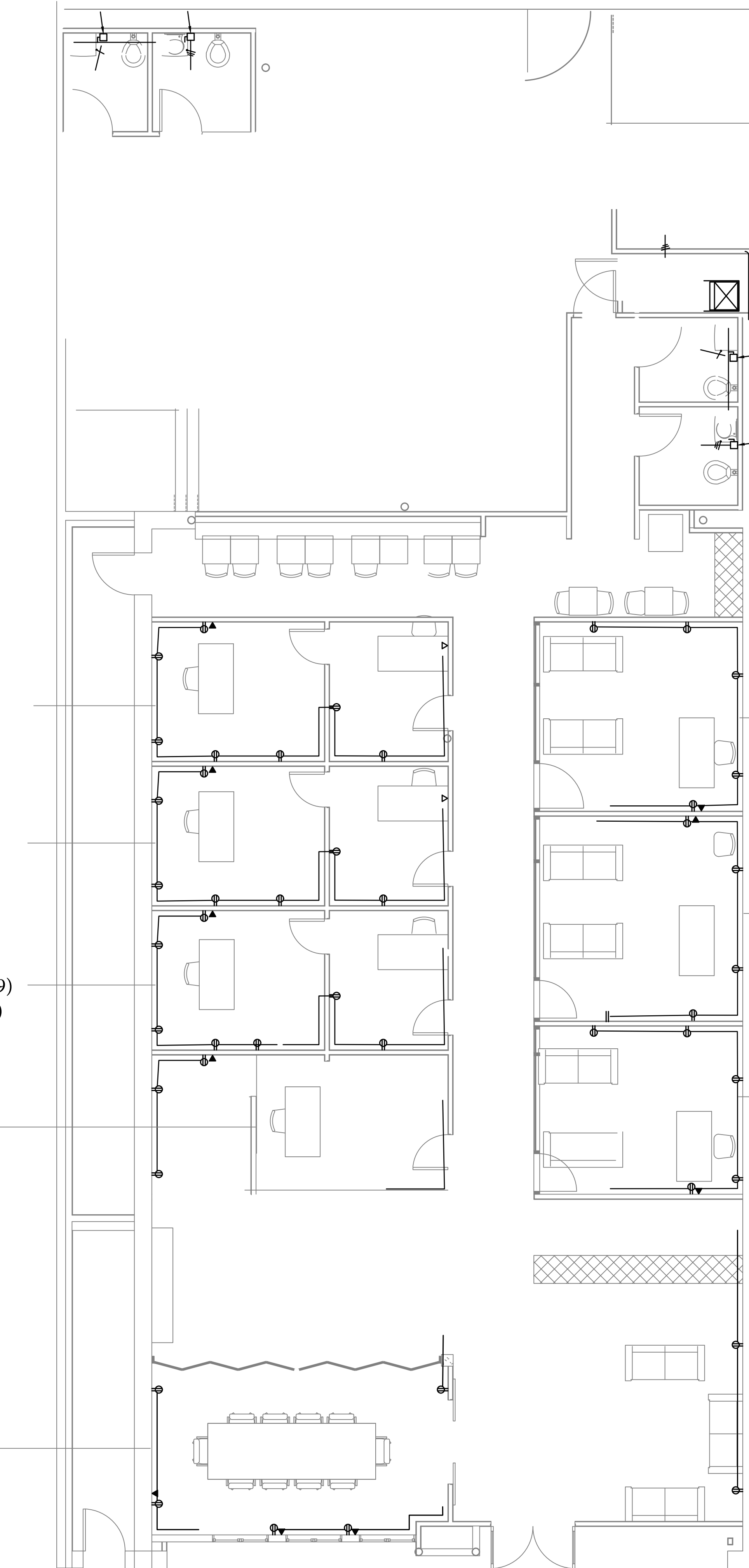


EXHIBIT "2"

PROPERTY/LEGAL DESCRIPTION

Property (including any improvements):

Santa Maria Building
1st Floor - 6,187 sq. ft.
112 E. Cano
Edinburg, Texas

Legal Description:

Edinburg Original Townsite Lot 7 Exc W 6 ½ inches Lot 8 exc a Tri Tr On E side
Bng 20.1 Sq. Ft.

Hidalgo County Appraisal District Property ID:

165145

Hidalgo County Appraisal Geographic ID:

E3300-00-276-0007-00