



**PART 6. RESPONSIBILITIES AND OBLIGATIONS**

This Authorization does not waive the parties' responsibilities and obligations provided under the **Agreement**.

**PART 7. ACKNOWLEDGEMENT AND CONFIRMATION**

Acknowledgement and Confirmation by *Hidalgo County Precinct No.1*, as to content and detail of this **Work Authorization No. \_1\_**.

**HIDALGO COUNTY PRECINCT NO. 1:**

By: \_\_\_\_\_  
Hon. David Fuentes, Commissioner, Pct. 1

**PART 8. ACCEPTANCE AND APPROVAL**

This Work Authorization is hereby accepted, approved by Hidalgo County Commissioners' Court on \_\_\_\_\_ as indicated below and effective as of \_\_\_\_\_ day of \_\_\_\_\_, 202\_\_\_\_.

**THE ENGINEER:**  
**Alpha Infrastructure Engineering PLLC**

**THE OWNER:**  
**HIDALGO COUNTY**

By: \_\_\_\_\_  
Juan M. Gamez, PE / President

By: \_\_\_\_\_  
Richard Cortez, County Judge

**ATTEST:**

By: \_\_\_\_\_  
Arturo Guajardo Jr., County Clerk

**BY:** \_\_\_\_\_

Attachments:

- Exhibit A
- Exhibit B
- Exhibit B Map
- Exhibit C
- Exhibit D1

# **EXHIBIT B**

## **Scope of Services to be provided by the Engineer**

The following is a listing of the Scope of Services to be provided by the Engineer under this Contract:

### **GENERAL MANAGEMENT / COORDINATION**

1. Meet w/ Owner to establish Project Scope and Design Criteria.
2. Meet w/ Delta Lake Irrigation District to establish Scope of Work on Canal and Drain Ditch.
3. Meet w/ Owner's Staff on all project related items.
4. Perform Quality Control & Quality Assurance (QCQA).

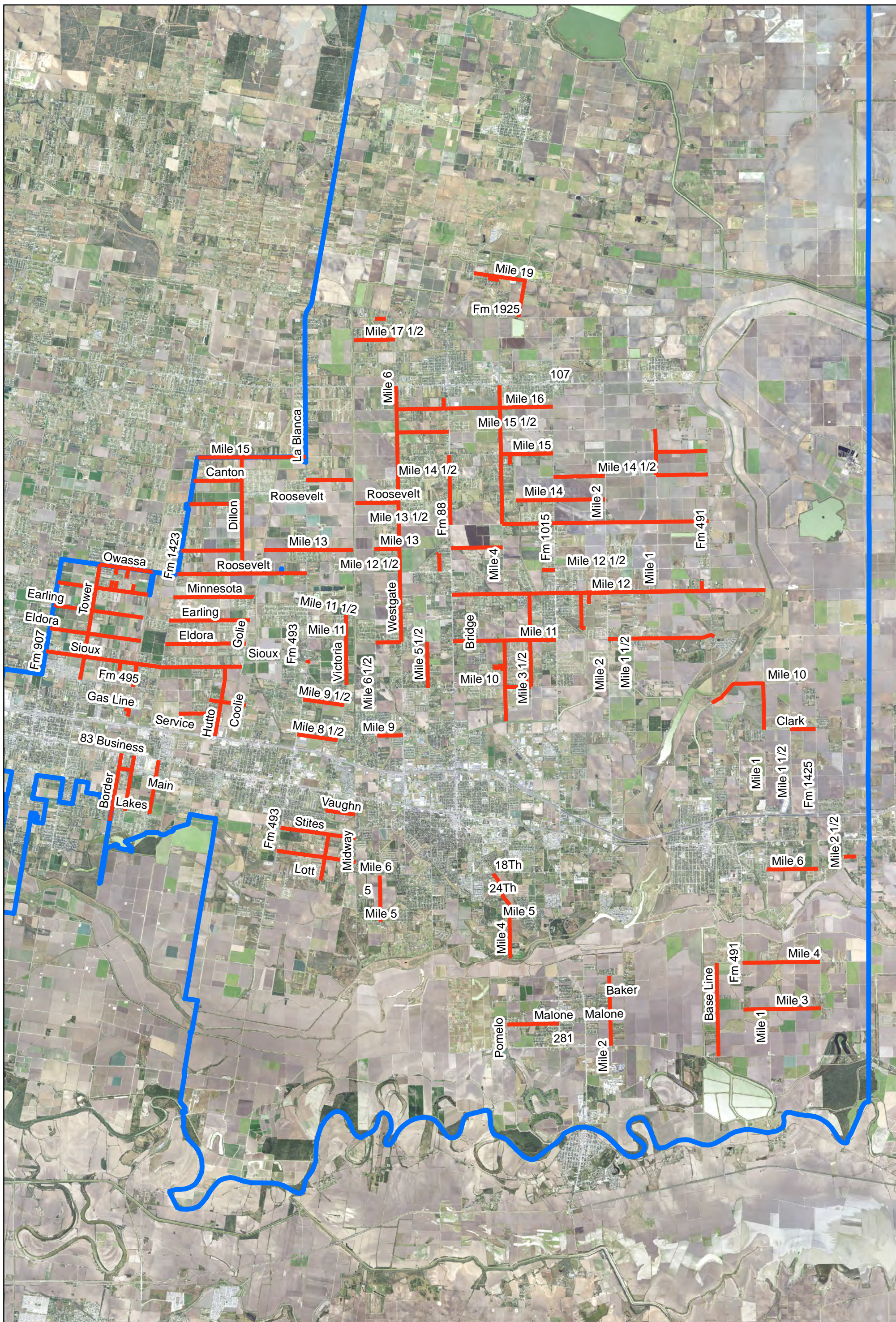
### **Road Infrastructure Damage Assessment**

1. Identify Damaged Infrastructure
  - Road Condition
  - Road Drainage Condition
2. Classify Rd Damges
3. Prioritize Damages
4. Reinstatement Recommendations

### **Assessment Report**

1. Compile Report and Recommendations to include
  - Improvement Recommendations
  - Maps
  - Cost Estimates

Precinct 1: 2020 Road Assessment  
Exhibit: B Map  
Aproximately 100 Miles



<b>Engineering Schedule Summary</b>	Duration	<b>2021</b>				
		January	Feburary	March	April	May
<b>Management / Coordination</b>	15 days	[Gantt chart showing 15 days of red bars starting in late February and ending in early March]				
<b>Damage Assement</b>	45 days	[Gantt chart showing 45 days of yellow bars starting in late February and ending in late April]				
<b>Assessment Report</b>	15 days	[Gantt chart showing 15 days of green bars starting in early April and ending in mid-April]				
		[Empty Gantt chart row]				
		[Empty Gantt chart row]				
		[Empty Gantt chart row]				
		[Empty Gantt chart row]				

**Total Days to Perform Project**                      **75**



**Exhibit D-1**

-Estimated Project Fee Schedule

<b>Task and Description</b>	<b>Principal</b>	<b>Project Manager</b>	<b>Senior Engineer</b>	<b>R.P.L.S</b>	<b>Senior Engineering Technician</b>	<b>CAD Technician</b>	<b>Survey Crew</b>	<b>Clerical</b>	<b>Total</b>
<b>Hourly Rate</b>	\$ 240.00	\$ 160.00	\$ 140.00	\$ 150.00	\$ 70.00	\$ 68.00	\$ 150.00	\$ 40.00	
<b>A. General Management / Coordination</b>									
	15	20	32	0	35	30		30	162
sub total	\$ 3,600.00	\$ 3,200.00	\$ 4,480.00	\$ -	\$ 2,450.00	\$ 2,040.00	\$ -	\$ 1,200.00	\$ 16,970.00
<b>B. Road Infrastructure Damage Assessment</b>									
	30	40	47		125	125	65	35	467
sub total	\$ 7,200.00	\$ 6,400.00	\$ 6,580.00	\$ -	\$ 8,750.00	\$ 8,500.00	\$ 9,750.00	\$ 1,400.00	\$ 48,580.00
<b>C. Assessment Report</b>									
	20	18	20		35	60		60	213
sub total	\$ 4,800.00	\$ 2,880.00	\$ 2,800.00	\$ -	\$ 2,450.00	\$ 4,080.00	\$ -	\$ 2,400.00	\$ 19,410.00
									0
	\$ -	\$ -	\$ -	\$ -	\$ -	\$ -	\$ -	\$ -	\$ -

<b>Total Professional Man Hour Estimate</b>	<b>65</b>	<b>78</b>	<b>99</b>	<b>0</b>	<b>195</b>	<b>215</b>	<b>65</b>	<b>125</b>	<b>842</b>
<b>Total Estimated Professional Services Fee</b>	<b>\$ 15,600.00</b>	<b>\$ 12,480.00</b>	<b>\$ 13,860.00</b>	<b>\$ -</b>	<b>\$ 13,650.00</b>	<b>\$ 14,620.00</b>	<b>\$ 9,750.00</b>	<b>\$ 5,000.00</b>	<b>\$ 84,960.00</b>