

PROJECT:
LMYPPF Hidalgo County Pct #2

JOB NO.:

SUBJECT:
Exterior/Interior Punch List

CLIENT:
Hidalgo County PCT #2

LOCATION:
1601 W. Anaya Rd. Pharr Tx

DATE:
Jan. 13, 2021

Punch List Report prepared by B2Z Engineering shall be deemed accurate as the record of matters discussed and conclusions reached. Corrections and/or objections to the items listed in this report shall be reported to David Rivera at B2Z Engineering within three (3) calendar days of distribution of this document.

Punch Lists ▶

RISER ROOM:

- ✓ 1. RUN ELECTRICAL POWER TO UNIT HEATER
- ✓ 1a. REPAIR DENTS AND PAINT DOOR FRAME

Priority: High Status: Open

Location: RISER ROOM



EXTERIOR:

✓ 2. Install Valves in valve boxes as per plans

Priority: High Status: Open

Location: Both Buildings domestic water risers



✓ 3. REGRADE AND COMPACT SOIL AT DOWNSPOUT

Priority: High Status: Open

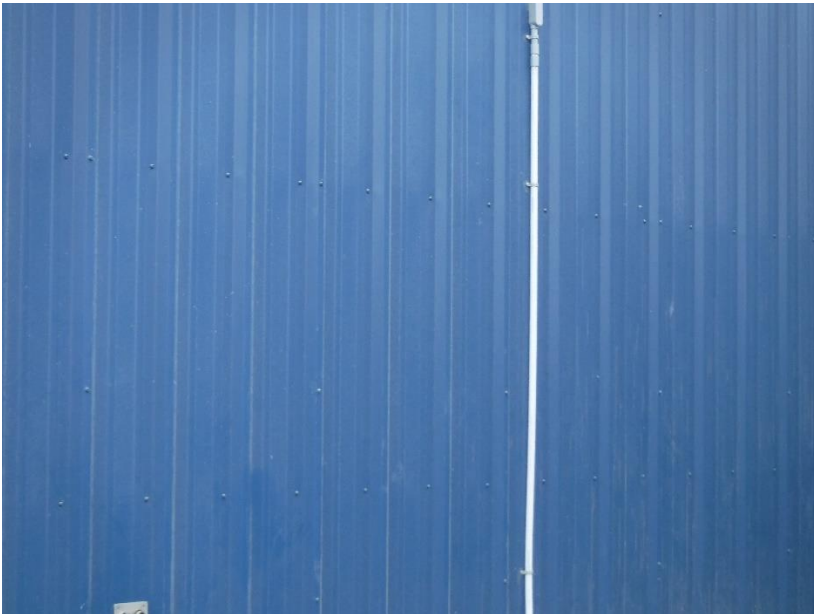
Location: EXTERIOR SOUTH SIDE OF GYM



✓ 4. PAINT FA CONDUIT TO MATCH BUILDING

Priority: High Status: Open

Room / Location: Exterior SOUTH WALL OF GYM



✓ 5. LEVEL AND CALK AROUND WALL HYDRANT NORTH WALL OF GYM

Priority: High Status: Open

Room / Location: Exterior



✓ 6. REMOVE AFTER LANDSCAPING GEO-TEX FABRIC FROM ALL INLETS

Priority: High Status: Open

Room / Location: EXTERIOR BLDG.



✓ 7. PLACE CONCRETE COLLAR AND PROPER C/O COVER ON SEWER CLEAN OUT

Priority: High Status: Open

Room / Location: Exterior of Building east side



✓ 8. COMPLETE ALL LANDSCAPING AND IRRIGATION

Priority: High Status: Open

Room / Location: EXTERIOR



✓ 9. PATCH CONCRETE HOLE @ PORCG COLUMN

Priority: High Status: Open

Room / Location: EXTERIOR FRONT PORCH



✓ 10. CAULK ALL WINDOWS AND FRAMES THRU-OUT BUILDINGS

Priority: High Status: Open

Room / Location: EXTERIOR



✓ 11. PAINT FIRE LINE AS PER PLANS

Priority: High Status: Open

Room / Location: PARKING LOT



✓ 12. INSTALL HANDICAP PARKING SIGNS

Priority: High Status: Open

Room / Location: PARKING LOT



✓ 13. INSTALL CONCRETE COLLARS @ C/O AND SAMPLE WELL AT GREASE TRAP AREA

Priority: High Status: Open

Room / Location: EXTERIOR OF BUILDING



✓ 14. HAUL OFF ALL SPOILS FROM DETENTION POND

Priority: High Status: Open

Room / Location: EXTERIOR OF BUILDING



✓ 15. PAINT ALL ADA RAMP

Priority: High Status: Open

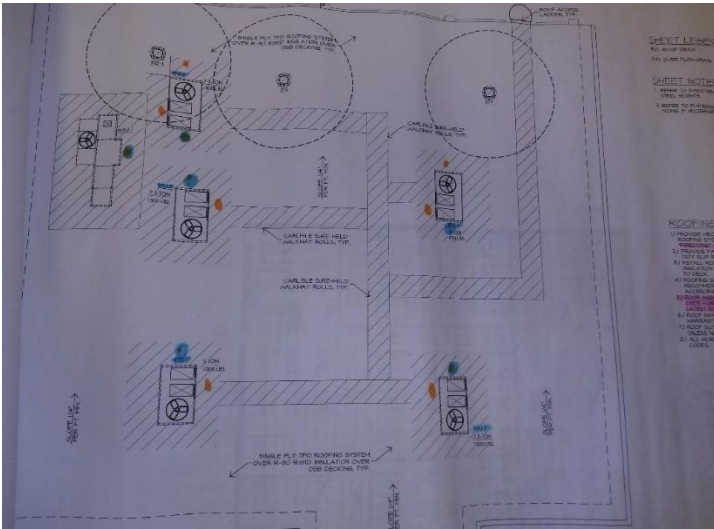
Room / Location: EXTERIOR SIDEWALKS



✓ 16. INSTALL WALK PADS FROM ONR UNIT TO ANOTHER PER ROOF PLAN

Priority: High Status: Open

Room / Location: EXTERIOR (Throughout Building)



✓ 17. INSTALL TRENCH COVER TO SDEWALK

Priority: High Status: Open

Room / Location: EXTERIOR SIDEWALK



✓ 18. PICK UP CONCRETE CLUMPS THRU-OUT SITE

Priority: High Status: Open

Room / Location: EXTERIOR (Throughout Site)



✓ 19. PAINT GREEN STRIPE @ CORNER, DOES NOT MATCH UP

Priority: High Status: Open

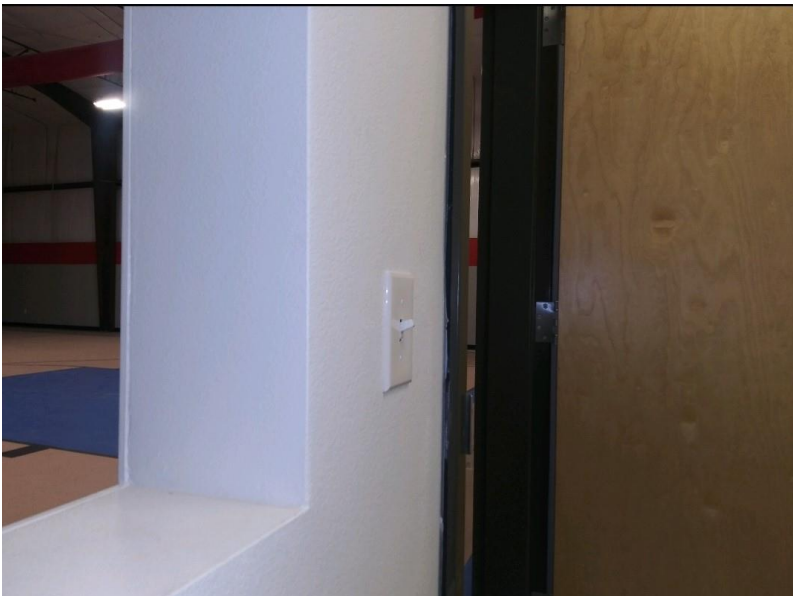
Room / Location: RM105



✓ 20. RM101 Gym - Caulk wide gap between the wall and door frame

Priority: High Status: Open

Room / Location: EXTERIOR



✓ 21. Pull plastic cap and caulk all sidewalk expansion joints.

Priority: High Status: Open

Room / Location; EXTRIOR THRU-OUT



✓ 22. Complete installation of storm drain line and patch asphalt rd.

Priority: High Status: Open

Room / Location: Exterior



✓ 23. Ensure that all TRUBRO kits are secured properly.

Priority: High Status: Open

Room / Location: EXTERIOR



✓ 24. Replace broken glass at south east corner.

Priority: High Status: Open

Room / Location: EXTERIOR



✓ 25. Ensure that all TRUBRO kits are secured properly.

Priority: High Status: Open

Room / Location: EXTERIOR



✓ 26. Replace T-stat cover.

Priority: High Status: Open

Room / Location: EXTERIOR



✓ 27. Cover Dado Joints at receptionist counter.

Priority: High Status: Open

Room / Location: interior



✓ 28. Install Stainless Steel back splash, mop hanger and spout hose.

Priority: High Status: Open

Room / Location: interior



✓ 29. Caulk back of mop sink/ Install Stainless Steel back splash, mop hanger/ spout hose.

Priority: High Status: Open

Room / Location: interior

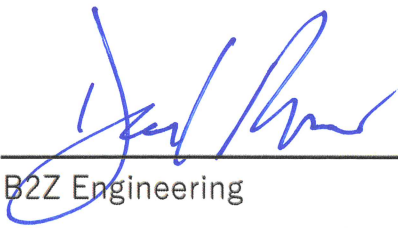




31. General Notes:

- Caulk all Thresholds at ALL Exterior Doors
- Many ceiling tiles throughout the bldg. are not setting down properly on the grid there is a small gap. Check all rooms and adjust all, as necessary.
- Replace all ceiling tiles with scratches and or small chunks missing from the edges throughout the bldg.
- Touch Up Texture & Paint on wall at all rooms as needed.
- Check all VCT flooring for any gaps and or loose tiles.
- Check all light fixtures to insure they are resting properly on the ceiling grid.
- Complete TAB at teen center
- At exterior install pull box @ east side communication conduits
- All doors closers on exterior and interior doors should be checked for proper closing and latching.
- RM105 – Adjust water fountain.
- Run power to irrigation controller.
- Adjust ceiling grid at hallway (teen center)
- Remove glue from counter tops thru-out.
- Caulk at all toilet bases and lean all floor drain covers thru-out.
- Install escutcheons at all trap primer lines thru-out.
- Ensure that all vinyl base is adhered to wall thru-out.
- RM118 – Adjust toilet flush valve.
- RM119 – Toilet flush valve leaking.
- All VCT flooring needs to be cleaned and waxed.
- Check all toilet partitions for firmness.
- RR107 – caulk around urinals
- Insulate fire line under canopy between buildings.
- Install cushions at steel columns at gym.
- Gym interior girl RR- adjust toilet water flow @ flush valve.
- RM103 – Check on pipe sticking out from wall.
- RM105 – Missing TPD/TR
- RM103 – Check water heater for operation and insulate all lines as per plan.
- RM105 – Fill in Jambs at entry to RR (Interior)
- RM102 – Clean wall and touch up paint at gym office.
- Clean paint off floor at gym, kitchen, office
- Ensure that all PTD and trash receptacles.
- Repair any damaged insulation @ mezzanine.

Completion Approval



B2Z Engineering



Erickson Construction

Hidalgo County – Precinct #2

3/19/2021

Date

3/17/21

Date

Date