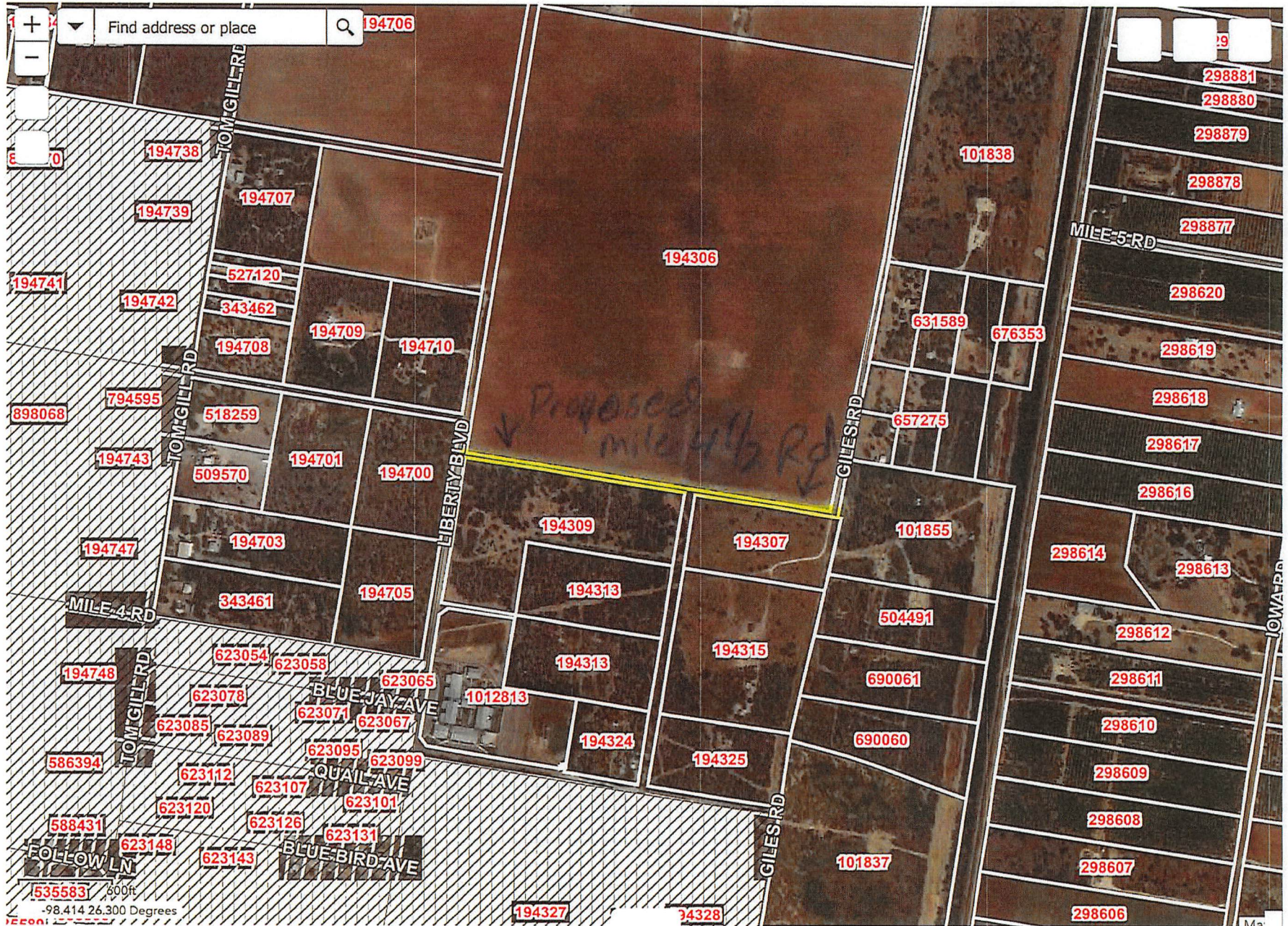


Hidalgo County Basemap



All rights reserved



Plat and subdivision of 1297 1/2 acres of land of Porcion number seventyseven into 5 acre blocks

Known as Subdivision A

Blocks number 1 to 235 inclusive are 168 vares square and contain 5 acres each

Blocks number 236 to 240 inclusive are 168 vares by 210 vares and contain 6 1/2 acres each

roads for public use.

I, J. W. Adams, Justice for Howell Association of Hildes County & hereby certify that the above and foregoing is true and correct copy of the subdivision of 1297 1/2 acres of Porcion number seventy seven of Hildes County, N. C. and the blocks therein are based upon same to be bounded and plat as shown. The road shown on attached is the one of the public use the map should be kept & comply therewith and every stake or other for any purpose in relation thereto is the greater for same or copy.

Filed for record under No. 194 day of

January, A.D. 1906, at 9:30 O'Clock A. M.

J. W. Adams
Notary Public for N. C.

Remains and undivided before me this 25th day of January A. D. 1906

J. W. Adams
Notary Public for N. C.

I, Sheriff Wm. S. Sledge of Hildes County, N. C., do hereby certify that the above and foregoing is true and correct copy of the Howell Association known as Subdivision A of said land.

Wm. S. Sledge
Hildes County, N. C.

Recorded February 19th 1906 at
20 O'Clock P. M. in Apt "O" Real Estate
records page 208 to 209.

AS AD... + 11.1

Scale one inch = 200 vares.

↗
N

Liberty Blvd

Proposed
Mile 4 1/2 Road



55	46	45	36	35	26
54	47	44	37	34	27
53	48	43	38	33	28
52	49	42	39	32	29
51	50	41	40	31	30

Giles Road

Proposed
mile 4 1/2
Road

Liberty Blvd

Giles Road

1	2	3	4	5	6	7	8	9	10	11	12	13	14	15	16	17	18	19	20	21	22	23	24	25	26	27	28	29	30	31	32	33	34	35	36	37	38	39	40	41	42	43	44	45	46	47	48	49	50	51	52	53	54	55	56	57	58	59	60	61	62	63	64	65	66	67	68	69	70	71	72	73	74	75	76	77	78	79	80	81	82	83	84	85	86	87	88	89	90	91	92	93	94	95	96	97	98	99	100
1	2	3	4	5	6	7	8	9	10	11	12	13	14	15	16	17	18	19	20	21	22	23	24	25	26	27	28	29	30	31	32	33	34	35	36	37	38	39	40	41	42	43	44	45	46	47	48	49	50	51	52	53	54	55	56	57	58	59	60	61	62	63	64	65	66	67	68	69	70	71	72	73	74	75	76	77	78	79	80	81	82	83	84	85	86	87	88	89	90	91	92	93	94	95	96	97	98	99	100

N