

# SAM Engineering and Surveying



---

Engineering Firm Reg # 10602      Surveying Firm Reg # 101416-00  
200 S. 10<sup>th</sup> Street, Suite 1500, McAllen, Texas 78501    Phone: (956) 702-8880    Fax: (956) 702-8883

November 11, 2021

John Paul Lugo  
Program Manager II  
505 S. McColl Rd., 2<sup>nd</sup> Floor  
Edinburg, Texas 78539

Re:      Professional Engineering Services- Contract C-21-0435-09-21  
            Work Authorization No. 1 – Roadway & Bridge Inventory Assessment Study and Report(s)

Dear Mr. Lugo,

Attached for your review and approval is our request for Payment No. 2 for services rendered under Work Authorization No. 1, executed September 21, 2021. Services rendered are for work completed October 1, 2021, through October 31, 2021, on the above referenced project.

The following is a narrative of the progress for this period:

## **TASK DESCRIPTIONS**

<b>Phase 1: Preparatory</b>	<b>60.32%</b>
-----------------------------	---------------

### Preparatory Task 1-10

- Review County provided criteria, previous database, existing basemaps, and any other pertinent project documents.
- Prepare Project Management Plan for services during project duration.
- Prepare/Coordinate & Conduct Project Coordination meetings with Hidalgo County Officials
- Prepare preliminary list of “new” roadways or developments in the County since previous GASB Report
- Develop a database containing all assessment parameters
- Develop a georeferenced mapping system to contain and display all the defects and their severity
- Evaluate software/systems to provide the condition ratings for each roadway

**Project Management Task 1-10****8.33%**

- Prepare and submit Monthly invoicing to County
- Coordinate Project Segment Kickoff Meetings with each Precinct to establish the Precinct's priorities and identify primary points of contact.
- Coordinate with Hidalgo County Officials to obtain county road historical data (construction date, maintenance, etc.)
- Conduct Internal Meetings with all team members to ensure adherence to scope, schedule, and budget
- Conduct Monthly meetings with each Precinct to review project progress, scope of work and adherence to schedule
- Coordinate & attend field visits with Hidalgo County Officials throughout the duration of the project.
- Process RFI's and coordinate with Hidalgo County Officials as needed to request clarifications of street limits, conflicts in name, lack of access, etc.
- Conduct "Hold Points" (new task/scope of work) meetings and "Hands Down" (incident review) meetings as needed
- Quality Control reviews of data processing
- QA/QC of Database, PCI, GIS Files, GASB Report

**Phase 2: Roadway Inventory****2.06%****Data Collection**

- Perform on-site assessment identifying all roadway elements such as Apparent ROW, Pavement Type and Width, Street Length, Sidewalks, and Striping.
- Collect georeferenced photographic evidence of all street signage including Speed Limits, Traffic Signs, Regulatory Signs, Warning Signs, Construction & Maintenance Signs, Service Signs, and Guide Signs
- Assess the efficacy of Roadway Drainage
- Provide a Condition Rating of all defects identified within County Roads
- Daily quality control of field activities to ensure proper categorization
- Capture and compile photographic evidence roadway conditions

**Update Database(s)****2.05%**

- Populate and maintain the database containing all assessment parameters and Condition Rating Score.
- Provide an estimate for roadway improvements required and capitalize all existing roadways.
- Develop proposed improvement schedule/categories
- Populate and maintain the georeferenced mapping system to contain and display all the defects and their severity
- Develop and maintain a PCI based on field parameters.

# SAM Engineering and Surveying



Engineering Firm Reg # 10602      Surveying Firm Reg # 101416-00  
200 S. 10<sup>th</sup> Street, Suite 1500, McAllen, Texas 78501 Phone: (956) 702-8880 Fax: (956) 702-8883

**Phase 3: GASB Report** **00.00%**

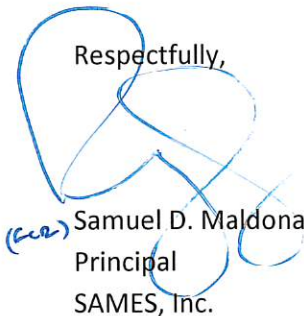
## GASB Report

- Prepare and present exhibits to county officials to include Database Reports, GIS Files, Management Plan, etc.
- Calculate historical value, prepare existing value and replacement, repair, and maintenance costs of county roads based on information collected.
- Identify optimal replacement and repair costs
- Prepare final GASB-34 report to present to Hidalgo County Officials

**Direct Expenses** **8.33%**

For your review and consideration attached is our Request for Payment No. 2.  
Should you have any questions regarding this submittal please do not hesitate to call me at 956-702-8880.

Respectfully,

A handwritten signature in blue ink, appearing to read "Samuel D. Maldonado", is written over the typed name and title.

Samuel D. Maldonado, P.E., R.P.L.S  
Principal  
SAMES, Inc.

**Hidalgo County Precinct No. 1**

**PROFESSIONAL SERVICES –  
INSPECTION, MATERIAL TESTING AND CONSTRUCTION MANAGEMENT**

REQUEST FOR PAYMENT NO: 2 (October, 2021)  
BILLING PERIOD: October 1, 2021 through October 31, 2021

CITY/COUNTY: Hidalgo County  
PROJECT NAME: Roadway & Bridge Inventory Assessment Study & Report(s)  
Work Authorization No. 1  
ENG./ARCH. FIRM: SAMES, Inc. (SAM Engineering and Surveying)  
ADDRESS: 200 S 10<sup>TH</sup> ST, SUITE 1500  
CITY/STATE: McAllen, Texas ZIP: 78501

Contract Amt. \$ 1,660,128.92

Contract #: C-21-0435-09-21

Purchase Order#: 838888

SCOPE OF SERVICES	ESTIMATED AMOUNT	% COMPLETED TO DATE	TOTAL DUE	LESS PREVIOUS PAYMENTS	AMOUNT DUE THIS REQUEST
<b>Phase 1: Preparatory</b>	\$180,706.00	60.32%	\$109,000.00	\$33,610.00	\$75,390.00
Task 1-7. Preparatory.					
Task 1-10. Project Management.	\$245,226.00	8.33%	\$20,435.50	\$0.00	\$20,435.50
<b>Phase 2: Roadway Inventory</b>	\$975,984.00	2.06%	\$20,150.00	\$0.00	\$20,150.00
Task 1-6. Data Collection.					
Task 1-5. Update Database(s).	\$173,572.00	2.05%	\$3,550.00	\$0.00	\$3,550.00
<b>Phase 3: GASB Report</b>	\$68,204.00	0.00%	\$0.00	\$0.00	\$0.00
Task 1-4. GASB Report.					
<b>Direct Expenses</b>	\$16,436.92	8.33%	\$1,369.74	\$0.00	\$1,369.74
<b>TOTAL</b>	<b>\$1,660,128.92</b>	<b>9.31%</b>	<b>\$154,505.24</b>	<b>\$33,610.00</b>	<b>\$120,895.24</b>

**Work Authorization Summary**

<u>WA No. 1</u>	<u>WA Amount</u>	<u>Previously Invoiced</u>	<u>Percentage Complete</u>	<u>Remaining Balance</u>
	\$1,660,128.92	\$33,610.00	9.31%	\$1,505,623.68

\* - Please attach supporting documents to this request.

I certify that the above is true and correct to the best of my knowledge.

*SDR* Samuel D. Maldonado, P.E., R.P.L.S.  
Principal  
SAMES, Inc.

11/11/21  
Date



# Memo

**To:** John Paul Lugo  
**From:** *PL (for)* Samuel D. Maldonado, P.E., R.P.L.S.  
**Date:** November 11, 2021  
**Re:** Hidalgo County Street Inventory Invoice #2

---

Please see below for the list of items accomplished from October 1, 2021, to October 31, 2021, on the Hidalgo County Street Inventory Project. Should you have any questions, please do not hesitate to reach out to me.

1. SAMES, Inc. met with Hidalgo County Planning Department on October 12, 2021.
2. Obtained Hidalgo County's Planning Department GASB map.
3. Obtained Hidalgo County's 2020/2021 All New Subdivisions – January to December from Commissioners Court.
4. SAMES, Inc. held kick-off meeting with Precinct 1 on October 21, 2021.
5. Obtained Precinct 1 shapefiles, georeferenced, and historical data pertinent to previous road inventories, maintenance, and reconstruction projects.
6. Performed on-site inspection identifying all road elements on inspected county roads on Precinct 1 (See Exhibit A).
7. Performed on-site inspection of New Subdivisions whose warranties will be expiring:
  - I. Commercial Lot DLG Acres Subdivision.
  - II. Citrus Village Subdivision No.2:
    - a. Meadow Orchard Dr
    - b. Legacy Ln
  - III. Eduardos Subdivision No. 18:

- a. University Ave.
- b. 109<sup>th</sup> St.
- c. Xavier Ave.
- d. 110<sup>th</sup> St.

IV. San Lucio No. 4 Subdivision:

- a. Cavargna Dr.
- b. Lugano Ln.
- c. Bogno Dr.

V. Caledonia Estates Phase III Subdivision:

- a. Paola St.
- b. Sylvia St.
- c. Camila St.
- d. Cowboy Dr.
- e. Sherman St.
- f. Dishman St.

8. Collected georeferenced photographic evidence of street signage on inspected county roads on Precinct 1 (See Exhibit A).
9. Collected the roadway drainage elements on inspected county roads on Precinct 1 (See Exhibit A).
10. Performed a condition rating of road defects on inspected county roads on Precinct 1 (See Exhibit A).
11. Captured and compiled photographic evidence of roadway conditions on inspected county roads on Precinct 1 (See Exhibit A).
12. Populate and maintain the database (list of roads) (See Exhibit B).
13. Total mileage inspected on Precinct 1: 35.6 miles (See Exhibit A).

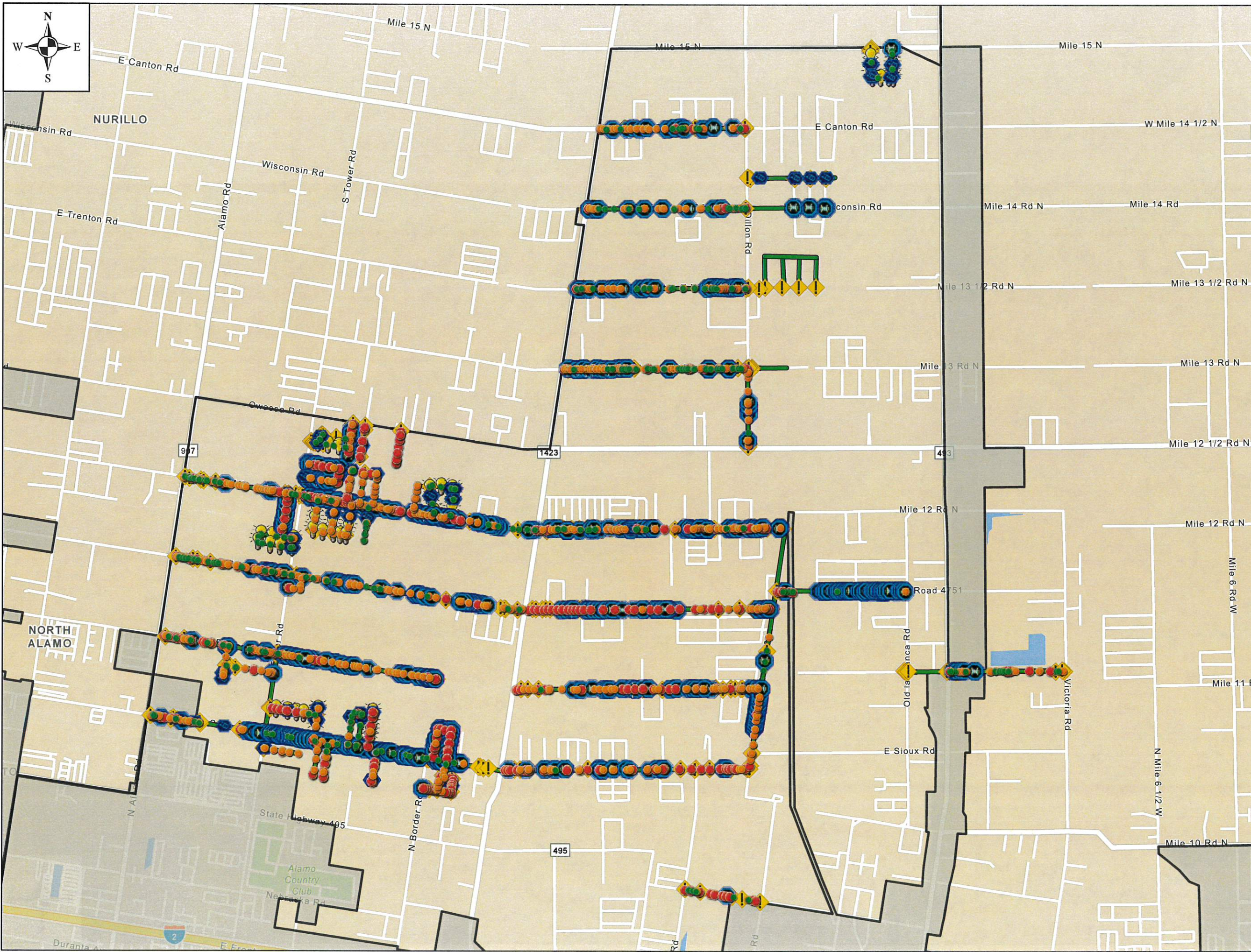
## Exhibit B - List of roads inspected - October 2021

Street Name	Pct	Road ID	City	Starting Point	End Point
W Eldora Rd	1	271	Alamo	<a href="#">26.219198 -98.129399</a>	<a href="#">217583 -98.117797</a>
W Sioux Rd	1	220	Alamo	<a href="#">26.211965 -98.130373</a>	<a href="#">210615 -98.120345</a>
Sioux Rd	1	64	Alamo	<a href="#">26.210371 -98.118211</a>	<a href="#">208835 -98.106849</a>
El Dora Rd	1	271	Alamo	<a href="#">26.217523 -98.116850</a>	<a href="#">216423 -98.106366</a>
E Nolana Loop	1	216	Alamo	<a href="#">26.224632 -98.115326</a>	<a href="#">223223 -98.105422</a>
E Minnesota Rd	1	238	Alamo	<a href="#">26.231815 -98.114410</a>	<a href="#">230263 -98.103433</a>
E Minnesota Rd	1	238	Alamo	<a href="#">26.223047 -98.103695</a>	<a href="#">228020 -98.086908</a>
E. Nolana Loop	1	216	Alamo	<a href="#">26.223095 -98.103892</a>	<a href="#">220909 -98.088278</a>
E. El Dora Rd	1	271	Alamo	<a href="#">26.215920 -98.105079</a>	<a href="#">213646 -98.089196</a>
W Canton Rd	1	2295	Donna	<a href="#">26.263579 -98.072802</a>	<a href="#">263627 -98.057712</a>
W Wisconsin Rd	1	464	Donna	<a href="#">26.256372 -98.073540</a>	<a href="#">256368 -98.058994</a>
W Trenton Rd	1	1671	Donna	<a href="#">26.248993 -98.075003</a>	<a href="#">249110 -98.057720</a>
Minnesota Rd	1	501	Donna	<a href="#">26.227225 -98.078772</a>	<a href="#">227337 -98.054054</a>
W Alberta Rd	1	2294	Donna	<a href="#">26.241802 -98.075895</a>	<a href="#">241860 -98.057522</a>
Dillon Rd	1	1670	Donna	<a href="#">26.235209 -98.057373</a>	<a href="#">241914 -98.057292</a>
E Nolana Loop	1	464	Donna	<a href="#">26.220027 -98.079919</a>	<a href="#">220053 -98.055848</a>
Minnesota Rd	1	501	Donna	<a href="#">26.227170 -98.080316</a>	<a href="#">227952 -98.085852</a>
Eldora Rd	1	384	Donna	<a href="#">26.212721 -98.080920</a>	<a href="#">212829 -98.056251</a>
Nolana Rd	1	None	Donna	<a href="#">26.219953 -98.080642</a>	<a href="#">220294 -98.084196</a>
W Sioux Rd	1	313	Donna	<a href="#">26.205406 -98.081750</a>	<a href="#">205549 -98.057723</a>
E Sioux Rd	1	221	Alamo	<a href="#">26.208647 -98.105511</a>	<a href="#">205554 -98.083702</a>
Goolie Rd	1	3895	Donna	<a href="#">26.206009 -98.057312</a>	<a href="#">212659 -98.056180</a>
Blue Jay St	1	262	Alamo	<a href="#">26.235839 -98.100982</a>	<a href="#">235258 -98.098032</a>
Jay Dr	1	262	Alamo	<a href="#">26.235155 -98.101201</a>	<a href="#">235853 -98.100891</a>
El Jay Dr	1	62	Alamo	<a href="#">26.235166 -98.102178</a>	<a href="#">234532 -98.098157</a>
Teresa Barrerra St	1	101	Alamo	<a href="#">26.235166 -98.102178</a>	<a href="#">235845 -98.097940</a>
Sitio Cir	1	69	Alamo	<a href="#">26.236606 -98.096498</a>	<a href="#">233754 -98.097012</a>
Azure St	1	168	Alamo	<a href="#">26.236143 -98.092843</a>	<a href="#">233159 -98.093339</a>
Rio Grande Cir	1	254	Alamo	<a href="#">26.231904 -98.102581</a>	<a href="#">231821 -98.102435</a>
Mar Cir	1	259	Alamo	<a href="#">26.226312 -98.103866</a>	<a href="#">225487 -98.103952</a>
Amigo St	1	211	Alamo	<a href="#">26.230125 -98.104452</a>	<a href="#">230094 -98.104457</a>
Presidio Cir	1	None	Alamo	<a href="#">26.229813 -98.101463</a>	<a href="#">229431 -98.097860</a>
Cortez Dr	1	None	Alamo	<a href="#">26.229638 -98.099503</a>	<a href="#">227107 -98.100004</a>
Cortez Dr	1	59	Alamo	<a href="#">26.229756 -98.098431</a>	<a href="#">232528 -98.097626</a>
Cortez Dr	1	59	Alamo	<a href="#">26.229756 -98.098431</a>	<a href="#">232528 -98.097626</a>
Marina Dr	1	57	Alamo	<a href="#">26.229639 -98.097096</a>	<a href="#">232413 -98.096423</a>
Montezuma Dr	1	23	Alamo	<a href="#">26.229618 -98.095801</a>	<a href="#">232046 -98.095248</a>
Tolteca Dr	1	196	Alamo	<a href="#">26.232551 -98.097616</a>	<a href="#">232241 -98.095426</a>
Montezuma Dr	1	4957	Alamo	<a href="#">26.229216 -98.096113</a>	<a href="#">226071 -98.096668</a>
Aztec Dr	1	135	Alamo	<a href="#">26.228823 -98.091615</a>	<a href="#">231176 -98.091162</a>
Santa Catarina St	1	5053	Alamo	<a href="#">26.228823 -98.091615</a>	<a href="#">231176 -98.091162</a>
General Escobedo S	1	5051	Alamo	<a href="#">26.231175 -98.089730</a>	<a href="#">230904 -98.087609</a>
Sabias Hidalgo St	1	5052	Alamo	<a href="#">26.230918 -98.087585</a>	<a href="#">228319 -98.087782</a>
Sabias Hidalgo St	1	5052	Alamo	<a href="#">26.230918 -98.087585</a>	<a href="#">228319 -98.087782</a>

Maribels Rd	1	258	Alamo	<a href="#">26.222973 -98.103109</a> ; <a href="#">221915 -98.104496</a>
Ruby Sr	1	None	Alamo	<a href="#">26.222973 -98.103109</a> ; <a href="#">218120 -98.108065</a>
Cielo Lindo Rd	1	4787	Alamo	<a href="#">26.216350 -98.110456</a> ; <a href="#">213599 -98.111004</a>
Ray Dr	1	4788	Alamo	<a href="#">26.214204 -98.106081</a> ; <a href="#">214858 -98.110648</a>
Ray Dr	1	255	Alamo	<a href="#">26.214204 -98.106081</a> ; <a href="#">214858 -98.110648</a>
Cherokee Ln	1	169	Alamo	<a href="#">26.211061 -98.106169</a> ; <a href="#">210361 -98.101440</a>
Cherokee Ln	1	4765	Alamo	<a href="#">26.211061 -98.106169</a> ; <a href="#">210361 -98.101440</a>
Broken Arrow Dr	1	4764	Alamo	<a href="#">26.208136 -98.101759</a> ; <a href="#">210982 -98.101225</a>
Lucas Ct	1	260	Alamo	<a href="#">26.207396 -98.106858</a> ; <a href="#">206859 -98.103269</a>
Broken Arrow Dr	1	56	Alamo	<a href="#">26.207898 -98.101260</a> ; <a href="#">204986 -98.101725</a>
Virginal Dr	1	304	Alamo	<a href="#">26.207583 -98.100269</a> ; <a href="#">204793 -98.100693</a>
Apache Trail	1	60	Alamo	<a href="#">26.207510 -98.097384</a> ; <a href="#">210565 -98.097751</a>
Shawnee Trl	1	60	Alamo	<a href="#">26.210629 -98.097674</a> ; <a href="#">210517 -98.096856</a>
Mohawk Trail	1	55	Alamo	<a href="#">26.210528 -98.096958</a> ; <a href="#">207863 -98.097289</a>
Moulin Ave	1	306	Alamo	<a href="#">26.207378 -98.096321</a> ; <a href="#">210679 -98.095640</a>
Mariposa Dr	1	40003	Alamo	<a href="#">26.206745 -98.095331</a> ; <a href="#">204284 -98.095851</a>
Pueblo Rd	1	7	Alamo	<a href="#">26.206298 -98.088194</a> ; <a href="#">209011 -98.089029</a>
Hoppi Rd	1	195	Alamo	<a href="#">26.209179 -98.089034</a> ; <a href="#">209027 -98.087957</a>
Navajo Rd	1	54	Alamo	<a href="#">26.206370 -98.088303</a> ; <a href="#">209022 -98.087858</a>
Yucatan Rd	1	3761	Alamo	<a href="#">26.204428 -98.088986</a> ; <a href="#">204631 -98.087615</a>
Tabasco St	1	3763	Alamo	<a href="#">26.204628 -98.087613</a> ; <a href="#">203484 -98.087719</a>
Maize Rd	1	3764	Alamo	<a href="#">26.203471 -98.087726</a> ; <a href="#">203631 -98.090344</a>
Templo Rd	1	3762	Alamo	<a href="#">26.203643 -98.089611</a> ; <a href="#">204760 -98.088933</a>
Navajo Rd	1	3760	Alamo	<a href="#">26.206071 -98.088218</a> ; <a href="#">204738 -98.088860</a>
Navajo Rd	1	3760	Alamo	<a href="#">26.206071 -98.088218</a> ; <a href="#">204738 -98.088860</a>
Mile 9	1	312	Donna	<a href="#">26.194681 -98.063879</a> ; <a href="#">193102 -98.057123</a>
Mile 11 North	1	826	Donna	<a href="#">26.214290 -98.036974</a> ; <a href="#">214495 -98.025304</a>
Mile 11 N	1	825	Donna	<a href="#">26.214299 -98.041101</a> ; <a href="#">214473 -98.036964</a>
Mile 11 N	1	825	Donna	<a href="#">26.214381 -98.041350</a> ; <a href="#">214380 -98.041106</a>
E Hernandez Rd	1	385	Donna	<a href="#">26.221613 -98.054591</a> ; <a href="#">221603 -98.041299</a>
Alberta Rd	1	2294	Donna	<a href="#">26.241739 -98.076373</a> ; <a href="#">241858 -98.057427</a>
Alberta Rd	1	2544	Donna	<a href="#">26.241860 -98.057373</a> ; <a href="#">132839 -95.785580</a>
E Trenton Road	1	5200	Donna	<a href="#">26.249110 -98.057442</a> ; <a href="#">250024 -98.050057</a>
Aurora Valley Drive	1	4857	Donna	<a href="#">26.259097 -98.057500</a> ; <a href="#">259150 -98.048346</a>
Wisconsin	1	2565	Donna	<a href="#">26.256372 -98.057480</a> ; <a href="#">256397 -98.052678</a>
E Wisconsin	1	5067	Donna	<a href="#">26.256397 -98.053463</a> ; <a href="#">256411 -98.048794</a>
Paola	4	5153	Edinburg	<a href="#">26.289726 -98.123762</a> ; <a href="#">291277 -98.123465</a>
Sylvia	4	5151	Edinburg	<a href="#">26.290048 -98.122831</a> ; <a href="#">291120 -98.12256</a>
Camila	4	4898	Edinburg	<a href="#">26.289888 -98.121945</a> ; <a href="#">291104 -98.121716</a>
Cowboy Dr	4	4899	Edinburg	<a href="#">26.289763 -98.121041</a> ; <a href="#">290963 -98.120825</a>
Sherman	4	5150	Edinburg	<a href="#">26.291369 -98.123513</a> ; <a href="#">290895 -98.120042</a>
Dishman	4	4188	Edinburg	<a href="#">26.290061 -98.123514</a> ; <a href="#">289706 -98.120993</a>
Cavargna Drive	1	5216	Donna	<a href="#">26.270926 -98.044879</a> ; <a href="#">268244 -98.044785</a>
Lugano Lane	1	5217	Donna	<a href="#">26.268236 -98.044743</a> ; <a href="#">268263 -98.042741</a>
Bogno Dr	1	5218	Donna	<a href="#">26.268208 -98.042577</a> ; <a href="#">270901 -98.042619</a>
Meadow Orchard Dr	4	5163	Edinburg	<a href="#">26.367033 -98.099403</a> ; <a href="#">363493 -98.100055</a>
Legacy Lane	4	5164	Edinburg	<a href="#">26.365300 -98.099253</a> ; <a href="#">365413 -98.100138</a>

University avenue	3	5166	Mission	<a href="#">26.306593</a> - <a href="#">98.318622</a> } <a href="#">.307066</a> - <a href="#">98.320646</a>
109th street	3	5167	Mission	<a href="#">26.306844</a> - <a href="#">98.319171</a> } <a href="#">.309316</a> - <a href="#">98.318733</a>
Xavier avenue	3	5168	Mission	<a href="#">26.309288</a> - <a href="#">98.318928</a> } <a href="#">.309467</a> - <a href="#">98.320177</a>
110th street	3	5169	Mission	<a href="#">26.309282</a> - <a href="#">98.319784</a> } <a href="#">.306937</a> - <a href="#">98.320165</a>
Sally Dr	1	4962	Donna	<a href="#">26.263510</a> - <a href="#">98.071236</a> } <a href="#">.260858</a> - <a href="#">98.071214</a>
Tommy Dr	1	4963	Donna	<a href="#">26.260846</a> - <a href="#">98.071168</a> } <a href="#">.260837</a> - <a href="#">98.068382</a>
Lisa Dr	1	4964	Donna	<a href="#">26.263531</a> - <a href="#">98.069800</a> } <a href="#">.260844</a> - <a href="#">98.069777</a>
Noe Dr	1	4965	Donna	<a href="#">26.263544</a> - <a href="#">98.068361</a> } <a href="#">.260903</a> - <a href="#">98.068345</a>
Bob Dr	1	5015	Donna	<a href="#">26.263593</a> - <a href="#">98.069018</a> } <a href="#">.266049</a> - <a href="#">98.069028</a>
Billy Dr	1	5016	Donna	<a href="#">26.266059</a> - <a href="#">98.069014</a> } <a href="#">.266071</a> - <a href="#">98.067827</a>
Brian Dr	1	5014	Donna	<a href="#">26.263592</a> - <a href="#">98.067760</a> } <a href="#">.266036</a> - <a href="#">98.067797</a>
Emeri In	1	5059	Donna	<a href="#">26.263668</a> - <a href="#">98.064227</a> } <a href="#">.266253</a> - <a href="#">98.064217</a>
Buddy Ln	1	5060	Donna	<a href="#">26.265134</a> - <a href="#">98.064352</a> } <a href="#">.265098</a> - <a href="#">98.065254</a>
Billy Dr	1	5013	Donna	<a href="#">26.266218</a> - <a href="#">98.065568</a> } <a href="#">.266249</a> - <a href="#">98.059637</a>
Billy Dr	1	5058	Donna	<a href="#">26.266218</a> - <a href="#">98.065568</a> } <a href="#">.266249</a> - <a href="#">98.059637</a>
Billy Dr	1	5126	Donna	<a href="#">26.266218</a> - <a href="#">98.065568</a> } <a href="#">.266249</a> - <a href="#">98.059637</a>
Koch Rd	1	5012	Donna	<a href="#">26.263589</a> - <a href="#">98.062720</a> } <a href="#">.266235</a> - <a href="#">98.062745</a>
Saucer Dr	1	5011	Donna	<a href="#">26.263598</a> - <a href="#">98.060943</a> } <a href="#">.266293</a> - <a href="#">98.060960</a>
Encanto St	1	5125	Donna	<a href="#">26.263652</a> - <a href="#">98.058967</a> } <a href="#">.266214</a> - <a href="#">98.059046</a>
Luz Divina Dr	1	None	Donna	<a href="#">26.263684</a> - <a href="#">98.055713</a> } <a href="#">.264186</a> - <a href="#">98.055721</a>
Luz Divina Dr	1	4696	Donna	<a href="#">26.264196</a> - <a href="#">98.055709</a> } <a href="#">.266536</a> - <a href="#">98.055740</a>
Luz Divina Dr	1	4760	Donna	<a href="#">26.263625</a> - <a href="#">98.055711</a> } <a href="#">.260444</a> - <a href="#">98.055697</a>
Hermosa Vida Dr	1	4698	Donna	<a href="#">26.263647</a> - <a href="#">98.053903</a> } <a href="#">.266679</a> - <a href="#">98.053920</a>
Hermosa Vida Dr	1	4761	Donna	<a href="#">26.263622</a> - <a href="#">98.053892</a> } <a href="#">.260434</a> - <a href="#">98.053873</a>
Bella Vista Dr	1	4762	Donna	<a href="#">26.266650</a> - <a href="#">98.052107</a> } <a href="#">.260234</a> - <a href="#">98.052056</a>
Bella Vista St	1	4858	Donna	<a href="#">26.260110</a> - <a href="#">98.052041</a> } <a href="#">.256398</a> - <a href="#">98.052630</a>
Bella vista St	1	5062	Donna	<a href="#">26.256386</a> - <a href="#">98.052640</a> } <a href="#">.253829</a> - <a href="#">98.052596</a>
Nuevo Amanecer Dr	1	5063	Donna	<a href="#">26.253822</a> - <a href="#">98.052598</a> } <a href="#">.253828</a> - <a href="#">98.049862</a>
Harmonia Dr	1	4784	Donna	<a href="#">26.263704</a> - <a href="#">98.050271</a> } <a href="#">.266528</a> - <a href="#">98.050265</a>
Harmonia Dr	1	4854	Donna	<a href="#">26.263666</a> - <a href="#">98.050273</a> } <a href="#">.260796</a> - <a href="#">98.050269</a>
Espacio Santo Dr	1	4785	Donna	<a href="#">26.266522</a> - <a href="#">98.050255</a> } <a href="#">.266226</a> - <a href="#">98.047583</a>
La Claridad Dr	1	4786	Donna	<a href="#">26.263708</a> - <a href="#">98.048450</a> } <a href="#">.266184</a> - <a href="#">98.048474</a>
La Paz Dr	1	4855	Donna	<a href="#">26.260784</a> - <a href="#">98.048787</a> } <a href="#">.260801</a> - <a href="#">98.050271</a>
La Claridad Dr	1	4856	Donna	<a href="#">26.263505</a> - <a href="#">98.048464</a> } <a href="#">.256405</a> - <a href="#">98.049472</a>
La Claridad Dr	1	5064	Donna	<a href="#">26.256373</a> - <a href="#">98.049481</a> } <a href="#">.253852</a> - <a href="#">98.049832</a>
Atardecer Dr	1	5066	Donna	<a href="#">26.255126</a> - <a href="#">98.049712</a> } <a href="#">.255222</a> - <a href="#">98.051004</a>
Harmonia Dr	1	5065	Donna	<a href="#">26.259126</a> - <a href="#">98.051084</a> } <a href="#">.255217</a> - <a href="#">98.051036</a>
Verde Cir	1	3913	Donna	<a href="#">26.256300</a> - <a href="#">98.063544</a> } <a href="#">.256311</a> - <a href="#">98.063547</a>
Alberta Rd	1	2557	Donna	<a href="#">26.241952</a> - <a href="#">98.043272</a> } <a href="#">.241924</a> - <a href="#">98.050452</a>
Alberta Rd	1	1663	Donna	<a href="#">26.241962</a> - <a href="#">98.037424</a> } <a href="#">.241921</a> - <a href="#">98.043400</a>
W Trenton N	1	877	Donna	<a href="#">26.249176</a> - <a href="#">98.045435</a> } <a href="#">.249175</a> - <a href="#">98.049213</a>
W Trenton Rd	1	1902	Donna	<a href="#">26.249227</a> - <a href="#">98.037480</a> } <a href="#">.249057</a> - <a href="#">98.045377</a>
Nueces Cir	1	4678	Donna	<a href="#">26.248996</a> - <a href="#">98.074778</a> } <a href="#">.248990</a> - <a href="#">98.072250</a>
Emily Rd	1	5196	Donna	<a href="#">26.249264</a> - <a href="#">98.055626</a> } <a href="#">.251876</a> - <a href="#">98.055582</a>
Haydee Dr	1	5197	Donna	<a href="#">26.249189</a> - <a href="#">98.053860</a> } <a href="#">.251846</a> - <a href="#">98.053867</a>
Klarissa Rd	1	5198	Donna	<a href="#">26.249219</a> - <a href="#">98.052179</a> } <a href="#">.251875</a> - <a href="#">98.052184</a>
Frances Dr	1	5199	Donna	<a href="#">26.249232</a> - <a href="#">98.050436</a> } <a href="#">.251894</a> - <a href="#">98.050300</a>

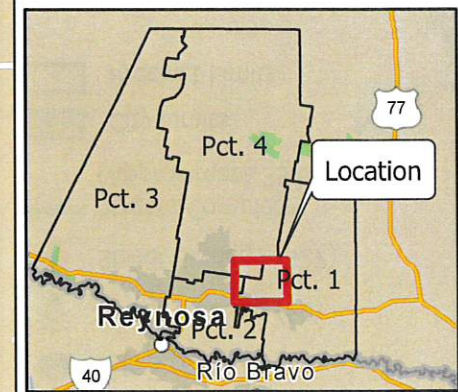
Adelee Dr	1	5195	Donna	<a href="#">26.251964 -98.050160</a> ; <a href="#">251938 -98.055742</a>
Jazmin St	1	4996	Donna	<a href="#">26.246456 -98.057403</a> ; <a href="#">246477 -98.056363</a>
Azucena St	1	4995	Donna	<a href="#">26.249091 -98.056329</a> ; <a href="#">246490 -98.056329</a>
Julius Cir	1	4006	Donna	<a href="#">26.244172 -98.057445</a> ; <a href="#">244156 -98.058947</a>
Guadalupe Dr	1	4693	Donna	<a href="#">26.241778 -98.074289</a> ; <a href="#">244994 -98.074316</a>
Violeta St	1	4924	Donna	<a href="#">26.227796 -98.085144</a> ; <a href="#">230140 -98.084722</a>
Gladiola St	1	4923	Donna	<a href="#">26.230152 -98.084671</a> ; <a href="#">229936 -98.083065</a>
Lirio St	1	4922	Donna	<a href="#">26.227556 -98.083404</a> ; <a href="#">229882 -98.083019</a>
Gene St	1	4881	Donna	<a href="#">26.227208 -98.077682</a> ; <a href="#">230068 -98.077705</a>
Noemi St	1	4882	Donna	<a href="#">26.230052 -98.078369</a> ; <a href="#">230068 -98.077705</a>
Noemi St	1	4880	Donna	<a href="#">26.230052 -98.078369</a> ; <a href="#">230107 -98.073393</a>
Noemi St	1	4809	Donna	<a href="#">26.230114 -98.073484</a> ; <a href="#">230046 -98.068412</a>
Noemi St	1	None	Donna	<a href="#">26.230041 -98.068352</a> ; <a href="#">228157 -98.067836</a>
Richard St	1	4879	Donna	<a href="#">26.227193 -98.076906</a> ; <a href="#">230083 -98.076928</a>
Russell st	1	4878	Donna	<a href="#">26.230074 -98.076151</a> ; <a href="#">229131 -98.076146</a>
Susan St	1	4877	Donna	<a href="#">26.227213 -98.075356</a> ; <a href="#">230088 -98.075375</a>
Russell St	1	4883	Donna	<a href="#">26.227206 -98.076135</a> ; <a href="#">228540 -98.076163</a>
Lane St	1	4876	Donna	<a href="#">26.227220 -98.074590</a> ; <a href="#">230087 -98.074596</a>
Mackenzie St	1	4875	Donna	<a href="#">26.227180 -98.073804</a> ; <a href="#">230096 -98.073831</a>
Katherine Dr	1	4803	Donna	<a href="#">26.227232 -98.073018</a> ; <a href="#">230082 -98.073043</a>
Presey Dr	1	4804	Donna	<a href="#">26.227234 -98.072247</a> ; <a href="#">230116 -98.072264</a>
Christopher Dr	1	4805	Donna	<a href="#">26.227238 -98.071466</a> ; <a href="#">230100 -98.071487</a>
Adrain Dr	1	4806	Donna	<a href="#">26.229439 -98.071464</a> ; <a href="#">229482 -98.069841</a>
Rogelio Dr	1	4808	Donna	<a href="#">26.230118 -98.069816</a> ; <a href="#">229461 -98.069839</a>
Ester Dr	1	4807	Donna	<a href="#">26.228690 -98.071459</a> ; <a href="#">228848 -98.069460</a>
Sequoia St	1	None	Donna	<a href="#">26.227283 -98.068797</a> ; <a href="#">230019 -98.068813</a>
Violeta St	1	4948	Donna	<a href="#">26.231801 -98.078127</a> ; <a href="#">231870 -98.081127</a>



# Hidalgo County Street Inventory Progress

## Legend

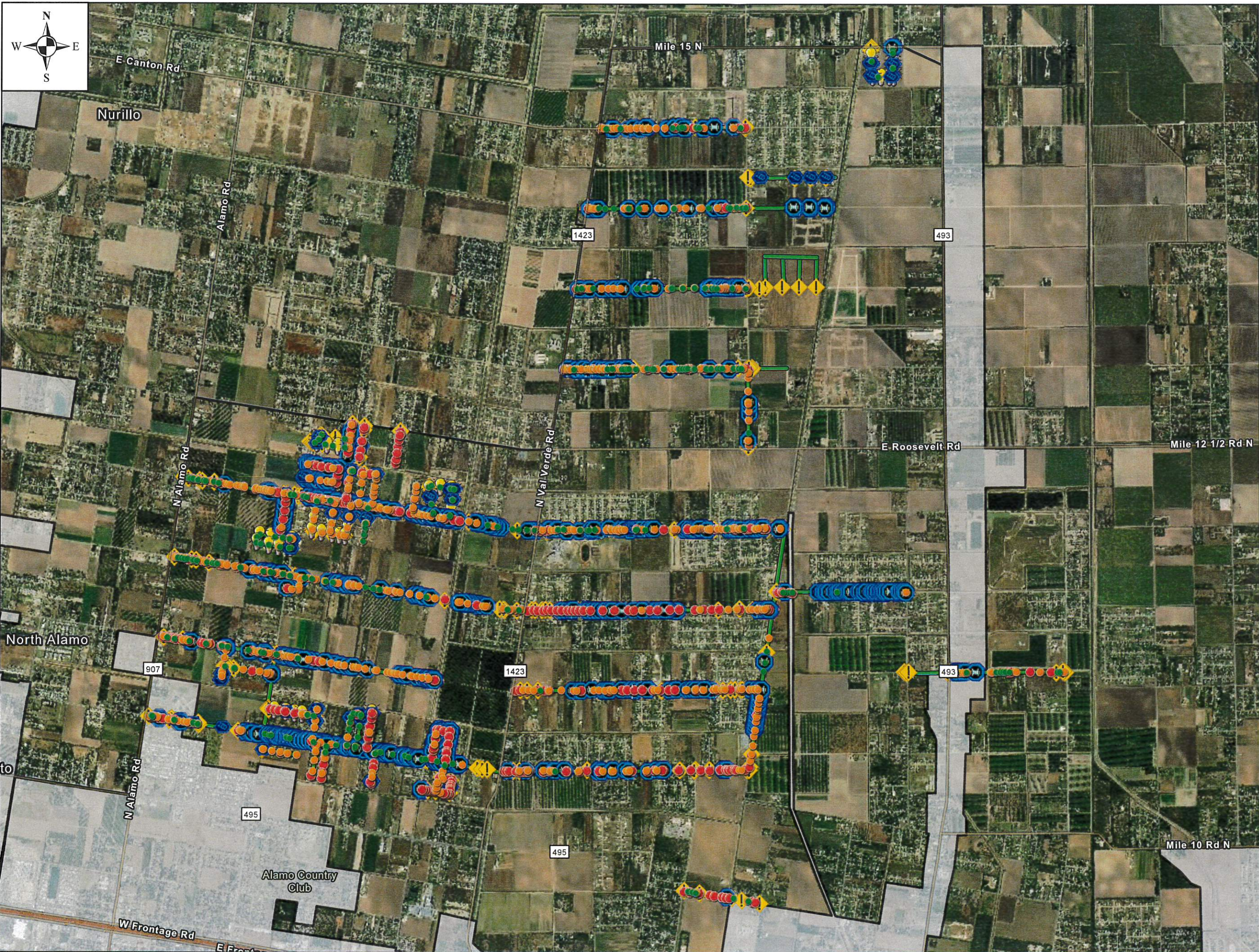
- Road Defect Low (293)
- Road Defect Medium (677)
- Road Defect High (492)
- Culverts (956)
- Inlets (81)
- Street Lighting (60)
- Street Signage (427)
- Streets Complete (Approximate 35.6 Miles)
- City Limits
- Precinct Limits



Vicinity Map

## EXHIBIT A MAPS

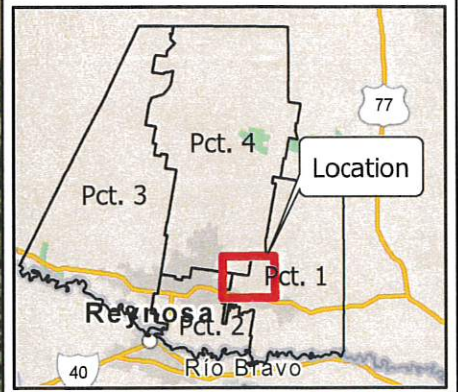




# Hidalgo County Street Inventory Progress

## Legend

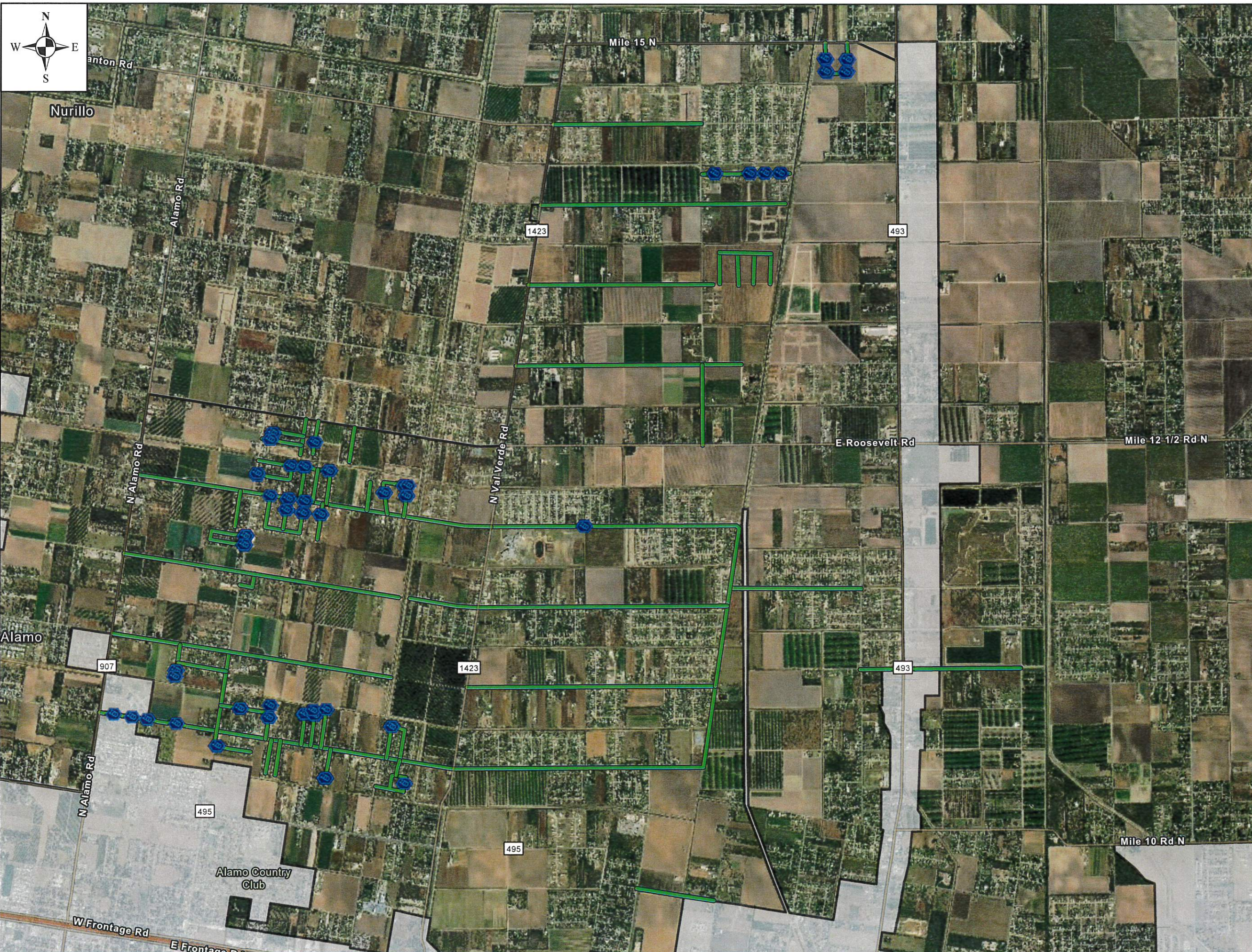
- Road Defect Low (293)
- Road Defect Medium (677)
- Road Defect High (492)
- Culverts (956)
- Inlets (81)
- Street Lighting (60)
- Street Signage (427)
- Streets Complete (Approximate 35.6 Miles)
- City Limits
- Precinct Limits



Vicinity Map

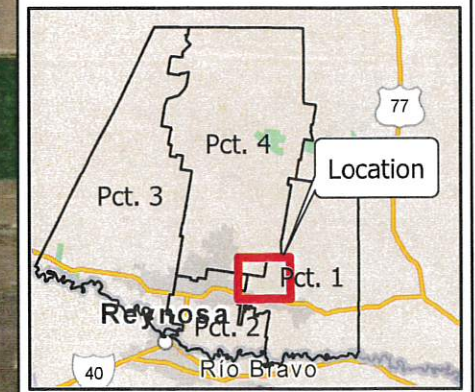






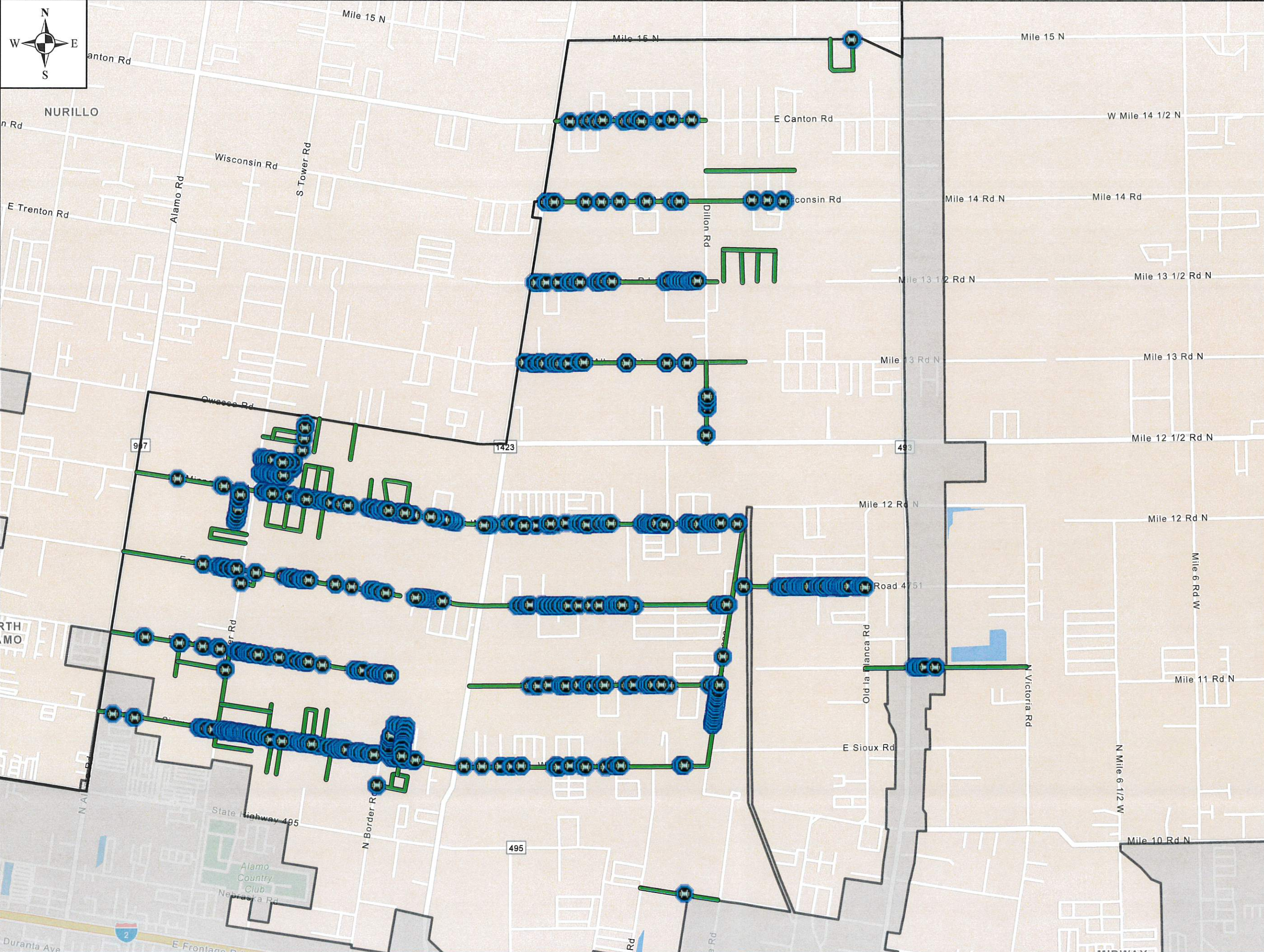
# Hidalgo County Street Inventory Progress Showing Inlets Only

- Legend
- Road Defect Low (293)
  - Road Defect Medium (677)
  - Road Defect High (492)
  - Culverts (956)
  - Inlets (81)
  - 💡 Street Lighting (60)
  - ⚠️ Street Signage (427)
  - Streets Complete (Approximate 35.6 Miles)
  - City Limits
  - Precinct Limits



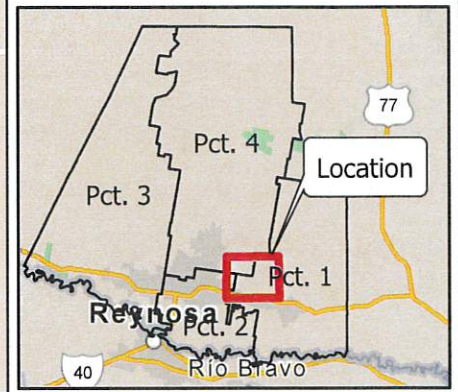
Vicinity Map





# Hidalgo County Street Inventory Progress Showing Culverts Only

- Legend**
- Road Defect Low (293)
  - Road Defect Medium (677)
  - Road Defect High (492)
  - Culverts (956)
  - Inlets (81)
  - Street Lighting (60)
  - Street Signage (427)
  - Streets Complete (Approximate 35.6 Miles)
  - City Limits
  - Precinct Limits



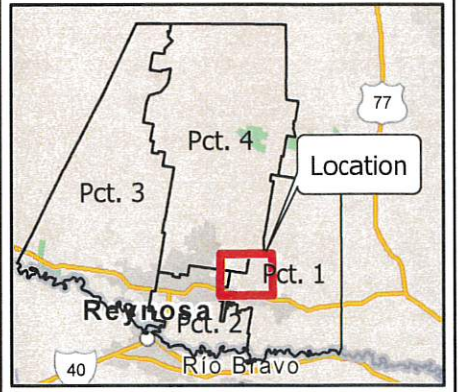
Vicinity Map





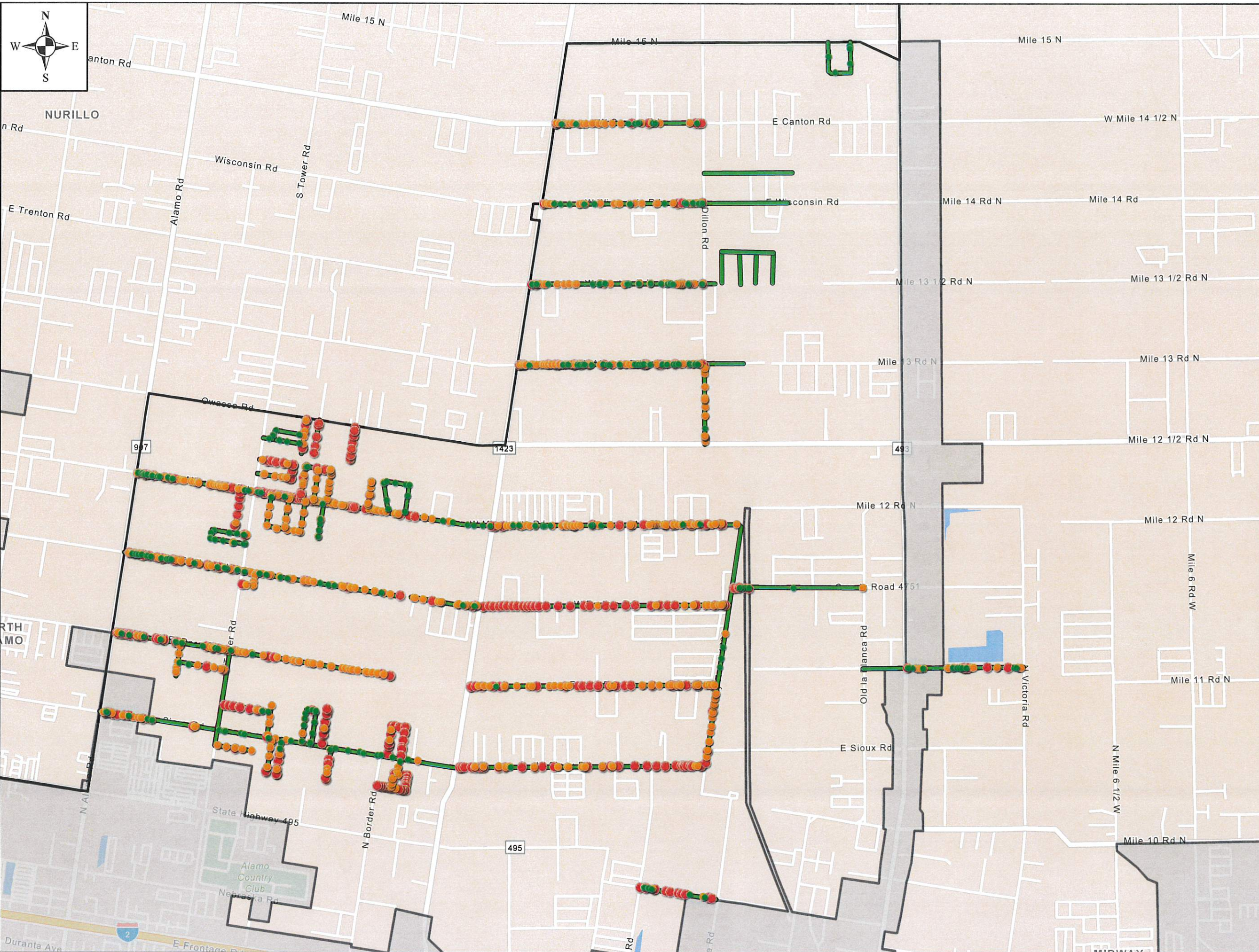
# Hidalgo County Street Inventory Progress Showing Culverts Only

- Legend
- Road Defect Low (293)
  - Road Defect Medium (677)
  - Road Defect High (492)
  - Culverts (956)
  - Inlets (81)
  - Street Lighting (60)
  - Street Signage (427)
  - Streets Complete (Approximate 35.6 Miles)
  - City Limits
  - Precinct Limits



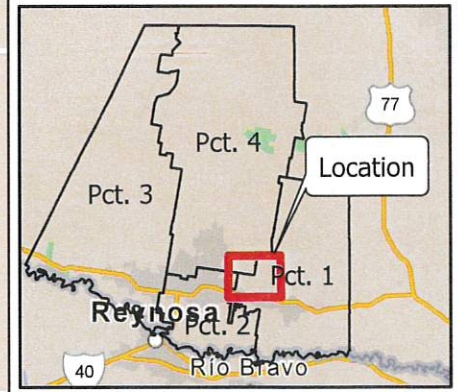
Vicinity Map





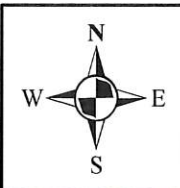
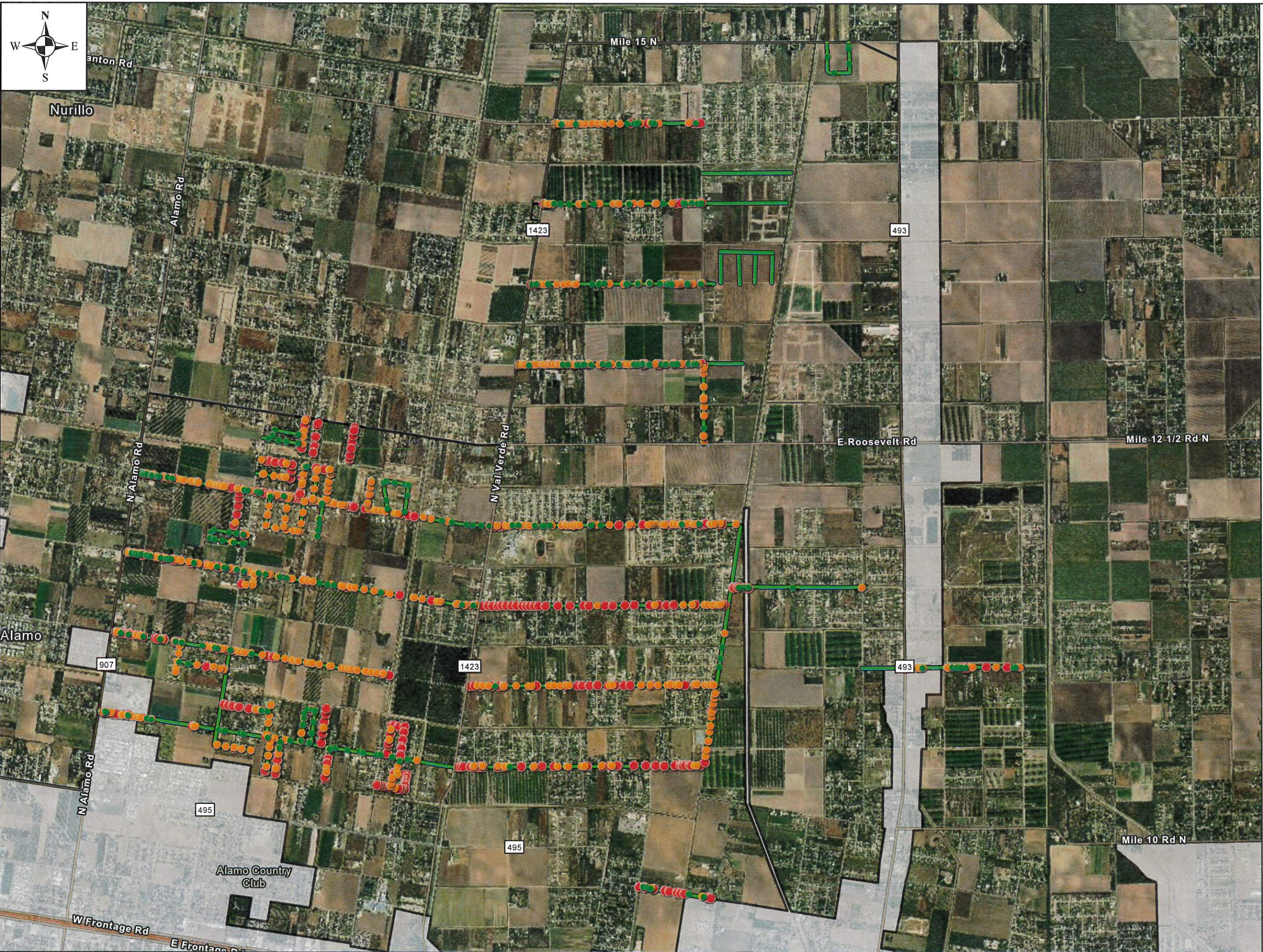
# Hidalgo County Street Inventory Progress Showing Road Defects Only

- Legend**
- Road Defect Low (293)
  - Road Defect Medium (677)
  - Road Defect High (492)
  - Culverts (956)
  - Inlets (81)
  - Street Lighting (60)
  - Street Signage (427)
  - Streets Complete (Approximate 35.6 Miles)
  - City Limits
  - Precinct Limits



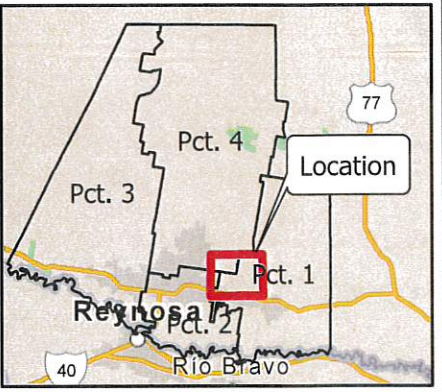
Vicinity Map





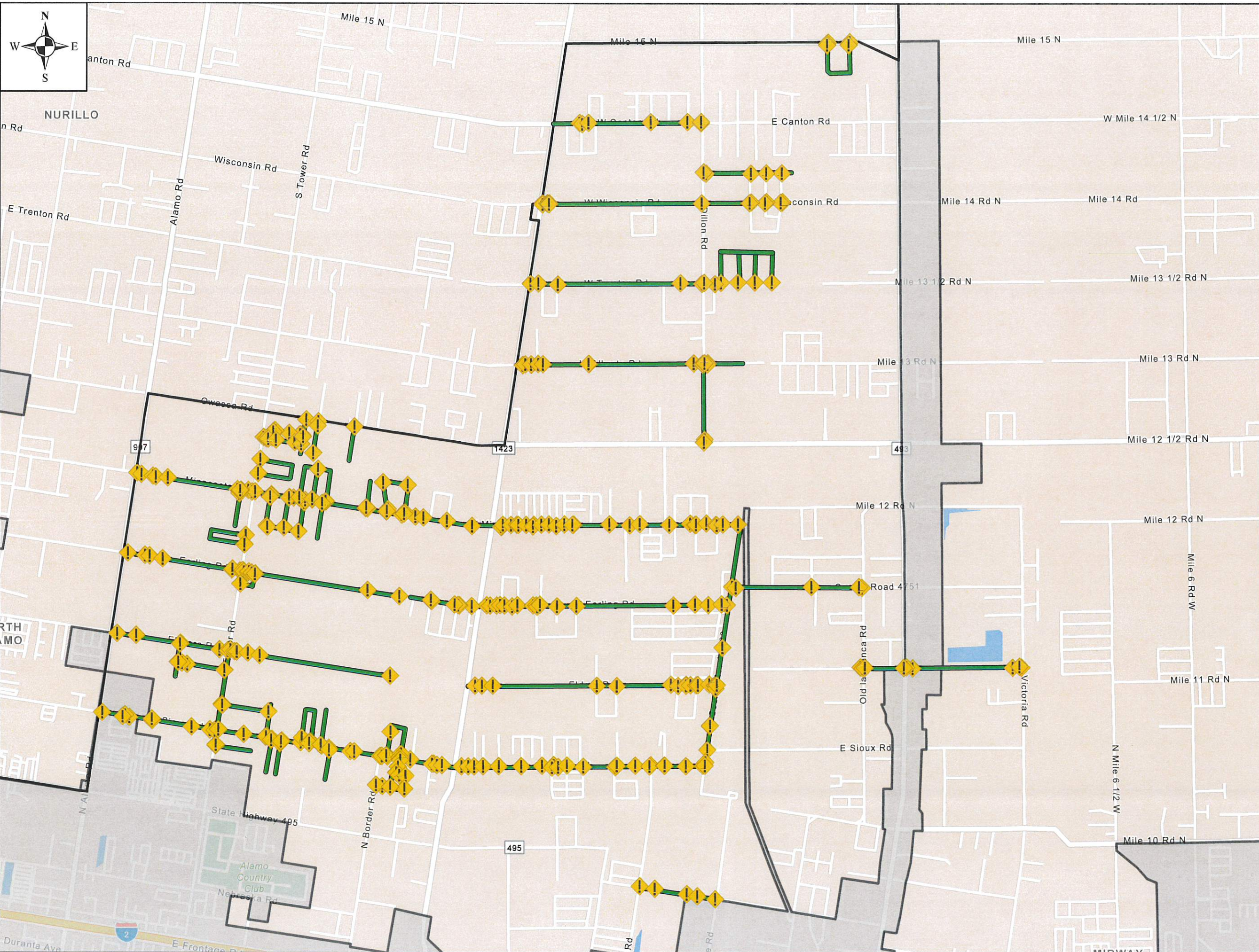
# Hidalgo County Street Inventory Progress Showing Road Defects Only

- Legend
- Road Defect Low (293)
  - Road Defect Medium (677)
  - Road Defect High (492)
  - Culverts (956)
  - Inlets (81)
  - Street Lighting (60)
  - Street Signage (427)
  - Streets Complete (Approximate 35.6 Miles)
  - City Limits
  - Precinct Limits



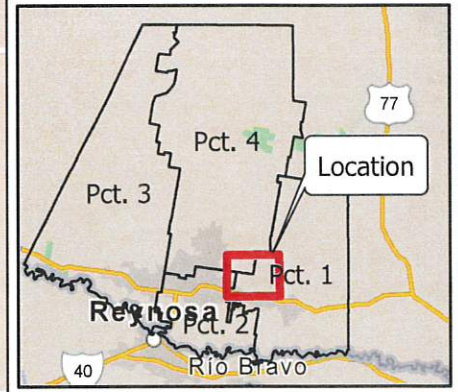
Vicinity Map





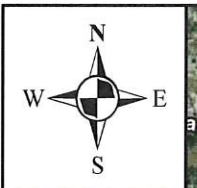
# Hidalgo County Street Inventory Progress Showing Street Signage Only

- Legend
- Road Defect Low (293)
  - Road Defect Medium (677)
  - Road Defect High (492)
  - Culverts (956)
  - Inlets (81)
  - Street Lighting (60)
  - Street Signage (427)
  - Streets Complete (Approximate 35.6 Miles)
  - City Limits
  - Precinct Limits



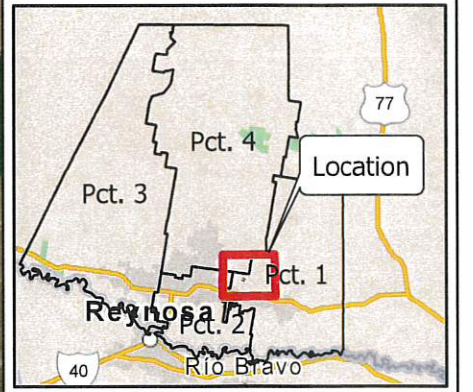
Vicinity Map





# Hidalgo County Street Inventory Progress Showing Street Signage Only

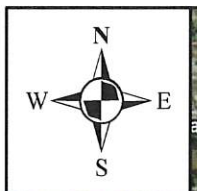
- Legend
- Road Defect Low (293)
  - Road Defect Medium (677)
  - Road Defect High (492)
  - ⊗ Culverts (956)
  - ⊗ Inlets (81)
  - 💡 Street Lighting (60)
  - ⚠ Street Signage (427)
  - Streets Complete (Approximate 35.6 Miles)
  - City Limits
  - Precinct Limits



Vicinity Map

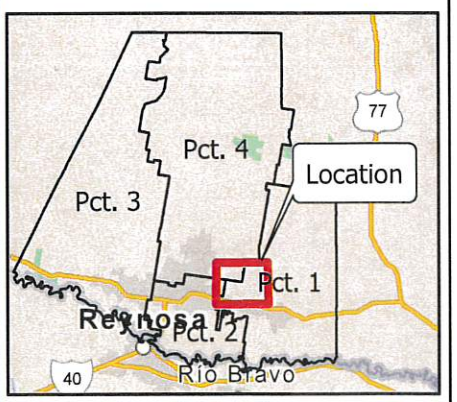






# Hidalgo County Street Inventory Progress Showing Street Lighting Only

- Legend
- Road Defect Low (293)
  - Road Defect Medium (677)
  - Road Defect High (492)
  - Culverts (956)
  - Inlets (81)
  - Street Lighting (60)
  - Street Signage (427)
  - Streets Complete (Approximate 35.6 Miles)
  - City Limits
  - Precinct Limits



Vicinity Map

