

SAM Engineering and Surveying



Engineering Firm Reg # 10602 Surveying Firm Reg # 101416-00
200 S. 10th Street, Suite 1500, McAllen, Texas 78501 Phone: (956) 702-8880 Fax: (956) 702-8883

December 7, 2021

John Paul Lugo
Program Manager II
505 S. McColl Rd., 2nd Floor
Edinburg, Texas 78539

Re: Professional Engineering Services- Contract C-21-0435-09-21
 Work Authorization No. 1 – Roadway & Bridge Inventory Assessment Study and Report(s)

Dear Mr. Lugo,

Attached for your review and approval is our request for Payment No. 3 for services rendered under Work Authorization No. 1, executed September 21, 2021. Services rendered are for work completed November 1, 2021, through November 30, 2021, on the above referenced project.

The following is a narrative of the progress for this period:

TASK DESCRIPTIONS

Phase 1: Preparatory	70.28%
-----------------------------	---------------

Preparatory Task 1-10

- Review County provided criteria, previous database, existing basemaps, and any other pertinent project documents.
- Prepare Project Management Plan for services during project duration.
- Prepare/Coordinate & Conduct Project Coordination meetings with Hidalgo County Officials
- Prepare preliminary list of “new” roadways or developments in the County since previous GASB Report
- Develop a database containing all assessment parameters
- Develop a georeferenced mapping system to contain and display all the defects and their severity
- Evaluate software/systems to provide the condition ratings for each roadway

Project Management Task 1-10**16.67%**

- Prepare and submit Monthly invoicing to County
- Coordinate Project Segment Kickoff Meetings with each Precinct to establish the Precinct's priorities and identify primary points of contact.
- Coordinate with Hidalgo County Officials to obtain county road historical data (construction date, maintenance, etc.)
- Conduct Internal Meetings with all team members to ensure adherence to scope, schedule, and budget
- Conduct Monthly meetings with each Precinct to review project progress, scope of work and adherence to schedule
- Coordinate & attend field visits with Hidalgo County Officials throughout the duration of the project.
- Process RFI's and coordinate with Hidalgo County Officials as needed to request clarifications of street limits, conflicts in name, lack of access, etc.
- Conduct "Hold Points" (new task/scope of work) meetings and "Hands Down" (incident review) meetings as needed
- Quality Control reviews of data processing
- QA/QC of Database, PCI, GIS Files, GASB Report

Phase 2: Roadway Inventory**9.24%****Data Collection**

- Perform on-site assessment identifying all roadway elements such as Apparent ROW, Pavement Type and Width, Street Length, Sidewalks, and Striping.
- Collect georeferenced photographic evidence of all street signage including Speed Limits, Traffic Signs, Regulatory Signs, Warning Signs, Construction & Maintenance Signs, Service Signs, and Guide Signs
- Assess the efficacy of Roadway Drainage
- Provide a Condition Rating of all defects identified within County Roads
- Daily quality control of field activities to ensure proper categorization
- Capture and compile photographic evidence roadway conditions

Update Database(s)**9.25%**

- Populate and maintain the database containing all assessment parameters and Condition Rating Score.
- Provide an estimate for roadway improvements required and capitalize all existing roadways.
- Develop proposed improvement schedule/categories
- Populate and maintain the georeferenced mapping system to contain and display all the defects and their severity
- Develop and maintain a PCI based on field parameters.

SAM Engineering and Surveying



Engineering Firm Reg # 10602 Surveying Firm Reg # 101416-00
200 S. 10th Street, Suite 1500, McAllen, Texas 78501 Phone: (956) 702-8880 Fax: (956) 702-8883

Phase 3: GASB Report **00.00%**

GASB Report

- Prepare and present exhibits to county officials to include Database Reports, GIS Files, Management Plan, etc.
- Calculate historical value, prepare existing value and replacement, repair, and maintenance costs of county roads based on information collected.
- Identify optimal replacement and repair costs
- Prepare final GASB-34 report to present to Hidalgo County Officials

Direct Expenses **16.67%**

For your review and consideration attached is our Request for Payment No. 3.
Should you have any questions regarding this submittal please do not hesitate to call me at 956-702-8880.

Respectfully,

A handwritten signature in blue ink, appearing to read "SDM", is written over a light blue horizontal line.

Samuel D. Maldonado, P.E., R.P.L.S
Principal
SAMES, Inc.

Hidalgo County Precinct No. 1

**PROFESSIONAL SERVICES –
INSPECTION, MATERIAL TESTING AND CONSTRUCTION MANAGEMENT**

REQUEST FOR PAYMENT NO: 3 (November, 2021)
BILLING PERIOD: November 1, 2021 through November 30, 2021

CITY/COUNTY: Hidalgo County
PROJECT NAME: Roadway & Bridge Inventory Assessment Study & Report(s)
Work Authorization No. 1
ENG./ARCH. FIRM: SAMES, Inc. (SAM Engineering and Surveying)
ADDRESS: 200 S 10TH ST, SUITE 1500
CITY/STATE: McAllen, Texas ZIP: 78501


Contract Amt. \$ 1,660,128.92

Contract #: C-21-0435-09-21

Purchase Order#: 838888


SCOPE OF SERVICES	ESTIMATED AMOUNT	% COMPLETED TO DATE	TOTAL DUE	LESS PREVIOUS PAYMENTS	AMOUNT DUE THIS REQUEST
Phase 1: Preparatory	\$180,706.00	70.28%	\$127,000.18	\$109,000.00	\$18,000.18
Task 1-7. Preparatory.					
Task 1-10. Project Management.	\$245,226.00	16.67%	\$40,879.17	\$20,435.50	\$20,443.67
Phase 2: Roadway Inventory	\$975,984.00	9.24%	\$90,180.92	\$20,150.00	\$70,030.92
Task 1-6. Data Collection.					
Task 1-5. Update Database(s).	\$173,572.00	9.25%	\$16,055.41	\$3,550.00	\$12,505.41
Phase 3: GASB Report	\$68,204.00	0.00%	\$0.00	\$0.00	\$0.00
Task 1-4. GASB Report.					
Direct Expenses	\$16,436.92	16.67%	\$2,740.03	\$1,369.74	\$1,370.29
TOTAL	\$1,660,128.92	16.68%	\$276,855.71	\$154,505.24	\$122,350.47
Work Authorization Summary					
<u>WA No. 1</u>	<u>WA Amount</u> \$1,660,128.92	<u>Previously Invoiced</u> \$154,505.24	<u>Percentage Complete</u> 16.68%	<u>Remaining Balance</u> \$1,383,273.21	

* - Please attach supporting documents to this request.
I certify that the above is true and correct to the best of my knowledge.


 Samuel D. Maldonado, P.E., R.P.L.S. Date 12/7/2021
 Principal
 SAMES, Inc.



Memo

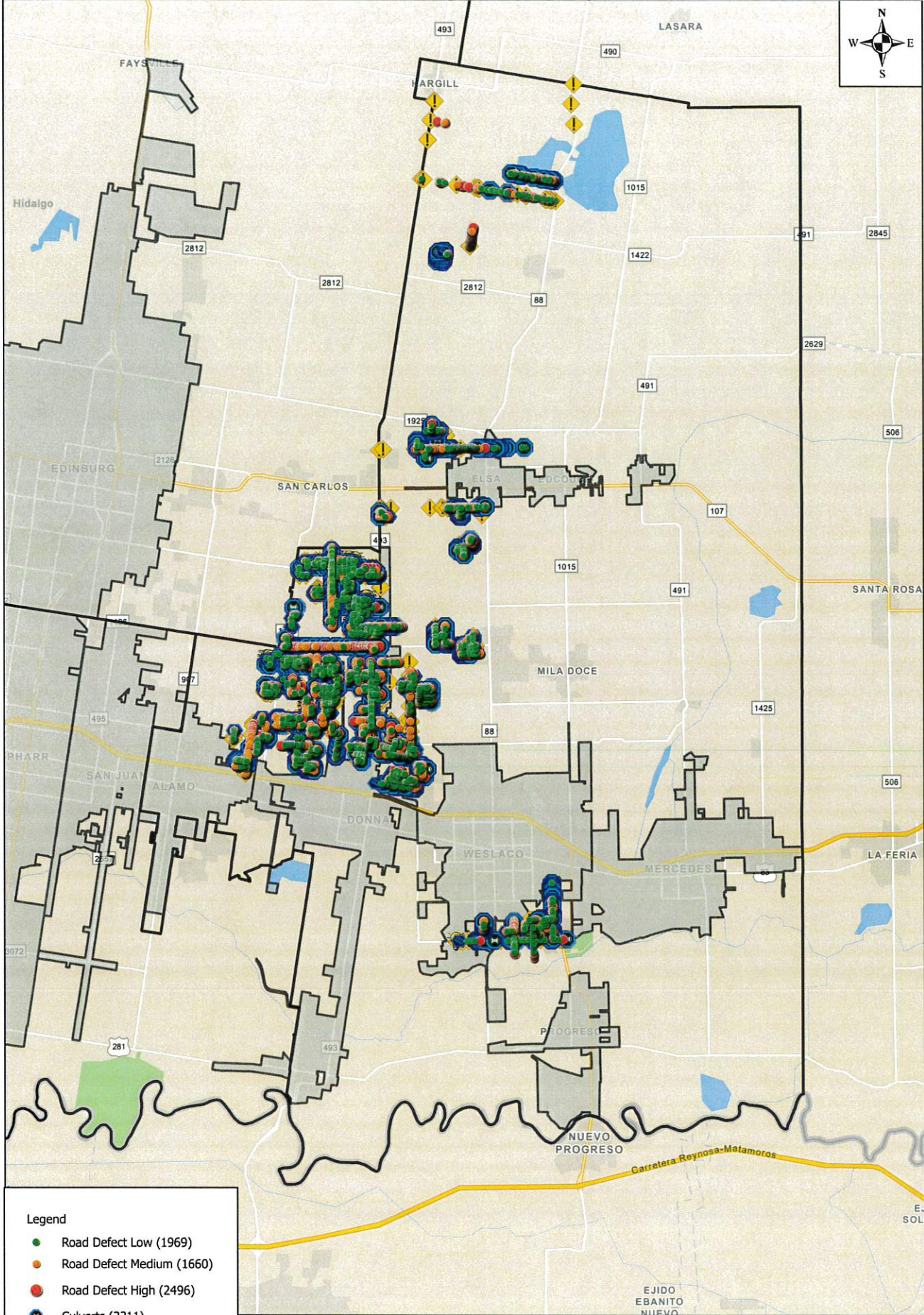
To: John Paul Lugo
From: Samuel D. Maldonado, P.E., R.P.L.S. 
Date: December 7, 2021
Re: Hidalgo County Street Inventory Invoice #3

Please see below for the list of items accomplished from November 1, 2021, to November 30, 2021, on the Hidalgo County Street Inventory Project. Should you have any questions, please do not hesitate to reach out to me.

1. SAMES, Inc. held kick-off meeting with Precinct 3 on November 10, 2021.
2. Obtained Hidalgo County's Planning Department GASB map shapefiles, and georeferenced data.
3. Total mileage inspected within Hidalgo County: 162.32 miles/ 9.24% miles (See Exhibit A).
4. Performed on-site inspection identifying all road elements on inspected county roads on Precinct 1 (See Exhibit A).
5. Performed on-site inspection of New Subdivisions with expiring warranties:
 - I. Camou Commercial Subdivision no defect identified.
 - II. Lockeheart Subdivision no defects identified.
6. Collected georeferenced photographic evidence of street signage on inspected county roads on Precinct 1 (See Exhibit A).
7. Collected the roadway drainage elements on inspected county roads on Precinct 1 (See Exhibit A).
8. Performed a condition rating of road defects on inspected county roads on Precinct 1 (See Exhibit A).
9. Captured and compiled photographic evidence of roadway conditions on inspected county roads on Precinct 1 (See Exhibit A).
10. Populated and maintained the database (See Exhibit B).

EXHIBIT

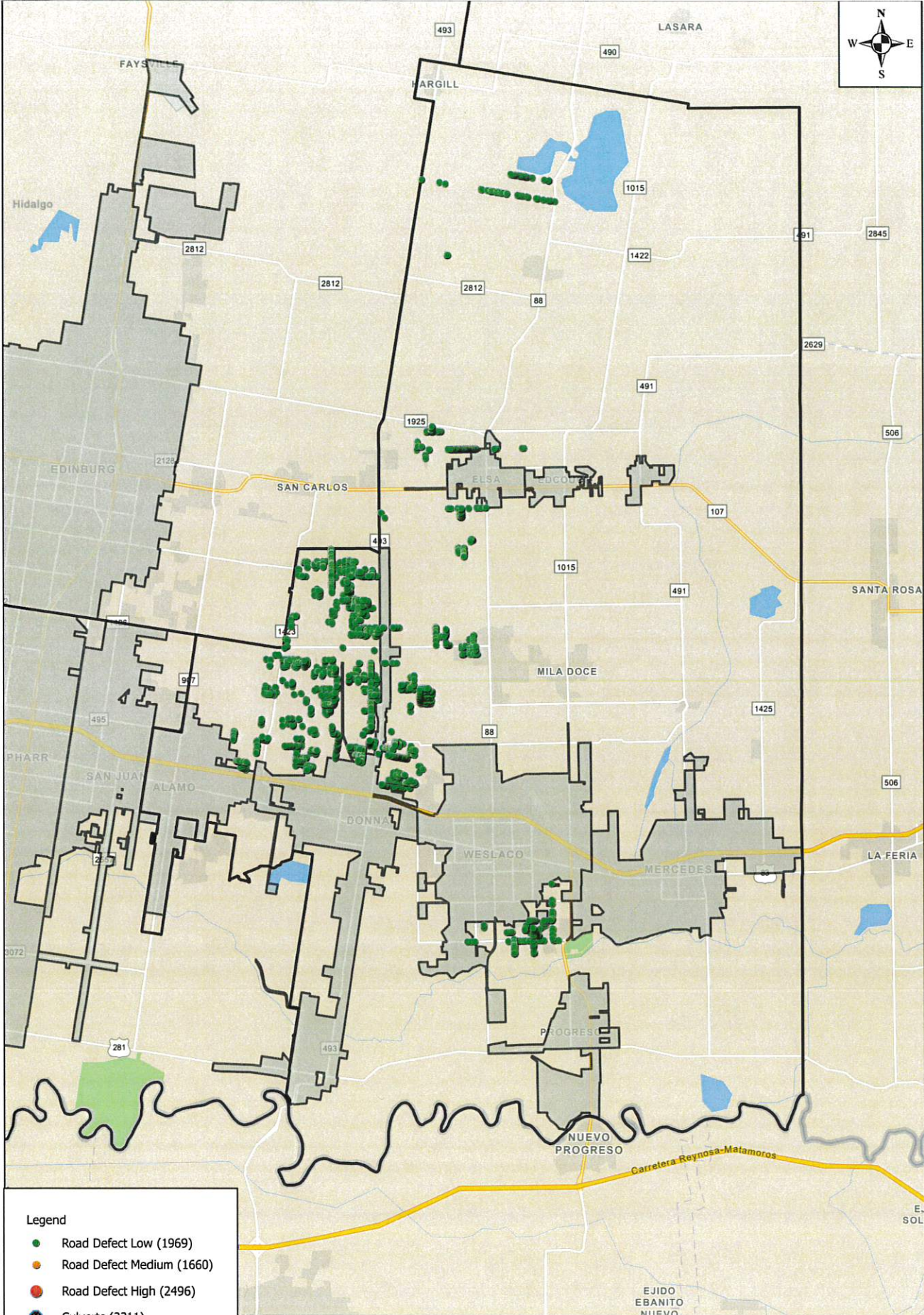
A



- Legend**
- Road Defect Low (1969)
 - Road Defect Medium (1660)
 - Road Defect High (2496)
 - Culverts (2311)
 - Inlets (444)
 - 💡 Street Lighting (198)
 - ◆ Street Signage (1522)
 - City Limits
 - Precinct Limits

Hidalgo County Street Inventory November Progress

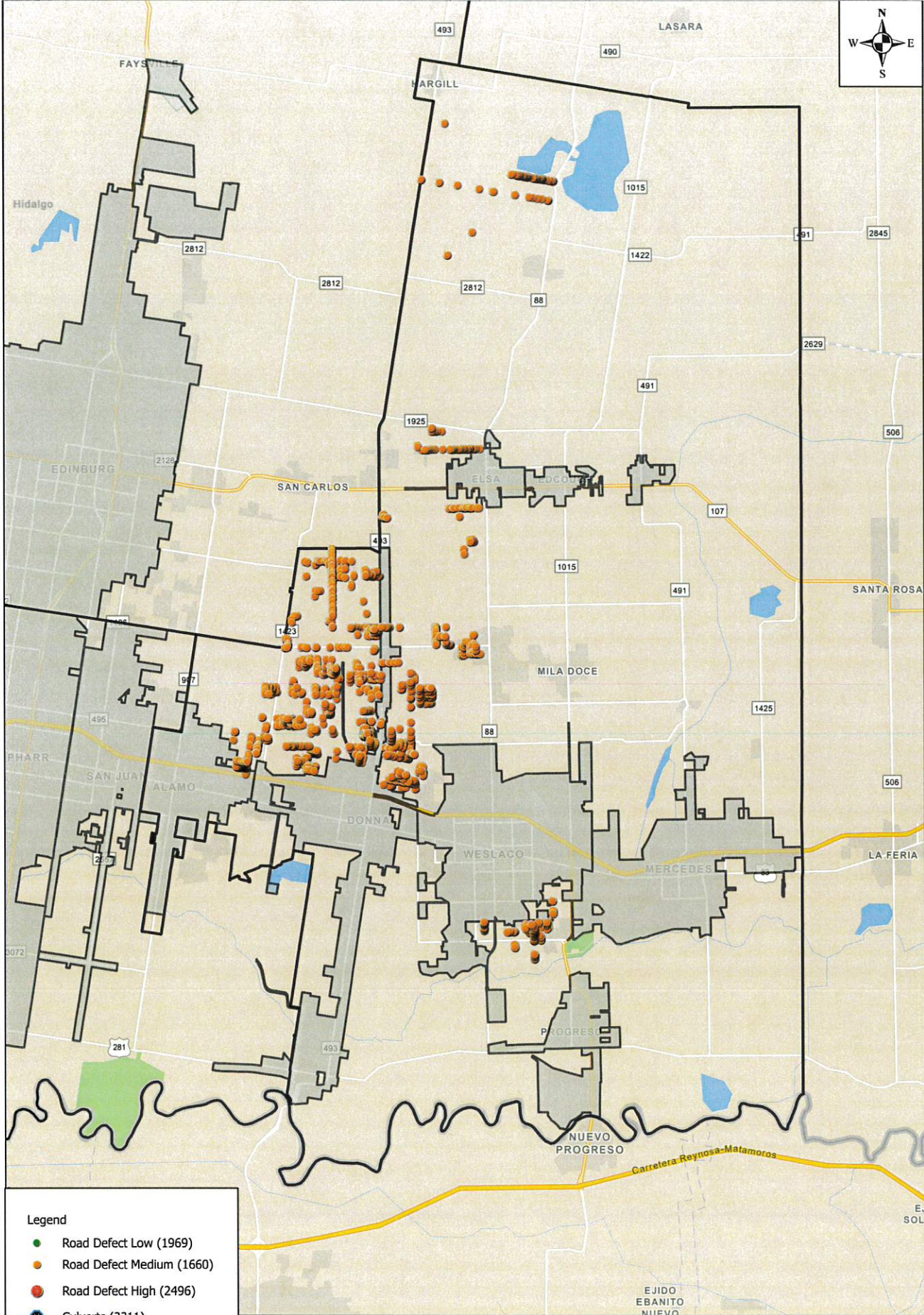




- Legend
- Road Defect Low (1969)
 - Road Defect Medium (1660)
 - Road Defect High (2496)
 - Culverts (2311)
 - Inlets (444)
 - 💡 Street Lighting (198)
 - ◆ Street Signage (1522)
 - ▭ City Limits
 - ▭ Precinct Limits

Hidalgo County Street Inventory
November Progress
Showing Low Road Defects Only

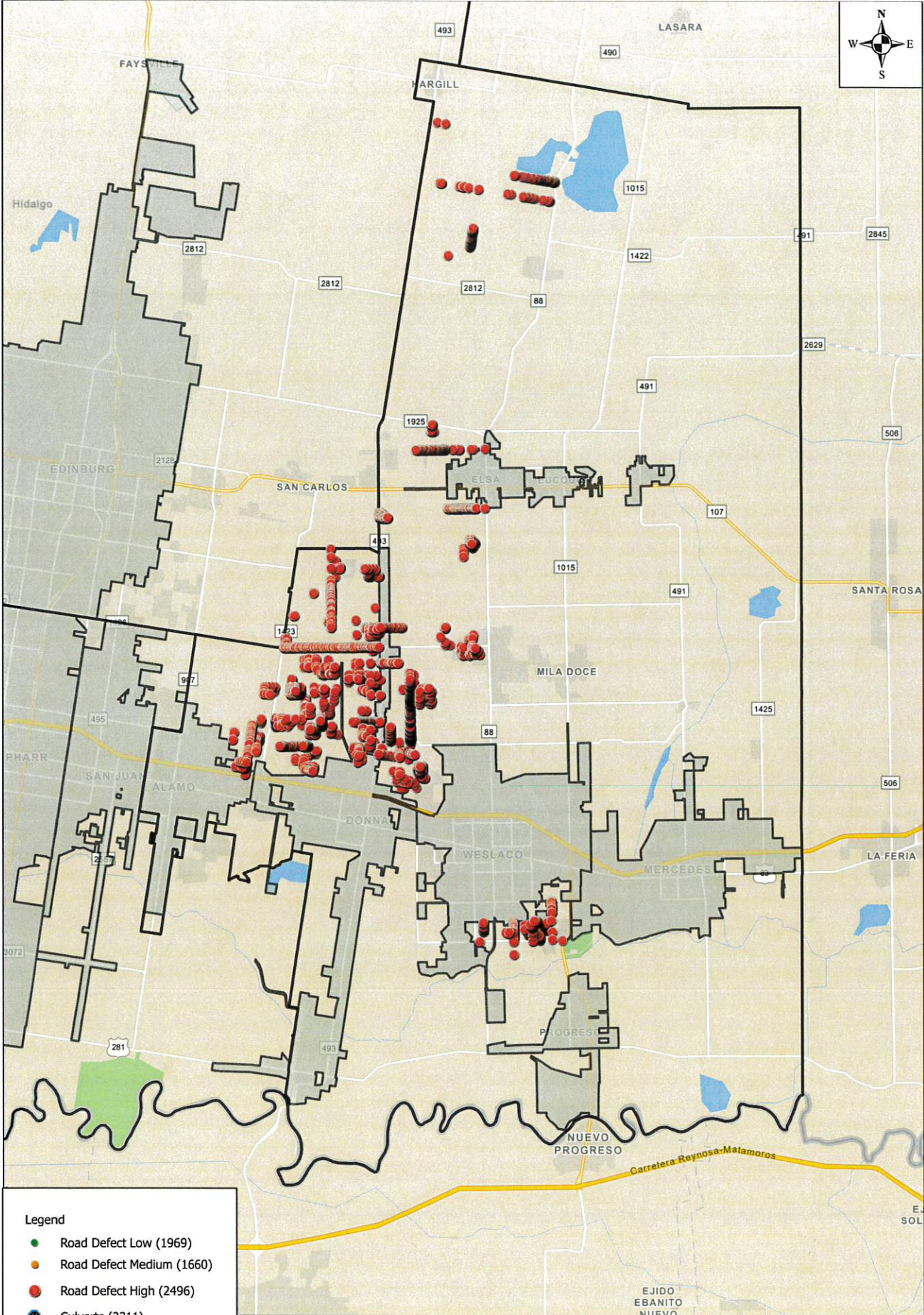




- Legend
- Road Defect Low (1969)
 - Road Defect Medium (1660)
 - Road Defect High (2496)
 - ⚙️ Culverts (2311)
 - ⚙️ Inlets (444)
 - 💡 Street Lighting (198)
 - 🚧 Street Signage (1522)
 - ▭ City Limits
 - ▭ Precinct Limits

Hidalgo County Street Inventory
November Progress
Showing Medium Road Defects Only

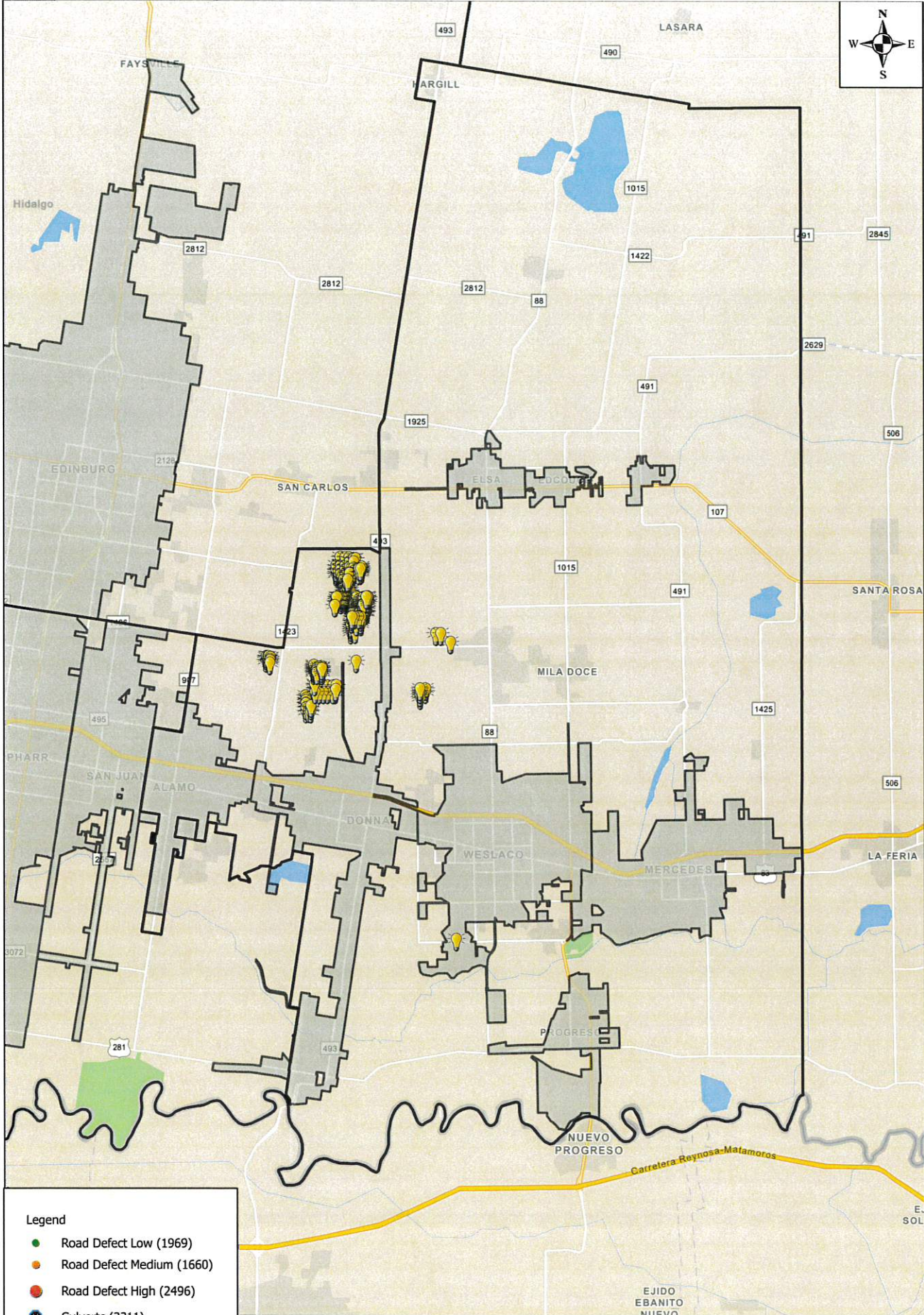




- Legend
- Road Defect Low (1969)
 - Road Defect Medium (1660)
 - Road Defect High (2496)
 - Culverts (2311)
 - Inlets (444)
 - Street Lighting (198)
 - Street Signage (1522)
 - ▭ City Limits
 - ▭ Precinct Limits

Hidalgo County Street Inventory
November Progress
Showing High Road Defects Only





- Legend**
- Road Defect Low (1969)
 - Road Defect Medium (1660)
 - Road Defect High (2496)
 - ⊗ Culverts (2311)
 - ⊗ Inlets (444)
 - 💡 Street Lighting (198)
 - ⚠️ Street Signage (1522)
 - City Limits
 - Precinct Limits

Hidalgo County Street Inventory
 November Progress
 Showing Street Lighting Only



EXHIBIT

B

Exhibit B - List of Roads Inspected - November 2021

Street Name	Pct	Road ID	City	Starting Point	End Point
Sally Dr	1	4962	Donna	26.263510 -98.071236	26.260858 -98.071214
Tommy Dr	1	4963	Donna	26.260846 -98.071168	26.260837 -98.068382
Lisa Dr	1	4964	Donna	26.263531 -98.069800	26.260844 -98.069777
Noe Dr	1	4965	Donna	26.263544 -98.068361	26.260903 -98.068345
Bob Dr	1	5015	Donna	26.263593 -98.069018	26.266049 -98.069028
Billy Dr	1	5016	Donna	26.266059 -98.069014	26.266071 -98.067827
Brian Dr	1	5014	Donna	26.263592 -98.067760	26.266036 -98.067797
Emeri In	1	5059	Donna	26.263668 -98.064227	26.266253 -98.064217
Buddy Ln	1	5060	Donna	26.265134 -98.064352	26.265098 -98.065254
Billy Dr	1	5058	Donna	26.266218 -98.065568	26.266315, -98.063631
Billy Dr	1	5013	Donna	26.266315, -98.063631	26.266337, -98.059600
Billy Dr	1	5126	Donna	26.266332, -98.059605	26.266341, -98.059003
Koch Rd	1	5012	Donna	26.263589 -98.062720	26.266235 -98.062745
Saucer Dr	1	5011	Donna	26.263598 -98.060943	26.266293 -98.060960
Encanto St	1	5125	Donna	26.263652 -98.058967	26.266214 -98.059046
Luz Divina Dr	1	4696	Donna	26.264196 -98.055709	26.266536 -98.055740
Luz Divina Dr	1	4760	Donna	26.262898, -98.055732	26.260444 -98.055697
Hermosa Vida Dr	1	4698	Donna	26.262907, -98.053902	26.266679 -98.053920
Hermosa vida Dr	1	4761	Donna	26.262907, -98.053902	26.260434 -98.053873
Bella Vista Dr	1	4762	Donna	26.266650 -98.052107	26.260234 -98.052056
Bella Vista St	1	4858	Donna	26.260110 -98.052041	26.258339, -98.052669
Bella vista St	1	5062	Donna	26.258339, -98.052669	26.253829 -98.052596
Nuevo amanecer Dr	1	5063	Donna	26.253822 -98.052598	26.253828 -98.049862
Harmonia Dr	1	4784	Donna	26.262928, -98.050278	26.266528 -98.050265
Harmonia Dr	1	4854	Donna	26.262928, -98.050278	26.258349, -98.051085
Espacio Santo Dr	1	4785	Donna	26.266522 -98.050255	26.266226 -98.047583
La Claridad Dr	1	4786	Donna	26.263708 -98.048450	26.266184 -98.048474
La Paz Dr	1	4855	Donna	26.260784 -98.048787	26.260801 -98.050271
La Claridad Dr	1	4856	Donna	26.263505 -98.048464	26.256405 -98.049472
La Claridad Dr	1	5064	Donna	26.256373 -98.049481	26.253852 -98.049832
Atardecer Dr	1	5066	Donna	26.255126 -98.049712	26.255222 -98.051004
Harmonia Dr	1	5065	Donna	26.258349, -98.051085	26.255217 -98.051036
Verde Cir	1	3913	Donna	26.256300 -98.063544	26.256311 -98.063547
Alberta Rd	1	2557	Donna	26.241952 -98.043272	26.241924 -98.050452
Alberta Rd	1	1663	Donna	26.241962 -98.037424	26.241921 -98.043400
W Trenton N	1	5106	Donna	26.249176 -98.045435	26.249175 -98.049213
W Trenton Rd	1	1902	Donna	26.249227 -98.037480	26.249057 -98.045377
Nueces Cir	1	4678	Donna	26.248996 -98.074778	26.248990 -98.072250
Emily Rd	1	5196	Donna	26.249264 -98.055626	26.251876 -98.055582
Haydee Dr	1	5197	Donna	26.249189 -98.053860	26.251846 -98.053867
Klarissa Rd	1	5198	Donna	26.249219 -98.052179	26.251875 -98.052184
Frances Dr	1	5199	Donna	26.249232 -98.050436	26.251894 -98.050300
Adelee Dr	1	5195	Donna	26.251964 -98.050160	26.251938 -98.055742
Jazmin St	1	4996	Donna	26.246456 -98.057403	26.246477 -98.056363

Azucena St	1	4995	Donna	26.249091 -98.056329	26.246490 -98.056329
Julius Cir	1	4006	Donna	26.244172 -98.057445	26.244156 -98.058947
Guadalupe Dr	1	4693	Donna	26.241778 -98.074289	26.244994 -98.074316
Violeta St	1	4924	Donna	26.227796 -98.085144	26.230140 -98.084722
Gladiola St	1	4923	Donna	26.230152 -98.084671	26.229936 -98.083065
Lirio St	1	4922	Donna	26.227556 -98.083404	26.229882 -98.083019
Gene St	1	4881	Donna	26.227208 -98.077682	26.230068 -98.077705
Noemi St	1	4882	Donna	26.230052 -98.078369	26.230116, -98.077296
Noemi St	1	4880	Donna	26.230116, -98.077296	26.230138, -98.073445
Noemi St	1	4809	Donna	26.230138, -98.073445	26.230046 -98.068412
Noemi St	1	None	Donna	26.230041 -98.068352	26.228157 -98.067836
Richard St	1	4879	Donna	26.227193 -98.076906	26.230083 -98.076928
Russell st	1	4878	Donna	26.230074 -98.076151	26.229131 -98.076146
Susan St	1	4877	Donna	26.227213 -98.075356	26.230088 -98.075375
Russell St	1	4883	Donna	26.227206 -98.076135	26.228540 -98.076163
Lane St	1	4876	Donna	26.227220 -98.074590	26.230087 -98.074596
Mackenzie St	1	4875	Donna	26.227180 -98.073804	26.230096 -98.073831
Katherine Dr	1	4803	Donna	26.227232 -98.073018	26.230082 -98.073043
Presey Dr	1	4804	Donna	26.227234 -98.072247	26.230116 -98.072264
Christopher Dr	1	4805	Donna	26.227238 -98.071466	26.230100 -98.071487
Adrain Dr	1	4806	Donna	26.229439 -98.071464	26.229482 -98.069841
Rogelio Dr	1	4808	Donna	26.230118 -98.069816	26.229461 -98.069839
Ester Dr	1	4807	Donna	26.228690 -98.071459	26.228848 -98.069460
Sequoia St	1	None	Donna	26.227283 -98.068797	26.230019 -98.068813
Violeta St	1	4948	Donna	26.231801 -98.078127	26.231870 -98.081127
Amber Ln	1	739	Donna	26.237727 -98.077023	26.237696 -98.076118
Alex Dr	1	722	Donna	26.237675 -98.076100	26.234528 -98.076069
Estrella St	1	5104	Donna	26.252488 -98.047643	26.245914 -98.048828
Ruby Red St	1	5107	Donna	26.252054 -98.047703	26.252089 -98.046263
Oro Blanco St	1	5108	Donna	26.252010 -98.046402	26.246543 -98.046299
Rio Rojo St	1	5105	Donna	26.246400 -98.048744	26.246497 -98.046786
Rio Rojo St	1	5148	Donna	26.246426 -98.046884	26.246453 -98.045420
Rio Rojo St	1	5148	Donna	26.246499 -98.045368	26.246488 -98.043038
Susie Dr	1	5147	Donna	26.249126 -98.044772	26.246544 -98.044624
Chevy Dr	1	5149	Donna	26.249131 -98.043131	26.246497 -98.043114
Susie Dr	1	5203	Donna	26.249169 -98.044389	26.252010 -98.044388
Indian Dr	1	5205	Donna	26.252082 -98.044386	26.252068 -98.042514
Chevy Dr	1	5204	Donna	26.249307 -98.042418	26.251995 -98.042406
Atlanta Ave	1	2313	Donna	26.260800 -98.037551	26.260755 -98.041499
Atlanta Ave	1	2314	Donna	26.260770 -98.041539	26.260773 -98.044720
Atlanta Ave	1	5171	Donna	26.260765 -98.044749	26.261080 -98.046471
Santa Fe St	1	2318	Donna	26.260819 -98.039128	26.263729 -98.039144
San Antonio St	1	2317	Donna	26.260809 -98.040630	26.263738 -98.040648
Tulsa Trl	1	2316	Donna	26.260800 -98.042122	26.263709 -98.042139
Durango Dr	1	2315	Donna	26.260800 -98.043618	26.263713 -98.043642
Paloma Pl	1	5170	Donna	26.260735 -98.045099	26.263689 -98.045134
Plaza Norte Dr	1	5172	Donna	26.262396 -98.045241	26.262393 -98.046213

Happy Times Trail Dr.	1	5029	Donna	26.241832 -98.049623	26.239203 -98.049556
Emilio Luna Dr	1	5028	Donna	26.241849 -98.047846	26.239397 -98.047799
Doctor Cross Dr	1	4977	Donna	26.241909 -98.046030	26.239280 -98.046006
Melchor Ocampo Dr	1	4979	Donna	26.241890 -98.044225	26.238960 -98.044168
Viejo Dr	1	2319	Donna	26.241917 -98.042837	26.238988 -98.043309
Viejo Dr	1	4978	Donna	26.238954 -98.043310	26.239272 -98.046908
Viejo Dr	1	5027	Donna	26.239271 -98.046901	26.239268 -98.049521
Sisters Dr	1	5071	Donna	26.241963, -98.049186	26.244587 -98.049192
Duke Dr	1	5069	Donna	26.241901 -98.047349	26.244595 -98.047330
Nursery Dr	1	5072	Donna	26.244663 -98.049261	26.244698 -98.045581
Starling Dr	1	5070	Donna	26.241965 -98.045468	26.244677 -98.045522
Loma Dr	1	2320	Donna	26.241915 -98.041800	26.238620 -98.041779
Bamboo Ave	1	690	Donna	26.241919 -98.040569	26.238967 -98.040511
Rattan Ave	1	730	Donna	26.238975 -98.040518	26.238997 -98.038735
Sago Ave	1	717	Donna	26.240055 -98.038720	26.238995 -98.038741
Formosa Ave	1	728	Donna	26.240067 -98.037416	26.240095 -98.040535
Datiles Ave	1	726	Donna	26.241242 -98.040540	26.241267 -98.037799
Marie Dr	1	735	Donna	26.233438 -98.039844	26.233426 -98.040744
Elena Dr	1	720	Donna	26.234657 -98.039809	26.233449 -98.039832
Los Cielos Cir W	1	4799	Donna	26.228807 -98.047419	26.226162 -98.047388
Los Cielos Cir S	1	4801	Donna	26.226144 -98.047390	26.226108 -98.045222
Los Cielos Cir E	1	4800	Donna	26.228817 -98.045968	26.226140 -98.045938
Road Runner St	1	753	Donna	26.224398 -98.041312	26.224360 -98.050363
Coyote St	1	755	Donna	26.222994 -98.041296	26.222975 -98.050372
Red Deer St	1	752	Donna	26.221612 -98.050392	26.224317 -98.050394
Rattler St	1	754	Donna	26.224377 -98.046440	26.221630 -98.046423
Rattler St	1	4666	Donna	26.221573 -98.046031	26.218074 -98.046167
N Hawk Dr	1	4301	Donna	26.219241 -98.044714	26.218895, -98.044761
N Hawk Dr	1	4299	Donna	26.218895, -98.044761	26.218450 -98.044654
Jefferson Dr	1	4294	Donna	26.219345 -98.041272	26.219299 -98.044624
Adams Dr	1	4300	Donna	26.218444 -98.041265	26.218451 -98.044616
Santa Lucia Dr	1	774	Donna	26.221615 -98.039147	26.218090 -98.039123
Laurel Ct	1	763	Donna	26.222803 -98.037062	26.222784 -98.040591
Fox Lake Ct	1	759	Donna	26.224334 -98.037078	26.224319 -98.040620
Roosevelt Rd	1	457	Donna	26.234461 -98.077614	26.234686 -98.037350
Mile 13 N	1	458	Donna	26.241931 -98.037309	26.242010 -98.028131
Mile 14 N	1	878	Donna	26.256395 -98.037381	26.256505, -98.036249
Mile 14 N	1	958	Donna	26.256505, -98.036249	26.256580 -98.023111
Mile 13 N	1	957	Donna	26.242028 -98.028114	26.242102 -98.022846
Viesha Ave	1	731	Donna	26.212773 -98.068268	26.215596 -98.068279
Viesha Ave	1	732	Donna	26.212716 -98.068268	26.210014 -98.068215
Grace Ave	1	747	Donna	26.209988 -98.068175	26.210009 -98.066265
Margaret Ave	1	734	Donna	26.212742 -98.066258	26.210039 -98.066241
Ella St	1	736	Donna	26.212770 -98.060040	26.209947 -98.060221
Judy Dr	1	748	Donna	26.209902 -98.060174	26.209927 -98.058381
Armando St	1	738	Donna	26.212789 -98.058145	26.209944 -98.058350
Faith St	1	4622	Donna	26.212829 -98.060617	26.215581 -98.060618

Gideon Ave	1	4619	Donna	26.215600 -98.060570	26.215642 -98.055651
Nathan Ave	1	4620	Donna	26.214531 -98.060597	26.214545 -98.056517
Joshua Dr	1	4623	Donna	26.215606 -98.056315	26.213503 -98.056693
Elijah Ave	1	4621	Donna	26.213436 -98.060605	26.213463 -98.056705
Yasmin St	1	4289	Donna	26.218156 -98.055230	26.218185, -98.059361
Yasmin St	1	4131	Donna	26.218185, -98.059361	26.218127 -98.064619
Liam St	1	4288	Donna	26.219338 -98.055017	26.219347, -98.058980
Liam St	1	4132	Donna	26.219347, -98.058980	26.219271 -98.064628
Aaron St	1	4290	Donna	26.217039 -98.056173	26.217016, -98.059265
Aaron St	1	4130	Donna	26.217016, -98.059265	26.216977 -98.064577
Jesse St	1	4129	Donna	26.219994 -98.064662	26.216921 -98.064696
Faith St	1	4128	Donna	26.220017 -98.060545	26.217021 -98.060514
Joshua Dr	1	4291	Donna	26.219324 -98.055744	26.217052 -98.056134
Apache Cir	1	4695	Donna	26.219953 -98.077968	26.219971 -98.076237
De La Rosa Cir	1	723	Donna	26.222844 -98.073882	26.219973 -98.073924
Whitetail Cir	1	741	Donna	26.219929 -98.074360	26.219947 -98.070326
Mule Dr	1	3759	Donna	26.219945 -98.072347	26.218335 -98.072341
Joel St	1	4624	Donna	26.223060 -98.054380	26.223082 -98.055531
Joshua Dr	1	4625	Donna	26.220092 -98.055502	26.223032 -98.055499
Gina Ave	1	776	Donna	26.227310 -98.056088	26.224746 -98.056087
Leal St	1	686	Donna	26.227284 -98.066892	26.230532 -98.066911
Modesto Ave	1	5057	Donna	26.227265 -98.064880	26.223966 -98.064964
Loma Dr	1	721	Donna	26.227316 -98.063838	26.230419 -98.063856
Esperanza St	1	4929	Donna	26.227267 -98.062905	26.226397 -98.062887
Cornelius Ave	1	4930	Donna	26.226362 -98.061783	26.226350 -98.063717
Fabian Ave	1	4932	Donna	26.225622 -98.063717	26.225630 -98.061741
Julius Ave	1	4933	Donna	26.224882 -98.063712	26.224882 -98.061745
Fe Ave	1	4934	Donna	26.224157 -98.063672	26.224155 -98.061750
Severino St	1	4931	Donna	26.226327 -98.063732	26.224219 -98.063731
Martin St	1	4935	Donna	26.224191 -98.061718	26.226349 -98.061761
Daisy Dr	1	4936	Donna	26.224515 -98.061676	26.224554, -98.061316
Daisy Dr	1	4923	Donna	26.224554, -98.061316	26.224558 -98.060325
Olga Ave	1	4292	Donna	26.227276 -98.060322	26.224594 -98.060311
Olga Ave	1	4699	Donna	26.227328 -98.060330	26.229970 -98.060350
Armando Ave	1	4700	Donna	26.227349 -98.058732	26.229988 -98.058751
Gina Ave	1	4701	Donna	26.227368 -98.057099	26.230031 -98.057180
Azteca Ave	1	4702	Donna	26.230021 -98.057184	26.229999 -98.060325
Armando Ave	1	778	Donna	26.227310 -98.058248	26.224731 -98.058206
Daisy Dr	1	773	Donna	26.224710 -98.058188	26.224745 -98.056106
Gina Ave	1	776	Donna	26.227307 -98.056093	26.224775 -98.056072
Glock St	1	743	Donna	26.218106 -98.080501	26.218214 -98.081308
Browning St	1	729	Donna	26.219897 -98.081049	26.216945 -98.081561
Colt St	1	727	Donna	26.220014 -98.082398	26.217115 -98.082911
Ithaca St	1	725	Donna	26.220207 -98.083746	26.217304 -98.084243
Remington St	1	724	Donna	26.220400 -98.085101	26.217472 -98.085594
Ruger st	1	745	Donna	26.217452 -98.085620	26.216949 -98.081556
Mayo Dr	1	48	Donna	26.206009 -98.087008	26.208982 -98.086502

White Eagle Rd	1	4138	Donna	26.205699 -98.085039	26.202864 -98.085529
Red Cloud Rd	1	4139	Donna	26.204265 -98.085242	26.204172 -98.084487
Sunset Dr	1	943	Donna	26.201252 -98.084067	26.200247 -98.084235
Evaristo Gonzalez W	1	3769	Donna	26.198925 -98.088881	26.201874 -98.087564
Colonia Gonzalez	1	3770	Donna	26.200058 -98.088649	26.201869 -98.087582
Amelia Ln	1	669	Donna	26.205430 -98.080616	26.208564 -98.080635
Luis Ybarra Jr Dr	1	668	Donna	26.205430 -98.079723	26.208343 -98.079611
Victor Dr	1	749	Donna	26.205438 -98.078145	26.208447 -98.078181
Carminia St	1	4227	Donna	26.205460 -98.075752	26.208162 -98.075779
Brisa St	1	4228	Donna	26.208155 -98.076775	26.206480 -98.076762
Julia St	1	4226	Donna	26.208158 -98.074764	26.206214 -98.074759
Margarita St	1	4225	Donna	26.205467 -98.073746	26.208148 -98.073792
Amy St	1	4229	Donna	26.208192 -98.073850	26.208202, -98.076280
Amy St	1	4230	Donna	26.208202, -98.076280	26.208173 -98.076744
Los Arboles St	1	751	Donna	26.205476 -98.072562	26.208067 -98.072575
Los Mesquites St	1	746	Donna	26.205489 -98.071219	26.208110 -98.071235
Las Rosas St	1	744	Donna	26.205492 -98.069866	26.208103 -98.069911
Las Palomas	1	750	Donna	26.208120 -98.069926	26.208092 -98.072557
Washington Dr	1	684	Donna	26.211302 -98.041264	26.211276 -98.044903
Puma Dr.	1	617	Donna	26.219192 -98.025014	26.219140 -98.028944
Mesa Dr.	1	619	Donna	26.220817 -98.025030	26.220763 -98.028927
E Sioux Rd	1	884	Donna	26.206976 -98.045161	26.207059, -98.049171
Nicole Dr	1	621	Donna	26.220086 -98.024958	26.220235 -98.023505
E Sioux Rd	1	465	Donna	26.207087, -98.045050	26.207132, -98.037131
E Sioux Rd	1	885	Donna	26.207150, -98.036973	26.207215, -98.029249
Stephanie Dr	1	612	Donna	26.218452 -98.023458	26.221525 -98.023497
E Sioux Rd	1	883	Donna	26.206997 -98.048914	26.206994 -98.052736
Liz Ave	1	408	Donna	26.223644 -98.024986	26.223649 -98.023487
Kathy Ave	1	698	Donna	26.222125 -98.023457	26.225177 -98.023486
Santa Clara St	1	4677	Donna	26.206114 -98.037226	26.206177 -98.040902
Donna Plaza Dr	1	767	Donna	26.204153 -98.041206	26.204202 -98.043500
Victoria Rd	1	351	Donna	26.228936 -98.037118	26.228982 -98.029503
Victoria Rd	1	806	Donna	26.228961 -98.029500	26.228882 -98.025009
Donna Plaza East	1	772	Donna	26.204675 -98.043551	26.203781 -98.043541
Donna Plaza North	1	769	Donna	26.204668 -98.043573	26.204652 -98.044549
Donna Plaza South	1	771	Donna	26.203749 -98.043569	26.203743 -98.044602
Bobwhite Ave	1	765	Donna	26.202805 -98.041212	26.202797 -98.044490
Hawk St	1	677	Donna	26.202783 -98.044532	26.201841 -98.044528
Grouse Ave	1	762	Donna	26.201853 -98.044502	26.201876 -98.041180
Mockingbird St	1	678	Donna	26.202756 -98.042746	26.201915 -98.042752
Dallas St	1	768	Edcouch	26.200025 -98.039690	26.197955 -98.040022
Houston St	1	760	Donna	26.197943 -98.040063	26.198238 -98.042057
Austin St	1	770	Donna	26.198227 -98.042035	26.200288 -98.041680
Dove St	1	659	Donna	26.197951 -98.047354	26.196906 -98.050395
Boyce St	1	660	Donna	26.197631 -98.048303	26.198027 -98.050865
De Los Rios Ave	1	656	Donna	26.197167 -98.047372	26.196768 -98.044568
Encino Dr	1	658	Donna	26.197834 -98.044347	26.195726 -98.044670

Fresno Dr	1	657	Donna	26.197872 -98.045798	26.195966 -98.046099
N Victoria Rd	1	917	Donna	26.225364 -98.025035	26.229005 -98.024959
Apache Dr	1	779	Donna	26.194957 -98.047724	26.194516 -98.044785
Navajo Dr	1	785	Donna	26.194534 -98.044787	26.192085 -98.045186
N Victoria Rd	1	692	Alamo	26.194897 -98.025457	26.225467 -98.025034
Cherokee Dr	1	782	Donna	26.192244 -98.046656	26.194668 -98.046242
E Mile 9 1/2 Rd	1	326	Donna	26.195386 -98.038404	26.193599 -98.025719
El Sol Dr	1	595	Weslaco	26.213939 -98.015885	26.213873 -98.020938
Zamorano St	1	934	Donna	26.194141 -98.029383	26.197275 -98.028862
Mi Tierra Dr	1	594	Weslaco	26.214976 -98.021001	26.215065 -98.015906
Mi Cielo Dr	1	592	Weslaco	26.216191 -98.015927	26.216113 -98.021021
Mis Padres Dr	1	590	Weslaco	26.217226 -98.021043	26.217310 -98.015941
Las Nubes Dr	1	588	Weslaco	26.218427 -98.015963	26.218351 -98.021066
Palm St	1	328	Donna	26.195462 -98.025322	26.195177 -98.023284
Martinez Ave	1	937	Donna	26.197546 -98.028313	26.199840 -98.027925
Laura Suzann Ln	1	766	Donna	26.199831 -98.029469	26.198027 -98.029778
Pippa PL	1	764	Donna	26.199800 -98.031170	26.198221 -98.031417
Gandy Rd	1	683	Donna	26.199937 -98.032952	26.205293, -98.032953
Gandy Rd	1	938	Donna	26.205293, -98.032953	26.207164 -98.032950
Diana St	1	689	Donna	26.204504 -98.032932	26.204518 -98.029619
La Estrella Dr	1	586	Weslaco	26.219428 -98.021037	26.219532 -98.015986
Pueblo Del Sol West	1	575	Weslaco	26.213873 -98.020961	26.219446 -98.021072
E Mile 8 1/2 N	1	324	Donna	26.182668 -98.027684	26.184426 -98.040273
Castillo St	1	801	Donna	26.182352 -98.022738	26.182990 -98.027476
E Sugar Cane Dr	1	325	Donna	26.182936 -98.022316	26.183617 -98.027350
Martin morales rd	1	875	Weslaco	26.242179 -98.014426	26.235403 -98.014329
Cypress Dr	1	607	Donna	26.184820 -98.027256	26.185791 -98.034113
Cypress Dr	1	606	Donna	26.184810 -98.027173	26.184217 -98.023109
Tasha Dr	1	601	Donna	26.184279 -98.023036	26.185401 -98.023637
Isabel Dr	1	609	Donna	26.185437 -98.023672	26.185710 -98.025662
Abraham Dr	1	706	Donna	26.184663 -98.025890	26.185691 -98.025706
Mel C Grey	1	874	Weslaco	26.235546 -98.008231	26.242226 -98.010272
Orlando Tijerina Rd	1	832	Weslaco	26.238615 -98.014341	26.238645 -98.010297
Callalily Dr	1	611	Donna	26.186128 -98.027053	26.186957 -98.032787
Ovalles st	1	463	Weslaco	26.235036 -98.003660	26.231604 -98.003605
Violet Dr	1	603	Donna	26.186917 -98.032323	26.189078 -98.031927
Pineda st	1	873	Weslaco	26.232068 -98.003578	26.232082 -98.002620
Daisy Dr	1	605	Donna	26.186736 -98.030994	26.188946 -98.030606
Lilac Dr	1	608	Donna	26.186567 -98.029661	26.188711 -98.029279
San Angelo St	1	451	Weslaco	26.231634 -98.002600	26.235048 -98.002648
Sunflower Dr	1	613	Donna	26.187789 -98.029330	26.187430 -98.026786
Elena St	1	597	Weslaco	26.186550 -98.018906	26.190835 -98.021708
Leyenda St	1	602	Weslaco	26.190855 -98.021683	26.190859 -98.019970
Geronimo St	1	593	Weslaco	26.190834 -98.019887	26.187081 -98.020140
Fernando St	1	596	Weslaco	26.188162 -98.020846	26.190812 -98.020800
Marlen St	1	3874	Weslaco	26.189492 -98.019770	26.189559 -98.016317
Tasha Dr	1	545	Weslaco	26.235141 -98.002070	26.236488 -98.002087

Isabel Dr	1	546	Weslaco	26.236474 -98.002021	26.236537 -97.998943
Abraham Dr	1	544	Weslaco	26.237794 -97.998957	26.237663 -98.000788
Timothy Dr	1	547	Weslaco	26.239344 -97.998452	26.235182 -97.998875
Cruz Rocha Sr Dr	1	450	Weslaco	26.235051 -98.000215	26.231697 -98.000157
Citrus Hills Dr	1	549	Weslaco	26.235082 -97.999399	26.232214 -97.999336
Citrus Hills Cir	1	550	Weslaco	26.232136 -97.999273	26.232073 -97.995956
Orchard In	1	551	Weslaco	26.232223 -97.997848	26.235106 -97.997903
Grover Cir	1	548	Weslaco	26.233598 -97.997842	26.233486 -97.996674
Nittler Rd	1	1005	Edcouch	26.398871 -97.964251	26.399308 -97.967193
Nitter Rd	1	2629	Edcouch	26.406975 -98.020051	26.403490 -97.996089
Nitter Rd	1	1003	Edcouch	26.403476 -97.996048	26.401765 -97.984221
Nittler Rd	1	1004	Edcouch	26.399281 -97.967193	26.401770 -97.984167
Norene Dr	1	1190	Edcouch	26.401261 -97.980147	26.408297 -97.978876
Rowland Rd	1	1211	Edcouch	26.4429247 -97.964433	26.4346996 -97.9575945
11th St	1	1204	Edcouch	26.427141 -97.956347	26.432137 -97.990907
Jesus Flores Rd	1	1191	Edcouch	26.381944 -97.999957	26.384015 -97.999567
11th St	1	2410	Edcouch	26.435243 -98.011835	26.4350926 -98.0107981
Jesus Flores Rd	1	1065	Edcouch	26.383893 -97.999567	26.389156 -97.998648
Jesus Flores Rd	1	1066	Edcouch	26.389175 -97.998654	26.390995 -97.998300
Jesus Flores Rd	1	1192	Edcouch	26.389072 -97.998664	26.389383 -97.998600
12th st	1	2587	Edcouch	26.428485 -98.016072	26.428094 -98.013411
Jesus Flores Rd	1	1066	Edcouch	26.389385 -97.998597	26.390315 -97.998426
12th st	1	1850	Edcouch	26.428120 -98.013442	26.427477 -98.009157
Jesus Flores Rd	1	1067	Edcouch	26.390319 -97.998422	26.403475 -97.996087
12th St	1	2449	Edcouch	26.427477 -98.009157	26.425890, -97.998066
12th St	1	2448	Edcouch	26.425890, -97.998066	26.425890, -97.998065
Jesus Flores Rd	1	1068	Edcouch	26.403614 -97.996059	26.407796 -97.995306
Charles Green Rd	1	2590	Edcouch	26.421278 -98.017315	26.420281 -98.010233
Luca St	1	4997	Edcouch	26.376633 -98.013434	26.379701 -98.012904
Lennox Dr	1	4998	Edcouch	26.379532 -98.011693	26.380153 -98.010296
Livia Dr	1	4999	Edcouch	26.376236 -98.011121	26.379940 -98.010495
Calle De Ana St	1	5000	Edcouch	26.379357 -98.010531	26.379162 -98.009453
Calle De Ana St	1	4740	Edcouch	26.379171 -98.009449	26.379059 -98.008663
Charles Green Rd	1	1007	Edcouch	26.406210 -97.964488	26.408954 -97.982912
Goolie rd	1	3895	Donna	26.227272 -98.053769	26.202585 -98.054647
Goodlie Rd	1	502	Donna	26.202592 -98.054644	26.193553 -98.056129
Dillon Rd	1	1670	Donna	26.270886 -98.057607	26.234635 -98.057351
Dillon Rd	1	940	Donna	26.234542 -98.061419	26.227320 -98.061285
Swallow Rd	1	789	Donna	26.193805 -98.067939	26.193776 -98.072404
Fuego Ave	1	777	Donna	26.195309 -98.063935	26.195709 -98.066799
Chispa Ave	1	780	Donna	26.195073 -98.066934	26.196871 -98.066596
Fogata Ave	1	775	Donna	26.196868 -98.066593	26.196492 -98.063726
Sparrow St	1	793	Donna	26.190976 -98.069240	26.193783 -98.068753
Green Jay St	1	791	Donna	26.190957 -98.072466	26.193723 -98.072475
Cordoba Cir	1	4902	Donna	26.198251 -98.070313	26.198254 -98.072242
Peacock Dr	1	792	Donna	26.191563 -98.072441	26.191580 -98.069170
Cordoba dr	1	4903	Donna	26.198166 -98.072241	26.195117 -98.072216

Raven Dr	1	790	Donna	26.192691 -98.068971	26.192681 -98.072441
Rebecca Dr	1	311	Donna	26.191093 -98.068334	26.190608 -98.064727
Huisache Cir	1	742	Donna	26.205481 -98.066452	26.204199 -98.066416
Kirby Dr	1	310	Donna	26.189734 -98.064877	26.190235 -98.068492
Marie Dr	1	309	Donna	26.188871 -98.065026	26.189364 -98.068642
Ramos De Flores Rd	1	740	Donna	26.205542 -98.061422	26.207364 -98.061948
N Border Rd	1	32	Alamo	26.206413 -98.090239	26.187622 -98.093469
Jacqueline Dr	1	46	Alamo	26.189974 -98.093107	26.190609 -98.097513
Marcus Dr	1	43	Alamo	26.190205 -98.094583	26.192284 -98.094226
E Nebraska	1	78	Alamo	26.1927491 -98.097257	26.192090 -98.092736
Valley Blvd	1	22	Alamo	26.203576 -98.097917	26.200259 -98.098490
Old La Blanca Rd	1	350	Donna	26.228879 -98.041307	26.200328 -98.041123
Flores del Sol Ave	1	3771	Alamo	26.198810 -98.088413	26.195368 -98.089003
E Sioux Rd	1	885	Donna	26.207154 -98.036995	26.207175 -98.029312
E Sioux Rd	1	964	Donna	26.207181 -98.029322	26.207207 -98.024948
Gandy Rd	1	938	Donna	26.207145 -98.032971	26.205226 -98.032948
E mile 11 n	1	825	Donna	26.214396 -98.037014	26.214316 -98.047227
Estates St	1	4668	Donna	26.214404 -98.038463	26.216917 -98.038486
Ferguson Rd	1	314	Donna	26.198196 -98.067256	26.198188 -98.074751
Marisol Dr	1	4667	Donna	26.216942 -98.037027	26.216924 -98.041199
Mile 16 N	1	880	Elsa	26.285690 -98.019410	26.285859 -98.009233
Mile 16 N	1	461	Elsa	26.285880 -98.009125	26.286119 -97.993283
Mile 17 1/2 N	1	990	Elsa	26.306908 -98.037747	26.307399 -98.029755
Mile 17 1/2 N	1	1030	Elsa	26.308155 -97.977427	26.307450 -98.022589
Diana St	1	3882	Elsa	26.282725 -98.003583	26.285915 -98.003618
El Mesquite St	1	3884	Elsa	26.282759 -98.004319	26.282766 -98.003629
Julie st	1	3885	Elsa	26.285913 -98.004446	26.282752 -98.004366
Nicolas Sr	1	889	Elsa	26.286058 -97.995083	26.282555 -97.995078
Mile 16 N	1	4284	Elsa	26.285591 -98.037620	26.285632 -98.023184
Alice St	1	992	Elsa	26.307471 -98.021808	26.310997 -98.021884
Saltillo St	1	1090	Elsa	26.307489 -98.020152	26.310874 -98.020218
Michael St	1	1088	Elsa	26.307476 -98.018583	26.303969 -98.018519
Kevin St	1	1089	Elsa	26.307483 -98.017638	26.304018 -98.017577
Everhard St	1	627	Elsa	26.282468 -98.037563	26.282436 -98.034082
Wane St	1	626	Elsa	26.284257 -98.037568	26.282460 -98.035043
Wane Cir	1	628	Elsa	26.283755 -98.036492	26.283364 -98.037121
Nachita St	1	999	Elsa	26.307615 -98.013350	26.311000 -98.013416
Lee Ann St	1	1142	Elsa	26.312452 -98.009749	26.312361 -98.013283
Servando Barrera rd	1	892	Elsa	26.271377 -98.004963	26.269616 -98.004923
Rogers Rd	1	1139	Elsa	26.314182 -98.009823	26.314133 -98.018157
John T Eberle Dr	1	890	Elsa	26.271444 -98.004393	26.274714 -98.004433
Harmel Dr	1	1118	Elsa	26.314171 -98.016107	26.316804 -98.015640
Garza st	1	891	Elsa	26.271428 -98.002647	26.267985 -98.002637
Garza Cir	1	476	Elsa	26.272853 -97.999067	26.272856 -97.999092
Elma St	1	477	Elsa	26.271593 -97.999066	26.272835 -97.999079
W Mile 5 N	1	1303	Weslaco	26.126195 -97.998074	26.126330 -97.989990
E Mile 5 N	1	1304	Weslaco	26.126312 -97.989974	26.126693 -97.965883

Erasmio dr	1	1328	Weslaco	26.133991 -97.968125	26.130342 -97.968066
E 26th st	1	1327	Weslaco	26.130756 -97.968093	26.130691 -97.971172
E Mile 5 N	1	1305	Weslaco	26.126689 -97.965882	26.126788 -97.959907
E 25th st	1	1326	Weslaco	26.131474 -97.971522	26.131523 -97.968101
E 24 TH ST	1	1325	Weslaco	26.132302 -97.968121	26.132230 -97.971855
E 23 TH ST	1	1324	Weslaco	26.133086 -97.972228	26.133143 -97.968145
Carmen Dr	1	1362	Weslaco	26.130317 -97.971036	26.133925 -97.972630
E 28 TH ST	1	1331	Weslaco	26.128548 -97.971700	26.128515 -97.973957
Babb Dr	1	1329	Weslaco	26.126648 -97.971101	26.129400 -97.972305
E 27 TH ST	1	1332	Weslaco	26.129378 -97.972334	26.129370 -97.973960
S Pleasantview Dr	1	1322	Weslaco	26.148041 -97.966292	26.126710 -97.965891
E 26 TH ST	1	1361	Weslaco	26.130225 -97.973973	26.130244 -97.973080
E 27 TH ST	1	1334	Weslaco	26.129703 -97.975907	26.129736 -97.974030
S Bridge Ave	1	1253	Weslaco	26.127178 -97.981991	26.133618 -97.982123
E 28 TH ST	1	3900	Weslaco	26.128861 -97.974028	26.128852 -97.975880
San Juana St	1	3901	Weslaco	26.128847 -97.975913	26.130552 -97.975947
S Bridge Ave	1	1339	Weslaco	26.121368 -97.981889	26.127167 -97.981995
E 26 TH ST	1	1335	Weslaco	26.130612 -97.974047	26.130565 -97.977469
E 25 TH ST	1	1391	Weslaco	26.131439 -97.977521	26.131496 -97.974278
S Airport Rd	1	1358	Weslaco	26.119553 -97.973820	26.126540 -97.973942
E 24 TH ST	1	1390	Weslaco	26.132224 -97.974899	26.132181 -97.977541
A C ST	1	1407	Weslaco	26.132477 -97.977575	26.130481 -97.977521
S Airport Dr	1	1992	Weslaco	26.126570 -97.973944	26.133831 -97.975980
S Airport Rd	1	1366	Weslaco	26.131299 -97.974052	26.132598 -97.975170
E 22 Nd St	1	1359	Weslaco	26.134056 -97.966058	26.133946 -97.972745
Mile 5 1/2	1	1360	Weslaco	26.133939 -97.972940	26.133863 -97.975944
E 27th st	1	1399	Weslaco	26.129744 -97.982070	26.129573 -97.985397
S Oklahoma Ave	1	1420	Weslaco	26.129941 -97.994584	26.133460 -97.994665
Sinclair	1	1405	Weslaco	26.129687 -97.983896	26.129164 -97.983897
Sinclair	1	1406	Weslaco	26.129750 -97.983897	26.130063 -97.983913