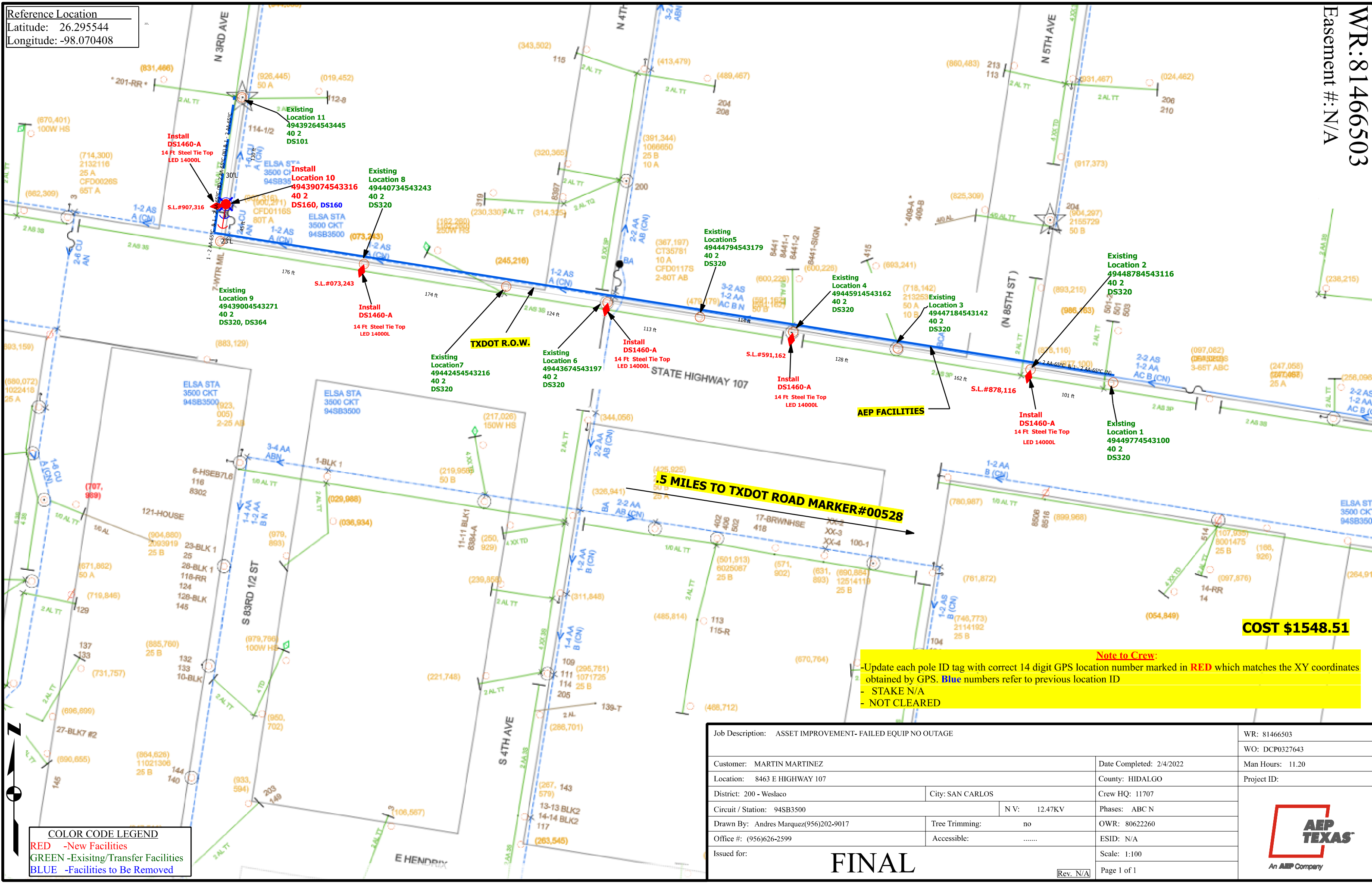


Reference Location
Latitude: 26.295544
Longitude: -98.070408



COST \$1548.51

Note to Crew:
 - Update each pole ID tag with correct 14 digit GPS location number marked in **RED** which matches the XY coordinates obtained by GPS. **Blue** numbers refer to previous location ID
 - STAKE N/A
 - NOT CLEARED

COLOR CODE LEGEND
 RED -New Facilities
 GREEN -Existing/Transfer Facilities
 BLUE -Facilities to Be Removed

Job Description: ASSET IMPROVEMENT- FAILED EQUIP NO OUTAGE		WR: 81466503	
Customer: MARTIN MARTINEZ		WO: DCP0327643	
Location: 8463 E HIGHWAY 107		Date Completed: 2/4/2022	
District: 200 - Weslaco		County: HIDALGO	
City: SAN CARLOS		Man Hours: 11.20	
Circuit / Station: 94SB3500		Project ID:	
N V: 12.47KV		Crew HQ: 11707	
Phases: ABC N		Tree Trimming: no	
Drawn By: Andres Marquez(956)202-9017		OWR: 80622260	
Office #: (956)626-2599		Accessible:	
ESID: N/A		Scale: 1:100	
Issued for:		Page 1 of 1	

FINAL

