



KYOCERA DOCUMENT SOLUTIONS AMERICA, INC.

DUNS Unique Entity ID 064465503	SAM Unique Entity ID UKMYUL2G6Z54	CAGE / NCAGE 65678
Purpose of Registration All Awards	Registration Status Active	Expiration Date Aug 27, 2022
Physical Address 225 Sand RD Fairfield, New Jersey 07004-1575 United States	Mailing Address PO Box 40008 Fairfield, New Jersey 07004 United States	

Business Information

Doing Business as (blank)	Division Name (blank)	Division Number (blank)
Congressional District New Jersey 11	State / Country of Incorporation California / United States	URL http://usa.kyoceradocumentsolutions.com

Registration Dates

Activation Date Aug 27, 2021	Submission Date Aug 27, 2021	Initial Registration Date Apr 3, 2002
---------------------------------	---------------------------------	--

Entity Dates

Entity Start Date Jan 1, 1973	Fiscal Year End Close Date Mar 31
----------------------------------	--------------------------------------

Immediate Owner

CAGE (blank)	Legal Business Name (blank)
-----------------	--------------------------------

Highest Level Owner

CAGE (blank)	Legal Business Name (blank)
-----------------	--------------------------------

Executive Compensation

Registrants in the System for Award Management (SAM) respond to the Executive Compensation questions in accordance with Section 6202 of P.L. 110-252, amending the Federal Funding Accountability and Transparency Act (P.L. 109-282). This information is not displayed in SAM. It is sent to USAspending.gov for display in association with an eligible award. Maintaining an active registration in SAM demonstrates the registrant responded to the questions.

Proceedings Questions

Registrants in the System for Award Management (SAM) respond to proceedings questions in accordance with FAR 52.209-7, FAR 52.209-9, or 2.C.F.R. 200 Appendix XII. Their responses are not displayed in SAM. They are sent to FAPIIS.gov for display as applicable. Maintaining an active registration in SAM demonstrates the registrant responded to the proceedings questions.

Exclusion Summary

Active Exclusions Records?

No

SAM Search Authorization

I authorize my entity's non-sensitive information to be displayed in SAM public search results:

Yes

Entity Types

Business Types

Entity Structure Corporate Entity (Not Tax Exempt)	Entity Type Business or Organization	Organization Factors (blank)
Profit Structure For Profit Organization		

Socio-Economic Types

Check the registrant's Repts & Certs, if present, under FAR 52.212-3 or FAR 52.219-1 to determine if the entity is an SBA-certified HUBZone small business concern. Additional small business information may be found in the SBA's Dynamic Small Business Search if the entity completed the SBA supplemental pages during registration.

Financial Information

Accepts Credit Card Payments Yes	Debt Subject To Offset No
EFT Indicator 0000	CAGE Code 65678
EFT Indicator 2010	CAGE Code 6S2A3
EFT Indicator 2011	CAGE Code 73DL6
EFT Indicator 2016	CAGE Code 7KCH3

Points of Contact

Electronic Business

✕ Millicent Richardson	Kyocera Document Solutions America Inc 225 Sand Road Fairfield, New Jersey 07004 United States
JOSEPH DOLCE	Kyocera Document Solutions America Inc 225 Sand Road Fairfield, New Jersey 07004 United States

Government Business

✕ Millicent Richardson	Kyocera Document Solutions America Inc 225 Sand Road Fairfield, New Jersey 07004 United States
JOSEPH DOLCE	Kyocera Document Solutions America Inc 225 Sand Road Fairfield, New Jersey 07004 United States

Service Classifications

NAICS Codes

Primary	NAICS Codes	NAICS Title
Yes	333316	Photographic And Photocopying Equipment Manufacturing
	423420	Office Equipment Merchant Wholesalers

Disaster Response

This entity does not appear in the disaster response registry.

Digital Copiers • Networked Copiers • Facsimiles • Laser Printers • Color Copiers • Wide Format Copiers • Sales • Service • Supplies

February 24, 2022

Proposal Prepared For
HIDALGO COUNTY URBAN PROGRAM

DIR CPO-4428

Attn: Dalila Alvarado

COPYSTAR CS-5004I

Digital Copier | Network Print/Scan System | Network Fax System 12

50 Copies Per Minute
10.1" Color Touch Screen Control Panel
Standard Duplex Unit
4 GB Ram Memory
32 GB SDD
320 GB HDD Hard Drive
17 Seconds Warm Up Time
*Document Box - *Digital storage*
Print Resolution Up 1200 x 1200 dpi
(PF-7150) Dual 1,500 Sheet Trays - *Letter only*
(DF-7120) 1k Finisher Staple

Bypass

Dual 500 Sheet Paper Drawers
150 Sheet Multi-Purpose Tray
225K Max Monthly Volume
Wireless Printing and Scanning
Apple AirPrint
Mopria Print
Mobile Printing
Data Security Kit
1,000 Access Codes
320 Dual Scan Processor (DP-7160)
AK-7120 Kit

*2 trays
L/Legal*

DIR LEASE INVESTMENT

COPYSTAR CS-5004i

36 Months \$ 183.88

SERVICE AGREEMENT

\$ 56.00 per Month

This service agreement is **open market** and covers FULL maintenance and replacement of any necessary parts and consumable supplies including Drum, Developer & Toner. The service agreement will exclude paper & staples only. The service agreement will cover up to 10,000 copies per month for the full term of the lease. Overages will bill monthly at \$.0058 per copy.

- > Free Installation.
- > No Property Taxes
- > No Documentation Fee
- > No Insurance Needed
- > No Freight Cost at end of term

Thank You,

Daniel Montano
Vice President



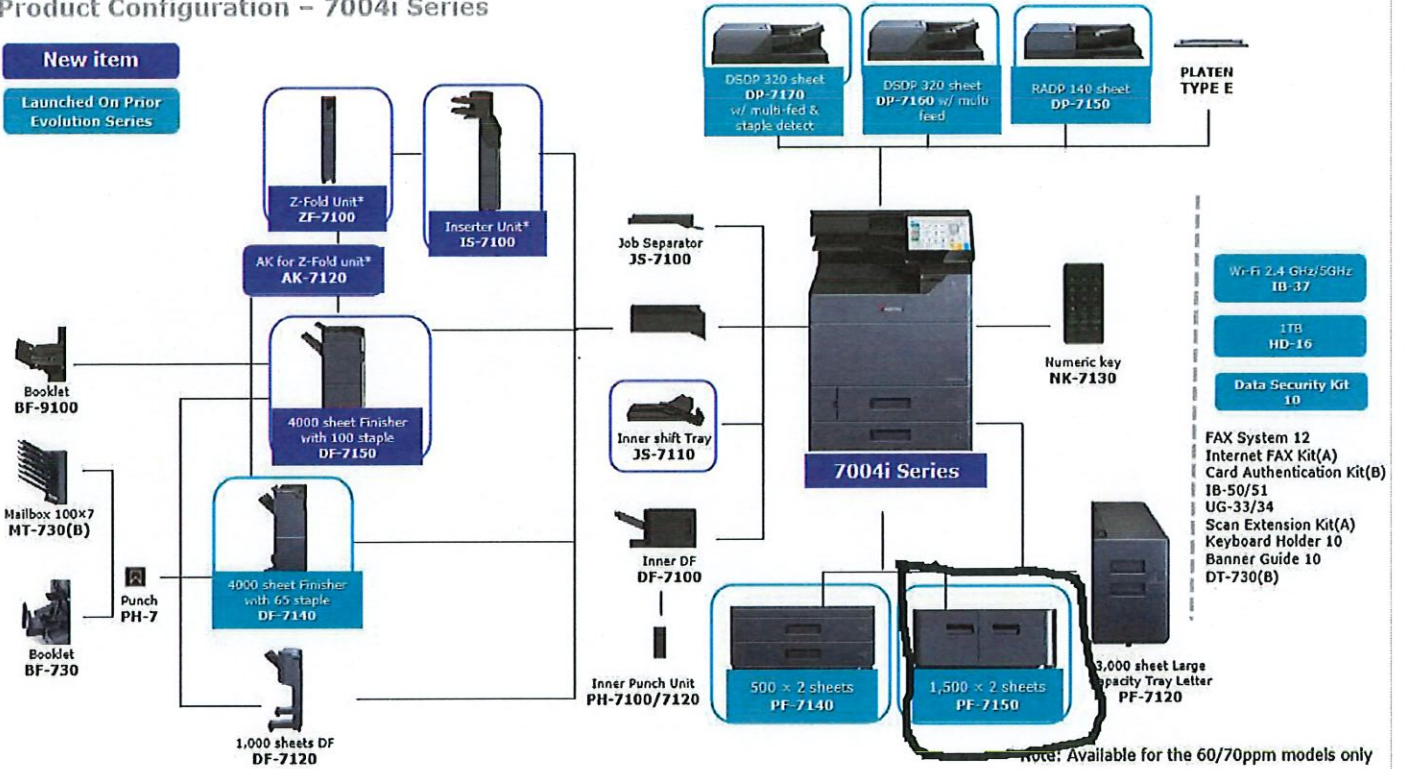
Authorized Signature for approval of proposal as stated above

Date

www.digitalrgv.com

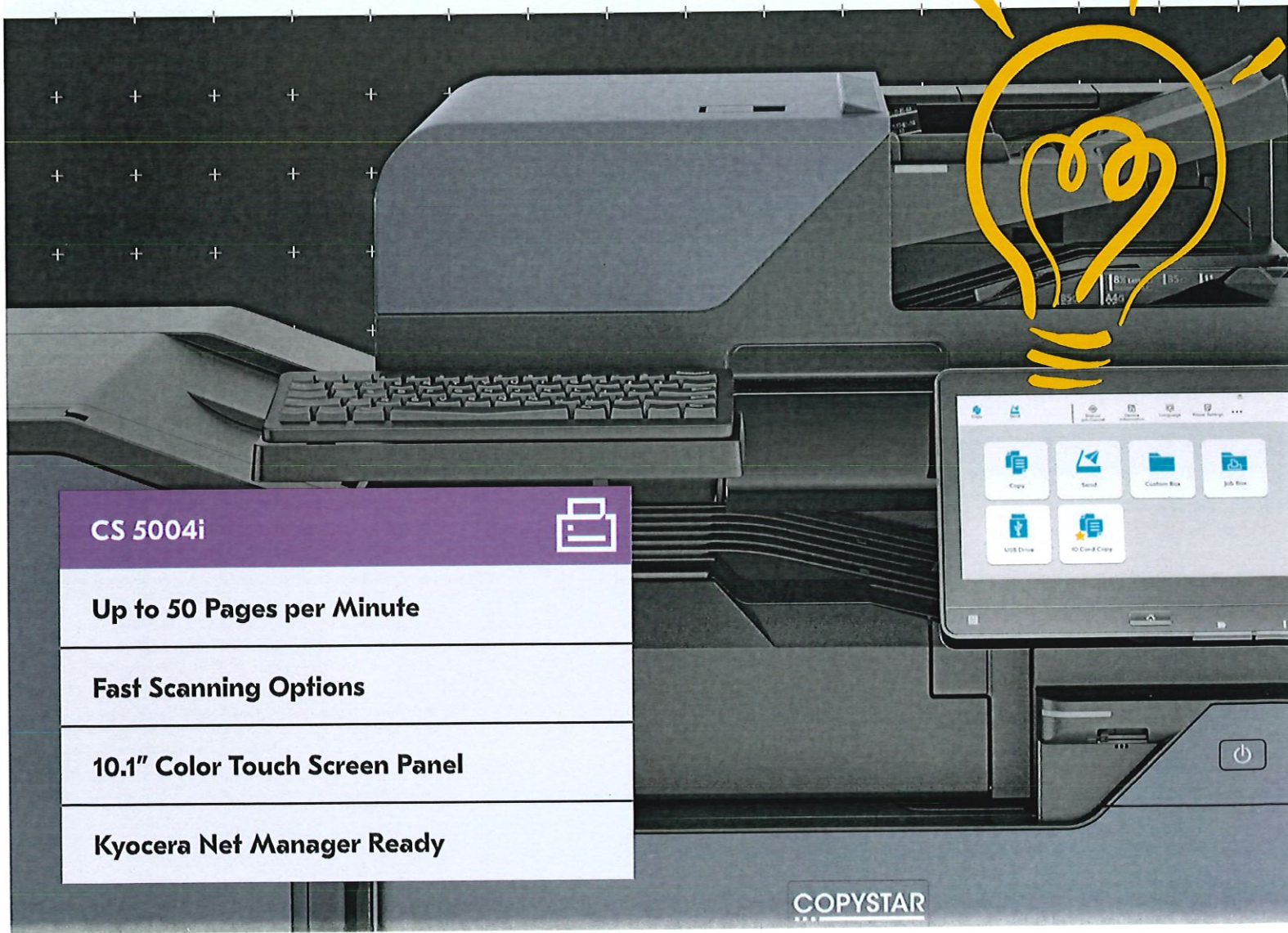
Kyocera 7004i/7054ci Evolution Series Product Configuration - 7004i Series

New item
Launched On Prior Evolution Series



Your Workplace Evolution

These monochrome additions to the Copystar Evolution Series are designed to keep your costs low and your efficiency at its highest. With the latest security compliance, rapid print and scan speeds, and a more engaging user experience, they will optimize your workflows and maximize productivity. Join the Evolution today and keep your business at the cutting edge!



CS 5004i



Up to 50 Pages per Minute

Fast Scanning Options

10.1" Color Touch Screen Panel

Kyocera Net Manager Ready

BASIC SPECIFICATIONS

Configuration: BW MFP - Print/Scan/Copy/Optional Fax

Speed: Letter: 50 ppm, Legal: 30 ppm, Ledger: 25 ppm (print only)

Warm Up Time: 17 seconds or less (power on)

First Page Out:

Copy: 3.7 seconds

Print: 4.3 seconds

Display: 10.1" Color Touch Screen Control Panel

Memory/Hard Disk Drive: 4GB RAM/32GB SSD/320GB HDD Standard, 1TB HDD (option)

Duplex: Standard Stackless Duplex supports Statement (5.5" x 8.5") to Ledger (12" x 18"), 16 lb. Bond - 142 lb. Index (60 - 256gsm)

Standard Output Tray: Statement - 12" x 18"/500-sheets; up to 12" x 48" Banner (single sheet)

Electrical Requirements: 120V, 60Hz, 12A;

220-240V, 50/60Hz, 7.2A

Typical Electricity Consumption (TEC): 120V: .63 kWh/week;

220V: .60 kWh/week

Dimensions: 23.7" W x 26.1" D x 31.1" H

Weight: 182 lbs

Maximum Monthly Duty Cycle: 225,000 Pages per Month

PAPER SUPPLY

Paper Capacity: Standard 1,150-sheets; Maximum 7,150-sheets

Standard Paper Sources: Dual 500-sheet Trays,

150-sheet MPT, Auto Selection/Switching

Standard Paper Size:

Tray 1 - 5.5" x 8.5" - 8.5" x 14" (statement to legal)

Tray 2 - 5.5" x 8.5" - 12" x 18", Custom Size

MPT: 5.5" x 8.5" - 12" x 18" (multiple); to 12" x 48" Banner

(single)

Optional Paper Sources:

PF-7140 Dual 500-sheet Tray Option - 5.5" x 8.5" - 12" x 18"

PF-7150 Dual 1,500-sheet Tray Option - 8.5" x 11"

PF-7120 3,000-sheet Large Capacity Tray Option - 8.5" x 11"

Paper Weight:

Trays/MPT: 14 lb. Bond - 166 lb. Index (52 - 300gsm)

Input Materials: Standard/Optional Trays: Plain, Bond, Recycled, Preprinted, Vellum, Color, Pre-Punched, Thick, Thin, High Quality, Letterhead, Envelope, Custom; MPT: Plain, Bond, Recycled, Preprinted, Vellum, Color, Pre-Punched, Thick, Thin, High Quality, Transparency (OHP), Coated, Index Tab, Label, Letterhead, Envelope, Custom

SECURITY SPECIFICATIONS

Local Authentication, Network Authentication, Encryption Communication (IPsec, HTTPS, TLS 1.3, LDAPs, SMTP/POP/FTPS over TLS, SNMPv3), TPM chipset (Trusted Platform Module), S/MIME, SCEP (auto certificate issuance/renewal), OCS/CRL (certificate validation), Secure Boot (firmware authenticity verification), Run Time Integrity Check, Data Security Kit 10 enhances IPsec communication (support for FIPS 140-2), HDD and Memory Overwrite (7x) Mode and HDD Data Encryption (256 bit), Common Criteria (ISO/IEC-15408/EAL2), IEEE 2600.2

PRINT SPECIFICATION

Standard Controller: ARM Cortex-A53/1.6GHz

PDLs/Emulations: PRESCRIBE, PCL6 (PCL-XL/PCL-5e), KPDL3 (P53), XPS, OPEN XPS, PDF; Optional (UG 34): IBM ProPrinter, Line Printer, LQ-850

Print Resolution: Up to 4800 x 1200 dpi

Fonts: KPDL3, PCL6, Bitmap

OS Compatibility: Windows: 8.1/10/Server 2012/

Server 2012 R2/Server 2016/Server 2019;

Mac OS X v10.0 or later; Chrome OS

Mobile Printing: Apple AirPrint®, Mopria®,

KYOCERA Mobile Print, KYOCERA MyPanel

Interfaces: Standard: 1000 Base-T/100-Base-Tx/10BASE-T

(IPv6, IPv4, IPsec), 802.3az ready, High-Speed USB 3.0,

4 USB 2.0 Host Interfaces, 2 Expansion Slots, IEEE 802.11b/g/n Wireless LAN (supports up to 98.5 feet); Optional: IEEE 802.11a/b/g/n/ac (IB-37 for 2.4/5GHz), 10/100/1000BaseTX (IB-50 for Dual NIC); IEEE 802.11b/g/n (IB-51 for Wireless LAN Interface (supports up to 328.1 feet))

Network Print and Supported Protocols: HTTPS, FTPS, SNMP v1/v2c/v3, Raw Port (Port 9100) TCP/IP, IPv4, IPv6, DHCP LPR, DNS, WSD Scan/Print

Drivers: KX Driver, PCL Mini Driver, KPDL Mini Driver, Network Fax Driver, TWAIN Driver, WIA Driver, Status Monitor, Common Profile, Output to PDF, Security Watermark, Super Resolution, Color Optimizer, MAC Driver, Chrome Print Driver, Linux Driver, KX Driver with Distributed Printing, Windows Inbox Driver, SANE Driver

Utilities: KYOCERA Net Viewer, KYOCERA Net Device Manager, Quick Setup, KX PRESCRIBE Macro Generator, ID Register, Software Management Service, Upgrade Studio, Web Package Maker, Removal Tool, Wi-Fi Setup Tool, PDF Direct Print, Command Center RX; Kyocera Net Manager (option)

SCAN SPECIFICATION

Scan Type: Color and Black & White Scanner

Scan Resolution: 600/400/300/200 dpi, 200 x 100 dpi,

200 x 400 dpi

File Formats: TIFF, JPEG, XPS, OpenXPS, PDF/A-2.0

(MMR/JPG Compression/High Compression PDF); Option:

Scan Extension Kit Text Searchable PDF; MS Office File

Connectivity/Supported Protocols: 10 BASE-T/100

BASE-TX/1000 BASE-T (IPv6, IPv4, IPsec) TCP/IP,

Hi-Speed USB 3.0

Scanning Functions: Scan-to-Folder (SMBv3), Scan-to-Email,

Scan-to-FTPS over TLS, Scan-to-USB, PDF Digital Signatures,

WSD Scan, DSM/SANE Scan, TWAIN Scan, Specified Color

Removal, Border Erase, Preview

Original Size: Up to 11" x 17" (Glass)

Drivers: TWAIN/WIA/DSM-SANE Driver/WSD Scan

OPTIONAL DOCUMENT PROCESSORS

Acceptable Originals: 5.5" x 8.5" - 11" x 17"

DP-7150: Reverse Auto Document Processor/140-sheets

Speed: Simplex: 80 ipm; Duplex: 48 ipm (BW/Color)

Weight: Simplex: 13 lb. Bond - 90 lb. Index (35 - 160gsm)

Duplex: 16 lb. - 32 lb. Bond (50 - 120gsm)

DP-7160 (with multi-feed detection):

Dual Scan Document Processor/320-sheets

Speed: Simplex: 137 ipm; Duplex: 274 ipm (BW/Color)

Weights: Simplex: 13 lb. Bond - 120 lb. Index (35 - 220gsm)

Duplex: 16 lb. - 120 lb. Index (50 - 220gsm)

DP-7170 (with multi-feed and staple detection):

Dual Scan Document Processor/320-sheets

Speed: Simplex: 137 ipm; Duplex: 274 ipm (BW/Color)

Weights: Simplex: 13 lb. Bond - 120 lb. Index (35 - 220gsm)

Duplex: 16 lb. - 120 lb. Index (50 - 220gsm)

COPY SPECIFICATIONS

Copy Resolution: 600 x 600 dpi

Image Mode: Text, Photo, Text/Photo, Graphic/Map

Continuous Copy: 1 - 9,999

Additional Features: Auto Magnification, Auto Paper Select,

Combine Copy, Mirror Image, Rotate Copy, Border Erase,

Split Copy, Margin Shift, Page Number, Form Overlay,

Blank Page Skip, Specified Color Removal, Proof Copy,

Preview, ID Card Copy

Job Management: 1,000 User Codes, Job Build, Shortcut Keys,

Repeat Copy

Magnification/Zoom: Full Size, 4 Reduction, 4 Enlargement

Preset Ratios: 25 - 400% in 1% Step Increments

Document Box: Custom/Job/USB Drive Box, Fax Box

(w/option)

OPTIONAL FAX SPECIFICATIONS

Fax Type: Fax System 12 (option)

Type/Data Compression: G3 Fax/MMR, MR, MH, JBIG

Transmission Speed/Modem Speed: Less than

3 seconds/33.6 Kbps

Fax Memory: Standard 170 MB

Driver: Network Fax Driver

Fax Functions: Network Fax, Duplex Transmission and

Reception, Encrypted Transmission and Reception,

Polling Transmission and Reception, Broadcast,

Fax Server Integration, Fax Dedicated Paper Feed Tray,

Fax Forwarding to email or file

arding to email or file

SOLUTIONS AND SERVICES

Remote Management

Kyocera Fleet Services ready! A highly secure cloud-based monitoring solution that offers real-time visibility into your fleet. Optimize device uptime and be notified when to replenish supplies. Streamline billing with seamless 3rd party application integration, allowing you to focus solely on your business.

Printing Software

Cost Control & Security

Cloud & Mobile

Printer Management

Content Services

Scan & Connect

Intelligent Process Automation

Enterprise Content Management

IT Solutions

Technology Solutions

Including solutions for Cloud and Data Centers

Network Infrastructure

Cybersecurity Solutions

Collaboration Solutions

Consulting Services

Including IT Health Check

CIO as a Service

Healthcare Compliance

Backup and Recovery Planning

Professional Services

Including Design and Architecture

Project Implementation

Project Management

Managed Services

Including Help Desk Services

Retainer Services and On-site Support

Output & Finishing Options³

OPTIONAL 250 SHEET INNER SHIFT TRAY JS-7110

Stack Capacity: 250-sheets
Paper Size: 8.5" x 11" – 11" x 17"
Paper Weight: 14 lb. Bond – 166 lb. Index (52 – 300gsm)

OPTIONAL 500 SHEET INTERNAL FINISHER DF-7100₄

Stack/Staple Capacity: 500-sheets/50-sheets
Paper Size: 5.5" x 8.5" – 12" x 18"
Paper Weight: 14 lb. Bond – 166 lb. Index (52 – 300gsm)
Edge Staple Position: 3 Positions: Front: 1 Staple, Edge: 1 Staple, Face: 2 Staples
Optional Punch: PH-7100 2/3 Hole Punch Unit, supports 5.5" x 8.5" – 12" x 18"; 14 lb. Bond – 166 lb. Index
Dimensions: 19.4" W x 21" D x 6.9" H

OPTIONAL 1,000 SHEET FINISHER DF-7120₄

Stack/Staple Capacity: Main Tray: 1,000-sheets/50-sheets (up to 24 lb. Bond [90gsm])
Paper Size: 5.5" x 8.5" – 12" x 18"
Paper Weight: 14 lb. Bond – 166 lb. Index (52 – 300gsm)
Edge Staple Position: 3 Positions: Top Left, Bottom Left, Center Bind
Optional Punch: PH-7A 2/3 Hole Punch Unit, supports 5.5" x 8.5" – 12" x 18"; 14 lb. Bond – 166 lb. Index
Dimensions: 21.6" W x 24.4" D x 41.3" H

OPTIONAL 4,000 SHEET FINISHER DF-7140₄

Stack/Staple Capacity: Main Tray (A): 4,000-sheets; Sub Tray (B): 200-sheets/65-sheets (24 lb. Bond [90gsm])
Paper Size: 5.5" x 8.5" – 12" x 18"
Paper Weight: 14 lb. Bond – 166 lb. Index (52 – 300gsm)
Edge Staple Position: 3 Positions: Top Left, Bottom Left, Center Bind
Optional Punch: PH-7A 2/3 Hole Punch Unit, supports 5.5" x 8.5" – 12" x 18"; 14 lb. Bond – 166 lb. Index
Dimensions: 29" W x 26" D x 42" H

Optional Booklet Folder/Trifold Unit BF-730; (DF-7140)

Booklet Folder: supports 8.5" x 11", 8.5" x 14", 11" x 17"
Fold Booklet (staple): 16 lb. – 24 lb. Bond (60 – 90gsm) 20-sheets; 25 lb. – 28 lb. Bond (91 – 105gsm) 13-sheets; Higher than 28 lb. Bond (Higher than 105 gsm) 1-sheet
Fold Booklet (no staple): 16 lb. – 24 lb. Bond (60 – 90gsm) 5-sheets; 25 lb. Bond – 72 lb. Index (91 – 120gsm) 3-sheets; 32 lb. Bond – 110 lb. Cover (121 – 256gsm) 1-sheet
Trifold: supports 8.5" x 11" only: 16 lb. – 24 lb. Bond (60 – 90gsm) 5-sheets; 25 lb. Bond – 72 lb. Index (91 – 120gsm) 3-sheets

Optional Multi-Bin Mailbox MT-730(B); (DF-7140)

7 Trays; supports: 16 lb. Bond – 90 lb. Index (60 – 163gsm);
Stack Capacity per bin: 100-sheets: 5.5" x 8.5", 8.5" x 11"; 50-sheets: 8.5" x 14", 11" x 17"

OPTIONAL 4,000 SHEET FINISHER DF-7150₄

Stack/Staple Capacity: Main Tray (A): 4,000-sheets; Sub Tray (B): 200-sheets/100-sheets (up to 20lb. Bond [80gsm])
Paper Size: 5.5" x 8.5" – 12" x 18"
Paper Weight: 14 lb. Bond – 166 lb. Index (52 – 300gsm)
Edge Staple Position: 3 Positions: Top Left, Bottom Left, Center Bind
Optional Punch: PH-7A 2/3 Hole Punch Unit, Supports 5.5" x 8.5" – 12" x 18"; 14 lb. Bond – 166 lb. Index
Dimensions: 29" W x 26" D x 42" H

Optional Booklet Folder/Trifold Unit BF-9100; (DF-7150)

Booklet Folder: supports 8.5" x 11", 8.5" x 14", 11" x 17"
Fold Booklet (staple): 14 lb. – 24 lb. Bond (52 – 90gsm) 20-sheets; 25 lb. – 28 lb. Bond (91 – 105gsm) 13-sheets; Higher than 28 lb. Bond (Higher than 105 gsm) 1-sheet
Fold Booklet (no staple): 14 lb. – 24 lb. Bond (52 – 90gsm) 5-sheets; 24 lb. Bond – 28 lb. Index (91 – 105gsm) 3-sheets; 28 lb. Bond – 140 lb. Index (106 – 256gsm) 1-sheet
Trifold: supports 8.5" x 11" only: 14 lb. – 24 lb. Bond (52 – 90gsm) 5-sheets; 25 lb. Bond – 28 lb. Index (91 – 105gsm) 3-sheets

ADDITIONAL OPTIONS

AK-7110 Bridge Unit Attachment Kit, JS-7100 Job Separator, HD-16 Large Capacity HDD (1TB), Banner Guide 10, Internet Fax Kit (A), Card Authentication Kit (B), Data Security Kit 10, Dual NIC (IB-50), Extended Range Wireless LAN NIC (IB-51), Thin Print option (UG-33), Printer Emulation option (UG-34), DT-730(B) Document Tray, Scan Extension Kit (A) for Text Searchable PDF; MS Office File, Keyboard Holder 10, Numeric Keypad (NK-7130), Cabinet Stand

¹ Requires PF-7140

² Only 1 Document Processor can be installed

³ Only 1 Output Option can be installed

⁴ Requires Bridge Unit Attachment Kit (AK-7110)

Specifications and design are subject to change without notice. For the latest on connectivity visit copystar.com. CS, PRESCRIBE, Kyocera Net Manager, Kyocera Net Viewer, Kyocera Device Manager, PDF Direct Print, Command Center RX, and KX Driver are trademarks of The Kyocera Companies. Mac OS and AirPrint are trademarks of Apple, Inc. Mopria is a trademark of Mopria Alliance, Inc. Windows is a trademark of Microsoft, Inc. All other trademarks are the property of their respective owners.



Copystar Partner

KYOCERA Document Solutions America
 225 Sand Road, PO Box 40008
 Fairfield, New Jersey 07004-0008, USA
 Tel: 973-808-8444

COPYSTAR

KYOCERA TECHNOLOGY

copystar.com

“Satisfaction Guarantee Policy”

Digital Office Systems ensures customer satisfaction by offering our clients the “Best Service in the Industry.”

➤ **“Digital Satisfaction Guarantee”**

Digital Office Systems will replace the equipment with an equal or comparable machine, providing sale and service is rendered by Digital Office Systems and Manufacturers Engineer deems equipment no repairable.

➤ **“KYOCERA NET VIEWER”**

Digital will install for free this comprehensive network management tool used to monitor, maintain, and update all output devices locally and remotely.

➤ **“Training and Support”**

We at Digital Office Systems provide a training specialist to educate and provide ongoing training and support for your employees. In how to be more productive and efficient using our products at no additional cost, Personalizing each training.

➤ **“To Better Service Our Clients”**

Digital Office Systems has six (6) technicians trained to service all major brands of Digital copiers, B/W printers, Color copiers, Color printers and Document Management in the South Texas Region.

➤ **“Guaranteed Response time service calls”**

“(4 hours minimum – 6 hours maximum GUARANTEED!)”

Anywhere in the Rio Grande Valley.

➤ **“Management Open Door Policy”**

Management will closely monitor ALL “Satisfaction Issues” without hiding behind paperwork and clauses.

➤ **“Personal Attention to All “Satisfaction Issues”**

Your solutions advisor as well as upper management will attend “Satisfaction Issues” that may arise.

➤ **“On site checkups by Management Team Member”**

We will periodically perform check ups on equipment and service quality.



February 24, 2022

Proposal Prepared For
HIDALGO COUNTY URBAN PROGRAM
 DIR CPO-4428
 Attn: Dalila Alvarado
COPYSTAR CS-4054CI
 Digital Copier | Network Print/Scan System

40 Copies Per Minute
 10.1" Color Touch Screen Control Panel
 Standard Duplex Unit
 4 GB Ram Memory
 32 GB SDD
 320 GB HDD Drive
 17 Seconds Warm Up Time
 *Document Box
 Print Resolution Up 4800 x 1200 dpi
 → (PF-7140) Dual 500 Sheet Trays
 (DF-7120) 1k Finisher Staple

Dual 500 Sheet Paper Drawers
 150 Sheet Multi-Purpose Tray
 175K Max Monthly Volume
 Wireless Printing and Scanning
 Apple AirPrint
 Mopria Print
 Mobile Printing
 Data Security Kit 10
 1,000 Access Codes
 320 Dual Scan Processor (DP-7160)
 AK-7110 Kit

DIR LEASE INVESTMENT

COPYSTAR CS-4053ci

36 Months \$ 205.18

SERVICE AGREEMENT

This service agreement is **open market** and covers FULL maintenance and replacement of any necessary parts and consumable supplies including Drum, Developer & Toner. The service agreement will exclude paper & staples only.

Black/White Copies
\$ 57.60 per Month

The service agreement will cover up to 12,000 copies per month for the full term of the lease. Overages will bill monthly at \$.0057 per black copy.

Color Copies
\$ 282.10 per Month

The service agreement will cover up to 7,000 copies per month for the full term of the lease. Overages will bill monthly at \$.045 per color copy.

- Free Installation.
- No Property Taxes
- No Documentation Fee
- No Insurance Needed
- No Freight Cost at end of term

Thank You,

Daniel Montano
 Vice President



Authorized Signature for approval of proposal as stated above _____ Date _____

COPYSTAR

KYOCERA TECHNOLOGY

copystar.com

Your Workplace Evolution, in Color

The Copystar Evolution Series continues to grow with the addition of a new range of high-impact color A3 MFPs. These robust devices boast industry-leading technology and security, along with outstanding print and scan speeds, to ensure impeccable quality output every single time. Join the Evolution today and add a new dimension to your business.



CS 5054ci



Up to 50 Pages per Minute

Fast Scanning Options

10.1" Color Touch Screen Panel

Kyocera Net Manager Ready

COPYSTAR

BASIC SPECIFICATIONS

Configuration: Color MFP - Print/Scan/Copy/Optional Fax
Speed: Letter: 50 ppm, Legal: 30 ppm, Ledger: 25 ppm (print only)

Warm Up Time: 17 seconds or less (power on)

First Page Out:

Copy: 3.7 seconds BW, 4.8 seconds Color

Print: 4.3 seconds BW, 5.4 seconds Color

Display: 10.1" Color Touch Screen Control Panel

Memory/Hard Disk Drive: 4GB RAM/32GB SSD/

320GB HDD Standard, 1TB HDD (option)

Duplex: Standard Stackless Duplex supports Statement (5.5" x 8.5") to Ledger (12" x 18"), 16 lb. Bond - 142 lb. Index (60 - 256gsm)

Standard Output Tray: Statement - 12" x 18"/500-sheets; up to 12" x 48" Banner (single sheet)

Electrical Requirements: 120V, 60Hz, 12A;

220-240V, 50/60Hz, 7.2A

Typical Electricity Consumption (TEC): 120V: .66 kWh/week;

220V: .63 kWh/week

Dimensions: 23.7" W x 26.1" D x 31.1" H

Weight: 209.4 lbs

Maximum Monthly Duty Cycle: 225,000 Pages per Month

PAPER SUPPLY

Paper Capacity: Standard 1,150-sheets; Maximum 7,150-sheets

Standard Paper Sources: Dual 500-sheet Trays,

150-sheet MPT, Auto Selection/Switching

Standard Paper Size:

Tray 1 - 5.5" x 8.5" - 8.5" x 14" (statement to legal)

Tray 2 - 5.5" x 8.5" - 12" x 18", Custom Size

MPT: 5.5" x 8.5" - 12" x 18" (multiple); to 12" x 48" Banner

(single)

Optional Paper Sources:

PF-7140 Dual 500-sheet Tray Option - 5.5" x 8.5" - 12" x 18"

PF-7150 Dual 1,500-sheet Tray Option - 8.5" x 11"

PF-7120 3,000-sheet Large Capacity Tray Option - 8.5" x 11"

Paper Weight:

Trays/MPT: 14 lb. Bond - 166 lb. Index (52 - 300gsm)

Input Materials: Standard/Optional Trays: Plain, Bond, Recycled, Preprinted, Vellum, Color, Pre-Punched, Thick, Thin, High Quality, Letterhead, Envelope, Custom; MPT: Plain, Bond, Recycled, Preprinted, Vellum, Color, Pre-Punched, Thick, Thin, High Quality, Transparency (OHP), Coated, Index Tab, Label, Letterhead, Envelope, Custom

SECURITY SPECIFICATIONS

Local Authentication, Network Authentication, Encryption Communication (IPsec, HTTPS, TLS 1.3, SMTP/POP/FTPS over TLS, SNMPv3), TPM chipset (Trusted Platform Module), S/MIME, SCEP (auto certificate issuance/renewal), OCSP/CRL (certificate validation), Secure Boot (firmware authenticity verification), Run Time Integrity Check, Data Security Kit 10 enhances IPsec communication (support for FIPS 140-2), HDD and Memory Overwrite (7x) Mode and HDD Data Encryption (256 bit), Common Criteria (ISO/IEC-15408/EAL2), IEEE 2600.2

PRINT SPECIFICATION

Standard Controller: ARM Cortex-A53/1.6GHz

PDLs/Emulations: PRESCRIBE, PCL6 (PCL-XL/PCL-5e), KPDL3

(PS3), XPS, OPEN XPS, PDF; Optional (UG 34): IBM ProPrinter,

Line Printer, LQ-850

Print Resolution: Up to 4800 x 1200 dpi

Fonts: KPDL3, PCL6, Bitmap

OS Compatibility: Windows: 8.1/10/Server 2012/Server 2013

R2/Server 2016/Server 2019; Mac OS X v10.0 or later;

Chrome OS

Mobile Printing: Apple AirPrint®, Mopria®,

KYOCERA Mobile Print, KYOCERA MyPanel

Interfaces: Standard: 1000 Base-T/100-Base-Tx/10BASE-T

(IPv6, IPv4, IPsec), 802.3az ready, High-Speed USB 3.0,

4 USB 2.0 Host Interfaces, 2 Expansion Slots,

IEEE 802.11b/g/n Wireless LAN (supports up to 98.5 feet);

Optional: IEEE 802.11a/b/g/n/ac (11-37 for 2.4/5GHz), 10/100/1000BaseTX (10-50 for Dual NIC); IEEE 802.11b/g/n (11-51 for Wireless LAN Interface (supports up to 328.1 feet))

Network Print and Supported Protocols: HTTPS, FTPS, SNMP v1/v2c/v3, Raw Port (Port 9100) TCP/IP, IPv4, IPv6, DHCP LPR, DNS, WSD Scan/Print

Drivers: KX Driver, PCL Mini Driver, KPDL Mini Driver, Network Fax Driver, TWAIN Driver, WIA Driver, Status Monitor, Common Profile, Output to PDF, Security Watermark, Super Resolution, Color Optimizer, MAC Driver, Chrome Print Driver, Linux Driver, KX Driver with Distributed Printing, Windows Inbox Driver, SANE Driver

Utilities: KYOCERA Net Viewer, KYOCERA Net Device Manager, Quick Setup, KX PRESCRIBE Macro Generator, ID Register, Software Management Service, Upgrade Studio, Web Package Maker, Removal Tool, Wi-Fi Setup Tool, PDF Direct Print, Command Center RX; Kyocera Net Manager (option)

SCAN SPECIFICATION

Scan Type: Color and Black & White Scanner

Scan Resolution: 600/400/300/200 dpi, 200 x 100 dpi,

200 x 400 dpi

File Formats: TIFF, JPEG, XPS, OpenXPS, PDF/A-2.0

(MMR/JPG Compression/High Compression PDF);

Option: Scan Extension Kit Text Searchable PDF; MS Office File

Connectivity/Supported Protocols: 10 BASE-T/100

BASE-TX/1000 BASE-T (IPv6, IPv4, IPsec) TCP/IP,

Hi-Speed USB 3.0

Scanning Functions: Scan-to-Folder (SMBv3), Scan-to-Email,

Scan-to-FTPS over TLS, Scan-to-USB, WSD Scan,

DSM/SANE Scan, TWAIN Scan, Specified Color Removal,

Border Erase, Preview, PDF Digital Signatures

Original Size: Up to 11" x 17" (Glass)

Drivers: TWAIN/WIA/DSM-SANE Driver/WSD Scan

OPTIONAL DOCUMENT PROCESSORS

Acceptable Originals: 5.5" x 8.5" - 11" x 17"

DP-7150: Reverse Auto Document Processor/140-sheets

Speed: Simplex: 80 ipm; Duplex: 48 ipm (BW/Color)

Weight: Simplex: 13 lb. Bond - 90 lb. Index (35 - 160gsm)

Duplex: 16 lb. - 32 lb. Bond (50 - 120gsm)

DP-7160 (with multi-feed detection):

Dual Scan Document Processor/320-sheets

Speed: Simplex: 137 ipm; Duplex: 274 ipm (BW/Color)

Weights: Simplex: 13 lb. Bond - 120 lb. Index (35 - 220gsm)

Duplex: 16 lb. - 120 lb. Index (50 - 220gsm)

DP-7170 (with multi-feed and staple detection):

Dual Scan Document Processor/320-sheets

Speed: Simplex: 137 ipm; Duplex: 274 ipm (BW/Color)

Weights: Simplex: 13 lb. Bond - 120 lb. Index (35 - 220gsm)

Duplex: 16 lb. - 120 lb. Index (50 - 220gsm)

COPY SPECIFICATIONS

Copy Resolution: 600 x 600 dpi

Image Mode: Text, Photo, Text/Photo, Graphic/Map

Continuous Copy: 1 - 9,999

Additional Features: Auto Magnification, Auto Paper Select,

Combine Copy, Mirror Image, Rotate Copy, Border Erase,

Split Copy, Margin Shift, Page Number, Form Overlay,

Blank Page Skip, Specified Color Removal, Proof Copy,

Preview, ID Card Copy

Job Management: 1,000 User Codes, Job Build, Shortcut Keys,

Repeat Copy

Magnification/Zoom: Full Size, 4 Reduction, 4 Enlargement

Preset Ratios: 25 - 400% in 1% Step Increments

Document Box: Custom/Job/USB Drive Box, Fax Box

(w/option)

OPTIONAL FAX SPECIFICATIONS

Fax Type: Fax System 12 (option)

Type/Data Compression: G3 Fax/MMR, MR, MH, JBIG

Transmission Speed/Modem Speed: Less than

3 seconds/33.6 Kbps

Fax Memory: Standard 170 MB

Driver: Network Fax Driver

Fax Functions: Network Fax, Duplex Transmission and

Reception, Encrypted Transmission and Reception,

Polling Transmission and Reception, Broadcast,

Fax Server Integration, Fax Dedicated Paper Feed Tray,

Fax Forwarding to email or file

SOLUTIONS AND SERVICES**Remote Management**

Kyocera Fleet Services ready! A highly secure cloud-based monitoring solution that offers real-time visibility into your fleet. Optimize device uptime and be notified when to replenish supplies. Streamline billing with seamless 3rd party application integration, allowing you to focus solely on your business.

Printing Software

Cost Control & Security

Cloud & Mobile

Printer Management

Content Services

Scan & Connect

Intelligent Process Automation

Enterprise Content Management

IT Solutions

Technology Solutions

Including solutions for Cloud and Data Centers

Network Infrastructure

Cybersecurity Solutions

Collaboration Solutions

Consulting Services

Including IT Health Check

CIO as a Service

Healthcare Compliance

Backup and Recovery Planning

Professional Services

Including Design and Architecture

Project Implementation

Project Management

Managed Services

Including Help Desk Services

Retainer Services and On-site Support

Output & Finishing Options³

OPTIONAL 250 SHEET INNER SHIFT TRAY JS-7100

Stack Capacity: 250-sheets
Paper Size: 8.5" x 11" – 11" x 17"
Paper Weight: 14 lb. Bond – 166 lb. Index (52 – 300gsm)

OPTIONAL 500 SHEET INTERNAL FINISHER DF-7100₄

Stack/Staple Capacity: 500-sheets/50-sheets
Paper Size: 5.5" x 8.5" – 12" x 18"
Paper Weight: 14 lb. Bond – 166 lb. Index (52 – 300gsm)
Edge Staple Position: 3 Positions: Front: 1 Staple, Edge: 1 Staple, Face: 2 Staples
Optional Punch: PH-7100 2/3 Hole Punch Unit, supports 5.5" x 8.5" – 12" x 18"; 14 lb. Bond – 166 lb. Index
Dimensions: 19.4" W x 21" D x 6.9" H

OPTIONAL 1,000 SHEET FINISHER DF-7120₄

Stack/Staple Capacity: Main Tray: 1,000-sheets/50-sheets (up to 24 lb. Bond [90gsm])
Paper Size: 5.5" x 8.5" – 12" x 18"
Paper Weight: 14 lb. Bond – 166 lb. Index (52 – 300gsm)
Edge Staple Position: 3 Positions: Top Left, Bottom Left, Center Bind
Optional Punch: PH-7A 2/3 Hole Punch Unit, supports 5.5" x 8.5" – 12" x 18"; 14 lb. Bond – 166 lb. Index
Dimensions: 21.6" W x 24.4" D x 41.3" H

OPTIONAL 4,000 SHEET FINISHER DF-7140₄

Stack/Staple Capacity: Main Tray (A): 4,000-sheets; Sub Tray (B): 200-sheets/65-sheets (up to 24 lb. Bond [90gsm])
Paper Size: 5.5" x 8.5" – 12" x 18"
Paper Weight: 14 lb. Bond – 166 lb. Index (52 – 300gsm)
Edge Staple Position: 3 Positions: Top Left, Bottom Left, Center Bind
Optional Punch: PH-7A 2/3 Hole Punch Unit, supports 5.5" x 8.5" – 12" x 18"; 14 lb. Bond – 166 lb. Index
Dimensions: 29" W x 26" D x 42" H

Optional Booklet Folder/Trifold Unit BF-730; (DF-7140)

Booklet Folder: supports 8.5" x 11", 8.5" x 14", 11" x 17"
Fold Booklet (staple): 16 lb. – 24 lb. Bond (60 – 90gsm)
20-sheets; 25 lb. – 28 lb. Bond (91 – 105gsm) 13-sheets;
Higher than 28 lb. Bond (Higher than 105 gsm) 1-sheet
Fold Booklet (no staple): 16 lb. – 24 lb. Bond (60 – 90gsm)
32 lb. Bond – 110 lb. Cover (121 – 256gsm) 1-sheet
Trifold: supports 8.5" x 11" only; 16 lb. – 24 lb. Bond (60 – 90gsm) 5-sheets; 25 lb. Bond – 72 lb. Index (91 – 120gsm) 3-sheets (91 – 120gsm) 3-sheets

Optional Multi-Bin Mailbox MT-730(B); (DF-7140)

7 Trays; supports: 16 lb. Bond – 90 lb. Index (60 – 163gsm);
Stack Capacity per bin: 100-sheets: 5.5" x 8.5", 8.5" x 11";
50-sheets: 8.5" x 14", 11" x 17"

OPTIONAL 4,000 SHEET FINISHER DF-7150₄

Stack/Staple Capacity: Main Tray (A): 4,000-sheets; Sub Tray (B): 200-sheets/100-sheets (up to 20 lb. Bond [80gsm])
Paper Size: 5.5" x 8.5" – 12" x 18"
Paper Weight: 14 lb. Bond – 166 lb. Index (52 – 300gsm)
Edge Staple Position: 3 Positions: Top Left, Bottom Left, Center Bind
Optional Punch: PH-7A 2/3 Hole Punch Unit, supports 5.5" x 8.5" – 12" x 18"; 14 lb. Bond – 166 lb. Index
Dimensions: 29" W x 26" D x 42" H

Optional Booklet Folder/Trifold Unit BF-9100; (DF-7150)

Booklet Folder: supports 8.5" x 11", 8.5" x 14", 11" x 17"
Fold Booklet (staple): 14 lb. – 24 lb. Bond (52 – 90gsm)
20-sheets; 25 lb. – 28 lb. Bond (91 – 105gsm) 13-sheets;
Higher than 28 lb. Bond (Higher than 105 gsm) 1-sheet
Fold Booklet (no staple): 14 lb. – 24 lb. Bond (52 – 90gsm)
5-sheets; 24 lb. Bond – 28 lb. Index (91 – 105gsm) 3-sheets;
28 lb. Bond – 140 lb. Index (106 – 256gsm) 1-sheet

Trifold: supports 8.5" x 11" only; 14 lb. – 24 lb. Bond (52 – 90gsm) 5-sheets; 25 lb. Bond – 28 lb. Index (91 – 105gsm) 3-sheets

ADDITIONAL OPTIONS

AK-7110 Bridge Unit Attachment Kit, JS-7100 Job Separator, HD-16 Large Capacity HDD (1TB), Banner Guide 10, Internet Fax Kit (A), Card Authentication Kit (B), Data Security Kit 10, Dual NIC (1B-50), Extended Range Wireless LAN NIC (1B-51), Thin Print option (UG-33), Printer Emulation option (UG-34), DT-730(B) Document Tray, Scan Extension Kit (A) for Text Searchable PDF; MS Office File, Keyboard Holder 10, Numeric Keypad (NK-7130), Cabinet Stand, EFI Printing System 17 - Fiery Controller

¹ Requires PF-7140

² Only 1 Document Processor can be installed

³ Only 1 Output Option can be installed

⁴ Requires Bridge Unit Attachment Kit (AK-7110)

Specifications and design are subject to change without notice. For the latest on connectivity visit copystar.com. CS, PRESCRIBE, Kyocera Net Manager, Kyocera Net Viewer, Kyocera Device Manager, PDF Direct Print, Command Center RX, and KX Driver are trademarks of The Kyocera Companies. Mac OS and AirPrint are trademarks of Apple, Inc. Mopria is a trademark of Mopria Alliance, Inc. Windows is a trademark of Microsoft, Inc. All other trademarks are the property of their respective owners.



Copystar Partner

KYOCERA Document Solutions America
225 Sand Road, PO Box 40008
Fairfield, New Jersey 07004-0008, USA
Tel: 973-808-8444

COPYSTAR

KYOCERA TECHNOLOGY

copystar.com

Kyocera Document Solutions does not warrant that any specifications mentioned will be error-free. Specifications are subject to change without notice. Information is correct at time of going to press. All other brand and product names may be registered trademarks or trademarks of their respective holders and are hereby acknowledged.
©2021 KYOCERA Document Solutions America, Inc.

Maintenance Kits (MK Kits) & Supplies

Item	Description	Item Code	LDC	SRP
	600K MK Kit A - 4054ci/5054ci/6054ci (Black) <1>	1702YL0KLO		-
MK-8535B	600K MK Kit B - 4054ci/5054ci/6054ci/7054ci (C,M,Y) <2>	1702YL0KL1		-
MK-8545A	600K MK Kit A - 7054ci (Black) <3>	1702XC0KLO		-
WT-8500 - Container	Waste Toner Container (Yield: 40K @ 5%)	1902ND0UN0		-
WT-8500 - Case	Waste Toner Case [9/Case] (Yield: 40K @ 5%)	1902ND0UN0		-
SH-10	Staples (5,000pcs x 3 Cartridges/Case) <4>	1903JY0000		N/A
SH-12	Staples (5,000pcs x 3 Cartridges/Case) <5>	1903NB0UN0		
SH-14	Staples (5,000pcs x 5 Cartridges/Case) <6>	1903S80UN0		

<1> Includes Drum [Black]/Developer [Black]/Fuser/Transfer Unit & Paper Feed Rollers

<2> Includes Drums [CMY]/Developers [CMY]

<3> Includes Drum [Black]

<4> For the DF-7100 Finisher / DF-7120 Finisher / BF-730 Booklet + Trifolding Unit/ BF-9100 Booklet + Trifolding Unit

<5> For the DF-7140 Finisher (4,000-sheet/65-staple)

<6> For the DF-7150 Finisher (4,000-sheet/100-staple)

Kyocera 7004i/7054ci Evolution Series

Product Configuration - 7054ci Series

