

SAM Engineering and Surveying



Engineering Firm Reg # 10602 Surveying Firm Reg # 101416-00
200 S. 10th Street, Suite 1500, McAllen, Texas 78501 Phone: (956) 702-8880 Fax: (956) 702-8883

March 10, 2022

Roy Quintanilla, CPM
Hidalgo County Executive Office
505 S. McColl Rd., 2nd Floor
Edinburg, Texas 78539

Re: Professional Engineering Services- Contract C-21-0435-09-21
 Work Authorization No. 1 – Roadway & Bridge Inventory Assessment Study and Report(s)

Dear Mr. Quintanilla,

Attached for your review and approval is our request for Payment No. 6 for services rendered under Work Authorization No. 1, executed September 21, 2021. Services rendered are for work completed February 1, 2022, through February 28, 2022, on the above referenced project.

The following is a narrative of the progress for this period:

TASK DESCRIPTIONS

Phase 1: Preparatory	100%
-----------------------------	-------------

Preparatory Task 1-10

- Review County provided criteria, previous database, existing basemaps, and any other pertinent project documents.
- Prepare Project Management Plan for services during project duration.
- Prepare/Coordinate & Conduct Project Coordination meetings with Hidalgo County Officials.
- Prepare preliminary list of “new” roadways or developments in the County since previous GASB Report.
- Develop a database containing all assessment parameters.
- Develop a georeferenced mapping system to contain and display all the defects and their severity.
- Evaluate software/systems to provide the condition ratings for each roadway.

Project Management Task 1-10

41.67%

- Prepare and submit Monthly invoicing to County.
- Coordinate Project Segment Kickoff Meetings with each Precinct to establish the Precinct's priorities and identify primary points of contact.
- Coordinate with Hidalgo County Officials to obtain county road historical data (construction date, maintenance, etc.).
- Conduct Internal Meetings with all team members to ensure adherence to scope, schedule, and budget.
- Conduct Monthly meetings with each Precinct to review project progress, scope of work and adherence to schedule.
- Coordinate & attend field visits with Hidalgo County Officials throughout the duration of the project.
- Process RFI's and coordinate with Hidalgo County Officials as needed to request clarifications of street limits, conflicts in name, lack of access, etc.
- Conduct "Hold Points" (new task/scope of work) meetings and "Hands Down" (incident review) meetings as needed.
- Quality Control reviews of data processing.
- QA/QC of Database, PCI, GIS Files, GASB Report.

Phase 2: Roadway Inventory

36.47%

Data Collection

- Perform on-site assessment identifying all roadway elements such as Apparent ROW, Pavement Type and Width, Street Length, Sidewalks, and Striping.
- Collect georeferenced photographic evidence of all street signage including Speed Limits, Traffic Signs, Regulatory Signs, Warning Signs, Construction & Maintenance Signs, Service Signs, and Guide Signs.
- Assess the efficacy of Roadway Drainage.
- Provide a Condition Rating of all defects identified within County Roads.
- Daily quality control of field activities to ensure proper categorization.
- Capture and compile photographic evidence roadway conditions.

Update Database(s)

36.47%

- Populate and maintain the database containing all assessment parameters and Condition Rating Score.
- Provide an estimate for roadway improvements required and capitalize all existing roadways.
- Develop proposed improvement schedule/categories.
- Populate and maintain the georeferenced mapping system to contain and display all the defects and their severity.
- Develop and maintain a PCI based on field parameters.

SAM Engineering and Surveying



Engineering Firm Reg # 10602 Surveying Firm Reg # 101416-00
200 S. 10th Street, Suite 1500, McAllen, Texas 78501 Phone: (956) 702-8880 Fax: (956) 702-8883

Phase 3: GASB Report	12.50%
-----------------------------	---------------

GASB Report

- Prepare and present exhibits to county officials to include Database Reports, GIS Files, Management Plan, etc.
- Calculate historical value, prepare existing value and replacement, repair, and maintenance costs of county roads based on information collected.
- Identify optimal replacement and repair costs.
- Prepare final GASB-34 report to present to Hidalgo County Officials.

Direct Expenses	41.67%
------------------------	---------------

For your review and consideration attached is our Request for Payment No. 6.
Should you have any questions regarding this submittal please do not hesitate to call me at 956-702-8880.

Respectfully,

A handwritten signature in blue ink, appearing to read "SM", is written above the typed name.

Samuel D. Maldonado, P.E., R.P.L.S
Principal
SAMES, Inc.

Hidalgo County

PROFESSIONAL SERVICES
INSPECTION, MATERIAL TESTING AND CONSTRUCTION MANAGEMENT

REQUEST FOR PAYMENT NO: 6 (February 2022)
BILLING PERIOD: February 1, 2022 through February 28, 2022

CITY/COUNTY: Hidalgo County
PROJECT NAME: Hidalgo County Street Inventory
Work Authorization No. 1
ENG./ARCH.FIRM: SAMES, Inc. (SAM Engineering and Surveying)
ADDRESS: 200 S 10th ST. SUITE 1500
CITY/STATE: McAllen, Texas ZIP: 78501

Contract Amt. \$1,660,128.92

Contract#: C-21-0435-09-21


Purchase Order# 838888

SCOPE OF SERVICES	ESTIMATED AMOUNT	% COMPLETED TO DATE	TOTAL DUE	LESS PREVIOUS PAYMENTS	AMOUNT DUE THIS REQUEST
Phase 1: Preparatory Task 1-7, Preparatory.	\$180,706.00	100.00%	\$180,706.00	\$180,706.00	\$0.00
Task 1-10: Project Management.	\$245,226.00	41.67%	\$102,185.67	\$81,733.83	\$20,451.84
Phase 2: Roadway Inventory Task 1-6, Data Collection..	\$975,984.00	36.47%	\$355,941.36	\$267,322.02	\$88,619.34
Task 1-5, Update Database(s).	\$173,572.00	36.47%	\$63,301.71	\$47,558.73	\$15,742.98
Phase 3: GASB Report Task 1-4, GASB Report.	\$68,204.00	12.50%	\$8,525.50	\$0.00	\$8,525.50
Direct Expenses Mileage	\$16,436.92	41.67%	\$6,849.26	\$5,478.43	\$1,370.83
TOTAL	\$1,660,128.92	43.22%	\$717,509.50	\$582,799.01	\$134,710.49

Work Authorization Summary

<u>WA No.1</u>	<u>WA Amount</u>	<u>Previously Invoiced</u>	<u>Percentage Complete</u>	<u>Remaining Balance</u>
	\$1,660,128.92	\$582,799.01	43.22%	\$942,619.42


*Please attach supporting documents to this request.
I certify that the above is true and correct to the best of my knowledge.



Samuel D. Maldonado, P.E., R.P.L.S. Date
Principal
SAMES, Inc.



Memo

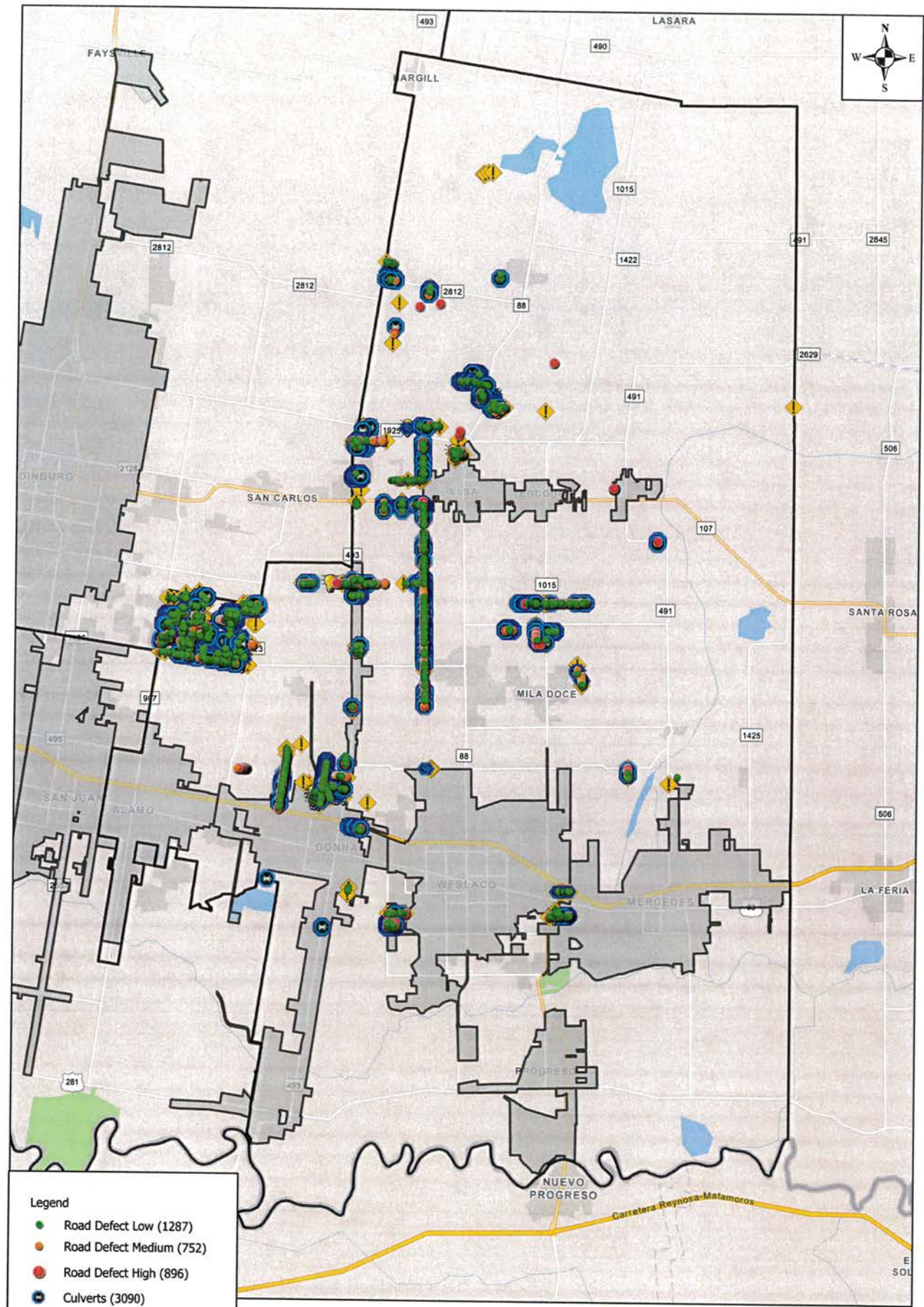
To: Roy Quintanilla, CPM
From: Samuel D. Maldonado, P.E., R.P.L.S. 
Date: March 10, 2022
Re: Hidalgo County Street Inventory Invoice #6

Please see below for the list of items accomplished from February 1, 2022, to February 28, 2022, on the Hidalgo County Street Inventory Project. Should you have any questions, please do not hesitate to reach out to me.

1. SAMES, Inc. held kick-off meeting with Precinct 4 on February 4, 2022.
2. SAMES, Inc. meeting with Hidalgo County Purchasing Department on February 9, 2022.
3. SAMES, Inc. Commissioners Court Presentation on February 22, 2022.
4. SAMES, Inc. held kick-off meeting with Precinct 2 on February 24, 2022.
5. SAMES, Inc. meeting with Hidalgo County IT Department on February 25, 2022.
6. Obtained Hidalgo County's updated Precincts' boundaries map.
7. Obtained Hidalgo County's Census Tracts shapefiles.
8. Obtained Precinct 2 map zones files.
9. Total mileage inspected within Hidalgo County: 872 miles/ 43.22% miles (See Exhibit A).
10. Performed on-site inspection identifying all road elements on inspected county roads on Precinct 1 and Precinct 3 (See Exhibit A).
11. Performed on-site inspection of New Subdivisions with expiring warranties:
 - I. Sunshine Estates No. 1 Subdivision no defects identified.
 - II. Viridian Estates Subdivision no defects identified.

12. Collected georeferenced photographic evidence of street signage on inspected county roads on Precincts 1 and 3. (See Exhibit A).
13. Collected the roadway drainage elements on inspected county roads on Precincts 1 and 3 (See Exhibit A).
14. Performed a condition rating of road defects on inspected county roads on Precincts 1 and 3 (See Exhibit A).
15. Captured and compiled photographic evidence of roadway conditions on inspected county roads on Precincts 1 and 3 (See Exhibit A).
16. Populated and maintained the database (See Exhibit B).

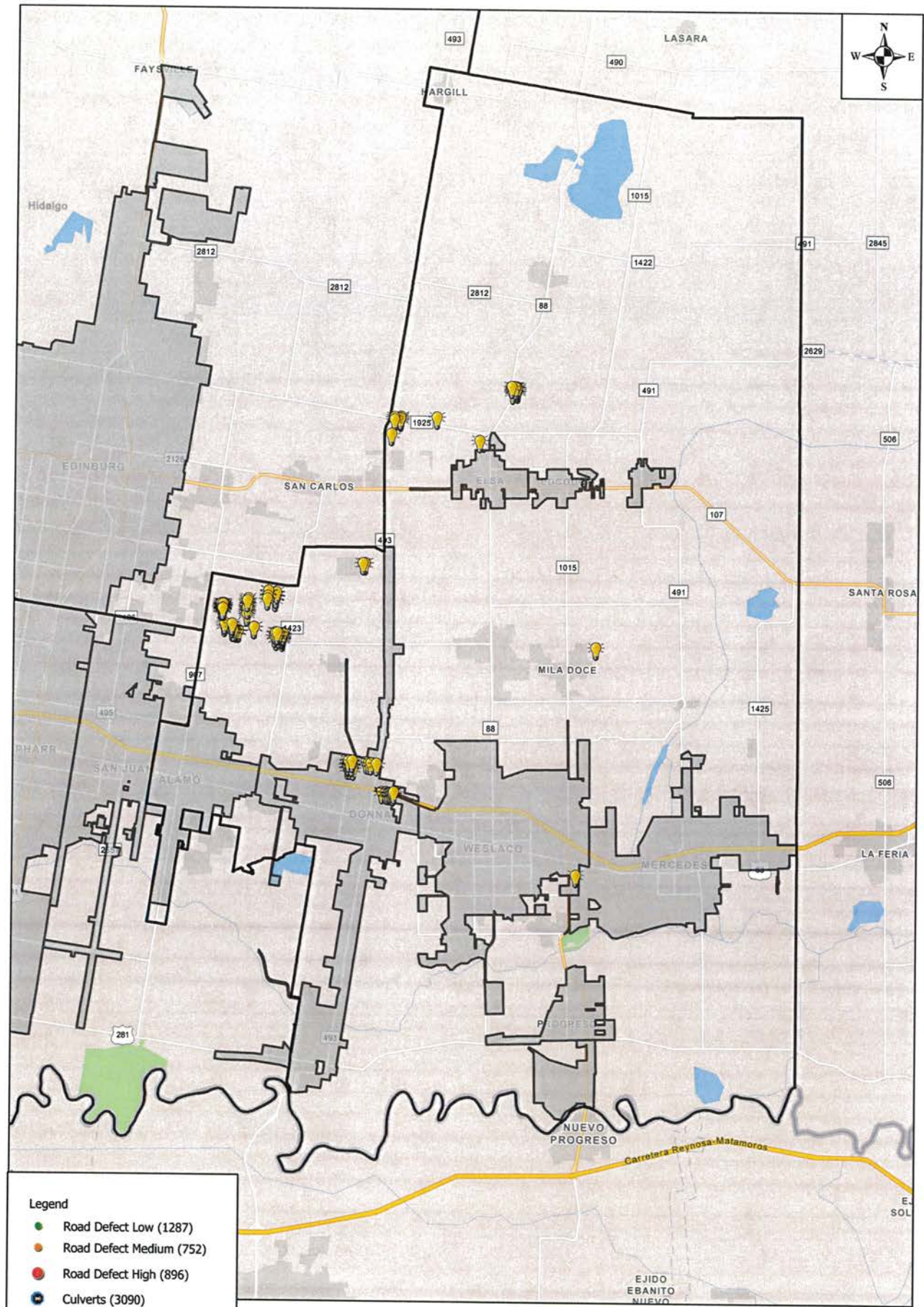
Exhibit A



- Legend**
- Road Defect Low (1287)
 - Road Defect Medium (752)
 - Road Defect High (896)
 - Culverts (3090)
 - Inlets (176)
 - 💡 Street Lighting (101)
 - ◆ Street Signage (810)
 - City Limits
 - Precinct Limits

Hidalgo County Street Inventory
Precinct 1 Overall February Progress

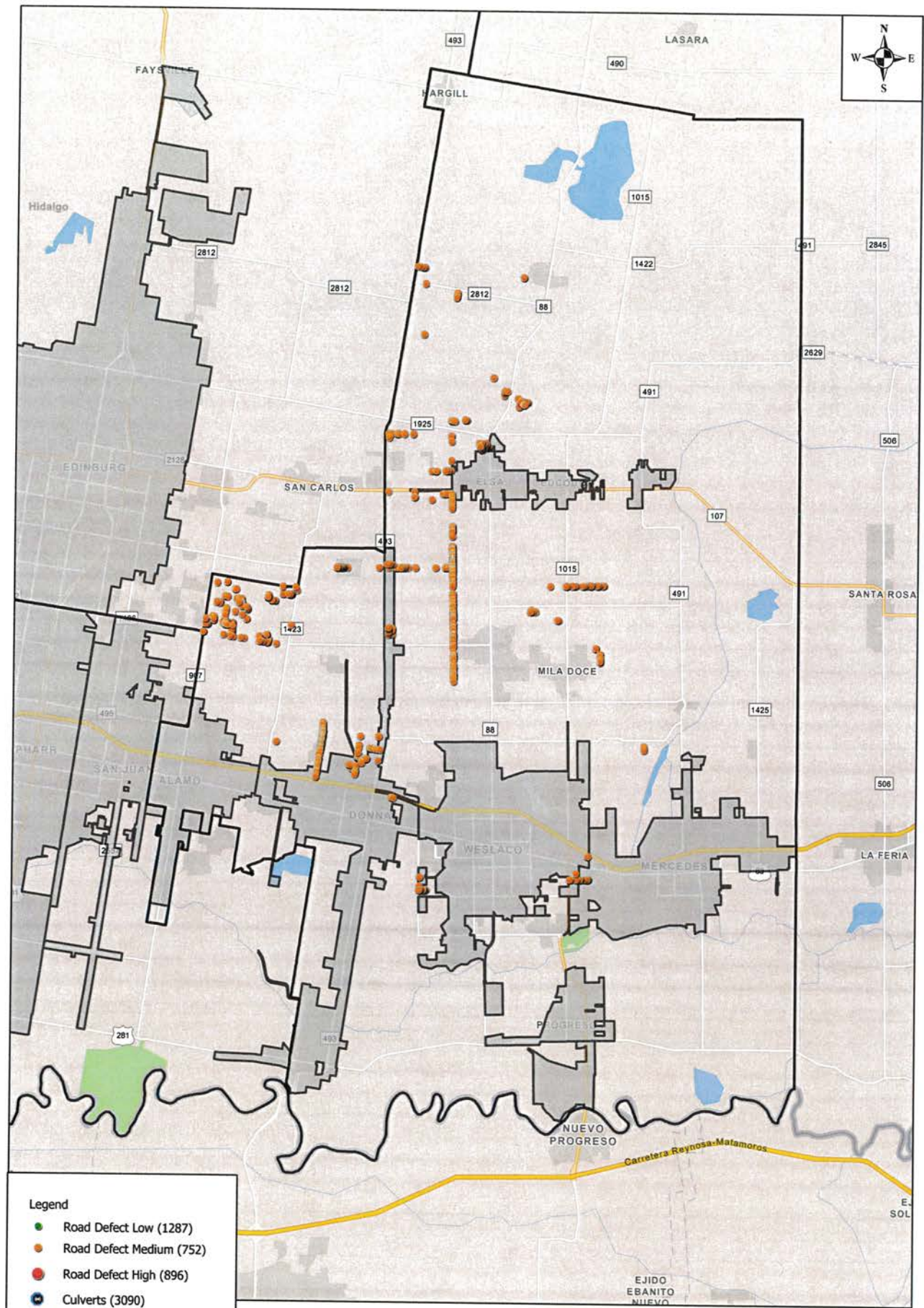




- Legend**
- Road Defect Low (1287)
 - Road Defect Medium (752)
 - Road Defect High (896)
 - Culverts (3090)
 - Inlets (176)
 - 💡 Street Lighting (101)
 - 🚧 Street Signage (810)
 - ▭ City Limits
 - ▭ Precinct Limits

Hidalgo County Street Inventory
 February Progress
 Showing Street Lighting Only

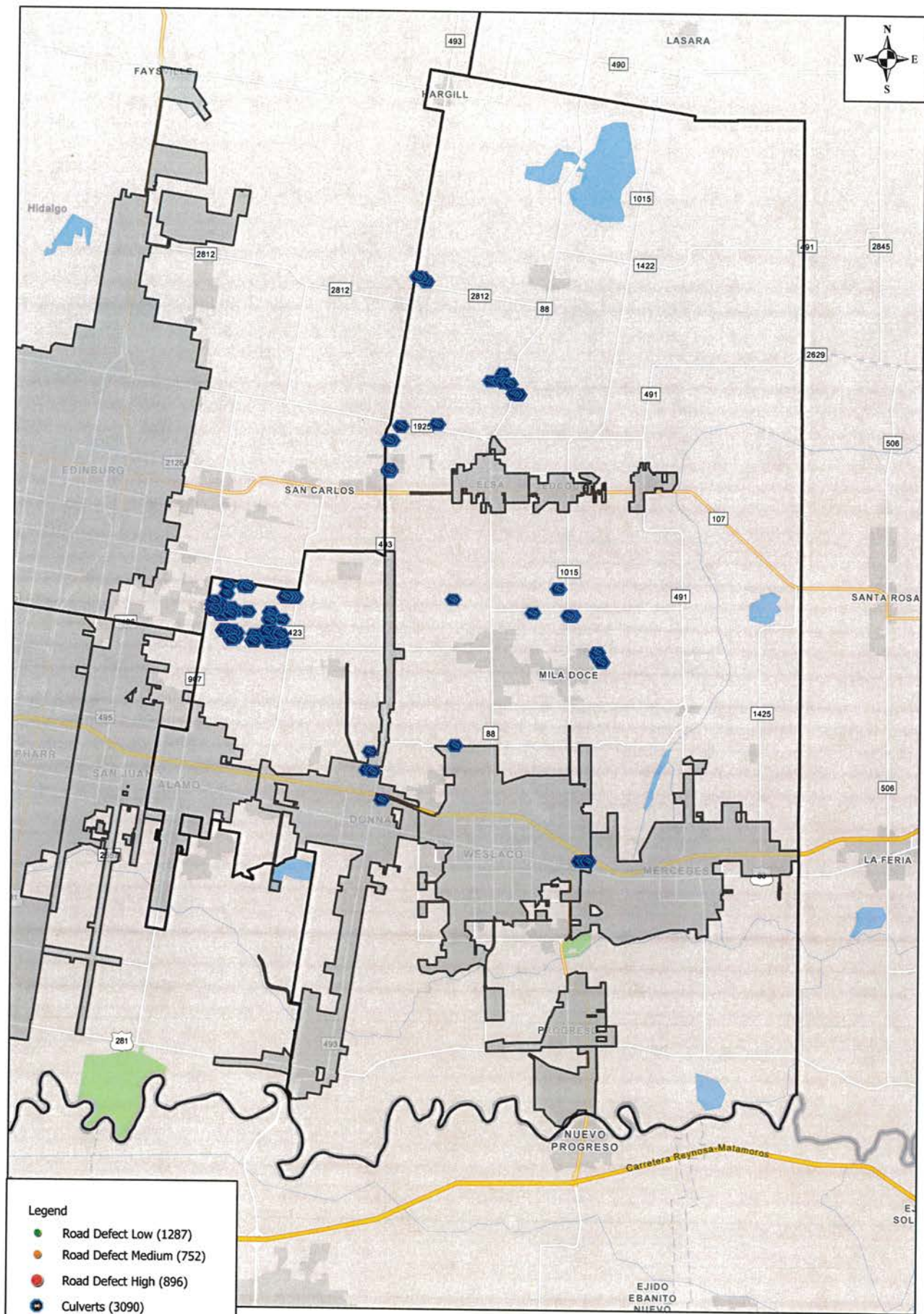




- Legend**
- Road Defect Low (1287)
 - Road Defect Medium (752)
 - Road Defect High (896)
 - Ⓜ Culverts (3090)
 - Ⓜ Inlets (176)
 - 💡 Street Lighting (101)
 - ⚠ Street Signage (810)
 - ▭ City Limits
 - ▭ Precinct Limits

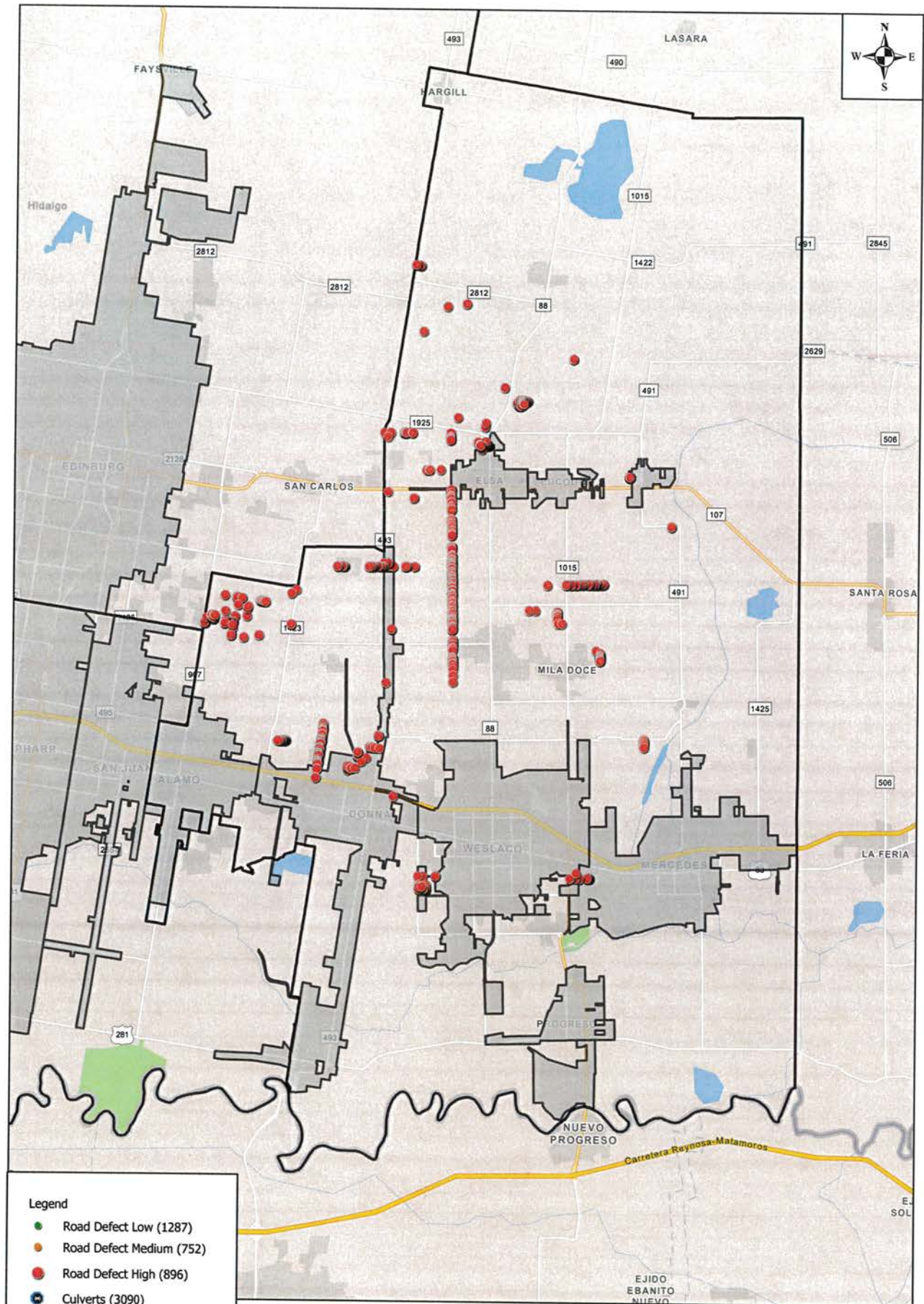
Hidalgo County Street Inventory
 February Progress
 Showing Medium Road Defects Only





Hidalgo County Street Inventory
 February Progress
 Showing Inlets Only

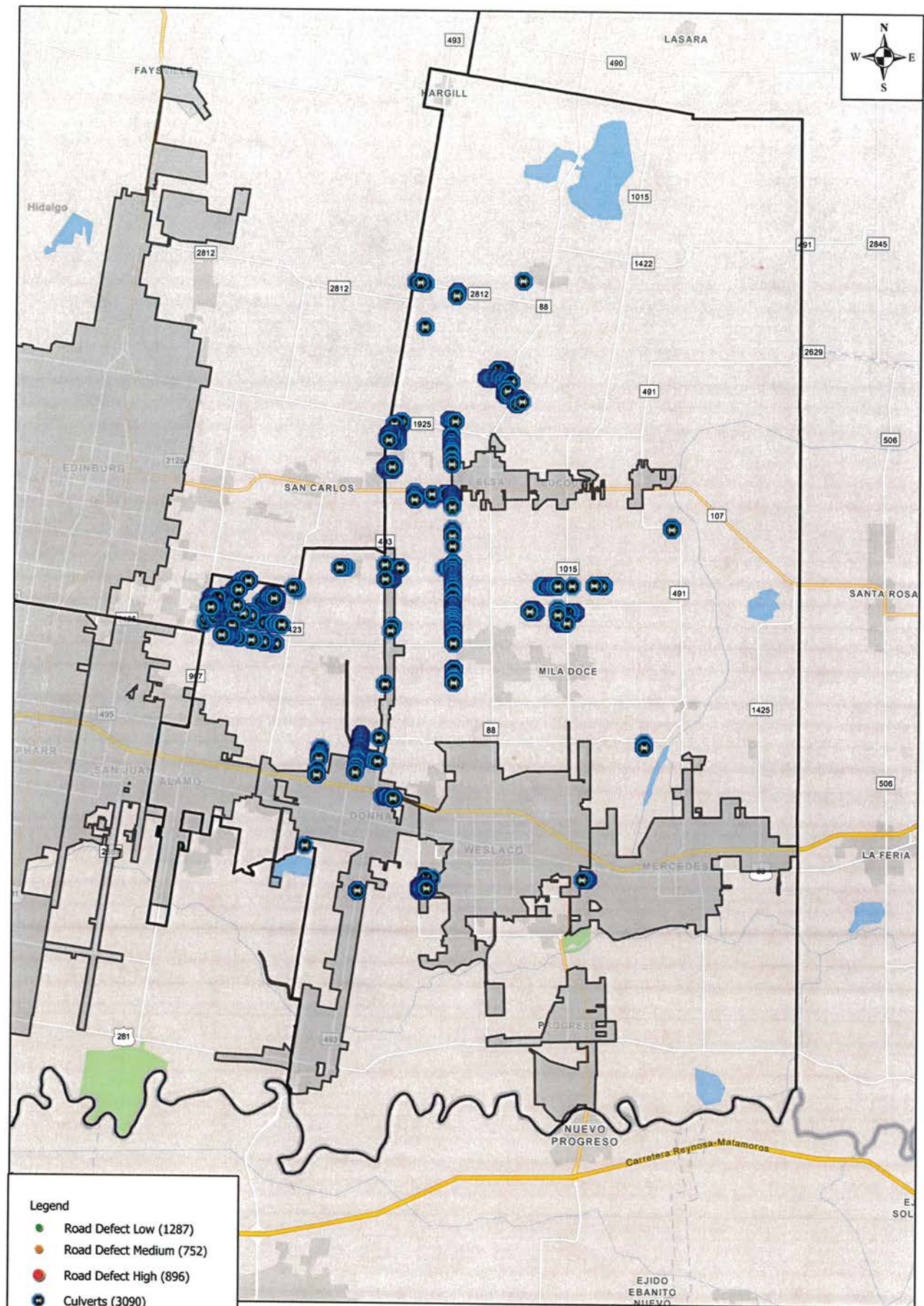




- Legend**
- Road Defect Low (1287)
 - Road Defect Medium (752)
 - Road Defect High (896)
 - Culverts (3090)
 - Inlets (176)
 - 💡 Street Lighting (101)
 - ⚠️ Street Signage (810)
 - City Limits
 - Precinct Limits

Hidalgo County Street Inventory
 February Progress
 Showing High Road Defects Only



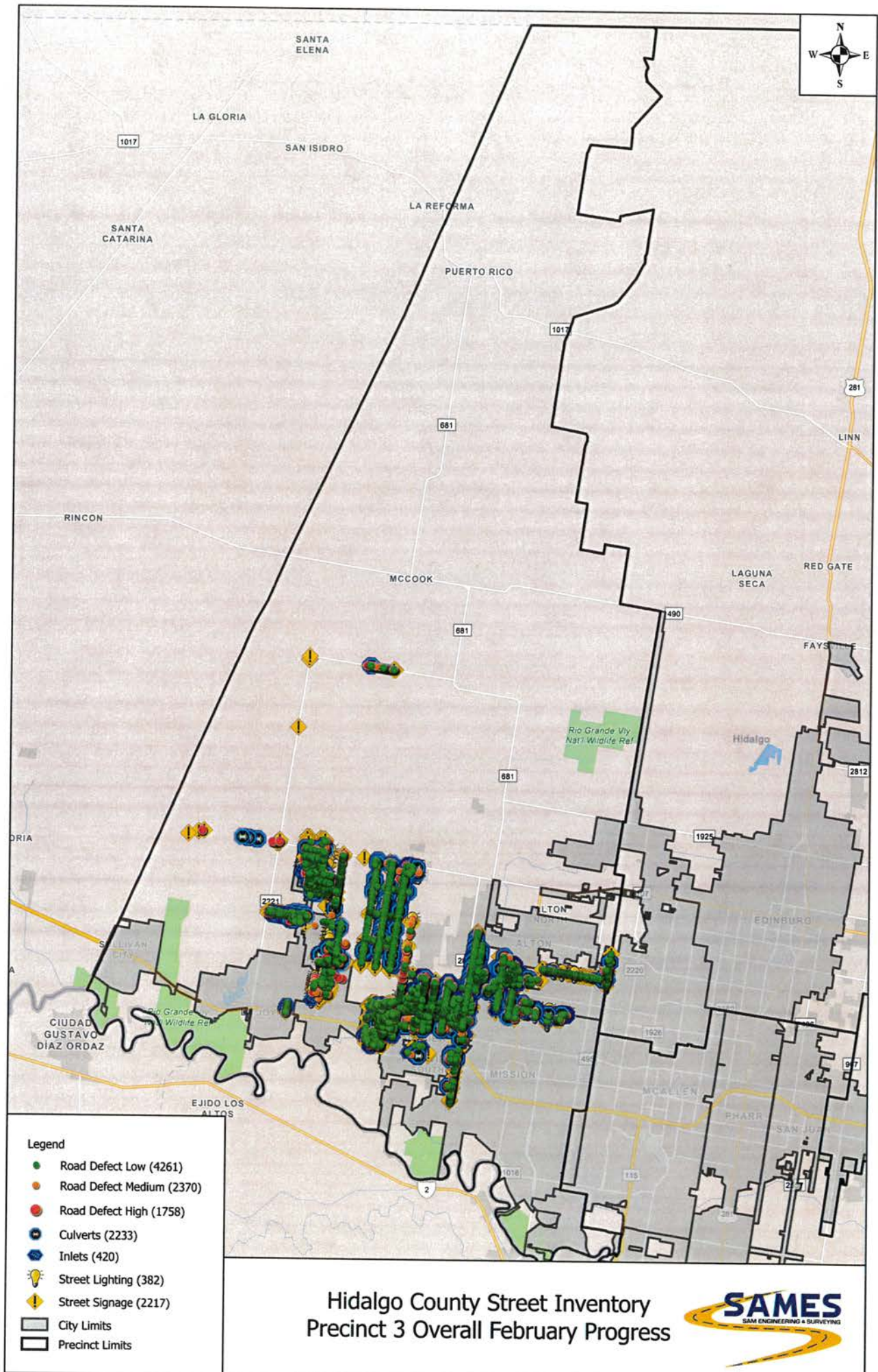


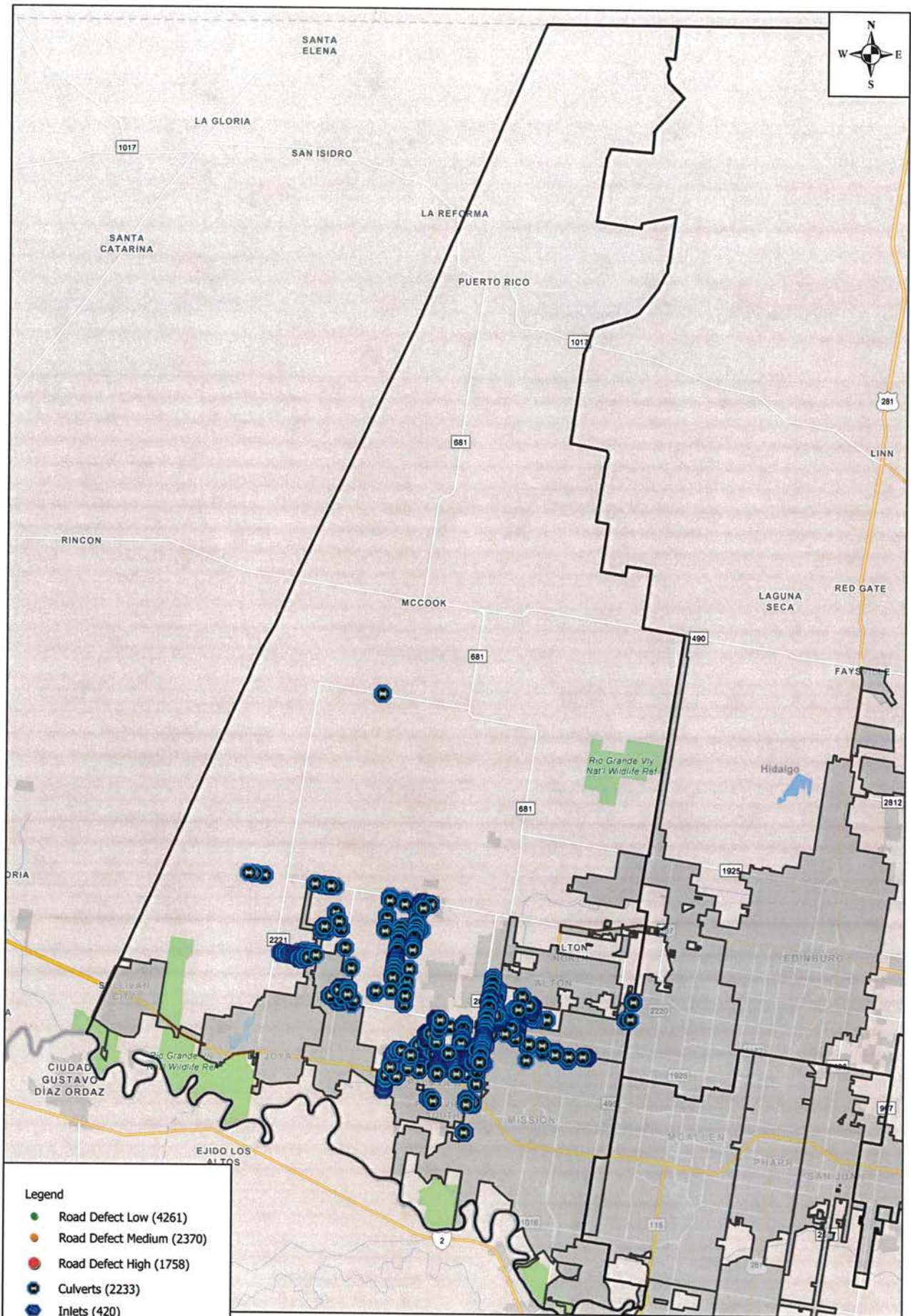
Legend

- Road Defect Low (1287)
- Road Defect Medium (752)
- Road Defect High (896)
- Culverts (3090)
- Inlets (176)
- 💡 Street Lighting (101)
- ⚠️ Street Signage (810)
- City Limits
- Precinct Limits

Hidalgo County Street Inventory
February Progress
Showing Culverts Only

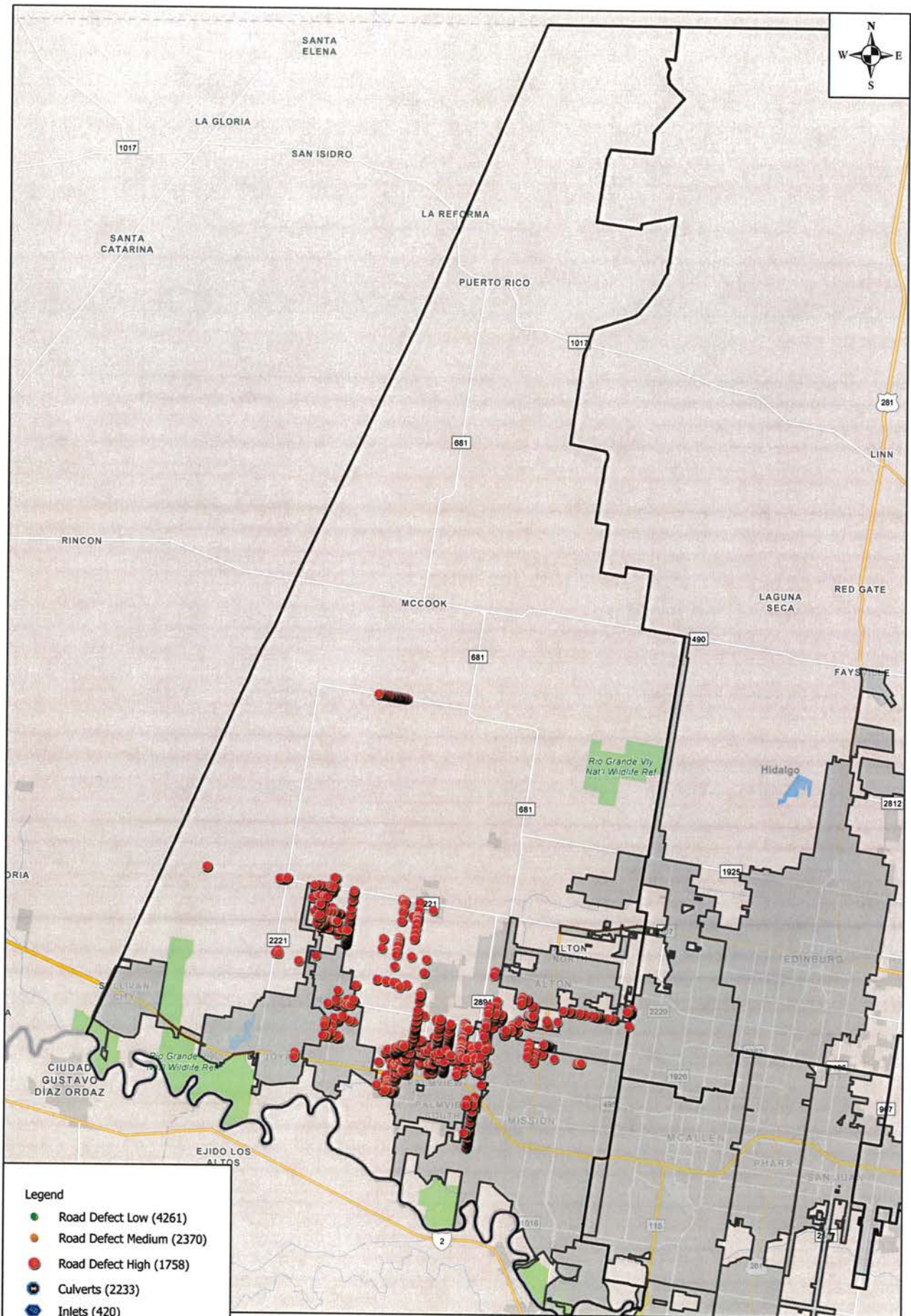






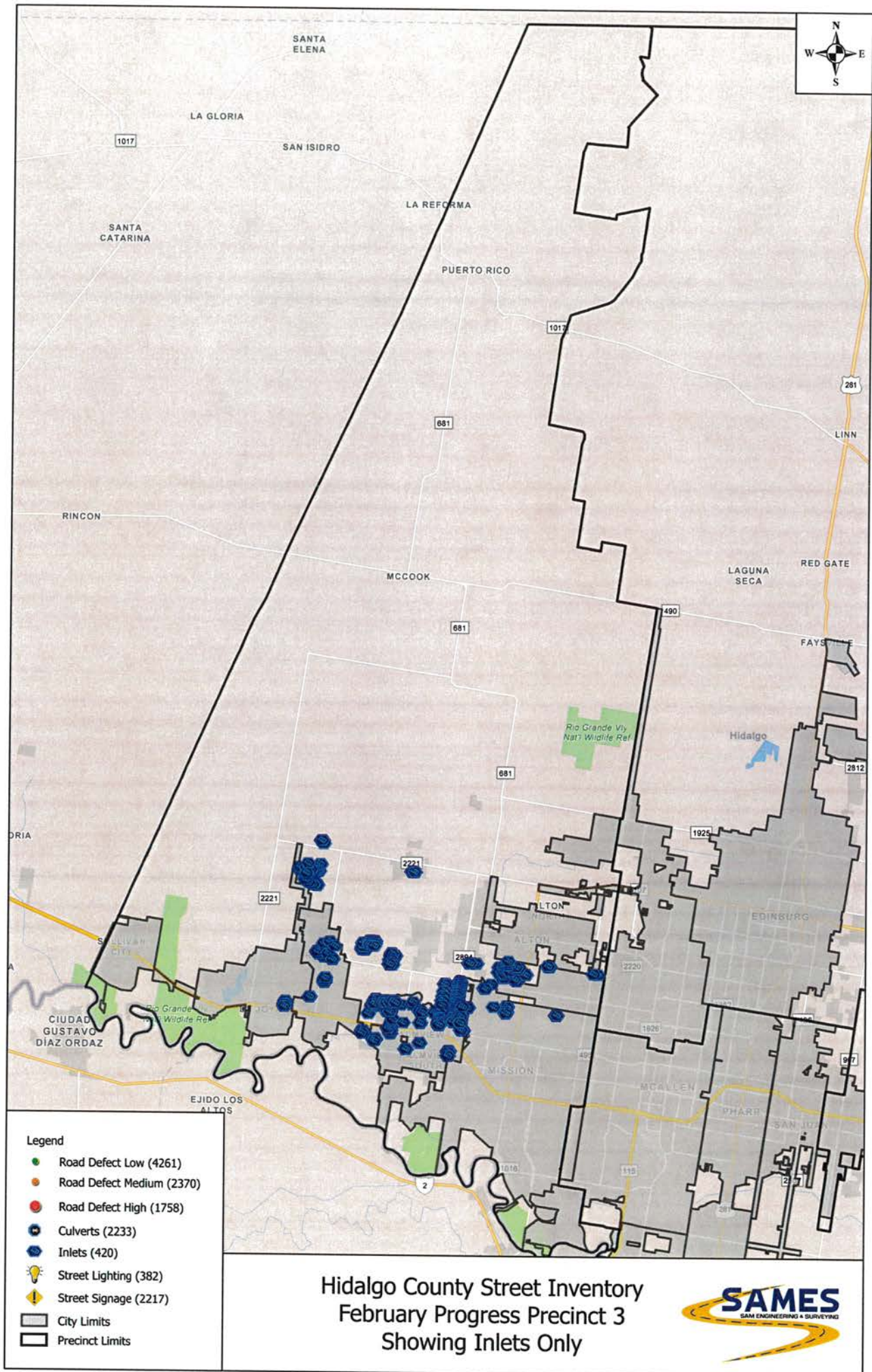
Hidalgo County Street Inventory
 February Progress Precinct 3
 Showing Culverts Only

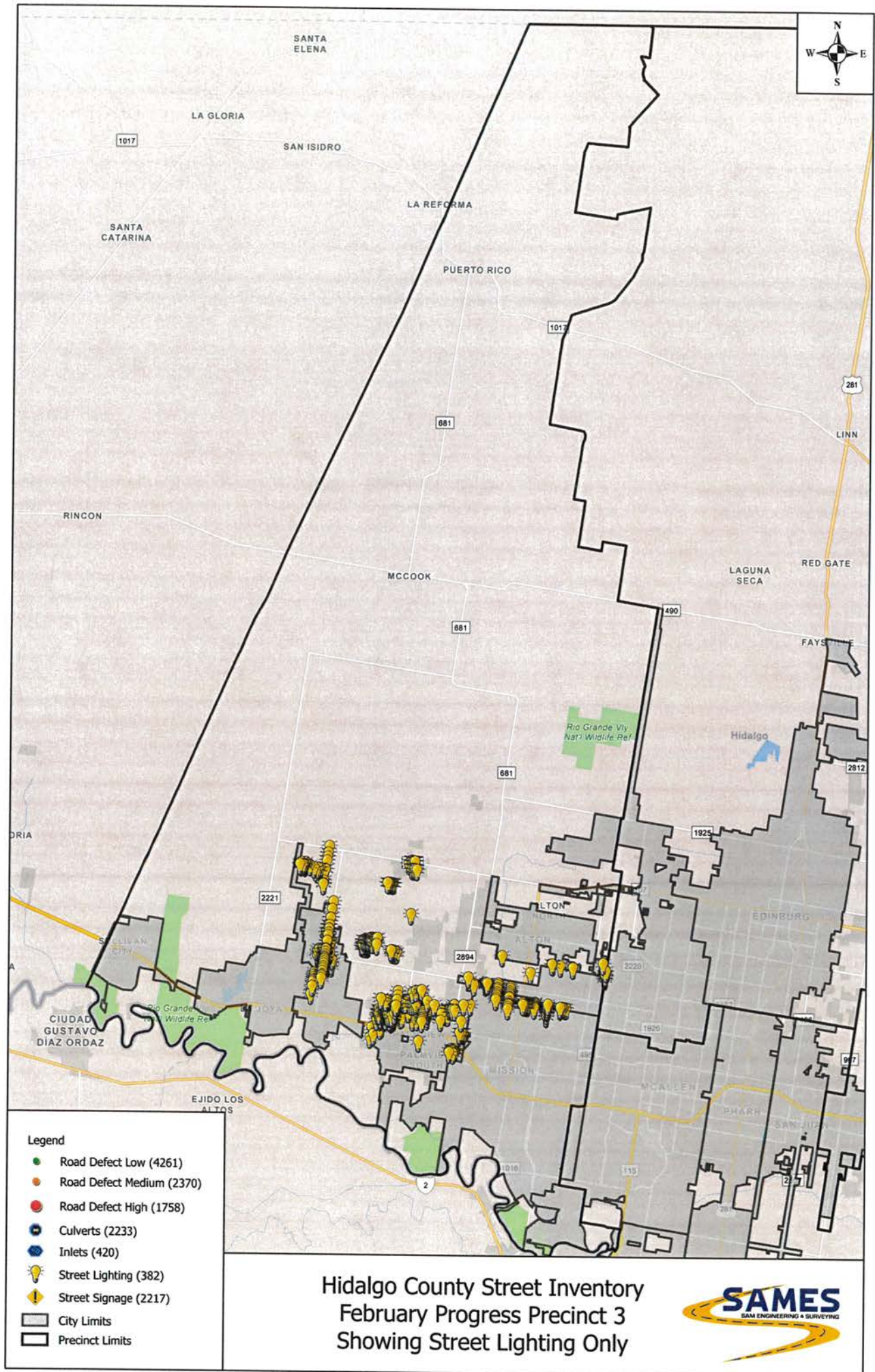




Hidalgo County Street Inventory
 February Progress Precinct 3
 Showing High Defects Only





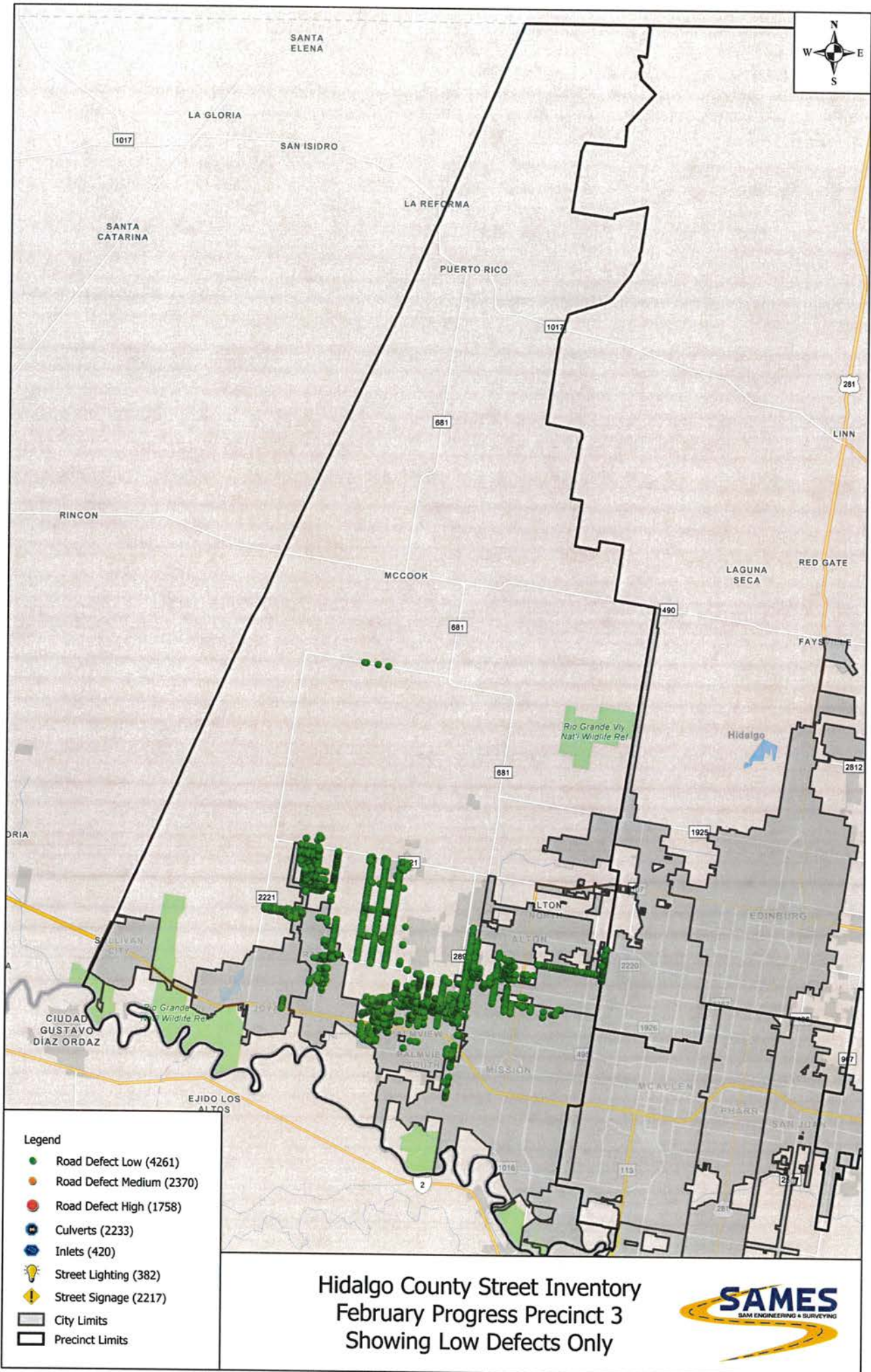


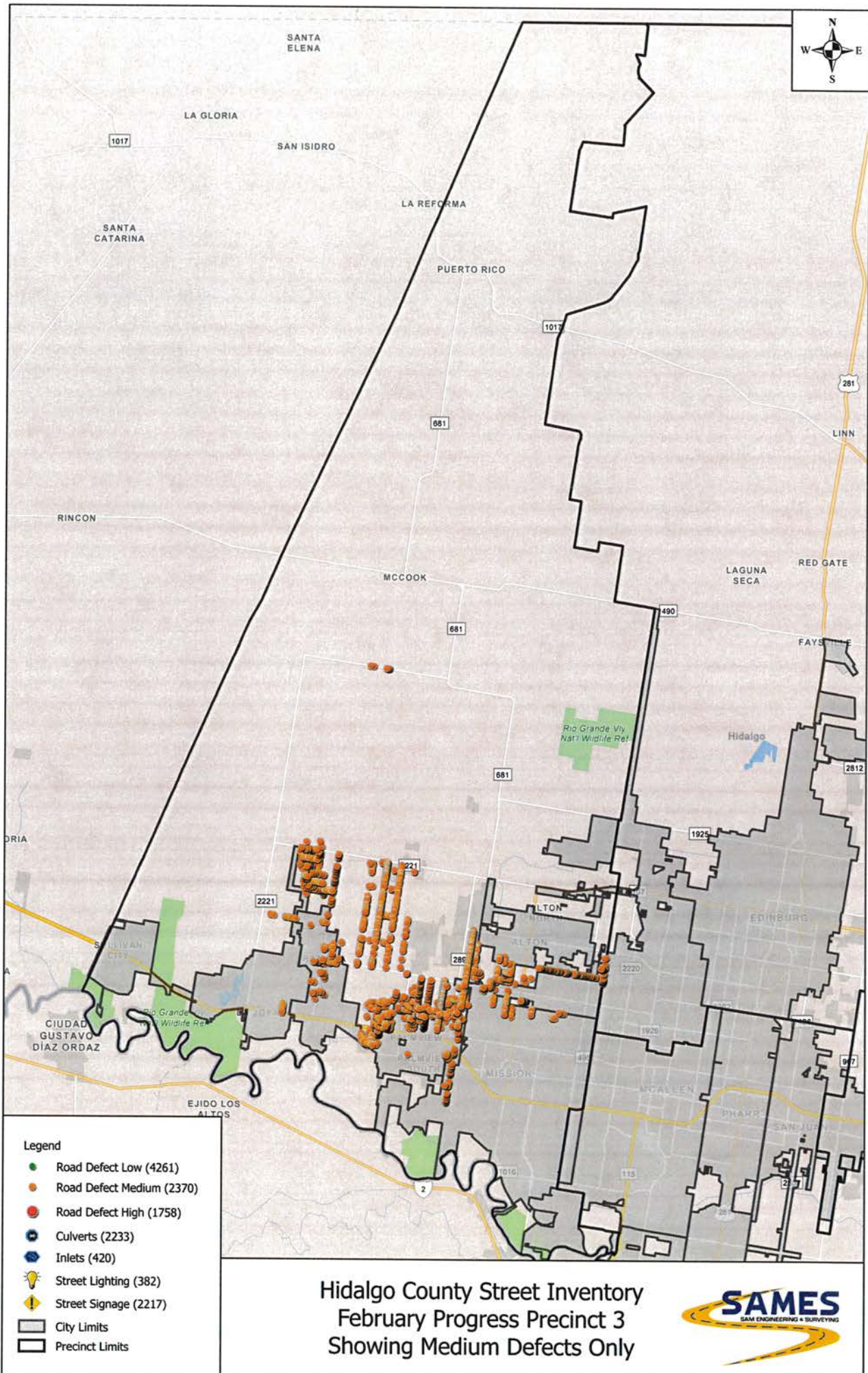
Legend

- Road Defect Low (4261)
- Road Defect Medium (2370)
- Road Defect High (1758)
- Culverts (2233)
- Inlets (420)
- 💡 Street Lighting (382)
- ⚠️ Street Signage (2217)
- City Limits
- Precinct Limits

Hidalgo County Street Inventory
 February Progress Precinct 3
 Showing Street Lighting Only



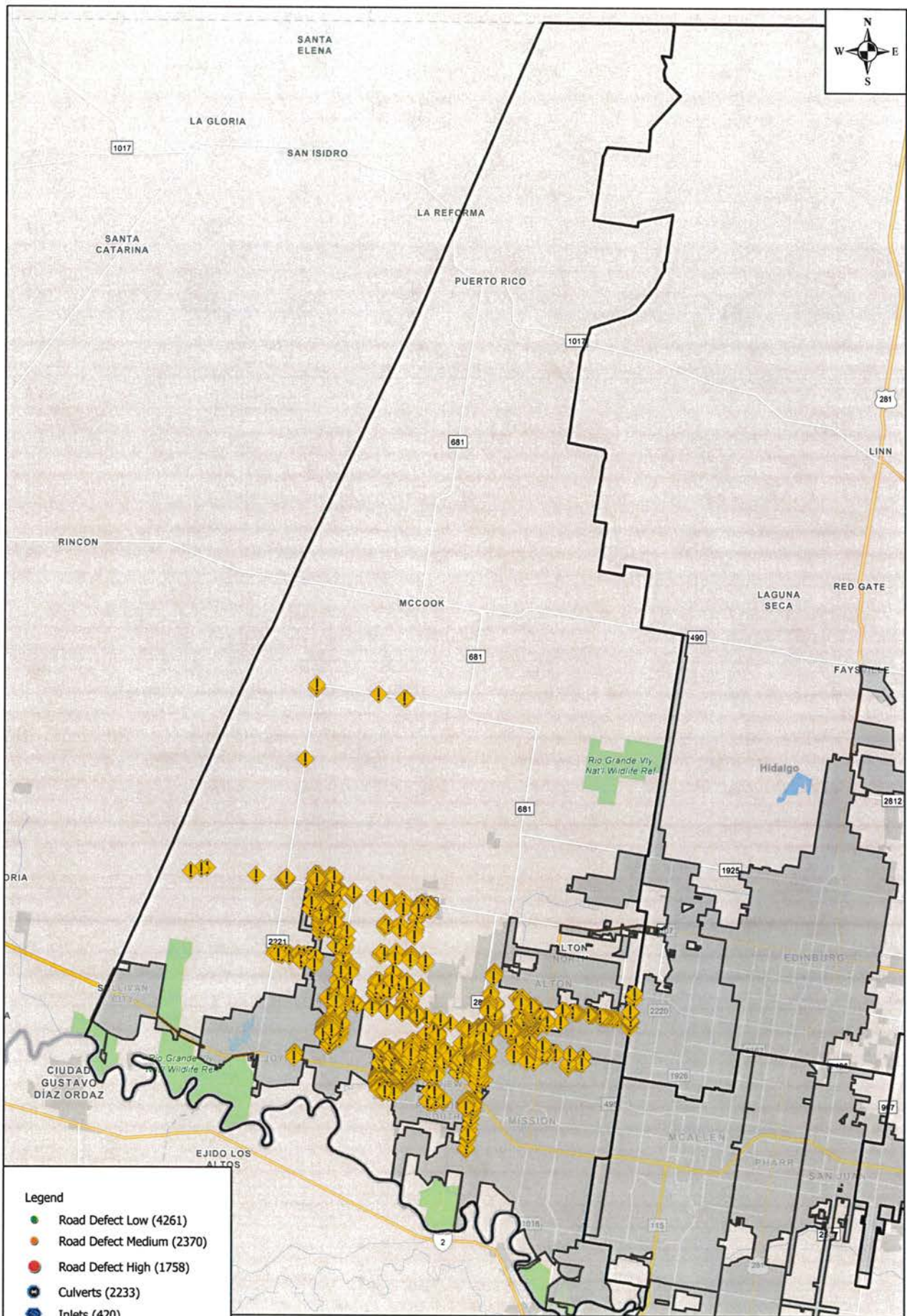




- Legend**
- Road Defect Low (4261)
 - Road Defect Medium (2370)
 - Road Defect High (1758)
 - Culverts (2233)
 - Inlets (420)
 - Street Lighting (382)
 - Street Signage (2217)
 - ▭ City Limits
 - ▭ Precinct Limits

Hidalgo County Street Inventory
 February Progress Precinct 3
 Showing Medium Defects Only





- Legend**
- Road Defect Low (4261)
 - Road Defect Medium (2370)
 - Road Defect High (1758)
 - Culverts (2233)
 - Inlets (420)
 - Street Lighting (382)
 - Street Signage (2217)
 - ▭ City Limits
 - ▭ Precinct Limits

Hidalgo County Street Inventory
 February Progress Precinct 3
 Showing Street Signage Only



Exhibit B

Exhibit B - List of Roads Inspected - February 2022

Street Name	Pct	Road ID	City	Starting Point	End Point
New Horizons Dr	1	4767	Donna	<u>26.152668 -98.026040</u>	<u>26.155673 -98.025522</u>
Jesus Flores Rd	1	1069	Edcouch	<u>26.412182 -97.994520</u>	<u>26.415245 -97.993987</u>
W Mile 6 1/2 N	1	1490	Donna	<u>26.147741 -98.014608</u>	<u>26.147633 -98.021945</u>
CR 1834	1	1519	Weslaco	<u>26.131212, -98.030143</u>	<u>26.138120, -98.027616</u>
Charles Green Rd	1	1209	Edcouch	<u>26.408272 -97.987067</u>	<u>26.408347 -97.986382</u>
Charles Green Rd	1	1100	Edcouch	<u>26.408949 -97.982935</u>	<u>26.408367 -97.986167</u>
Garcia St	1	3853	Edcouch	<u>26.381965 -97.999973</u>	<u>26.383387 -98.009421</u>
Llave st	1	1295	Donna	<u>26.144473 -98.021925</u>	<u>26.144533 -98.018648</u>
Chilton st	1	1384	Donna	<u>26.143680 -98.021922</u>	<u>26.143734 -98.018638</u>
Mile 22 1/2 North Rd	1	4738	Edcouch	<u>26.375880 -98.008370</u>	<u>26.376122 -98.010002</u>
Don Bruno st	1	1296	Donna	<u>26.142911 -98.021916</u>	<u>26.142965 -98.018627</u>
Campana st	1	1385	Donna	<u>26.144678 -98.018625</u>	<u>26.142631 -98.018588</u>
Alma St	1	3743	Edcouch	<u>26.368360 -98.007484</u>	<u>26.365207 -98.008041</u>
Beach St	1	4845	Edcouch	<u>26.370433 -98.021394</u>	<u>26.373069 -98.020936</u>
Sand St	1	4844	Edcouch	<u>26.373055 -98.020962</u>	<u>26.373601 -98.024754</u>
Breeze St	1	4843	Edcouch	<u>26.373621 -98.024767</u>	<u>26.370998 -98.025264</u>
Julisa Ave	1	4709	Donna	<u>26.142470 -98.047730</u>	<u>26.142509 -98.048066</u>
Ocean St	1	4846	Edcouch	<u>26.370712 -98.023327</u>	<u>26.373309 -98.022863</u>
Mile 7 W	1	1061	Edcouch	<u>26.362808 -98.019736</u>	<u>26.357669 -98.020641</u>
E Sioux Rd	1	5219	Alamo	<u>26.209765, -98.113905</u>	<u>26.209304, -98.110775</u>
Champion Dr	1	1482	Donna	<u>26.154332 -98.037974</u>	<u>26.156743 -98.037558</u>
Mile 7 W	1	1060	Edcouch	<u>26.357669 -98.020641</u>	<u>26.352721 -98.021529</u>
Mile 7 W	1	1186	Edcouch	<u>26.352721 -98.021529</u>	<u>26.350566 -98.021918</u>
Mile 7 W	1	1059	Edcouch	<u>26.350566 -98.021918</u>	<u>26.347059 -98.022537</u>
S Hutto Rd	1	1480	Donna	<u>26.159437 -98.070021</u>	<u>26.158856 -98.070085</u>
Mile 21 N	1	1187	Edcouch	<u>26.361658 -98.011724</u>	<u>26.359302 -97.995870</u>
Pine Ave	1	327	Donna	<u>26.196671 -98.022773</u>	<u>26.196982 -98.025064</u>
Pine Ave	1	615	Donna	<u>26.196870 -98.025139</u>	<u>26.197127 -98.026918</u>
Jesus Flores Rd	1	1197	Edcouch	<u>26.364013 -98.003163</u>	<u>26.349750, -98.005720</u>
E North Ave	1	1280	Donna	<u>26.178145 -98.032742</u>	<u>26.178089 -98.037852</u>
Solana Dr	1	5202	Edcouch	<u>26.347193 -97.991850</u>	<u>26.347922 -97.996870</u>
Solana Dr	1	5139	Edcouch	<u>26.347922 -97.996870</u>	<u>26.348072 -97.997834</u>
County Road 1176	1	610	Donna	<u>26.186567 -98.030424</u>	<u>26.185952 -98.030530</u>
Johnson In	1	4417	Donna	<u>26.188475 -98.039691</u>	<u>26.189128 -98.044324</u>
Hurst Dr	1	4080	Edcouch	<u>26.346892, -97.980183</u>	<u>26.347328, -97.981639</u>
Oak Hill Dr	1	4127	Edcouch	<u>26.344917, -97.982100</u>	<u>26.355044, -97.980267</u>
Lorena ct	1	786	Donna	<u>26.186581 -98.049221</u>	<u>26.187167 -98.052448</u>
Vista De Palmas Dr	1	4842	Edcouch	<u>26.338453 -97.991418</u>	<u>26.337876 -97.987442</u>
Lost Meadow Dr	1	784	Donna	<u>26.187983 -98.048994</u>	<u>26.188630 -98.052074</u>
Justin Cir	1	788	Donna	<u>26.188627 -98.052073</u>	<u>26.187969 -98.052205</u>
Mark Ct	1	787	Donna	<u>26.188338 -98.050749</u>	<u>26.187783 -98.050849</u>
Alve Dr	1	781	Donna	<u>26.189317 -98.048770</u>	<u>26.189769 -98.052038</u>
Vista Ridge Dr	1	4431	Edcouch	<u>26.335405 -97.991961</u>	<u>26.333857 -97.984118</u>
Vista Ridge Dr	1	4779	Edcouch	<u>26.335458 -97.996049</u>	<u>26.335475 -97.992060</u>

Norene Dr	1	1228	Edcouch	26.333358 -97.992174	26.329508 -97.992882
Norene Dr	1	1123	Edcouch	26.319318 -97.994841	26.314454 -97.995687
Norene Dr	1	1227	Edcouch	26.319318, -97.994841	26.329460, -97.992907
Ferguson Rd	1	798	Donna	26.198141 -98.081230	26.198174 -98.074712
PR 101	1	959	Donna	26.227238, -98.065340	26.220058, -98.065316
Mile 12 1/2 N	1	5145	Mercedes	26.236427, -97.916158	26.236469, -97.911577
Nittler Rd	1	1207	Edcouch	26.394787, -97.938782	26.394249, -97.932414
Walkway Ln	1	1644	Weslaco	26.213074, -97.911443	26.213159, -97.910693
Mile 10 Rd N	1	899	Mercedes	26.194316 -97.910754	26.197712 -97.906323
Ruiz Ave	1	1055	Edcouch	26.328721 -97.987538	26.331441 -97.987067
Mile 1 W	1	361	Mercedes	26.199911 -97.927000	26.196137 -97.926922
Sanchez Ave	1	1113	Edcouch	26.328569 -97.986480	26.330496 -97.986128
Scarlet St	1	5214	Edcouch	26.328193 -97.984026	26.330335 -97.983629
Harry St	1	5215	Edcouch	26.327962 -97.982233	26.330058 -97.981869
Brandy St	1	5213	Edcouch	26.330079 -97.981755	26.330692 -97.984581
Mile 7 N	1	1491	Weslaco	26.155995 -97.949703	26.155933 -97.954326
Hidalgo St	1	1015	Edcouch	26.327827 -97.981577	26.325219 -97.982039
Alice St	1	1016	Edcouch	26.327963 -97.982545	26.325336 -97.983003
Los Pinos Ave	1	1012	Edcouch	26.326238 -97.977301	26.326729 -97.980751
Cedro Dr	1	1014	Edcouch	26.326708 -97.980734	26.324386 -97.981165
Ebano Dr	1	1013	Edcouch	26.325406 -97.979951	26.325210 -97.978580
Olmo Dr	1	1017	Edcouch	26.326571 -97.979757	26.324277 -97.980161
Camino Real Viejo Rd	1	1351	Weslaco	26.147252 -97.958169	26.147400 -97.949638
Armando St	1	1590	Monte Alto	26.371733 -97.979830	26.373287 -97.979541
Palm Parkway Dr	1	1408	Weslaco	26.147856 -97.955237	26.149826 -97.955255
Palm Parkway Dr	1	1409	Weslaco	26.147339 -97.955233	26.147921 -97.955234
Mile 3 W	1	1248	Edcouch	26.324860 -97.961197	26.342589 -97.958011
Jade St	1	1401	Weslaco	26.149185 -97.955237	26.149198 -97.954267
Kalanchoe St	1	1402	Weslaco	26.148254 -97.955216	26.148277 -97.954252
Mile 2 1/2 W	1	1177	Edcouch	26.320102 -97.953896	26.329359 -97.952326
Mile 2 1/2 West	1	1176	Edcouch	26.319967 -97.953947	26.314565 -97.954950
Lorena St	1	4763	Mercedes	26.235925 -97.947676	26.232685 -97.947474
County Rd 3327	1	1221	Yznaga	26.327570 -97.862060	26.327654 -97.866119
Canuck St	1	4415	Mercedes	26.228732 -97.945660	26.232155 -97.945730
CR 33354	1	995	La Villa	26.305569 -97.915078	26.309210 -97.913656
County Road 16343	1	867	Weslaco	26.247593 -97.960047	26.247655 -97.956133
Spanish palms Dr	1	515	Mercedes	26.244704 -97.960087	26.243645 -97.960064
Joel St	1	2634	Edcouch	26.377007 -98.025314	26.376489 -98.021543
Mile 13 N	1	3892	Mercedes	26.250219, -97.964204	26.243024, -97.964137
Mile 13 N	1	3893	Mercedes	26.243016, -97.964127	26.243037, -97.960064
Antonia St	1	1029	Edcouch	26.309585 -97.993593	26.309545 -97.997313
Eva St	1	1001	Edcouch	26.309630 -97.994846	26.310838 -97.998235
Eva St	1	1000	Edcouch	26.307855 -97.996748	26.310764 -97.998250
Jim St	1	3879	Mercedes	26.247816 -97.976209	26.247910 -97.973599
Josie St	1	3878	Mercedes	26.247901 -97.973597	26.248520 -97.974533
CR 3267	1	1124	Edcouch	26.319275 -98.003050	26.319862 -98.006826
Joleigh St	1	3876	Mercedes	26.248513 -97.974522	26.248510 -97.976218

Engleman Garden Rd	1	1588		26.317538, -98.019644	26.320481, -98.019136
Engleman Garden Rd	1	1236		26.318297, -98.019313	26.325219, -98.018244
Engleman Garden Rd	1	1021		26.318310, -98.019319	26.318007, -98.019174
Engleman Garden Rd	1	1135		26.318007, -98.019174	26.317454, -98.018764
Mile 15 N	1	965	Weslaco	26.271356, -98.008999	26.271192, -98.022174
Diaz St	1	979	Edcouch	26.271852, -97.979783	26.273603, -97.978925
Oak Dr	1	984	Edinburg	26.319395 -98.011143	26.318902 -98.007723
W Mile 9 N	1	3773	Donna	26.193544 -98.056110	26.193008 -98.052183
Bohemia St	1	5193	Edinburg	26.319009 -98.031003	26.317573 -98.031280
Quentin Street	1	5192	Edinburg	26.319350 -98.033526	26.317673 -98.033863
E Mile 9 Rd	1	318	Donna	26.192420 -98.048203	26.191185 -98.039224
Rogers Rd	1	1056	Edinburg	26.314069 -98.037804	26.314181 -98.024231
Cherokee Dr	1	783	Donna	26.192204 -98.046663	26.187290 -98.045354
Jeanine St	1	1077	Edinburg	26.314072 -98.036176	26.311244 -98.036161
Cenizo St	1	1141	Edinburg	26.314077 -98.032562	26.311076 -98.032531
Esperanza St	1	1078	Edinburg	26.314076 -98.034985	26.311288 -98.034959
Portillo St	1	1079	Edinburg	26.314074 -98.033770	26.311235 -98.033751
El Centro St	1	1080	Edinburg	26.312571 -98.032573	26.312532 -98.037822
Commercial Ave	1	3896	Edinburg	26.300173 -98.029733	26.299979 -98.034259
Commercial Ave	1	1082	Edinburg	26.300087 -98.034287	26.300066 -98.037774
Leanne Ln	1	3774	Donna	26.195379 -98.038502	26.195970 -98.042970
East St	1	3897	Edinburg	26.307413 -98.029752	26.300133 -98.029701
CR 3134	1	1081	Edinburg	26.300071 -98.034284	26.296723 -98.034231
Imperial Dr	1	1083	Edinburg	26.297259 -98.036249	26.297162 -98.037781
Celia St	1	679	Donna	26.200076 -98.039223	26.203368 -98.039294
Rail Road Ave	1	1091	Donna	26.296451, -98.037758	26.296521, -98.035929
Joy Dr	1	3962	Donna	26.220145 -98.036949	26.220149 -98.036220
San Jose Dr	1	3963	Donna	26.218718 -98.036944	26.218722 -98.036128
Ebony Ave	1	989	Edinburg	26.302377 -98.034180	26.300797 -98.034157
Cedar Ave	1	988	Edinburg	26.302414 -98.037775	26.302428 -98.034185
Ash Ave	1	993	Edinburg	26.300710 -98.037780	26.300737 -98.034213
Date Palm Ave	1	994	Edinburg	26.302403 -98.035962	26.300763 -98.035959
Beech Ave	1	997	Edinburg	26.301556 -98.037767	26.301582 -98.034193
E Sioux Rd	1	944	Donna	26.206922, -98.057094	26.207046, -98.052923
Mile 17 N	1	1028	Edinburg	26.300396 -98.009509	26.300181 -98.022313
Flea Market Dr	1	478	Edinburg	26.292955 -98.017868	26.289359 -98.017815
El Triunfo	1	471	Edinburg	26.291755 -98.009332	26.291671 -98.013304
Aurora St	1	473	Edinburg	26.292834 -98.025154	26.289527 -98.025128
Mile 14 N	1	441	Mercedes	26.257805 -97.944200	26.257572 -97.960222
Mile 14 N	1	442	Mercedes	26.257555 -97.960318	26.257385 -97.971936
CR 6611	1	699	Edinburg	26.292787 -98.036186	26.291071 -98.036180
Private Road 173	1	1597	Mercedes	26.279979 -97.915955	26.276353 -97.915882
Mile 14 1/2	1	459	Donna	26.263776 -98.037477	26.263843 -98.023020
Mile 11 1/2 N	1	827	Donna	26.221670, -98.036909	26.221726, -98.025049
Mile 6 W	1	991	Edinburg	26.314176 -98.009791	26.302190 -98.009527
N Hutto Rd	1	308	Donna	26.205488 -98.062772	26.184110 -98.065799
Mile 10 N	1	320	Weslaco	26.198697 -98.007470	26.198766 -98.003477

County Rd 6500	1	800	Donna	26.201097 -98.046764	26.200539 -98.046841
County Rd 6500	1	645	Donna	26.200535 -98.046843	26.185301 -98.049409
E Canton Rd	1	4697	Donna	26.263642 -98.057526	26.263664 -98.052995
Blue Bonnet Dr	1	630	Donna	26.265041 -98.037481	26.265062 -98.033900
Mile 6 W	1	394	Edinburg	26.293147 -98.009354	26.226796 -98.008010
E Canton Rd	1	1903	Donna	26.263757 -98.037570	26.263732 -98.044363
Lopez Gutierrez Ct	1	939	Donna	26.259567 -98.037444	26.259601 -98.033774
Flamingo Dr	1	718	Donna	26.241965 -98.035652	26.238605 -98.035616
Turner Dr	1	719	Donna	26.241976 -98.034048	26.238615 -98.034019
Lucio Dr	1	733	Donna	26.240295 -98.034059	26.240276 -98.035611
Schuerbach Rd	3	2729	La Joya	26.198507 -98.364448	26.204905 -98.363352
Schuerbach Rd	3	4414	La Joya	26.204934 -98.363332	26.205687 -98.363200
Schuerbach Rd	3	3458	La Joya	26.205668 -98.363193	26.210669 -98.362320
Jose Rodriguez Service	1	1140	Elsa	26.302175 -98.009497	26.302228 -98.007762
E Mile 14 1/2 N	1	5173	Donna	26.263722 -98.044410	26.263614 -98.046802
Jimmy Garza Dr	3	2718	La Joya	26.222517 -98.364127	26.222663 -98.365330
San Blas St	3	2747	La Joya	26.223690 -98.363930	26.223842 -98.365048
San Cenovio St	3	2719	La Joya	26.223844 -98.364922	26.225329 -98.364652
San Alejo St	3	3917	La Joya	26.224244 -98.364821	26.224084 -98.363853
Donahue St	3	2715	La Joya	26.222381 -98.361063	26.221821 -98.361163
Milagro St	3	2716	La Joya	26.222516 -98.362061	26.221401 -98.362251
Las Aves	3	2717	La Joya	26.222652 -98.363018	26.221232 -98.363269
La Camelia St	3	2714	La Joya	26.222834 -98.364026	26.222258 -98.360103
Hilda St	3	3918	La Joya	26.223700 -98.363876	26.223165 -98.359933
Carlos St	3	2712	La Joya	26.223907 -98.359806	26.224468 -98.363737
Esther St	3	2711	La Joya	26.225396 -98.363568	26.224651 -98.359669
N Minnesota Rd	3	2666	Palmview	26.238772 -98.378191	26.266024 -98.373421
Brey Fogle Rd	3	3036	La Joya	26.219581 -98.360529	26.227572 -98.359006
Schuerbach Rd	3	3459	La Joya	26.212495 -98.362022	26.219535 -98.360535
Humberto Garza Jr St	3	2722	La Joya	26.207360 -98.362913	26.207757 -98.365640
La Homa Rd	3	2760	La Joya	26.225650 -98.363553	26.220668 -98.364651
Greenland CIR S	3	2737	Palmview	26.225323 -98.386014	26.225310 -98.386020
Corales St	3	2667	Mission	26.247449 -98.295901	26.246924 -98.292019
Blue Rock Rd	3	3605	Mission	26.244327 -98.296488	26.244745 -98.300257
N Stewart Rd	3	2780	Mission	26.247876 -98.295849	26.245878 -98.296190
Green Valley Dr	3	2741	Palmview	26.226188 -98.381856	26.225562 -98.377366
Green Meadow Rd	3	2742	Palmview	26.224992 -98.382062	26.224355 -98.377574
Greenway Ave	3	2740	Palmview	26.227350 -98.381686	26.223506 -98.382344
Greenfield Ave	3	2739	Palmview	26.223821 -98.383635	26.226854 -98.383364
Greenbriar Ave	3	2738	Palmview	26.223945 -98.384931	26.226487 -98.384497
Hollow Ln	3	3419	Palmview	26.224555 -98.386900	26.225709 -98.390175
Dave St	3	2744	Palmview	26.229633 -98.385973	26.229993 -98.383581
N Bryan Rd	3	2672	Mission	26.241789 -98.305012	26.249018 -98.303835
Minnesota Rd	3	2743	Palmview	26.229723 -98.381218	26.228978 -98.381349
Sunni St	3	3161	Palmview	26.228965 -98.381401	26.229162 -98.382873
Foshee St	3	3162	Palmview	26.228302 -98.383186	26.229927 -98.382779
N Mayberry Rd	3	2673	Mission	26.250266 -98.311754	26.245960 -98.312497

Loma Linda CIR	3	3067	Palmview	26.233829 -98.399412	26.233940 -98.399800
Loma Linda CIR	3	3070	Palmview	26.236782 -98.399832	26.236234 -98.399926
Loma Linda CIR	3	3071	Palmview	26.236932 -98.400891	26.236379 -98.400961
Linda Vista Dr	3	3069	Palmview	26.235698 -98.401581	26.235399 -98.399571
La Loma	3	3068	Palmview	26.234962 -98.401714	26.234674 -98.399696
Greenland CIR W	3	3038	Palmview	26.225407 -98.386691	26.225328 -98.386039
Elida St	3	2676	Mission	26.254012 -98.319114	26.253492 -98.315532
E Turista St	3	2678	Mission	26.248885 -98.319978	26.248387 -98.316252
E Victory St	3	2677	Mission	26.249719 -98.319842	26.249210 -98.316035
CR 2245	3	3468	Palmhurst	26.254037 -98.327417	26.253000 -98.319594
Cactus	3	3174	Palmview	26.233690 -98.414965	26.234383 -98.414839
Wagon Trail Dr	3	3055	Palmview	26.234027 -98.412079	26.234648 -98.416663
Western View Dr	3	3056	Palmview	26.233928 -98.416776	26.233285 -98.412218
Horseshoe St	3	3054	Palmview	26.235353 -98.416553	26.235248 -98.415717
Dusty Trail	3	3053	Palmview	26.236021 -98.416445	26.235903 -98.415624
Cowboy LN	3	3052	Palmview	26.236721 -98.416344	26.236577 -98.415482
Apache St	3	3051	Palmview	26.237409 -98.416223	26.237309 -98.415367
Arrow Point St	3	3050	Palmview	26.238111 -98.416116	26.237992 -98.415256
Western View Dr	3	3049	Palmview	26.238964 -98.416008	26.233943 -98.416790
Compton Dr	3	3155	Mission	26.244586 -98.324957	26.250381 -98.323981
Cheril Rd	3	3469	Mission	26.252547 -98.327715	26.252733 -98.329046
Showers Rd	3	3061	Palmview	26.228539 -98.413081	26.238343 -98.411252
Moreno St	3	3467	Palmhurst	26.255418 -98.335323	26.255127 -98.333793
CR 2171	3	3466	Palmhurst	26.256135 -98.335217	26.255988 -98.334129
Clavel St	3	3650	Palmview	26.237476 -98.411399	26.237259 -98.409908
Tulipan St	3	3173	Palmview	26.234471 -98.409095	26.232758 -98.409373
Magnolia St	3	3062	Palmview	26.234585 -98.409774	26.232851 -98.410076
Claveles St	3	3063	Palmview	26.234685 -98.410471	26.232952 -98.410786
Azucena St	3	3129	Palmview	26.234781 -98.411173	26.233058 -98.411490
Bougainvillea St	3	3060	Palmview	26.234899 -98.411883	26.234479 -98.409092
Villa Rama N St	3	3057	Palmview	26.232553 -98.412352	26.233167 -98.416714
Villa Rama S St	3	3169	Palmview	26.233094 -98.416327	26.232346 -98.416413
Villa Rama S St	3	3164	Palmview	26.232333 -98.416388	26.231784 -98.412496
N Trosper Rd	3	3590	Palmhurst	26.263119 -98.325903	26.273780 -98.324104
N Trosper Rd	3	3281	Palmhurst	26.245098 -98.328926	26.259407 -98.326529
Triple J Dr	3	3167	Palmview	26.231461 -98.410624	26.231201 -98.408869
Mar St	3	3426	Palmview	26.231224 -98.408837	26.230482 -98.408970
Triple J Dr	3	3427	Palmview	26.231012 -98.408854	26.230614 -98.406161
Buck Horn Dr	3	3166	Palmview	26.230050 -98.406260	26.230763 -98.410754
Ram Ave	3	3168	Palmview	26.232126 -98.410533	26.230769 -98.410763
Villa Rama N St	3	3057	Palmview	26.232572 -98.412290	26.231878 -98.408763
Camelot CRT	3	3171	Palmview	26.230715 -98.414294	26.230812 -98.415098
Camelot Dr	3	3170	Palmview	26.231421 -98.415024	26.231222 -98.413529
Sherwood Dr	3	3172	Palmview	26.231534 -98.415781	26.230422 -98.416175
Squire LN	3	3165	Palmview	26.231108 -98.412615	26.231774 -98.417502
Los Ebanos Rd	3	2679	Palmhurst	26.247898 -98.336578	26.271205 -98.332789
Ida Dr	3	3647	Palmview	26.229521 -98.411922	26.228742 -98.406488

Don St	3	3648	Palmview	26.229836 -98.409466	26.229208 -98.409582
Marla Dr	3	3645	Palmview	26.230179 -98.411796	26.229419 -98.406373
Ida Dr	3	3646	Palmview	26.230175 -98.411810	26.229174 -98.412010
Timberwood Ave	3	3465	Mission	26.260939 -98.337748	26.259243 -98.338160
Ida Dr	3	3649	Palmview	26.229848 -98.411912	26.229988 -98.412771
Maria St	3	2685	Mission	26.261482 -98.341796	26.258998 -98.342219
Mendez Ln	3	2984	Mission	26.265472 -98.333682	26.265749 -98.335752
Silverado Dr E	3	3422	Palmview	26.237531 -98.405385	26.234864 -98.405870
Silverado Dr	3	3421	Palmview	26.234866 -98.405938	26.234970 -98.406563
Silverado Dr W	3	3423	Palmview	26.234992 -98.406599	26.237642 -98.406153
Unknown	3	3430	Palmview	26.237482 -98.404936	26.234979 -98.405386
Cavazos St	3	2682	Mission	26.260911 -98.337035	26.264240 -98.336403
Alejandro St	3	2683	Mission	26.261037 -98.337944	26.264383 -98.337394
Floyd Cir	3	3722	Palmview	26.243192 -98.415912	26.244944 -98.415129
Golf Dr	3	3720	Palmview	26.244224 -98.415427	26.245464 -98.407996
Couples Cir	3	3721	Palmview	26.245198 -98.412119	26.245587 -98.412689
Trevino Dr	3	3076	Palmview	26.245763 -98.409939	26.246738 -98.409786
Norman Dr	3	3075	Palmview	26.246743 -98.409818	26.248252 -98.407508
Nicklus Dr	3	3719	Palmview	26.247332 -98.408909	26.245648 -98.409182
Palmer Dr	3	3718	Palmview	26.247911 -98.408037	26.244485 -98.408167
Western Rd	3	3735	Palmview	26.270274 -98.403528	26.250670 -98.407151
N Moorefield Rd	3	2974	Mission	26.258930 -98.349527	26.284672 -98.345029
Renee Rd	3	2684	Mercedes	26.261380 -98.340974	26.258737 -98.341406
Diosa Ln	3	2982	Mission	26.264678 -98.348509	26.264536 -98.347513
Lucky I St	3	2980	Mission	26.266506 -98.348183	26.265888 -98.344103
Earth Ln	3	2981	Mission	26.265582 -98.348343	26.265448 -98.347354
Lucky J St	3	2935	Mission	26.267437 -98.348024	26.266811 -98.343686
Eagle Dr	3	3733	Palmview	26.252285 -98.409088	26.252595 -98.411493
Liberty St	3	2934	Mission	26.268328 -98.347860	26.267691 -98.343462
Lost Greens Dr	3	3734	Palmview	26.252256 -98.409060	26.252599 -98.411499
Long Dr	3	3724	Palmview	26.251470 -98.411189	26.250665 -98.407184
Par Dr	3	3729	Palmview	26.250725 -98.409950	26.251015 -98.412028
Putter Dr	3	3730	Palmview	26.250112 -98.409429	26.250428 -98.411752
Birdie Dr	3	3731	Palmview	26.249673 -98.410482	26.250107 -98.412497
Golf Dr	3	3732	Palmview	26.252355 -98.409652	26.249973 -98.413460
Broken Tee	3	3728	Palmview	26.252427 -98.412913	26.251818 -98.409768
Fairway Dr	3	3726	Palmview	26.251028 -98.415051	26.253313 -98.412641
Golf Dr	3	3727	Palmview	26.251006 -98.415038	26.250318 -98.414063
Bogey Dr	3	3725	Palmview	26.250957 -98.408643	26.250632 -98.414501
East Bogey Dr	3	4332	Palmview	26.248028 -98.410937	26.250870 -98.408673
Birdie Dr	3	4333	Palmview	26.248942 -98.407390	26.249392 -98.408998
Western Rd	3	3723	Palmview	26.250643 -98.407166	26.238641 -98.409131
Happy St	3	3362	Mission	26.269688 -98.347629	26.269123 -98.343211
Jose De La Cruz Rd	3	2860	Mission	26.274925 -98.346766	26.275484 -98.350693
Tower Rd	1	1769	Edinburg	26.237260 -98.101851	26.262139 -98.097605
Trenton Rd	1	1687	Edinburg	26.249591 -98.083582	26.252342 -98.103341
Trenton Rd	1	1688	Edinburg	26.252346 -98.103330	26.252772 -98.106294

Alberta Rd	1	1674	Edinburg	26.244625 -98.100560	26.242284 -98.083719
Roosevelt Rd	1	876	Donna	26.235106 -98.084996	26.234476 -98.077699
Anacua Dr	1	4921	Donna	26.234498 -98.080498	26.237422 -98.079986
Acacia Cir	1	4830	Donna	26.234856 -98.083014	26.234858 -98.083013
Cherokee Dr	1	2288	Donna	26.237942 -98.085697	26.235294 -98.086124
Mohawk Ave	1	2290	Donna	26.236553 -98.085946	26.236779 -98.087510
Cheyenne	1	2289	Donna	26.237949 -98.085692	26.238199 -98.087266
Cuevas Rd	1	2541	Donna	26.235887 -98.090443	26.239273 -98.089931
Sugarland Rd	1	2540	Donna	26.236084 -98.091815	26.239571 -98.091196
Roman Cir	1	2287	Donna	26.236205 -98.092715	26.239357 -98.092317
Tejano Dr	1	2200	Donna	26.239139 -98.104958	26.237950 -98.105158
Tejano Dr	1	2199	Donna	26.238665 -98.101621	26.239112 -98.104904
Brazil Ave	1	1681	Donna	26.239701 -98.101443	26.240237 -98.105342
Argentine Road	1	1683	Donna	26.240599 -98.101298	26.241130 -98.105165
Argentine Ct	1	1791	Donna	26.241053 -98.104788	26.240202 -98.104940
Cambridge Ln	1	2189	Edinburg	26.242142 -98.113176	26.241940 -98.111820
Seneca Dr	1	2235	Edinburg	26.254910 -98.074959	26.254802 -98.074191
Mirage Dr	1	2231	Edinburg	26.256214 -98.074775	26.253505 -98.075239
El Bosque Dr	1	2192	Edinburg	26.244038 -98.112860	26.243539 -98.109311
Skyhawk Dr	1	2230	Edinburg	26.253462 -98.075278	26.253695 -98.080644
Wassell St	1	2270	Edinburg	26.244176 -98.110335	26.245025 -98.110198
Bonanza Dr	1	2229	Edinburg	26.253742 -98.080677	26.256435 -98.080219
Wassell Cir	1	2269	Edinburg	26.245125 -98.110621	26.245697 -98.108629
Citation Dr	1	2234	Edinburg	26.253528 -98.079375	26.256274 -98.078901
Socata Dr	1	2233	Edinburg	26.256231 -98.077561	26.253460 -98.078032
Malibu Dr	1	2232	Edinburg	26.253463 -98.076678	26.256245 -98.076192
Wassell Dr	1	1909	Edinburg	26.244032 -98.109338	26.244882 -98.109190
Dandelion St	1	5019	Edinburg	26.245489 -98.106554	26.248214 -98.106083
Peony St	1	5017	Edinburg	26.248315 -98.106576	26.248097 -98.105035
Tulip St	1	5018	Edinburg	26.248707 -98.104772	26.245353 -98.105553
Mimosa St	1	5020	Edinburg	26.246600 -98.105367	26.246734 -98.106310
Sabinito Dr	1	2271	Edinburg	26.245209 -98.105197	26.242188 -98.105744
Vanessa Dr	1	2272	Edinburg	26.242185 -98.105741	26.242237 -98.106326
Helen St	1	1685	Edinburg	26.245235 -98.104635	26.248701 -98.104054
Helen St	1	4892	Edinburg	26.248702 -98.104050	26.249737 -98.103780
West Dr	1	4893	Edinburg	26.249722 -98.103727	26.249209 -98.099842
Poker St	1	4891	Edinburg	26.246785 -98.100237	26.247343 -98.104242
Beduino Ave	1	2201	Edinburg	26.240122 -98.101322	26.239595 -98.097513
Jam Square	1	1690	Edinburg	26.249632 -98.083467	26.250102 -98.086901
Buckles Blvd	1	1693	Edinburg	26.251823 -98.083165	26.252300 -98.086492
Jessica LN	1	1692	Edinburg	26.250965 -98.083257	26.251444 -98.086658
Derby Ave	1	1691	Edinburg	26.250094 -98.083413	26.250574 -98.086804
Carl St	1	2259	Edinburg	26.249783 -98.085152	26.246710 -98.085685
Esperanza Dr	1	2258	Edinburg	26.251447 -98.097036	26.248608 -98.097522
CR 1100	1	2539	Edinburg	26.251011, -98.093897	26.248807, -98.094265
Fe Dr	1	2257	Edinburg	26.251666 -98.098485	26.248819 -98.098978
Haven Ln	1	3961	Edinburg	26.250397 -98.094740	26.247489 -98.095001

Haven Ln	1	4210	Edinburg	26.247506 -98.094989	26.243929 -98.095362
Mile 4 W	1	1252	Edcouch	26.340647, -97.976292	26.334645, -97.975802
Cessna Ave	1	2245	Edinburg	26.252519 -98.104334	26.259664 -98.103109
San Jose Ave	1	2275	Edinburg	26.243757 -98.094109	26.246979 -98.093569
Centurion Ave	1	2246	Edinburg	26.257675 -98.102423	26.257960 -98.104440
FM 1925 Spur	1	1002	Edcouch	26.314375, -97.997848	26.311798, -97.993594
Skylark Ave	1	2247	Edinburg	26.254327 -98.102994	26.254609 -98.104994
Palmeras Cir	1	1684	Edinburg	26.242368 -98.100997	26.241466 -98.101146
Mesquite Ave	1	2273	Edinburg	26.244246 -98.097537	26.246277 -98.097186
Violeta Dr	1	2274	Edinburg	26.243961 -98.096116	26.240486 -98.096708
Leigh Ann Dr	1	2010	Edinburg	26.250153 -98.106797	26.250700 -98.111731
Alanzo Ave	1	2009	Edinburg	26.252702 -98.106324	26.249319 -98.106907
Romo Dr	1	4841	Edinburg	26.242667 -98.086802	26.240007 -98.087260
Cherokee Dr	1	4840	Edinburg	26.242432 -98.085090	26.239782 -98.085585
Cindy Windy Dr	1	4839	Edinburg	26.240098 -98.088105	26.239790 -98.085600
Pancho Villa Dr	1	4169	Edinburg	26.257668 -98.108538	26.257543 -98.107678
Pancho Villa Dr	1	2197	Edinburg	26.257940 -98.110488	26.257669 -98.108555
San Marcos St	1	2194	Edinburg	26.252249 -98.111462	26.251751 -98.107927
El Ahijado	1	2286	Edinburg	26.236738 -98.096455	26.240207 -98.095863
Illusivo Ave	1	2198	Edinburg	26.238389 -98.101618	26.237982 -98.098802
Abram Rd	3	3713	Palmview	26.243290 -98.397624	26.236932 -98.398671
Pita Dr	1	4886	Edinburg	26.242022 -98.082501	26.239370 -98.082958
Cindy windy Dr	1	4885	Edinburg	26.239313 -98.082941	26.238937 -98.080642
Citrus Loop	3	2750	Palmview	26.241193 -98.394581	26.239612 -98.394155
Wynn Dr	1	4884	Edinburg	26.239086 -98.081378	26.241826 -98.080909
Palm St	3	3568	Palmview	26.240480 -98.394711	26.240371 -98.394049
Wynn Dr	1	4453	Edinburg	26.241992 -98.081291	26.245106 -98.080758
Cole Dr	1	4848	Edinburg	26.245440 -98.086179	26.245301 -98.085184
Payton Ave	1	4849	Edinburg	26.242669 -98.086154	26.245349 -98.085694
Citrus Lp	3	2749	Palmhurst	26.239524 -98.393473	26.241410 -98.393153
County Road 2384	3	3405	Palmview	26.238740 -98.387951	26.240084 -98.387717
Melo's Ln	3	3308	Palmview	26.238582 -98.386814	26.240770 -98.386610
Alberta Rd	1	1672	Edinburg	26.241717 -98.076453	26.241794 -98.080333
Alberta Rd	1	1673	Edinburg	26.241824 -98.080479	26.242257 -98.083541
Citrus Lp	3	2751	Palmview	26.243209 -98.390907	26.244008 -98.393467
Country Cir	3	3393	Palmview	26.240746 -98.391350	26.240006 -98.391482
Taylor Rd	3	2752	Palmview	26.244401 -98.390642	26.243955 -98.387494
Magdalena Cir	1	4868	Edinburg	26.258735 -98.096532	26.258517 -98.094958
Ann St	1	1682	Edinburg	26.255306 -98.101105	26.255004 -98.098846
Palm Creek Blvd	3	2755	Palmview	26.248830 -98.389878	26.247822 -98.382805
Spring Glen	3	2764	Palmview	26.249063 -98.389888	26.249889 -98.395607
Beaumont Ave	1	1700	Edinburg	26.249419 -98.111935	26.249017 -98.109156
Dallas Ave	1	1702	Edinburg	26.248997 -98.109137	26.248177 -98.109271
Spring Branch Dr	3	3039	Palmview	26.248520 -98.393318	26.249516 -98.393151
Franchesca St	1	1701	Edinburg	26.248169 -98.109277	26.248541 -98.112072
Frontier Promenade Dr	3	2759	Palmview	26.248018 -98.390075	26.248436 -98.394088
Chicago	1	2193	Edinburg	26.248344 -98.110493	26.249163 -98.110353

Rose St	3	3698	Palmview	26.241018 -98.408719	26.240979 -98.408421
Rose	3	3686	Palmview	26.241857 -98.408206	26.239877 -98.408547
Ash	3	3681	Palmview	26.241918 -98.408184	26.241577 -98.405309
E Trenton Rd	1	2360	Edinburg	26.249018 -98.075198	26.248985 -98.077016
Tulip	3	3682	Palmview	26.241563 -98.405267	26.241159 -98.402430
Ash St	3	3697	Palmview	26.241131 -98.402385	26.239140 -98.402742
Ash	3	3685	Palmview	26.239107 -98.402767	26.239501 -98.405621
Carnation	3	3684	Palmview	26.239498 -98.405629	26.239932 -98.408549
Peony St	3	3687	Palmview	26.241888 -98.407740	26.239839 -98.408094
Orchid St	3	3688	Palmview	26.239786 -98.407610	26.241825 -98.407250
Iris St	3	3690	Palmview	26.239663 -98.406649	26.241684 -98.406289
Daisy St	3	3691	Palmview	26.241611 -98.405812	26.239598 -98.406160
Pine St	3	3692	Palmview	26.241469 -98.404789	26.239458 -98.405128
Oak St	3	3693	Palmview	26.239386 -98.404648	26.241413 -98.404310
Maple St	3	3694	Palmview	26.241340 -98.403823	26.239331 -98.404173
Elm St	3	3695	Palmview	26.241281 -98.403340	26.239261 -98.403689
Birch	3	3696	Palmview	26.241222 -98.402857	26.239196 -98.403210
Lily St	3	3689	Palmview	26.241682 -98.406288	26.239727 -98.407125
E Goodwin Rd	3	3280	Palmview	26.252621 -98.381928	26.238235 -98.384471
Main Blvd	3	3680	Palmview	26.242141 -98.405173	26.238202 -98.405848
Paul Day Blvd	3	3699	Palmview	26.239250 -98.403935	26.237976 -98.404158
Unknown	3	3661	Palmview	26.240984 -98.384007	26.241263 -98.385943
Monroe St	3	3669	Palmview	26.242586 -98.407945	26.241855 -98.402704
Daisy Ridge	3	3924	Palmview	26.242102 -98.383816	26.243670 -98.386386
Mesquite	3	3923	Palmview	26.243674 -98.386391	26.243290 -98.383612
Liberty Dr	3	2766	Palmview	26.253622 -98.389084	26.253675 -98.391689
Quail Crest Dr	3	2765	Palmview	26.252447 -98.389294	26.253107 -98.392956
Johnson St	3	3671	Palmview	26.244594 -98.402211	26.241867 -98.402697
Ford	3	3577	Palmview	26.244633 -98.402221	26.245367 -98.407451
North Point Blvd	3	2757	Palmview	26.250032 -98.386785	26.249418 -98.382523
Jamie Cir	3	3407	Palmview	26.251401 -98.387930	26.249804 -98.388197
Gracie Ln	3	2756	Palmview	26.251582 -98.389389	26.248442 -98.387073
Owassa Dr	1	1679	Edinburg	26.244228 -98.150885	26.235141 -98.085477
Samantha Dr	3	3406	Palmview	26.250629 -98.382349	26.251117 -98.385525
Mesquite Lp	3	2758	Palmview	26.251640 -98.382135	26.252662 -98.381955
Mile 2 North	3	3156	Palmview	26.255807 -98.381404	26.255422 -98.395469
Tyler St	3	3670	Palmview	26.242580 -98.407943	26.245349 -98.407463
Wilson St	3	3672	Palmview	26.242471 -98.407200	26.245279 -98.406710
Reagan St	3	3673	Palmview	26.242365 -98.406446	26.245179 -98.405966
Palmarina St	3	3157	Palmview	26.255259 -98.390290	26.255953 -98.391957
Polk St	3	3674	Palmview	26.242257 -98.405696	26.245421 -98.405148
Woodrow St	3	3675	Palmview	26.242145 -98.404937	26.244942 -98.404449
Nixon	3	3679	Palmview	26.243189 -98.405513	26.243080 -98.404807
Kennedy St	3	3676	Palmview	26.242044 -98.404193	26.244836 -98.403703
Petura Trail	3	3678	Palmview	26.243914 -98.407753	26.243979 -98.408206
Jefferson St	3	3677	Palmview	26.241945 -98.403440	26.244750 -98.402948
S Kountry Loop	3	2767	Mission	26.255642 -98.388675	26.256431 -98.388540

Garcia Ln	3	3037	Mission	26.256326 -98.387960	26.255569 -98.388102
Avenue B	3	2769	Mission	26.259329 -98.388017	26.258875 -98.384594
Avenue A	3	2768	Mission	26.258336 -98.388199	26.257859 -98.384766
Munos CIR	3	3160	Mission	26.266066 -98.379603	26.265343 -98.379738
Orange St	3	3701	Palmview	26.237787 -98.398952	26.240548 -98.398463
Orange	3	3716	Palmview	26.240564 -98.398441	26.240698 -98.399399
Lemon St	3	3704	Palmview	26.240661 -98.399425	26.237952 -98.399910
Orange	3	3703	Palmview	26.240615 -98.398940	26.237855 -98.399437
Lime St	3	3702	Palmview	26.237937 -98.399912	26.237769 -98.398944
Martin St	3	3712	Palmview	26.238456 -98.398851	26.238679 -98.400313
Eastview Circle	3	2754	Palmview	26.248103 -98.382695	26.245512 -98.383157
Goodwin Acres Rd	3	2770	Palmview	26.244574 -98.380250	26.237803 -98.381445
Taurus Ln	3	3159	Mission	26.260404 -98.380596	26.260855 -98.383762
Carla St	3	3158	Mission	26.256893 -98.381211	26.257061 -98.384742
El Jardin Dr	3	3567	Palmview	26.244831 -98.377152	26.245556 -98.380728
Apple St	3	3705	Palmview	26.240747 -98.399974	26.238309 -98.400408
Apricot St	3	3700	Palmview	26.240778 -98.399951	26.241005 -98.401896
Mile 1 1/4 N Dr	3	3080	Palmview	26.238933 -98.366235	26.239430 -98.369677
Cherry St	3	3709	Palmview	26.240977 -98.401901	26.238607 -98.402314
Coconut St.	3	3708	Palmview	26.238576 -98.402306	26.238302 -98.400411
Pear St	3	3706	Palmview	26.240823 -98.400443	26.238405 -98.400878
Plum St	3	3707	Palmview	26.240896 -98.400936	26.238465 -98.401361
Peach St	3	3710	Palmview	26.240961 -98.401423	26.238531 -98.401843
Banana St	3	3711	Palmview	26.239107 -98.400731	26.239030 -98.400308
Tiffany Dr	3	2772	Palmview	26.242496 -98.364879	26.243096 -98.369037
E Goodwin Rd	3	3280	Mission	26.252468 -98.381909	26.266859 -98.379414
Yawn Dr	3	2991	Palmview	26.241951 -98.398404	26.242416 -98.401702
Relax Dr	3	2992	Palmview	26.243477 -98.399017	26.242100 -98.399252
Snooze Dr	3	2990	Palmview	26.243371 -98.398159	26.243839 -98.401454
Doze Dr	3	2680	Palmview	26.244029 -98.398034	26.244510 -98.401332
N Drowse Dr	3	2988	Palmview	26.241282 -98.398503	26.244029 -98.398020
Nap Dr	3	2989	Palmview	26.241273 -98.398532	26.241739 -98.401831
Siesta Dr	3	2681	Palmview	26.244508 -98.401346	26.241756 -98.401836
Dream St	3	3575	Palmview	26.242780 -98.399158	26.243126 -98.401579
Dream St	3	3576	Palmview	26.242618 -98.399134	26.242425 -98.397814
E Esperanza Ave	3	3651	Palmview	26.244976 -98.364601	26.245543 -98.368604
W Esperanza Ave	3	3291	Palmview	26.245558 -98.368677	26.246168 -98.372992
Ramsey Dr	3	3293	Palmview	26.246077 -98.372588	26.245299 -98.372704
JJ Dr	3	3290	Palmview	26.245300 -98.372707	26.244737 -98.368817
Paula St	3	3046	Mission	26.237780 -98.361421	26.238323 -98.365416
S Joshua Dr	3	3045	Mission	26.239982 -98.360978	26.239413 -98.357076
Joshua Dr	3	3044	Mission	26.240701 -98.360912	26.241236 -98.364687
Peña Blanca N	3	2948	Palmview	26.248771 -98.368100	26.249275 -98.371590
Ramsey Dr	3	3363	Palmview	26.249276 -98.371607	26.248782 -98.371788
Del Norte Sub D	3	3079	Palmview	26.249467 -98.367918	26.248943 -98.364259
Puesta del Sol Ave	3	3015	Palmview	26.246790 -98.397035	26.247520 -98.402170
Lucero Ct	3	3016	Palmview	26.246076 -98.397165	26.245928 -98.400781

Loma Linda St	3	3018	Palmview	26.245414 -98.397280	26.246093 -98.402036
Avenida del Paseo St	3	3019	Palmview	26.244735 -98.397397	26.245433 -98.402158
Naranjo St	3	2771	Palmview	26.252282 -98.367491	26.252853 -98.371546
Thompson Rd	3	3292	Palmview	26.254677 -98.366995	26.254123 -98.363242
Mile 3 Rd	3	3489	Penitas	26.278839, -98.445223	26.277353, -98.434890
Arroyo Claro Dr	3	3020	Palmview	26.247450 -98.401826	26.245436 -98.402166
Madrugada Dr	3	3017	Palmview	26.246445 -98.399770	26.245131 -98.399995
Blanca Cir	3	3653	Mission	26.262104 -98.362610	26.261263 -98.363118
Peña Cir	3	3654	Mission	26.262307 -98.364028	26.261358 -98.364199
Mile 3 Rd	3	3602	Penitas	26.277361, -98.434889	26.276543, -98.430459
Mile 3 Rd	3	3603	Penitas	26.276543, -98.430459	26.272592, -98.419425
Mile 3 Rd	3	3005	Penitas	26.272577, -98.419314	26.267932, -98.386617
Mari-Lee Ave	3	3652	Mission	26.262734 -98.365562	26.262110 -98.362630
Toronjales St	3	3318	Palmview	26.249147 -98.396638	26.248087 -98.407488
Mari-lee Ave	3	2696	Mission	26.260979 -98.357315	26.260414 -98.353405
W 45th st	3	2699	Palmview	26.253597 -98.358655	26.254091 -98.362072
Shirley Dr	3	3566	Palmview	26.253630 -98.362235	26.255962 -98.361819
Pradera Ln	3	3021	Palmview	26.250657 -98.401247	26.249985 -98.396480
46th St	3	2697	Palmview	26.254947 -98.358420	26.255419 -98.361846
El Lucero Ln	3	3025	Palmview	26.252177 -98.400940	26.254451 -98.395686
Bentsen Palm Dr	3	3926	Palmview	26.264841 -98.365256	26.237899 -98.369975
Claraboya Ln	3	3024	Palmview	26.251736 -98.397873	26.253674 -98.397544
Arco Iris St	3	2700	Palmview	26.252473 -98.358825	26.253066 -98.362961
Claraboya Ln	3	3022	Palmview	26.250521 -98.400049	26.251971 -98.399793
Nabors Rd	3	2701	Palmview	26.251577 -98.358975	26.252146 -98.363044
Limoneros St	3	3316	Palmview	26.250405 -98.401921	26.252207 -98.401592
Datil	3	2702	Mission	26.252316 -98.358800	26.252107 -98.357547
Farmosa	3	2703	Mission	26.250999 -98.357706	26.253033 -98.357339
Buena Vista Dr	3	3023	Palmview	26.251486 -98.396230	26.250180 -98.403603
Graham Ave	3	2704	Mission	26.250668 -98.359193	26.250161 -98.355775
El Descanso St	3	3395	Palmview	26.251517 -98.401724	26.250505 -98.402725
Erin St	3	3033	Mission	26.250158 -98.355742	26.248965 -98.355962
Pinal St	3	3539	Palmview	26.252428 -98.402851	26.252082 -98.404011
Ciruelos St	3	3454	Palmview	26.253129 -98.402047	26.252358 -98.405189
Guayabo St	3	3317	Palmview	26.252361 -98.405144	26.251819 -98.403151
Tamarindo St	3	3397	Palmview	26.251758 -98.405810	26.251223 -98.403444
Ciruelos St	3	3396	Palmview	26.251728 -98.405905	26.251025 -98.406147
David Ave	3	2708	Palmview	26.243701 -98.355602	26.244447 -98.355450
Manzanos St	3	3315	Palmview	26.250385 -98.401957	26.250990 -98.406135
Cody Ave	3	3032	Palmview	26.248971 -98.355987	26.247916 -98.359123
Gracie Ave	3	3031	Palmview	26.249301 -98.355914	26.249788 -98.359373
Barnick St	3	3608	Palmview	26.249409 -98.356848	26.248636 -98.356978
Bailey St	3	2695	Mission	26.249596 -98.358325	26.248078 -98.358595
Abram Rd	3	3713	Palmview	26.243275 -98.397621	26.297511 -98.388140
2 Mile North	3	3014	Palmview	26.250329 -98.382322	26.248476 -98.355487
La Homa Rd	3	3925	Mission	26.263641 -98.356909	26.239543 -98.361087
Volcano Ave	3	3604	Penitas	26.274637 -98.428124	26.266110 -98.436557

Bella Vista Ave	3	4616	Palmview	26.233146 -98.358146	26.232762 -98.355494
Paula Dr	3	4261	Palmview	26.236271 -98.357592	26.235711 -98.353649
Rachel Dr	3	2773	Palmview	26.242187 -98.364544	26.239567 -98.357847
Tangerine Ave	3	2707	Mission	26.245030 -98.356800	26.246436 -98.356408
Ignite St	3	3105	Penitas	26.252953 -98.444510	26.253644 -98.449147
N 11 St	3	3178	Penitas	26.253651 -98.449149	26.254954 -98.448938
Jade St	3	3106	Penitas	26.254327 -98.444249	26.254978 -98.448909
Daniel Ave	3	2710	Palmview	26.243333 -98.353037	26.243801 -98.352964
Dudley Ave	3	2709	Palmview	26.243525 -98.354320	26.244119 -98.354207
Ricardo Ave	3	2705	Mission	26.245881 -98.364051	26.244882 -98.356132
Cyndy Ave	3	2706	Mission	26.245331 -98.359320	26.246872 -98.359038
Tiffany Ave	3	3034	Mission	26.245174 -98.358060	26.247781 -98.355608
Volcano Ave	3	3336	Penitas	26.266130 -98.436604	26.266889 -98.441991
Uranium St	3	3337	Penitas	26.265698 -98.442213	26.264926 -98.436810
Sapphire St	3	3338	Penitas	26.264340 -98.442447	26.263573 -98.437079
Ruby St	3	3339	Penitas	26.263141 -98.442662	26.262382 -98.437297
Quartz St	3	3340	Penitas	26.261941 -98.442864	26.261186 -98.437526
Platinum St	3	3341	Penitas	26.260745 -98.443072	26.259994 -98.437740
Opal St	3	3342	Penitas	26.259535 -98.443288	26.258783 -98.437959
Nugget St	3	3343	Penitas	26.258336 -98.443495	26.257583 -98.438154
Marble Ct	3	3344	Penitas	26.257129 -98.443695	26.256395 -98.438430
E Esperanza Ave	3	3035	Palmview	26.243217 -98.352331	26.244869 -98.364307
W Mile 2 Rd	3	3081	Palmview	26.248496 -98.355430	26.248191 -98.351437
N Shuerbach Rd	3	2690	Palmview	26.251150 -98.355016	26.251323 -98.356336
Nacona St	3	2691	Palmview	26.252326 -98.354821	26.252524 -98.356152
Hollis St	3	2693	Palmview	26.253767 -98.355899	26.253438 -98.352669
Tiffany Dr	3	3609	Palmview	26.255475 -98.354202	26.255216 -98.352292
Elizabeth St	3	2694	Palmview	26.254591 -98.354373	26.254299 -98.352433
Lusby St	3	2688	Palmview	26.251890 -98.354839	26.251343 -98.350912
W Pola St	3	2689	Palmview	26.250440 -98.351074	26.250701 -98.353011
Hilda St	3	2692	Palmview	26.252790 -98.354678	26.252516 -98.352761
Sapphire St	3	3117	Penitas	26.264978 -98.447054	26.264345 -98.442514
Ruby St	3	3116	Penitas	26.263149 -98.442729	26.263789 -98.447230
Nickole St	3	4653	Penitas	26.298639 -98.463238	26.299341 -98.463112
Quartz St	3	3115	Penitas	26.261960 -98.442924	26.262598 -98.447448
Nickole St	3	4638	Penitas	26.299370 -98.463092	26.300583 -98.462902
Platinum St	3	3114	Penitas	26.261484 -98.448314	26.260764 -98.443130
Opal St	3	3113	Penitas	26.260191 -98.447869	26.259547 -98.443338
Austen St	3	4634	Penitas	26.300553 -98.462928	26.299091 -98.452506
Nugget St	3	3112	Penitas	26.258994 -98.448082	26.258350 -98.443554
Piñata St	3	4814	Penitas	26.300461 -98.461940	26.301987 -98.461670
Marble Ct	3	3107	Penitas	26.257786 -98.448229	26.257149 -98.443761
Pachanga St	3	4815	Penitas	26.300090 -98.459348	26.301626 -98.459084
Sombrero St	3	4816	Penitas	26.299475 -98.455036	26.301015 -98.454770
Austen St	3	4633	Penitas	26.301854 -98.476202	26.299972 -98.463024
N Breyfogle Rd	3	3163	Palmview	26.243753 -98.356292	26.238728 -98.357173
Travis St	3	4636	Penitas	26.300933 -98.469667	26.301599 -98.469550

Isaiah St	3	4635	Penitas	26.301206 -98.471833	26.300594 -98.471932
Isaiah St	3	4651	Penitas	26.300630 -98.471927	26.299155 -98.472198
Elva St	3	4652	Penitas	26.298529 -98.467836	26.300024 -98.467575
Elva St	3	4637	Penitas	26.300589 -98.467481	26.299984 -98.467583
N. 11th St	3	3177	Penitas	26.257820 -98.448284	26.265679 -98.446931
Arboledas Dr	3	3119	Penitas	26.273021 -98.440938	26.272354 -98.436210
La Fuente Dr	3	3118	Penitas	26.271977 -98.441112	26.271234 -98.435868
La Plaza Cir	3	3176	Penitas	26.270174 -98.438818	26.269875 -98.436532
La Plaza Dr	3	3175	Penitas	26.268974 -98.439057	26.272643 -98.438416
Mile 2 N	3	3093	Penitas	26.269281 -98.441570	26.268569 -98.436346
White Rock St	3	3335	Penitas	26.268500 -98.441698	26.267734 -98.436345
Mile 4 Road	3	4655	Penitas	26.300493 -98.476431	26.297515 -98.456073
Maribel Street	3	4654	Penitas	26.298149 -98.460604	26.297156 -98.460774
Maribel Street	3	4817	Penitas	26.297171 -98.460768	26.296741 -98.460846
Brittney Street	3	4818	Penitas	26.297147 -98.462722	26.296338 -98.458946
N Breyfogle Rd	3	2851	Palmview	26.243762 -98.356282	26.291671 -98.347796
Circle 6th St	3	4656	Penitas	26.297089 -98.452834	26.299072 -98.452482
Mile 4 Rd	3	3095	Penitas	26.296230 -98.462833	26.295179 -98.437080
Desperado Dr	3	3103	Penitas	26.290915 -98.437826	26.286670 -98.438571
Tabasco Rd	3	3851	Penitas	26.246529 -98.465053	26.251965 -98.463935
Pino St	3	3941	Penitas	26.273586 -98.440813	26.273283 -98.438637
Ozuna St	3	3942	Penitas	26.273295 -98.438611	26.275510 -98.438217
Pino St	3	3099	Penitas	26.273609 -98.440876	26.274332 -98.445982
Gonzalez Cir	3	3101	Penitas	26.276403 -98.440395	26.277478 -98.440202
Garcia St	3	3100	Penitas	26.275305 -98.440524	26.275048 -98.438789
Rodriguez St	3	3096	Penitas	26.281288 -98.439522	26.281591 -98.433970
Maria Dr	3	3102	Penitas	26.281376 -98.440051	26.282434 -98.439863
Salinas DR	3	3097	Penitas	26.280247 -98.434198	26.281000 -98.439517
Camino Real Blvd	3	4435	Penitas	26.281969 -98.436561	26.283778 -98.439039
Blue Bird Ave	3	3334	Penitas	26.291665 -98.437635	26.290923 -98.432395
Quail Ave	3	3333	Penitas	26.293048 -98.437402	26.292291 -98.432143
Blue Jay Ave	3	3332	Penitas	26.294418 -98.437158	26.293671 -98.431910
Cedar St	3	3627	Penitas	26.276597 -98.434779	26.275990 -98.430518
Liberty Blvd	3	3628	Penitas	26.272233 -98.435589	26.277245 -98.434705
Ash St	3	3630	Penitas	26.273492 -98.431539	26.274021 -98.435242
Birch St	3	3629	Penitas	26.275322 -98.435020	26.274968 -98.432438
Giles Rd	3	3612	Penitas	26.274784 -98.430730	26.276470 -98.430409
Mile 4 1/2 Rd	3	3666	Penitas	26.299416 -98.436344	26.299821 -98.438760
Liberty Blvd	3	3109	Penitas	26.277334 -98.434688	26.282565 -98.433841
Liberty Blvd	3	3108	Penitas	26.282476 -98.433845	26.295425 -98.431576
Fir Ave	3	3624	Penitas	26.281280 -98.433964	26.280957 -98.431665
Tom Gil Rd	3	3104	Penitas	26.261031 -98.443031	26.332808 -98.430432
Ebony Ave	3	3625	Penitas	26.280103 -98.434170	26.279667 -98.431148
Dogwood Ave	3	3626	Penitas	26.278780 -98.434406	26.278269 -98.430808
Circle 6 E	3	3600	Penitas	26.303746 -98.435613	26.310377 -98.439840
Giles Rd	3	3543	Penitas	26.274653 -98.428113	26.276247 -98.427716
CR 2461	3	3008	Penitas	26.276240 -98.427733	26.276742 -98.430344

5 1/2 Mile Rd	3	3476	Penitas	26.308045 -98.434790	26.306177 -98.422160
Giles Rd	3	2897	Penitas	26.297182 -98.424134	26.331069 -98.417799
Giles Rd	3	3642	Penitas	26.277255 -98.430244	26.285768 -98.428678
Giles Rd	3	3641	Penitas	26.277309 -98.430233	26.276530 -98.430401
5 1/2 Mile Rd	3	3476	Penitas	26.307839 -98.434986	26.308052 -98.440249
Mile 4 Rd	3	3640	Penitas	26.286927 -98.416868	26.287547 -98.421451
Liberty Blvd	3	3108	Penitas	26.295538 -98.431555	26.303742 -98.435539
Unknown	3	2898	Penitas	26.298165 -98.431112	26.297146 -98.423933
Circle 6 N	3	3329	Penitas	26.312449 -98.439465	26.313026 -98.443609
Circle 6 N	3	3329	Penitas	26.313031 -98.443618	26.314068 -98.449841
Mile 5 1/2 Rd	3	4352	Penitas	26.314057 -98.449882	26.314586 -98.453548
Mile 5 1/2 Rd	3	4353	Penitas	26.312450 -98.439464	26.312318 -98.434087
Circle 6 E	3	3643	Penitas	26.312285 -98.439535	26.310401 -98.439803
Circle 6 S	3	3852	Penitas	26.310415 -98.439867	26.311903 -98.450207
Circle 6 St S	3	3644	Penitas	26.311920 -98.450267	26.312149 -98.451971
Circle 6 W	3	3477	Penitas	26.314050 -98.449866	26.309781 -98.450608
Salida Del Sol Dr	3	3331	Penitas	26.312838 -98.442011	26.334021 -98.438276
Iowa Rd	3	3636	Penitas	26.329926 -98.409344	26.272601 -98.419354
Las Jaras St	3	5176	Penitas	26.279721 -98.418078	26.279191 -98.414447
Mi Vida St	3	5175	Penitas	26.279166 -98.414409	26.280430 -98.414195
El Sombrero St	3	5177	Penitas	26.280388 -98.414234	26.280923 -98.417858
Amor Del Sol Street	3	5174	Penitas	26.282450 -98.413579	26.283119 -98.417475
Date Palm Dr	3	4263	Penitas	26.317381 -98.444517	26.313394 -98.445223
Date Palm Dr	3	3484	Penitas	26.317441 -98.444499	26.332020 -98.441950
W Mile 4 Rd	3	3639	Penitas	26.286917 -98.416821	26.284439 -98.399381
Rolando Dr	3	3536	Penitas	26.285140 -98.404416	26.283842 -98.404645
Leilahni Dr	3	3535	Penitas	26.285336 -98.405824	26.284220 -98.406020
Kayleen Dr	3	3534	Penitas	26.285524 -98.407219	26.284428 -98.407421
Queen Palm Dr	3	3483	Penitas	26.317199 -98.445858	26.334551 -98.442809
Queen Palm Dr	3	4264	Penitas	26.317210 -98.445881	26.314779 -98.446302
La Sombra St	3	5096	Penitas	26.284392 -98.412399	26.283763 -98.408456
Lupita Uribe St	3	5095	Penitas	26.282539 -98.408678	26.283131 -98.412484
El Sueno St	3	5093	Penitas	26.281788 -98.412643	26.281319 -98.408864
Las Luna St	3	5094	Penitas	26.281771 -98.412767	26.284273 -98.412283
Gooch Rd	3	4440	Penitas	26.289768 -98.407351	26.289236 -98.403545
Leilahni Dr	3	4441	Penitas	26.289455 -98.404944	26.290213 -98.404802
Freedom Ave	3	4690	Penitas	26.291421 -98.407118	26.292037 -98.411455
Glory Ave	3	4691	Penitas	26.291732 -98.409172	26.292462 -98.409040
Washington Palm Dr	3	3482	Penitas	26.317436 -98.447160	26.334703 -98.444080
Washington Palm Dr	3	4265	Penitas	26.313767 -98.447817	26.317430 -98.447171
Bertha Blvd	3	2797	Palmhurst	26.263589 -98.325795	26.263057 -98.321884
Jerry Ave	3	2796	Palmhurst	26.263147 -98.322329	26.265700 -98.321910
Ann Blvd	3	3288	Palmhurst	26.265712 -98.321924	26.266192 -98.325358
Toni Dr	3	2794	Palmhurst	26.265338 -98.325501	26.264855 -98.322064
Nora Ln	3	2795	Palmhurst	26.264459 -98.325630	26.263980 -98.322213
St Francis Ave	3	3464	Alton	26.266117 -98.268340	26.267184 -98.276218
E Mile 4 Rd	3	3464	Alton	26.267226 -98.276323	26.271619 -98.308148

Heliconia Ave	1	None	Edinburg	26.316750 -98.014585	26.318244 -98.014260
Spider Lily Ln	1	None	Edinburg	26.317883 -98.011460	26.318461 -98.015908
Boxwood Ln	1	None	Edinburg	26.318632 -98.015909	26.320586 -98.015559
Crocoshmia Ln	1	None	Edinburg	26.320630 -98.015477	26.319986 -98.011112
Taylor Rd	3	4066	Alton	26.262514 -98.268925	26.280430 -98.265888
CR 2155	3	3572	Alton	26.276670 -98.266553	26.277079 -98.269350
Twa Ln	3	3416	Alton	26.270784 -98.267547	26.271189 -98.268483
Mile 5 Rd	3	3637	Mission	26.301235 -98.414295	26.298770 -98.396861
W Village Blvd	3	3537	Mission	26.282532 -98.399699	26.281875 -98.403735
Edgar St	3	3538	Mission	26.281307 -98.399916	26.281907 -98.404217
Rosebud Dr	3	3607	Mission	26.285163 -98.399242	26.285769 -98.403557
Molly Dr	3	3487	Mission	26.285709 -98.402964	26.286777 -98.402771
Jewel Dr	3	3488	Mission	26.286808 -98.402740	26.286312 -98.399044
Carolina Dr	3	4436	Mission	26.285101 -98.403798	26.285641 -98.403694
6 Mile Rd	3	3007	Mission	26.315920 -98.414408	26.312496 -98.389980
Calle Cenizo	3	3425	Mission	26.329343 -98.411111	26.326856 -98.411553
Calle-Marisol	3	3424	Mission	26.329140 -98.409498	26.329349 -98.411068
El Polvorin Dr	3	4166	Penitas	26.325319 -98.455404	26.336145 -98.453384
El Polvorin Dr	3	5122	Penitas	26.322185 -98.455989	26.325311 -98.455417
El Conejo Dr	3	4164	Penitas	26.324940 -98.453032	26.335829 -98.451097
El Conejo Dr	3	5207	Penitas	26.322219 -98.453513	26.324952 -98.453030
Unknown	3	3361	Mission	26.329140 -98.403762	26.326293 -98.404249
Camino Escondido	3	3360	Mission	26.328875 -98.402042	26.325451 -98.402640
Royal Palm Dr	3	3478	Penitas	26.327318 -98.450759	26.335578 -98.449297
Coconut Palm Dr	3	3479	Penitas	26.326532 -98.449546	26.335395 -98.448005
Coconut Palm Dr	3	4341	Penitas	26.323373 -98.450118	26.326533 -98.449555
Sabal Palm Dr	3	3480	Penitas	26.326298 -98.448276	26.335210 -98.446694
Sabal Palm Dr	3	4340	Penitas	26.326316 -98.448261	26.319801 -98.449413
Durango Rd	3	3004	Mission	26.323336 -98.392570	26.323942 -98.396709
Sabal Palm Dr	3	4347	Penitas	26.319632 -98.449436	26.315632 -98.450121
Sago Palm Dr	3	3481	Penitas	26.315419 -98.448841	26.322144 -98.447700
Sago Palm Dr	3	4267	Penitas	26.322220 -98.447692	26.334956 -98.445400
Chanel Dr	3	5042	Mission	26.276412 -98.400714	26.275878 -98.396902
El Caracol Dr	3	5040	Mission	26.277002 -98.396686	26.275931 -98.396882
Coco Dr	3	5041	Mission	26.277645 -98.400505	26.277058 -98.396690
Estela St	3	5055	Mission	26.273770 -98.399076	26.271544 -98.399473
Manuel St	3	5054	Mission	26.273967 -98.397761	26.274097 -98.401116
Elisa St	3	5056	Mission	26.271812 -98.401510	26.271227 -98.397567
Palmetto Dr	3	4163	Penitas	26.331003 -98.454367	26.330506 -98.450805
Palmetto Dr	3	3530	Penitas	26.330504 -98.450810	26.329223 -98.442455
Christina Dr	3	3486	Penitas	26.332007 -98.441942	26.332249 -98.443207
Dalinda Dr	3	3485	Penitas	26.333420 -98.442993	26.333193 -98.441352
Zarate St	3	3531	Penitas	26.275960 -98.439292	26.277733 -98.438972
Solis St	3	3532	Penitas	26.277651 -98.437996	26.275763 -98.438287
Garza St	3	3533	Penitas	26.277454 -98.436971	26.275662 -98.437314
Miguel St	3	3328	Penitas	26.316606 -98.438787	26.317890 -98.447756
Miguel St	3	4262	Penitas	26.317879 -98.447740	26.317997 -98.449083

Miguel Dr	3	4349	Penitas	26.318008 -98.449087	26.318300 -98.451952
Lilia St	3	5121	Penitas	26.323901 -98.455639	26.323924 -98.454431
Lilia St	3	5206	Penitas	26.323946 -98.454590	26.323629 -98.452004
Lilia St	3	4346	Penitas	26.323622 -98.451992	26.322162 -98.447031
Lilia St	3	3380	Penitas	26.322174 -98.447022	26.320871 -98.438051
Texan Rd N	3	3006	Penitas	26.271319 -98.410601	26.328364 -98.400626
Feliz St	3	None	Mission	26.320183 -98.397069	26.319812 -98.397127
Charro St	3	None	Mission	26.319251 -98.393279	26.319801 -98.397150
Alegre Cir	3	None	Mission	26.318430 -98.393424	26.319005 -98.397452
Fannie Dr	3	4344	Penitas	26.321434 -98.449153	26.321752 -98.451372
Jayden Dr	3	4266	Penitas	26.315264 -98.447572	26.315490 -98.449006
Jayden Dr	3	4351	Penitas	26.315490 -98.449006	26.315997 -98.452515
Colton Dr	3	4350	Penitas	26.316820 -98.449961	26.317163 -98.452309
Jovi Dr	3	4348	Penitas	26.319166 -98.449556	26.319478 -98.451753
Shawntelle Dr	3	4343	Penitas	26.320311 -98.449351	26.320631 -98.451571
Anne Marie Dr	3	4342	Penitas	26.325885 -98.449692	26.326047 -98.450713
La Paloma Dr	3	4168	Penitas	26.326912 -98.452704	26.327239 -98.455038
Palmetto Dr	3	4167	Penitas	26.328626 -98.454853	26.328784 -98.455875
Date Palm Dr	3	3510	Penitas	26.334558 -98.441504	26.336730 -98.441111
Texas Sago Palm Dr	3	2906	Penitas	26.340400 -98.440668	26.340928 -98.444332
Sago Palm Dr	3	3507	Penitas	26.341412 -98.444283	26.335112 -98.445389
Washington Palm Dr	3	3508	Penitas	26.340719 -98.443067	26.334930 -98.444078
Queen Palm Dr	3	3509	Penitas	26.340531 -98.441771	26.334752 -98.442788
Fancy Sago Palm Dr	3	2907	Penitas	26.339459 -98.441940	26.339301 -98.440767
El Conejo Rd	3	2903	Penitas	26.335858 -98.450684	26.341477 -98.449710
La Nutria Rd	3	2902	Penitas	26.336075 -98.452224	26.341722 -98.451238
El Coyote Rd	3	2904	Penitas	26.341933 -98.452728	26.341514 -98.449732
Westside Ln	3	2798	Palmhurst	26.265765 -98.325486	26.266212 -98.328755
El Polvorin Rd	3	2901	Penitas	26.341876 -98.452782	26.336299 -98.453764
Westside Ln	3	4914	Palmhurst	26.266229 -98.328867	26.266772 -98.330852
La Loba Rd	3	2905	Penitas	26.339090 -98.450155	26.339513 -98.453175
Maria Bonita Dr	3	4916	Palmhurst	26.266604 -98.329772	26.265566 -98.329939
Maria Bonita Dr	3	4985	Palmhurst	26.265578 -98.329933	26.263741 -98.330369
La Silla Dr	3	4986	Palmhurst	26.265106 -98.330151	26.265205 -98.330754
Tia Cuca Dr	3	4915	Palmhurst	26.265975 -98.329927	26.266097 -98.330767
Maria Conchita Dr	3	4913	Palmhurst	26.266119 -98.330792	26.266744 -98.330895
Tangerine Dr	3	2985	Palmhurst	26.265524 -98.309271	26.266072 -98.313230
Monica Acres Rd	3	3417	Mission	26.266418 -98.316986	26.266056 -98.314600
Wagon Trail Rd	3	3418	Palmhurst	26.264140 -98.317423	26.263618 -98.313984
Jenna Cir	3	2799	Palmhurst	26.264004 -98.325851	26.264514 -98.329423
Lopez St	3	3462	Palmhurst	26.266653 -98.325271	26.266114 -98.321324
Mile 7 Rd	3	3202	Citrus City	26.338517 -98.469852	26.344090 -98.542863
Flor Dr	3	4987	Palmhurst	26.267144 -98.325251	26.267734 -98.328841
Western Ave	3	3668	Mission	26.327450 -98.391826	26.270103 -98.401845
Alaska Blvd	3	4988	Palmhurst	26.267449 -98.327256	26.267818 -98.327207
Alaska Blvd	3	4650	Palmhurst	26.267849 -98.327205	26.268184 -98.327145
Monica Ave	3	4649	Palmhurst	26.268484 -98.329061	26.267949 -98.325123

Jaras Chinas Rd	3	3201	Citrus City	26.439980 -98.452033	26.338551 -98.469806
Alejandra St	3	3614	Palmhurst	26.268752 -98.324972	26.269221 -98.328444
Carol Ave	3	4910	Palmhurst	26.269769 -98.324744	26.269277 -98.321264
Jerry Ave	3	4911	Palmhurst	26.269277 -98.321234	26.270124 -98.321150
New Mexico St	3	4912	Palmhurst	26.271964 -98.324368	26.270165 -98.321134
Mile 14 Rd	3	3200	McCook	26.445267 -98.490347	26.432791 -98.399845
Alaska Blvd	3	3570	Palmhurst	26.271175 -98.326607	26.274040 -98.326139
New Mexico St	3	2792	Palmhurst	26.271359 -98.327919	26.271012 -98.325317
Idaho St	3	2791	Palmhurst	26.272485 -98.327736	26.272134 -98.325136
Ohio St	3	2790	Palmhurst	26.273661 -98.327516	26.273256 -98.324940
CR 2130	3	3376	Palmhurst	26.274488 -98.329009	26.277779 -98.328505
W Zinnia Ave	3	3445	Palmhurst	26.277814 -98.331612	26.278195 -98.334504
S Los Ebanos Blvd	3	3449	Palmhurst	26.278504 -98.331459	26.274910 -98.332098
Western Palm Dr	3	None	Mission	26.322119 -98.388474	26.321502 -98.384326
Western Palm Dr	3	3348	Mission	26.322702 -98.392633	26.322119 -98.388475
Lantana Blvd	3	3002	Mission	26.323650 -98.392464	26.324635 -98.389929
Lime Dr	3	3365	Mission	26.323175 -98.384196	26.324324 -98.383992
Hanna St	3	3001	Mission	26.323996 -98.390126	26.323742 -98.388705
Hanna St	3	3366	Mission	26.323764 -98.388684	26.323153 -98.384216
Poinsettia Ln	3	3003	Mission	26.323456 -98.390679	26.324601 -98.389947
Tangelo Ln	3	2997	Mission	26.325995 -98.386743	26.324297 -98.387045
Tangerine Ln	3	2996	Mission	26.325877 -98.385915	26.324172 -98.386226
Lemon Ln	3	2921	Mission	26.324109 -98.385516	26.323377 -98.385663
R St	3	3027	Mission	26.326486 -98.385349	26.324787 -98.384393
Tangerine Ln	3	3541	Mission	26.326538 -98.390578	26.325871 -98.385299
Haven Dr	3	4627	Mission	26.325131 -98.390292	26.325134 -98.390306
Mor Ln	3	3000	Mission	26.325297 -98.390342	26.326455 -98.390120
Mars St	3	2999	Mission	26.326363 -98.389366	26.324654 -98.389638
Grapefruit Ln	3	2998	Mission	26.324454 -98.388025	26.326122 -98.387736
Tangerine Ln	3	2996	Mission	26.324636 -98.389934	26.324448 -98.388028
Poinsettia Ln	3	3003	Mission	26.327208 -98.390474	26.324635 -98.389948
Jacaranda Ln	3	3026	Mission	26.326314 -98.391996	26.326100 -98.390654
R St	3	3364	Mission	26.324805 -98.385354	26.324671 -98.384423
Lemon Ln	3	2922	Mission	26.325727 -98.385203	26.324109 -98.385516