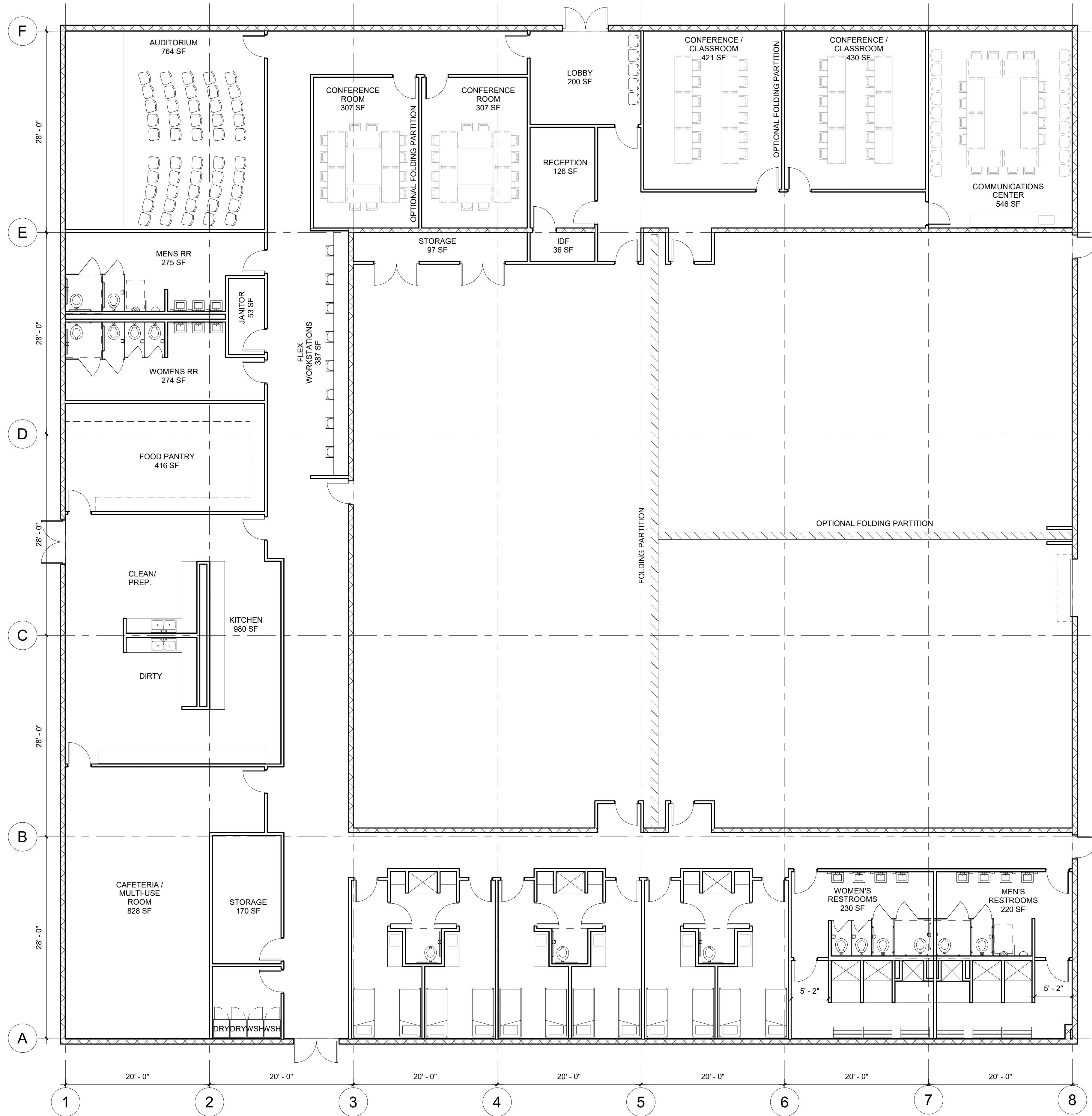




2 PROPOSED SITE PLAN  
1" = 100'-0"



1 PROPOSED FLOOR PLAN  
1/8" = 1'-0"



**Milnet**  
Architectural  
Services, PLLC

608 S. 12th Street P. (956) 688-5656  
McAllen, TX 78501 F. (956) 687-9289  
www.Milnet-ArchServices.com

ISSUED FOR  
INTERIM  
REVIEW ONLY

EMERGENCY MANAGEMENT FACILITY

HIDALGO COUNTY  
7517 N. EXPRESSWAY 281, EDINBURG, TX 78542

PROJECT NUMBER  
222007

DATE  
05/13/22

PROJECT STATUS

SHEET NUMBER

A100