

Hidalgo County

PROFESSIONAL SERVICES  
INSPECTION, MATERIAL TESTING AND CONSTRUCTION MANAGEMENT

REQUEST FOR PAYMENT NO: 9 (May 2022)  
BILLING PERIOD: May 1, 2022 through May 31, 2022

CITY/COUNTY: Hidalgo County  
PROJECT NAME: Hidalgo County Street Inventory  
Work Authorization No. 1  
ENG./ARCH.FIRM: SAMES, Inc. (SAM Engineering and Surveying)  
ADDRESS: 200 S 10th ST. SUITE 1500  
CITY/STATE: McAllen, Texas ZIP: 78501

Contract Amt. \$1,660,128.92

Contract#: C-21-0435-09-21

Purchase Order# 838888

SCOPE OF SERVICES	ESTIMATED AMOUNT	% COMPLETED TO DATE	TOTAL DUE	LESS PREVIOUS PAYMENTS	AMOUNT DUE THIS REQUEST
Phase 1: Preparatory Task 1-7, Preparatory.	\$180,706.00	100.00%	\$180,706.00	\$180,706.00	\$0.00
Task 1-10: Project Management.	\$245,226.00	66.67%	\$163,492.17	\$143,040.33	\$20,451.84
Phase 2: Roadway Inventory Task 1-6, Data Collection..	\$975,984.00	63.69%	\$621,604.21	\$533,082.46	\$88,521.75
Task 1-5, Update Database(s).	\$173,572.00	63.70%	\$110,565.36	\$94,805.03	\$15,760.33
Phase 3: GASB Report Task 1-4, GASB Report.	\$68,204.00	50.00%	\$34,102.00	\$25,576.50	\$8,525.50
Direct Expenses Mileage	\$16,436.92	66.67%	\$10,958.49	\$9,587.66	\$1,370.83
<b>TOTAL</b>	<b>\$1,660,128.92</b>	<b>67.55%</b>	<b>\$1,121,428.23</b>	<b>\$986,797.98</b>	<b>\$134,630.25</b>

Work Authorization Summary

WA No.1	WA Amount	Previously Invoiced	Percentage Complete	Remaining Balance
	\$1,660,128.92	\$986,797.98	67.55%	\$538,700.69

\*Please attach supporting documents to this request  
I certify that the above is true and correct to the best of my knowledge.

INVOICE RECEIVED BY: [Signature] ON 6/3/22  
GOODS/SERVICES RECEIVED BY: [Signature] ON 6-3-22

[Signature]

for Samuel D. Maldonado, P.E., R.P.L.S.  
Principal  
SAMES, Inc.

6/3/22

Date

Please process this invoice/credit memo from this emailed copy as requested by County Auditor. Invoice entered in Tracker

PO # 058888  
Acct # 2-1290-441-62-115-101-534



Engineering Firm Reg # 10602    Surveying Firm Reg # 101416-00    Architectural Firm Reg # BR 4166  
200 S. 10<sup>th</sup> Street, Suite 1500, McAllen, Texas 78501    Phone: (956) 702-8880    Fax: (956) 702-8883  
DUNS 834820735    CAGE CODE 66N60

June 3, 2022

Roy Quintanilha, CPM  
Hidalgo County Executive Office  
505 S. McColl Rd., 2<sup>nd</sup> Floor  
Edinburg, Texas 78539

Re:    Professional Engineering Services- Contract C-21-0435-09-21  
      Work Authorization No. 1 – Roadway & Bridge Inventory Assessment Study and Report(s)

Dear Mr. Quintanilha,

Attached for your review and approval is our request for Payment No. 9 for services rendered under Work Authorization No. 1, executed September 21, 2021. Services rendered are for work completed May 1, 2022, through May 31, 2022, on the above referenced project.

The following is a narrative of the progress for this period:

**TASK DESCRIPTIONS**

<b>Phase 1: Preparatory</b>	<b>100%</b>
-----------------------------	-------------

Preparatory Task 1-10

- Review County provided criteria, previous database, existing basemaps, and any other pertinent project documents.
- Prepare Project Management Plan for services during project duration.
- Prepare/Coordinate & Conduct Project Coordination meetings with Hidalgo County Officials.
- Prepare preliminary list of "new" roadways or developments in the County since previous GASB Report.
- Develop a database containing all assessment parameters.
- Develop a georeferenced mapping system to contain and display all the defects and their severity.
- Evaluate software/systems to provide the condition ratings for each roadway.

**Project Management Task 1-10**

66.67% + 6%

- Prepare and submit Monthly invoicing to County.
- Coordinate Project Segment Kickoff Meetings with each Precinct to establish the Precinct's priorities and identify primary points of contact.
- Coordinate with Hidalgo County Officials to obtain county road historical data (construction date, maintenance, etc.).
- Conduct Internal Meetings with all team members to ensure adherence to scope, schedule, and budget.
- Conduct Monthly meetings with each Precinct to review project progress, scope of work and adherence to schedule.
- Coordinate & attend field visits with Hidalgo County Officials throughout the duration of the project.
- Process RFI's and coordinate with Hidalgo County Officials as needed to request clarifications of street limits, conflicts in name, lack of access, etc.
- Conduct "Hold Points" (new task/scope of work) meetings and "Hands Down" (incident review) meetings as needed.
- Quality Control reviews of data processing.
- QA/QC of Database, PCI, GIS Files, GASB Report.

**Phase 2: Roadway Inventory** 63.69%

+ 9%

Data Collection

- Perform on-site assessment identifying all roadway elements such as Apparent ROW, Pavement Type and Width, Street Length, Sidewalks, and Striping.
- Collect georeferenced photographic evidence of all street signage including Speed Limits, Traffic Signs, Regulatory Signs, Warning Signs, Construction & Maintenance Signs, Service Signs, and Guide Signs.
- Assess the efficacy of Roadway Drainage.
- Provide a Condition Rating of all defects identified within County Roads.
- Daily quality control of field activities to ensure proper categorization.
- Capture and compile photographic evidence roadway conditions.

Update Database(s)

63.70% + 10%

- Populate and maintain the database containing all assessment parameters and Condition Rating Score.
- Provide an estimate for roadway improvements required and capitalize all existing roadways.
- Develop proposed improvement schedule/categories.
- Populate and maintain the georeferenced mapping system to contain and display all the defects and their severity.
- Develop and maintain a PCI based on field parameters.



Engineering Firm Reg # 10602    Surveying Firm Reg # 101416-00    Architectural Firm Reg # BR 4166  
200 S. 10<sup>th</sup> Street, Suite 1500, McAllen, Texas 78501    Phone: (956) 702-8880    Fax: (956) 702-8883  
DUNS 834820735    CAGE CODE 66N60

**Phase 3: GASB Report**

**50.00%**

+ 13<sup>2</sup>/<sub>6</sub>

**GASB Report**

- Prepare and present exhibits to county officials to include Database Reports, GIS Files, Management Plan, etc.
- Calculate historical value, prepare existing value and replacement, repair, and maintenance costs of county roads based on information collected.
- Identify optimal replacement and repair costs.
- Prepare final GASB-34 report to present to Hidalgo County Officials.

**Direct Expenses**

**66.67%**

+ 3<sup>9</sup>/<sub>6</sub>

For your review and consideration attached is our Request for Payment No. 9.

Should you have any questions regarding this submittal please do not hesitate to call me at 956-702-8880.

Respectfully,

For Samuel D. Maldonado, P.E., R.P.L.S  
Principal  
SAMES, Inc.



---

Engineering Firm Reg # 10602    Surveying Firm Reg # 101416-00    Architectural Firm Reg # BR 4166  
200 S. 10<sup>th</sup> Street, Suite 1500, McAllen, Texas 78501    Phone: (956) 702-8880    Fax: (956) 702-8883  
DUNS 834820735    CAGE CODE 66N60

# Memo

**To:** Roy Quintanilha, CPM  
**From:** Samuel D. Maldonado, P.E., R.P.L.S. *RL*  
*(E.O.E.)*  
**Date:** June 3, 2022  
**Re:** Hidalgo County Street Inventory Invoice #9

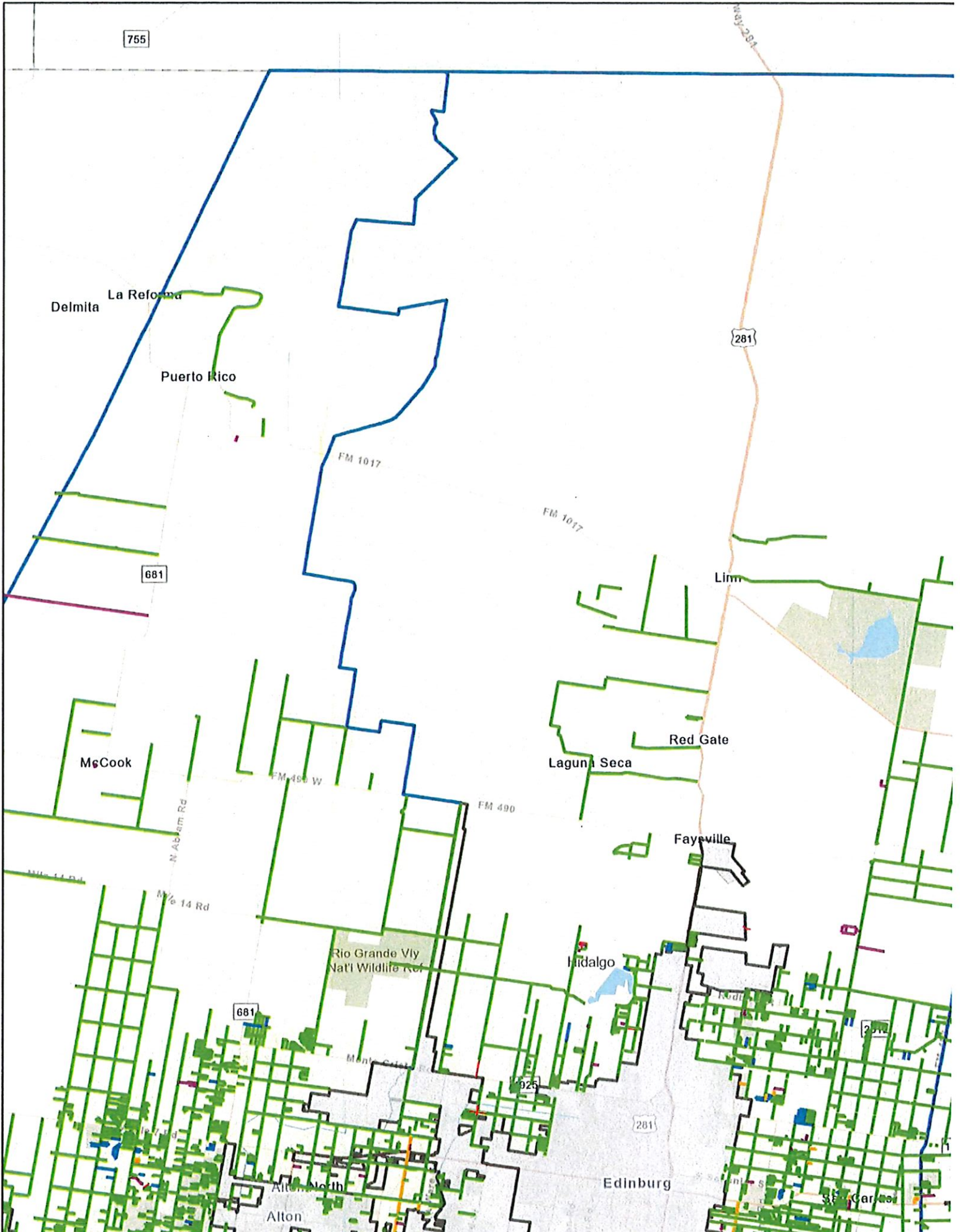
---

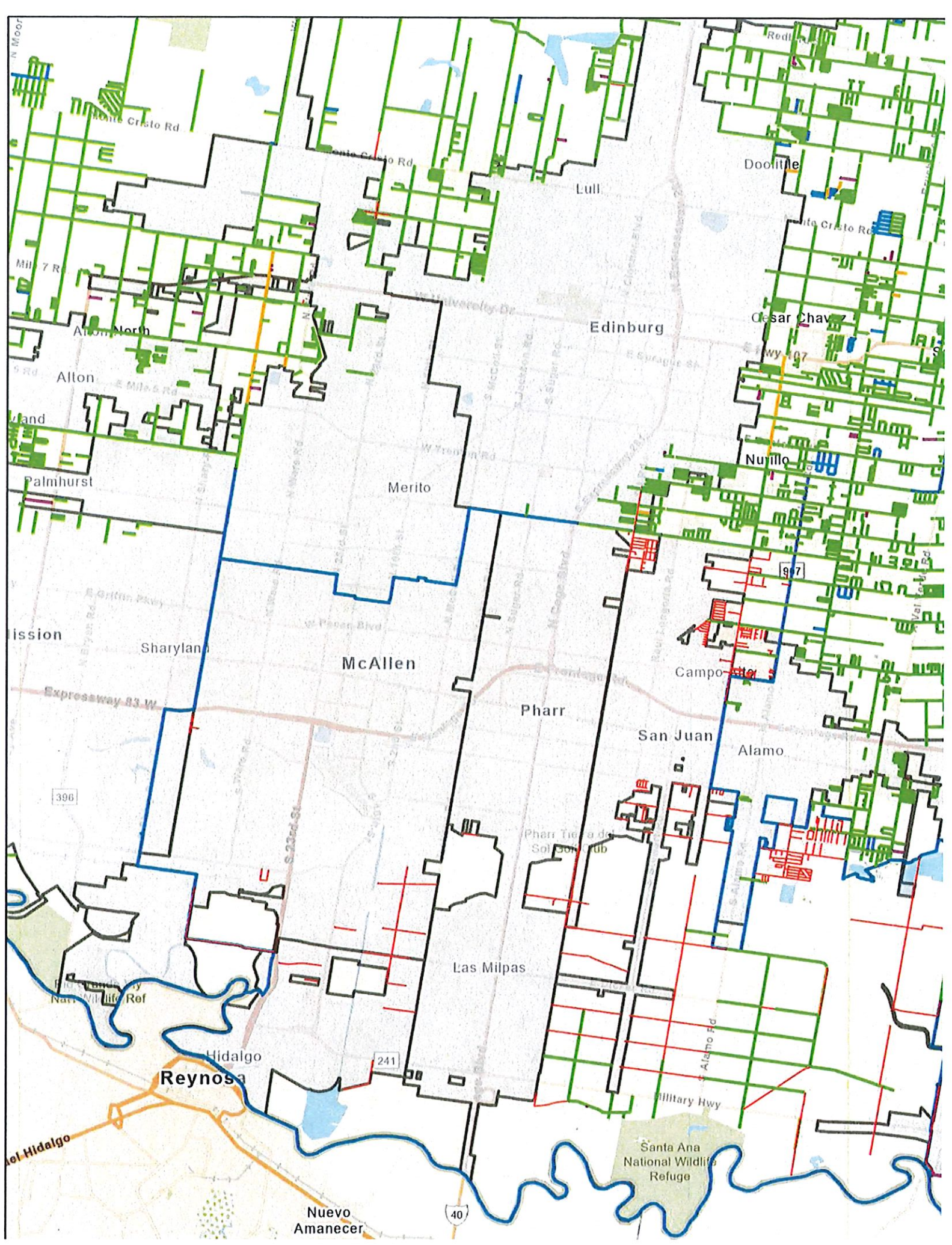
Please see below for the list of items accomplished from May 1, 2022, to May 31, 2022, on the Hidalgo County Street Inventory Project. Should you have any questions, please do not hesitate to reach out to me.

1. SAMES, Inc. met with Precinct 4 on May 6, 2022.
2. SAMES, Inc. met with Precinct 2 on May 12, 2022.
3. SAMES, Inc. met with Precinct 3 on May 20, 2022.
4. SAMES, Inc. met with Precinct 1 on May 25, 2022.
5. SAMES, Inc. obtained the shapefiles of City ETJ's in Hidalgo County.
6. Total mileage inspected within Hidalgo County: 1592 miles/ 67.55% miles (See Exhibit A).
7. Performed on-site inspection identifying all road elements on inspected county roads on Precinct 4 (See Exhibit A).
8. Performed on-site inspection of New Subdivisions with expiring warranties:
  - I. Ocanas Subdivision, no defects identified.
9. Collected georeferenced photographic evidence of street signage on inspected county roads on Precincts 2 and 4. (See Exhibit A).
10. Collected the roadway drainage elements on inspected county roads on Precincts 2 and 4 (See Exhibit A).

11. Performed a condition rating of road defects on inspected county roads on Precincts 2 and 4 (See Exhibit A).
12. Captured and compiled photographic evidence of roadway conditions on inspected county roads on Precinct 4 (See Exhibit A).
13. Populated and maintained the database (See Exhibit B).

# EXHIBIT A





755

281

Delmita La Reforma

Puerto Rico

FM 1017

FM 1017

681

Linn

McCook

Laguna Seca

Red Gate

FM 490 W

FM 490

Fayeville

Rio Grande Vly Nat'l Wildlife Ref

Hidalgo

681

2812

Monte Vista

19

281

W Mile 7 Rd

Alton North

Alton

Edinburg

San Carlos

way 281

N Abram Rd

M/le 14 Rd

Mile 14 Rd

Senior St  
P.O. Box

7

755

FM 281

Delmita La Reforma

Puerto Rico

281

FM 1017

FM 1017

681

Linn



Red Gate

McCook

Laguna Seca

FM 490 W

FM 490

Fayetteville

Mile 14 Rd

Mile 14 Rd

Rio Grande Vly Nat'l Wildlife Ref

Hidalgo

681

2812

Monte Cristo Rd

W Mile 7 Rd

Alton North

Alton

Edinburg

Senior St

San Carlos



755

281

Delmita La Reforma

Puerto Rico

281

FM 1017

FM 1017

Linn

681

Red Gate

McCook

Laguna Seca

FM 490 W

FM 400

Fayetteville

Mile 14 Rd

Mile 14 Rd

N. Abram Rd

Rio Grande Vly Nat'l Wildlife Ref

Hidalgo

681

Monte Vista

281

W Mile 7 Rd

281

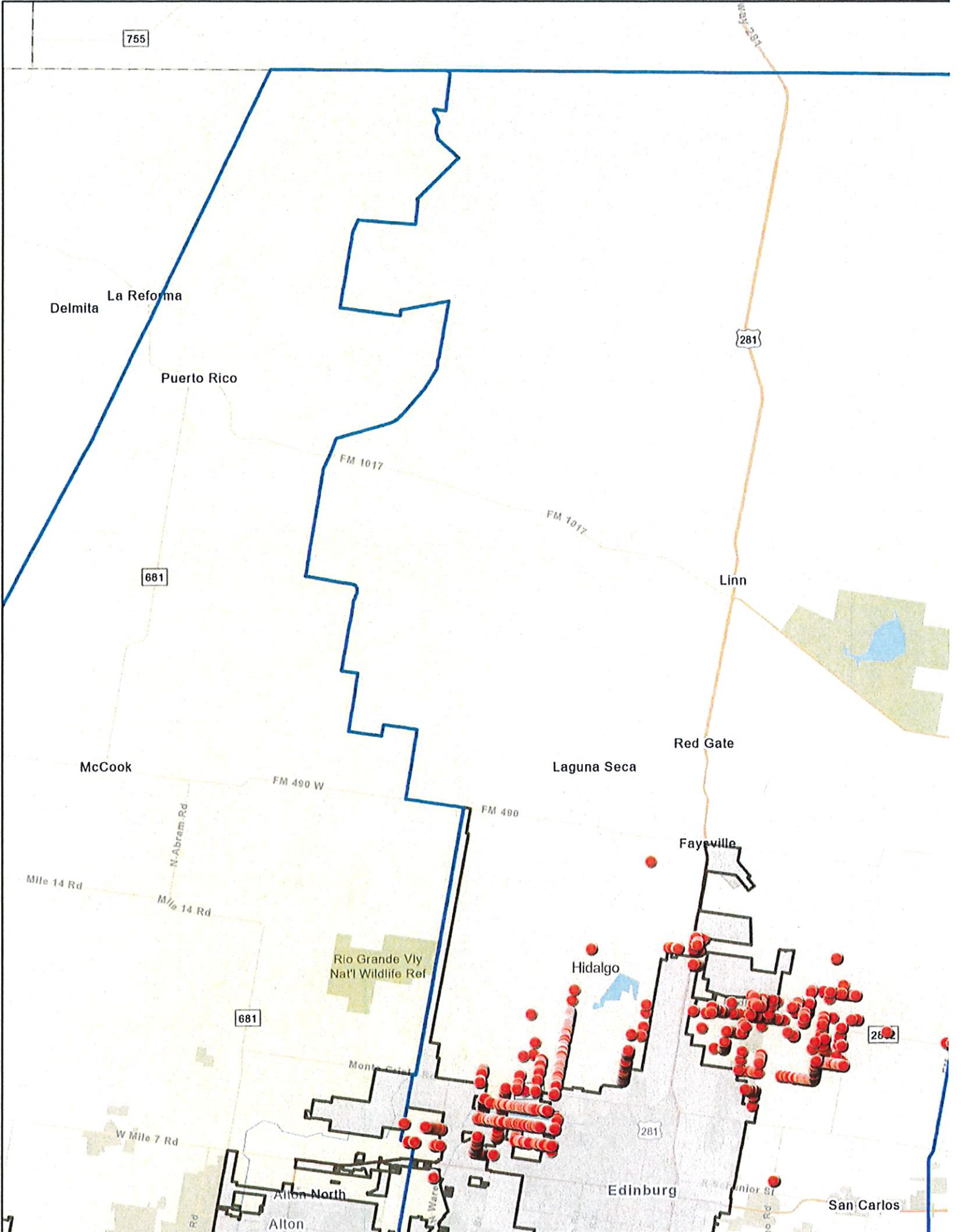
Allton North

Edinburg

Allton

San Carlos

7



755

281

Delmita La Reforma

Puerto Rico

FM 1017

FM 1017

281

Linn

681

Red Gate

McCook

Laguna Seca

FM 490 W

FM 490

Fayetteville

Mile 14 Rd

N Abram Rd  
M/14 Rd

Rio Grande Vly  
Nat'l Wildlife Ref

Jalgo

681

281

Monte Calvo Rd

W Mile 7 Rd

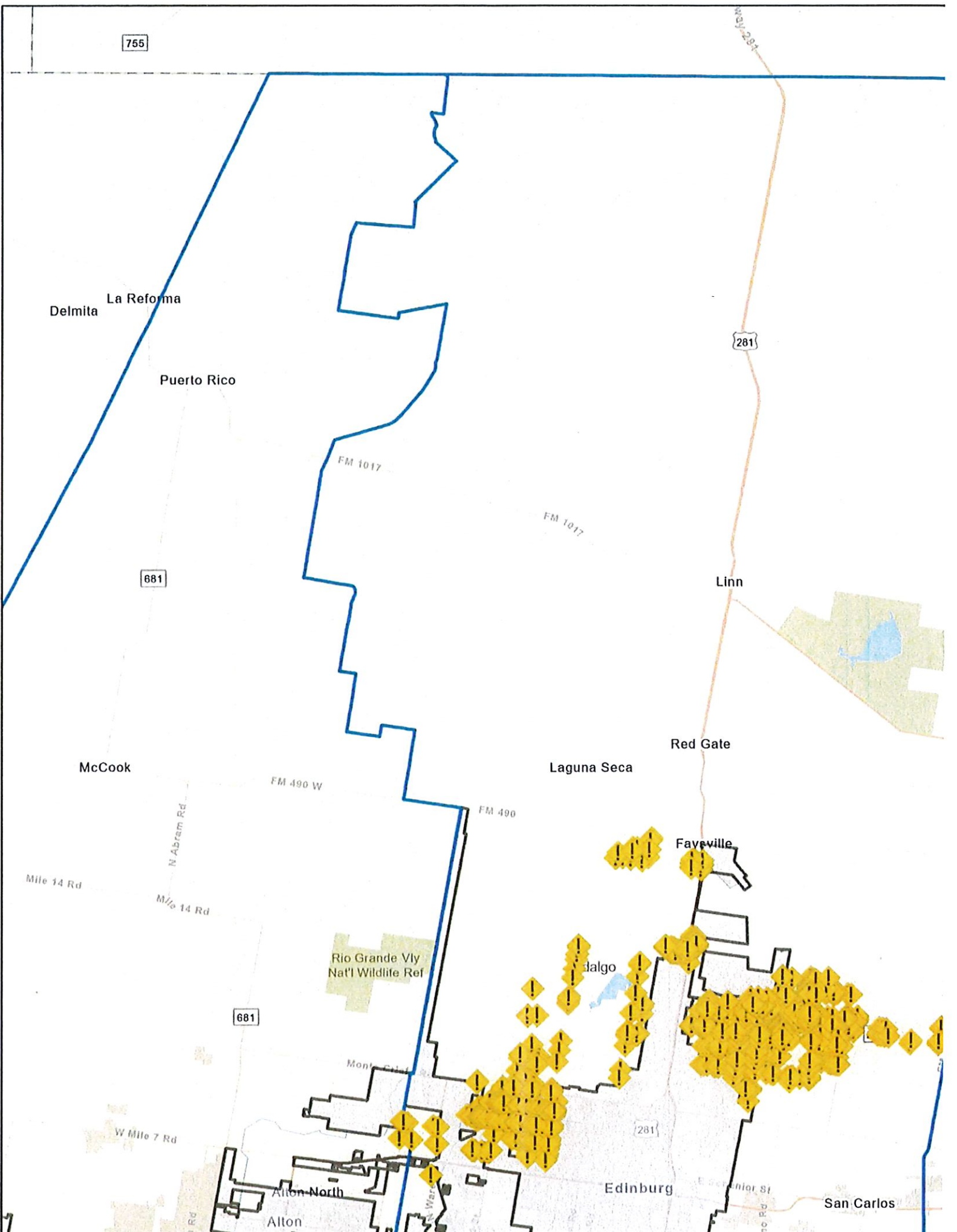
Alton North

Alton

Edinburg

E. Superior St  
Rte 281

San Carlos



755

Delmita La Reforma

Puerto Rico

281

FM 1017

FM 1017

681

Linn

McCook

FM 490 W

Laguna Seca

Red Gate

FM 490

Fayeville

Mile 14 Rd

Mile 14 Rd

Rio Grande Vly Nat'l Wildlife Ref

Hidalgo

681



2812

Mont...

1926

281

W Mile 7 Rd

Alton North

Alton

Edinburg

San Carlos

755

281

Delmita La Reforma

Puerto Rico

281

FM 1017

FM 1017

681

Linn

McCook

FM 490 W

Laguna Seca

Red Gate

FM 490

Fayeville

Mile 14 Rd

Mile 14 Rd

Rio Grande Vly Nat'l Wildlife Ref

Hidalgo

681

Monte Cristo

Redh

W Mile 7 Rd

Alton North

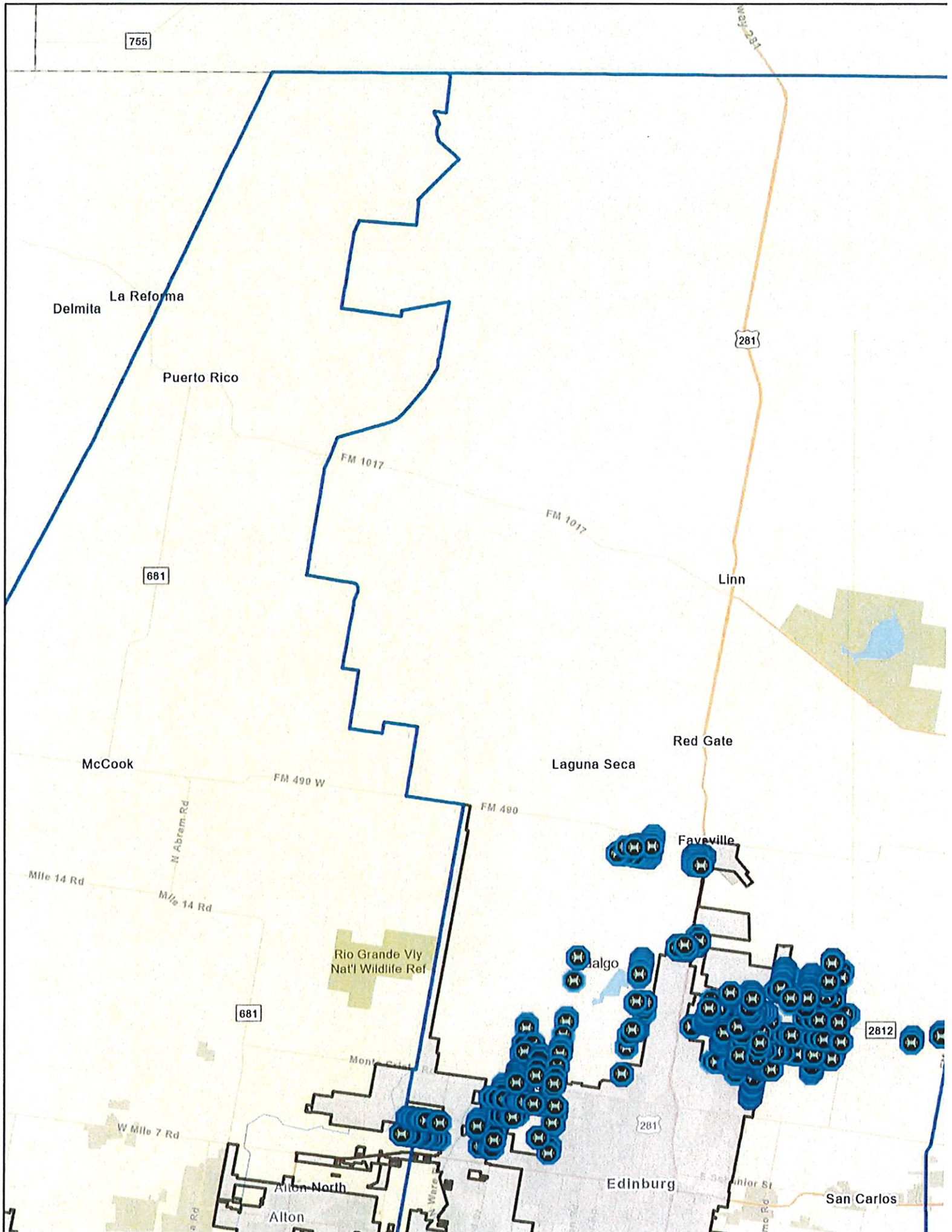
Alton

Edinburg

Edinburg

Senior St

San Carlos



# EXHIBIT B

## Exhibit B - List of Roads Inspected - May 2022

Street Name	Pct	Road ID	City	Starting Point	End Point
Terry Rd	4	1748	Edinburg	<u>26.349345 -98.087560</u>	<u>26.347580 -98.087850</u>
Davis Rd	4	2382	Edinburg	<u>26.349351 -98.087556</u>	<u>26.350437 -98.095539</u>
Davis Rd	4	1736	Edinburg	<u>26.353780 -98.119385</u>	<u>26.352951 -98.113407</u>
Davis Rd	4	2293	Edinburg	<u>26.355994 -98.135322</u>	<u>26.353778 -98.119432</u>
Davis Rd	4	1735	Edinburg	<u>26.352938 -98.113327</u>	<u>26.350440 -98.095521</u>
N Doolittle Rd	4	2343	Edinburg	<u>26.353734 -98.119433</u>	<u>26.346768 -98.120636</u>
Kenyon Rd	4	1940	Edinburg	<u>26.338554 -98.113865</u>	<u>26.350994 -98.111719</u>
Mile 19 N	4	1939	Edinburg	<u>26.344771 -98.112836</u>	<u>26.345318 -98.116784</u>
Cate St	4	4984	Edinburg	<u>26.367647 -98.053347</u>	<u>26.371230 -98.052684</u>
Walter St	4	4983	Edinburg	<u>26.367884 -98.054873</u>	<u>26.370907 -98.054329</u>
Beau St	4	4982	Edinburg	<u>26.371156 -98.055950</u>	<u>26.368096 -98.056439</u>
Jett St	4	4981	Edinburg	<u>26.368308 -98.057934</u>	<u>26.371372 -98.057392</u>
Terry Rd	4	1748	Edinburg	<u>26.347584 -98.087855</u>	<u>26.349337 -98.087560</u>
N Terry Rd	4	2389	Edinburg	<u>26.353263 -98.086822</u>	<u>26.349351 -98.087441</u>
N Terry Rd	4	2389	Edinburg	<u>26.353317 -98.086800</u>	<u>26.357192 -98.086181</u>
Jackpot Dr	3	4862	Edinburg	<u>26.374057 -98.067699</u>	<u>26.373272 -98.067820</u>
Jackpot Blvd	4	No ID	Edinburg	<u>26.373277 -98.067820</u>	<u>26.369862 -98.068436</u>
CR 3124	4	2380	Edinburg	<u>26.364559 -98.031760</u>	<u>26.371703 -98.030352</u>
Cardinal Bay St	4	2299	Edinburg	<u>26.365501 -98.031564</u>	<u>26.364921 -98.027529</u>
Ram Cir	4	2092	Edinburg	<u>26.355776 -98.075821</u>	<u>26.359344 -98.075215</u>
Palladium Ave	4	4950	Edinburg	<u>26.360744 -98.101912</u>	<u>26.361168 -98.104950</u>
Skinner Rd	4	2563	Edinburg	<u>26.366211 -98.043606</u>	<u>26.362812 -98.044217</u>
Alta Ave	4	4951	Edinburg	<u>26.361461 -98.101830</u>	<u>26.361993 -98.105332</u>
Corina Dr	4	2090	Edinburg	<u>26.356685 -98.082264</u>	<u>26.360079 -98.081672</u>
Green Bay Dr	4	2300	Edinburg	<u>26.365359 -98.030367</u>	<u>26.367622 -98.029962</u>
Clemente Ave	4	4956	Edinburg	<u>26.362299 -98.102233</u>	<u>26.362636 -98.104801</u>
Energy Ave	4	4949	Edinburg	<u>26.360462 -98.105350</u>	<u>26.359999 -98.102046</u>
Hidalgo St	4	4859	Edinburg	<u>26.374587 -98.071187</u>	<u>26.373947 -98.066765</u>
Zapata St	4	4860	Edinburg	<u>26.375130 -98.066545</u>	<u>26.375777 -98.070981</u>
Cotulla Ave	4	4954	Edinburg	<u>26.363436 -98.104643</u>	<u>26.363036 -98.102071</u>
Eagle Pass St	4	4861	Edinburg	<u>26.376974 -98.070766</u>	<u>26.376323 -98.066315</u>
Toucan Dr	4	No ID	Edinburg	<u>26.370189 -98.070674</u>	<u>26.373619 -98.070062</u>
Vista Bonita Rd	4	2076	Edinburg	<u>26.375336 -98.071099</u>	<u>26.376225 -98.079343</u>
Karina Street	4	4953	Edinburg	<u>26.363052 -98.102087</u>	<u>26.361610 -98.102322</u>
Spirit Avenue	4	4952	Edinburg	<u>26.361694 -98.103584</u>	<u>26.360326 -98.103811</u>
Kassandra Street	4	4955	Edinburg	<u>26.361871 -98.105011</u>	<u>26.363860 -98.104654</u>
Alamo Rd	4	2618	Edinburg	<u>26.362078 -98.089931</u>	<u>26.365436 -98.089375</u>
Alamo Rd	4	2520	Edinburg	<u>26.365436, -98.089375</u>	<u>26.365720 -98.089323</u>
Ramseyer Rd	4	1744	Edinburg	<u>26.363904 -98.133943</u>	<u>26.363578 -98.131733</u>
Ramseyer Rd	4	1743	Edinburg	<u>26.363556 -98.131577</u>	<u>26.359451 -98.102155</u>
Ramseyer Rd	4	2386	Edinburg	<u>26.359434 -98.102103</u>	<u>26.357781 -98.090241</u>
Ramseyer Rd	4	1742	Edinburg	<u>26.357785 -98.090235</u>	<u>26.355612 -98.074635</u>
San Francisco Dr	4	2061	Edinburg	<u>26.372632 -98.138569</u>	<u>26.368756 -98.139247</u>
Terry Rd	4	1747	Edinburg	<u>26.376880 -98.082792</u>	<u>26.357303 -98.086145</u>

Tower Rd	4	1750	Edinburg	<u>26.371853 -98.075507</u>	<u>26.367933 -98.076178</u>
Tower Rd	4	1749	Edinburg	<u>26.367942 -98.076189</u>	<u>26.356130 -98.078188</u>
Benito A Ramirez	4	1814	Edinburg	<u>26.372651 -98.138577</u>	<u>26.372128 -98.134997</u>
CR 3048	4	2619	Edinburg	<u>26.362564 -98.088042</u>	<u>26.363061 -98.087949</u>
Cr 3048	4	2067	Edinburg	<u>26.363079 -98.087951</u>	<u>26.363464 -98.087902</u>
CR 3082	4	2521	Edinburg	<u>26.363576 -98.087860</u>	<u>26.365468 -98.087534</u>
Legacy Lane	4	4901	Edinburg	<u>26.365336 -98.099243</u>	<u>26.365175 -98.098378</u>
Benito A Ramirez	4	1815	Edinburg	<u>26.372119 -98.134835</u>	<u>26.363505 -98.073226</u>
Haddonfield Dr	4	1937	Edinburg	<u>26.369238 -98.127848</u>	<u>26.367190 -98.128022</u>
Calle de Rebecca	4	2073	Edinburg	<u>26.364805 -98.082968</u>	<u>26.361450 -98.082232</u>
Calle de America	4	2074	Edinburg	<u>26.361419 -98.082232</u>	<u>26.364605 -98.081677</u>
Bella Drive	4	5146	Edinburg	<u>26.366699 -98.096646</u>	<u>26.363256 -98.097292</u>
Citrus Street	4	4900	Edinburg	<u>26.366885 -98.098037</u>	<u>26.363272 -98.098688</u>
Jasmin Rd	4	2471	Edinburg	<u>26.371764 -98.132632</u>	<u>26.368341 -98.133043</u>
Haddonfield Dr	4	1936	Edinburg	<u>26.371025 -98.127512</u>	<u>26.369086 -98.127868</u>
Flamingo Ave	4	4692	Edinburg	<u>26.376574 -98.109013</u>	<u>26.372641 -98.109699</u>
Irma St	4	5130	Edinburg	<u>26.376232 -98.106683</u>	<u>26.373029 -98.107301</u>
Anna St	4	5131	Edinburg	<u>26.375910 -98.104388</u>	<u>26.372626 -98.104943</u>
Miguel St	4	5132	Edinburg	<u>26.372670 -98.104935</u>	<u>26.372997 -98.107212</u>
Sebastian St	4	5133	Edinburg	<u>26.373664 -98.107064</u>	<u>26.373370 -98.104850</u>
Diego St	4	5134	Edinburg	<u>26.374101 -98.104761</u>	<u>26.374423 -98.106954</u>
Panfilo St	4	5135	Edinburg	<u>26.375094 -98.106837</u>	<u>26.374763 -98.104602</u>
Vasco St	4	5136	Edinburg	<u>26.375500 -98.104505</u>	<u>26.375819 -98.106714</u>
Cameron Rd	4	2062	Edinburg	<u>26.356614 -98.110794</u>	<u>26.356700 -98.111483</u>
Ingle Rd	4	1741	Edinburg	<u>26.379532 -98.140059</u>	<u>26.378701 -98.133972</u>
Cameron Rd	4	2617	Edinburg	<u>26.356681 -98.111390</u>	<u>26.357224 -98.115122</u>
Ingle Rd	4	1740	Edinburg	<u>26.378659 -98.133381</u>	<u>26.376374 -98.107365</u>
Cameron	4	2513	Edinburg	<u>26.357241 -98.115123</u>	<u>26.357566 -98.117452</u>
Cameron Rd	4	2063	Edinburg	<u>26.357558 -98.117459</u>	<u>26.357740 -98.118707</u>
Ingle Rd	4	2383	Edinburg	<u>26.376358 -98.107360</u>	<u>26.373022 -98.083475</u>
Gwin Rd	4	1818	Edinburg	<u>26.370595 -98.124658</u>	<u>26.362803 -98.126009</u>
Doolittle Rd	4	1816	Edinburg	<u>26.353836 -98.119403</u>	<u>26.357038 -98.118852</u>
Doolittle Rd	4	1817	Edinburg	<u>26.357381 -98.118757</u>	<u>26.385971 -98.113880</u>
Ingle Rd	4	2383	Edinburg	<u>26.373003 -98.083423</u>	<u>26.371916 -98.075676</u>
Ingle Rd	4	1739	Edinburg	<u>26.371920 -98.075673</u>	<u>26.371975 -98.075159</u>
Via Blanca	4	2070	Edinburg	<u>26.367291 -98.085589</u>	<u>26.367401 -98.086399</u>
Via Verde	4	2069	Edinburg	<u>26.368583 -98.085390</u>	<u>26.368666 -98.086158</u>
Via Rojo	4	2071	Edinburg	<u>26.366124 -98.086608</u>	<u>26.366025 -98.085815</u>
Kenyon Rd	4	1942	Edinburg	<u>26.356585 -98.110762</u>	<u>26.360545 -98.110101</u>
Vista del Cielo	4	2068	Edinburg	<u>26.368654 -98.086190</u>	<u>26.365408 -98.086786</u>
Kenyon Rd	4	1941	Edinburg	<u>26.360610 -98.110119</u>	<u>26.368388 -98.108738</u>
Calle De Rebecca	4	2072	Edinburg	<u>26.364882 -98.083071</u>	<u>26.368796 -98.082415</u>
Barbara Ln	4	2075	Edinburg	<u>26.363836 -98.075341</u>	<u>26.367283 -98.074726</u>
Midnight St	4	5159	Edinburg	<u>26.392548 -98.085827</u>	<u>26.392141 -98.083106</u>
Carmen Avila Rd	4	2567	Edinburg	<u>26.388489 -98.08802</u>	<u>26.393920 -98.086996</u>
JJ In	4	5074	Edinburg	<u>26.388824 -98.083718</u>	<u>26.389204 -98.086413</u>
Harwell Ln	4	5075	Edinburg	<u>26.389487 -98.083596</u>	<u>26.389910 -98.086294</u>

Adam St	4	5155	Edinburg	<u>26.390602 -98.086168</u>	<u>26.390184 -98.083468</u>
Visha St	4	5158	Edinburg	<u>26.390854 -98.083352</u>	<u>26.391266 -98.086046</u>
Gypsy St	4	5160	Edinburg	<u>26.392237 -98.083859</u>	<u>26.390993 -98.084088</u>
Zeus St	4	5161	Edinburg	<u>26.391107 -98.084847</u>	<u>26.392344 -98.084612</u>
Daniec St	4	5162	Edinburg	<u>26.392463 -98.085365</u>	<u>26.391206 -98.085596</u>
Barry Dr	4	4748	Edinburg	<u>26.385701 -98.084262</u>	<u>26.386307 -98.088425</u>
Lydia Dr	4	4749	Edinburg	<u>26.386104 -98.086969</u>	<u>26.387539 -98.086572</u>
Mile 22 1/2 N	4	No ID	Edinburg	<u>26.387808 -98.083459</u>	<u>26.388504 -98.088002</u>
Kay Ave	4	5073	Edinburg	<u>26.388297 -98.086606</u>	<u>26.390389 -98.086225</u>
Kay Ave	4	5157	Edinburg	<u>26.390387 -98.086221</u>	<u>26.392526 -98.085829</u>
Marisol Dr	4	5156	Edinburg	<u>26.392125 -98.083102</u>	<u>26.389886 -98.083491</u>
Calle De Los Arbo	4	2065	Edinburg	<u>26.369770 -98.095702</u>	<u>26.366741 -98.096213</u>
Marisol Dr	4	5076	Edinburg	<u>26.389891 -98.083498</u>	<u>26.387901 -98.083850</u>
Marisol Dr	4	No ID	Edinburg	<u>26.387846 -98.083852</u>	<u>26.386794 -98.084036</u>
Calle de Los Aguas	4	2066	Edinburg	<u>26.369891 -98.096575</u>	<u>26.369655 -98.094850</u>
Merak St	4	4354	Edinburg	<u>26.367122 -98.098923</u>	<u>26.370133 -98.098420</u>
Marisol Dr	4	4750	Edinburg	<u>26.386803 -98.084034</u>	<u>26.385268 -98.084313</u>
Adriel Dr	4	4752	Edinburg	<u>26.386360 -98.084139</u>	<u>26.386388 -98.084362</u>
Adriel Dr	4	No ID	Edinburg	<u>26.386393 -98.084348</u>	<u>26.386730 -98.086553</u>
Calle de los Aguas	4	4355	Edinburg	<u>26.370047 -98.097471</u>	<u>26.370307 -98.099288</u>
Adriel Dr	4	4751	Edinburg	<u>26.386732 -98.086571</u>	<u>26.386775 -98.086817</u>
N Doolittle Rd	4	2411	Edinburg	<u>26.386081 -98.113851</u>	<u>26.381760 -98.114596</u>
Alberto Rd	4	1931	Edinburg	<u>26.375441 -98.127818</u>	<u>26.378842 -98.127255</u>
Alberto Rd	4	2472	Edinburg	<u>26.378940 -98.127217</u>	<u>26.379098 -98.127192</u>
Calle Paris	4	2099	Edinburg	<u>26.394647 -98.073765</u>	<u>26.386512 -98.075403</u>
Abby St	4	2620	Edinburg	<u>26.374605 -98.114874</u>	<u>26.373946 -98.114996</u>
Mile 22 1/2 N	4	2096	Edinburg	<u>26.387834 -98.083465</u>	<u>26.385842 -98.069210</u>
Calle Nicky	4	2098	Edinburg	<u>26.386839 -98.076794</u>	<u>26.385286 -98.084315</u>
Cibolo	4	2097	Edinburg	<u>26.382164 -98.081113</u>	<u>26.402078 -98.077547</u>
First St	4	1933	Edinburg	<u>26.373622 -98.117375</u>	<u>26.369778 -98.118055</u>
Bermea Rd	4	1657	Edinburg	<u>26.375340 -98.126883</u>	<u>26.378964 -98.126298</u>
CR 3093	4	2512	Edinburg	<u>26.372756 -98.117507</u>	<u>26.372536 -98.116208</u>
Kyle Ave	4	1938	Edinburg	<u>26.377235 -98.114023</u>	<u>26.373952 -98.114947</u>
Second Street	4	1932	Edinburg	<u>26.373805 -98.118293</u>	<u>26.369915 -98.118955</u>
Carmen Avila Rd	4	2388	Edinburg	<u>26.388461, -98.088044</u>	<u>26.387173 -98.088279</u>
Mountain View	4	2095	Edinburg	<u>26.347940 -98.077443</u>	<u>26.348132 -98.078796</u>
N Jasmine Rd	4	1929	Edinburg	<u>26.383634 -98.130599</u>	<u>26.379683 -98.131262</u>
Carmen Avila Rd	4	1746	Edinburg	<u>26.387177 -98.088269</u>	<u>26.377939 -98.089882</u>
Cabana Street	4	4745	Edinburg	<u>26.378420 -98.107535</u>	<u>26.379853 -98.107298</u>
Cabana Street	4	4742	Edinburg	<u>26.378410 -98.107526</u>	<u>26.376994 -98.107781</u>
Cops de oro Street	4	4743	Edinburg	<u>26.376557 -98.108622</u>	<u>26.378516 -98.108282</u>
Copa de Oro Street	4	4744	Edinburg	<u>26.378517 -98.108277</u>	<u>26.379957 -98.108010</u>
Rancho Alto Dr	4	2079	Edinburg	<u>26.378680 -98.094862</u>	<u>26.383247 -98.094073</u>
Sunrise Ln	4	4834	Edinburg	<u>26.383381 -98.096144</u>	<u>26.385023 -98.095855</u>
Sunrise St	4	2080	Edinburg	<u>26.378973 -98.096899</u>	<u>26.383435 -98.096135</u>
Tasajillo Dr	4	4835	Edinburg	<u>26.385029 -98.095864</u>	<u>26.385382 -98.098159</u>
Tasajillo Drive	4	4895	Edinburg	<u>26.385383 -98.098159</u>	<u>26.386089 -98.102732</u>

Viznaga	4	4894	Edinburg	<u>26.385767 -98.100594</u>	<u>26.389722 -98.099830</u>
Viznaga Dr	4	4958	Edinburg	<u>26.389712 -98.099828</u>	<u>26.395604 -98.098759</u>
Yandel Street	4	4746	Edinburg	<u>26.379967 -98.107995</u>	<u>26.379878 -98.107300</u>
Nopalera Road	4	4959	Edinburg	<u>26.393646 -98.099096</u>	<u>26.393010 -98.094772</u>
Mirasoles Ln	4	1934	Edinburg	<u>26.381349 -98.113820</u>	<u>26.377389 -98.114510</u>
N Jasmine Rd	4	1930	Edinburg	<u>26.371836 -98.132637</u>	<u>26.379968 -98.131236</u>
Fleur Ln	4	4741	Edinburg	<u>26.377028 -98.108507</u>	<u>26.376936 -98.107785</u>
Milo Ponce Dr	4	2089	Edinburg	<u>26.380621 -98.109100</u>	<u>26.376720 -98.109898</u>
Avenida de Palmr	4	4357	Edinburg	<u>26.376168 -98.105664</u>	<u>26.380016 -98.104985</u>
Horizon Trail	4	3986	Edinburg	<u>26.443629 -98.157641</u>	<u>26.444831 -98.170785</u>
Wagon Trail	4	3984	Edinburg	<u>26.453624 -98.155480</u>	<u>26.443722 -98.157509</u>
Spur Trail	4	3987	Edinburg	<u>26.448517 -98.163713</u>	<u>26.442163 -98.164839</u>
Lasso Trail	4	3985	Edinburg	<u>26.444914 -98.171039</u>	<u>26.448396 -98.156445</u>
Brooklyn St	4	4360	Edinburg	<u>26.376791 -98.106704</u>	<u>26.377483 -98.106586</u>
Tiffany St	4	4358	Edinburg	<u>26.376603 -98.105595</u>	<u>26.376779 -98.106694</u>
Lupita St	4	4361	Edinburg	<u>26.378240 -98.106488</u>	<u>26.378042 -98.105002</u>
Xanders St	4	4362	Edinburg	<u>26.378807 -98.105221</u>	<u>26.378967 -98.106306</u>
Yandel St	4	4364	Edinburg	<u>26.379677 -98.106203</u>	<u>26.379528 -98.105106</u>
Molly St	4	4359	Edinburg	<u>26.377474 -98.106587</u>	<u>26.377344 -98.105474</u>
Jacob St	4	4363	Edinburg	<u>26.378907 -98.106330</u>	<u>26.379630 -98.106211</u>
Locker Ave	4	3964	Edinburg	<u>26.378411 -98.093753</u>	<u>26.374589 -98.094407</u>
Hallam Ave	4	3965	Edinburg	<u>26.377894 -98.092912</u>	<u>26.374443 -98.093505</u>
Gemini St	4	3967	Edinburg	<u>26.378145 -98.091930</u>	<u>26.374346 -98.092599</u>
Los Azares St	4	2077	Edinburg	<u>26.374199 -98.091782</u>	<u>26.378056 -98.091118</u>
Ron Ave	4	3966	Edinburg	<u>26.376211 -98.091682</u>	<u>26.376519 -98.094040</u>
Ron Ave	4	2078	Edinburg	<u>26.376210 -98.091704</u>	<u>26.376104 -98.091062</u>
San Juan Rd	2	70	Hidalgo	<u>26.087775 -98.176178</u>	<u>26.090597 -98.176145</u>
Cesar Chavez Rd	2	149	Alamo	<u>26.081995 -98.152729</u>	<u>26.087632 -98.151827</u>
Cesar Chavez Rd	2	150	Alamo	<u>26.087779 -98.151759</u>	<u>26.098511 -98.149944</u>
Doffin Rd	2	91	Alamo	<u>26.088565 -98.158265</u>	<u>26.083702 -98.160666</u>
Avila Rd	2	105	Alamo	<u>26.083687 -98.160676</u>	<u>26.083392 -98.160703</u>
Avila Rd	2	104	Alamo	<u>26.083696 -98.160680</u>	<u>26.082057 -98.160916</u>
Doffin Rd	2	297	Alamo	<u>26.083691 -98.160590</u>	<u>26.083707 -98.161478</u>
Doffin Rd	2	92	Alamo	<u>26.086869 -98.174671</u>	<u>26.083692 -98.161461</u>
S Stewart	2	77	Alamo	<u>26.082224 -98.164925</u>	<u>26.089304 -98.163712</u>
S Tower Rd	2	130	Alamo	<u>26.109660 -98.123618</u>	<u>26.084404 -98.127939</u>
S Tower Rd	2	129	Alamo	<u>26.109631 -98.123619</u>	<u>26.127465 -98.120586</u>
Juan Balli Rd	2	270	Alamo	<u>26.127579 -98.121240</u>	<u>26.124240 -98.104652</u>
Border Rd	2	163	Alamo	<u>26.124256 -98.104644</u>	<u>26.110849 -98.106672</u>
Border Rd	2	164	Alamo	<u>26.110854 -98.106678</u>	<u>26.096551 -98.109174</u>
Anaya Rd	2	241	Alamo	<u>26.100403 -98.137340</u>	<u>26.096531 -98.109199</u>
Plantation Rd	4	99	Alamo	<u>26.085648 -98.170986</u>	<u>26.085128, -98.171234</u>
High Line Rd	2	295	Alamo	<u>26.099432 -98.183339</u>	<u>26.096569 -98.162640</u>
San Juan Rd	4	71	Alamo	<u>26.091510 -98.175969</u>	<u>26.110526 -98.172290</u>
San Juan Rd	4	72	Alamo	<u>26.110500 -98.172288</u>	<u>26.112537 -98.171963</u>
High Line Rd	2	273	Alamo	<u>26.089308 -98.110607</u>	<u>26.090474 -98.118706</u>
High Line Rd	4	272	Alamo	<u>26.093230 -98.138692</u>	<u>26.090482 -98.118766</u>

Border Rd	2	1497	Alamo	<u>26.073439 -98.113191</u>	<u>26.081993 -98.111804</u>
Juan Balli Rd	2	269	Alamo	<u>26.129125 -98.132452</u>	<u>26.127585 -98.121248</u>
Chukar St	4	4011	Edinburg	<u>26.379939 -98.103674</u>	<u>26.383517 -98.103793</u>
Chukar Ln	4	4446	Edinburg	<u>26.383524 -98.103779</u>	<u>26.383648 -98.104720</u>
Kenyon Rd	4	4450	Edinburg	<u>26.380363 -98.106682</u>	<u>26.381420 -98.106480</u>
Kenyon rd	4	4451	Edinburg	<u>26.381458 -98.106468</u>	<u>26.384291 -98.105969</u>
Rhythm Dr	4	4452	Edinburg	<u>26.384302 -98.105941</u>	<u>26.384235 -98.105337</u>
Rhythm Dr	4	4448	Edinburg	<u>26.384225 -98.105343</u>	<u>26.384138 -98.104694</u>
Muse Dr	4	4191	Edinburg	<u>26.377501 -98.087124</u>	<u>26.373641 -98.087791</u>
Eleanor St	4	4192	Edinburg	<u>26.376977 -98.087255</u>	<u>26.377146 -98.088624</u>
Mae St	4	4194	Edinburg	<u>26.376392 -98.088813</u>	<u>26.376163 -98.087394</u>
Dorothy St	4	4193	Edinburg	<u>26.377136 -98.088629</u>	<u>26.376373 -98.088813</u>
Colton St	4	4195	Edinburg	<u>26.375345 -98.087534</u>	<u>26.375544 -98.088984</u>
Pat St	4	4196	Edinburg	<u>26.375515 -98.089013</u>	<u>26.374764 -98.089186</u>
Mabel St	4	4197	Edinburg	<u>26.374776 -98.089180</u>	<u>26.374530 -98.087679</u>
Presley Dr	4	4447	Edinburg	<u>26.384111 -98.104691</u>	<u>26.380868 -98.105249</u>
Heartbreak Dr	4	4449	Edinburg	<u>26.380857 -98.105258</u>	<u>26.380987 -98.106513</u>
Harrah Dr	4	2087	Edinburg	<u>26.384314 -98.106947</u>	<u>26.380482 -98.107608</u>
Harrah Drive	4	4747	Edinburg	<u>26.379960 -98.107698</u>	<u>26.380439 -98.107618</u>
Alcatras St	4	2086	Edinburg	<u>26.381553 -98.108932</u>	<u>26.381705 -98.109974</u>
Chetumal Ave	4	2082	Edinburg	<u>26.384919 -98.109895</u>	<u>26.384694 -98.108372</u>
Tepoztlan St	4	2085	Edinburg	<u>26.382334 -98.108802</u>	<u>26.382498 -98.109838</u>
Sullivan Ave	4	2084	Edinburg	<u>26.383136 -98.108663</u>	<u>26.383280 -98.109701</u>
Tulipan Ave	4	2083	Edinburg	<u>26.383904 -98.108509</u>	<u>26.384060 -98.109560</u>
Quietud St	4	2081	Edinburg	<u>26.380830 -98.110143</u>	<u>26.384831 -98.109463</u>
Kenyon Rd	4	2473	Edinburg	<u>26.369579 -98.108498</u>	<u>26.368487 -98.108700</u>
Alamo Rd	4	2384	Edinburg	<u>26.347427 -98.096015</u>	<u>26.350415 -98.095545</u>
Encinitos Rd	4	2353	Edinburg	<u>26.398844 -98.133934</u>	<u>26.399605 -98.139545</u>
Second St	4	2511	Edinburg	<u>26.409585 -98.136064</u>	<u>26.408848 -98.136311</u>
Meadow Ln	4	3821	Edinburg	<u>26.385675 -98.112670</u>	<u>26.382020 -98.113390</u>
Hillcrest Ln	4	3820	Edinburg	<u>26.382359 -98.113217</u>	<u>26.381093 -98.111873</u>
Gwin Rd	4	2088	Edinburg	<u>26.382544 -98.122604</u>	<u>26.385332 -98.122135</u>
1st St	4	2470	Edinburg	<u>26.404227 -98.137924</u>	<u>26.405640 -98.137729</u>
N Rooth Rd	4	1959	McAllen	<u>26.318722 -98.232781</u>	<u>26.344834 -98.228266</u>
Ramseyer Dr	4	4434	Edinburg	<u>26.361114, -98.113669</u>	<u>26.360938, -98.112357</u>
Schunior Rd	4	1960	Edinburg	<u>26.317513 -98.224859</u>	<u>26.318783 -98.233421</u>
N Depot Rd	4	1958	Edinburg	<u>26.324669 -98.223550</u>	<u>26.346270 -98.219749</u>
Roosevelt Ave	4	1924	Edinburg	<u>26.406395 -98.135773</u>	<u>26.406482 -98.136429</u>
Roosevelt Ave	4	1925	Edinburg	<u>26.406481 -98.136411</u>	<u>26.406838 -98.138977</u>
Cleveland Ave	4	2058	Edinburg	<u>26.407394 -98.135541</u>	<u>26.407642 -98.137358</u>
10th St	4	1964	Edinburg	<u>26.333214 -98.205828</u>	<u>26.340389 -98.204552</u>
Hoehn Dr	4	1955	Edinburg	<u>26.323559 -98.215591</u>	<u>26.345086 -98.211808</u>
10th St	4	2477	Edinburg	<u>26.315332 -98.209183</u>	<u>26.319323 -98.208325</u>
10th St	4	2478	Edinburg	<u>26.319319 -98.208324</u>	<u>26.329598 -98.206493</u>
Mon Mack	4	1983	Edinburg	<u>26.315265 -98.200735</u>	<u>26.315403 -98.200721</u>
Mon Mack	4	1982	Edinburg	<u>26.314110 -98.200940</u>	<u>26.315290 -98.200745</u>
Mon Mack	4	1985	Edinburg	<u>26.318017 -98.200253</u>	<u>26.321262 -98.199695</u>

Mon Mack	4	1984	Edinburg	<u>26.315590 -98.200685</u>	<u>26.318016 -98.200258</u>
Mon Mack	4	1986	Edinburg	<u>26.321313 -98.199678</u>	<u>26.339244 -98.196506</u>
W Russell Rd	4	1968	Edinburg	<u>26.329095 -98.202862</u>	<u>26.328465 -98.198442</u>
W Chapin St	4	1957	Edinburg	<u>26.321250 -98.199707</u>	<u>26.323532 -98.215568</u>
Rodgers Rd	4	2475	Edinburg	<u>26.337913 -98.213030</u>	<u>26.335658 -98.197175</u>
W Russell Rd	4	1969	Edinburg	<u>26.330751 -98.214362</u>	<u>26.331904 -98.222263</u>
Rodgers Rd	4	1956	Edinburg	<u>26.337947 -98.213091</u>	<u>26.339839 -98.226269</u>
Mile 17 1/2 Rd	4	2480	Edinburg	<u>26.331888 -98.222322</u>	<u>26.333065 -98.230237</u>
Mile 17 1/2 Rd	4	2597	Edinburg	<u>26.333056 -98.230269</u>	<u>26.333967 -98.236252</u>
Mile 17 1/2 Rd	4	2479	Edinburg	<u>26.329136 -98.203005</u>	<u>26.330744 -98.214314</u>
Hoehn Rd	4	2424	Edinburg	<u>26.378731 -98.208713</u>	<u>26.375298 -98.209351</u>
Hoehn Rd	4	2423	Edinburg	<u>26.373489 -98.209697</u>	<u>26.368882 -98.210574</u>
Hoehn Rd	4	1832	Edinburg	<u>26.368891 -98.210582</u>	<u>26.364174 -98.211443</u>
Hoehn Rd	4	2422	Edinburg	<u>26.364250 -98.211426</u>	<u>26.359989 -98.212216</u>
Citrus Dr	4	2606	Edinburg	<u>26.381796 -98.204179</u>	<u>26.379089 -98.204692</u>
Citrus Dr	4	2606	Edinburg	<u>26.379139 -98.204693</u>	<u>26.378029 -98.204775</u>
Citrus Dr	4	2497	Edinburg	<u>26.378040 -98.204773</u>	<u>26.367383 -98.206705</u>
Citrus Dr.	4	2044	Edinburg	<u>26.367417 -98.206696</u>	<u>26.359351 -98.208241</u>
Citrus Dr	4	3823	Edinburg	<u>26.359356 -98.208241</u>	<u>26.348657 -98.210174</u>
Hoehn Rd	4	1831	Edinburg	<u>26.345684 -98.214877</u>	<u>26.359938 -98.212219</u>
Hoehn Rd	4	2424	Edinburg	<u>26.378765 -98.208706</u>	<u>26.388624 -98.206958</u>
Mile 11 Rd	4	3822	Edinburg	<u>26.359311 -98.208264</u>	<u>26.359939 -98.212190</u>
Eubank Rd	4	1870	Edinburg	<u>26.360513 -98.203934</u>	<u>26.344484 -98.206905</u>
CR 4057	4	2503	Edinburg	<u>26.380500 -98.163539</u>	<u>26.380172 -98.161486</u>
CR 4057	4	2504	Edinburg	<u>26.380182 -98.161481</u>	<u>26.380089 -98.160818</u>
Bars Mars	4	1916	Edinburg	<u>26.382150 -98.159075</u>	<u>26.368991 -98.161058</u>
Seminary Rd	4	1883	Edinburg	<u>26.399772 -98.160485</u>	<u>26.382664 -98.162362</u>
Seminary Rd	4	2345	Edinburg	<u>26.382649 -98.162372</u>	<u>26.379869 -98.163917</u>
Baylie Bear Dr	4	No ID	Edinburg	<u>26.402812 -98.147818</u>	<u>26.406469 -98.147140</u>
Sugar Bear Dr	4	No ID	Edinburg	<u>26.406324 -98.146137</u>	<u>26.402659 -98.146782</u>
Becky Ln	4	No ID	Edinburg	<u>26.405498 -98.145666</u>	<u>26.405559 -98.146203</u>
Sunny Ln	4	No ID	Edinburg	<u>26.404379 -98.147425</u>	<u>26.404137 -98.145906</u>
Adams Ave	4	1927	Edinburg	<u>26.409943 -98.138424</u>	<u>26.409552 -98.135523</u>
Jefferson Ave	4	1926	Edinburg	<u>26.408713 -98.135846</u>	<u>26.409112 -98.138574</u>
Washington Ave	4	2469	Edinburg	<u>26.410913 -98.138225</u>	<u>26.410295 -98.133970</u>
Second	4	2057	Edinburg	<u>26.406479 -98.136168</u>	<u>26.407982 -98.135906</u>
Lincoln Ave	4	2355	Edinburg	<u>26.407948 -98.135931</u>	<u>26.408329 -98.138719</u>
1st St	4	1928	Edinburg	<u>26.410689 -98.136847</u>	<u>26.405701 -98.137724</u>
Wilson Ave	4	1923	Edinburg	<u>26.405426 -98.135981</u>	<u>26.405844 -98.139057</u>
Sunny Ln	4	3833	Edinburg	<u>26.404155 -98.145915</u>	<u>26.403499 -98.141214</u>
Becky Ln	4	3832	Edinburg	<u>26.405500 -98.145674</u>	<u>26.404814 -98.140983</u>
Seminary Rd	4	2345	Edinburg	<u>26.379836 -98.163925</u>	<u>26.348932 -98.169437</u>
Big 5 Rd	4	2425	Edinburg	<u>26.414106 -98.185698</u>	<u>26.400504 -98.188199</u>
Big 5 Rd	4	2425	Edinburg	<u>26.378815 -98.192234</u>	<u>26.400504 -98.188199</u>
Amber Ln	4	2354	Edinburg	<u>26.405593 -98.140864</u>	<u>26.406835 -98.149620</u>
Amber Ln	4	2354	Edinburg	<u>26.405593 -98.140864</u>	<u>26.407772 -98.139516</u>
Via Fernandez	4	2059	Edinburg	<u>26.402762 -98.150320</u>	<u>26.406824 -98.149624</u>

Suzette Ln	4	3834	Edinburg	<u>26.405362 -98.144901</u>	<u>26.404042 -98.145126</u>
Becky Ln	4	3835	Edinburg	<u>26.404806 -98.140969</u>	<u>26.403505 -98.141201</u>
Angie Ln	4	3836	Edinburg	<u>26.404140 -98.141047</u>	<u>26.403963 -98.139726</u>
Big 5 Rd	4	1833	Edinburg	<u>26.378932 -98.192200</u>	<u>26.343354 -98.198845</u>
8 1/2 Mile Rd	4	1827	Edinburg	<u>26.328668 -98.247419</u>	<u>26.331072 -98.263111</u>
Mile 8 N Rd	4	1893	Edinburg	<u>26.323835 -98.264409</u>	<u>26.321454 -98.247624</u>
Los Cerritos Cir	4	1913	Edinburg	<u>26.443708 -98.133356</u>	<u>26.439920 -98.133893</u>
Cerritos Linda Dr	4	1914	Edinburg	<u>26.441817 -98.133561</u>	<u>26.442484 -98.138356</u>
Dicker rd	2	235	Alamo	<u>26.114742 -98.135033</u>	<u>26.113139 -98.123049</u>
Dicker Rd	2	227	Alamo	<u>26.113115 -98.123011</u>	<u>26.110878 -98.106699</u>
Las Milpas Rd	2	217	Alamo	<u>26.103675 -98.107968</u>	<u>26.105258 -98.120356</u>
Las Milpas Rd	2	218	Alamo	<u>26.105388 -98.120379</u>	<u>26.106654 -98.129293</u>
Las Milpas Rd	2	219	Alamo	<u>26.106629 -98.129274</u>	<u>26.107598 -98.136131</u>
S Tower Rd	2	131	Alamo	<u>26.079140 -98.128737</u>	<u>26.084285 -98.127959</u>
Anaya Rd	2	1473	Alamo	<u>26.096505 -98.109152</u>	<u>26.095509 -98.102387</u>
Juan Balli Rd	2	269	Alamo	<u>26.127648 -98.121786</u>	<u>26.129095 -98.132446</u>
Anaya Rd	2	1531	Alamo	<u>26.096505 -98.109152</u>	<u>26.090965 -98.089066</u>
Anaya Rd	2	1531	Alamo	<u>26.090318 -98.087094</u>	<u>26.090968 -98.089038</u>
Anaya Rd	2	1531	Alamo	<u>26.090310 -98.087087</u>	<u>26.089873 -98.085737</u>
Pueblo St	2	167	San Juan	<u>26.240843 -98.159335</u>	<u>26.240403 -98.155635</u>
Rodriguez St	2	253	San Juan	<u>26.240423 -98.155607</u>	<u>26.243024 -98.155165</u>
Kennedy Dr	2	261	San Juan	<u>26.243551 -98.158881</u>	<u>26.243053 -98.155183</u>
Inca Dr	2	274	San Juan	<u>26.242951 -98.154529</u>	<u>26.240225 -98.154989</u>
Kennedy Dr	2	73	San Juan	<u>26.243052 -98.155189</u>	<u>26.242541 -98.151628</u>
Aztec Blvd	2	170	San Juan	<u>26.242788 -98.153363</u>	<u>26.237408 -98.154266</u>
Church St	2	215	San Juan	<u>26.242647 -98.159032</u>	<u>26.242133 -98.155328</u>
Water St	2	61	San Juan	<u>26.241737 -98.159181</u>	<u>26.241222 -98.155496</u>
Maya Dr	2	257	San Juan	<u>26.242597 -98.152173</u>	<u>26.239947 -98.152623</u>
Adame	2	106	Edinburg	<u>26.245478 -98.159949</u>	<u>26.244532 -98.159829</u>
Inca Dr	2	274	San Juan	<u>26.240015 -98.155030</u>	<u>26.237564 -98.155446</u>
Toupi Rd	2	251	San Juan	<u>26.240351 -98.152578</u>	<u>26.240792 -98.155521</u>
Maya Dr	2	18	San Juan	<u>26.239768 -98.152675</u>	<u>26.237233 -98.153092</u>
Totec	2	33	San Juan	<u>26.239554 -98.155077</u>	<u>26.239197 -98.152791</u>
Brandon Ln	4	1829	McAllen	<u>26.308785 -98.250429</u>	<u>26.307818 -98.250594</u>
Little St	2	117	San Juan	<u>26.239517 -98.158157</u>	<u>26.238935 -98.158056</u>
Little St	2	116	San Juan	<u>26.239709 -98.159487</u>	<u>26.239558 -98.157640</u>
Moreno St	2	103	San Juan	<u>26.236799 -98.156201</u>	<u>26.236701 -98.155540</u>
Pcnt 2 Park Rd	2	100	San Juan	<u>26.239029 -98.158607</u>	<u>26.239144 -98.159595</u>
Borrego	2	102	San Juan	<u>26.236670 -98.155574</u>	<u>26.236173 -98.155654</u>
Rodriguez St	2	252	San Juan	<u>26.240386 -98.155592</u>	<u>26.234085 -98.156686</u>
Minnesota	2	66	San Juan	<u>26.238088 -98.159766</u>	<u>26.237032 -98.152437</u>
Seminole Valley I	2	305	Alamo	<u>26.239962 -98.120717</u>	<u>26.238032 -98.126118</u>
Remuda Dr	2	159	Alamo	<u>26.235295 -98.126589</u>	<u>26.233143 -98.123644</u>
Pinto Dr	2	27	Alamo	<u>26.234222 -98.126791</u>	<u>26.233774 -98.123556</u>
Viking Ave	2	24	Alamo	<u>26.233368 -98.125573</u>	<u>26.230443 -98.126081</u>
Silverado St	2	4147	Alamo	<u>26.233508 -98.116043</u>	<u>26.232140 -98.116290</u>
Thor Ave	2	26	Alamo	<u>26.232887 -98.122443</u>	<u>26.229988 -98.122945</u>

St Paul Ave	2	142	Alamo	<u>26.230602 -98.127398</u>	<u>26.229817 -98.121683</u>
Brenda Ln	2	202	Alamo	<u>26.230882 -98.127400</u>	<u>26.231243 -98.131003</u>
Tumi Dr	2	4310	Alamo	<u>26.230699 -98.117781</u>	<u>26.230368 -98.115299</u>
San Mateo St	2	13	Alamo	<u>26.225667 -98.135961</u>	<u>26.225305 -98.133119</u>
San Miguel St	2	299	Alamo	<u>26.224921 -98.136083</u>	<u>26.224466 -98.133342</u>
San Lucas St	2	109	Alamo	<u>26.224180 -98.136212</u>	<u>26.223828 -98.133374</u>
Victory Ln	2	8	Alamo	<u>26.222046 -98.128920</u>	<u>26.222695 -98.132642</u>
San Martin St	2	14	Alamo	<u>26.223252 -98.136326</u>	<u>26.222837 -98.133338</u>
San Gabriel St	2	110	Alamo	<u>26.219810 -98.133803</u>	<u>26.225997 -98.132998</u>
San Marcos St	2	6	Alamo	<u>26.222426 -98.136471</u>	<u>26.222013 -98.133455</u>
San Jose St	2	300	Alamo	<u>26.221586 -98.136600</u>	<u>26.221193 -98.133595</u>
San Felipe St	2	113	Alamo	<u>26.220257 -98.136857</u>	<u>26.226429 -98.135857</u>
San Juanita St	2	10	Alamo	<u>26.220748 -98.136758</u>	<u>26.220368 -98.133709</u>
Grandora Dr	2	3804	Alamo	<u>26.220451 -98.138428</u>	<u>26.217535 -98.141462</u>
N Rooth Rd	4	1830	Edinburg	<u>26.362287 -98.228157</u>	<u>26.348014 -98.230804</u>
El Cibolo Rd	4	2468	Edinburg	<u>26.412211 -98.111861</u>	<u>26.413553 -98.115488</u>
Village Dr	4	1656	Edinburg	<u>26.369191 -98.165840</u>	<u>26.368566 -98.161494</u>
Hummingbird Ln	4	No ID	Edinburg	<u>26.354174 -98.086717</u>	<u>26.354430 -98.088521</u>
Sugarbird Ln	4	No ID	Edinburg	<u>26.357330 -98.087148</u>	<u>26.354337 -98.087674</u>
Mandarin Drive	4	4940	Edinburg	<u>26.312608 -98.072447</u>	<u>26.312203 -98.072514</u>
Unknown 1	4	No ID	Edinburg	<u>26.306139 -98.104468</u>	<u>26.305885 -98.102526</u>
Unknown 2	4	No ID	Edinburg	<u>26.305862 -98.102505</u>	<u>26.306863 -98.102351</u>
Unknown 3	4	No ID	Edinburg	<u>26.306989 -98.103015</u>	<u>26.306896 -98.102366</u>
Unknown 4	4	No ID	Edinburg	<u>26.307395 -98.102969</u>	<u>26.305966 -98.103220</u>
Unknown 5	4	No ID	Edinburg	<u>26.306812 -98.103840</u>	<u>26.306091 -98.103959</u>
CR 4031	4	3812	Edinburg	<u>26.406261 -98.183023</u>	<u>26.406851 -98.187003</u>
Minnesota	2	147	Alamo	<u>26.235300 -98.139363</u>	<u>26.233896 -98.129126</u>
Minnesota	2	148	Alamo	<u>26.233896 -98.129124</u>	<u>26.233597 -98.126940</u>
Lilly Dr	2	3797	Alamo	<u>26.219872 -98.137494</u>	<u>26.220059 -98.138583</u>
Dana St	2	3800	Alamo	<u>26.218647 -98.140270</u>	<u>26.217802 -98.137807</u>
Tenaga Dr	2	3798	Alamo	<u>26.219584 -98.139145</u>	<u>26.219187 -98.137587</u>
Carmen St	2	3799	Alamo	<u>26.218503 -98.137694</u>	<u>26.219134 -98.139708</u>
Elaliah St	2	3801	Alamo	<u>26.218158 -98.140912</u>	<u>26.217102 -98.137929</u>
Deidre Cir	2	3802	Alamo	<u>26.217636 -98.140370</u>	<u>26.217394 -98.140633</u>
Retama St	2	3803	Alamo	<u>26.213177 -98.138639</u>	<u>26.220320 -98.137454</u>
Eagle St	2	3805	Alamo	<u>26.216520 -98.139202</u>	<u>26.216365 -98.138109</u>
Garfield St	2	3809	Alamo	<u>26.213599 -98.138597</u>	<u>26.213769 -98.139654</u>
Dove St	2	3806	Alamo	<u>26.215833 -98.139312</u>	<u>26.215678 -98.138221</u>
Bluebird St	2	3808	Alamo	<u>26.214315 -98.138482</u>	<u>26.214466 -98.139541</u>
Cardinal St	2	3807	Alamo	<u>26.215146 -98.139436</u>	<u>26.214986 -98.138352</u>
Cesar Chavez Rd	2	278	Alamo	<u>26.197713 -98.133029</u>	<u>26.224165 -98.128520</u>
Cesar Chavez Rd	2	279	Alamo	<u>26.237505 -98.126225</u>	<u>26.228560 -98.127761</u>
Santos	2	200	Alamo	<u>26.215439 -98.124245</u>	<u>26.215538 -98.125045</u>
Moonlight Ave	2	145	Alamo	<u>26.214258 -98.130178</u>	<u>26.213795 -98.126932</u>
Celinda Dr	2	199	Alamo	<u>26.216589 -98.124056</u>	<u>26.216707 -98.124850</u>
Unknown	2	12	Alamo	<u>26.213341 -98.130320</u>	<u>26.212829 -98.126593</u>
Cecil	2	198	Alamo	<u>26.217862 -98.124650</u>	<u>26.217753 -98.123839</u>

Coy Dr	2	58	Alamo	<a href="#"><u>26.218514 -98.124598</u></a>	<a href="#"><u>26.214960 -98.125167</u></a>
Gearhart Rd	2	201	Alamo	<a href="#"><u>26.218258 -98.122908</u></a>	<a href="#"><u>26.214964 -98.123453</u></a>
Sunshine Dr	2	197	Alamo	<a href="#"><u>26.218104 -98.121911</u></a>	<a href="#"><u>26.214858 -98.122458</u></a>
Jacob Ln	2	213	Alamo	<a href="#"><u>26.210657 -98.120668</u></a>	<a href="#"><u>26.211877 -98.120473</u></a>
Bianca	2	134	Alamo	<a href="#"><u>26.212037 -98.121579</u></a>	<a href="#"><u>26.211793 -98.119863</u></a>