

EXHIBIT C
RESOLUTION IN SUPPORT OF ADOPTING PARK IN MILANOS ESTATES PHASE I
SUBDIVISION

WHEREAS, Milanos Estates Phase I Subdivision is planned 26.43 acre subdivision in Hidalgo County, Precinct 1, located at the southeast corner of the intersection of mile 5 1/2 West Road and Mile 6 1/2 West Road; and

WHEREAS, the developers of Milanos Estates Phase I Subdivision have the intent to dedicate and donate a park to Hidalgo County Precinct 1; and

WHEREAS, while the specific details regarding the location, size and design of the park are still being developed, Precinct 1 Commissioner David L. Fuentes plans to adopt and maintain the park; and

WHEREAS, further steps have to be taken for Precinct 1 to adopt the park, including but not limited to dedicating land to Hidalgo county and obtain approval from the county's legal counsel; and

WHEREAS, the developers of Milanos Estates Phase I Subdivision and Hidalgo County Precinct 1 will continue working together on this critical project.

NOW, THEREFORE, BE IT RESOLVED that the developers of Milanos Estates Phase I Subdivision have the intent to dedicate and donate a park to Hidalgo County Precinct 1; Hidalgo County Precinct 1 has the intent to adopt and maintain the park in Milanos Estates Phase I Subdivision; and the developers of Milanos Estates Phase I Subdivision and Hidalgo County Precinct 1 will continue working together on this critical project for our community's health, safety, and economic growth.

Approved this _____.

RICHARD F. CORTEZ
County Judge

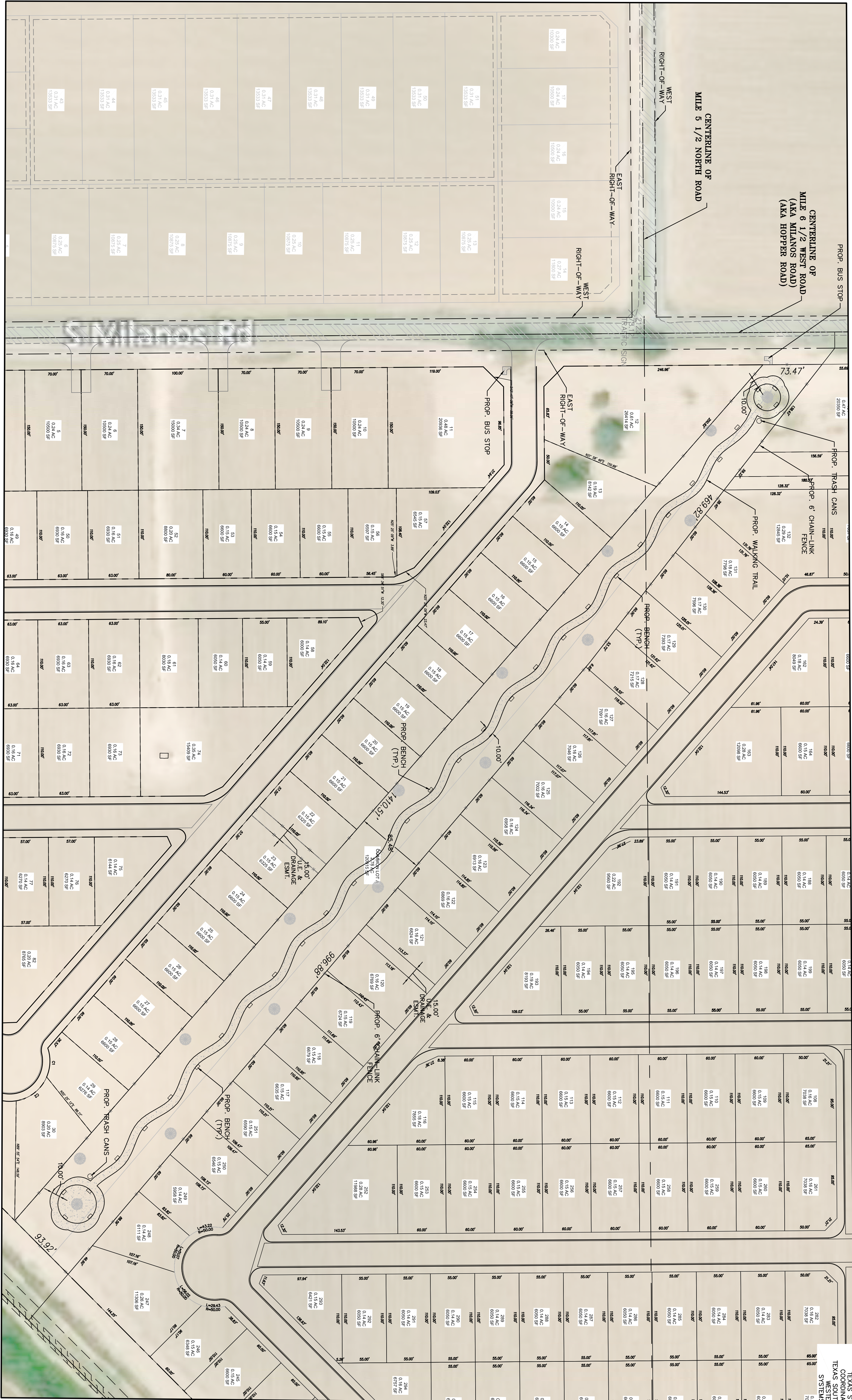
DAVID L. FUENTES
County Commissioner, Pct. 1

EDUARDO "EDDIE" CANTU
County Commissioner, Pct. 2

EVERARDO "EVER" VILLARREAL
County Commissioner, Pct. 3

ELLIE TORRES
County Commissioner, Pct. 4

Attest: ARTURO GUAJARDO, JR.
County Clerk



SCALE: 1" = 60'
 BEARING BASIS
 TEXAS STATE PLANE
 COORDINATES NAD 83
 TCRN WESTERN DATA
 SYSTEMS NETWORK

PROJECT: **PRELIMINARY PARK LAYOUT**
MILANOS ESTATES PHASE I SUBDIVISION
 HIDALGO COUNTY, TEXAS

DESIGNED BY: VANI GARCIA P.E., R.P.L.S.
 CHECKED BY: VANI GARCIA P.E., R.P.L.S.
 DRAWN BY: EDWIN PENIA

DATE: MARCH 15, 2021
 PROJECT: SUB 19.028

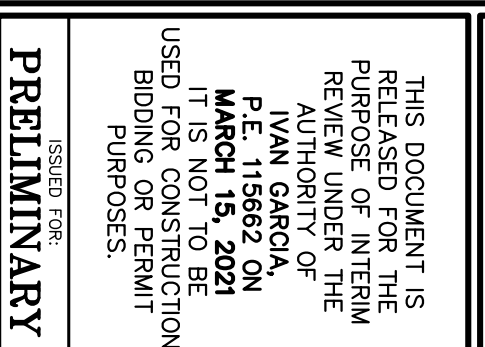
SCALE: AS SHOWN

FRAME NO. **1-OF-1**

THIS DOCUMENT IS FOR INFORMATION PURPOSES ONLY. IT IS NOT TO BE USED FOR CONSTRUCTION OR PERMIT PURPOSES.

ISSUED FOR: **PRELIMINARY**

DATE: MARCH 15, 2021



RIO DELTA ENGINEERING

FIRM REGISTRATION No. F-7628
 SURVEY FIRM No. 10194027
 921 S. 10TH AVENUE EDINBURG, TEXAS 78539
 (TEL) 956-380-5152 (FAX) 956-380-5083