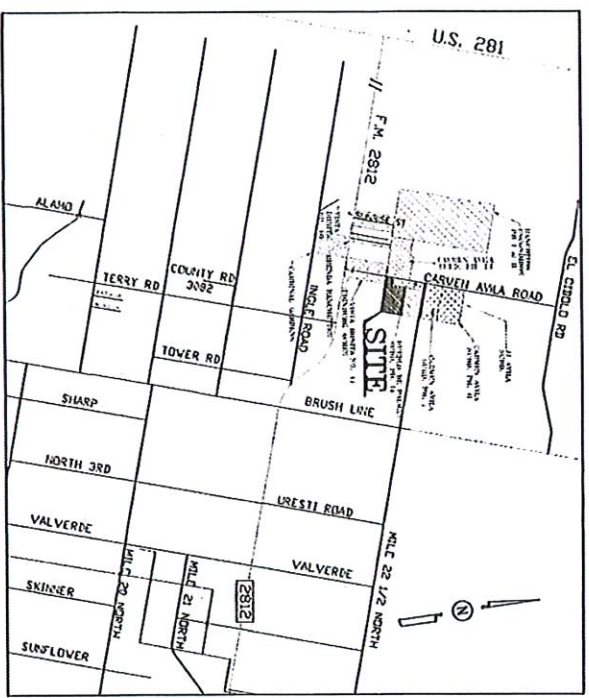


CARMEN AVILA SUBDIVISION PHASE V
**WATERLINE, SANITARY SEWER COLLECTION,
 PAVING AND DRAINAGE SYSTEMS**



**Preliminary Layout
 -Not for Preliminary or Final
 Approval Nor Recording**



Handwritten signature

Date

QUINTANILLA, HEADLEY AND ASSOCIATES, INC.
 CONSULTING ENGINEERS
 2400 W. 17th St.
 Midland, TX 79705
 ENGINEERING REGISTRATION NUMBER F-1313
 SURVEYING REGISTRATION NUMBER 100411-00

LAND SURVEYORS
 PHONE 506-231-0480
 FAX 506-231-0527
 d10nsoo@qha-inc.com

