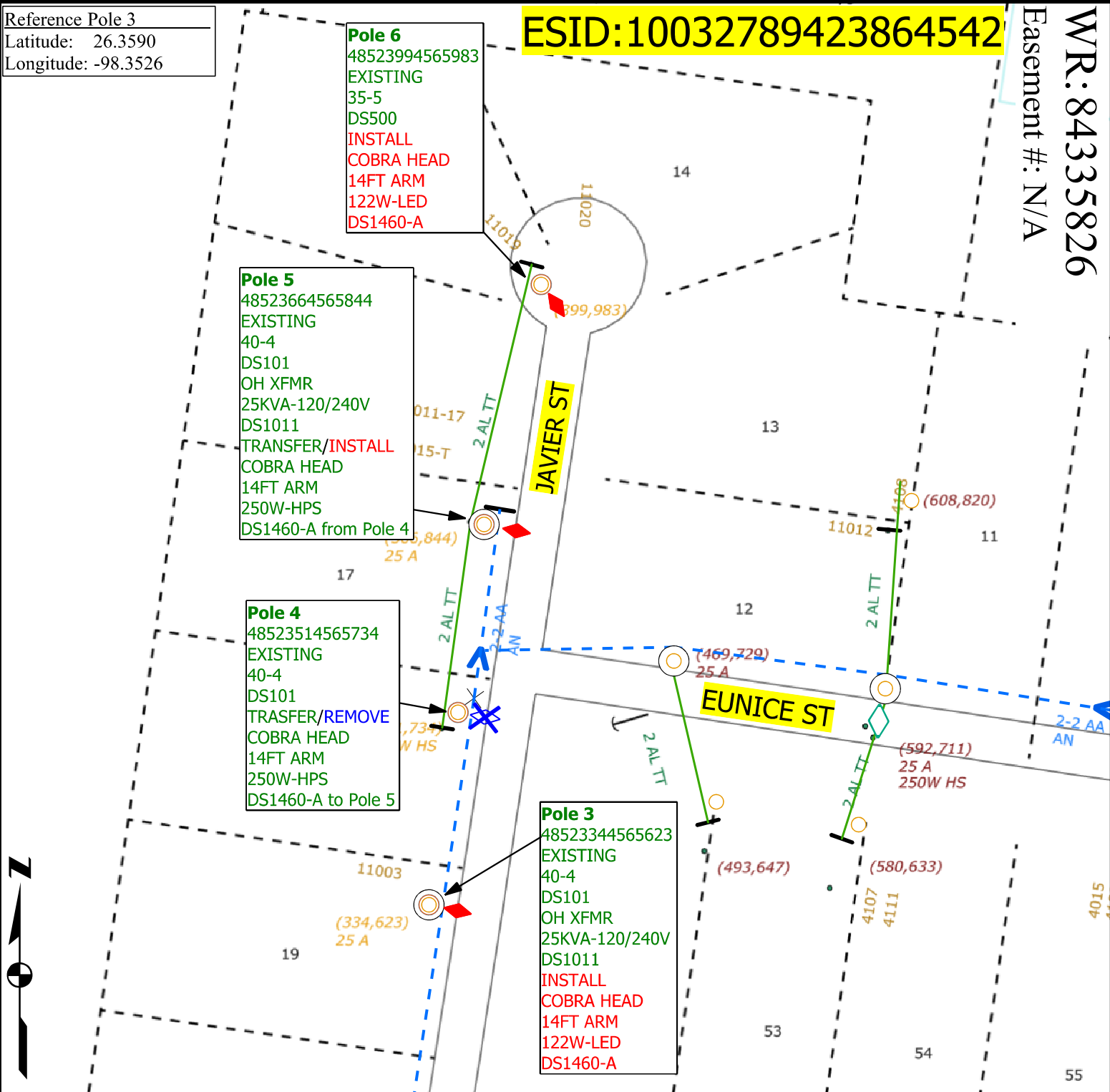




Reference Pole 3  
 Latitude: 26.3590  
 Longitude: -98.3526

**ESID: 10032789423864542**

WR: 84335826  
 Easement #: N/A



**Note to Crew:**  
 -Update each pole ID tag with correct 14 digit GPS location number marked in **RED** which matches the XY coordinates obtained by GPS. **Blue** numbers refer to previous location ID  
 -STREET LIGHT JOB-CUSTOMER HIDALGO COUNTY Martin Martinez 956-292-7025 SERVICE TECH-ARMANDO MORALES-956-460-3328  
 -INSTALL 6 122W LED STREET LIGHT WITH 14FT BRACKET AND TRANSFER 1 EXISTING STREET LIGHT

Job Description: CUSTOMER SERVICE-CI-NEW STREET LIGHTS		WR: 84335826	
		WO: 342376	
Customer: MARTIN MARTINEZ		Date Completed: 2/1/23	
Location: 4213 IDELMA ST		County: HIDALGO	
District: 175 - Mission		City: MISSION	
Circuit / Station: 94SB3960/MOORE FIELD		N V: 12.47KV	
Phases: AB N		Crew HQ: 11712	
Drawn By: Cyven Hernandez		Tree Trimming: NO	
Office #: (956)283-2324 Cell#:(956)776-3447		Accessible: YES	
Issued for:		OWR: 84228578	
<b>FINAL</b>		ESID: 10032789423864542	
		Scale: 1:80	
Rev: N/A		Page 2 of 2	

