



# Rio Grande Valley Emergency Communication District

Sheriff J. E. "Eddie" Guerra, Hidalgo County Sheriff..... President  
Mayor Gilbert Gonzales, Raymondville ..... Vice President  
Mayor David Suarez, Weslaco.....Secretary  
City Commissioner District 2 Joaquin "J.J." Zamora, McAllen..... Treasurer

April 17, 2023

## RGV9-1-1 BOARD OF MANAGERS

Arturo Galvan Jr.  
Mayor Pro Tem, Alton

Ramiro Garza Jr.  
Mayor, Edinburg

Alonzo "AL" Perez Jr  
Mayor, Elsa

Yvette Cabrera  
Mayor, Granjeno

Oscar D. Montoya  
Mayor, Mercedes

Ramiro Loya  
Mayor, Penitas

Alma D. Salinas  
Mayor, Sullivan City

Judge Aurelio "Keeter"  
Guerra  
Willacy County

Mrs. Ellie Torres, County Commissioner  
Hidalgo County Precinct 4  
1015 N Doolittle  
Edinburg, TX 78541

The RGVECD 9-1-1 Department acknowledges the County's notification on the following **PROPOSED NAME**:

**La Coma SR**– to name a road that runs East to West off Brushline Rd in the **Edinburg** community.

A query was done on the state 9-1-1 database and found no match for the proposed name in the system. It is recommended for the proposed street name to be utilized for naming the street/road specified

MSAG Query

NO RESULTS WERE FOUND, PLEASE TRY A DIFFERENT QUERY AND CHECK YOUR REGION.

Include TN Count in Query Results

MSAG Type: All MSAG Types

Low House #: High House #: O/E: All

Dir: Street: LA COMA

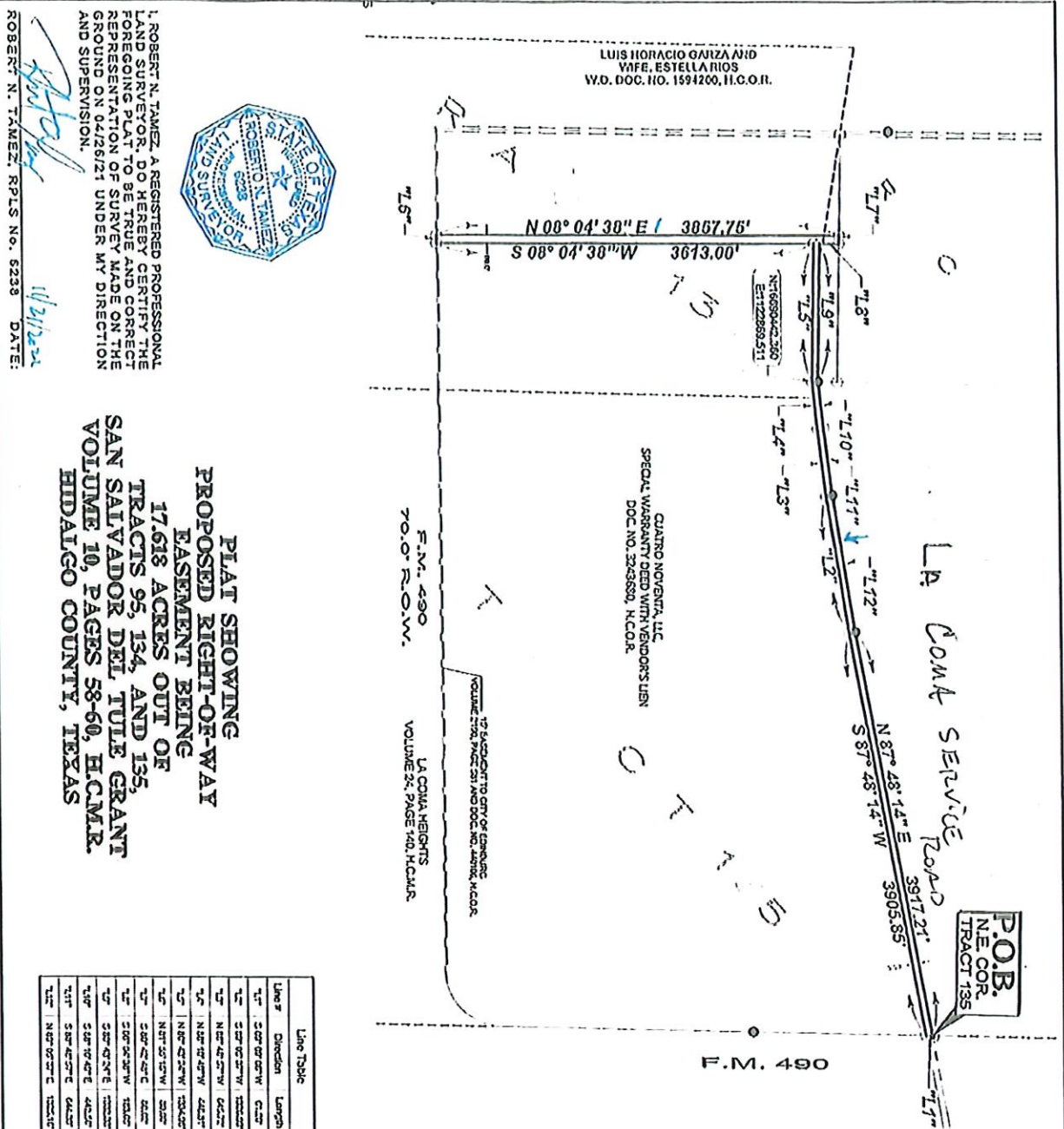
Community: EDINBURG County: State: TX

SR Tandem: Exchange: ESN: Agency ID:

## STAFF:

EXECUTIVE DIRECTOR  
Manuel "Manny" Cruz

ACKNOWLEDGED ON: April 17, 2023  
RESEARCHED BY: Rosemary Contreras  
TITLE: Customer Service



I, ROBERT N. TAMEZ, A REGISTERED PROFESSIONAL LAND SURVEYOR, DO HEREBY CERTIFY THE FOREGOING PLAT TO BE TRUE AND CORRECT REPRESENTATION OF SURVEY MADE ON THE GROUND ON 04/26/21 UNDER MY DIRECTION AND SUPERVISION.

ROBERT N. TAMEZ, R.P.L.S. No. 5238 DATE: 4/26/21



**PLAT SHOWING  
PROPOSED RIGHT-OF-WAY  
EASEMENT BEING  
17.618 ACRES OUT OF  
TRACTS 95, 134, AND 135,  
SAN SALVADOR DEL TULE GRANT  
VOLUME 10, PAGES 58-60, H.C.M.R.  
HIDALGO COUNTY, TEXAS**

Line #	Direction	Length
1 <sup>st</sup>	S 08° 04' 30" W	3673.00'
2 <sup>nd</sup>	S 08° 04' 30" W	3673.00'
3 <sup>rd</sup>	S 08° 04' 30" W	3673.00'
4 <sup>th</sup>	N 08° 04' 30" E	3673.00'
5 <sup>th</sup>	N 08° 04' 30" E	3673.00'
6 <sup>th</sup>	N 08° 04' 30" E	3673.00'
7 <sup>th</sup>	N 08° 04' 30" E	3673.00'
8 <sup>th</sup>	N 08° 04' 30" E	3673.00'
9 <sup>th</sup>	N 08° 04' 30" E	3673.00'
10 <sup>th</sup>	N 08° 04' 30" E	3673.00'
11 <sup>th</sup>	N 08° 04' 30" E	3673.00'
12 <sup>th</sup>	N 08° 04' 30" E	3673.00'
13 <sup>th</sup>	N 08° 04' 30" E	3673.00'
14 <sup>th</sup>	N 08° 04' 30" E	3673.00'
15 <sup>th</sup>	N 08° 04' 30" E	3673.00'
16 <sup>th</sup>	N 08° 04' 30" E	3673.00'
17 <sup>th</sup>	N 08° 04' 30" E	3673.00'
18 <sup>th</sup>	N 08° 04' 30" E	3673.00'
19 <sup>th</sup>	N 08° 04' 30" E	3673.00'
20 <sup>th</sup>	N 08° 04' 30" E	3673.00'
21 <sup>st</sup>	N 08° 04' 30" E	3673.00'
22 <sup>nd</sup>	N 08° 04' 30" E	3673.00'
23 <sup>rd</sup>	N 08° 04' 30" E	3673.00'
24 <sup>th</sup>	N 08° 04' 30" E	3673.00'
25 <sup>th</sup>	N 08° 04' 30" E	3673.00'
26 <sup>th</sup>	N 08° 04' 30" E	3673.00'
27 <sup>th</sup>	N 08° 04' 30" E	3673.00'
28 <sup>th</sup>	N 08° 04' 30" E	3673.00'
29 <sup>th</sup>	N 08° 04' 30" E	3673.00'
30 <sup>th</sup>	N 08° 04' 30" E	3673.00'
31 <sup>st</sup>	N 08° 04' 30" E	3673.00'
32 <sup>nd</sup>	N 08° 04' 30" E	3673.00'
33 <sup>rd</sup>	N 08° 04' 30" E	3673.00'
34 <sup>th</sup>	N 08° 04' 30" E	3673.00'
35 <sup>th</sup>	N 08° 04' 30" E	3673.00'
36 <sup>th</sup>	N 08° 04' 30" E	3673.00'
37 <sup>th</sup>	N 08° 04' 30" E	3673.00'
38 <sup>th</sup>	N 08° 04' 30" E	3673.00'
39 <sup>th</sup>	N 08° 04' 30" E	3673.00'
40 <sup>th</sup>	N 08° 04' 30" E	3673.00'
41 <sup>st</sup>	N 08° 04' 30" E	3673.00'
42 <sup>nd</sup>	N 08° 04' 30" E	3673.00'
43 <sup>rd</sup>	N 08° 04' 30" E	3673.00'
44 <sup>th</sup>	N 08° 04' 30" E	3673.00'
45 <sup>th</sup>	N 08° 04' 30" E	3673.00'
46 <sup>th</sup>	N 08° 04' 30" E	3673.00'
47 <sup>th</sup>	N 08° 04' 30" E	3673.00'
48 <sup>th</sup>	N 08° 04' 30" E	3673.00'
49 <sup>th</sup>	N 08° 04' 30" E	3673.00'
50 <sup>th</sup>	N 08° 04' 30" E	3673.00'
51 <sup>st</sup>	N 08° 04' 30" E	3673.00'
52 <sup>nd</sup>	N 08° 04' 30" E	3673.00'
53 <sup>rd</sup>	N 08° 04' 30" E	3673.00'
54 <sup>th</sup>	N 08° 04' 30" E	3673.00'
55 <sup>th</sup>	N 08° 04' 30" E	3673.00'
56 <sup>th</sup>	N 08° 04' 30" E	3673.00'
57 <sup>th</sup>	N 08° 04' 30" E	3673.00'
58 <sup>th</sup>	N 08° 04' 30" E	3673.00'
59 <sup>th</sup>	N 08° 04' 30" E	3673.00'
60 <sup>th</sup>	N 08° 04' 30" E	3673.00'
61 <sup>st</sup>	N 08° 04' 30" E	3673.00'
62 <sup>nd</sup>	N 08° 04' 30" E	3673.00'
63 <sup>rd</sup>	N 08° 04' 30" E	3673.00'
64 <sup>th</sup>	N 08° 04' 30" E	3673.00'
65 <sup>th</sup>	N 08° 04' 30" E	3673.00'
66 <sup>th</sup>	N 08° 04' 30" E	3673.00'
67 <sup>th</sup>	N 08° 04' 30" E	3673.00'
68 <sup>th</sup>	N 08° 04' 30" E	3673.00'
69 <sup>th</sup>	N 08° 04' 30" E	3673.00'
70 <sup>th</sup>	N 08° 04' 30" E	3673.00'
71 <sup>st</sup>	N 08° 04' 30" E	3673.00'
72 <sup>nd</sup>	N 08° 04' 30" E	3673.00'
73 <sup>rd</sup>	N 08° 04' 30" E	3673.00'
74 <sup>th</sup>	N 08° 04' 30" E	3673.00'
75 <sup>th</sup>	N 08° 04' 30" E	3673.00'
76 <sup>th</sup>	N 08° 04' 30" E	3673.00'
77 <sup>th</sup>	N 08° 04' 30" E	3673.00'
78 <sup>th</sup>	N 08° 04' 30" E	3673.00'
79 <sup>th</sup>	N 08° 04' 30" E	3673.00'
80 <sup>th</sup>	N 08° 04' 30" E	3673.00'
81 <sup>st</sup>	N 08° 04' 30" E	3673.00'
82 <sup>nd</sup>	N 08° 04' 30" E	3673.00'
83 <sup>rd</sup>	N 08° 04' 30" E	3673.00'
84 <sup>th</sup>	N 08° 04' 30" E	3673.00'
85 <sup>th</sup>	N 08° 04' 30" E	3673.00'
86 <sup>th</sup>	N 08° 04' 30" E	3673.00'
87 <sup>th</sup>	N 08° 04' 30" E	3673.00'
88 <sup>th</sup>	N 08° 04' 30" E	3673.00'
89 <sup>th</sup>	N 08° 04' 30" E	3673.00'
90 <sup>th</sup>	N 08° 04' 30" E	3673.00'
91 <sup>st</sup>	N 08° 04' 30" E	3673.00'
92 <sup>nd</sup>	N 08° 04' 30" E	3673.00'
93 <sup>rd</sup>	N 08° 04' 30" E	3673.00'
94 <sup>th</sup>	N 08° 04' 30" E	3673.00'
95 <sup>th</sup>	N 08° 04' 30" E	3673.00'
96 <sup>th</sup>	N 08° 04' 30" E	3673.00'
97 <sup>th</sup>	N 08° 04' 30" E	3673.00'
98 <sup>th</sup>	N 08° 04' 30" E	3673.00'
99 <sup>th</sup>	N 08° 04' 30" E	3673.00'
100 <sup>th</sup>	N 08° 04' 30" E	3673.00'

**MEDDEN & HUNT INC.**  
CONSULTANTS - DESIGNERS - SURVEYORS

1115 W. MCKINTYRE  
EDINBURG, TX 76021  
PH: (261) 251-4291  
FAX: (261) 251-4293  
WWW.MEDDENHUNT.COM

PAGE 3 OF 5  
DATE: 11/17/2020  
JOB NO. 21471  
FILE NUMBER: 21471  
DRAWN BY: EVL

© COPYRIGHT 2020 MEDDEN & HUNT, INC. ALL RIGHTS RESERVED

**LEGEND**

- FOUND NO. 4 REBAR
- SET NO. 4 REBAR WITH PLASTIC CAP STAMPED WELDEN & HUNT
- R.O.W. - RIGHT OF WAY
- H.C.M.R. - HIDALGO COUNTY MAP RECORDS
- H.C.D.R. - HIDALGO COUNTY DEED RECORDS
- H.C.O.R. - HIDALGO COUNTY OFFICIAL RECORDS
- DOC. NO. - DOCUMENT NUMBER
- NE COR. - NORTHEAST CORNER
- W.D. - WARRANTY DEED

**NOTES:**

1. SURVEY IS VALID ONLY IF FRONT WAS ORIGINAL SET & REBARMENT OF SURVEYOR.
2. SURVEY WAS REBARRED WITHOUT THE CONSENT OF THIS COMPANY WHICH MAY SHOW ADDITIONAL EVIDENCE AFFECTING THIS TRACT. THE SURVEYOR IS ASSUMING THE RESPONSIBILITY OF THIS PLAT THAT ADDITIONAL DECISIONS MAY AFFECT THIS TRACT.
3. ALL DISTANCES AND BEARINGS ARE GIVEN ON OLD COORDINATE.

**EXHIBIT "B"**

SCALE: 1"=100'

LEGADO PASA PAS PER TEXAS  
COORDINATE SYSTEM OF 1983, TEXAS 830111

**EXHIBIT "A"**

November 21, 2022

**METES AND BOUNDS DESCRIPTION  
PROPOSED RIGHT OF WAY  
EASEMENT  
17.618 ACRES OUT OF  
TRACTS 95, 134, AND 135,  
SAN SALVADOR DEL TULE GRANT  
HIDALGO COUNTY, TEXAS**

A tract of land containing 17.618 of one acre situated in Hidalgo County, Texas, being a part or portion out of Lots 95, 134 and 35, San Salvador Del Tule Grant, according to the plat thereof recorded in Volume 10, Pages 58-60, Hidalgo County Map Records, which said 17.618 Acres are out of a certain tract conveyed to Cuatro Noventa, LLC, Special Warranty Deed With Vendors Lien, recorded under Document number 3243680, Hidalgo County Official Records, said 17.618 Acres also being more particularly described as follows:

**BEGINNING** at a pipe found on the Northeast corner of said tract 135, for the Northeast corner of this herein described tract;


1. THENCE, S 09° 09' 06" W along the East line of said Lot 35, a distance of 61.19 feet to a No. 4 rebar set for an outside corner of this tract;
2. THENCE, S 87° 48' 14" W a distance of 3,905.89 feet to a No. 4 rebar set for an angle point of this tract;
3. THENCE, S 89° 05' 37" W a distance of 1,326.93 feet to a No. 4 rebar set for an angle point of this tract;
4. THENCE, N 88° 48' 57" W a distance of 645.72 feet to a No. 4 rebar for an angle point of this tract;
5. THENCE, N 88° 10' 49" W a distance of 446.81 feet to a No. 4 rebar set for an angle point of this tract;
6. THENCE, N 80° 43' 24" W a distance of 1,334.98 feet to a No. 4 rebar set for an inside corner of this tract;
7. THENCE, S 08° 04' 38" W a distance of 3,613.00 feet to a No. 4 rebar set on the North right-of-way line of F.M. 490, for the Southeast corner of this tract;
8. THENCE, N 81° 55' 15" W along the North right of way line of F.M. 490, a distance of 80.00 feet to a No. 4 rebar set for Southwest corner of this tract;
9. THENCE, N 08° 04' 38" E a distance of 3,857.75 feet to a No. 4 rebar set for the Northwest corner of this tract;
10. THENCE, S 80° 42' 48" E a distance of 80.02 feet to a No. 4 rebar set for an outside corner of this tract;
11. THENCE, S 08° 04' 38" W a distance of 183.05 feet to a No. 4 rebar set for an inside corner of this tract;
12. THENCE, S 80° 43' 24" E a distance of 1,332.33 feet to a No. 4 rebar found for an inside corner of this tract;
13. THENCE, S 88° 10' 49" E along the North line of said tract Lot 35, a distance of 442.56 feet to a No. 4 rebar set for an angle point of this tract;

14. THENCE, S 88° 48' 57" E along the North line of said tract Lot 35, a distance of 644.30 feet to a No. 4 rebar found for an angle point of this tract;

15. THENCE, N 89° 05' 37" E a distance of 1,325.16 feet to a No. 4 rebar found along for an angle point of this tract;

16. THENCE, N 87° 48' 14" E along the North line of said tract Lot 35, a distance of 3,917.21 feet to the POINT OF BEGINNING and containing 17.618 acres of one acre of land, more or less.

I, ROBERT N. TAMEZ, A REGISTERED PROFESSIONAL LAND SURVEYOR DO HEREBY AFFIRM THAT THIS METES AND BOUNDS DESCRIPTION REPRESENTS THE RESULTS OF A SURVEY MADE ON THE GROUND ON 05/21/2021 UNDER MY DIRECTION AND SUPERVISION.

  
ROBERT N. TAMEZ, R.P.L.S. #6238      DATE: 11/21/2021

