

WR:86460514
Easement #:N/A

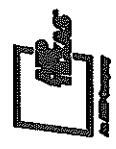


Reference: P.O.L.E. 89
Latitude: 26.2687
Longitude: -98.4418

City of Peñitas
Contact: Andy Morales
956-522-5529
97 - 19W LED Lights with 14ft Arm
ESID#10032789472186294

COLOR CODE LEGEND
RED - New Facilities
GREEN - Existing Transfer Facilities
BLUE - Facilities to Be Removed

Job Description: CUSTOMER SERVICE-C-NEW SERVICE	
Customer: Adrian Perez	Date Completed: 01/02/2024
Location: 175 Hidalgo County Urban Program	County: HIDALGO
Client: 175 - Mission	Crew HQ: 1712
Circuit / Station: 945BMS/GOODWIN	Phase: ABC-N
Drawn By: Benoit Conze	OWR: N/A
Office #: 956-503-3416	ESID: 10032789472186294
Issued for:	Scale: 1:140
	Page: 1 of 8



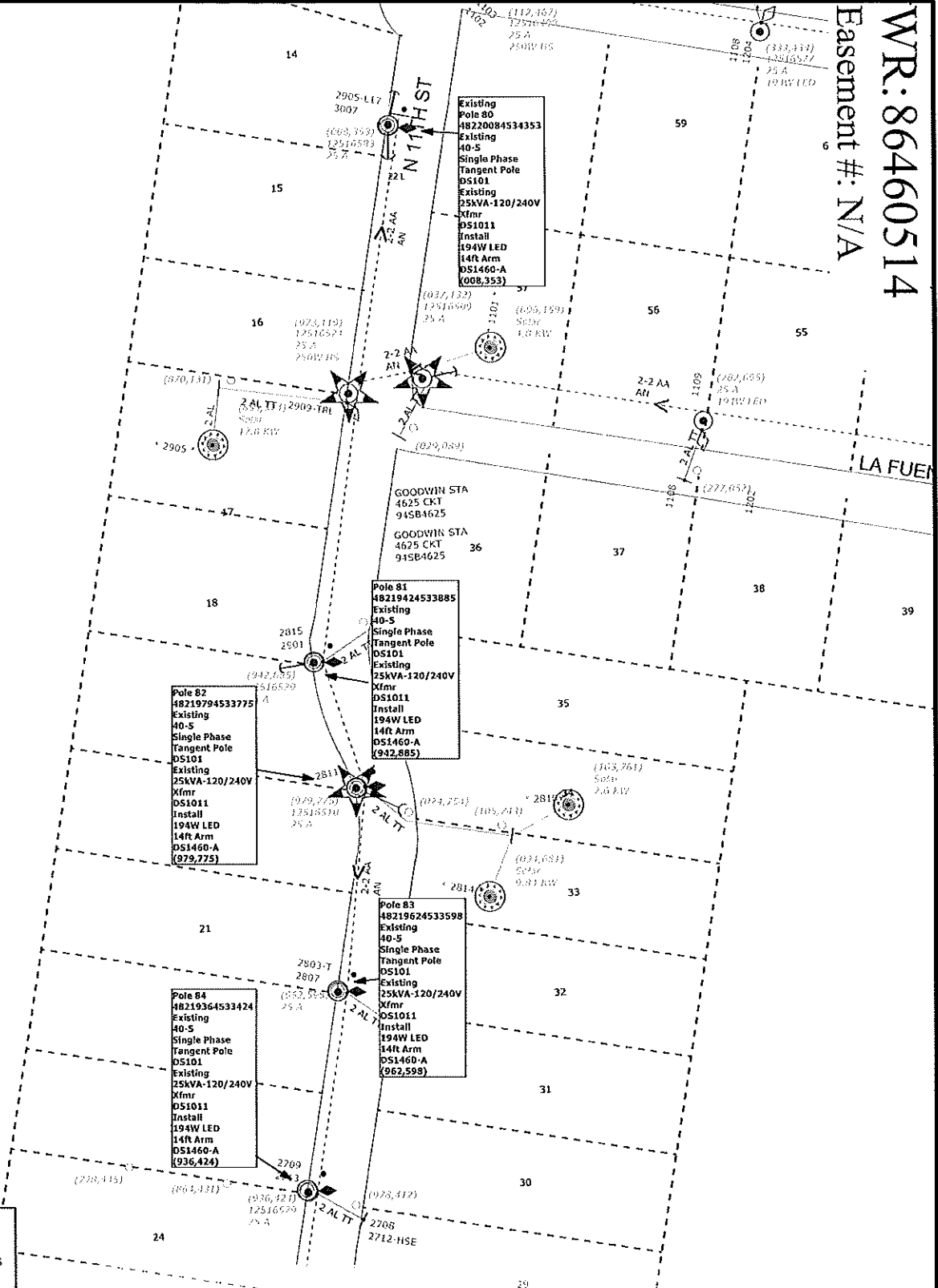
FINAL

Reference POLE 80
 Latitude: 26.2734
 Longitude: -98.4457

WR: 86460514
 Easement #: N/A

GOODWIN STA
 4625 CKT
 94SB4625

GOODWIN STA
 4625 CKT
 94SB4625



COLOR CODE LEGEND
 RED -New Facilities
 GREEN -Existing/Transfer Facilities
 BLUE -Facilities to Be Removed

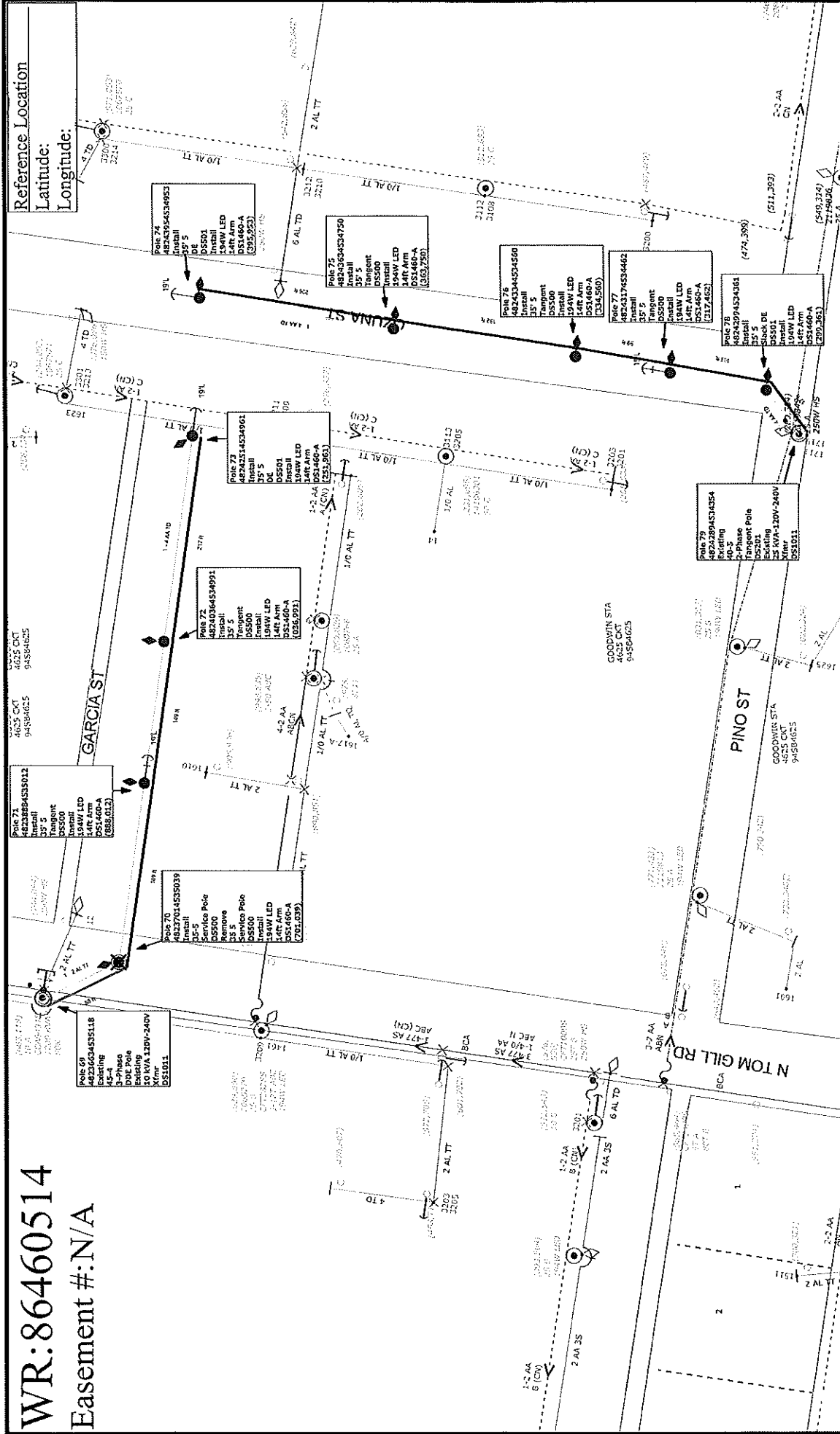
Job Description: CUSTOMER SERVICE-CI-NEW SERVICE			WR: 86460514	
			WO:	
Customer: Adrian Perez		Date Completed: 01/02/2024	Man Hours: 306.95	
Location: 175 Hidalgo County Urban Program		County: HIDALGO	Project ID: 100039	
District: 175 - Mission	City: PENITAS	Crew HQ: 11712		
Circuit / Station: 94SB4625/GOODWIN		N V: 12.47KV		Phases: ABC N
Drawn By: Beatriz Cortez	Tree Trimming: NO	OWR: N/A		
Office #: 956-283-2416	Accessible: YES	ESID: N/A		
Issued for:		Scale: 1:130		Page 2 of 8

FINAL

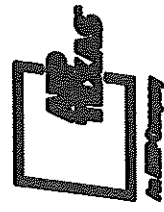
Rev. N/A

WR: 86460514
Easement #: N/A

Reference Location
Latitude:
Longitude:



Job Description: CUSTOMER SERVICE-NEW SERVICE	
Customer: Adrian Perez	Man Hours:
Location: 175 Hidalgo County Urban Program	Project ID:
District: 175 - Mission	Date Completed:
Circuit / Station: N.V. 12.47KV	County: HIDALGO
Drawn By: Beatriz Cortez	Crew HQ: 11712
Office #: Accessible:	Phases: ABCN
	OWR: N/A
	ESID: N/A
Issued for:	Scale: 1"=100'
	Page 3 of 8



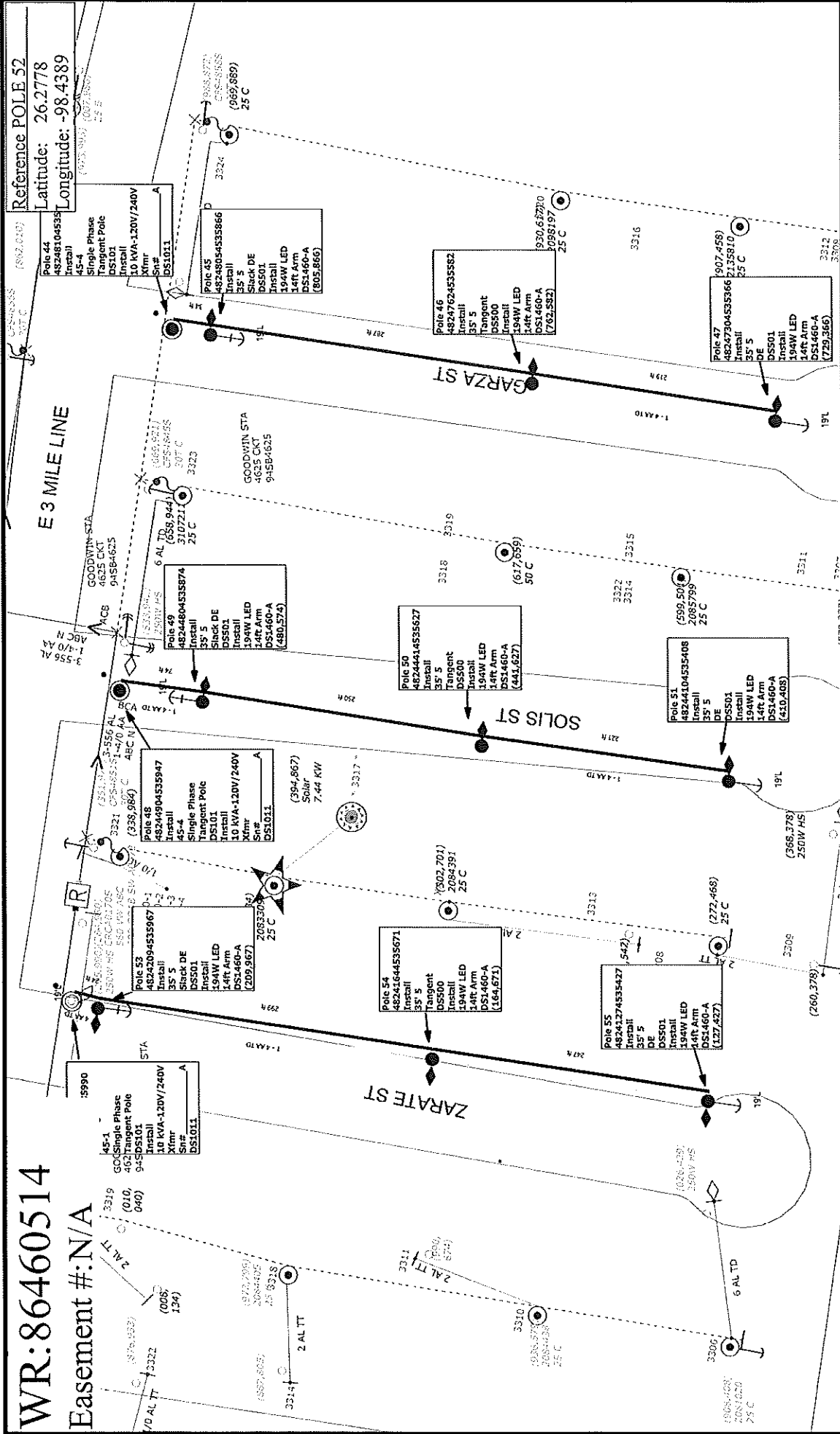
COLOR CODE LEGEND
 RED -New Facilities
 GREEN -Existing/Transfer Facilities
 BLUE -Facilities to Be Removed

Preliminary

Rev: N/A

WR: 86460514
Easement #: N/A

Reference POLE 52
Latitude: 26.2778
Longitude: -98.4389



Job Description: CUSTOMER SERVICE-CLNEW SERVICE		WR: 86460514
Customer: Adrian Perez		WO:
Location: 175 Hidalgo County Urban Program		Man Hours: 306.95
District: 175 - Mission		Project ID: 100039
Circuit / Station: 94SB625/GOODWIN		
Drawn By: Beatriz Centez		
Office #: 956-283-2416		
Issued for:		
City: PENITAS		
N/V: 12.47KV		
Tree Trimming: NO		
Accessible: NO		
Phases: ABCN		
OWR: N/A		
ESID: 10032789472186294		
Scale: 1"=100'		
Date Completed: 01/02/2024		
County: HIDALGO		
Crew HQ: 11712		

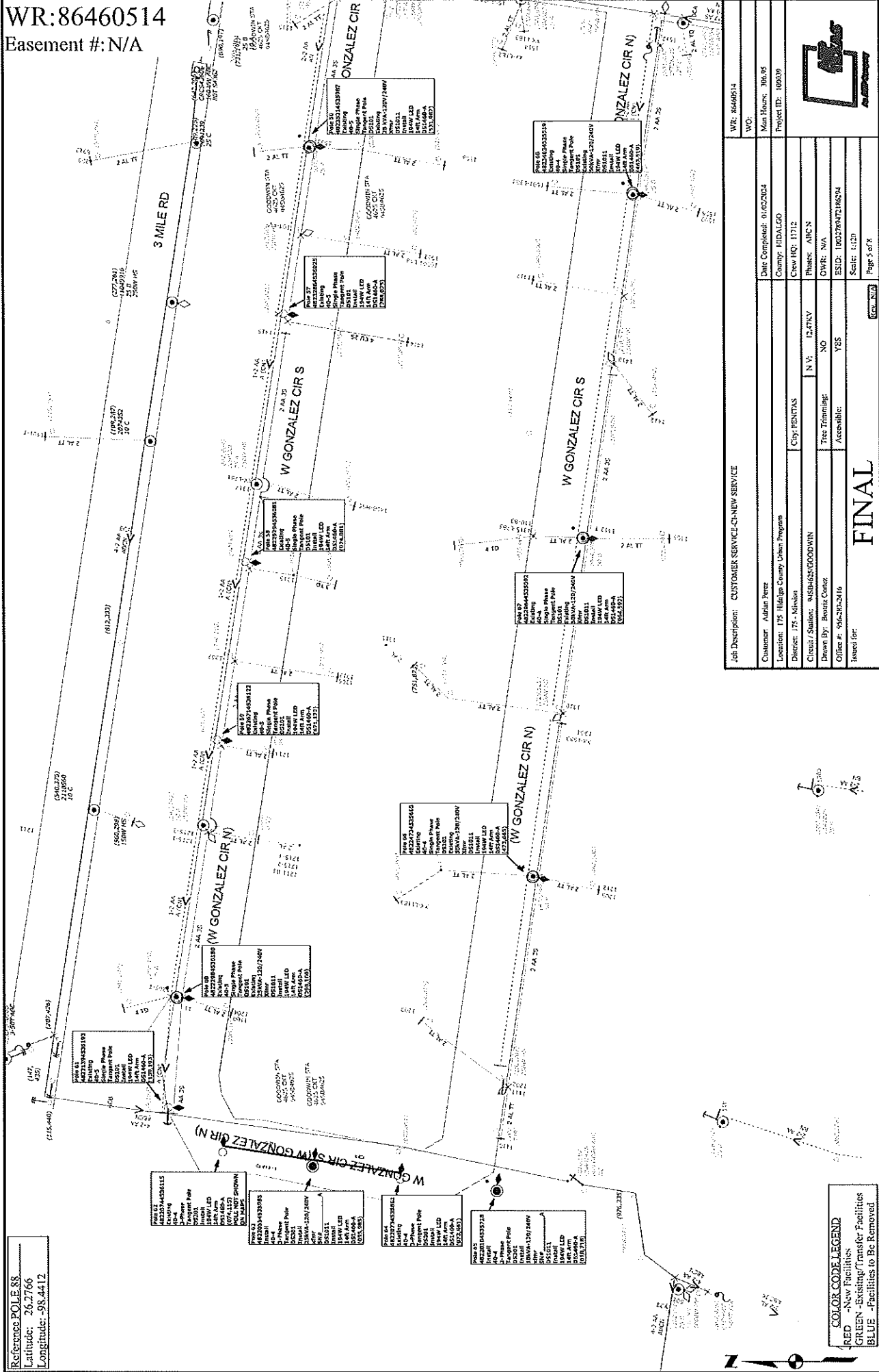
COLOR CODE LEGEND

- RED -New Facilities
- GREEN -Existing/Transfer Facilities
- BLUE -Facilities to Be Removed

FINAL

Page 4 of 8

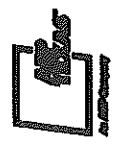
WR:86460514
Easement #:N/A



Reference POLE 88
Latitude: 26.2766
Longitude: -98.4412

COLOR CODE LEGEND
RED - New Facilities
GREEN - Existing/Transfer Facilities
BLUE - Facilities to Be Removed

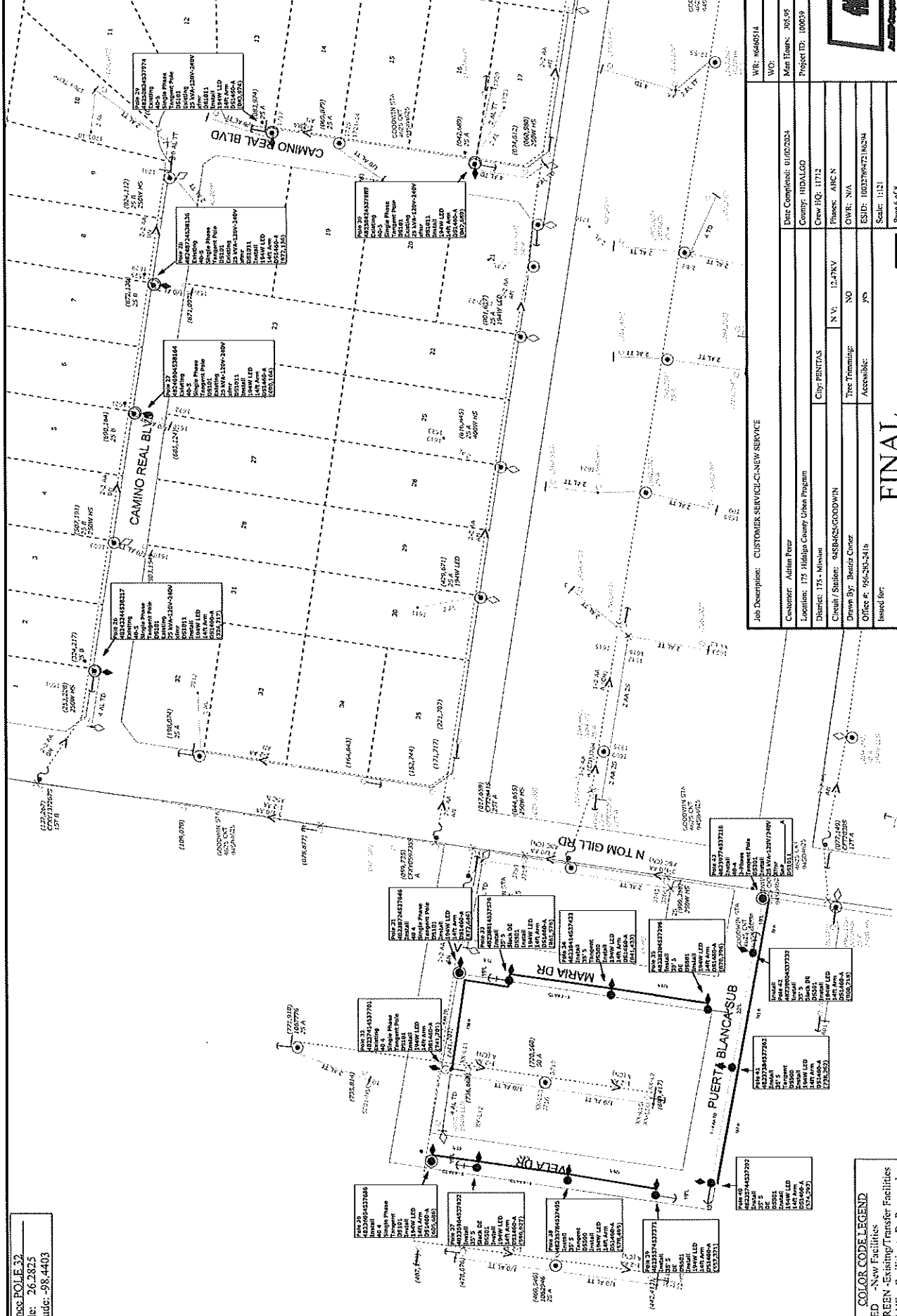
Job Description: CUSTOMER SERVICE-CH-NEW SERVICE		WR: 86460514
Customer: Adrian Perez	Date Completed: 01/02/2024	WO: 100039
Location: 175 Hidalgo County Urban Program	County: HIDALGO	Main Hours: 10:00-5:00
Director: J. S. Minchin	Crew HQ: 11712	Project ID: 100039
Circuit / Station: 94584-02/GOODWIN	City: BENTON	
Drawn By: Beatrix Gomez	N/W: 12.47KV	
Office #: 956290-2416	Tree Trimming: NO	
Issued For:	Accessible: YES	
	ESID: 100278472166294	
	Scale: 1:120	
	Page 5 of 8	



FINAL

WR:86460514

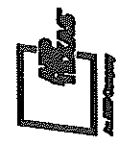
Basement #: N/A



Reference: POLE 32
 Latitude: 26.2825
 Longitude: -98.4403

COLOR CODE LEGEND
 RED - New Facilities
 GREEN - Existing/Transfer Facilities
 BLUE - Facilities to Be Removed

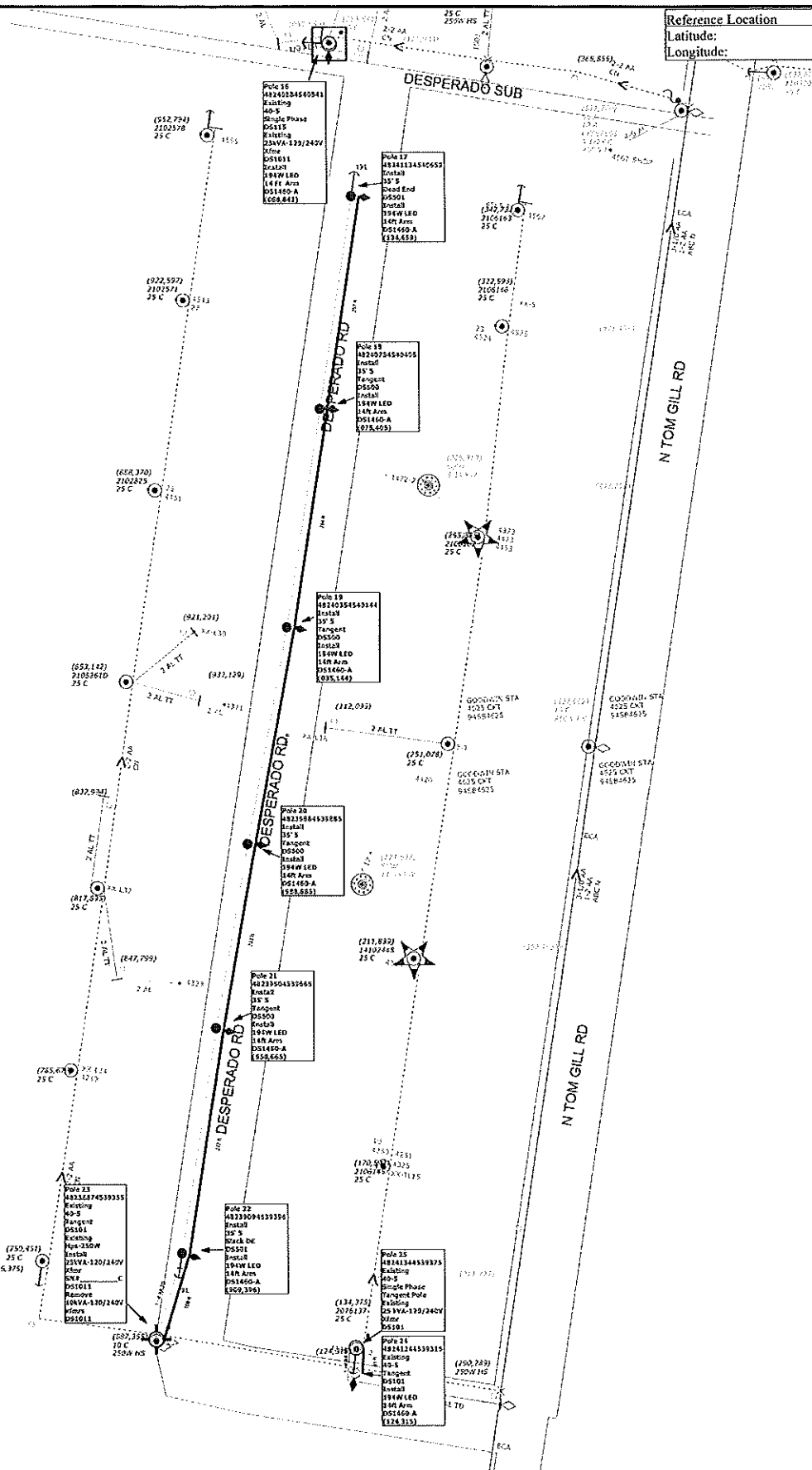
Job Description: CUSTOMER SERVICE-C-NEW SERVICE	
Customer: Adlin Pater	Date Completed: 01/02/2024
Location: 175 Hidalgo County Urban Program	County: HIDALGO
Sheet: 175 - Mission	Crew HQ: 11712
Client/Station: GASBACS/GOODWIN	Traces: ABCN
Drawn By: Beatrix Cacer	OWR: N/A
Office #: 956-303-2416	ESID: 100370947216204
Issued for:	Scale: 1:12
	Page 6 of 8



FINAL

WR:86460514
Easement #:N/A

Reference Location
Latitude:
Longitude:



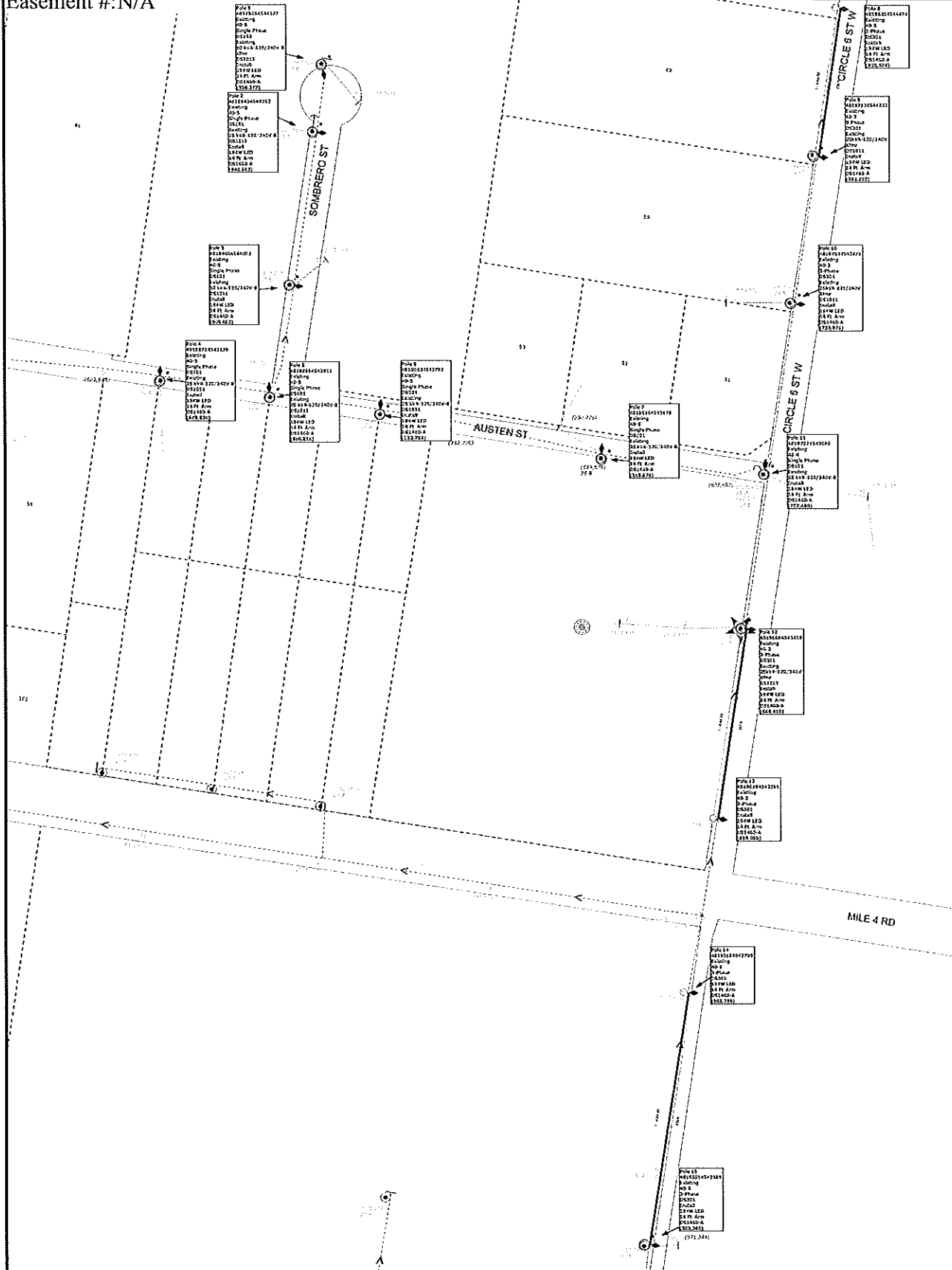
COLOR CODE LEGEND
 RED -New Facilities
 GREEN -Existing/Transfer Facilities
 BLUE -Facilities to Be Removed

Job Description: CUSTOMER SERVICE-CI-NEW SERVICE		WR: 86460514	
Customer: Adrian Perez		WG:	
Location: 175 Hidalgo County Urban Program		Date Completed:	
District: 175 - Mission		City: HIDALGO	
Circuit / Station:		Project ID:	
Drawn By: Betsy Conte	Tree Trimming: -----	Crew: HQ: 11712	
Office #: -----	Accessible: -----	Phases: A1C N	
Issued for:		GWR: N/A	
<h1>Preliminary</h1>		FSID: N/A	
		Scale: 1:120	
REV: N/A		Page 7 of 8	



WR:86460514
Easement #:N/A

Reference POLE 14
Latitude: 26.2966
Longitude: -98.4530



COLOR CODE LEGEND

- RED -New Facilities
- GREEN -Existing/Transfer Facilities
- BLUE -Facilities to Be Removed

Job Description: CUSTOMER SERVICE-CI-NEW SERVICE		WR: 86460514
Customer: Adrian Perez		WO:
Location: 175 Hidalgo County Urban Program		Date Completed: 01.02.2024
District: 175 - Mission		Man Hours: 306.95
City: PENTAS		Project ID: 100039
Circuit / Station: 945B4625 GOODWIN		Crew HQ: 11712
Drawn By: Beatrix Carter		NV: 12.47KV
Office #: 956-283-2416		Phases: ABCN
Tree Trimming: NO		OWR: N/A
Accessible: YES		ESID: N/A
Issued for:		Scale: 1:153

FINAL



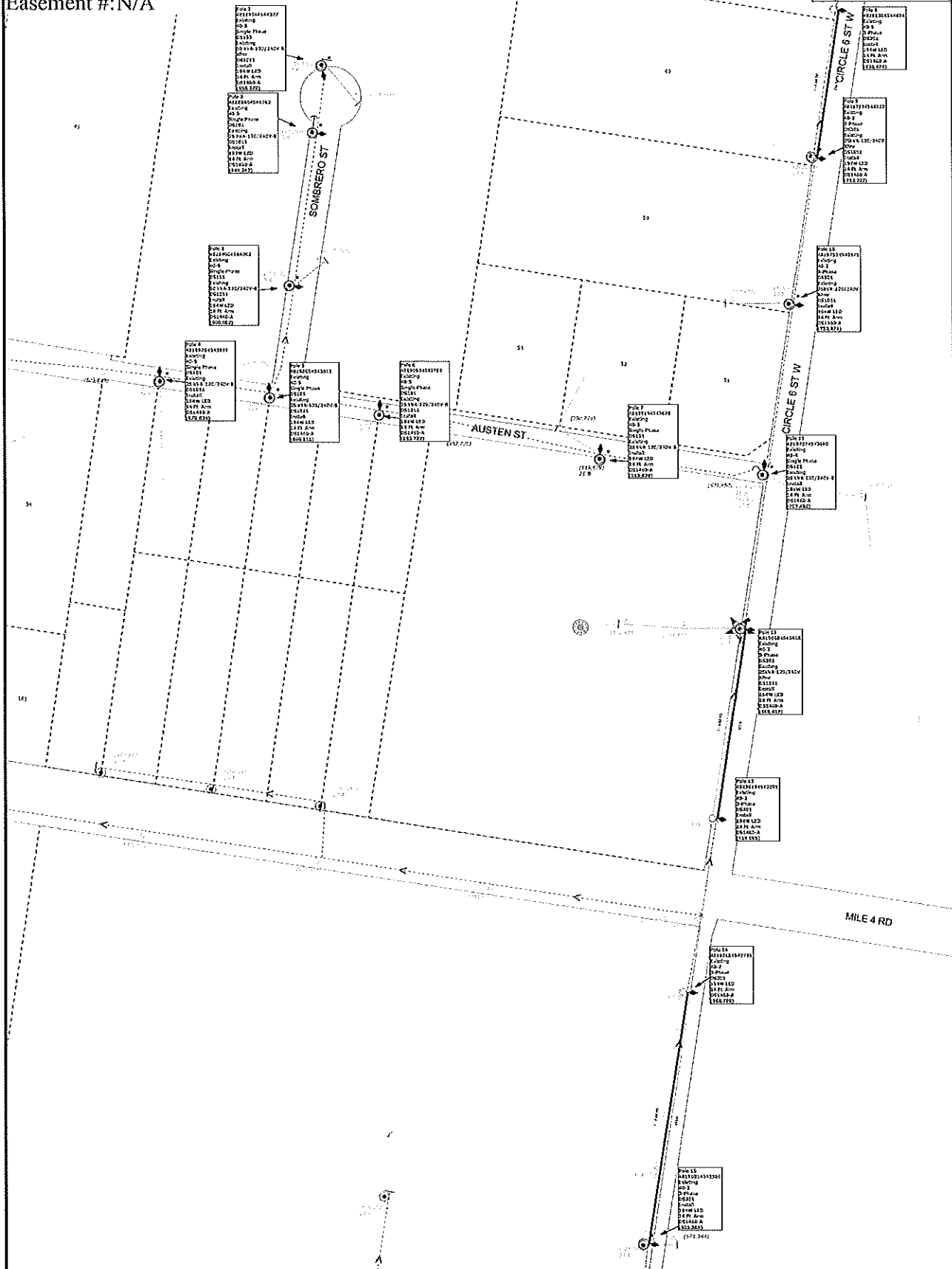
WR:86460514

Easement #:N/A

Reference POLE 14

Latitude: 26.2966

Longitude: -98.4530



COLOR CODE LEGEND
 RED -New Facilities
 GREEN -Existing/Transfer Facilities
 BLUE -Facilities to Be Removed

Job Description: CUSTOMER SERVICE-CI-NEW SERVICE		WR: 86460514
Customer: Adina Perez		WO:
Location: 175 Hidalgo County Urban Program		Date Completed: 01/02/2024
District: 175 - Mission		City: PENITAS
City: PENITAS		County: HIDALGO
Circuit / Station: 945B4623 GOODWIN		Phase: ABC N
N V: 12.47KV		OWR: N/A
Drawn By: Beatriz Cortez		Tree Trimming: NO
Office #: 956-283-2416		Accessible: YES
ESID: N/A		Scale: 1:153
Issued for:		Page 8 of 8

REV. N/A

FINAL