

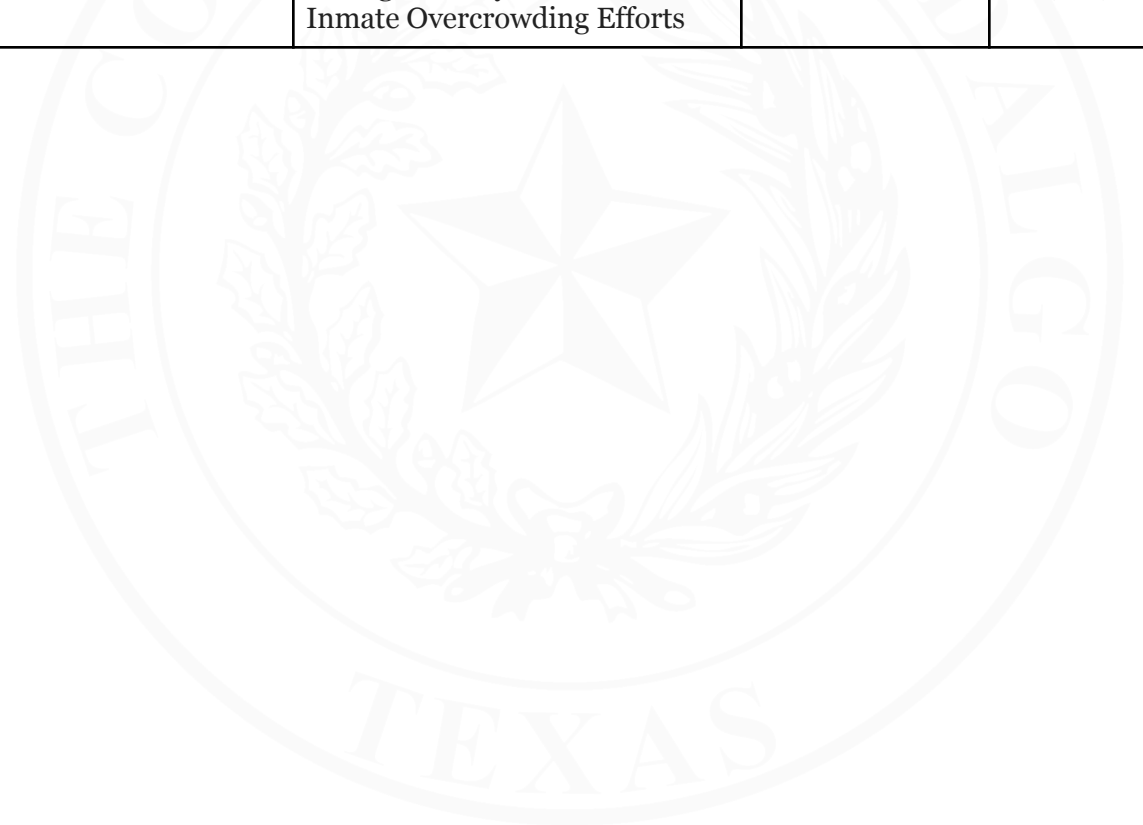


**Hidalgo County • Department of Budget & Management**  
American Rescue Plan Act

---

**Exhibit A - Budget Amendments**

#	ARPA Project No.	ARPA Project Name	Prior Budget	New Budget
1	21-121-037	Hidalgo County Precinct 1 Hike and Bike Trail	\$4,000,000.00	\$4,725,000.00
2	24-121-358	Hidalgo County Precinct 1 Wellness, Activity, and Community Center	\$6,562,485.00	\$6,887,485.00
3	21-280-061	Hidalgo County Prevention of Inmate Overcrowding Efforts	\$26,000,000.00	\$31,150,383.53





## **Project Description**

**Project Name:**

Hidalgo County Precinct 1 Hike & Bike Trail Project

**Project Number:**

ARPA-21-121-037

**Program Name:**

The Hidalgo County Precinct 1 Hike & Bike Trail Project will be part of the Hidalgo County American Rescue Plan Act Recreational Development Program.

**Department Name:**

Hidalgo County Precinct 1

**ARPA Expenditure Category:**

2: Negative Economic Impacts

**ARPA Eligibility Category:**

2.22: Strong Healthy Communities: Neighborhood Features that Promote Health and Safety<sup>^</sup>

**Project Description:**

Hidalgo County Precinct 1 is planning on developing a Hike & Bike Trail in their Mid-Valley area that will pass by the Cities of Mercedes, Weslaco, Donna, Alamo, and Pharr. The Precinct 1 Hike & Bike Trail is designed to build stronger neighborhoods and communities and address health disparities and the social determinants of health.

Treasury's Coronavirus State and Local Fiscal Recovery Funds (CSLFRF) Interim Final Rule recognizes parks, hike & bike trails and other recreational spaces as methods of creating stronger communities, addressing social determinants of health and confronting public health disparities.

**Need Assessment:**

The purpose of the Hidalgo County Precinct 1 Hike & Bike Trail is congruent with the overall objective of the Hidalgo County American Rescue Plan Act Recreational Development Program, which is to improve the accessibility and function of recreational spaces to constituents living in, near and around Qualified Census Tract areas.

By creating access to more recreational space together with park amenities including but not limited to lighting, park benches, and exercise equipment, the hike and bike trails are intended to provide outdoor recreational spaces that will be responsive to the needs of disproportionately impacted communities by promoting healthier living environments and socialization which



## Hidalgo County • Department of Budget & Management

American Rescue Plan Act 2021

---

helps to mitigate the spread of COVID-19 throughout and beyond the ongoing public health emergency.

**Fiscal Impact:** \$4,725,000.00

Trail - \$4,179,346.43

Personnel - \$545,653.57

### Proposed Hike and Bike Trail Map



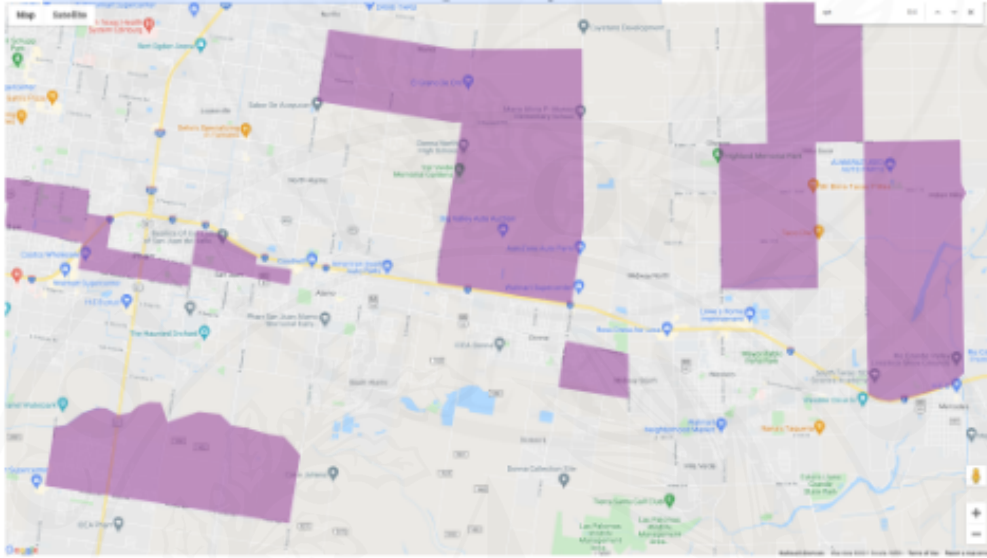


## Hidalgo County • Department of Budget & Management American Rescue Plan Act 2021

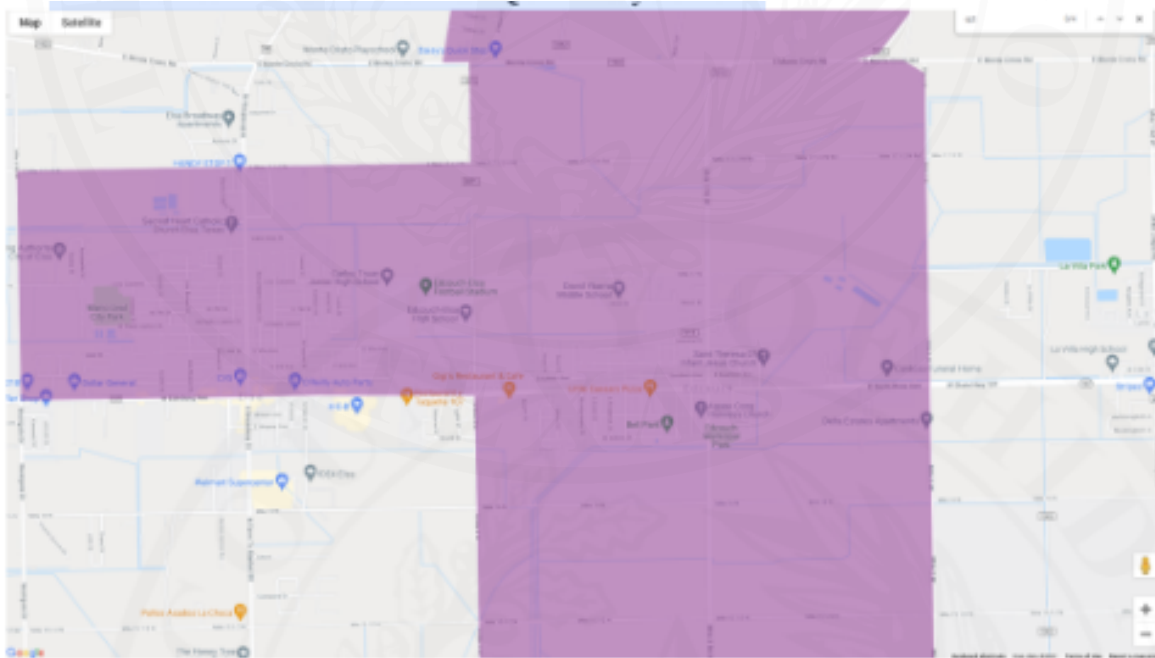
---

### ^QCT Preliminary Analysis

- Precinct 1 Hike & Bike Trail QCT Analysis 2021



- Precinct 1 Hike & Bike Trail QCT Analysis 2022





## **Project Description**

**Project Name:**

Hidalgo County Precinct 1 Wellness, Activity, and Community Center (WACC)

**Project Number:**

ARPA-24-121-358

**Program Name:**

The Hidalgo County Precinct 1 Wellness, Activity, and Community Center (WACC) will be part of the Hidalgo County American Rescue Plan Act Recreational Development Program.

**Department Name:**

Hidalgo County Precinct 1

**ARPA Expenditure Category:**

2: Negative Economic Impacts

**ARPA Eligibility Category:**

2.22: Strong Healthy Communities: Neighborhood Features that Promote Health and Safety^

**Project Description:**

The COVID-19 Pandemic has not only affected the populations worldwide due to the morbidity and mortality associated with COVID-19 but it has also acted as a physical, mental, and social contagion. Hidalgo County Precinct 1 residents, too, are faced with the same challenges as these disruptions have yet to be alleviated. The development of the Wellness, Activity, and Community Center (WACC), located at 1901 N. Bridge Ave., Weslaco, TX 78599 will aid in providing a safe space for all residents to actively participate in their health journey. This facility will be strategically located in a low to moderate income area. The recreation center will also provide learning, growing and developmental opportunities for residents to equip them with the proper instruments and support long-term health goals while fostering community engagement and cohesion. In addition, the center will offer a diverse range of programming tailored to individuals of all ages and abilities, including fitness classes, recreational activities, wellness workshops, and social events in collaboration with partners that include but are not limited to the Hidalgo County Health and Human Services, City of Weslaco, Hidalgo County Juvenile Justice Center and Weslaco ISD in response to the negative impacts of COVID-19. Personnel costs will also be included to ensure center implementation and operation.

Treasury included as an enumerated eligible use in disproportionately impacted communities projects to develop neighborhood features that promote improved health and safety outcomes, such as parks, green spaces, recreational facilities, sidewalks, pedestrian safety features like crosswalks, projects that increase access to healthy foods, streetlights, neighborhood cleanup,



## Hidalgo County • Department of Budget & Management

### American Rescue Plan Act 2021

---

and other projects to revitalize public spaces.<sup>1</sup> In the final rule, to further decrease administrative burden and enhance recipient flexibility, Treasury is allowing recipients to also presume that low-income households were disproportionately impacted. Treasury anticipates that adding low-income households as a presumed eligible population will maintain targeting of funds to populations and communities most likely to have experienced severe pandemic impacts, while providing a more flexible approach for recipients.<sup>2</sup>

**Fiscal Impact:** \$6,887,485.00

Facility: \$6,387,485.00

Personnel: \$500,000.00

^Low to Moderate-Income Area Data for Proposed Location: 1901 N. Bridge Ave., Weslaco, TX 78599

#### LMISD by Place: Weslaco city

---

GEOID	4877272
NAME	Weslaco city
PLACE_TYPE	Incorporated City/Town
STATE	48
STUSAB	TX
LOW	12,260.00
LOWMOD	19,620.00
LMMI	26,485.00
LOWMODUNIV	37,965.00
LOWMOD_PCT	51.68
UCLOWMOD	
UCLOWMOD_P	0.00

Source: HUD Exchange Low and Moderate Income Survey Data (LMISD) Map Application (<https://hud.maps.arcgis.com/apps/webappviewer/index.html?id=ffd0597e8af24f88b501b7e7f326bedd>)

---

<sup>1</sup> Department of the Treasury. (2022). Coronavirus State and Local Fiscal Recovery Funds. Federal Register, 87(18), p. 4373

<sup>2</sup> Department of the Treasury. (2022). Coronavirus State and Local Fiscal Recovery Funds. Federal Register, 87(18), p. 4441



## Hidalgo County • Department of Budget & Management

American Rescue Plan Act 2021

---

### Project Description

**Project Name:**

Hidalgo County Prevention of Inmate Overcrowding Efforts

**Project Number:**

ARPA-21-280-061

**Department Name:**

Sheriff

**ARPA Expenditure Category:**

1: Public Health

**ARPA Eligibility Category:**

1.4: Prevention in Congregate Settings (Nursing Homes, Prisons/Jails, Dense Work Sites, Schools, etc.)\* ^

**Project Description:**

The Hidalgo County Prevention Inmate Overcrowding Efforts project serves to address and offer alternative solutions to the COVID-19 public health emergency in correctional facilities. The overcrowding of the Hidalgo County jail is in part due to the extensive backlog of criminal jury trials and court cases that has developed and persists as a result of the ongoing COVID-19 public health emergency. Although mitigation measures have been implemented, overcrowding persists. Therefore, the County of Hidalgo will utilize leasing as an alternative method to avoid and improve congregate settings in correctional facilities by transferring/ relocating inmates to other facilities to mitigate the spread of COVID-19 and its new variants.

Recognizing the broad range of services and programming needed to contain COVID–19, the interim final rule provided an extensive list of enumerated eligible uses to prevent and mitigate COVID–19 and made clear that the public health response to the virus is expected to continue to evolve over time, necessitating different uses of funds. An enumerated eligible use of funds is support for prevention, mitigation, or other services in congregate living facilities (e.g., nursing homes, incarceration settings, homeless shelters, group living facilities) and other key settings like schools.<sup>1</sup> In the final rule, Treasury is maintaining an expansive list of enumerated eligible uses to mitigate and prevent COVID–19, given the wide-ranging activities that governments may take to further these goals, including “other public health responses.”<sup>2</sup>

---

<sup>1</sup> Department of the Treasury (n.d.) Federal Register, Coronavirus State and Local Fiscal Recovery Funds (p. 4352)

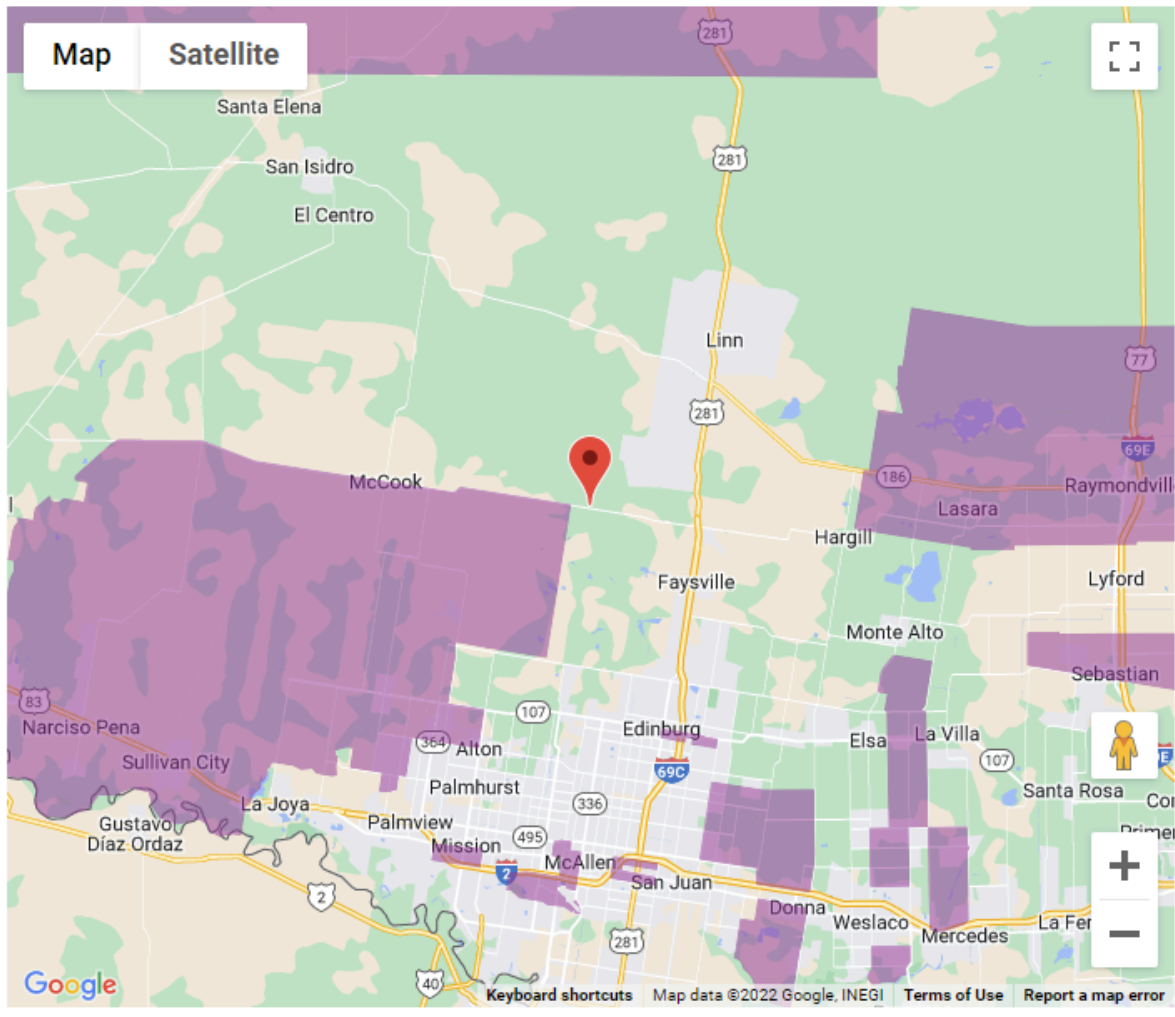
<sup>2</sup> Department of the Treasury (n.d.) Federal Register, Coronavirus State and Local Fiscal Recovery Funds (p. 4353)

**Fiscal Impact:** \$31,150,383.53

\*Evidence-Based

<https://www.ohchr.org/en/special-procedures/sr-truth-justice-reparation-and-non-recurrence/information-note-covid-19-prison-overcrowding-and-serving-sentences-serious-human-rights-violations>

^Below is the Qualified Census Tract Analysis for Hidalgo County.



Source: Office of Policy Development and Research 2021 and 2022 Small Difficult Development Areas (DDAs) and Qualified Census Tracts (QCTs)