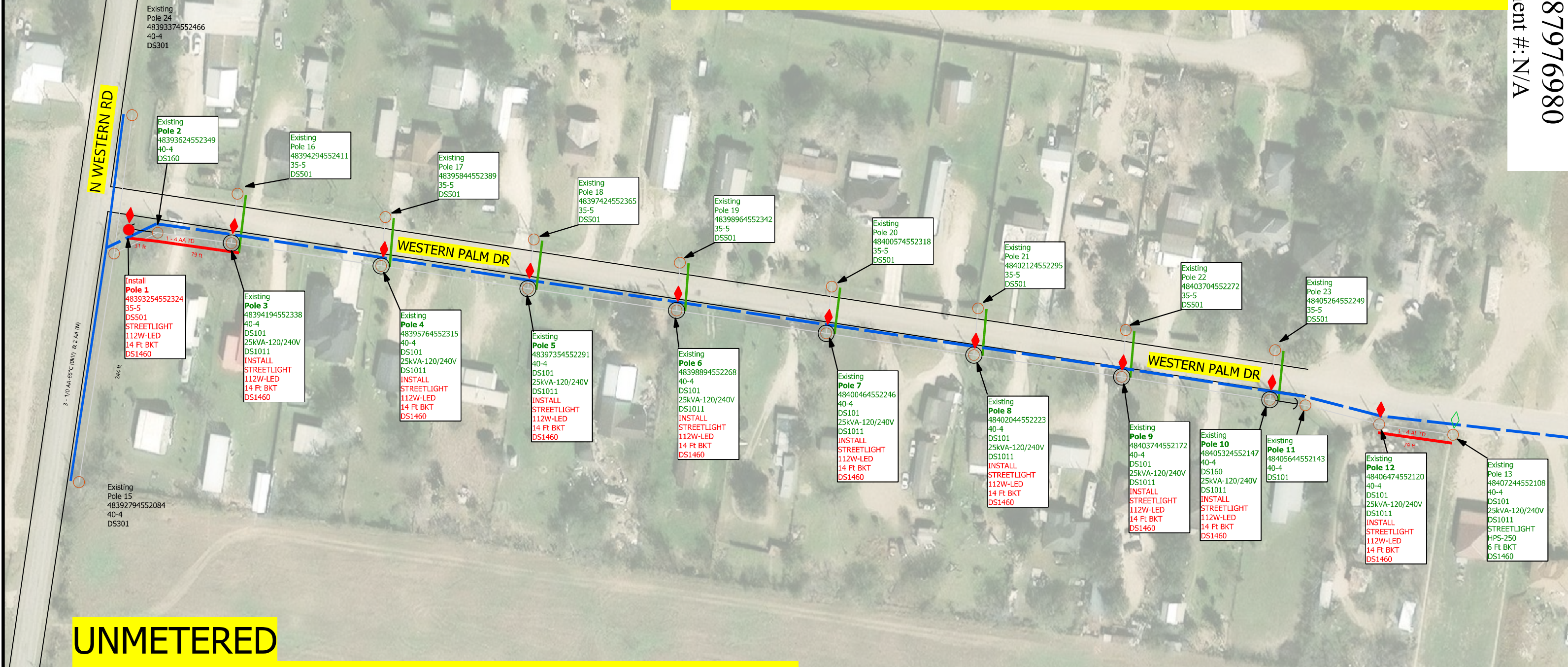


Reference POLE 2
 Latitude: 26.3227
 Longitude: -98.3924

WESTERN PALMS SUBDIVISION

WR: 87976980
 Easement #: N/A



**UNMETERED
 ADDING 10 NEW 122W-LEDs STREETLIGHTS
 ESID# 10032789416301623**

Note to Crew:
 -Update each pole ID tag with correct 14 digit GPS location number marked in **RED** which matches the XY coordinates obtained by GPS. **Blue** numbers refer to previous location ID
 - 10 NEW STREETLIGHTS-CUSTOMER MARTIN MARTINEZ 956-292-7025 EXT 5411
 - INSTALL 1 SECONDARY POLE AND 10 STREETLIGHTS CIAC:\$973.43

COLOR CODE LEGEND
 RED -New Facilities
 GREEN -Existing/Transfer Facilities
 BLUE -Facilities to Be Removed

Job Description: CUSTOMER SERVICE-CI-NEW SERVICE		WR: 87976980	
Customer: Martin Martinez		WO: 360415	
Location: 175 7336 WESTERN PALM DR		Date Completed: 8/8/24	Man Hours: 12.49
District: 175 - Mission		County: HIDALGO	Project ID: 100039
City: MISSION		Crew HQ: 11712	
Circuit / Station: 94SB3470/CITRUS CITY		N V: 12.47KV	Phases: B N
Drawn By: Cyven Hernandez		Tree Trimming: NO	OWR: N/A
Office #: (956)283-2324 Cell:(956)673-7761		Accessible: YES	ESID: 10032789416301623
Issued for:		Scale: 1:100	
FINAL		Rev: N/A	Page 1 of 1

