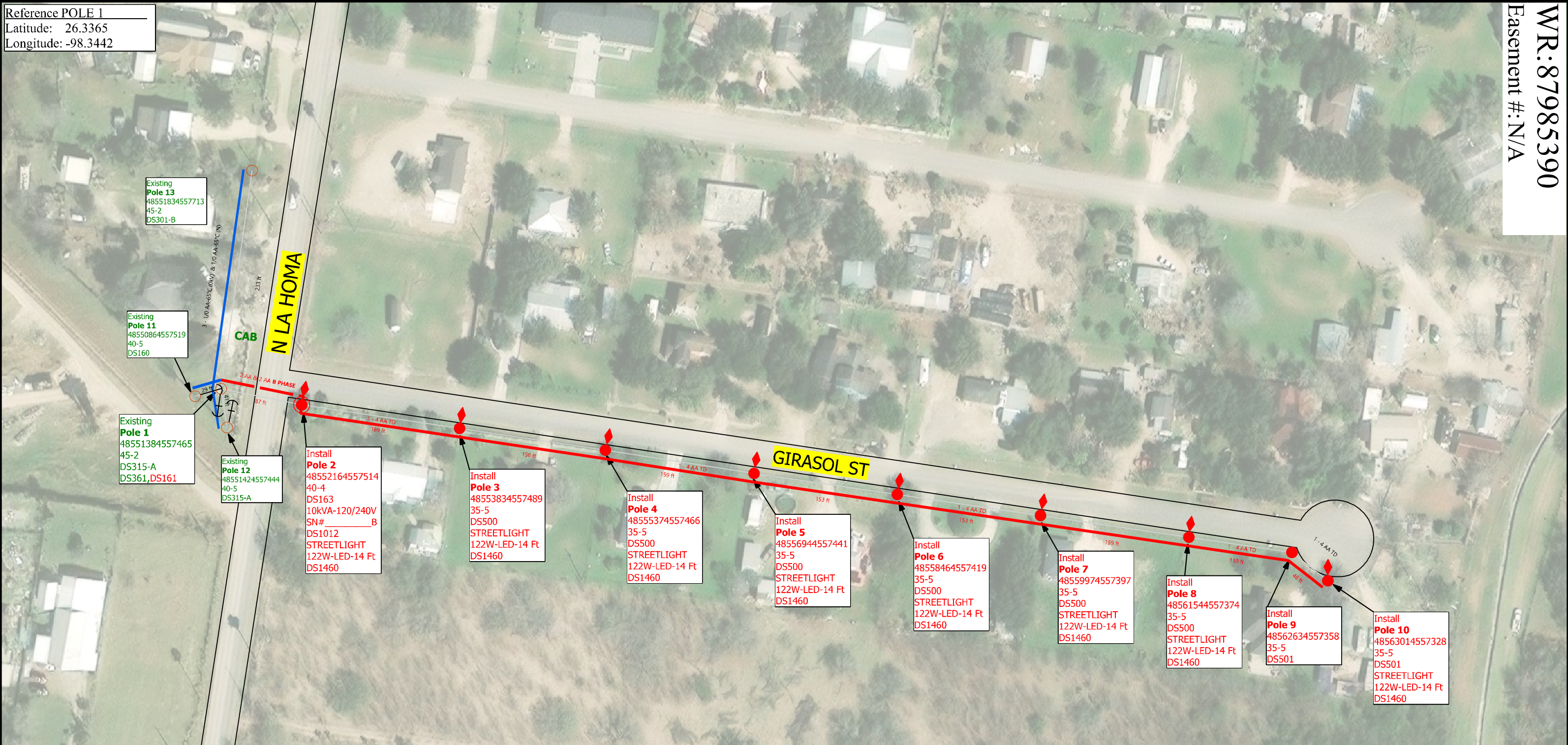


Reference POLE 1
Latitude: 26.3365
Longitude: -98.3442



UNMETERED
8 NEW 112W-LED STREETLIGHTS
ESID# 10032789418782993

Note to Crew:
-Update each pole ID tag with correct 14 digit GPS location number marked in **RED** which matches the XY coordinates obtained by GPS. **Blue** numbers refer to previous location ID
- 8 NEW STREETLIGHTS-MARTIN MARTINEZ 956-292-7025 EXT 5411
- INSTALL 8 NEW STREETLIGHTS, INSTALL 1 - PH PRIMARY POLE WITH TRANSFORMER AND 8 SECONDARY POLE **CIAC:\$10,975.68**

COLOR CODE LEGEND
RED -New Facilities
GREEN -Existing/Transfer Facilities
BLUE -Facilities to Be Removed

Job Description: 8 NEW STREETLIGHT FOR 3 DIAMOND SUBDIVISION ON GIRASOL ST		WR: 87985390
Customer: MARTIN MARTINEZ		WO: 360542
Location: 175 2802 GIRASOL ST		Man Hours: 35.88
District: 175 - Mission	City: MISSION	Project ID: TXLEDTCC1
Circuit / Station: 94SB3960/MOORE FIELD	N V: 12.47KV	Crew HQ: 11712
Phases: ABC N	Tree Trimming: BY CUSTOMER	OWR: N/A
Office #: (956)283-2324 Cell:(956)673-7761	Accessible: YES	ESID: 10032789418782993
Issued for:	FINAL	Scale: 1:100
	Rev: N/A	Page 1 of 1

