

Pfizer Inc. (PFE)

NYSE - Nasdaq Real Time Price. Currency in USD

☆ Follow

👥 Visitors trend 2W ↑ 10W ↑ 9M ↑

Quote Lookup



28.34 -0.27 (-0.94%)

At close: 03:59PM EDT

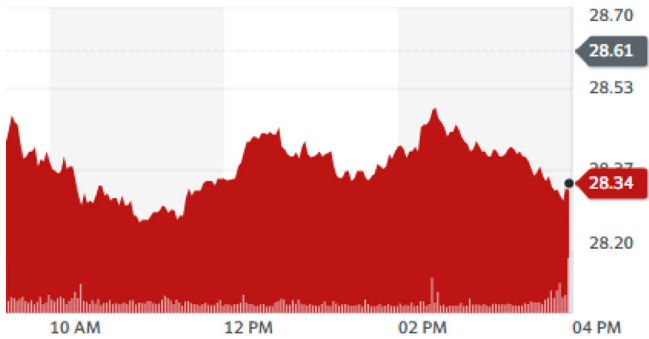
28.38 +0.04 (+0.14%)

After hours: 04:12PM EDT

- Summary
- Chart
- Conversations
- Statistics
- Historical Data
- Profile
- Financials
- Analysis
- Options
- Holders
- Sustainability

1D 5D 1M 6M YTD 1Y 5Y Max 📈

🗑 Full screen



Trade prices are not sourced from all markets

Previous Close	28.61	Market Cap	160.594B
Open	28.50	Beta (5Y Monthly)	0.62
Bid	28.34 x 4000	PE Ratio (TTM)	N/A
Ask	28.35 x 3200	EPS (TTM)	-0.46
Day's Range	28.26 - 28.51	Earnings Date	Oct 29, 2024
52 Week Range	25.20 - 33.92	Forward Dividend & Yield	1.68 (5.87%)
Volume	22,707,350	Ex-Dividend Date	Jul 26, 2024
Avg. Volume	31,543,619	1y Target Est	33.34

Holding PFE now?

Add your holdings to track your returns performance easily

Link Broker

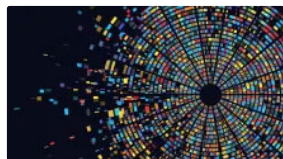
Add Manually

Advertisement

Advertisement

Advertisement

All | News | Press Releases | SEC Filings



Pharmaceutical Technology • 7 hours ago

Enara Bio secures \$32.5m for 'Dark Antigen' cancer therapies

Pfizer and Merck KGaA's venture capital arms were among the backers in the Series B round.

Ad • Weiss Ratings

NVIDIA's New Silent Partner Could be the Next Superstar

Nvidia is turning its attention to a new phase of the AI boom. And the world...

Insider Monkey • 10 hours ago

Pfizer Inc. (PFE): A Low-Cost Stock with High Growth Potential

We recently published a list of 7 Best Low Cost Stocks To Buy Under \$50. In this article, we are going to take a look at where Pfizer Inc. (NYSE:PFE) stands against other best low cost stocks t...