



**MARIA ELENA CORTEZ, M. ED.**

505 S MCCOLL RD, STE G  
EDINBURG, TX 78539

**DATE :**  
THURSDAY,  
JUNE 20, 2024

Dear Ms. Cortez,

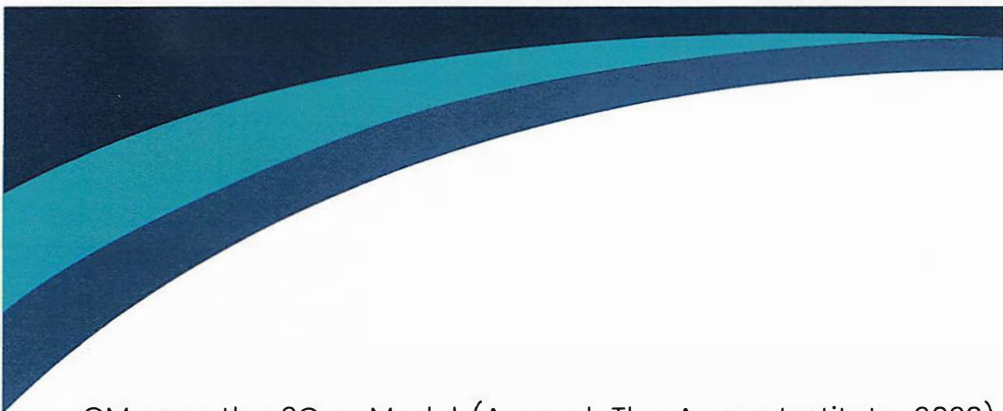
Please find the enclosed ARPA packet, as requested.

I would like to thank you for the opportunity to submit this letter to Hidalgo County, Precinct 2, requesting construction, maintenance and administration costs from the county's ARPA funds to support our non-profit, RGV Inclusive Project, Inc. dba Christian Manor ("CM").

We are currently asking for \$950,000 to buy 8 brand new units in McAllen, \$295,000 to buy land, and \$130,000 to cover maintenance and administration expenses for the next 12 months. Total request is \$1,375,000. If any of the properties do not appraise, we will cover the difference but we truly believe that the both properties will appraise.

Attached to this letter is the property survey along with a floor plan of the 8 units we are proposing at the property. From the money we currently have fundraised, CM will contribute to the project described above by covering any soft costs, FF&E, and development costs including a potential road that the city may require on the west side of the property we are looking to purchase.

Christian Manor ("CM") helps single parents and their children break the cycle of poverty by providing support services, resources and housing assistance.



CM uses the 2Gen Model (Ascend: The Aspen Institute, 2023) whole family approach that focuses equally and intentionally on services and opportunities for both parents and children. The Christian's Manor model uses 5 key components from the 2 Gen Model to obtain family success which include; Social Capital, Health and Mental Health, Economic Assets, K-12, Postsecondary & Employment Pathways & Housing

The Economic Assets component of the CM program includes housing. Christian's Manor has recently constructed 16 beautiful apartments in San Juan, Texas within a mile to a Boys and Girls Club, a community resource center and many local schools. Those people who qualify, may pay rent of no more than 30% of their gross income with a maximum rent of \$500 per family.

Of the 16 units, 6 units are occupied by families, including 10 children. All single parents are currently enrolled in post-secondary education at our local college or university and obtain mental health services by our contracted social worker.

**The overall goal is to assist single parents in a holistic manner to break the cycle of poverty two generations at a time.**

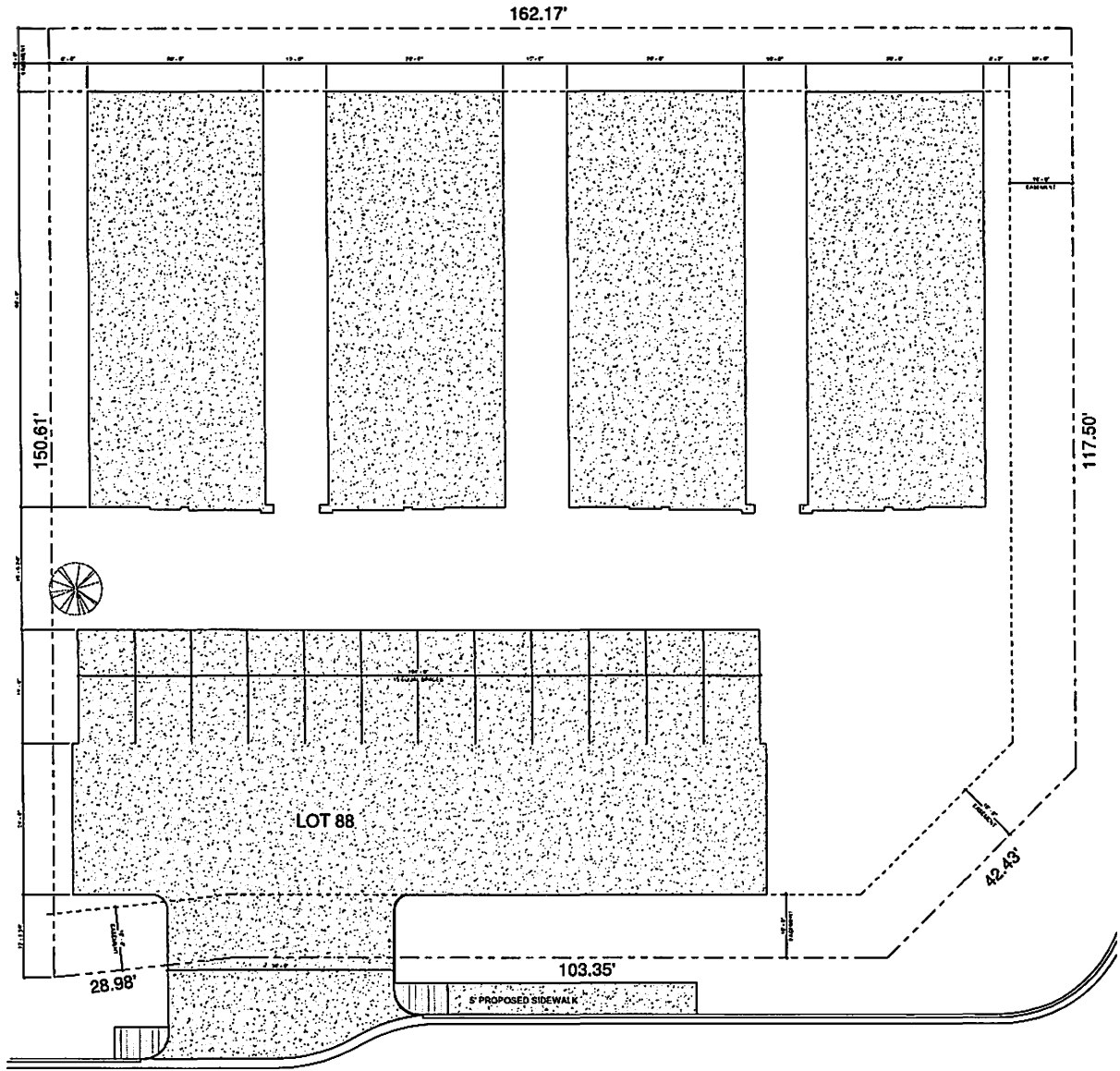
We appreciate your consideration. If you have any questions, please do not hesitate to call me at 956-802-3000.

Respectfully,



Felipe Cavazos  
Board President





162.17'

150.61'

117.50'

LOT 88

103.35'

28.98'

42.43'

5' PROPOSED SIDEWALK

LA VISTA AVE.

