

NasdaqGS - Nasdaq Real Time Price - USD

Charter Communications, Inc. (CHTR)

☆ Follow

+ Compare

327.30 +2.73 (+0.84%) 327.30 0.00 (0.00%)

At close: 4:00 PM EDT

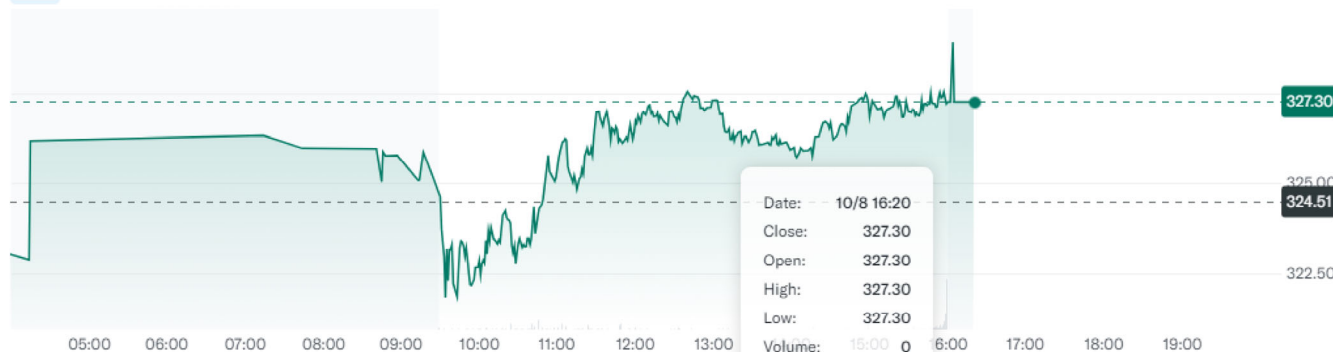
After hours: 4:20 PM EDT

1D 5D 3M 6M YTD 1Y 5Y All

Key Events

Mountain

Advanced Chart



Previous Close	324.57	Day's Range	321.88 - 327.72	Market Cap (intraday)	46.719B	Earnings Date	Nov 1, 2024
Open	324.28	52 Week Range	236.08 - 458.30	Beta (5Y Monthly)	1.05	Forward Dividend & Yield	--
Bid	327.20 x 100	Volume	698,793	PE Ratio (TTM)	10.45	Ex-Dividend Date	--
Ask	327.39 x 100	Avg. Volume	1,316,623	EPS (TTM)	31.32	1y Target Est	364.79

Charter Communications, Inc. Overview - Telecom Services / Communication Services

Quote Lookup



U.S. markets closed

US	Europe	Asia	Rates	Commodities
S&P 500 5,751.13 +55.19 (+0.97%)	Dow 30 42,080.37 +126.13 (+0.30%)	Nasdaq 18,182.92 +259.01 (+1.45%)	Russell 2000 2,194.98 +1.89 (+0.09%)	Crude Oil 73.90 -3.24 (-4.20%)
		Gold 2,640.60 -25.40 (-0.95%)		

MY PORTFOLIOS

Sign in to access your portfolio

Sign in

TOP GAINERS

DJTW Trump Media & Te...		14.85 +2.36 (+18.90%)
DJT Trump Media & Te...		21.80 +3.41 (+18.54%)
PTCT PTC Therapeutics...		40.77 +5.78 (+16.52%)
HOOD Robinhood Marke...		25.61 +2.29 (+9.82%)
SG Sweetgreen, Inc.		38.20 +3.35 (+9.81%)

- Summary
- News
- Research
- Chart
- Community
- Statistics
- Historical Data
- Profile
- Financials
- Analysis
- Options
- Holders
- Sustainability