

WR:88015378

Easement #:N/A

Note to Unmetered: Installing (21) new 122W LED Streetlights
ESID: 10032789420635151

Reference Pole 1
Latitude: 26.3301,
Longitude: -98.3821

Existing Pole 2
48429134555043
40-5
DS101
25 kVA - 120/240 V
DS1012
Install Streetlight
14 Ft Alum Upswept
122W LED 14000L
DS1460-A

Existing Pole 1
48427284555072
40-5
DS115
25 kVA - 120/240 V
DS1012
Install Streetlight
14 Ft Alum Upswept
122W LED 14000L
DS1460-A

Existing Pole 4
48431014555014
48430144555022
40-4
DS101
25 kVA - 120/240 V
DS1012
Install SEC Clevis
DS501

Install Pole 3
48431214555008
40-4
DS101
Install Streetlight
14 Ft Alum Upswept
122W LED 14000L
DS1460-A

Existing Pole 5
48432864554986
40-5
DS101
25 kVA - 120/240 V
DS1011
Install Streetlight
14 Ft Alum Upswept
LED 14000L
DS1460-A

Existing Pole 8
48428834554905
40-5
DS115
25 kVA - 120/240 V
DS1012
Install Streetlight
14 Ft Alum Upswept
122W LED 14000L
DS1460-A

Note to Crew:

- Update each pole ID tag with correct 14 digit GPS location number marked in RED which matches the XY coordinates obtained by GPS. Blue numbers refer to previous location ID
- New LED Lights, Cust: Hidalgo County, Martin Martinez 956-292-7025
- Install 1 in line PRI pole and (21) 122W LED Streetlights

Job Description: CUSTOMER SERVICE-CI-NEW SERVICE		WR: 88015378	
Customer: MARTIN MARTINEZ		WO: 362687	
Location: 175 6404 MISSION SPRINGS ST		Date Completed: 10/22/2024	Man Hours: 29.04
District: 175 - Mission		County: HIDALGO	Project ID: 100039
City: MISSION		Crew HQ: 11712	
Circuit / Station: 94SB6000 CITRUS CITY		N V: 12.47KV	Phases: ABC N
Drawn By: Blanca Garza		Tree Trimming: CUST	OWR: N/A
Office #: 956-586-8513		Accessible: YES	ESID: 10032789420635151
Issued for:		Scale: 1"=100'	

COLOR CODE LEGEND
RED -New Facilities
GREEN -Existing/Transfer Facilities
BLUE -Facilities to Be Removed

FINAL

Rev. N/A

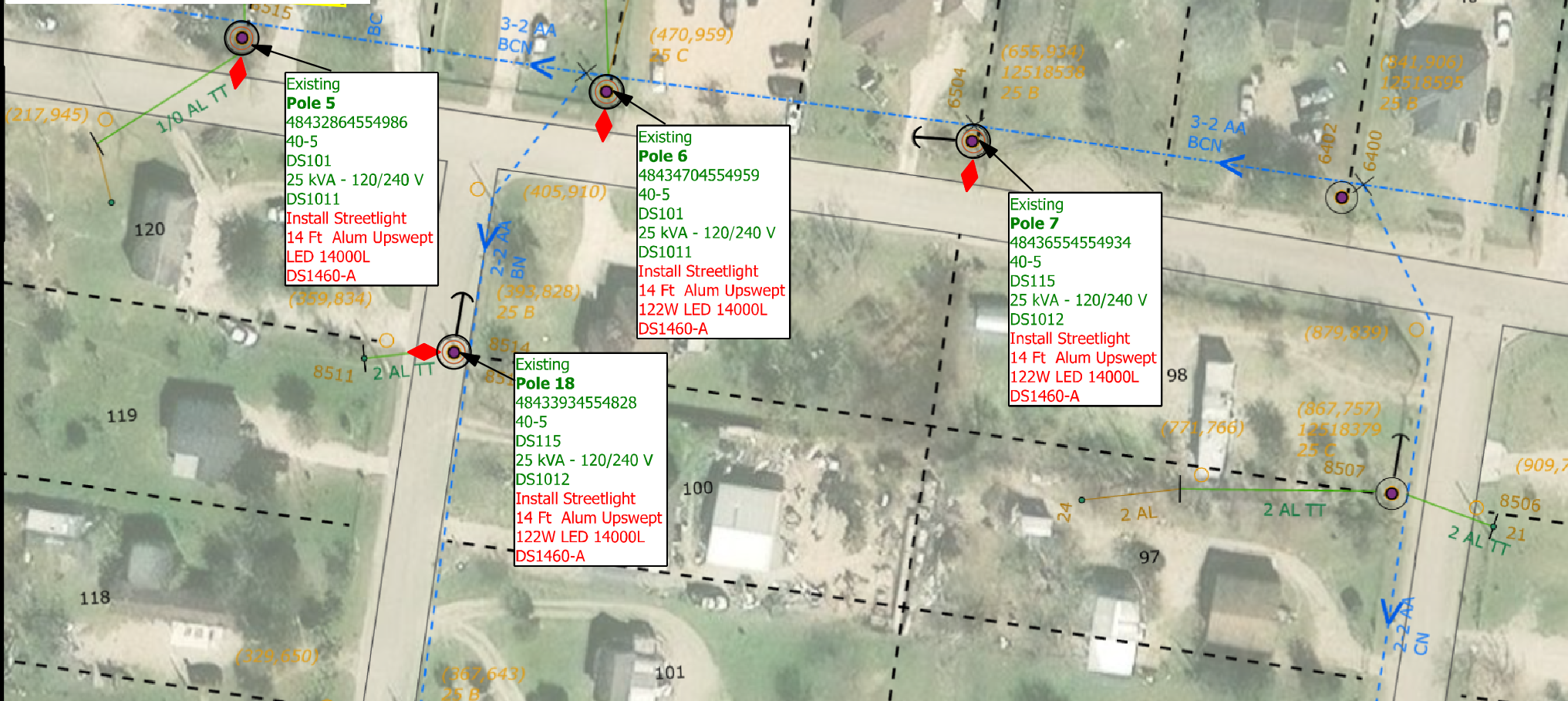
Page 1 of 4



WR:88015378

Easement #:N/A

Reference Pole 1
Latitude: 26.3301,
Longitude: -98.3821



Existing Pole 5
48432864554986
40-5
DS101
25 kVA - 120/240 V
DS1011
Install Streetlight
14 Ft Alum Upswept
LED 14000L
DS1460-A

Existing Pole 6
48434704554959
40-5
DS101
25 kVA - 120/240 V
DS1011
Install Streetlight
14 Ft Alum Upswept
122W LED 14000L
DS1460-A

Existing Pole 7
48436554554934
40-5
DS115
25 kVA - 120/240 V
DS1012
Install Streetlight
14 Ft Alum Upswept
122W LED 14000L
DS1460-A

Existing Pole 18
48433934554828
40-5
DS115
25 kVA - 120/240 V
DS1012
Install Streetlight
14 Ft Alum Upswept
122W LED 14000L
DS1460-A

Existing Pole 19
48433674554643
40-5
DS101

Note to Crew:
-Update each pole ID tag with correct 14 digit GPS location number marked in **RED** which matches the XY coordinates obtained by GPS. **Blue** numbers refer to previous location ID
- New LED Lights, Cust: Hidalgo County, Martin Martinez 956-292-7025
- Install 1 in line PRI pole and (21) 122W LED Streetlights



COLOR CODE LEGEND
RED -New Facilities
GREEN -Existing/Transfer Facilities
BLUE -Facilities to Be Removed

Job Description: CUSTOMER SERVICE-CI-NEW SERVICE		WR: 88015378	
Customer: MARTIN MARTINEZ		WO: 362687	
Location: 175 6404 MISSION SPRINGS ST		Date Completed: 10/22/2024	
District: 175 - Mission		County: HIDALGO	
City: MISSION		Man Hours: 29.04	
Circuit / Station: 94SB6000 CITRUS CITY		Project ID: 100039	
N V: 12.47KV		Crew HQ: 11712	
Phases: ABC N		Drawn By: Blanca Garza	
Tree Trimming: CUST		OWR: N/A	
Office #: 956-586-8513		Accessible: YES	
Issued for:		ESID: 10032789420635151	
FINAL		Scale: 1"=100'	
		Page 2 of 4	

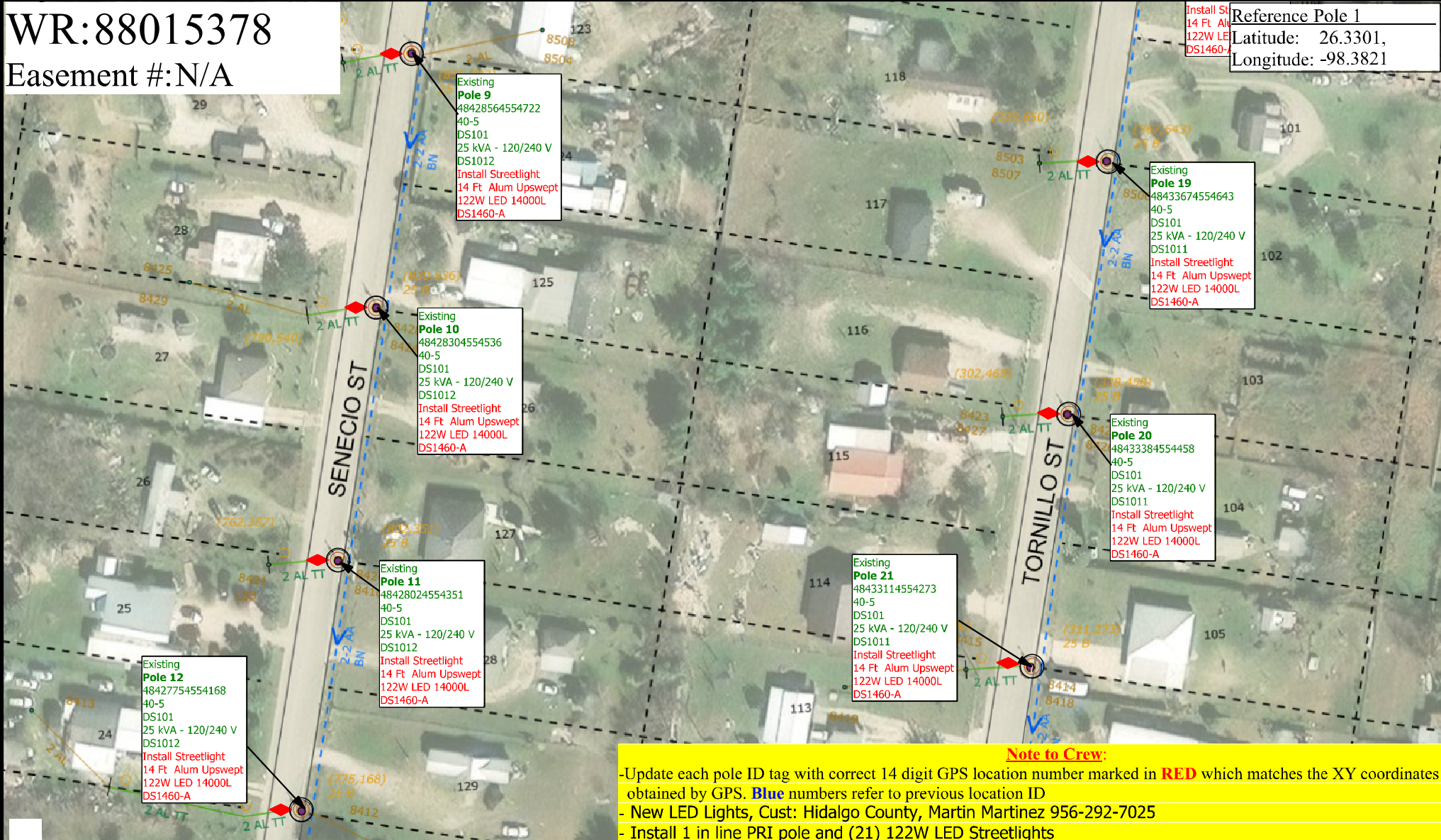


Rev. N/A

WR:88015378

Easement #:N/A

Reference Pole 1
 Latitude: 26.3301,
 Longitude: -98.3821



Note to Crew:
 -Update each pole ID tag with correct 14 digit GPS location number marked in **RED** which matches the XY coordinates obtained by GPS. **Blue** numbers refer to previous location ID
 - New LED Lights, Cust: Hidalgo County, Martin Martinez 956-292-7025
 - Install 1 in line PRI pole and (21) 122W LED Streetlights



COLOR CODE LEGEND
RED -New Facilities
GREEN -Existing/Transfer Facilities
BLUE -Facilities to Be Removed

Job Description: CUSTOMER SERVICE-CI-NEW SERVICE		WR: 88015378	
Customer: MARTIN MARTINEZ		WO: 362687	
Location: 175 6404 MISSION SPRINGS ST		Date Completed: 10/22/2024	Man Hours: 29.04
District: 175 - Mission		County: HIDALGO	Project ID: 100039
City: MISSION		Crew HQ: 11712	
Circuit / Station: 94SB6000 CITRUS CITY		N V: 12.47KV	Phases: ABC N
Drawn By: Blanca Garza		Tree Trimming: CUST	OWR: N/A
Office #: 956-586-8513		Accessible: YES	ESID: 10032789420635151
Issued for:		Scale: 1"=100'	Page 3 of 4

FINAL

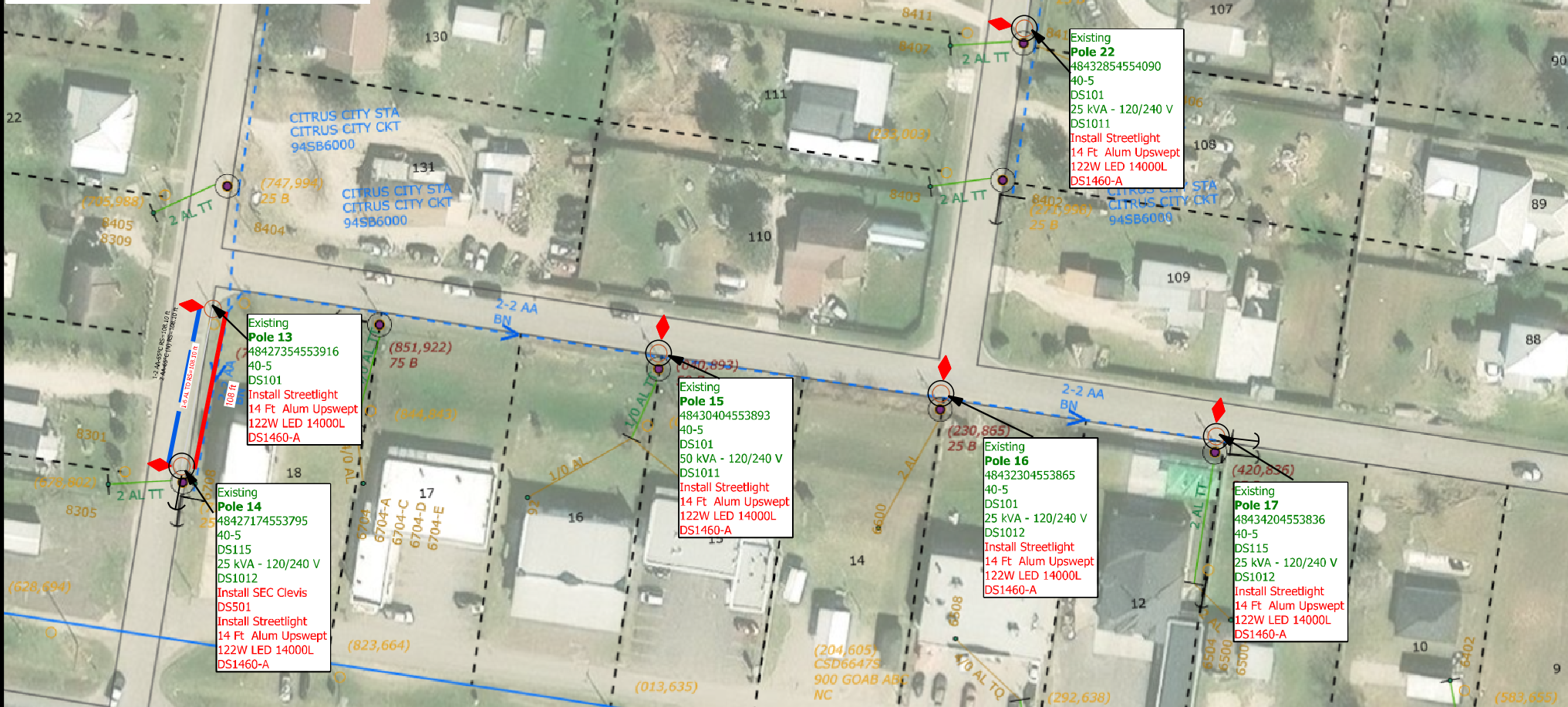
Rev. N/A



WR:88015378

Easement #:N/A

Reference Pole 1
Latitude: 26.3301,
Longitude: -98.3821



Existing Pole 13
48427354553916
40-5
DS101
Install Streetlight
14 Ft Alum Upswept
122W LED 14000L
DS1460-A

Existing Pole 14
48427174553795
40-5
DS115
25 kVA - 120/240 V
DS1012
Install SEC Clevis
DS501
Install Streetlight
14 Ft Alum Upswept
122W LED 14000L
DS1460-A

Existing Pole 15
48430404553893
40-5
DS101
50 kVA - 120/240 V
DS1011
Install Streetlight
14 Ft Alum Upswept
122W LED 14000L
DS1460-A

Existing Pole 16
48432304553865
40-5
DS101
25 kVA - 120/240 V
DS1012
Install Streetlight
14 Ft Alum Upswept
122W LED 14000L
DS1460-A

Existing Pole 17
48434204553836
40-5
DS115
25 kVA - 120/240 V
DS1012
Install Streetlight
14 Ft Alum Upswept
122W LED 14000L
DS1460-A

Note to Crew:

- Update each pole ID tag with correct 14 digit GPS location number marked in **RED** which matches the XY coordinates obtained by GPS. **Blue** numbers refer to previous location ID
- New LED Lights, Cust: Hidalgo County, Martin Martinez 956-292-7025
- Install 1 in line PRI pole and (21) 122W LED Streetlights



COLOR CODE LEGEND
RED -New Facilities
GREEN -Existing/Transfer Facilities
BLUE -Facilities to Be Removed

Job Description: CUSTOMER SERVICE-CI-NEW SERVICE		WR: 88015378	
Customer: MARTIN MARTINEZ		WO: 362687	
Location: 175 6404 MISSION SPRINGS ST		Date Completed: 10/22/2024	
District: 175 - Mission		County: HIDALGO	
City: MISSION		Man Hours: 29.04	
Circuit / Station: 94SB6000 CITRUS CITY		Project ID: 100039	
N V: 12.47KV		Crew HQ: 11712	
Phases: ABC N		Drawn By: Blanca Garza	
Tree Trimming: CUST		OWR: N/A	
Office #: 956-586-8513		Accessible: YES	
Issued for:		ESID: 10032789420635151	
<h1>FINAL</h1>		Scale: 1"=100'	
		Page 4 of 4	



Rev. N/A