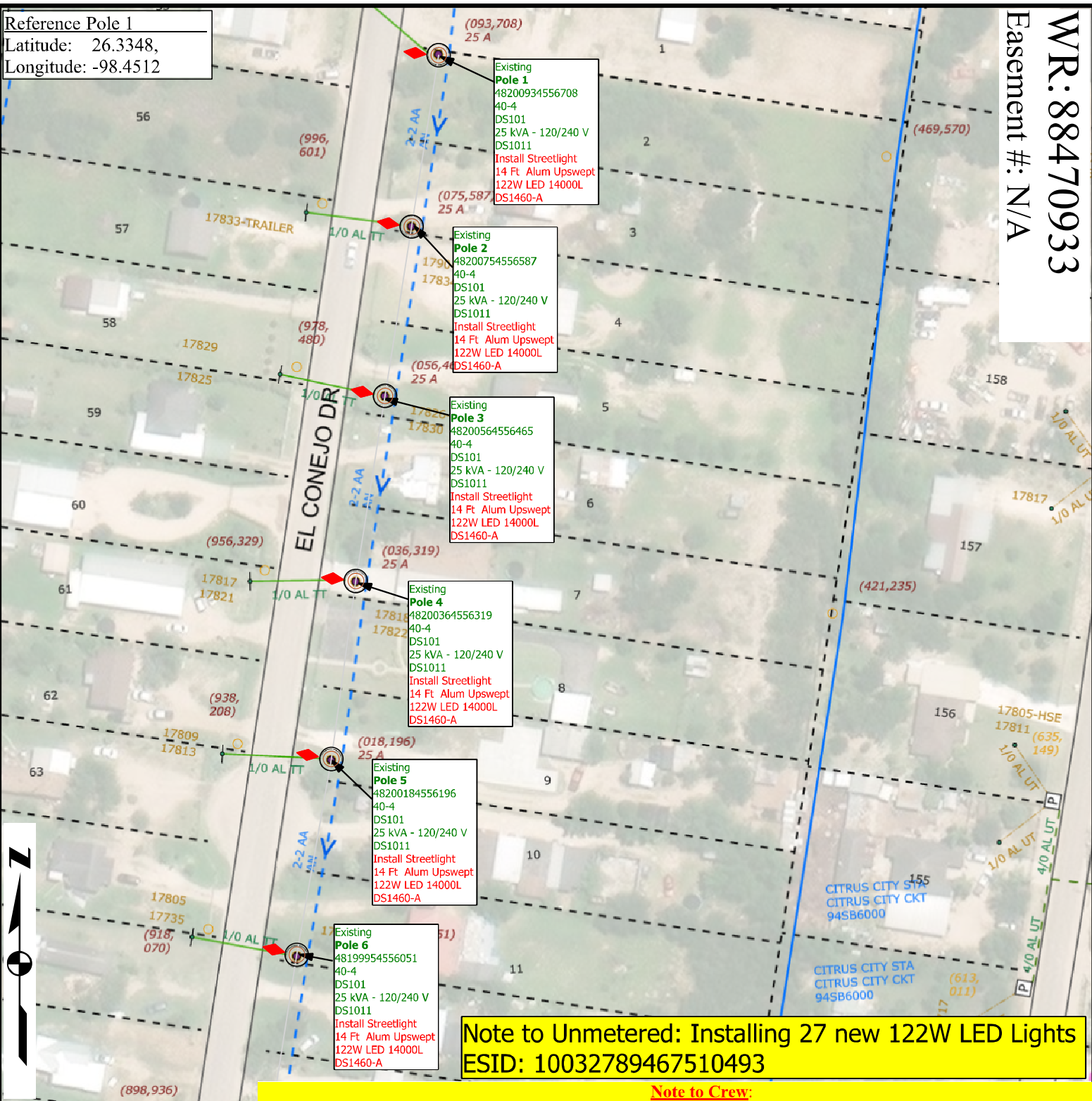


Reference Pole 1
 Latitude: 26.3348,
 Longitude: -98.4512



**Note to Unmetered: Installing 27 new 122W LED Lights
 ESID: 10032789467510493**

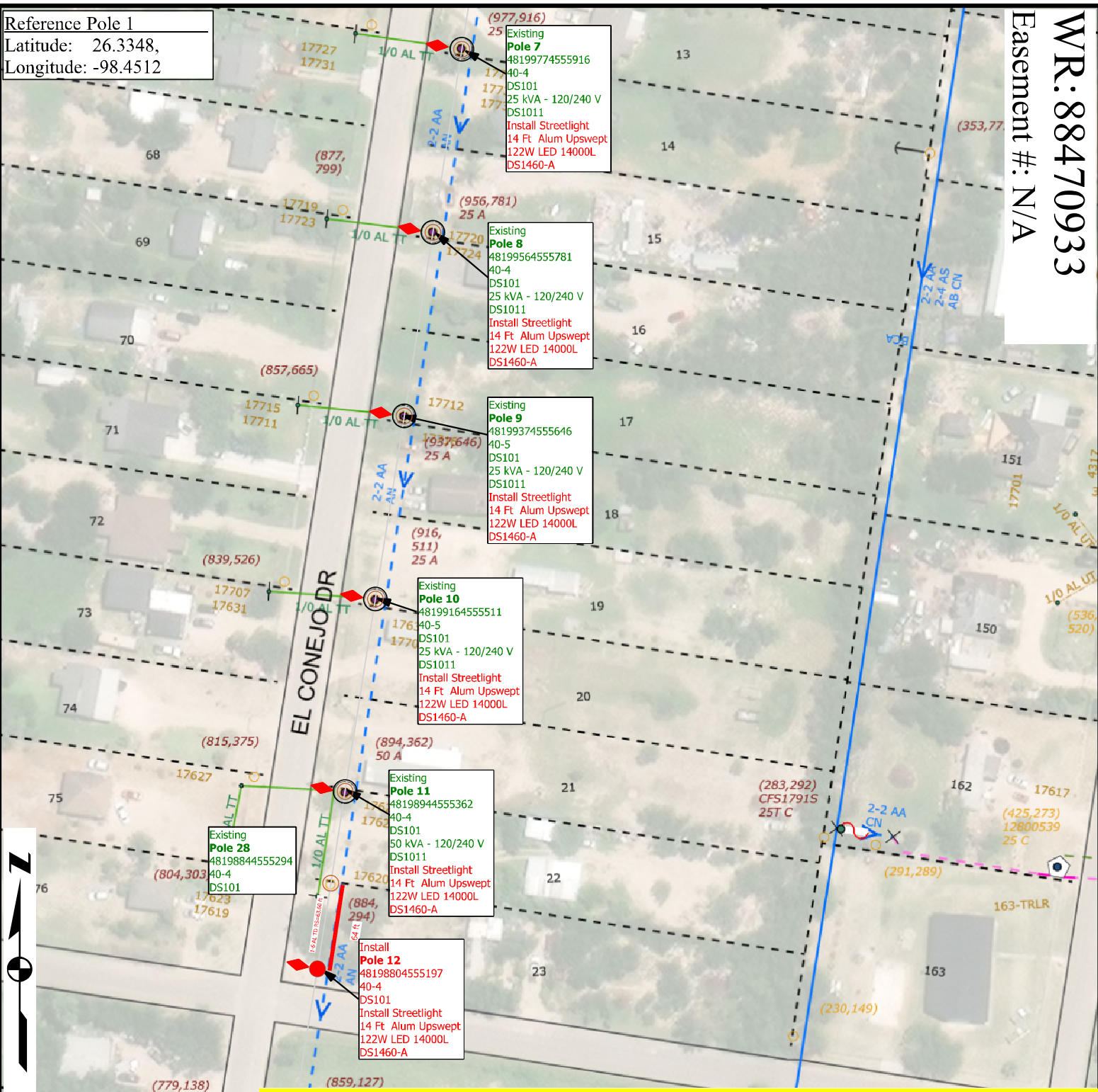
Note to Crew:

- RED** -New Facilities
 - GREEN** -Existing/Transfer Facilities
 - BLUE** -Facilities to Be Removed
- Update each pole ID tag with correct 14 digit GPS location number marked in **RED** which matches the XY coordinates obtained by GPS. **Blue** numbers refer to previous location ID
- New LED Lights, Cust: Hidalgo County, Martin Martinez 956-292-7025
- Install 1 in line PRI pole and run wire from existing OH XFMR. Install 27 new 122W LED lights.

Job Description: CUSTOMER SERVICE-CI-NEW SERVICE		WR: 88470933	
		WO: 362836	
Customer: MARTIN MARTINEZ	Date Completed: 10/25/2024	Man Hours: 35.44	
Location: 175 EL CONEJO DR	County: HIDALGO	Project ID: TXLEDTCC1	
District: 175 - Mission	City: MISSION	Crew HQ: 11712	
Circuit / Station: 94SB6000 CITRUS CITY	N V: 12.47KV	Phases: ABC N	
Drawn By: Blanca Garza	Trec Trimming: BY CUST.	OWR: N/A	
Office #: 956-586-8513	Accessible: YES	ESID: 10032789467510493	
Issued for:		Scale: 1:100	
FINAL		Page 1 of 5	



Reference Pole 1
 Latitude: 26.3348,
 Longitude: -98.4512



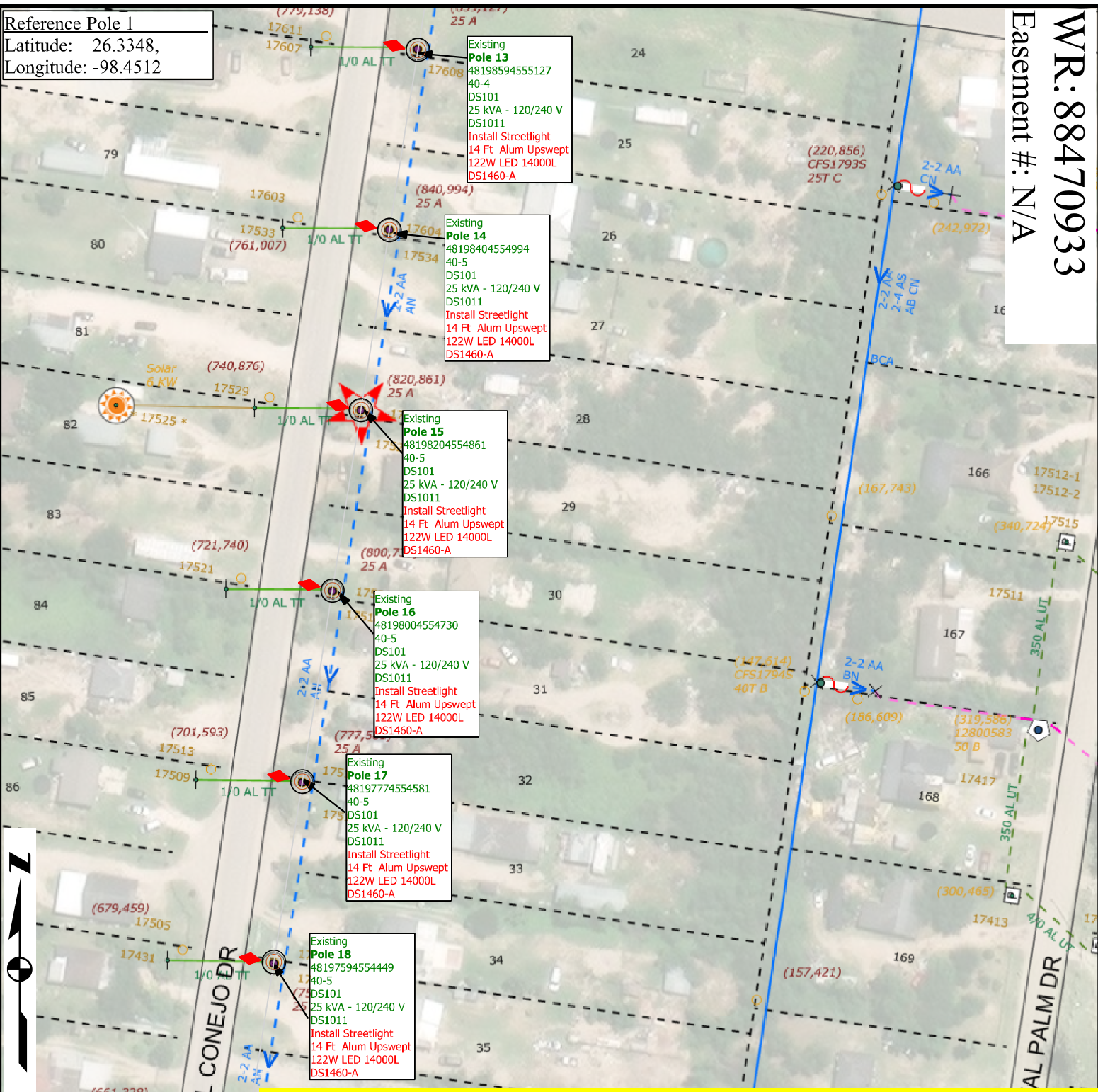
Note to Crew:
 -Update each pole ID tag with correct 14 digit GPS location number marked in **RED** which matches the XY coordinates obtained by GPS. **Blue** numbers refer to previous location ID
 - New LED Lights, Cust: Hidalgo County, Martin Martinez 956-292-7025
 - Install 1 in line PRI pole and run wire from existing OH XFMR. Install 27 new 122W LED lights.

COLOR CODE LEGEND
RED -New Facilities
GREEN -Existing/Transfer Facilities
BLUE -Facilities to Be Removed

Job Description: CUSTOMER SERVICE-CI-NEW SERVICE		WR: 88470933	
		WO: 362836	
Customer: MARTIN MARTINEZ		Date Completed: 10/25/2024	
Location: 175 EL CONEJO DR		County: HIDALGO	
District: 175 - Mission		City: MISSION	
Circuit / Station: 94SB6000 CITRUS CITY		N V: 12.47KV	
Drawn By: Blanca Garza		Trec Trimming: BY CUST.	
Office #: 956-586-8513		Accessible: YES	
Issued for:		Phases: ABC N	
FINAL		ESID: 10032789467510493	
		Scale: 1:100	
Rev. N/A		Page 2 of 5	



Reference Pole 1
 Latitude: 26.3348,
 Longitude: -98.4512



Note to Crew:

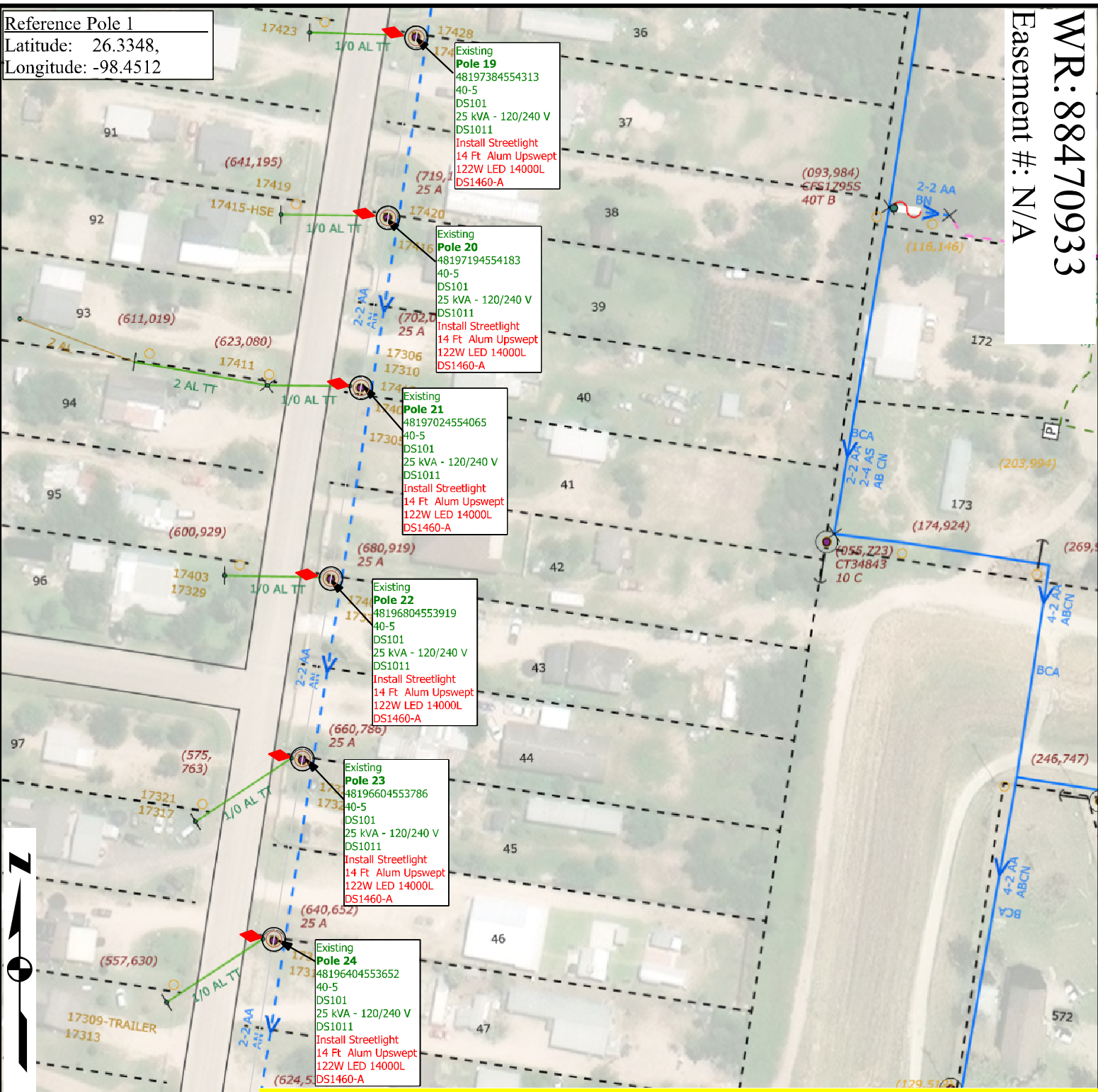
COLOR CODE LEGEND
 RED -New Facilities
 GREEN -Existing/Transfer Facilities
 BLUE -Facilities to Be Removed

-Update each pole ID tag with correct 14 digit GPS location number marked in **RED** which matches the XY coordinates obtained by GPS. **Blue** numbers refer to previous location ID
 - New LED Lights, Cust: Hidalgo County, Martin Martinez 956-292-7025
 - Install 1 in line PRI pole and run wire from existing OH XFMR. Install 27 new 122W LED lights.

Job Description: CUSTOMER SERVICE-CI-NEW SERVICE		WR: 88470933	
		WO: 362836	
Customer: MARTIN MARTINEZ		Date Completed: 10/25/2024	
Location: 175 EL CONEJO DR		County: HIDALGO	
District: 175 - Mission		City: MISSION	
Circuit / Station: 94SB6000 CITRUS CITY		N V: 12.47KV	
Drawn By: Blanca Garza		Trec Trimming: BY CUST.	
Office #: 956-586-8513		Accessible: YES	
Issued for:		Phases: ABC N	
<h1>FINAL</h1>		OWR: N/A	
		ESID: 10032789467510493	
		Scale: 1:100	
		Page 3 of 5	




Reference Pole 1
 Latitude: 26.3348,
 Longitude: -98.4512

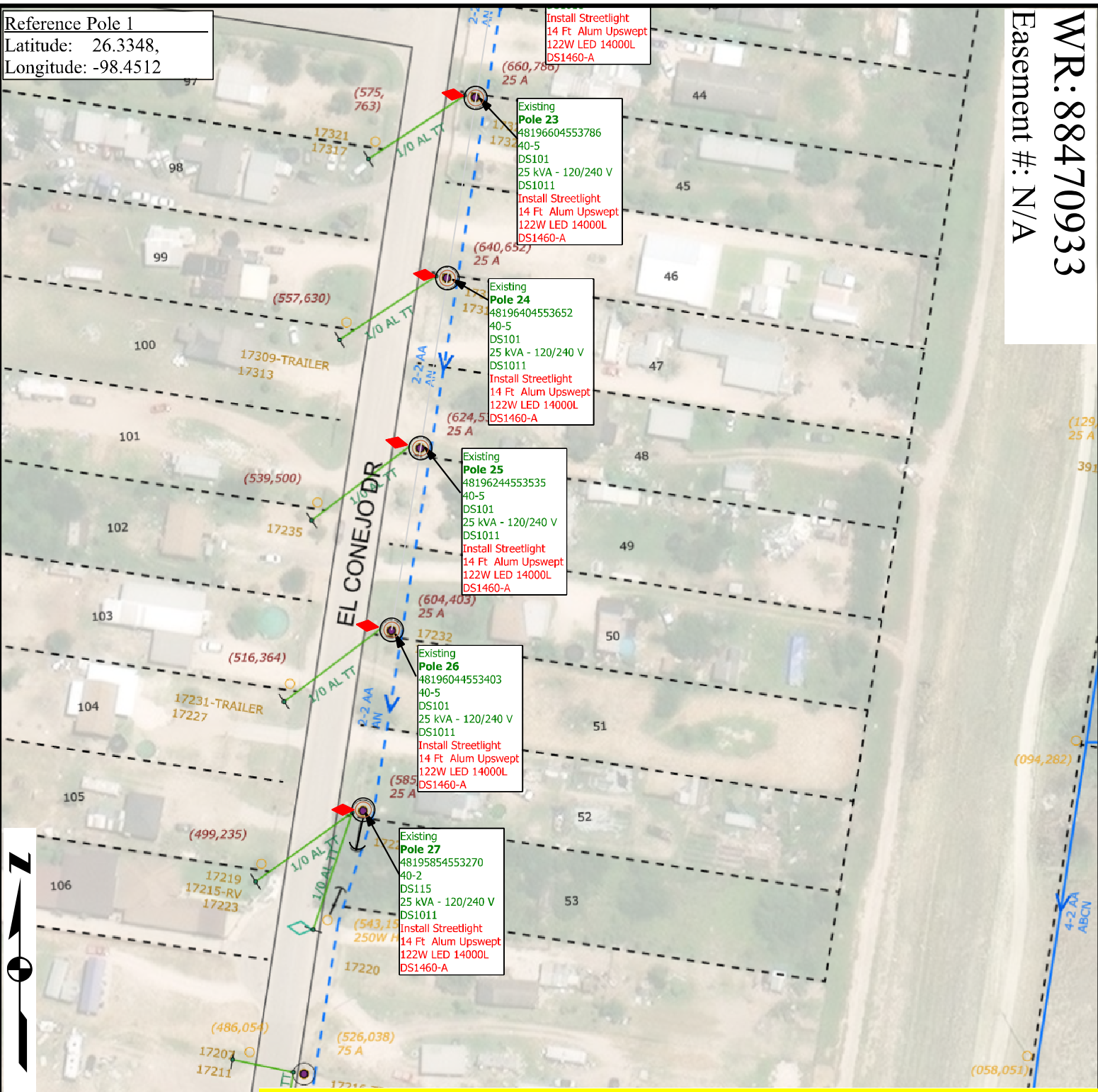


COLOR CODE LEGEND
 RED -New Facilities
 GREEN -Existing/Transfer Facilities
 BLUE -Facilities to Be Removed

Note to Crew:
 -Update each pole ID tag with correct 14 digit GPS location number marked in RED which matches the XY coordinates obtained by GPS. Blue numbers refer to previous location ID
 - New LED Lights, Cust: Hidalgo County, Martin Martinez 956-292-7025
 - Install 1 in line PRI pole and run wire from existing OH XFMR. Install 27 new 122W LED lights.

Job Description: CUSTOMER SERVICE-CI-NEW SERVICE		WR: 88470933	
		WO: 362836	
Customer: MARTIN MARTINEZ	Date Completed: 10/25/2024	Man Hours: 35.44	
Location: 175 EL CONEJO DR	County: HIDALGO	Project ID: TXLEDTCCI	
District: 175 - Mission	City: MISSION	Crew HQ: 11712	
Circuit / Station: 94SB6000 CITRUS CITY	N V: 12.47KV	Phases: ABC N	
Drawn By: Blanca Garza	Trec Trimming: BY CUST.	OWR: N/A	
Office #: 956-586-8513	Accessible: YES	ESID: 10032789467510493	
Issued for:		Scale: 1:100	
FINAL		Page 4 of 5	
Rev. N/A			

Reference Pole 1
 Latitude: 26.3348,
 Longitude: -98.4512



COLOR CODE LEGEND
 RED -New Facilities
 GREEN -Existing/Transfer Facilities
 BLUE -Facilities to Be Removed

Note to Crew:
 -Update each pole ID tag with correct 14 digit GPS location number marked in **RED** which matches the XY coordinates obtained by GPS. **Blue** numbers refer to previous location ID
 - New LED Lights, Cust: Hidalgo County, Martin Martinez 956-292-7025
 - Install 1 in line PRI pole and run wire from existing OH XFMR. Install 27 new 122W LED lights.

Job Description: CUSTOMER SERVICE-CI-NEW SERVICE		WR: 88470933	
		WO: 362836	
Customer: MARTIN MARTINEZ		Date Completed: 10/25/2024	
Location: 175 EL CONEJO DR		County: HIDALGO	
District: 175 - Mission		City: MISSION	
Circuit / Station: 94SB6000 CITRUS CITY		N V: 12.47KV	
Drawn By: Blanca Garza		Trec Trimming: BY CUST.	
Office #: 956-586-8513		Accessible: YES	
Issued for:		Phases: ABC N	
FINAL		ESID: 10032789467510493	
		Scale: 1:100	
		Page 5 of 5	

