

APPLICATION AND CERTIFICATE FOR PAYMENT

TO OWNER:

The County of Hidalgo Pct. 01
Weslaco Texas 78599

PROJECT:

New Wellness Activity Community Center
Weslaco, Texas 78599

APPLICATION #:

1-Nov
Date: 11/20/2024
Period To: 11/30/2024
Job # 2143

FROM CONTRACTOR:

NM Contracting, LLC
2022 Orchid Ave.
McAllen, TX 78504

B2Z Engineering, LLC
3700 N. 10th Street, Ste. 205
McAllen, Texas 78501

PO #888726
4-1290-441-67-115-358-1-730

CONTRACT FOR: New Weslaco Activity Community Center

CONTRACTOR'S APPLICATION FOR PAYMENT

Application is made for payment, as shown below, in connection with the Contract.
Continuation Sheet is attached.

1. ORIGINAL CONTRACT SUM -----	\$	5,948,509.00
2. Net change by Change Orders -----	\$	
3. CONTRACT SUM TO DATE (Line 1 +/- 2)	\$	5,948,509.00
4. TOTAL COMPLETED & STORED TO DATE -\$		314,518.29
(Column G on Continuation Sheet)		
5. RETAINAGE:		
a. <u>5.0%</u> of Completed Work	\$	15,725.91
(Columns D+E on Continuation Sheet)		
b. <u>5.0%</u> of Stored Material	\$	
(Column F on Continuation Sheet)		
Total Retainage (Line 5a + 5b or		
Total in Column 1 of Continuation Sheet-----	\$	15,725.91
6. TOTAL EARNED LESS RETAINAGE -----	\$	298,792.38
(Line 4 less Line 5 Total)		
7. LESS PREVIOUS CERTIFICATES FOR PAYMENT		
(Line 6 from prior Certificate)-----		
8. CURRENT PAYMENT DUE -----	\$	298,792.38
9. BALANCE TO FINISH, INCLUDING RETAINAGE	\$	5,649,716.62
(Line 3 less Line 6)		

CHANGE ORDER SUMMARY	ADDITIONS	DEDUCTIONS
Total changes approved in previous months by Owner		
Total approved this Month		
TOTALS		
NET CHANGES by Change Order		

The undersigned Contractor certifies that to the best of the Contractor's knowledge, information and belief the Work covered by this Application for Payment has been completed in accordance with the Contract Documents, that all amounts have been paid by the Contractor for Work for which previous Certificates for Payment were issued and payments received from the Owner, and that current payment shown therein is now due.

CONTRACTOR:

By: [Signature] Date: 11/20/24

State of: Texas
County of: Hidalgo

Subscribed and sworn to before me this 20th day of November, 2024

Notary Public: M. Solano
My Commission expires: 06/26/25



CERTIFICATE FOR PAYMENT

In accordance with Contract Documents, based on on-site observations and the data comprising application, the Architect certifies to the Owner that to the best of the Architect's knowledge, information and belief the Work has progressed as indicated, the quality of the Work is in accordance with the Contract Documents, and the Contractor is entitled to payment of the AMOUNT CERTIFIED.

AMOUNT CERTIFIED ----- \$ 298,792.38

(Attach explanation if amount certified differs from the amount applied for. Initial all figures on this application and on the Continuation Sheet that are changed to conform to the amount certified.)

Project Manager

ARCHITECT:

By: [Signature] Date: 11/22/2024

This Certificate is not negotiable. The AMOUNT CERTIFIED is payable only to the Contractor named herein. Issuance, payment and acceptance of payment are without prejudice to any rights of the Owner of Contractor under this Contract.

CONTINUATION SHEET

ATTACHMENT TO PAY APPLICATION

APPLICATION NUMBER: 1-Nov

APPLICATION DATE: 11/20/2024

PERIOD TO: 11/30/2024

PROJECT:

Hidalgo County Pct. 01 Wellness Activity Community Center
Project No:C-24-02956-10-15

A Item No.	B Description of Work New Wellness Activity Community Center	C Scheduled Value	D Work Completed		F Materials Presently Stored (Not In D or E)	G Total Completed And Stored To Date (D + E + F)	H % (G/C)	I Balance To Finish (C - G)	J Retainage
			From Previous Application (D + E)	This Period					
1	DIVISION 1- GENERAL REQUIREMENTS								
2	General Conditions	\$140,195.00		7,009.75		7,009.75	5%	133,185.25	350.49
3	Permit	\$10,800.00				0.00	0%	10,800.00	0.00
4	Overhead & Profit	\$217,000.00		10,850.00		10,850.00	5%	206,150.00	542.50
5	P&P Bonds / Insurance	\$204,933.54		204,933.54		204,933.54	100%	0.00	10,246.68
6	Superintendent	\$41,000.00		2,050.00		2,050.00	5%	38,950.00	102.50
7	GC Mobilization	\$20,000.00		20,000.00		20,000.00	100%	0.00	1,000.00
8	SUBTOTAL	\$633,928.54	\$0.00	\$244,843.29	\$0.00	\$244,843.29	39%	\$389,085.25	\$12,242.16
9	DIVISION 3- CONCRETE								
10	Mobilization	\$30,800.00				0.00	0%	30,800.00	0.00
11	Foundation excavation perimeter beams	\$15,500.00				0.00	0%	15,500.00	0.00
12	Reinforcing/accessories materials	\$65,000.00				0.00	0%	65,000.00	0.00
13	Reinforcing accessories labor	\$53,000.00				0.00	0%	53,000.00	0.00
14	Concrete placement materials	\$140,000.00				0.00	0%	140,000.00	0.00
15	Concrete placement labor	\$79,625.00				0.00	0%	79,625.00	0.00
16	Mezzanine materials	\$6,375.00				0.00	0%	6,375.00	0.00
17	Mezzanine labor	\$15,000.00				0.00	0%	15,000.00	0.00
18	Light pole materials	\$3,000.00				0.00	0%	3,000.00	0.00
19	Light pole labor	\$4,000.00				0.00	0%	4,000.00	0.00
20	Transformer pad materials	\$1,500.00				0.00	0%	1,500.00	0.00
21	Transformer pad labor	\$1,500.00				0.00	0%	1,500.00	0.00
22	Termite treat material	\$5,000.00				0.00	0%	5,000.00	0.00
23	Sidewalk rebar materials	\$1,500.00				0.00	0%	1,500.00	0.00
24	Sidewalk rebar labor	\$2,500.00				0.00	0%	2,500.00	0.00
25	Sidewalk concrete material	\$6,500.00				0.00	0%	6,500.00	0.00
26	Sidewalk concrete labor	\$4,000.00				0.00	0%	4,000.00	0.00
27	Dumpster pad rebar materials	\$1,500.00				0.00	0%	1,500.00	0.00
28	Dumpster pad rebar labor	\$1,000.00				0.00	0%	1,000.00	0.00
29	Dumpster pad concrete materials	\$2,000.00				0.00	0%	2,000.00	0.00
30	Dumpster pad concrete labor	\$2,000.00				0.00	0%	2,000.00	0.00
31	Housekeeping pad / Generator rebar materials	\$1,750.00				0.00	0%	1,750.00	0.00
32	Housekeeping pad / Generator rebar labor	\$1,000.00				0.00	0%	1,000.00	0.00
33	Housekeeping pad / Generator concrete materials	\$2,500.00				0.00	0%	2,500.00	0.00
34	Housekeeping pad / Generator concrete labor	\$4,000.00				0.00	0%	4,000.00	0.00
35	SUBTOTAL	\$450,550.00	\$0.00	\$0.00	\$0.00	\$0.00	0%	\$450,550.00	\$0.00

36	DIVISION 4- MASONRY									
37	CMU submittal	\$20,000.00				0.00	0%	20,000.00	0.00	
38	Masonry CMU mobilization	\$20,000.00				0.00	0%	20,000.00	0.00	
39	North CMU wall material	\$26,000.00				0.00	0%	26,000.00	0.00	
40	South CMU wall material	\$26,000.00				0.00	0%	26,000.00	0.00	
41	East CMU wall material	\$42,000.00				0.00	0%	42,000.00	0.00	
42	West CMU wall material	\$42,000.00				0.00	0%	42,000.00	0.00	
43	Interior CMU wall material	\$40,000.00				0.00	0%	40,000.00	0.00	
44	Split face CMU columns material	\$25,000.00				0.00	0%	25,000.00	0.00	
45	North CMU wall labor	\$27,000.00				0.00	0%	27,000.00	0.00	
46	South CMU wall labor	\$27,000.00				0.00	0%	27,000.00	0.00	
47	East CMU wall labor	\$50,000.00				0.00	0%	50,000.00	0.00	
48	West CMU wall labor	\$50,000.00				0.00	0%	50,000.00	0.00	
49	Interior CMU wall labor	\$60,000.00				0.00	0%	60,000.00	0.00	
50	Split face CMU columns labor	\$25,000.00				0.00	0%	25,000.00	0.00	
51	Sand material	\$15,000.00				0.00	0%	15,000.00	0.00	
52	Masonry cement materials	\$20,000.00				0.00	0%	20,000.00	0.00	
53	CMU fill material	\$20,000.00				0.00	0%	20,000.00	0.00	
54	Pump rental	\$20,000.00				0.00	0%	20,000.00	0.00	
55	Scaffolds	\$40,000.00				0.00	0%	40,000.00	0.00	
56	Equipment rental	\$16,000.00				0.00	0%	16,000.00	0.00	
57	Fuels	\$20,000.00				0.00	0%	20,000.00	0.00	
58	Reinforcement	\$54,000.00				0.00	0%	54,000.00	0.00	
59	SUBTOTAL	\$685,000.00	\$0.00	\$0.00	\$0.00	\$0.00	0%	\$685,000.00	\$0.00	
60	DIVISION 5 - METALS									
61	Structural Steel Materials & Labor									
62	Shop Drawing	\$30,000.00				0.00	0%	30,000.00	0.00	
63	PEMB Steel Materials	\$175,000.00				0.00	0%	175,000.00	0.00	
64	PEMB Steel Fabrication	\$154,268.00				0.00	0%	154,268.00	0.00	
65	Structural Steel material	\$55,000.00				0.00	0%	55,000.00	0.00	
66	Steel Bar joist, metal deck, Epic deck material, Bollards, Dumpste	\$95,000.00				0.00	0%	95,000.00	0.00	
67	Structural Steel Fabrication	\$45,000.00				0.00	0%	45,000.00	0.00	
68	PEMB Structure Erection	\$150,000.00				0.00	0%	150,000.00	0.00	
69	Steel Erection - Mezzanine	\$50,000.00				0.00	0%	50,000.00	0.00	
70	Equipment	\$45,000.00				0.00	0%	45,000.00	0.00	
71	Metal Roof & Wall Panels	\$135,000.00				0.00	0%	135,000.00	0.00	
72	SUBTOTAL	\$934,268.00	\$0.00	\$0.00	\$0.00	\$0.00	0%	\$934,268.00	\$0.00	
73	DIVISION 6 - WOODS & PLASTICS									
74	Millwork									
75	Millwork materials	\$5,000.00				0.00	0%	5,000.00	0.00	
76	Millwork installation labor	\$2,500.00				0.00	0%	2,500.00	0.00	
77	SUBTOTAL	\$7,500.00	\$0.00	\$0.00	\$0.00	\$0.00	0%	\$7,500.00	\$0.00	
78	DIVISION 7- THERMAL & MOISTURE PROTECTION									
79										
80	Mobilization	\$10,000.00				0.00	0%	10,000.00	0.00	
81	Membrane flashing materials	\$19,740.00				0.00	0%	19,740.00	0.00	
82	Membrane flashing labor	\$13,160.00				0.00	0%	13,160.00	0.00	
83	Dampproofing materials	\$34,360.00				0.00	0%	34,360.00	0.00	
84	Dampproofing labor	\$22,400.00				0.00	0%	22,400.00	0.00	

85	ISO Board materials	\$23,430.00				0.00	0%	23,430.00	0.00	
86	ISO Board labor	\$15,350.00				0.00	0%	15,350.00	0.00	
87	Foam in place material	\$25,735.00				0.00	0%	25,735.00	0.00	
88	Foam in place labor	\$17,155.00				0.00	0%	17,155.00	0.00	
89	Open cell foam material	\$34,215.00				0.00	0%	34,215.00	0.00	
90	Open cell foam labor	\$24,775.00				0.00	0%	24,775.00	0.00	
91	Caulking CMU, Sidewalk materials	\$6,770.00				0.00	0%	6,770.00	0.00	
92	Caulking CMU, Sidewalk labor	\$2,910.00				0.00	0%	2,910.00	0.00	
93	SUBTOTAL	\$250,000.00	\$0.00	\$0.00	\$0.00	\$0.00	0%	\$250,000.00	\$0.00	
94	DIVISION 8- DOORS & WINDOWS									
95	Doors									
96	H M Frames / Doors material	\$31,615.00				0.00	0%	31,615.00	0.00	
97	Wood Doors material	\$19,950.00				0.00	0%	19,950.00	0.00	
98	Doors Hardware material	\$100,000.00				0.00	0%	100,000.00	0.00	
99	Overhead doors materials	\$16,896.00				0.00	0%	16,896.00	0.00	
100	Overhead doors labor	\$3,039.00				0.00	0%	3,039.00	0.00	
101	Storefront Glazing									
102	Mobilization	\$3,027.00				0.00	0%	3,027.00	0.00	
103	Glass Material	\$8,500.00				0.00	0%	8,500.00	0.00	
104	Glass Lab	\$4,500.00				0.00	0%	4,500.00	0.00	
105	Aluminum Mat	\$14,494.00				0.00	0%	14,494.00	0.00	
106	Aluminum Lab	\$7,500.00				0.00	0%	7,500.00	0.00	
107	Metal Stud/Drywall/SAT/Carpentry									
108	Metal stud structural materials	\$33,764.00				0.00	0%	33,764.00	0.00	
109	Metal stud structural labor	\$30,894.00				0.00	0%	30,894.00	0.00	
110	Metal stud Interior materials	\$35,273.00				0.00	0%	35,273.00	0.00	
111	Metal studs Interior labor	\$54,040.00				0.00	0%	54,040.00	0.00	
112	Drywall material	\$36,678.00				0.00	0%	36,678.00	0.00	
113	Drywall labor	\$41,408.00				0.00	0%	41,408.00	0.00	
114	Insulation materials	\$13,476.00				0.00	0%	13,476.00	0.00	
115	Insulation labor	\$12,725.00				0.00	0%	12,725.00	0.00	
116	Suspended Acoustical ceiling material	\$27,031.00				0.00	0%	27,031.00	0.00	
117	Suspended Acoustical ceiling labor	\$24,088.00				0.00	0%	24,088.00	0.00	
118	Gypboard ceiling materials	\$3,388.00				0.00	0%	3,388.00	0.00	
119	Gypboard ceilings labor	\$4,235.00				0.00	0%	4,235.00	0.00	
120	Acoustical panels materials	\$40,936.00				0.00	0%	40,936.00	0.00	
121	Acoustical panels labor	\$11,500.00				0.00	0%	11,500.00	0.00	
122	General labor	\$13,725.00				0.00	0%	13,725.00	0.00	
123	Rough carpentry	\$5,324.00				0.00	0%	5,324.00	0.00	
124	SUBTOTAL	\$598,006.00	\$0.00	\$0.00	\$0.00	\$0.00	0%	\$598,006.00	\$0.00	
125	DIVISION 9- FINISHES									
126	Flooring									
127	Admin / insurance	\$3,845.00				0.00	0%	3,845.00	0.00	
128	Samples / submittals	\$450.00				0.00	0%	450.00	0.00	
129	Materials handling and mobilization	\$900.00				0.00	0%	900.00	0.00	
130	Resilient materials	\$7,700.00				0.00	0%	7,700.00	0.00	
131	Resilient labor	\$3,000.00				0.00	0%	3,000.00	0.00	
132	Ceramic tile materials	\$25,900.00				0.00	0%	25,900.00	0.00	
133	Ceramic tile labor	\$15,000.00				0.00	0%	15,000.00	0.00	

134	Floor patch / prep materials	\$200.00				0.00	0%	200.00	0.00
135	Floor patch / prep labor	\$200.00				0.00	0%	200.00	0.00
136	Sports flooring	\$209,190.00				0.00	0%	209,190.00	0.00
137	Painting								
138	Tape / float materials	\$6,000.00				0.00	0%	6,000.00	0.00
139	Tape / float labor	\$12,000.00				0.00	0%	12,000.00	0.00
140	Primer materials	\$2,000.00				0.00	0%	2,000.00	0.00
141	Primer labor	\$3,000.00				0.00	0%	3,000.00	0.00
142	Block filler materials	\$12,000.00				0.00	0%	12,000.00	0.00
143	Block filler labor	\$16,000.00				0.00	0%	16,000.00	0.00
144	Paint material	\$12,000.00				0.00	0%	12,000.00	0.00
145	Paint labor	\$17,000.00				0.00	0%	17,000.00	0.00
146	Paint HM frames and doors material	\$2,000.00				0.00	0%	2,000.00	0.00
147	Paint HM Frames and doors labor	\$3,000.00				0.00	0%	3,000.00	0.00
148	Dryfall exposed steel / foam materials	\$5,000.00				0.00	0%	5,000.00	0.00
149	Dryfall exposed steel / foam labor	\$7,000.00				0.00	0%	7,000.00	0.00
150	Ext. block filler materials	\$3,500.00				0.00	0%	3,500.00	0.00
151	Ext. block filler labor	\$4,500.00				0.00	0%	4,500.00	0.00
152	Elastomeric paint material	\$5,750.00				0.00	0%	5,750.00	0.00
153	Elastomeric paint labor	\$8,000.00				0.00	0%	8,000.00	0.00
154	SUBTOTAL	\$385,135.00	\$0.00	\$0.00	\$0.00	\$0.00	0%	\$385,135.00	\$0.00
155	DIVISION 10- SPECIALTIES								
156	Toilet Partitions material	\$7,580.00				0.00	0%	7,580.00	0.00
157	Bathroom accessories material	\$6,700.00				0.00	0%	6,700.00	0.00
158	Interior Building signage	\$2,049.00				0.00	0%	2,049.00	0.00
159	Dedicatory Signage and Building Plaque	\$18,055.00				0.00	0%	18,055.00	0.00
160	FEC material	\$2,035.00				0.00	0%	2,035.00	0.00
161	Handicap post / signage	\$400.00				0.00	0%	400.00	0.00
162	Tack board	\$1,275.00				0.00	0%	1,275.00	0.00
163	Defibrillator	\$1,983.00				0.00	0%	1,983.00	0.00
164	Bench / Metal Lockers	\$1,992.00				0.00	0%	1,992.00	0.00
165	SUBTOTAL	\$42,069.00	\$0.00	\$0.00	\$0.00	\$0.00	0%	42,069.00	\$0.00
166	DIVISION11 EQUIPMENT								
167	Draper gym equipment	\$128,512.00				0.00	0%	128,512.00	0.00
168	Varsity Sportable scoreboards	\$12,140.00				0.00	0%	12,140.00	0.00
169	DGJD Tip and Roll bleachers	\$23,440.00				0.00	0%	23,440.00	0.00
170	Gym equipment install	\$26,680.00				0.00	0%	26,680.00	0.00
171	Engineering/Project management	\$10,040.00				0.00	0%	10,040.00	0.00
172	Stainless Steel counter	\$9,000.00				0.00	0%	9,000.00	0.00
173	SUBTOTAL	\$209,812.00	\$0.00	\$0.00	\$0.00	\$0.00	0%	\$209,812.00	\$0.00
174	DIVISION 21- FIRE SPRINKLER SYSTEM								
175	Mobilization	\$2,100.00				0.00	0%	2,100.00	0.00
176	Design work	\$2,700.00				0.00	0%	2,700.00	0.00
177	Submittals	\$300.00				0.00	0%	300.00	0.00
178	Materials	\$51,640.00				0.00	0%	51,640.00	0.00
179	Underground installation	\$13,120.00				0.00	0%	13,120.00	0.00
180	Underground labor	\$10,000.00				0.00	0%	10,000.00	0.00
181	Riser installation	\$1,114.00				0.00	0%	1,114.00	0.00
182	Main lines installation	\$2,228.00				0.00	0%	2,228.00	0.00
183	Branch lines installation	\$3,899.00				0.00	0%	3,899.00	0.00

184	Sprinkler heads installation	\$3,342.00				0.00	0%	3,342.00	0.00
185	Testing	\$557.00				0.00	0%	557.00	0.00
186	SUBTOTAL	\$91,000.00	\$0.00	\$0.00	\$0.00	\$0.00	0%	\$91,000.00	\$0.00
187	DIVISION 22- PLUMBING								
188	Submittals	\$1,653.60				0.00	0%	1,653.60	0.00
189	Material								
190	Sanitary Waste, Drain BFF	\$33,072.10				0.00	0%	33,072.10	0.00
191	Sanitary Waste, Vent AFF	\$11,575.23				0.00	0%	11,575.23	0.00
192	Domestic water	\$11,575.23				0.00	0%	11,575.23	0.00
193	Insulation mat	\$11,575.23				0.00	0%	11,575.23	0.00
194	Fixtures Mat	\$32,245.29				0.00	0%	32,245.29	0.00
195	Labor								
196	Sanitary Waste, Drain BFF	\$16,536.05				0.00	0%	16,536.05	0.00
197	Sanitary Waste, Vent AFF	\$7,441.22				0.00	0%	7,441.22	0.00
198	Domestic water	\$7,441.22				0.00	0%	7,441.22	0.00
199	Insulation mat	\$7,441.22				0.00	0%	7,441.22	0.00
200	Fixtures Mat	\$24,804.07				0.00	0%	24,804.07	0.00
201	SUBTOTAL	\$165,360.46	\$0.00	\$0.00	\$0.00	\$0.00	0%	\$165,360.46	\$0.00
202	DIVISION 23- HVAC								
203	Mobilization	\$12,000.00				0.00	0%	12,000.00	0.00
204	Submittals	\$3,500.00				0.00	0%	3,500.00	0.00
205	Permit	\$1,250.00				0.00	0%	1,250.00	0.00
206	Equipment rental	\$11,000.00				0.00	0%	11,000.00	0.00
207	Fabricate Spiral ductwork materials	\$172,306.00				0.00	0%	172,306.00	0.00
208	Fabricate Spiral labor	\$37,500.00				0.00	0%	37,500.00	0.00
209	Ductwork installation	\$112,500.00				0.00	0%	112,500.00	0.00
210	Ductwork Installation materials/accessories	\$24,045.00				0.00	0%	24,045.00	0.00
211	Air device materials	\$8,891.00				0.00	0%	8,891.00	0.00
212	Air device labor	\$2,800.00				0.00	0%	2,800.00	0.00
213	Exhaust fans / heaters materials	\$2,280.00				0.00	0%	2,280.00	0.00
214	Exhaust fans / heaters labor	\$1,500.00				0.00	0%	1,500.00	0.00
215	Overhead piping materials	\$3,425.00				0.00	0%	3,425.00	0.00
216	Overhead piping labor	\$3,630.00				0.00	0%	3,630.00	0.00
217	RTU / fan coil unit equipment	\$140,067.00				0.00	0%	140,067.00	0.00
218	RTU / fan coil unit labor	\$2,800.00				0.00	0%	2,800.00	0.00
219	Controls materials / labor	\$55,160.00				0.00	0%	55,160.00	0.00
220	Test and Balance	\$6,050.00				0.00	0%	6,050.00	0.00
221	SUBTOTAL	\$600,704.00	\$0.00	\$0.00	\$0.00	\$0.00	0%	\$600,704.00	\$0.00
223	DIVISION 26- ELECTRICAL								
224	Mobilization	\$15,000.00				0.00	0%	15,000.00	0.00
225	Underground conduit materials	\$33,000.00				0.00	0%	33,000.00	0.00
226	Underground conduit labor	\$53,000.00				0.00	0%	53,000.00	0.00
227	Electrical rough-in materials	\$31,000.00				0.00	0%	31,000.00	0.00
228	Electrical rough-in labor	\$50,000.00				0.00	0%	50,000.00	0.00
229	Electrical wire materials	\$38,000.00				0.00	0%	38,000.00	0.00
230	Electrical wire labor	\$55,000.00				0.00	0%	55,000.00	0.00
231	Electrical gear materials	\$68,000.00				0.00	0%	68,000.00	0.00
232	Electrical gear labor	\$31,000.00				0.00	0%	31,000.00	0.00

233	Light fixtures materials	\$51,000.00				0.00	0%	51,000.00	0.00
234	Light fixtures labor	\$36,000.00				0.00	0%	36,000.00	0.00
235	Trim out	\$1,900.00				0.00	0%	1,900.00	0.00
236		\$462,900.00	\$0.00	\$0.00	\$0.00	\$0.00	0%	\$462,900.00	\$0.00
237	DIVISION 31 - EARTHWORK								
238	Mobilization	\$20,000.00				0.00	0%	20,000.00	0.00
239	Inlet protection labor	\$270.00				0.00	0%	270.00	0.00
240	Inlet protection material	\$630.00				0.00	0%	630.00	0.00
241	Silt fence labor	\$2,209.00				0.00	0%	2,209.00	0.00
242	Silt fence material	\$5,427.00				0.00	0%	5,427.00	0.00
243	Remove and spread on site 2' NG labor	\$4,530.00		4,530.00		4,530.00	100%	0.00	226.50
244	Remove and spread on site 2' NG material	\$10,570.00		10,570.00		10,570.00	100%	0.00	528.50
245	Select fill 2.5 labor	\$21,693.00		10,846.50		10,846.50	50%	10,846.50	542.33
246	Select fill 2.5 material	\$50,617.00		25,308.50		25,308.50	50%	25,308.50	1,265.43
247	6" subgrade labor	\$3,876.00		3,876.00		3,876.00	100%	0.00	193.80
248	6" subgrade material	\$9,044.00		9,044.00		9,044.00	100%	0.00	452.20
249	SUBTOTAL	\$128,866.00	0.00	64,175.00	0.00	64,175.00	50%	64,691.00	3,208.75
250	DIVISION 32 - EXTERIOR IMPROVEMENTS								
251	Remove and spread on site 8" labor	\$2,955.00				0.00	0%	2,955.00	0.00
252	Remove and spread on site 8" material	\$6,895.00				0.00	0%	6,895.00	0.00
253	6" subgrade prep w/3% lime labor	\$13,211.00				0.00	0%	13,211.00	0.00
254	6" subgrade prep w/3% lime material	\$30,825.00				0.00	0%	30,825.00	0.00
255	18" curb and gutter labor	\$6,065.00				0.00	0%	6,065.00	0.00
256	18" curb and gutter material	\$14,153.00				0.00	0%	14,153.00	0.00
257	36" valley gutter	\$900.00				0.00	0%	900.00	0.00
258	36" valley gutter	\$2,100.00				0.00	0%	2,100.00	0.00
259	SUBTOTAL	\$77,104.00	\$0.00	\$0.00	\$0.00	\$0.00	\$0.00	\$77,104.00	\$0.00
260	DIVISION 33 - UTILITIES								
261	Domestic water								
262	Mobilization	\$5,500.00		5,500.00		5,500.00	100%	0.00	275.00
263	8" DR PVC water pipe labor	\$8,820.00				0.00	0%	8,820.00	0.00
264	8" DR PVC water pipe material	\$20,580.00				0.00	0%	20,580.00	0.00
265	8" gate valve labor	\$2,100.00				0.00	0%	2,100.00	0.00
266	8" gate valve material	\$4,900.00				0.00	0%	4,900.00	0.00
267	Tapping sleeve labor	\$1,050.00				0.00	0%	1,050.00	0.00
268	Tapping sleeve material	\$2,450.00				0.00	0%	2,450.00	0.00
269	Fire hydrant assembly labor	\$2,340.00				0.00	0%	2,340.00	0.00
270	Fire hydrant assembly material	\$5,460.00				0.00	0%	5,460.00	0.00
271	2" water service labor	\$600.00				0.00	0%	600.00	0.00
272	2" water service material	\$1,400.00				0.00	0%	1,400.00	0.00
273	2" flush valve labor	\$450.00				0.00	0%	450.00	0.00
274	2" flush valve material	\$1,050.00				0.00	0%	1,050.00	0.00
275	Misc fitting labor	\$405.00				0.00	0%	405.00	0.00
276	Misc fitting materials	\$945.00				0.00	0%	945.00	0.00
277	4" casing labor	\$240.00				0.00	0%	240.00	0.00
278	4" casing materials	\$560.00				0.00	0%	560.00	0.00
279	Sanitary sewer								
280	8" sdr 26 SS line labor	\$5,872.00				0.00	0%	5,872.00	0.00
281	8" sdr 26 SS line material	\$13,702.00				0.00	0%	13,702.00	0.00

282	48" manhole labor	\$4,200.00				0.00	0%	4,200.00	0.00
283	48" manhole material	\$9,800.00				0.00	0%	9,800.00	0.00
284	Clean out	\$1,200.00				0.00	0%	1,200.00	0.00
285	15" pvc casing labor	\$612.00				0.00	0%	612.00	0.00
286	15" pvc casing materials	\$1,428.00				0.00	0%	1,428.00	0.00
287	Storm sewer								
288	24" RCP labor	\$8,040.00				0.00	0%	8,040.00	0.00
289	24" RCP material	\$18,840.00				0.00	0%	18,840.00	0.00
290	30" RCP labor	\$4,788.00				0.00	0%	4,788.00	0.00
291	30" RCP material	\$11,174.00				0.00	0%	11,174.00	0.00
292	36" RCP labor	\$1,740.00				0.00	0%	1,740.00	0.00
293	36" RCP material	\$4,060.00				0.00	0%	4,060.00	0.00
294	Type C inlet labor	\$8,100.00				0.00	0%	8,100.00	0.00
295	Type C inlet material	\$18,900.00				0.00	0%	18,900.00	0.00
296	Stormline tap Material	\$1,500.00				0.00	0%	1,500.00	0.00
297	Stormline tap Labor	\$3,500.00				0.00	0%	3,500.00	0.00
298	SUBTOTAL	\$176,306.00	\$0.00	\$5,500.00	\$0.00	\$5,500.00	3%	\$170,806.00	\$275.00
299	ALLOWANCES								
300	Landscaping allowance	\$50,000.00				\$0.00	0%	\$50,000.00	0.00
301	SUBTOTAL	\$50,000.00	\$0.00	\$0.00	\$0.00	\$0.00	0%	\$50,000.00	\$0.00
302	GRAND TOTALS	\$5,948,509.00	\$0.00	\$314,518.29	\$0.00	\$314,518.29	5%	\$5,633,990.71	\$15,725.91

Date 11/18/2024

I, ALFONSO SALINAS ADMIN ASST
(Name of Signatory Party) (Title)

do hereby state:

(1) That I pay or supervise the payment of the persons employed by

H&R LEASE SERVICE LLC

(Contractor or Subcontractor) on the

Weslaco Wellness Clinic; that during the payroll period commencing on the

(Building or Work)

09 day of November, 2024, and ending the 15 day of September, 2024,

all persons employed on said project have been paid the full weekly wages earned, that no rebates have been or will be made either directly or indirectly to or on behalf of said

H&R LEASE SERVICE LLC

from the full

(Contractor or Subcontractor)

weekly wages earned by any person and that no deductions have been made either directly or indirectly from the full wages earned by any person, other than permissible deductions as defined in Regulations, Part 3 (29 C.F.R. Subtitle A), issued by the Secretary of Labor under the Copeland Act, as amended (48 Stat. 948, 63 Stat. 108, 72 Stat. 967; 76 Stat. 357; 40 U.S.C. § 3145), and described below.

(2) That any payrolls otherwise under this contract required to be submitted for the above period are correct and complete; that the wage rates for laborers or mechanics contained therein are not less than the applicable wage rates contained in any wage determination incorporated into the contract; that the classifications set forth therein for each laborer or mechanic conform with the work he performed.

(3) That any apprentices employed in the above period are duly registered in a bona fide apprenticeship program registered with a State apprenticeship agency recognized by the Bureau of Apprenticeship and Training, United States Department of Labor, or if no such recognized agency exists in a State, are registered with the Bureau of Apprenticeship and Training, United States Department of Labor.

(4) That:

(a) WHERE FRINGE BENEFITS ARE PAID TO APPROVED PLANS, FUNDS, OR PROGRAMS

- in addition to the basic hourly wage rates paid to each laborer or mechanic listed in the above referenced payroll, payments of fringe benefits as listed in the contract have been or will be made to appropriate programs for the benefit of such employees, except as noted in section 4(c) below.

(b) WHERE FRINGE BENEFITS ARE PAID IN CASH

- Each laborer or mechanic listed in the above referenced payroll has been paid, as indicated on the payroll, an amount not less than the sum of the applicable basic hourly wage rate plus the amount of the required fringe benefits as listed in the contract, except as noted in section 4(c) below.

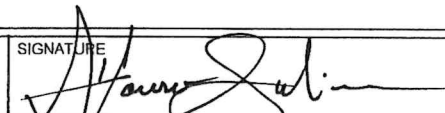
(c) EXCEPTIONS

EXCEPTION (CRAFT)	EXPLANATION

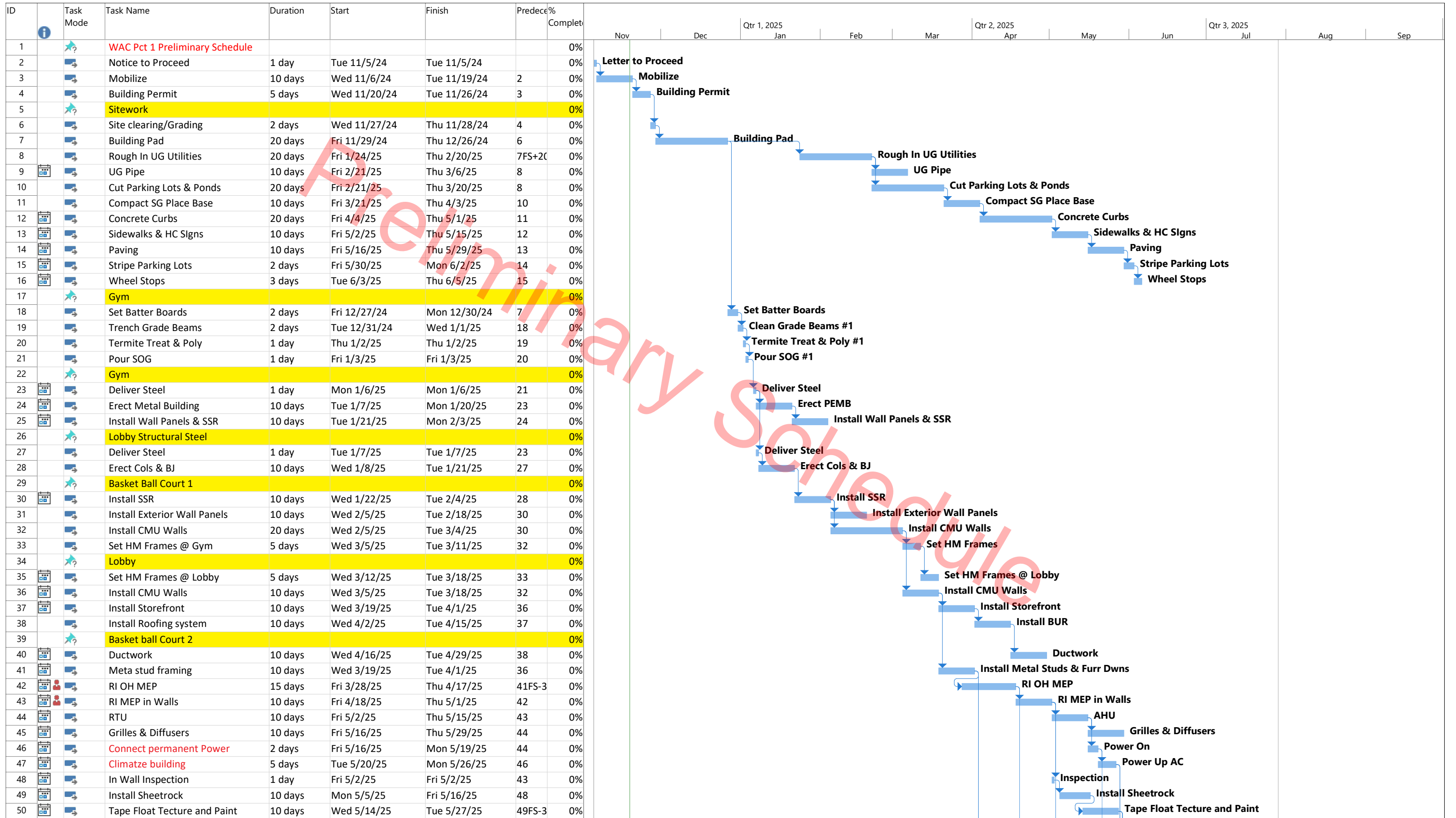
REMARKS:

NAME AND TITLE
ALFONSO SALINAS / ADMIN ASST

SIGNATURE



THE WILLFUL FALSIFICATION OF ANY OF THE ABOVE STATEMENTS MAY SUBJECT THE CONTRACTOR OR SUBCONTRACTOR TO CIVIL OR CRIMINAL PROSECUTION. SEE SECTION 1001 OF TITLE 18 AND SECTION 231 OF TITLE 31 OF THE UNITED STATES CODE.



Project: WAC 1
Date: Tue 11/19/24

Task	Summary	Inactive Milestone	Duration-only	Start-only	External Milestone	Manual Progress
Split	Project Summary	Inactive Summary	Manual Summary Rollup	Finish-only	Deadline	
Milestone	Inactive Task	Manual Task	Manual Summary	External Tasks	Progress	

