



## **Project Description**

**Project Name:**

Hidalgo County Precinct 1 Hike & Bike Trail Project

**Project Number:**

ARPA-21-121-037

**Program Name:**

The Hidalgo County Precinct 1 Hike & Bike Trail Project will be part of the Hidalgo County American Rescue Plan Act Recreational Development Program.

**Department Name:**

Hidalgo County Precinct 1

**ARPA Expenditure Category:**

2: Negative Economic Impacts

**ARPA Eligibility Category:**

2.22: Strong Healthy Communities: Neighborhood Features that Promote Health and Safety<sup>^</sup>

**Project Description:**

Hidalgo County Precinct 1 is planning on developing a Hike & Bike Trail in their Mid-Valley area that will pass by the Cities of Mercedes, Weslaco, Donna, Alamo, and Pharr. The Precinct 1 Hike & Bike Trail is designed to build stronger neighborhoods and communities and address health disparities and the social determinants of health.

Treasury's Coronavirus State and Local Fiscal Recovery Funds (CSLFRF) Interim Final Rule recognizes parks, hike & bike trails and other recreational spaces as methods of creating stronger communities, addressing social determinants of health and confronting public health disparities.

**Need Assessment:**

The purpose of the Hidalgo County Precinct 1 Hike & Bike Trail is congruent with the overall objective of the Hidalgo County American Rescue Plan Act Recreational Development Program, which is to improve the accessibility and function of recreational spaces to constituents living in, near and around Qualified Census Tract areas.

By creating access to more recreational space together with park amenities including but not limited to lighting, park benches, and exercise equipment, the hike and bike trails are intended to provide outdoor recreational spaces that will be responsive to the needs of disproportionately impacted communities by promoting healthier living environments and socialization which



## Hidalgo County • Department of Budget & Management

### American Rescue Plan Act 2021

---

helps to mitigate the spread of COVID-19 throughout and beyond the ongoing public health emergency.

**Fiscal Impact:** \$4,875,000.00

Trail - \$4,061,906.84

Personnel - \$813,093.16

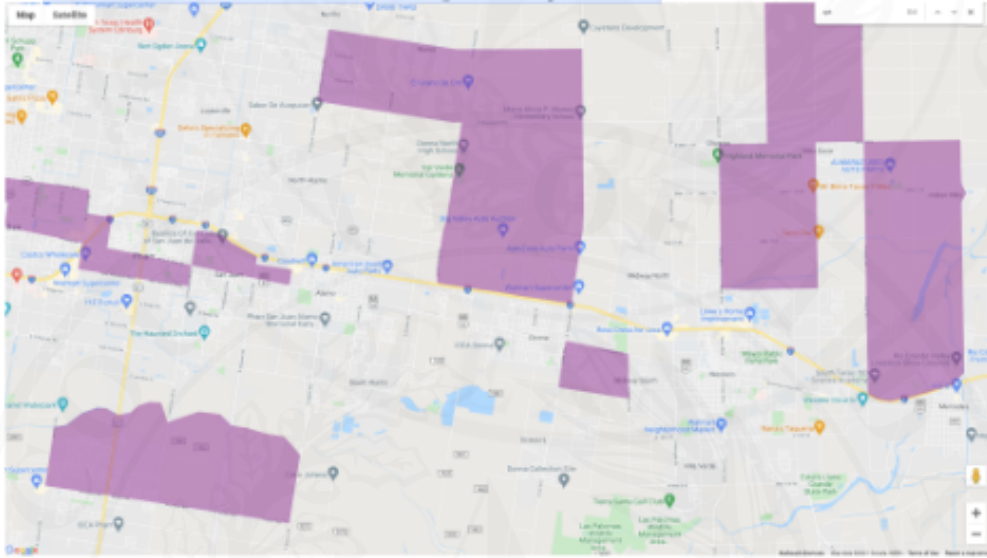
### Proposed Hike and Bike Trail Map





**^QCT Preliminary Analysis**

- Precinct 1 Hike & Bike Trail QCT Analysis 2021



- Precinct 1 Hike & Bike Trail QCT Analysis 2022

