



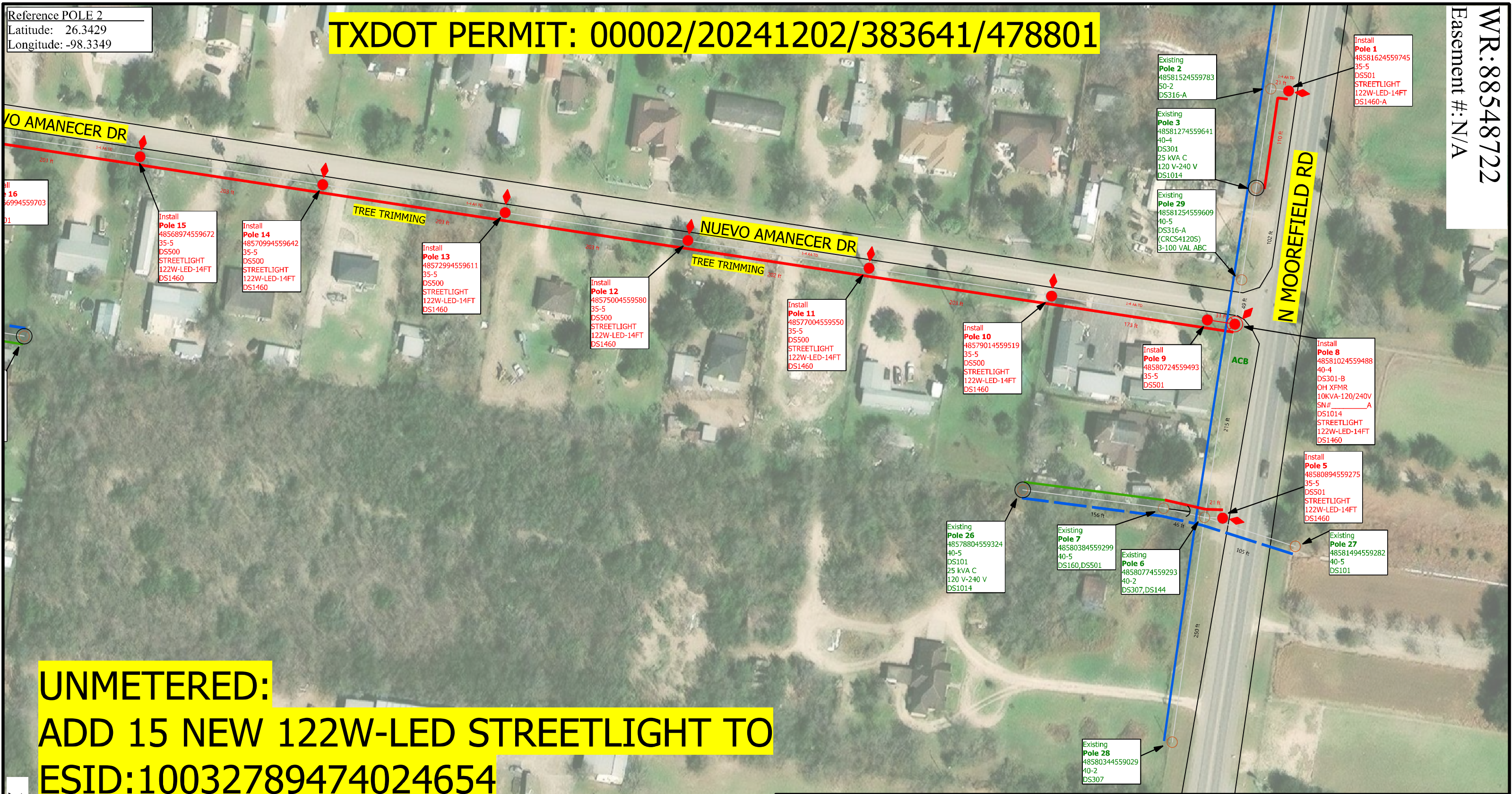
COLOR CODE LEGEND
 RED -New Facilities
 GREEN -Existing/Transfer Facilities
 BLUE -Facilities To Be Removed



Reference POLE 2
 Latitude: 26.3429
 Longitude: -98.3349

TXDOT PERMIT: 00002/20241202/383641/478801

WR: 88548722
 Easement #: N/A



**UNMETERED:
 ADD 15 NEW 122W-LED STREETLIGHT TO
 ESID:10032789474024654**

Note to Crew:

- Update each pole ID tag with correct 14 digit GPS location number marked in **RED** which matches the XY coordinates obtained by GPS. **Blue** numbers refer to previous location ID
- 15 NEW STREETLIGHTS-CUSTOMER MARTIN MARTINEZ 956-292-7025
- INSTALL 15 STREETLIGHT, 18 SECONDARY POLE, 1 PRIMARY POLE, AND OH TRANSFORMER

COLOR CODE LEGEND

RED	-New Facilities
GREEN	-Existing/Transfer Facilities
BLUE	-Facilities to Be Removed

Job Description: 15 NEW STREETLIGHT FOR NUEVO AMANECEER SUBDIVISION ON BUENA VIDA ST		WR: 88548722	
Customer: MARTIN MARTINEZ		WO: 364009	
Location: 175 1910 NUEVO AMANECEER DR		Date Completed: 11/02/24	
District: 175 - Mission		County: HIDALGO	
City: MISSION		Crew HQ: 11712	
Circuit / Station: 94SB3960/MOORE FIELD		N V: 12.47KV	
Phases: ABC N		Man Hours: 77.2	
Drawn By: Cyven Hernandez		Tree Trimming: BY CUSTOMER	
Office #: Ccll:(956)673-7761		OWR: N/A	
Accessible: YES		ESID: 10032789474024654	
Issued for:		Scale: 1:100	
FINAL		Page 2 of 3	



WR:88548722

Easement #:N/A

TXDOT PERMIT: 00002/20241202/383641/478801

Reference POLE 18

Latitude: 26.3422

Longitude: -98.3396



**UNMETERED:
ADD 15 NEW 122W-LED STREETLIGHT TO
ESID:10032789474024654**

Note to Crew:

- Update each pole ID tag with correct 14 digit GPS location number marked in **RED** which matches the XY coordinates obtained by GPS. **Blue** numbers refer to previous location ID
- 15 NEW STREETLIGHTS-CUSTOMER MARTIN MARTINEZ 956-292-7025
- INSTALL 15 STREETLIGHT, 18 SECONDARY POLE, 1 PRIMARY POLE, AND OH TRANSFORMER

Job Description: 15 NEW STREETLIGHT FOR NUEVO AMANECER SUBDIVISION ON BUENA VIDA ST		WR: 88548722
Customer: MARTIN MARTINEZ		WO: 364009
Date Completed: 12/02/24		Man Hours: 77.2
Location: 175 1910 NUEVO AMANECER DR		County: HIDALGO
Project ID: TXLEDTCC1		
District: 175 - Mission	City: MISSION	Crew HQ: 11712
Circuit / Station: 94SB3960/MOORE FIELD	N V: 12.47KV	Phases: ABC N
Drawn By: Cyven Hernandez	Tree Trimming: BY CUSTOMER	OWR: N/A
Office #: Cell:(956)673-7761	Accessible: YES	ESID: 10032789474024654
Issued for:		Scale: 1:100
		Page 3 of 3

COLOR CODE LEGEND
RED -New Facilities
GREEN -Existing/Transfer Facilities
BLUE -Facilities to Be Removed

FINAL

Rev. N/A

