

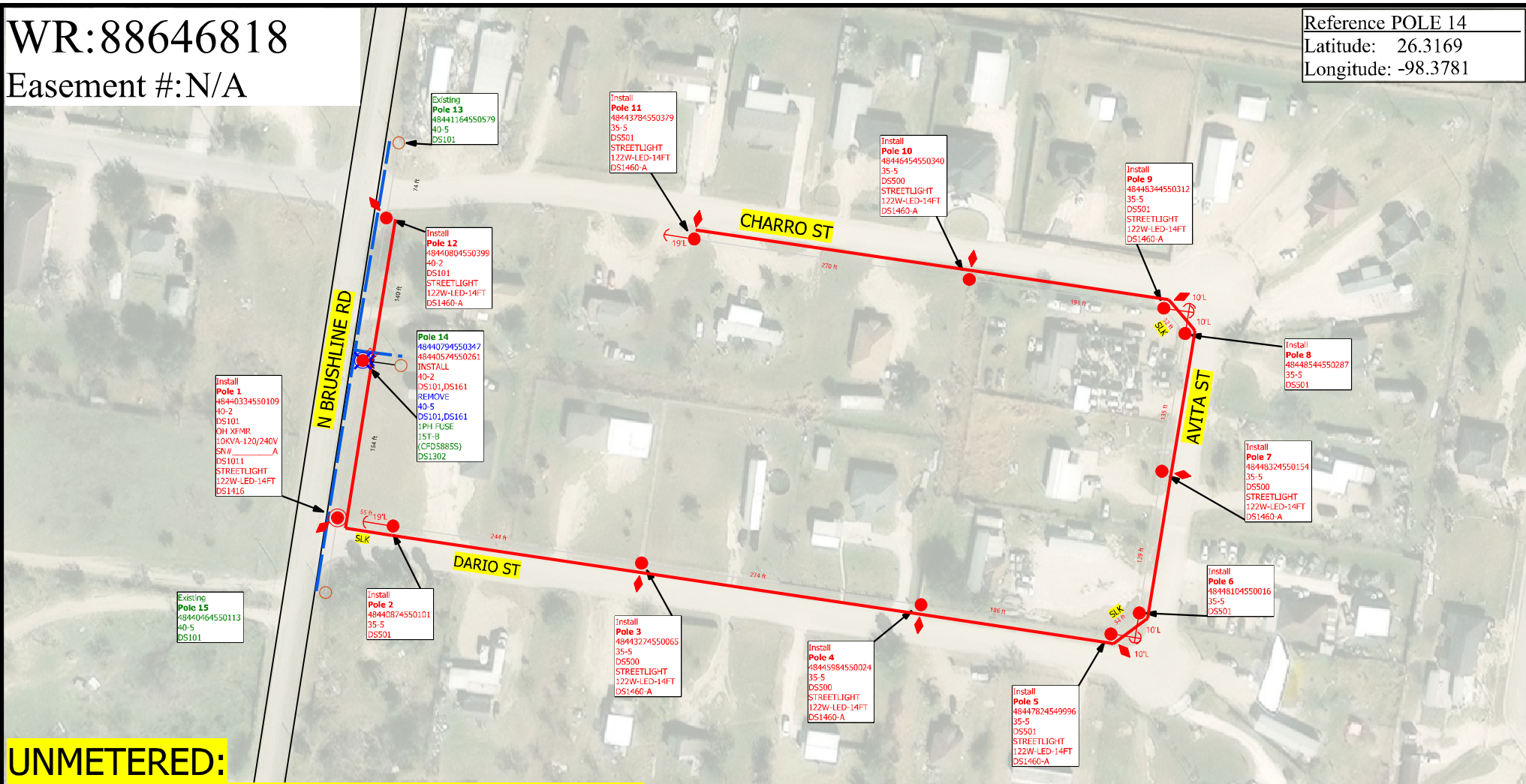
WR:88646818

Easement #:N/A

Reference POLE 14

Latitude: 26.3169

Longitude: -98.3781



**UNMETERED:
ADD 9 NEW 122W-LED-STREETLIGHTS
TO ESID# 1003278943571538**

Note to Crew:
-Update each pole ID tag with correct 14 digit GPS location number marked in **RED** which matches the XY coordinates obtained by GPS. **Blue** numbers refer to previous location ID
- 9 NEW STREETLIGHTS - MARTIN MARTINEZ 956-292-7025
- REPLACE 1-1PH POLE, INSTALL 2-1PH PRIMARY POLES, 10 SECONDARY POLES, 1 OH TRANSFORMER, AND 9 122W STREETLIGHTS

Job Description: 9 NEW STREETLIGHT FOR CARDINAL WAVES SUBDIVISION ON CHARRO ST		WR: 88646818
		WO: 364707
Customer: MARTIN MARTINEZ	Date Completed: 1/3/2025	Man Hours: 57.11
Location: 175 6110 CHARRO ST	County: HIDALGO	Project ID: S107CBN
District: 175 - Mission	City: MISSION	Crew HQ: 11712
Circuit / Station: 94SB3470/CITRUS CITY	N V: 12.47KV	Phases: B N
Drawn By: Cyven Hernandez	Tree Trimming: BY CUSTOMER	OWR: N/A
Office #: Cell:(956)673-7761	Accessible: YES	ESID: 1003278943571538
Issued for:	FINAL	Scale: 1"=100'
	Rev: N/A	Page 1 of 1

COLOR CODE LEGEND
RED -New Facilities
GREEN -Existing/Transfer Facilities
BLUE -Facilities to Be Removed

