

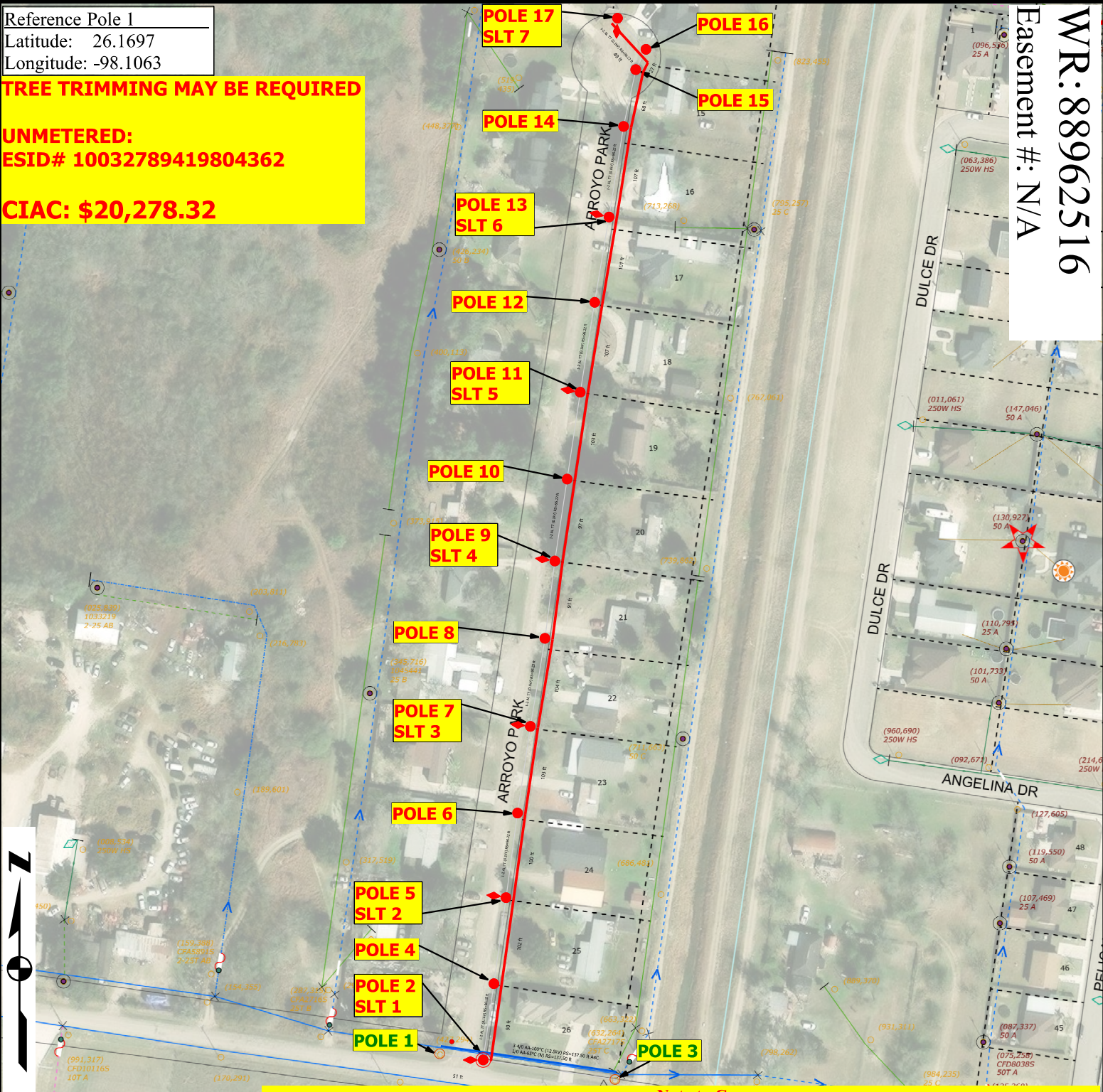
Reference Pole 1
 Latitude: 26.1697
 Longitude: -98.1063

TREE TRIMMING MAY BE REQUIRED

**UNMETERED:
 ESID# 10032789419804362**

CIAC: \$20,278.32

WR: 88962516
Easement #: N/A

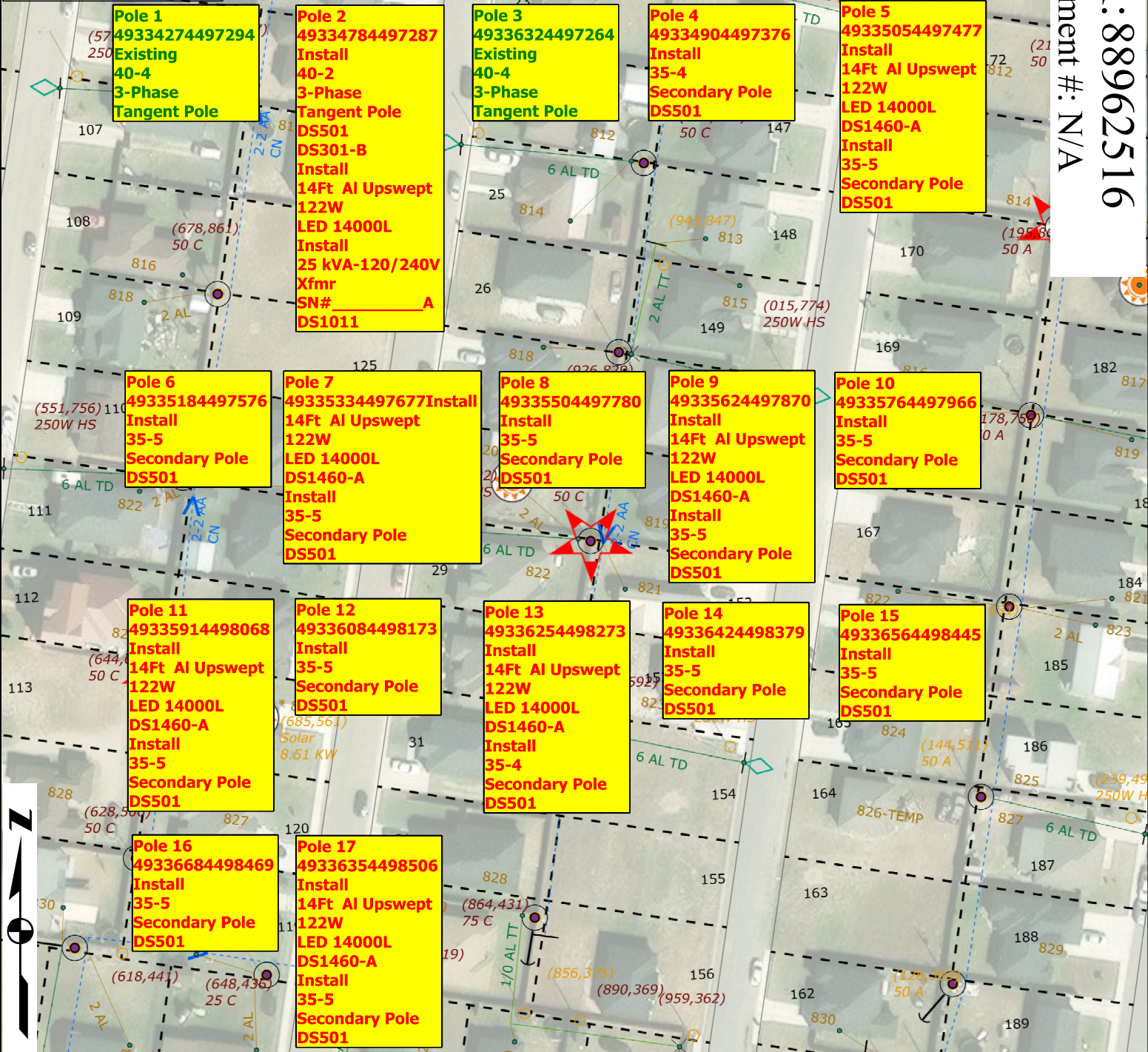


Note to Crew:
 -Update each pole ID tag with correct 14 digit GPS location number marked in **RED** which matches the XY coordinates obtained by GPS. **Blue** numbers refer to previous location ID
 - **CONTACT MARTIN MARTINEZ 956-292-7025 TECHNICIAN BRINA MEDIOLA 361-881-5332**
 - **INSTALL IN-LINE/W OH XFMR & 14 SEC POLES TO SERVE 7 NEW SLTS FOR COUNTY OF HIDALGO**

Job Description: CUSTOMER SERVICE-CI-NEW SERVICE		WR: 88962516	
		WO: DCP0365232	
Customer: MARTIN MARTINEZ		Date Completed: 01/21/2025	
Location: 169 800 ARROYO PARK		County: HIDALGO	
District: 169 - Pharr		City: ALAMO	
Circuit / Station: 94SB890/EL GATO		N V: 12.47KV	
Drawn By: Carlos Mckinnon Vila		Tree Trimming: YES	
Office #: 956-283-2413		Accessible: YES	
Issued for:		Scale: 1:160	
FINAL		Page 1 of 2	
		Rev. N/A	



Reference Pole 1
 Latitude: 26.1697
 Longitude: -98.1063



Color Code Legend:
 RED -New Facilities
 GREEN -Existing/Transfer Facilities
 BLUE -Facilities to Be Removed

Note to Crew:
 -Update each pole ID tag with correct 14 digit GPS location number marked in RED which matches the XY coordinates obtained by GPS. Blue numbers refer to previous location ID
 -CONTACT MARTIN MARTINEZ 956-292-7025 TECHNICIAN BRINA MEDIOLA 361-881-5332
 -INSTALL IN-LINE/W OH XFMR & 14 SEC POLES TO SERVE 7 NEW SLTS FOR COUNTY OF HIDALGO

Job Description: CUSTOMER SERVICE-CI-NEW SERVICE		WR: 88962516	
		WO: DCP0365232	
Customer: MARTIN MARTINEZ		Date Completed: 01/21/2025	
Location: 169 800 ARROYO PARK		County: HIDALGO	
District: 169 - Pharr		City: ALAMO	
Circuit / Station: 94SB890/EL GATO		N V: 12.47KV	
Drawn By: Carlos Mckinnon Vila		Tree Trimming: YES	
Office #: 956-283-2413		Accessible: YES	
Issued for:		Scale: 1:90	
FINAL		Page 2 of 2	
		Rev. N/A	

