

PART 7. ACCEPTANCE AND APPROVAL

This Work Authorization is hereby accepted, approved by Hidalgo County Commissioners' Court, and hereby executed and effective as of the date indicated below.

EXECUTED as of the day and year first written above.

APPROVED BY COMMISSIONERS' COURT ON SEPTEMBER 30, 2025.

Agenda Item No. 100913

Executive Office: _____

THE ENGINEER:
GDJ Engineering, LLC

THE OWNER:
HIDALGO COUNTY

By: _____
Print Name

By: Richard F. Cortez, County Judge

ATTEST:

By: Arturo Guajardo Jr., County Clerk

ATTACHMENTS:

Attachment A "Scope of Services By Owner"
Attachment B "Scope of Services By Engineer"
Attachment C "Project Schedule"
Attachment D "Fee Estimate"
Project Location Map
Project Subcontracting Notice

September 19, 2025

Hon. Ellie Torres
Commissioner, Hidalgo County Pct. #4
1051 N. Doolittle Road
Edinburg, Texas 78542

**RE: *Russell Road (Mile 17 ½) Project Proposal
From Rooth Road to Mon Mack Road
Work Authorization #3***

Dear Commissioner Torres,

As discussed, attached for your review and approval is our proposal to provide Work Authorization #3 design services for the Russell Road (Mile 17 ½) project.

This Work Authorization proposal is in the amount of **\$1,261,352.82**.

Attached you will find the following documents in support of the proposal:

1. Attachment A "Scope of Services By Owner"
2. Attachment B "Scope of Services By Engineer"
3. Attachment C "Project Schedule"
4. Attachment D "Fee Estimate"
5. Project Location Map
6. Project Subcontracting Notice

If this proposal is acceptable to you, I can assist in the preparation of the contract and work authorization documents for submittal to Commissioner's Court as you see fit. Thank you for this opportunity to assist Hidalgo County Precinct #4 in their transportation needs and should you have any questions regarding this submittal, do not hesitate to call me at (956) 603-2025.

Sincerely,



Robert Macheska, P.E., CFM
Executive VP/COO
GDJ Engineering, LLC

ATTACHMENT “A”
SCOPE OF SERVICES TO BE PROVIDED BY THE OWNER

The following provides an outline of the services to be provided by the **Owner** in the development of the PS&E for the necessary improvements for the Russell Road (from Rooth Rd to Mon Mack Rd) project, located within Hidalgo County, hereinafter denoted as the **Project**.

GENERAL:

The **Owner** will provide to the **Engineer** the following:

- 1) Provide the authorization to proceed with services through coordination with the **Engineer**.
- 2) Payment for work performed by the **Engineer** and accepted by the **Owner** in accordance with the Agreement.
- 3) Assistance to the **Engineer**, as necessary, to obtain the required data and information from other local, regional, State and Federal agencies the **Engineer** cannot easily obtain.
- 4) Provide any available relevant data the **Owner** may have on file concerning the **Project** including existing engineering documents or survey data.
- 5) Provide timely review and decisions in response to the **Engineer’s** request for information and/or required submittals and deliverables, in order for the **Engineer** to maintain the agreed upon work schedule prepared in accordance with Exhibit “C” attached to this Work Authorization.
- 6) Attend and participate in progress meetings as required and as coordinated and conducted by **Engineer**.

ATTACHMENT "B"
SCOPE OF SERVICES TO BE PROVIDED BY THE ENGINEER

PROJECT DESCRIPTION

The services designated herein as "Services provided by the ENGINEER" shall include the performance of all engineering services for the following described facility:

COUNTY/CITY: Hidalgo County

CONTROL: _____

PROJECT/DESCRIPTION: PS&E, Geotech, SUE & Management

LENGTH: 2.0 Miles

HIGHWAY: Russell Road (Mile 17 ½)

LIMITS: From Rooth Road to Mon Mack Road

PROJECT CLASSIFICATION

(Place an "X" in only one Project Classification)

- Surface Treatment
- Overlay
- Rehabilitation Existing Road (Scarify & Reshape)
- Convert Non-Freeway to Freeway
- Widen Freeway
- Widen Non-Freeway
- New Location Toll Freeway
- New Location Non-Freeway
- Interchange (New or Reconstruct)
- Bridge Widening or Rehabilitation
- Bridge Replacement
- Upgrade to Standards - Freeway
- Upgrade to Standards - Non-Freeway
- Miscellaneous Studies (Use Function Code 110 for All Tasks)

ENGINEER shall mean GDJ Engineering.

COUNTY shall mean Hidalgo County.

LPA shall mean Hidalgo County.

ATTACHMENT “B”
SCOPE OF SERVICES TO BE PROVIDED BY THE ENGINEER

ROUTE AND DESIGN STUDIES
(Function Code 110)

ROUTE AND DESIGN STUDIES:

The ENGINEER will perform any of the following tasks needed for the route and design studies:

1. Geotechnical Investigations, Engineering & Report
 - a. The ENGINEER shall provide geotechnical explorations and laboratory testing as needed for the project. All exploration soil borings shall be drilled in general accordance with ASTM D420 procedures, the samples will be collected in general conformance with ASTM D1586 procedures, and laboratory testing procedures will be performed in general accordance with Texas Department of Transportation TEX methods (or ASTM methods as required).
 - b. The ENGINEER shall provide geotechnical engineering and analysis of the explorations and laboratory testing.
 - c. The ENGINEER shall provide a signed/sealed geotechnical report of all findings including relevant recommendations for pavement design utilizing Flexible Pavement Design System FPS 21 published by the Texas Department of Transportation. The ENGINEER will specifically recommend pavement sections and materials needed for the pavement design. (lime percentage, salvage, thicknesses, etc...)
2. Traffic Analysis and Projections
 - a. If the project is Off-System, the ENGINEER will provide all traffic analysis and projection data for the project as previously provided by TxDOT’s Transportation Planning and Programming Division. The analysis will follow the STATE’s SOP and the data will be approved by the STATE.

FIELD SURVEYING AND PHOTOGRAMMETRY
(Function Code 150)

SUBSURFACE UTILITY ENGINEERING (SUE):

The SURVEYOR will perform SUE for the project which will include:

1. Quality Level C - Existing Records: Utilities are plotted from review of available existing records that will be generated by the Engineer on the schematic and provided to the surveyor for his further creation of a Utility Map which will be turned in as a deliverable as part of this work order.
2. Quality Level B - Surface Visible Feature Survey: The Surveyor shall gather the field tied Utility Information and compare it to the existing records (if any) as provided by the Engineer and correlate with surveyed surface-visible features. The surveyor shall create a Utility Layout Map or plan layout 2D, showing the limits of the proposed project and limits of the work area required for this work authorization; including highway stations, limits within existing or proposed right of way. Correlate utility owner records with designating data and resolve discrepancies using professional judgment. A color-coded composite utility facility plan with utility owner names, quality levels, line sizes and subsurface utility locate (test hole) locations. The Layout Map will include all utilities that have been field tied – 2D Horizontal Utilities. This Layout will be provided to the Engineer and a meeting held with Engineer to identify which utilities will need to be tied down vertically. A note must be placed on the designate deliverable only that states "lines sizes are from best available records". All above ground appurtenance locations must be included in the deliverable to the Engineer. This information will be provided in the latest version of Micro Station

ATTACHMENT "B"

SCOPE OF SERVICES TO BE PROVIDED BY THE ENGINEER

or Geopak used by the State. The electronic file will be delivered on C.D. or DVD. A hard copy is required and must be signed, sealed, and dated by the Surveyor. Note: Determine and inform the Engineer of the approximate utility depths at critical locations. This depth indication is understood by the Engineer to be approximate only and is not intended to be used for preparing the construction plans.

3. Quality Level A (Subsurface Utility Locate (Test Hole)) **THE SURVEYOR SHALL COORDINATE WITH THE ENGINEER ON THE NUMBER OF HOLES.** Locate shall mean to obtain precise horizontal and vertical position, material type, condition, size and other data that may be obtainable about the utility facility and its surrounding environment through exposure by non-destructive excavation techniques that ensures the integrity of the utility facility. Subsurface Utility Locate (Test Hole) Services (Quality Level A) are inclusive of Quality Levels B and C. The Surveyor shall:
 - a. Review the requested test hole locations that have been identified by the Engineer and Coordinate with utility owner inspectors as may be required by law or utility owner policy.
 - b. Measure and record the following data on an appropriately formatted test hole data sheet that has been sealed and dated by the Engineer:
 - Elevation of top and/or bottom of utility tied to the datum of the furnished plan.
 - Identify a minimum of two benchmarks utilized. Elevations shall be within an accuracy of 15mm (.591 inches) of utilized benchmarks.
 - Elevation of existing grade over utility at test hole location.
 - Horizontal location referenced to project coordinate datum.
 - Outside diameter of pipe or width of duct banks and configuration of non-encased multi-conduit systems.
 - Utility facility material(s).
 - Utility facility condition.
 - Coating/Wrapping information and condition.
 - Unusual circumstances or field conditions.
 - c. Excavate test holes in such a manner as to prevent any damage to wrappings, coatings, cathodic protection or other protective coverings and features. Water excavation can only be utilized with written approval from the appropriate State District Office.
 - d. Backfill all excavations with appropriate material, compact backfill by mechanical means, and restore pavement and surface material. The Engineer shall be responsible for the integrity of the backfill and surface restoration for a period of three years. Install a marker ribbon throughout the backfill.
 - e. Provide complete restoration of work site and landscape to equal or better condition than before excavation.
 - f. Plot utility location position information on the Utility Layout sheet and identify the vertical elevation and sealed by the responsible Surveyor. This information will be provided in the latest version of Micro Station or Geopak format used by the State. The electronic file will be delivered via file share links.

ADDITIONAL RESPONSIBILITIES

A. TRAFFIC CONTROL:

The SURVEYOR shall control traffic in and near surveying operations adequately to comply with provisions of the latest edition of the TxDOT Manual on Uniform Traffic Control Devices – Part VI and the latest edition of the Occupational Safety Manual both of which can be found on the TxDOT internet site.

In the event field crew personnel must divert traffic or close traveled lanes, a Traffic Control Plan based upon principles outlined in the latest edition of the TxDOT Manual on Uniform Traffic

ATTACHMENT “B”
SCOPE OF SERVICES TO BE PROVIDED BY THE ENGINEER

Control Devices – Part VI shall be prepared by the SURVEYOR and approved by the ENGINEER prior to commencement of field work. A copy of the approved plan shall be in the possession of field crew personnel on the job site at all times and shall be made available to the ENGINEER for inspection upon request.

B. INVOICING:

Payment requests shall include a SURVEYOR’s invoice. With each payment request, the SURVEYOR shall submit a project status report which will, as a minimum, include the percentage of total work complete as of the date of the payment request and a description of current work activity. The percentage of total work complete shall not be based simply on the percentage of funds expended, but shall be based on the best judgment of the SURVEYOR as to the percentage of actual work complete.

C. EASEMENTS, LETTERS OF PERMISSION, ETC.

The SURVEYOR shall be responsible for delineating easements. The SURVEYOR will be responsible for securing the necessary legal instruments and obtaining all Right-of-Entries (ROEs).

D. MEETINGS:

The ENGINEER shall setup the necessary meetings with the SURVEYOR in order to assure all field information is provided on-time and products are delivered in accordance with TxDOT’s/LPA’s specifications. SURVEYOR must attend all meetings involving data provided if requested by ENGINEER.

E. PROJECT MANAGER/SURVEYOR COMMUNICATION:

The SURVEYOR shall designate one Texas Registered Professional Land Surveyor (RPLS) to be responsible throughout the project for project surveying coordination and all communications, including billing, with the ENGINEER.

F. OFFICE LOCATION:

The SURVEYOR will perform the services to be provided under this agreement out of a local office and have a crew available to perform requested tasks within 24 hours of request. The coordinating SURVEYOR’s Project Manager (RPLS) shall be accessible at all times and working from the local office.

ROADWAY DESIGN CONTROLS

(Function Code 160)

ROADWAY DESIGN:

The ENGINEER will perform roadway design services for the needed construction repairs along the project limits. The services will include:

1. Geometric Design
 - a. Horizontal and Vertical Alignment
 - b. All geometric design shall be in conformance with the State's Design Division, Operations and Procedures Manual, except where variances are permitted in writing by the LPA.
 - c. Handling of traffic during construction shall be a consideration in the development of preliminary designs.
2. Exhibits for Airway/Highway clearance permits (if within airport vicinity)

ATTACHMENT “B”
SCOPE OF SERVICES TO BE PROVIDED BY THE ENGINEER

3. Grading Design
 - a. Refine the horizontal alignment including the following items
 - i. Typical Sections
 - ii. Design Cross Sections
 - iii. Determine Cut and Fill Quantities
 - iv. Slope Stability Analysis, if applicable
 - v. Embankment Foundation Stability Analysis, if applicable
 - vi. Embankment Settlement Analysis, if applicable

4. Pavement Design
 - a. Prior to initiating detailed plan preparations for a project, a preliminary investigation shall be made to determine the approximate section and pavement type to be used for the pavement structure. The Flexible Pavement Design Manual for flexible pavement, “Appendix F” of the Design Division, Operations and Procedures Manual, and the current AASHTO Guide for the Design of Pavement Structures, may be used for this purpose.
 - b. The typical section shall also reflect proposed geometric including pavement cross slopes, lane and shoulder widths, and slope rates whenever this data have not been previously shown on a schematic submission.
 - c. Embankment and Subgrade
 - i. Provide Soil Core Holes (location and number to be agreed upon with Owner)
 1. Along center line of each roadway
 - ii. Identify , interpret and summarize the geological features that affect engineering design (PI, sulfate content & % of lime)
 - d. Traffic Data for Pavement Design
 - e. Basic Design Criteria
 - f. Life Cycle Cost Analysis(es)
 - g. Cost Data
 - h. Pavement Material Properties
 - i. Rehabilitation Investigations
 - i. Soil Core Holes to determine type and depth of existing material, pavement, etc. The ENGINEER, in coordination with LPA, will determine whether to salvage the existing ACP and Flexbase.

DRAINAGE
(Function Code 161)

DRAINAGE DESIGN:

The ENGINEER will perform drainage design services for the needed construction repairs along the project limits. All hydraulic design shall be in accordance with TxDOT’s Hydraulic Manual, except where variances are permitted in writing by the LPA. The services will include:

1. Hydrologic & Hydraulic Studies, Discharges
 - a. Hydrologic Map showing drainage areas, contours and drainage Q’s.
 - b. Drainage area maps showing existing conditions and proposed improvements.
 - c. Hydrologic data/discharge determination

2. Hydraulic Drainage Study & Documentation
 - a. Hydraulic Computations, if applicable
 - i. Storm water detention available within the ROW (linear ft. along side drain ditch).

ATTACHMENT “B”
SCOPE OF SERVICES TO BE PROVIDED BY THE ENGINEER

- ii. Storm water detention available outside the ROW (as per local Drainage District)
 - iii. Culverts
 - iv. Bridge Waterways
 - v. Channels
 - vi. Storm sewers/inlets
 - vii. Pump Stations
 - viii. Storm Water Management Facilities
 - ix. Irrigation Canals/Siphons
 - b. Hydraulic Reports
 - c. Federal Emergency Management Agency (FEMA) floodway requirements
 - d. Determine impact of proposed drainage plan on Drainage District or Irrigation District receiving streams
3. Layout, Structural Design and Detailing of Drainage Features
- a. Culverts
 - i. New Culverts
 - ii. Culvert widening and/or lengthening
 - iii. Culvert replacements
 - b. Storm Sewers
 - i. New storm sewers
 - ii. Modify existing storm sewers
 - iii. Inlets
 - iv. Manholes
 - v. Trunk lines
 - c. Pump Stations
 - d. Subsurface drainage at retaining walls
 - e. Outfall channel(s) within the ROW
 - f. Outfall channel(s) outside the ROW
 - g. Detention Pond(s) within the ROW
 - h. Detention Pond(s) outside the ROW
 - i. Summary of Quantities
4. Storm Water Pollution Prevention Plan (SW3P)

SIGNING, MARKINGS AND SIGNALIZATION

(Function Code 162)

PAVEMENT MARKINGS:

The ENGINEER will provide pavement marking, signing and/or signalization layouts for the needed construction repairs along the project limits. The services will include:

- 1. Signing and Markings Layout
 - a. Roadway layout
 - b. Center line with station numbering
 - c. ROW lines
 - d. Culverts and other structures that present a hazard to traffic
 - e. Location of utilities, if not shown on plan and profile
 - f. Existing signs to remain, to be removed, to be relocated
 - g. Proposed signs (illustrated and numbered)

ATTACHMENT “B”
SCOPE OF SERVICES TO BE PROVIDED BY THE ENGINEER

- h. Existing overhead sign bridges to remain, to be revised, removed or relocated
 - i. Proposed overhead sign bridges indicating location by plan layout (electrical details need not be shown on this layout)
 - j. Proposed markings (illustrated and quantified) which include pavement markings, object markings and delineation
 - k. Quantities of existing pavement markings to be removed
 - l. Proposed delineators and object markers
2. For projects involving freeway to freeway or other types of directional interchanges, projects including left-hand ramps or connections, the following information must be provided:
 - a. The location of interchanges, main lanes, grade separations, frontage roads and ramps
 - b. Complete explanation of the sequence and methods of stage construction, where applicable, which would include the initial and ultimate proposed treatment of crossovers and ramps
 - c. The number of lanes in each section of proposed highway and the location of changes in number of lanes
 - d. The projected traffic volumes as provided by the STATE (20 year traffic projection, unless otherwise determined by the District Engineer)
 - e. Tentative ROW limits
 - f. Direction of traffic flow on all roadways
 - g. Main lane, ramp, frontage road and necessary cross road profiles at proposed interchanges or grade separations
3. Summary of Small Sign Tabulation
4. Summary of Large Sign Tabulation including all Guide Signs (if applicable)
5. Sign Detail Sheets
 - a. All signs except for route markers
 - b. Design details for large guide signs
 - c. Dimensions of letters, shields, borders, corner radii, etc.
 - d. Designation of shields attached to guide signs
 - e. Designation of arrow used on exit direction signs
6. Traffic Signals (if applicable)
 - a. Development of Justification (Warrant) Data
 - i. Location Map
 - ii. Photographs as appropriate
 - iii. Accident data as appropriate
 - iv. Vehicle volumes (existing, estimated, projected, and pedestrian)
 - v. Traffic Survey – Count Analysis
 - vi. Recommendation based on the collected data
 - b. Layout
 - i. Title Sheet (when applicable)
 1. Describe the location
 2. Type of installation
 3. Area map with project limits for each location
 4. Index of sheets
 5. Space for official signatures

ATTACHMENT "B"
SCOPE OF SERVICES TO BE PROVIDED BY THE ENGINEER

- ii. Estimate and quantity sheet (when applicable)
 - 1. List of all bid items
 - 2. Bid item quantities
 - 3. Specification item number
 - 4. Paid item description and unit of measure
 - iii. Basis of estimate sheet
 - iv. General notes and specification data sheet
 - v. Condition Diagram
 - 1. Highway and intersection design features
 - 2. Roadside development
 - 3. Traffic control including illumination
 - vi. Plan Sheets(s)
 - 1. Existing traffic control that will remain (signs and markings)
 - 2. Existing utilities
 - 3. Proposed highway improvements
 - 4. Proposed installation
 - 5. Proposed additional traffic controls
 - 6. When applicable, proposed conduit for Railroad interconnect with standard details for runs under tracks
 - 7. Proposed illumination attached to signal poles
 - vii. Notes for plan layout
 - viii. Elevation sheet(s) (span wire design)
 - ix. Phase sequence diagram(s)
 - 1. Signal locations
 - 2. Signal indications
 - 3. Phase Diagram
 - 4. Signal sequence table
 - 5. Flashing operation
 - 6. Preemption operation
 - 7. Interval timing, cycle length and offset
 - x. Construction Detail Sheets
 - 1. Poles, Detectors, Pull box and conduit layout & Controller Foundation
 - xi. Marking Details (when applicable)
 - xii. Barricade and warning sign standard sheet and any special details for work zone traffic control for special conditions
 - xiii. Aerial or underground interconnect details (when applicable)
- c. General Requirements
- i. Contact the local utility company
 - 1. Confirm Power Source
 - 2. Discuss route of aerial or underground interconnect cable
 - 3. Adjustment of overhead utility lines
 - ii. Prepare governing specifications, special provisions list and estimate
- d. Summary of Quantities

ATTACHMENT “B”
SCOPE OF SERVICES TO BE PROVIDED BY THE ENGINEER

MISCELLANEOUS ROADWAY
(Function Code 163)

TRAFFIC CONTROL PLAN, DETOURS AND SEQUENCE OF CONSTRUCTION:

The ENGINEER will provide a Traffic Control Plan (TCP) for the needed construction repairs along the project limits. TCP’s are required for all projects; therefore a detailed TCP shall be developed when traffic handling during construction involves complications for which a feasible solution is not covered by the Texas MUTCD or the current Barricade and Construction (BC) standards. The following items are required on all TCP Layouts:

1. The Sequence of Construction and method of handling traffic during each phase
2. Roadway layout
3. Center line with station numbering
4. The existing and proposed traffic control devices that will be used to handle traffic during each construction sequence. Include signals, regulatory signs, warning signs, construction warning signs, guide signs, route markers, construction pavement markings, channelizing devices, portable changeable message signs, flashing arrow boards, barricades, barriers, etc...
5. The proposed traffic control devices (stop signs, signals, flag person, etc.) at grade intersections during each construction sequence.
6. Where detours are provided, typical cross sections shall be shown.
7. Road construction work hours shall be developed after an investigation of the traffic volumes has been performed.

COMPUTE AND TABULATE QUANTITIES:

The ENGINEER will provide a summary of quantities sheet in the plans identifying all estimated project quantities.

PROJECT ESTIMATE:

The ENGINEER will provide a project estimate summarizing all estimated construction costs.

SPECIFICATIONS AND GENERAL NOTES:

The ENGINEER will provide all relevant project specification and general notes to the project construction activities.

COMPENSABLE UTILITIES

Utility Accommodation is an integral factor in road construction and design. Coordination of utility adjustments is a necessary function within planning, design, acquisition and construction and requires the administration of property rights issues, utility policy, and reimbursement of eligible utility adjustments. It includes the following tasks:

- a. Preliminary Design Consultations
 - i. Conduct Field Investigation and review Certificate of Convenience and Necessity boundaries to identify utility providers within the project area. Communications through letter, phone calls and email to establish a contact list. Coordinate data gathering by surveyors and design team. Introduce project to utility providers.
- b. Field Observations and Verifications
 - i. Provide maps to Utility providers to “redline” and identify conflicts. Coordinate exposures and data collection by surveyor. Provide and confirm utility data on project maps. Order Utility Location Service.

ATTACHMENT “B”

SCOPE OF SERVICES TO BE PROVIDED BY THE ENGINEER

- c. Exchange of Information with Utility Providers
 - i. Provide project schedule
 - ii. Request schedules for utility adjustments
 - iii. Identify who is responsible for utility process

- d. Confirmation of Property Interests
 - i. Request Documents
 - ii. Coordination of data on maps and citation of property interest documents
 - iii. Confirm utilities are within easements

- e. Coordination of Agreements
 - i. Identify utilities that are compensable
 - ii. Determine parties and agreements necessary to complete compensable process
 - iii. Coordinate execution and processing of Standard Utility Agreements

- f. Utility Meetings Throughout Project Development
 - i. Set up and coordinate utility meetings during planning, design, acquisition and construction phases
 - ii. Attend and participate in meetings by other parties

PROJECT MANAGEMENT

(Function Code 164)

MEETINGS, COORDINATION & SUPPORT FOR PROJECT MANAGEMENT:

The ENGINEER shall meet and coordinate with all relevant entities (i.e. County, Regional Mobility Authority, Texas Department of Transportation, Rio Grande Valley Metropolitan Planning Organization, etc...) and all other affected parties. The Engineer shall serve as representative for the LPA in coordination items. The Engineer shall coordinate with the LPA’s staff on all Project related items.

CONSTRUCTION PHASE SERVICES

(Function Code 320)

The ENGINEER will provide engineering, geotechnical testing and support services for and during the construction of the Project or portions of the Project approved by the LPA. Specific (basic and special) services for CONSTRUCTION MANAGEMENT AND SUPPORT by the ENGINEER will include the following:

CONSTRUCTION BIDDING & COORDINATION:

1. The ENGINEER will furnish the LPA the necessary copies of approved plans, specifications, notices to bidders, and proposals as prepared under PS&E.

2. The ENGINEER will assist the LPA on the tabulation of bids, recommendations to the Owner as to the proper action on all bid proposals received, and the preparation of formal contract documents for the award of each construction contract.

3. The ENGINEER will coordinate with the LPA and CEI to monitor construction activities on a monthly basis as it relates to proposed design plans/specifications and construction schedule.

ATTACHMENT "B"
SCOPE OF SERVICES TO BE PROVIDED BY THE ENGINEER

ADDITIONAL RESONSIBILITIES

EASEMENTS, LETTERS OF PERMISSION, ETC.:

The ENGINEER shall be responsible for delineating easements. The ENGINEER will be responsible for securing the necessary legal instruments.

MEETINGS:

Meetings will be held with the FHWA, State Officials, local governments, property owners, utility owners, railroad companies, other consulting firms, etc., as needed or required by the LPA. The ENGINEER shall coordinate through the LPA for the development of this project with any local entity having jurisdiction or interest in the project (i.e., city, county, etc).

SPECIFICATIONS, SPECIAL PROVISIONS, SPECIAL SPECIFICATIONS:

Use the State's standard specifications or previously approved special provisions and/or special specifications. If a special provision and/or special specification is developed for this project, it shall be in the State's format and incorporate references to approved State test procedures.

PROJECT MANAGER/ENGINEER COMMUNICATION:

The ENGINEER shall designate one Texas Registered Professional Engineer to be responsible throughout the project for project management and all communications, including billing, with the LPA's Director. Any replacements to the ENGINEER's designated Project Manager/Engineer must be approved by the LPA.

Engineering documents produced for the department's engineering projects shall be signed, sealed and dated or CADD sealed in accordance with Administrative Order No. 5-89 and Administrative Circular No. 26-91.

DESIGN RESPONSIBILITIES:

The ENGINEER is responsible for design errors and/or omissions that become evident before, during or after construction of the project. The ENGINEER's responsibility for all questions arising from design errors and/or omissions will be determined by the LPA and all decisions shall be final and binding. This would include, but not necessarily be limited to:

1. All design errors and/or omissions resulting in additional design work to correct the errors and/or omissions.
2. Preparation of design documents and detail drawings necessary for a field change due to design errors and/or omissions.
3. Revision of original tracings to the extent required for a field change due to design errors and/or omissions.

The ENGINEER shall promptly make necessary revisions or corrections resulting from the ENGINEER's errors, omissions or negligent acts without additional compensation. Acceptance of the work by the LPA will not relieve the ENGINEER of the responsibility for subsequent correction of any such errors or omissions or for clarification of any ambiguities.

ATTACHMENT “B”
SCOPE OF SERVICES TO BE PROVIDED BY THE ENGINEER

DOCUMENT AND INFORMATION EXCHANGE:

Data, Plan Sheets, General Notes and/or Specifications provided to the LPA shall be furnished on 8GB USB flash drives. Each 8 GB flash drive shall have a file titled Table of Contents. The Table of Contents shall indicate the locations of files within the directory structure of the documentation.

General Notes and specifications shall be provided in the latest MS Office format. Plan sheets shall be provided in Microstation DGN or GEOPAK GPK format. PDF copies of plan sheets shall also be provided.

Two copies of the documentation shall be provided to the LPA.

If required, the ENGINEER shall provide to the LPA, a CD that contains all the plan sheets for the project. The graphics tape shall be compatible with the LPA’s computer system.

PROPOSAL TIME:

The time indicated in the proposal and the contract shall include time necessary for reviews, approval, etc.

OFFICE LOCATION:

The ENGINEER will perform all services to be provided under this agreement out of their office located at: 2805 Fountain Plaza Blvd., Suite B, Edinburg, Texas 78539

ATTACHMENT C

Client: Hidalgo County Pct. #4

PROJECT DEVELOPMENT SCHEDULE

Work Authorization #3

Russell Road
(From Rooth Rd to Mon Mack Rd)

TASK AND DESCRIPTION	ENTITY	2025			2026												2027												
		OCT	NOV	DEC	JAN	FEB	MAR	APR	MAY	JUN	JUL	AUG	SEP	OCT	NOV	DEC	JAN	FEB	MAR	APR	MAY	JUN	JUL	AUG	SEP	OCT	NOV	DEC	
WORK AUTHORIZATION #3 TASKS																													
PS&E, Geotech & Utility Coordination																													
Notice To Proceed	HC4																												
Geotechnical Drilling & Engineering	GDJ																												
SUE Work (Approx. 20 potholes)	GDJ																												
MPO Funding Coordination	GDJ																												
TxDOT AFA Coordination	GDJ																												
30% PS&E Package	GDJ																												
30% PS&E Package Review	TxDOT																												
60% PS&E Package	GDJ																												
60% PS&E Package Review	TxDOT																												
90% PS&E Package	GDJ																												
90% PS&E Package Review	TxDOT																												
95% PS&E Package	GDJ																												
95% PS&E Package Review	TxDOT																												
100% PS&E Package	GDJ																												
Final Plan Approval	TxDOT																												
Construction Letting & Management																													
Local Let Bid Package Development	GDJ																												
Bidding Prep & Advertisement for Bids	HC4																												
Receipt of Bids	HC4																												
Bid Analysis	GDJ																												
Award of Low Bidder w/TxDOT Concurrence	HC4																												
Begin Construction Operations	HC4																												

HIDALGO COUNTY TASK
 GDJ TASK
 TxDOT TASK



"Attachment D" Fee Estimate

**Hidalgo County Precinct #4: Russell Road (Mile 17 1/2) - Project Development & Design Fee Proposal (WA #3)
Rooth Rd. to Mon Mack Rd.**

<i>Project Development (PS&E, Geotech, Utility Coord & Management) Fee Proposal - Hidalgo County Pct. #4: Russell Road Project</i>		MANHOURS							Total Hours	Total Line Item Cost
		Principal/Senior Project Manager	Project Manager	Agency Coordination/ Utility Manager	Project/Design Engineer	EIT	Engineering Tech	Admin/Clerical		
TASK										
WA #3 - PS&E, Geotech, Utility Coord & Management										
1	PS&E Development	246	458	232	1306	1802	2266	288	6598	\$ 682,722.00
2	Traffic Design (Signals, Beacons, Signing, & Pvmt Markings)	SUBCONSULTANT TRAFFIC COST								\$ 245,000.00
3	Traffic Methodology Report	SUBCONSULTANT TRAFFIC COST								\$ 35,730.82
4	Geotechnical Testing & Pavement Design	SUBCONSULTANT GEOTECHNICAL COST								\$ 27,850.00
5	Subsurface Utility Engineering (20 potholes)	SUBCONSULTANT SUE COST								\$ 15,000.00
6	Permitted Utility Coordination	6	28	34	114	54	128	4	368	\$ 39,766.00
7	Compensable Utility Coordination	34	70	82	222	100	282	12	802	\$ 88,364.00
8	Local Let Bid Package Development Assistance	18	46	96	104			4	268	\$ 35,430.00
9	Lertting Assistance (Pre-Bid Meeting, RFI's, Pre-Con Meeting, etc...)	16	66	66	90				238	\$ 32,690.00
10	Construction Activities Coordination	16	32	36	52	420			556	\$ 58,800.00
Total (WA #2)		336	700	546	1888	2376	2676	308	8830	\$ 1,261,352.82
Total Labor Hours		336	700	546	1888	2376	2676	308	8830	
Contract Rate		\$ 185.00	\$ 160.00	\$ 120.00	\$ 125.00	\$ 95.00	\$ 82.00	\$ 55.00		
Total Labor Costs		\$ 62,160.00	\$ 112,000.00	\$ 65,520.00	\$ 236,000.00	\$ 225,720.00	\$ 219,432.00	\$ 16,940.00		\$ 1,261,352.82

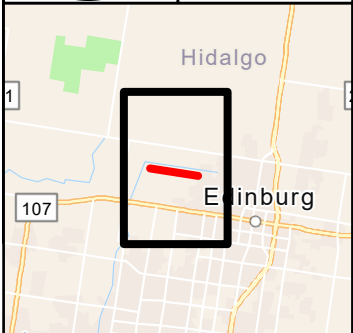
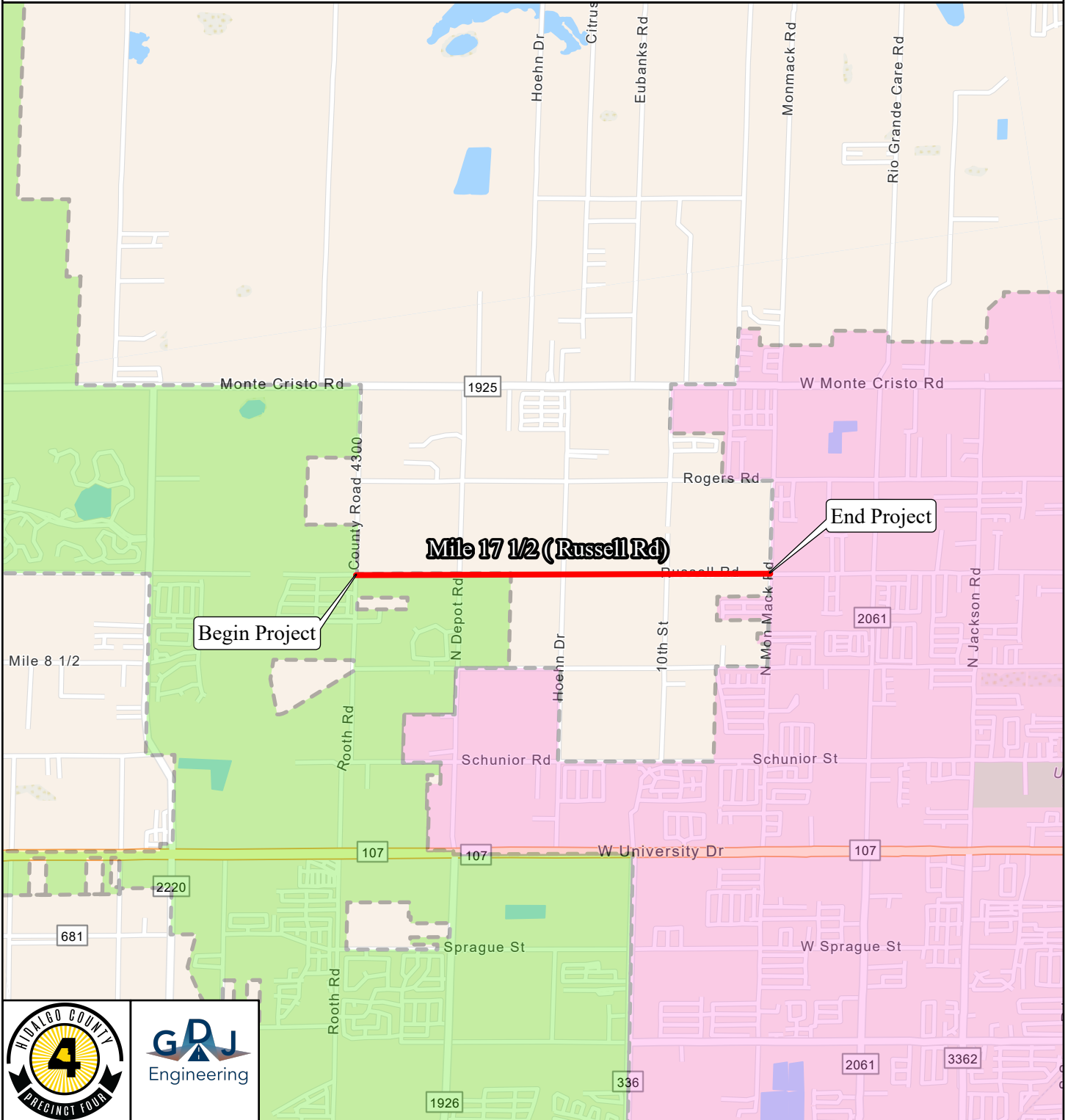
LINE ITEM EXPENSES

N/A \$ -

Total Expenses **\$ -**

GDJ Engineering Total Cost **\$ 1,261,352.82**

Location Map



Proposed Mile 17 1/2 (Russell Rd) Project
 Project Limits from Rooth Rd to Mon Mack Rd
 Approximate 2.0 Miles

Legend

- Project Alignment
- Edinburg City Limits
- McAllen City Limits

0 0.5 1
 Miles
 1in = 4000 Ft

September 19, 2025

Hon. Ellie Torres
Commissioner, Hidalgo County Pct. #4
Attn: Velinda Reyes – Chief Administrator for External Affairs
1051 N. Doolittle Road
Edinburg, Texas 78542

**RE: *Subcontracting Notice for the Russell Road (Mile 17 ½) Project
From Rooth Road to Mon Mack Rd
Work Authorization #3***

Dear Commissioner Torres,

As required, please accept this letter as notice that we will be using the following subcontractors on Work Authorization #3 of the Russell Road (Mile 17 ½) Project. The list of Subcontractors and tasks provided are as follows:

- 1. Traffic Design**
Mr. Jesse Salinas
TEDSI Infrastructure Group
1201 E. Interstate Hwy 2
Mission, Texas 78572
- 2. Geotechnical Testing and Pavement Design**
Mr. Alfonso A. Soto, P.E., D.GD, F.ASCE
Terracon Consultants, Inc.
1506 Mid Cities Dr.
Pharr, Texas 78577
- 3. Subsurface Utility Engineering (SUE)**
Mr. Kurt Schumacher, RPLS
Kane-Lindsey, LLC
2805 Fountain Plaza Blvd., Suite B
Edinburg, Texas 78539

Thank you and should you have any questions, do not hesitate to call me at (956) 603-2025.

Sincerely,



Robert Macheska, P.E., CFM
Executive VP/COO
GDJ Engineering, LLC